

CPTED Principles

Sacramento Regional Transit
District

What is CPTED?

- Crime Prevention Through Environmental Design
 - Appropriate Design
 - Effective Use
 - Reduces Crime in Public Areas
- 4 Principles

Natural Surveillance



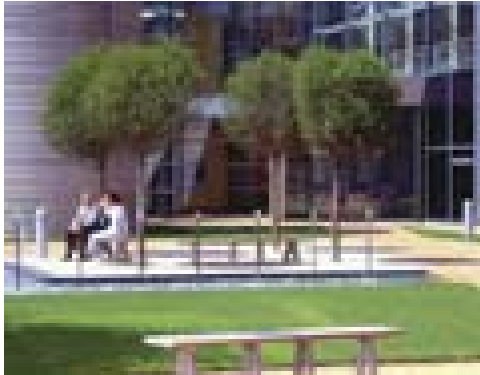
See and be seen.
Good Lighting, clear lines of sight
and windows on the subject

RT has lighting design standards to maximize visibility on platforms without causing light pollution in surrounding neighborhoods

Not a good example of
Decorative shrubbery –
No windows, no line of
sight



Natural Access Control



CPTED makes use of walkways, fences, lighting, signage and landscape to clearly guide people and vehicles to and from the proper entrances.

It is not about keeping “bad” people out. It is about creating places where people feel safe to walk and approach. By providing clear guidance, you give the customer confidence and security.

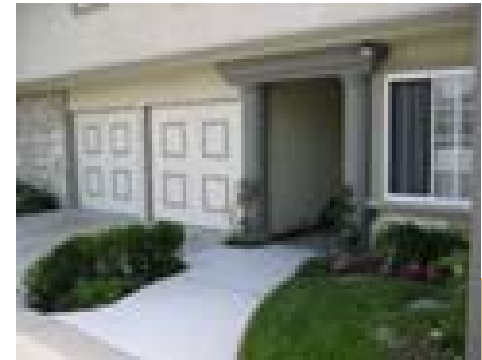


Territorial Reinforcement



Creating or extending a “sphere of influence” by using fencing, flower beds, pavement, and decorative treatments establishes ownership of the space. Criminal activity and vandalism occurs most often in places that are not clearly “owned” by someone.

Public areas are clearly distinguished from private ones. Potential trespassers perceive this control and are thereby discouraged.



Maintenance



The “Broken Window Theory” says that a run-down place will attract crime. The obverse also holds true: a well-maintained place will deter crime. The place where “ownership” is clearly established will be uncomfortable for criminals to inhabit.

Removal of graffiti is an important aspect of maintenance. Criminals feel safer where property is not adequately maintained.





Natural Surveillance

Visible from parking areas and public street traffic.



Natural Access Control



Access is controlled by paving, fencing, landscaping, etc.



Territorial Ownership



Structures, landscaping and other improvements let people know who owns the facility.





Maintenance

Maintenance adds to ownership, that someone is watching, also it reduces “hiding” places and allows light to penetrate.

