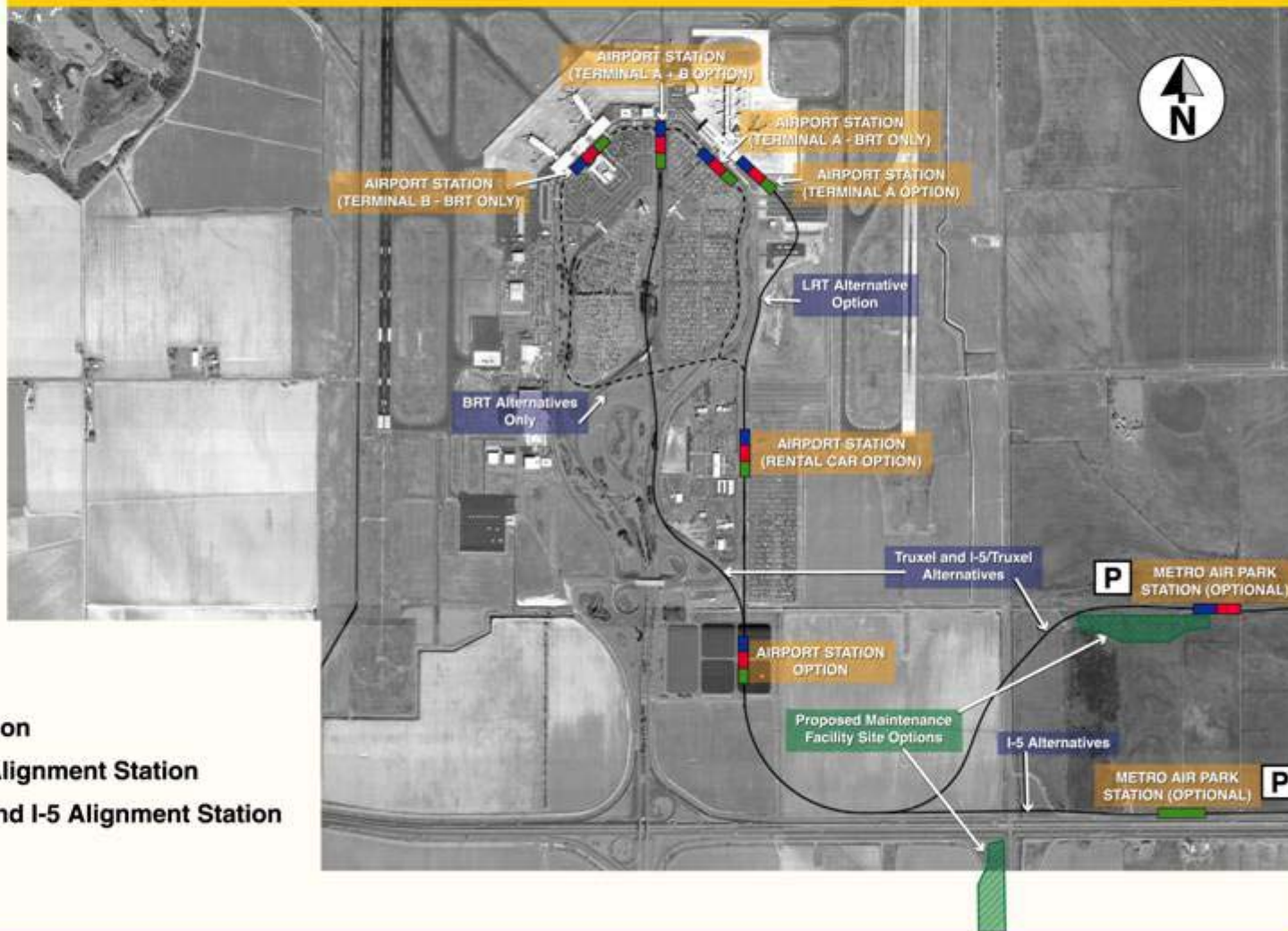




Station 4

AIRPORT AREA

Where are the LRT and BRT alignments and stations in the airport area?



SYMBOL KEY:

- P = Park & Ride
- = I-5 Alignment Station
- = I-5/Truxel and I-5 Alignment Station
- = Truxel, I-5/Truxel and I-5 Alignment Station

What are the alignment options in Segment 4?



Design Options:
 1 - Single Station at Terminal A/B (Primary)
 2 - Terminal A East Side
 A - Optional Station at Rental Car Facility

— Truxel Alignment and I-5/Truxel Alignment
 — I-5 Alignment

Downtown Natomas Airport

Transit Alternatives Analysis/
Draft Environmental Impact
Statement and Report

What are the land uses and environmental resources in the airport area?

LAND USE

- ~ Alternative
- ~ LRT Station
- Agricultural
- Care / Health
- Church / Welfare
- Industrial
- Miscellaneous
- No Data
- Office
- Public / Utilities
- Recreational
- Residential
- Retail / Commercial
- Vacant Agricultural
- Vacant Care / Health
- Vacant Industrial
- Vacant Office
- Vacant Recreational
- Vacant Residential
- Vacant Retail / Commercial

SENSITIVE LAND USE

- ~ Alternative
- ~ LRT Station
- Cemetery
- Child Care
- Community Center
- Fire Station
- Library
- Museum
- Police Station
- Hospital
- School
- Park
- Church Property
- Historic Structure
- Preservation Area

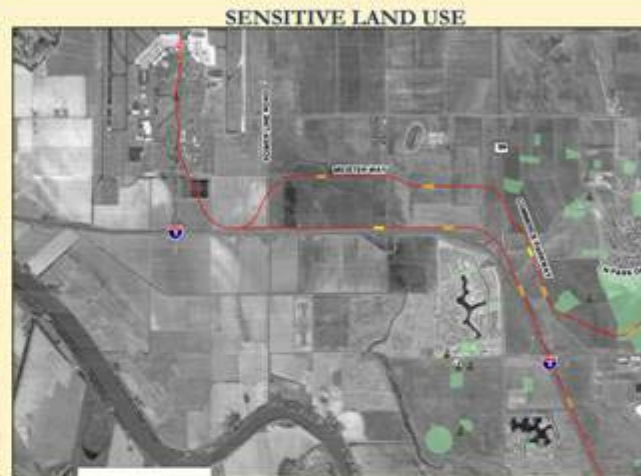
ENVIRONMENTAL JUSTICE

- ~ Alternative
- ~ LRT Station
- Population Below Poverty Level > 50%
- Minority Population > 50%
- Both Conditions

ENVIRONMENTAL FACTORS

- ~ Alternative
- ~ LRT Station
- Canal / Ditch / Drain
- Diced Field
- Grain Crop
- Great Valley Mixed Riparian Forest
- Great Valley Willow Scrub
- Mixed Woodland
- Ruderal / Annual Grassland
- Urban / Landscaped / Park
- 100 Year Flood Plain

NOTE: LAND USE DATA PROVIDED BY THE CITY AND COUNTY OF SACRAMENTO, APRIL 1997



ENVIRONMENTAL JUSTICE

ENVIRONMENTAL FACTORS

What are the significant environmental impacts from Highway 99 to the airport?

Resource / Alternative	Community Impact (project divides community)	Property Acquisition (maximum acquisitions)	Environmental Justice (disturbance to low income and minorities)	Environmental Justice (population of low income and minorities served)	Cultural Resources (historical and/or archeological sites)	Parklands (acres disturbed)	Visual (linear feet of aerial structures)	Biological Habitat (acres of Threatened and Endangered species habitat impacted)	Construction (high/medium/low impacts related to noise, disruption of traffic flow and access)
Alternative 3, Truxel LRT	No	0 to 1	No	32/11	0	0	1,500 to 3,500 (Low)	5	Low
Alternative 3A, Truxel LRT Starter Line	No	0	No	32/11	0	0	1,500 to 3,500 (Low)	5	Low
Alternative 4, Truxel BRT	No	0	No	32/11	0	0	9,500 (Low)	5	Low
Alternative 5, I-5/Truxel LRT	No	0 to 1	No	32/11	0	0	1,500 to 3,500 (Low)	5	Low
Alternative 6, I-5/Truxel BRT	No	0	No	32/11	0	0	9,500 (Med)	5	Low
Alternative 7, I-5 LRT	No	0 to 1	No	32/11	0	0	1,500 to 3,500 (Low)	5	Low
Alternative 8, I-5 BRT	No	0	No	32/11	0	0	9,000 (Low)	5	Low