

# Where are the LRT and BRT alignment options in the Airport area?

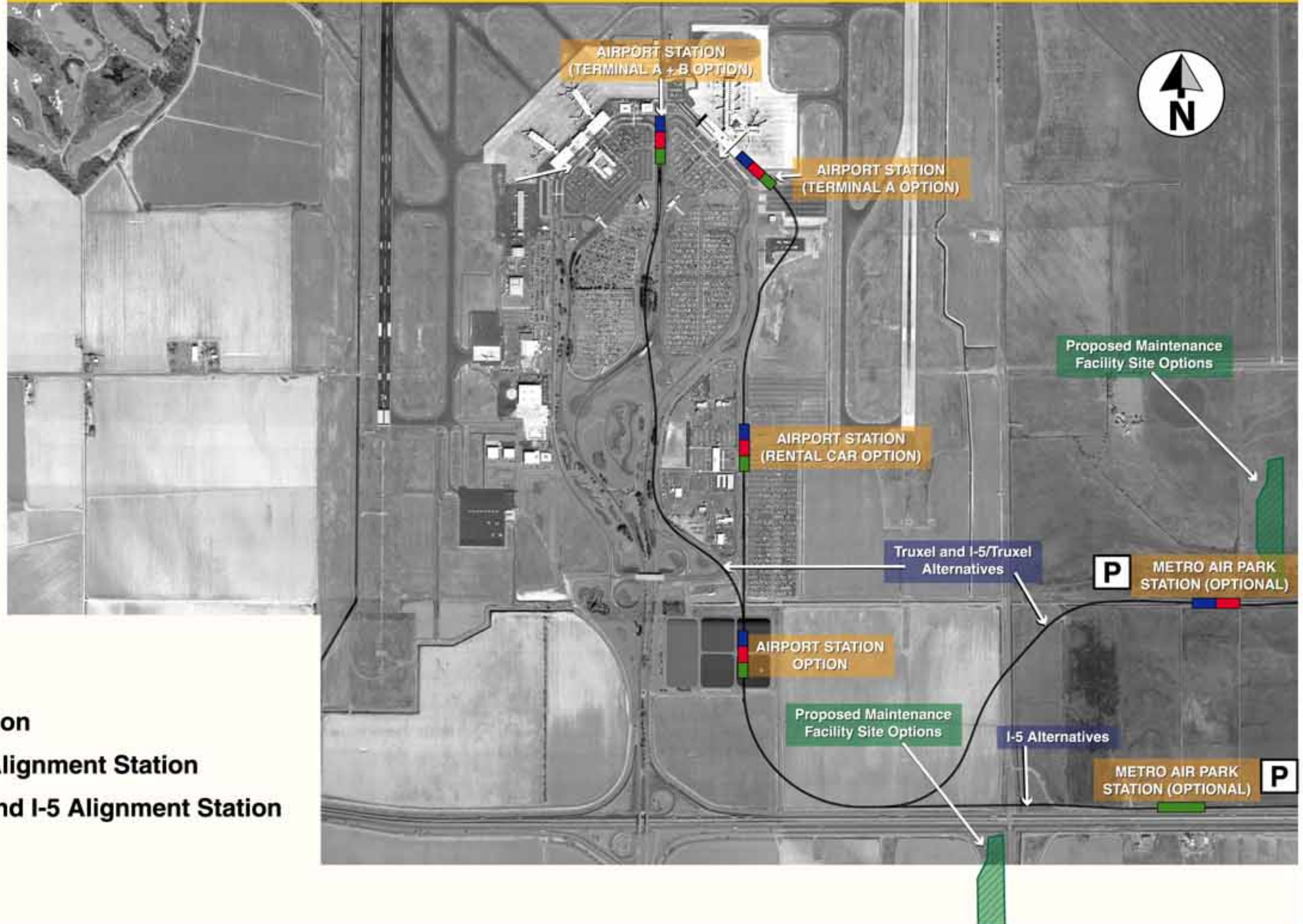


**Design Options:**  
 1 - Single Station at Terminal A/B  
 2 - Terminal A East Side Station (Primary)  
 A - Optional Station at Rental Car Facility/New Development  
 — Truxel Alignment and I-5/Truxel Alignment  
 — I-5 Alignment

# What are the significant environmental impacts from Highway 99 to the airport?

Resource / Alternative	Community Impact	Property Acquisition (maximum acquisitions)	Environmental Justice (disturbance to low income and minorities)	Environmental Justice (population of low income and minorities served)	Cultural Resources (historical and/or archeological sites)	Parklands (acres disturbed)	Visual (miles of aerial structures)	Biological Habitat (acres of Threatened and Endangered species habitat impacted)	Construction (high/medium/low impacts related to noise, disruption of traffic flow and access)
Alternative 3, Truxel LRT		0 to 1					0.2		
Alternative 3A, Truxel LRT Starter Line		0 to 1					0.2		
Alternative 3B, Truxel LRT MOS							0		
Alternative 4, Truxel BRT		0					0.1		
Alternative 4A, Truxel BRT Starter Line							0.1		
Alternative 4B, Truxel BRT MOS	NO		NO	32/11	0	0	0	5 ACRES	LOW
Alternative 5, I-5/Truxel LRT		0 to 1					0.2		
Alternative 6, I-5/Truxel BRT		0					0.1		
Alternative 7, I-5 LRT		0 to 1					1.0		
Alternative 8, I-5 BRT		0					0.8		

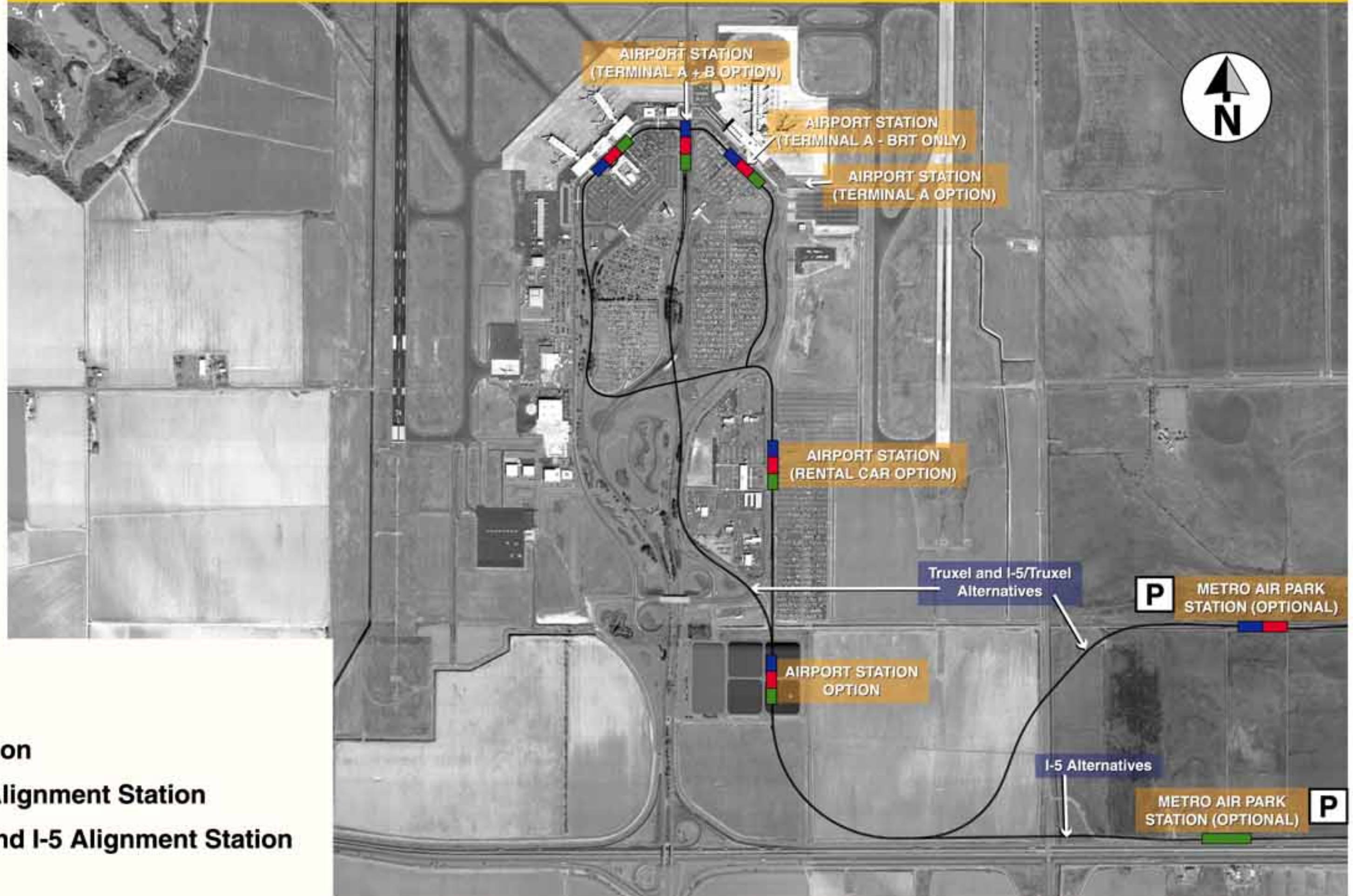
# Where are the LRT and BRT alignments and stations in the airport area?



**SYMBOL KEY:**

- P** = Park & Ride
- = I-5 Alignment Station
- = I-5/Truxel and I-5 Alignment Station
- = Truxel, I-5/Truxel and I-5 Alignment Station

# Where are the BRT alignments and stations in the airport area?



**SYMBOL KEY:**

- P** = Park & Ride
- = I-5 Alignment Station
- = I-5/Truxel and I-5 Alignment Station
- = Truxel, I-5/Truxel and I-5 Alignment Station