









What We Built

CENTRAL ARKANSAS TRANSIT

- 2.5 MILES OF TRACK AND OVERHEAD POWER
- 11 PLATFORMS
- 3 REPLICA STREETCARS
- TROLLEY BARN
- COST: \$20 MILLION (\$8 MILLION/MILE)





What We Are About to Add

CENTRAL ARKANSAS TRANSIT

- PHASE 2-BIDS OPEN 10/12/2005
- 4500' OF DOUBLE TRACK
- CONNECT TO CLINTON PRESIDENTIAL LIBRARY
- 2 MORE STREETCARS



CENTRAL ARKANSAS TRANSIT AUTHORITY
49 PEAK PULLOUTS
15 PARATRANSIT VANS
\$10 MILLION ANNUAL OPERATING BUDGET
NO DEDICATED FUNDING





What Has Happened So Far

CENTRAL ARKANSAS TRANSIT

- **OPENED NOVEMBER 1, 2004**
- **RIDERSHIP EXCEEDED PROJECTIONS**
 - 180,000 THROUGH AUGUST 30 2005
 - 15 TO 20,000 PER MONTH
- **WIDESPREAD PUBLIC ENTHUSIASM**
- **CATALYST FOR CONTINUED REDEVELOPMENT OF TWO DOWNTOWNS**
- **TOURISM MULTIPLIER**
- **DIVERSE LOCAL RIDERSHIP**
- **EVENT ENHANCER**
- **CONNECT THE CITIES**



1997 FEASIBILITY STUDY

PROJECT GOALS

- *TOURISM/ECONOMIC DEVELOP.*
- *CONVENTION VISITORS*
- *SUPPORT ARENA EVENTS*
- *ATTRACT A DOWNTOWN POPULATION*
- *REVIVE HISTORIC CONNECTION TO STREETCARS*

CENTRAL ARKANSAS TRANSIT



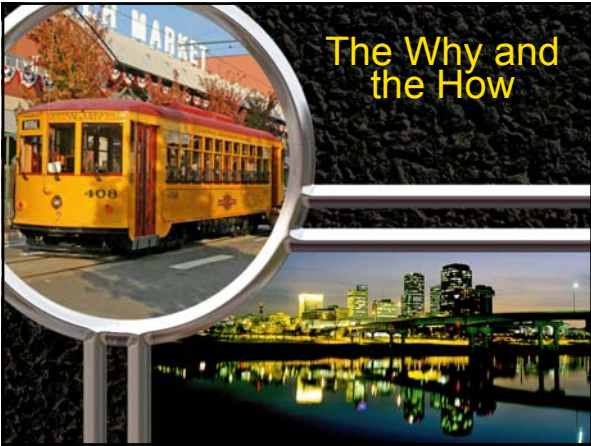
Connecting The Cities



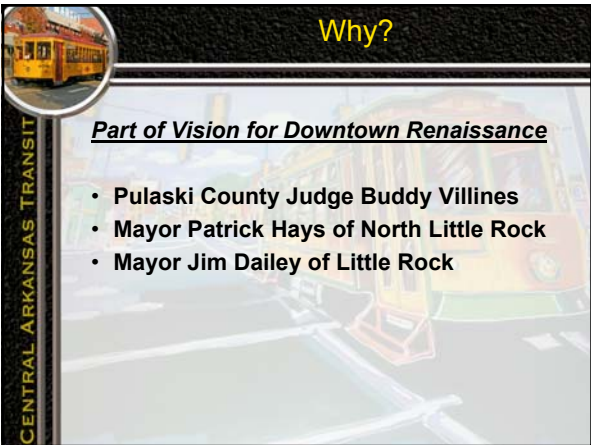








The Why and the How



Why?

Part of Vision for Downtown Renaissance

- Pulaski County Judge Buddy Villines
- Mayor Patrick Hays of North Little Rock
- Mayor Jim Dailey of Little Rock



PRIMARY ANCHORS

- ALTEL ARENA
- CONVENTION CENTER
- RIVER MARKET



On The Route-Little Rock

- Four hotels
- Three museums
- Concert hall
- Little Rock City Hall
- County Headquarters
- Statehouse
- Convention Center
- Lofts
- Office buildings
- Chamber of Commerce
- Central Arkansas Library
- River Market
 - Farmers Market, Entertainment, Restaurants and Bars, Clinton Museum Store





Why not use existing rail bridge & Riverfront Track?

CENTRAL ARKANSAS TRANSIT

Ins
the
stre
E





Planning & Community Input

CENTRAL ARKANSAS TRANSIT

- Design By Walking Around





How was the Project Funded?

CENTRAL ARKANSAS TRANSIT

- Federal government provided 80% of the funding we needed from three sources.
- Approximately half of federal funding came from New Starts and remainder garnered from Flexed STP and TEA 21 HPP funds.
- Local funding comprised 20% raised by Pulaski County, Little Rock and North Little Rock.

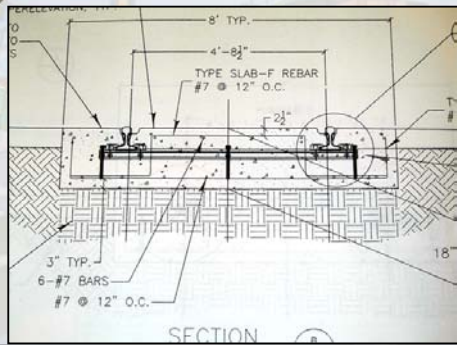


Total Cost

- \$20 million (<\$8 million per mile)
- Included design, purchase of 3 cars, trolley barn or maintenance facility, 2.5 miles of track and accompanying overhead electrical wiring.
- Received a supplementary appropriation of \$2 million for streetscape with grants from Livable Communities and TCSP earmarks.



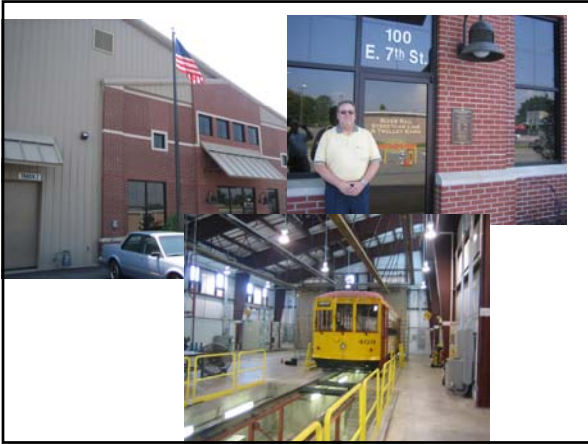
Typical Cross Section





Streetcars

- Built by Gomaco Trolley Company in Ida Grove, Iowa
- Double truck Birney replicas
- Trucks and controllers used for years in Milan, Italy
- Each car handicapped accessible with step well wheelchair lifts
- Air conditioning and heating in all cars
- 45.5 feet long and 8 feet 10 inches wide
- Constructed at \$800,000 each






Planned Expansion

CENTRAL ARKANSAS TRANSIT

- Extend current route to Clinton Library
- Serve headquarters of Heifer International, a worldwide charity based in Little Rock currently under construction
- 2 more cars on order



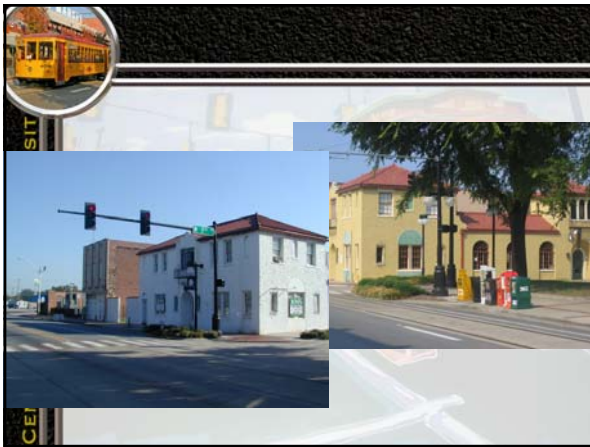


Supporting Economic Development

CENTRAL ARKANSAS TRANSIT

- Over \$1.0 billion has been spent by public and private entities in last decade to ensure two cities have bright future
- Over 300,000 visitors in Little Rock since opening of Clinton Library
- Developments over \$80 million announced in first 6 months
- Last Month
 - BallPark in NLR: \$28 million









Problem Areas Encountered

CENTRAL ARKANSAS TRANSIT

- Narrow street with on-street parking



- Bridge slope – added track brake
- Created white lines and erected warning signs
- Keep public educated of problem areas



Conclusion

CENTRAL ARKANSAS TRANSIT

- **STREETCARS ARE BRINGING CHARACTER BACK TO OUR CITIES.**
 - CONNECTING WITH OUR PAST.
 - PROVIDING A UNIQUE, LEISURELY, COMFORTABLE MODE OF TRANSPORTATION.
 - STRENGTHENING SENSE OF COMMUNITY.



Thank You

Questions?

WWW.CAT.ORG
KJONES@CAT.ORG
