



Ridership Report (September 2019)

Year to Date Summary

Category	FY20 YTD	FY19YTD	Difference	% Change
Bus	2,459,253	2,401,500	57,753	2.4%
Light Rail	2,784,436	2,615,499	168,937	6.5%
System Total	5,243,689	5,016,999	226,690	4.5%

Current Month Summary

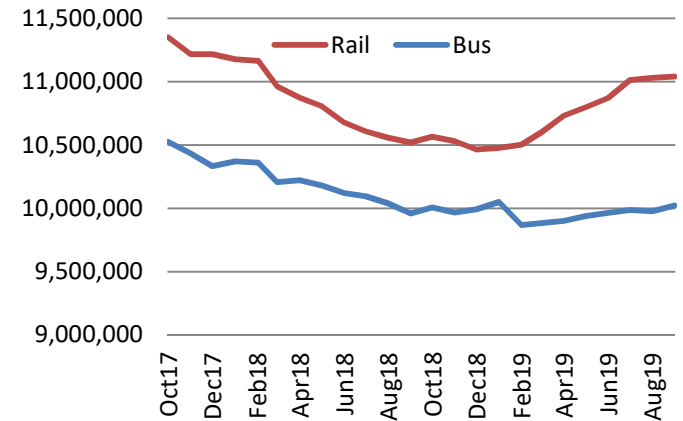
Category	September 2019*	September 2018*	Difference	% Change
Bus	916,745	870,896	45,849	5.3%
Light Rail	925,198	915,373	9,825	1.1%
System Total	1,841,943	1,786,269	55,674	3.1%

*September 2019 had 1 more weekday than September 2018

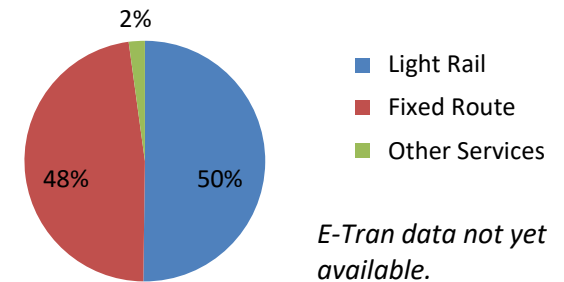
Daily Summary

Category	September 2019	September 2018	Difference	% Change
Bus (M-F)	40,067	39,829	238	0.6%
Bus (Sat)	13,972	12,859	1,114	8.7%
Bus (Sun)	9,522	8,123	1,400	17.2%
Light Rail (M-F)	39,486	41,710	(2,224)	-5.3%
Light Rail (Sat)	15,768	12,600	3,168	25.1%
Light Rail (Sun)	11,899	9,700	2,199	22.7%

Rolling 24 Month Trend



September Ridership by Mode



Route Level Ridership Comparison (Bus)

Weekday Route Comparison

Route	Sep 2019	Sep 2018	Difference	% Change
1	2,058	2,206	(147)	-7%
11	915	710	206	29%
13	527	311	216	70%
15	805	1,198	(394)	-33%
19	475	649	(174)	-27%
21	1,228	1,088	140	13%
23	1,731	1,669	62	4%
25	1,150	1,040	110	11%
26	1,453	1,074	379	35%
30	2,119	2,053	66	3%
33	269	238	31	13%
38	685	409	276	67%
51	3,308	3,347	(39)	-1%
56	1,121	1,140	(20)	-2%
61	760	564	195	35%
62	1,275	1,221	54	4%
67	1,361	1,168	193	17%
68	1,781	1,213	568	47%
72	1,242	1,111	131	12%
75	409	181	228	126%
81	3,065	2,798	266	10%
82	2,025	2,023	2	0%
84	1,380	811	569	70%
86	1,268	1,226	42	3%
87	1,501	1,389	113	8%
88	826	807	18	2%
93	791	843	(53)	-6%
102	220	-	220	
103	186	68	118	173%
105	50	-	50	
106	109	-	109	
107	107	-	107	
109	107	100	7	7%
113	70	-	70	
129	92	-	92	
134	132	-	132	
161	15	-	15	
170	238	180	58	32%
171	84	69	15	22%
172	178	141	37	26%
174	67	41	26	63%
175	38	33	5	14%
176	34	51	(16)	-33%
177	142	102	40	39%
193	63	-	63	
205	28	38	(11)	-28%
206	22	44	(22)	-50%
210	45	41	4	10%
211	95	108	(14)	-13%
212	88	93	(5)	-6%
213	47	57	(10)	-18%
214	36	37	(1)	-3%
226	24	35	(11)	-33%
227	17	15	2	16%
228	34	39	(6)	-14%
246	50	42	8	19%
247	15	19	(3)	-19%
248	45	31	14	44%
252	33	48	(14)	-30%
255	52	53	(0)	0%
SmaRT Ride	465	334	131	39%
Folsom FR	401	-	401	
Folsom DAR	58	-	58	

Saturday Route Comparison

Route	Sep 2019	Sep 2018	Difference	% Change
1	749	782	(33)	-4%
11	406	293	113	38%
13	278	-	278	
15	386	523	(137)	-26%
19	206	255	(49)	-19%
21	526	504	22	4%
23	1,027	1,140	(113)	-10%
25	454	393	61	16%
26	575	287	288	101%
30	385	550	(164)	-30%
38	245	194	51	26%
51	1,665	1,505	160	11%
55	41	225	(184)	-82%
56	482	442	39	9%
61	221	-	221	
62	250	317	(67)	-21%
67	250	317	(67)	-21%
68	805	560	245	44%
72	257	233	24	10%
75	166	127	39	31%
80	147	625	(479)	-77%
81	1,197	1,136	60	5%
82	513	530	(17)	-3%
84	689	334	354	106%
86	418	392	25	6%
87	544	418	126	30%
88	297	250	47	19%
93	307	274	33	12%

Sunday Route Comparison

Route	Sep 2019	Sep 2018	Difference	% Change
1	546	532	14	3%
11	202	-	202	
13	195	-	195	
15	300	416	(115)	-28%
19	175	205	(29)	-14%
21	380	359	21	6%
23	714	662	52	8%
25	202	-	202	
26	280	189	92	48%
30	272	228	44	19%
38	199	129	70	54%
51	1,232	1,043	190	18%
55	55	150	(95)	-63%
56	314	276	38	14%
61	133	-	133	
62	107	-	107	
67	488	433	55	13%
68	530	444	86	19%
72	191	166	24	15%
75	139	115	24	21%
80	165	446	(282)	-63%
81	770	587	184	31%
82	418	359	60	17%
84	318	-	318	
86	316	223	93	42%
87	387	188	199	106%
88	269	193	76	39%
93	225	220	4	2%

Please note:

Only Routes operating post SacRT forward are shown above.

Average Weekday Boardings by Station by Line

Station Name	Sep19	Sep18	Difference	% Change
BLUE LINE - Total	20,192	22,200	(2,008)	-9.05%
12TH & I STATION	479	559	(80)	-14.33%
13TH STREET STATION	551	617	(66)	-10.76%
16TH STREET STATION	1,750	1,916	(166)	-8.66%
47TH AVENUE STATION	598	658	(60)	-9.11%
4TH AVE/WAYNE HULTGREN STATION	643	653	(10)	-1.58%
7TH & CAPITOL STATION	755	861	(106)	-12.30%
8TH & CAPITOL STATION	423	464	(41)	-8.89%
8TH & O STATION	805	911	(106)	-11.61%
ALKALI FLAT/LA VALENTINA STA	717	821	(104)	-12.62%
ARCHIVES PLAZA STATION	510	611	(101)	-16.48%
ARDEN/DEL PASO STATION	843	937	(94)	-10.02%
BROADWAY STATION	704	780	(76)	-9.74%
CATHEDRAL SQUARE STATION	766	928	(162)	-17.46%
CENTER PARKWAY STATION	308	315	(6)	-2.02%
CITY COLLEGE STATION	1,293	1,088	205	18.84%
CRC STATION	1,545	1,560	(15)	-0.99%
FLORIN STATION	1,003	1,065	(62)	-5.83%
FRANKLIN STATION	744	836	(92)	-10.98%
FRUITRIDGE STATION	520	536	(16)	-2.99%
GLOBE AVENUE STATION	247	309	(62)	-20.09%
MARCONI/ARCADE STATION	695	833	(138)	-16.60%
MEADOWVIEW STATION	971	1,057	(86)	-8.10%
ROSEVILLE ROAD STATION	639	759	(120)	-15.80%
ROYAL OAKS STATION	385	470	(85)	-18.00%
ST ROSE OF LIMA PARK STATION	606	713	(107)	-14.99%
SWANSTON STATION	245	294	(49)	-16.69%
Watt/I-80 Station	1,253	1,397	(144)	-10.30%
WATT/I-80 WEST STATION	133	162	(29)	-17.89%
GOLD LINE - Total	18,674	19,100	(426)	-2.23%
13TH STREET STATION	679	701	(22)	-3.12%
16TH STREET STATION	1,828	1,819	8	0.47%
23RD STREET STATION	504	542	(38)	-7.03%
29TH STREET STATION	1,476	1,533	(57)	-3.69%
39TH STREET STATION	291	296	(5)	-1.58%
48TH STREET STATION	221	247	(27)	-10.81%
59TH STREET STATION	245	276	(31)	-11.37%
7TH & CAPITOL STATION	932	1,007	(75)	-7.42%
7TH & I/COUNTY CENTER STATION	364	383	(19)	-5.03%
8TH & CAPITOL STATION	58	60	(2)	-3.27%
8TH & H STATION	84	83	1	0.63%
8TH & K STATION	81	86	(5)	-6.06%
8TH & O STATION	768	809	(41)	-5.08%
ARCHIVES PLAZA STATION	575	655	(80)	-12.24%
BUTTERFIELD STATION	518	573	(54)	-9.47%
COLLEGE GREENS STATION	661	683	(22)	-3.23%
CORDOVA TOWN CENTER STATION	501	501	1	0.18%
GLENN STATION	267	274	(7)	-2.59%
HAZEL STATION	190	179	11	5.89%

HISTORIC FOLSOM STATION	528	524	4	0.81%
IRON POINT STATION	498	483	16	3.24%
MATHER FIELD/MILLS STATION	1,441	1,421	20	1.43%
POWER INN STATION	540	557	(17)	-3.06%
SACRAMENTO VALLEY STATION	486	543	(57)	-10.42%
STARFIRE STATION	331	319	12	3.71%
SUNRISE STATION	846	873	(26)	-3.00%
TIBER STATION	297	307	(10)	-3.16%
UNIVERSITY/65TH STREET STATION	1,610	1,475	136	9.19%
WATT/MANLOVE STATION	1,025	1,065	(40)	-3.77%
ZINFANDEL STATION	819	813	6	0.71%
GREEN LINE - Total	620	410	210	51.22%
13TH STREET STATION	146	95	51	53.81%
7TH & CAPITOL STATION	42	26	16	59.71%
7TH & I/COUNTY CENTER STATION	37	25	12	46.83%
8TH & CAPITOL STATION	29	19	11	56.65%
8TH & K STATION	61	50	10	20.74%
8TH & O STATION	37	23	14	59.92%
ARCHIVES PLAZA STATION	35	26	9	35.29%
TOWNSHIP 9 STATION	234	146	88	59.97%
All Stations	39,486	41,710	(2,224)	-5.33%

Average Weekday Alightings by Station by Line

Station Name	Sep19	Sep18	Difference	% Change
BLUE LINE - Rt#533	20,479	20,506	(27)	-0.13%
12TH & I STATION	514	548	(35)	-6.30%
13TH STREET STATION	564	598	(34)	-5.69%
16TH STREET STATION	1,821	1,826	(5)	-0.30%
47TH AVENUE STATION	646	628	18	2.79%
4TH AVE/WAYNE HULTGREN STATION	564	493	70	14.28%
7TH & CAPITOL STATION	657	705	(48)	-6.80%
8TH & CAPITOL STATION	534	540	(6)	-1.04%
8TH & O STATION	714	774	(60)	-7.75%
ALKALI FLAT/LA VALENTINA STATION	726	760	(34)	-4.52%
ARCHIVES PLAZA STATION	473	524	(50)	-9.62%
ARDEN/DEL PASO STATION	912	911	0	0.05%
BROADWAY STATION	756	749	7	0.93%
CATHEDRAL SQUARE STATION	794	905	(111)	-12.21%
CENTER PARKWAY STATION	278	236	43	18.12%
CITY COLLEGE STATION	1,289	927	362	39.04%
CRC STATION	1,573	1,523	50	3.28%
FLORIN STATION	1,047	996	51	5.10%
FRANKLIN STATION	760	746	15	1.96%
FRUITRIDGE STATION	554	494	59	12.02%
GLOBE AVENUE STATION	265	300	(35)	-11.55%
MARCONI/ARCADE STATION	667	745	(78)	-10.45%
MEADOWVIEW STATION	1,001	973	28	2.87%
ROSEVILLE ROAD STATION	663	720	(57)	-7.95%
ROYAL OAKS STATION	397	441	(44)	-9.90%
ST ROSE OF LIMA PARK STATION	545	560	(15)	-2.64%
SWANSTON STATION	247	281	(34)	-12.17%
Watt/I-80 Station	1,318	1,368	(50)	-3.69%
WATT/I-80 WEST STATION	137	154	(17)	-10.94%
GOLD LINE - Rt#507	18,436	20,586	(2,150)	-10.44%
13TH STREET STATION	566	626	(60)	-9.57%
16TH STREET STATION	1,874	1,979	(106)	-5.33%
23RD STREET STATION	466	572	(105)	-18.43%
29TH STREET STATION	1,449	1,621	(172)	-10.61%
39TH STREET STATION	284	312	(28)	-8.91%
48TH STREET STATION	234	288	(54)	-18.65%
59TH STREET STATION	259	316	(57)	-17.91%
7TH & CAPITOL STATION	60	68	(8)	-11.74%
7TH & I/COUNTY CENTER STATION	27	30	(3)	-9.04%
8TH & CAPITOL STATION	671	791	(120)	-15.20%
8TH & H STATION	341	400	(59)	-14.73%
8TH & K STATION	642	782	(140)	-17.90%
8TH & O STATION	632	762	(130)	-17.07%
ARCHIVES PLAZA STATION	594	719	(125)	-17.34%
BUTTERFIELD STATION	490	599	(110)	-18.29%
COLLEGE GREENS STATION	619	709	(90)	-12.68%
CORDOVA TOWN CENTER STATION	459	504	(45)	-8.91%
GLENN STATION	240	281	(41)	-14.49%

HAZEL STATION	168	186	(18)	-9.85%
HISTORIC FOLSOM STATION	496	559	(63)	-11.20%
IRON POINT STATION	461	502	(41)	-8.16%
MATHER FIELD/MILLS STATION	1,336	1,462	(126)	-8.61%
POWER INN STATION	527	591	(64)	-10.82%
SACRAMENTO VALLEY STATION	435	505	(69)	-13.72%
SACRAMENTO VALLEY STATION	340	277	63	22.68%
STARFIRE STATION	279	304	(25)	-8.17%
SUNRISE STATION	774	908	(135)	-14.81%
TIBER STATION	274	317	(43)	-13.47%
UNIVERSITY/65TH STREET STATION	1,619	1,587	32	2.02%
WATT/MANLOVE STATION	1,003	1,136	(133)	-11.68%
ZINFANDEL STATION	813	889	(76)	-8.52%
GREEN LINE - Rt#519	571	618	(47)	-7.62%
13TH STREET STATION	176	199	(23)	-11.75%
7TH & CAPITOL STATION	51	50	2	3.58%
7TH & I/COUNTY CENTER STATIO	67	69	(2)	-2.77%
8TH & CAPITOL STATION	10	13	(3)	-21.83%
8TH & K STATION	22	37	(14)	-39.38%
8TH & O STATION	30	30	0	0.43%
ARCHIVES PLAZA STATION	29	32	(3)	-9.59%
TOWNSHIP 9 STATION	186	189	(3)	-1.82%
All Stations	39,486	41,710	(2,224)	-5.33%

Average Saturday Boardings by Station by Line

Station Name	Sep19	Sep18	Difference	% Change
BLUE LINE - Rt#533	7,968	6,200	1,768	28.52%
12TH & I STATION	136	126	10	8.27%
13TH STREET STATION	208	158	50	31.97%
16TH STREET STATION	714	566	148	26.09%
47TH AVENUE STATION	203	154	49	31.85%
4TH AVE/WAYNE HULTGREN STATION	143	112	31	27.21%
7TH & CAPITOL STATION	353	268	85	31.84%
8TH & CAPITOL STATION	93	68	25	36.68%
8TH & O STATION	100	87	13	14.42%
ALKALI FLAT/LA VALENTINA STATION	396	305	91	29.81%
ARCHIVES PLAZA STATION	75	62	13	20.49%
ARDEN/DEL PASO STATION	472	370	102	27.68%
BROADWAY STATION	416	289	127	44.11%
CATHEDRAL SQUARE STATION	301	271	30	11.09%
CENTER PARKWAY STATION	141	108	33	30.97%
CITY COLLEGE STATION	260	175	85	48.27%
CRC STATION	590	420	171	40.64%
FLORIN STATION	440	340	100	29.48%
FRANKLIN STATION	207	155	52	33.42%
FRUITRIDGE STATION	235	174	61	35.02%
GLOBE AVENUE STATION	128	97	31	31.58%
MARCONI/ARCADE STATION	295	289	6	2.12%
MEADOWVIEW STATION	420	321	99	30.87%
ROSEVILLE ROAD STATION	93	85	8	9.64%
ROYAL OAKS STATION	274	216	58	27.08%
ST ROSE OF LIMA PARK STATION	388	289	99	34.21%
SWANSTON STATION	112	94	18	19.49%
Watt/I-80 Station	716	542	174	32.19%
WATT/I-80 WEST STATION	19	18	1	2.84%
GOLD LINE - Rt#507	7,800	6,400	1,400	21.88%
13TH STREET STATION	246	187	59	31.24%
16TH STREET STATION	724	613	111	18.03%
23RD STREET STATION	184	154	31	19.87%
29TH STREET STATION	555	466	89	19.09%
39TH STREET STATION	136	101	34	33.88%
48TH STREET STATION	82	86	(4)	-4.21%
59TH STREET STATION	118	95	24	25.11%
7TH & CAPITOL STATION	402	306	97	31.65%
7TH & I/COUNTY CENTER STATION	112	96	16	16.65%
8TH & CAPITOL STATION	24	26	(2)	-7.41%
8TH & H STATION	36	26	10	39.59%
8TH & K STATION	53	51	2	3.69%
8TH & O STATION	133	103	30	28.87%
ARCHIVES PLAZA STATION	90	83	8	9.11%
BUTTERFIELD STATION	153	129	24	19.03%
COLLEGE GREENS STATION	430	374	56	15.01%
CORDOVA TOWN CENTER STATION	240	187	53	28.57%
GLENN STATION	58	52	6	11.21%

HAZEL STATION	85	62	22	35.98%
HISTORIC FOLSOM STATION	283	223	59	26.61%
IRON POINT STATION	232	176	56	32.05%
MATHER FIELD/MILLS STATION	660	561	99	17.56%
POWER INN STATION	192	172	21	12.05%
SACRAMENTO VALLEY STATION	333	263	70	26.80%
ST ROSE OF LIMA PARK STATION	1	4	(3)	-73.49%
STARFIRE STATION	184	150	34	23.04%
SUNRISE STATION	379	302	78	25.70%
TIBER STATION	151	120	31	26.05%
UNIVERSITY/65TH STREET STATION	582	456	126	27.62%
WATT/MANLOVE STATION	416	324	92	28.31%
ZINFANDEL STATION	526	455	71	15.68%
Final Total - Boardings	15,940	12,600	3,340	26.51%

Average Saturday Alightings by Station by Line

Station Name	Sep19	Sep18	Difference	% Change
BLUE LINE - Rt#533	7,954	6,324	1,631	25.79%
12TH & I STATION	138	123	15	12.30%
13TH STREET STATION	217	165	52	31.52%
16TH STREET STATION	759	622	136	21.85%
47TH AVENUE STATION	198	159	39	24.42%
4TH AVE/WAYNE HULTGREN STATION	126	112	14	12.98%
7TH & CAPITOL STATION	272	202	71	35.00%
8TH & CAPITOL STATION	169	103	66	63.89%
8TH & O STATION	111	85	27	31.71%
ALKALI FLAT/LA VALENTINA STATION	375	310	65	20.99%
ARCHIVES PLAZA STATION	76	50	25	50.05%
ARDEN/DEL PASO STATION	497	385	112	29.19%
BROADWAY STATION	412	317	95	29.86%
CATHEDRAL SQUARE STATION	326	305	21	6.79%
CENTER PARKWAY STATION	126	98	28	28.63%
CITY COLLEGE STATION	266	161	105	65.24%
CRC STATION	606	450	156	34.78%
FLORIN STATION	473	361	112	31.00%
FRANKLIN STATION	190	132	58	43.53%
FRUITRIDGE STATION	231	166	65	39.21%
GLOBE AVENUE STATION	133	104	29	27.52%
MARCONI/ARCADE STATION	293	288	5	1.75%
MEADOWVIEW STATION	391	324	67	20.50%
ROSEVILLE ROAD STATION	97	96	1	1.04%
ROYAL OAKS STATION	258	244	14	5.77%
ST ROSE OF LIMA PARK STATION	280	230	50	21.83%
SWANSTON STATION	124	85	40	47.14%
Watt/I-80 Station	753	593	160	27.06%
WATT/I-80 WEST STATION	20	15	6	37.76%
GOLD LINE - Rt#507	7,814	6,276	1,537	24.49%
13TH STREET STATION	218	165	53	32.04%
16TH STREET STATION	757	642	115	17.90%

23RD STREET STATION	178	152	26	17.18%
29TH STREET STATION	526	413	113	27.36%
39TH STREET STATION	129	84	45	53.86%
48TH STREET STATION	101	88	14	15.77%
59TH STREET STATION	110	79	31	39.47%
7TH & CAPITOL STATION	37	25	12	50.26%
7TH & I/COUNTY CENTER STATION	16	16	0	1.11%
8TH & CAPITOL STATION	218	149	69	46.67%
8TH & H STATION	90	70	21	29.75%
8TH & K STATION	414	332	83	24.89%
8TH & O STATION	115	83	32	38.60%
ARCHIVES PLAZA STATION	80	83	(3)	-3.71%
BUTTERFIELD STATION	152	124	28	22.16%
COLLEGE GREENS STATION	402	354	47	13.39%
CORDOVA TOWN CENTER STATION	227	186	41	22.07%
GLENN STATION	69	42	27	64.57%
HAZEL STATION	70	57	12	21.46%
HISTORIC FOLSOM STATION	324	236	87	36.95%
IRON POINT STATION	243	176	67	38.34%
MATHER FIELD/MILLS STATION	640	564	76	13.45%
POWER INN STATION	182	145	37	25.28%
SACRAMENTO VALLEY STATIO	341	258	83	32.15%
SACRAMENTO VALLEY STATION	-	3	(3)	-100.00%
ST ROSE OF LIMA PARK STATION	0	0	(0)	-30.90%
STARFIRE STATION	171	144	27	18.46%
SUNRISE STATION	387	306	81	26.43%
TIBER STATION	123	106	17	15.83%
UNIVERSITY/65TH STREET STATION	581	442	139	31.46%
WATT/MANLOVE STATION	385	296	88	29.75%
ZINFANDEL STATION	527	455	72	15.84%
Final Total - Alightings	15,768	12,600	3,168	25.14%

Average Sunday Boardings by Station by Line

Station Name	Sep19	Sep18	Difference	% Change
BLUE LINE - Rt#533	5,898	4,400	1,498	34.05%
12TH & I STATION	109	95	14	14.63%
13TH STREET STATION	148	111	37	33.07%
16TH STREET STATION	562	402	160	39.79%
47TH AVENUE STATION	159	118	41	34.63%
4TH AVE/WAYNE HULTGREN STATION	109	76	33	44.05%
7TH & CAPITOL STATION	268	188	80	42.69%
8TH & CAPITOL STATION	63	49	14	28.97%
8TH & O STATION	82	66	16	24.53%
ALKALI FLAT/LA VALENTINA STATION	308	222	86	38.61%
ARCHIVES PLAZA STATION	58	39	19	48.87%
ARDEN/DEL PASO STATION	364	260	104	40.11%
BROADWAY STATION	274	206	69	33.29%
CATHEDRAL SQUARE STATION	251	207	44	21.44%
CENTER PARKWAY STATION	106	75	31	41.46%
CITY COLLEGE STATION	135	104	31	29.94%
CRC STATION	404	280	124	44.21%
FLORIN STATION	346	258	88	34.13%
FRANKLIN STATION	153	127	26	20.22%
FRUITRIDGE STATION	186	125	60	48.13%
GLOBE AVENUE STATION	96	79	17	21.71%
MARCONI/ARCADE STATION	233	166	67	40.36%
MEADOWVIEW STATION	309	225	83	36.88%
ROSEVILLE ROAD STATION	80	70	10	14.58%
ROYAL OAKS STATION	193	168	25	14.71%
ST ROSE OF LIMA PARK STATION	281	208	73	35.03%
SWANSTON STATION	79	60	19	32.24%
Watt/I-80 Station	496	372	123	33.10%
WATT/I-80 WEST STATION	14	13	1	11.59%
GOLD LINE - Rt#507	6,001	5,300	701	13.23%
13TH STREET STATION	200	167	32	19.32%
16TH STREET STATION	565	496	70	14.06%
23RD STREET STATION	129	120	9	7.90%
29TH STREET STATION	402	371	32	8.60%
39TH STREET STATION	91	83	8	9.04%
48TH STREET STATION	77	66	12	17.64%
59TH STREET STATION	87	70	16	23.24%
7TH & CAPITOL STATION	306	251	55	21.73%
7TH & I/COUNTY CENTER STATION	101	85	16	18.75%
8TH & CAPITOL STATION	19	21	(2)	-11.06%
8TH & H STATION	26	25	1	3.31%
8TH & K STATION	45	40	6	14.26%
8TH & O STATION	92	89	3	3.49%
ARCHIVES PLAZA STATION	68	64	4	7.06%
BUTTERFIELD STATION	119	111	9	8.00%
COLLEGE GREENS STATION	347	311	36	11.56%
CORDOVA TOWN CENTER STATION	188	161	27	16.98%
GLENN STATION	43	37	7	18.14%

HAZEL STATION	63	51	12	24.14%
HISTORIC FOLSOM STATION	206	175	30	17.22%
IRON POINT STATION	149	139	10	7.21%
MATHER FIELD/MILLS STATION	544	471	73	15.49%
POWER INN STATION	145	131	14	10.49%
SACRAMENTO VALLEY STATION	268	238	30	12.64%
STARFIRE STATION	131	131	(0)	-0.09%
SUNRISE STATION	304	263	41	15.50%
TIBER STATION	121	95	25	26.55%
UNIVERSITY/65TH STREET STATION	453	394	59	14.88%
WATT/MANLOVE STATION	277	259	18	6.91%
ZINFANDEL STATION	435	384	51	13.34%
Final Total - Boardings	11,899	9,700	2,199	22.67%

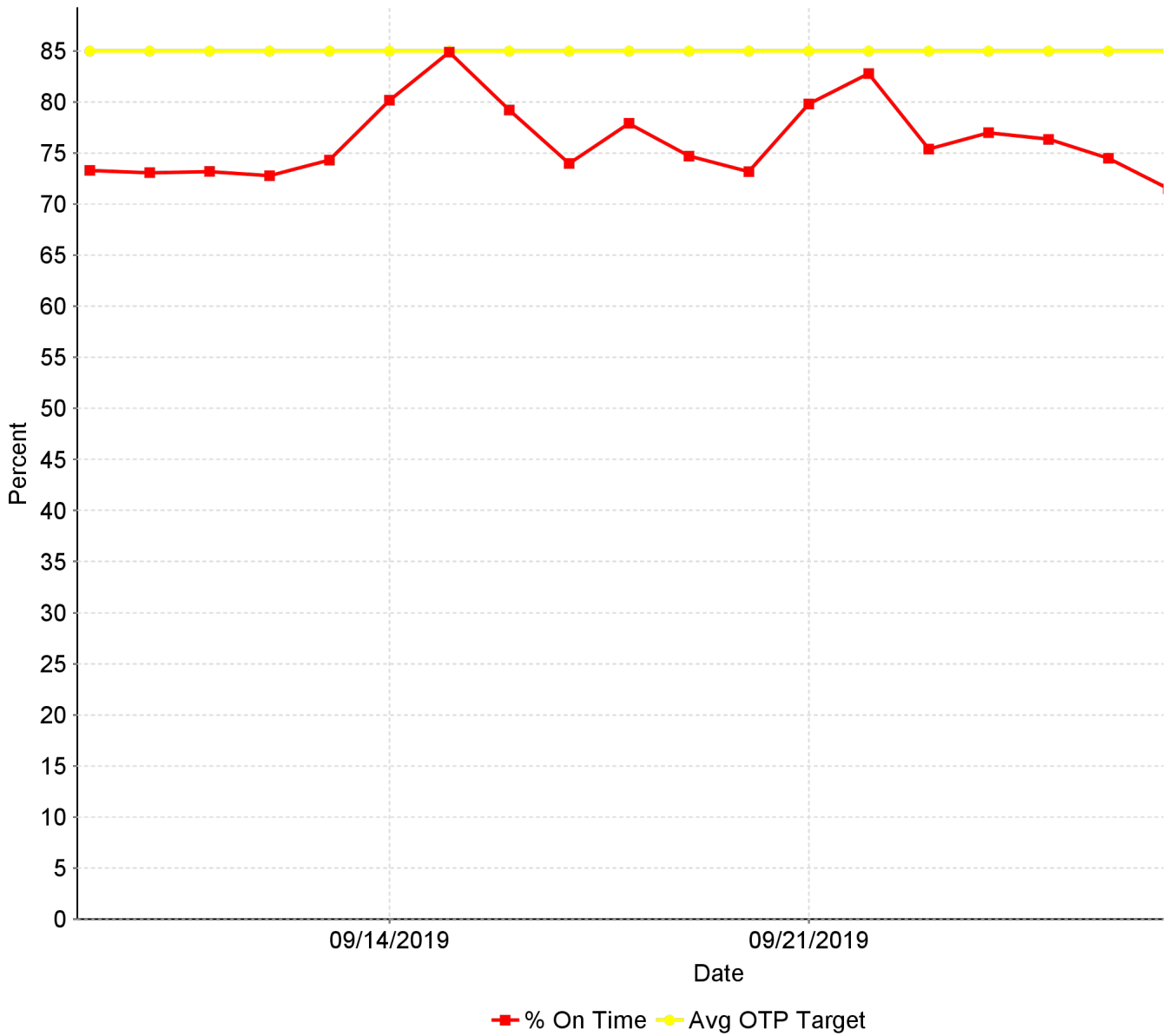
Average Sunday Alightings by Station by Line

Station Name	Sep19	Sep18	Difference	% Change
BLUE LINE - Rt#533	5,898	4,860	1,038	21.36%
12TH & I STATION	109	94	15	15.96%
13TH STREET STATION	148	131	17	12.94%
16TH STREET STATION	562	489	73	14.89%
47TH AVENUE STATION	159	130	28	21.86%
4TH AVE/WAYNE HULTGREN STATION	109	80	30	36.94%
7TH & CAPITOL STATION	268	161	108	67.10%
8TH & CAPITOL STATION	63	83	(20)	-24.37%
8TH & O STATION	82	65	17	26.40%
ALKALI FLAT/LA VALENTINA STATION	308	257	50	19.54%
ARCHIVES PLAZA STATION	58	40	18	45.60%
ARDEN/DEL PASO STATION	364	282	81	28.83%
BROADWAY STATION	274	245	30	12.15%
CATHEDRAL SQUARE STATION	251	227	24	10.62%
CENTER PARKWAY STATION	106	73	33	44.88%
CITY COLLEGE STATION	135	116	19	16.32%
CRC STATION	404	323	81	25.10%
EMPLOYEE PLATFORM STATION	32	29	3	10.01%
FLORIN STATION	346	296	50	17.02%
FRANKLIN STATION	153	117	36	30.31%
FRUITRIDGE STATION	186	137	49	36.05%
GLOBE AVENUE STATION	96	77	19	24.33%
MARCONI/ARCADE STATION	233	184	49	26.31%
MEADOWVIEW STATION	309	246	62	25.22%
ROSEVILLE ROAD STATION	80	74	6	8.00%
ROYAL OAKS STATION	193	202	(8)	-4.18%
ST ROSE OF LIMA PARK STATION	281	171	110	64.41%
SWANSTON STATION	79	69	10	14.41%
Watt/I-80 Station	496	452	44	9.73%
WATT/I-80 WEST STATION	14	9	5	54.81%
GOLD LINE - Rt#507	6,001	4,840	1,161	23.98%
13TH STREET STATION	200	128	72	56.40%
16TH STREET STATION	565	476	89	18.79%

23RD STREET STATION	129	117	12	10.42%
29TH STREET STATION	402	320	83	25.90%
39TH STREET STATION	91	81	9	11.28%
48TH STREET STATION	77	64	13	20.15%
59TH STREET STATION	87	62	24	39.21%
7TH & CAPITOL STATION	306	22	283	1266.17%
7TH & I/COUNTY CENTER STATION	101	12	89	724.38%
8TH & CAPITOL STATION	19	115	(96)	-83.47%
8TH & H STATION	26	51	(25)	-49.20%
8TH & K STATION	45	261	(216)	-82.69%
8TH & O STATION	92	70	22	31.22%
ARCHIVES PLAZA STATION	68	64	4	5.79%
BUTTERFIELD STATION	119	98	22	22.41%
COLLEGE GREENS STATION	347	279	67	24.15%
CORDOVA TOWN CENTER STATION	188	136	52	38.04%
GLENN STATION	43	27	16	61.48%
HAZEL STATION	63	46	17	38.09%
HISTORIC FOLSOM STATION	206	164	42	25.65%
IRON POINT STATION	149	125	24	19.07%
MATHER FIELD/MILLS STATION	544	412	132	32.13%
POWER INN STATION	145	121	24	19.78%
SACRAMENTO VALLEY STATIO	-	201	(201)	-100.00%
SACRAMENTO VALLEY STATION	268	1	267	19771.69%
ST ROSE OF LIMA PARK STATION	0	1	(0)	-47.24%
STARFIRE STATION	131	107	23	21.64%
SUNRISE STATION	304	268	36	13.43%
TIBER STATION	121	75	45	60.10%
UNIVERSITY/65TH STREET STATION	453	342	111	32.48%
WATT/MANLOVE STATION	277	232	44	19.12%
ZINFANDEL STATION	435	361	75	20.71%
Final Total - Alightings	11,899	9,700	2,199	22.67%

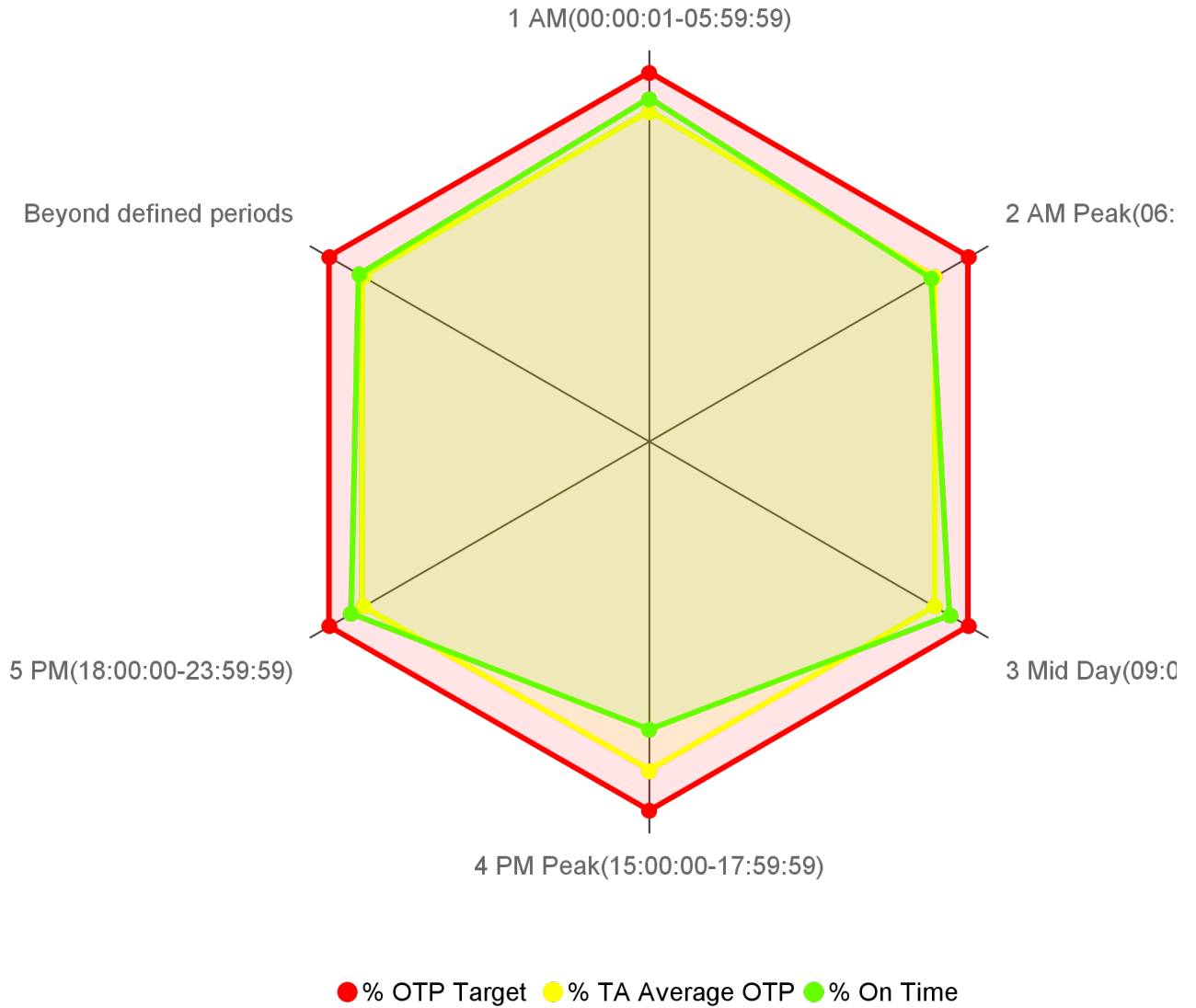
CR-0105 On Time Performance KPI Trend

On Time Performance



CR-0104 On Time Performance by Operational Period

On Time Performance by Operational Period

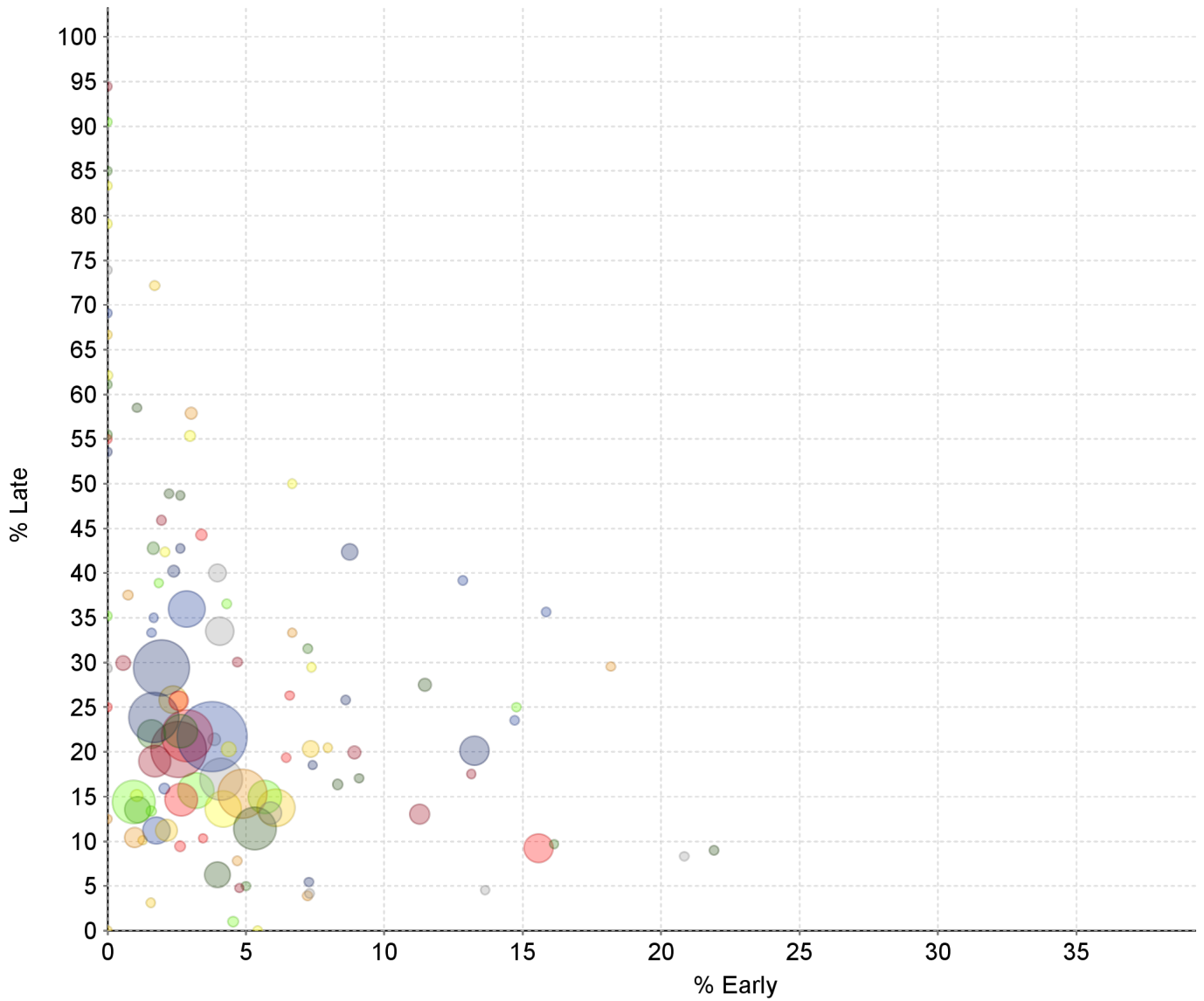


Transit Domain: Bus

Operational Period	% On Time	% TA Average OTP	% OTP Target	# On Time	# Processed
1 AM(00:00:01-05:59:59)	78.92	75.91	85.00	2,857	3,620
2 AM Peak(06:00:00-08:59:59)	75.13	75.91	85.00	35,689	47,501
3 Mid Day(09:00:00-14:59:59)	80.10	75.91	85.00	67,893	84,764
4 PM Peak(15:00:00-17:59:59)	66.36	75.91	85.00	34,934	52,645
5 PM(18:00:00-23:59:59)	79.32	75.91	85.00	40,096	50,550
Beyond defined periods	77.07	75.91	85.00	400	519

CR-0106 On Time Performance Graph

Shows all Routes together on one chart for easy visual indication of outliers.



Route	% Early	% Late	Timepoints Processed
10 - 10 FSL	2.57	25.73	2,880
20 - 20	0.00	79.07	86
001 - GREENBACK	0.95	14.40	9,201
011 - NATOMAS/LAND PARK	2.86	35.99	7,516
013 - NATOMAS/ARDEN	2.64	22.32	6,706
015 - DEL PASO HEIGHTS	2.13	11.23	3,429
019 - RIO LINDA	5.89	13.16	3,631
021 - SUNRISE	1.71	18.98	6,208
023 - EL CAMINO	1.68	23.85	11,151
025 - MARCONI	5.32	11.42	9,097
026 - FULTON	4.87	15.32	10,902
030 - J STREET	2.66	14.65	6,391
033 - DOS RIOS	4.38	20.29	1,577
038 - TAHOE PARK	5.68	14.95	6,584
051 - STOCKTON/BROADWAY	3.77	21.70	16,538
056 - MEADOWVIEW	1.59	22.01	5,276

Route	% Early	% Late	Timepoints Processed
061 - FRUITRIDGE	6.08	13.74	7,794
062 - FREEPORT	4.10	16.93	9,015
067 - FRANKLIN	2.57	20.26	12,736
068 - OAK PARK	1.95	29.42	12,722
072 - ROSEMONT	3.98	6.27	4,528
075 - MATHER	0.97	10.39	2,992
081 - FLORIN	2.87	21.80	11,585
082 - NORTHROP/MORSE	4.18	13.62	7,388
084 - WATT	3.19	15.70	7,276
086 - GRAND	1.77	11.22	4,984
087 - HOWE	1.09	13.53	4,699
088 - WEST EL CAMINO	2.37	25.84	5,158
093 - HILLSDALE	4.05	33.50	5,304
102 - RIVERSIDE COMMUTER	0.57	29.93	1,587
103 - RIVERSIDE EXPRESS	2.40	40.21	751
105 - ELSIE	1.06	58.51	94
106 - LAND PARK COMMUTER	3.02	57.87	762
107 - SOUTH LAND PARK EXPRESS	3.39	44.29	560
109 - HAZEL EXPRESS	2.98	55.36	504
113 - NORTH MARKET COMMUTER	4.53	1.01	397
129 - ARDEN COMMUTER	2.06	15.89	535
134 - MCKINLEY COMMUTER	1.65	42.79	846
161 - BELVEDERE	1.56	3.13	64
170 - JIBE EASTSIDE	3.98	40.03	2,363
171 - JIBE WESTSIDE	8.92	19.92	1,054
172 - JIBE CENTRAL	8.75	42.38	1,989
174 - JIBE MIDWEST	11.46	27.51	1,047
175 - RANCHO CORDOVAN - SUNRIDGE PARK	0.74	37.55	269
176 - RANCHO CORDOVAN - ANATOLIA	2.62	9.45	381
177 - RANCHO CORDOVAN - VILLAGES	1.06	15.12	853
193 - AUBURN COMMUTER	1.57	13.39	381
205 - Fruitridge Road - Freeport	12.84	39.19	148
206 - 12TH AVE - SUTTERVILLE RD	7.24	31.58	152
210 - LA RIVERA DR	1.27	10.13	79
211 - COLLEGE GREENS	0.00	29.37	126
212 - 14TH AVE - 21ST AVE	4.69	30.05	213
213 - FRUITRIDGE RD - STOCKTON BLVD	2.63	42.76	152
214 - BROADWAY - STOCKTON BLVD	21.91	8.99	178
226 - POCKET RD - RIVERSIDE BLVD	4.69	7.81	64
227 - SOUTH LAND PARK - GREENHAVEN DR	0.00	25.00	80
228 - GLORIA DR - RUSH RIVER DR	7.37	29.47	95

Route	% Early	% Late	Timepoints Processed
246 - MEADOWVIEW - GREENHAVEN	4.30	36.56	93
247 - 21ST ST - FLORIN RD	1.59	33.33	63
248 - MEADOWVIEW - RUSH RIVER	0.00	55.48	155
252 - FREEPORT - FRUITRIDGE - ML KING	1.70	72.16	176
255 - LA RIVIERA - COLLEGE GREENS	7.29	4.17	96
051X - W/X	11.27	13.04	2,999
DH090 - DeadHead from BT-21WX	7.27	5.45	55
DH091 - DeadHead from BT-24MV	2.22	48.89	45
DH092 - DeadHead from BT-34&T	40.00	0.00	30
DH093 - DeadHead from BT-5825	0.00	55.00	20
DH094 - DeadHead from BT-65TH	2.08	42.36	144
DH095 - DeadHead from BT-7&O	1.85	38.89	54
DH096 - DeadHead from BT-8&F	1.67	35.00	60
DH097 - DeadHead from BT-8&O	0.00	61.11	54
DH098 - DeadHead from BT-9&K	0.00	66.67	18
DH099 - DeadHead from BT-ARDN	20.83	8.33	24
DH100 - DeadHead from BT-BUTT	13.14	17.52	137
DH101 - DeadHead from BT-CRC	0.00	53.57	28
DH102 - DeadHead from BT-CSUS	8.31	16.36	385
DH103 - DeadHead from BT-DEMA2	0.00	12.50	32
DH104 - DeadHead from BT-F&7	6.58	26.32	76
DH105 - DeadHead from BT-FLGH	6.67	50.00	30
DH106 - DeadHead from BT-FLHI	0.00	90.48	21
DH107 - DeadHead from BT-FMEB	14.71	23.53	34
DH108 - DeadHead from BT-FMWB	0.00	85.00	20
DH109 - DeadHead from BT-FOCG	0.00	0.00	32
DH110 - DeadHead from BT-FRST	13.64	4.55	22
DH111 - DeadHead from BT-GRHV	4.76	4.76	21
DH112 - DeadHead from BT-HOCT	7.41	18.52	27
DH113 - DeadHead from BT-I-80	9.09	17.05	88
DH114 - DeadHead from BT-J&4	6.67	33.33	30
DH115 - DeadHead from BT-LAWA	6.45	19.35	31
DH116 - DeadHead from BT-LNSG	0.00	83.33	24
DH117 - DeadHead from BT-LOOR	0.00	35.21	71
DH118 - DeadHead from BT-LPVA	0.00	69.09	55
DH119 - DeadHead from BT-LRIV	16.13	9.68	31
DH120 - DeadHead from BT-MATH	7.95	20.45	88
DH121 - DeadHead from BT-MEDV	0.00	73.91	23
DH122 - DeadHead from BT-MK47	0.00	94.44	18
DH123 - DeadHead from BT-MNLV	8.60	25.81	93
DH124 - DeadHead from BT-NGNM	41.94	0.00	31

Route	% Early	% Late	Timepoints Processed
DH125 - DeadHead from BT-NROD	18.18	29.55	44
DH126 - DeadHead from BT-POCK	3.45	10.34	29

Route	% Early	% Late	Timepoints Processed
DH127 - DeadHead from BT-RRWB	0.00	62.13	169
DH128 - DeadHead from BT-SACV	14.77	25.00	88
DH129 - DeadHead from BT-SRML	15.84	35.64	101
DH130 - DeadHead from BT-STOC	5.00	5.00	20
DH131 - DeadHead from BT-WTNB	7.34	20.32	2,003
DH132 - DeadHead from BT-WTSB	3.86	21.40	958
PI023 - Pull-in to BT-CBS	1.95	45.91	257
PI024 - Pull-in to BT-DTG	13.25	20.12	5,538
PI025 - Pull-in to BT-HAZEL	2.63	48.68	76
PO018 - Pull-out from BT-CBS	7.22	3.89	180
PO019 - Pull-out from BT-DTG	15.57	9.23	5,395
PO020 - Pull-out from BT-HAZEL	5.43	0.00	129

CR-0103 Overall On Time

Overall On Time Timepoints

On Time	Early	Late	Timepoints Processed
75.91%	3.96%	20.13%	239,599