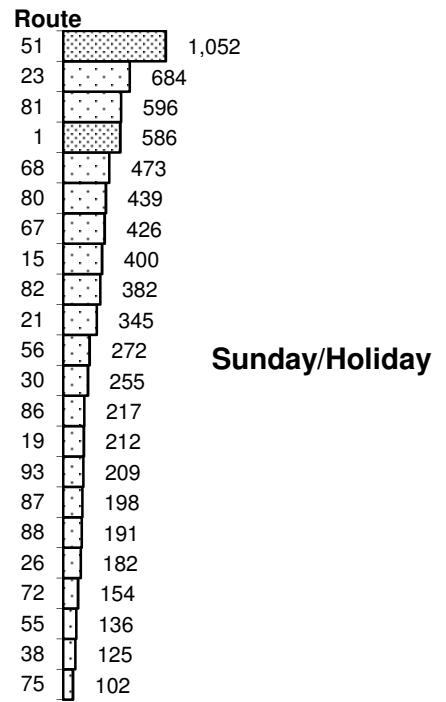
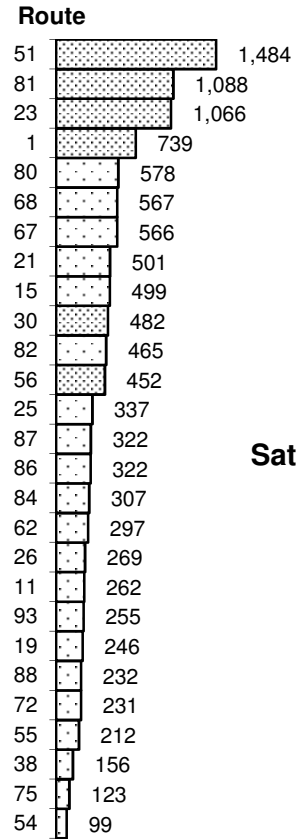
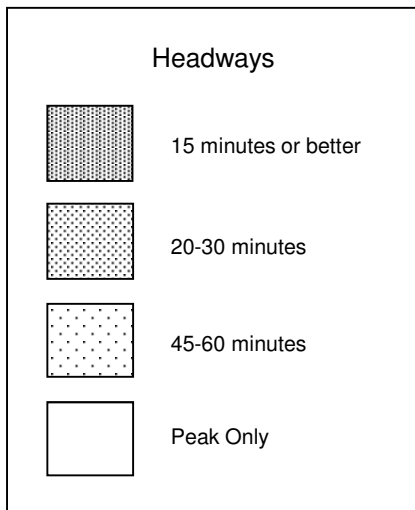
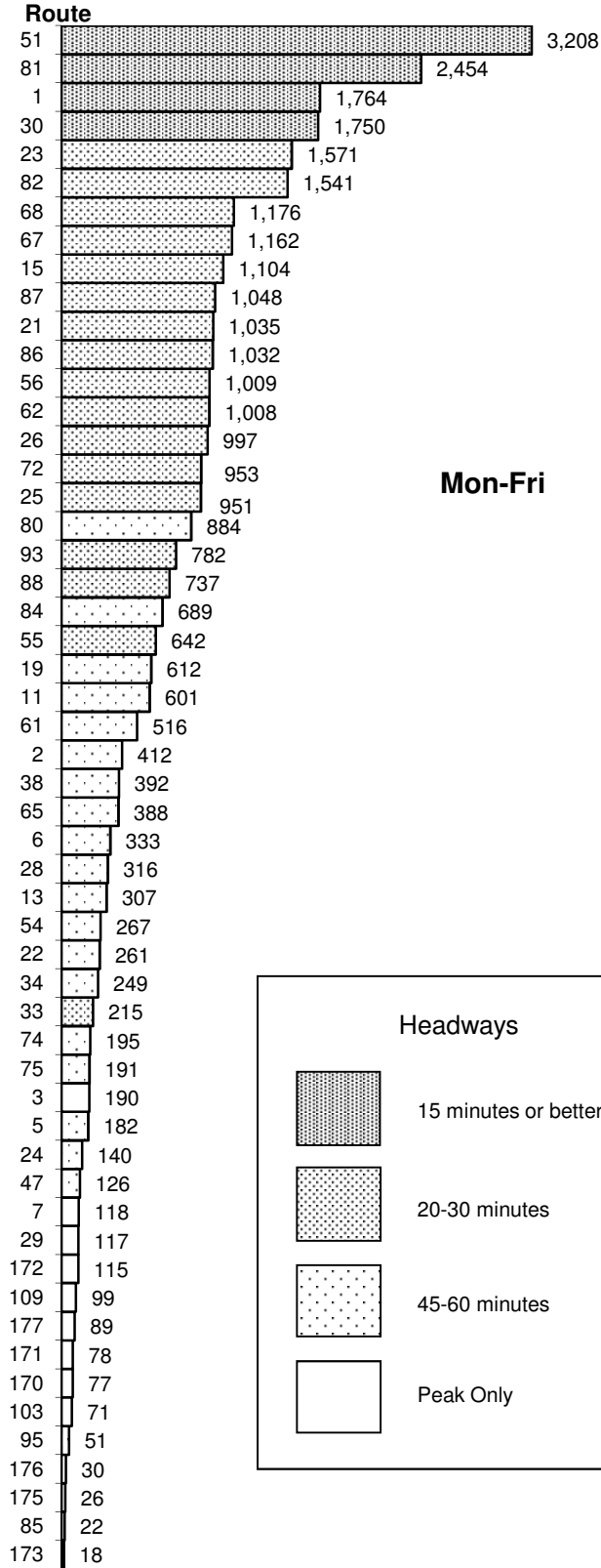
 **Regional Transit**
Quarterly Ridership Report
Period Ending June 30, 2018

Average Daily Boardings

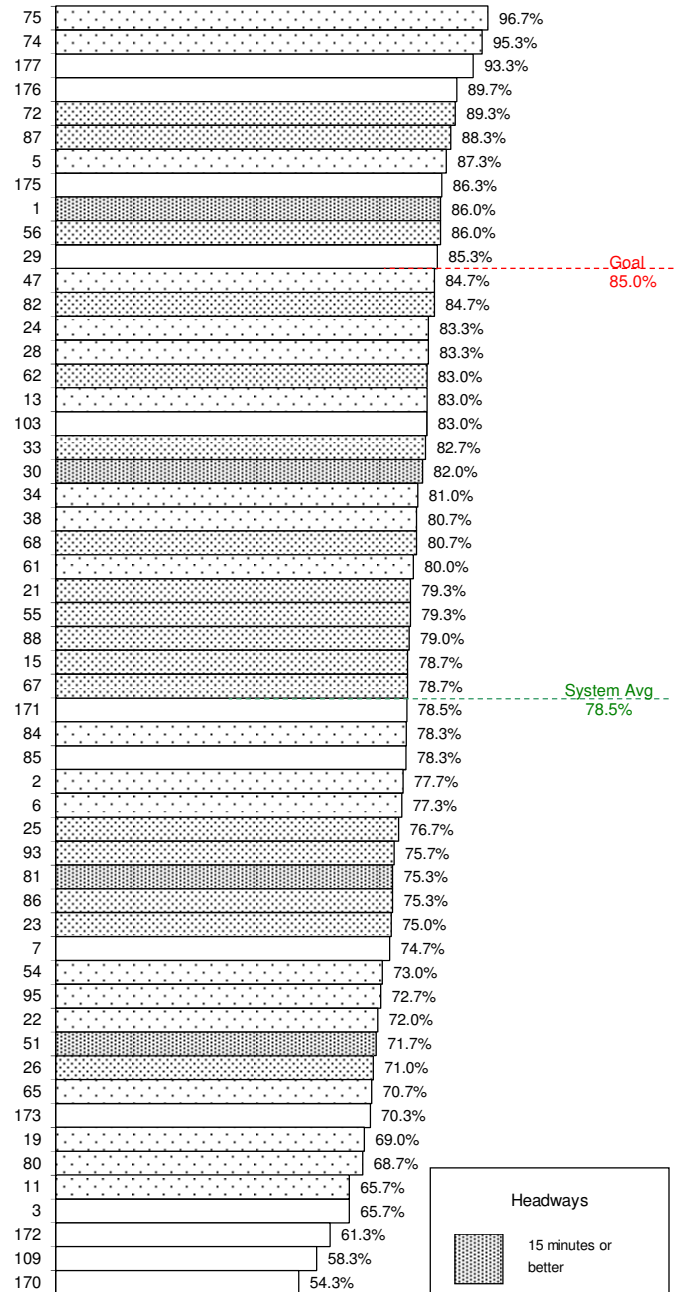


Weekday Bus and CBS Routes

On-time performance is measured at time points, which are major stops shown on the public schedule (usually 4-6 per route).

A bus is considered on-time if it leaves its time point within 0 to 4:59 minutes of its scheduled time. On-time performance indicates the percent of time points where the bus was on-time according to this definition.

SacRT's on-time performance goal for fixed-route buses is 85 percent, or better. The second quarter average for weekday on-time performance is 78.5 percent, an improvement from the first quarter results, which was 77.3 percent.

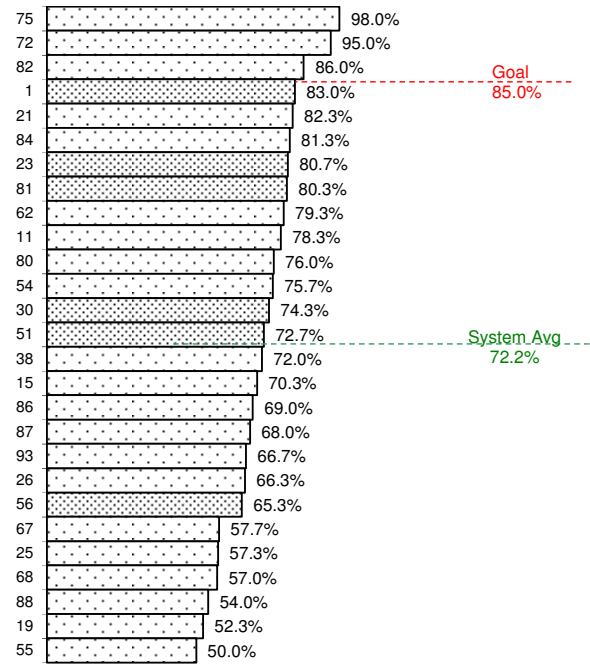
On-Time Performance


Saturday Bus Routes

On-time performance is measured at time points, which are major stops shown on the public schedule (usually 4-6 per route).

A bus is considered on-time if it leaves its time point within 0 to 4:59 minutes of its scheduled time. On-time performance indicates the percent of time points where the bus was on-time according to this definition.

SacRT's on-time performance goal for fixed-route buses is 85 percent, or better. The second quarter average for Saturday on-time performance is 72.2 percent, which is a slight increase from the first quarter average of 71.3 percent.

On-Time Performance


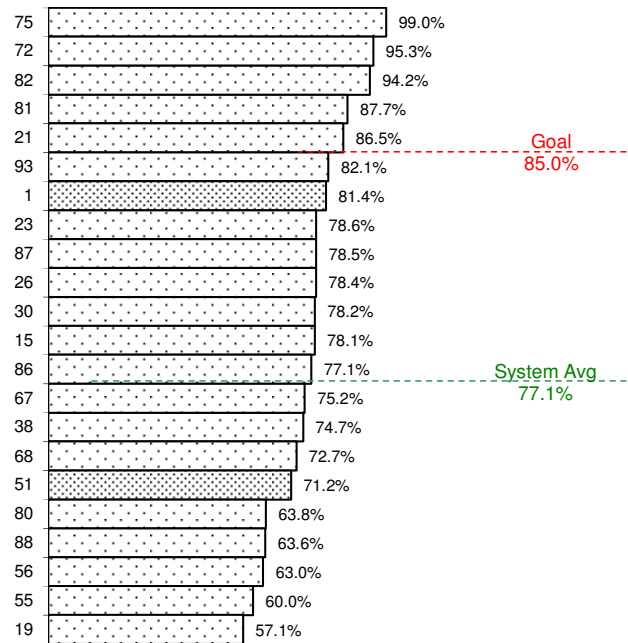
3/1/18 – 6/30/18

Sunday/Holiday Bus Routes

On-time performance is measured at time points, which are major stops along the route and shown on the public schedule (usually 4-6 per route).

A bus is considered on-time if it leaves its time point within 0 to 4:59 minutes of its scheduled time. On-time performance indicates the percent of time points where the bus was on-time according to this definition.

SacRT's on-time performance goal for fixed-route buses is 85 percent, or better. The second quarter average for Sunday on-time performance is 77.1 percent, which is an increase from the first quarter average of 74.8 percent.

On-Time Performance


4/1/18 – 6/30/18

Light Rail On-Time Departures

Light rail on-time performance is measured at the starting point of a trip. A one-way trip is considered on-time if it departs within 0 to 4:59 minutes of its scheduled starting time.

SacRT's on-time performance goal for light rail trains is 97 percent on-time departures. The second quarter average for the Blue and Gold lines decreased from the previous quarter, and the Green line average improved.

Calendar Year/Qtr	Blue	Gold	Green
2017-Q1	96.8%	97.8%	90.7%
2017-Q2	98.0%	98.4%	93.5%
2017-Q3	97.9%	98.3%	94.4%
2017-Q4	98.3%	97.9%	90.9%
2018-Q1	98.3%	98.7%	92.5%
2018-Q2	97.7%	98.6%	95.8%


Average Daily Ridership by Time Period

4/1/18 - 6/30/18



BLUE LINE - TOTAL	AM Peak (6:00 - 9:00a)		Midday (9:01a - 3:29p)		PM Peak (3:30 - 6:00p)		Other Weekday (<6:00a or >6:00p)		Total Weekday	
	On	Off	On	Off	On	Off	On	Off	On	Off
WATT / I-80	528	263	411	465	189	307	250	265	1,378	1,301
WATT I-80 WEST	117	4	25	35	2	80	23	11	167	130
ROSEVILLE RD	376	17	55	144	25	391	53	42	509	594
MARCONI / ARCADE	281	67	234	236	90	243	104	144	708	690
SWANSTON	110	33	60	87	24	88	35	47	230	256
ROYAL OAKS	84	52	140	150	61	91	82	67	368	361
ARDEN / DEL PASO	201	114	305	325	124	188	171	170	801	797
GLOBE AVENUE	88	33	91	92	41	90	32	48	252	263
ALKALI FLAT / LA VALEN	129	131	324	254	107	87	87	101	646	573
12TH & I STREETS	35	302	142	134	248	33	77	66	503	534
CATHEDRAL SQUARE	60	367	247	242	342	85	125	88	774	782
7TH / 9TH & K	81	181	215	176	165	62	81	44	541	463
7TH / 8TH & CAPITOL	106	540	373	271	463	97	178	130	1,120	1,037
8TH & O STREETS	62	478	202	131	425	41	62	53	751	704
ARCHIVES PLAZA	26	361	139	97	319	34	54	48	537	540
13TH STREET	61	166	207	266	159	99	134	78	561	610
16TH STREET	255	526	596	547	486	248	360	288	1,697	1,610
BROADWAY	156	166	265	272	180	148	131	141	732	727
4TH/WAYNE HULTGREN	98	209	248	115	82	105	71	56	500	486
CITY COLLEGE	121	300	384	423	197	103	173	72	874	898
FRUITRIDGE	142	47	136	171	81	112	81	105	440	435
47TH AVE	298	62	168	179	51	259	84	101	601	601
FLORIN	248	163	329	358	147	246	132	213	856	980
MEADOWVIEW	343	101	271	310	106	289	113	210	833	909
FRANKLIN	343	33	118	158	47	332	57	101	565	625
CENTER PKWY	55	65	79	61	60	58	31	68	225	252
CRC	553	176	344	400	182	475	187	208	1,265	1,259
	4,958	4,960	6,108	6,101	4,401	4,393	2,967	2,964	18,435	18,418

Average Daily Ridership by Time Period

4/1/18 - 6/30/18



GOLD LINE - TOTAL	AM Peak (6:00 - 9:00a)		Midday (9:01a - 3:29p)		PM Peak (3:30 - 6:00p)		Other Weekday (<6:00a or >6:00p)		Total Weekday	
	On	Off	On	Off	On	Off	On	Off	On	Off
SAC VALLEY	83	155	125	145	135	86	80	63	423	449
7TH & I	46	7	124	5	192	5	40	6	402	23
8TH & H	6	162	12	86	19	22	2	36	38	305
7TH & K	7	1	7	0	0	0	0	0	14	1
8TH & K	2	162	24	313	6	98	6	86	38	659
7TH / 8TH & CAPITOL	108	267	304	172	398	91	139	104	949	634
8TH & O STREETS	83	348	179	162	401	52	40	73	704	635
ARCHIVES PLAZA	68	403	170	138	350	53	49	36	637	629
13TH STREET	125	133	260	211	183	92	84	60	652	495
16TH STREET	309	474	631	660	414	341	283	260	1,637	1,736
23RD STREET	163	95	142	151	84	142	57	81	446	468
29TH STREET	252	347	634	642	253	200	154	125	1,292	1,315
39TH STREET	52	56	86	82	41	63	38	43	216	244
48TH STREET	49	53	69	71	49	57	29	31	196	211
59TH STREET	129	67	101	74	51	61	30	26	312	228
65TH STREET	337	261	534	564	230	325	229	198	1,331	1,348
POWER INN ROAD	122	104	190	163	99	116	63	85	474	468
COLLEGE GREENS	127	106	287	269	113	164	99	92	627	631
WATT / MANLOVE	382	125	310	299	114	412	135	125	941	961
STARFIRE	95	34	93	89	29	82	56	52	273	258
TIBER	87	53	86	78	45	122	43	39	261	292
BUTTERFIELD	139	162	178	127	165	123	72	107	554	519
MATHER FIELD / MILLS	379	152	496	458	170	409	174	220	1,218	1,240
ZINFANDEL	182	127	276	332	202	174	175	140	835	773
CORDOVA TOWN CTR	133	80	188	172	79	138	52	78	451	469
SUNRISE	224	107	185	156	123	253	112	117	645	633
HAZEL	54	45	42	34	38	40	11	19	145	137
IRON POINT	184	54	108	156	70	170	52	26	414	406
GLENN	126	55	36	43	40	89	32	24	234	211
HIST FOLSOM	207	64	97	122	48	159	61	44	413	389
	4,259	4,259	5,972	5,970	4,141	4,141	2,398	2,398	16,770	16,768


Average Daily Ridership by Time Period

4/1/18 - 6/30/18

GREEN LINE - TOTAL	AM Peak (6:00 - 9:00a)		Midday (9:01a - 3:29p)		PM Peak (3:30 - 6:00p)		Other Weekday (<6:00a or >6:00p)		Total Weekday	
	On	Off	On	Off	On	Off	On	Off	On	Off
RICHARDS BLVD	50	19	87	57	28	46	15	18	180	139
7TH & I	2	14	16	32	8	10	2	2	28	57
7TH & K	0	0	0	1	1	3	0	2	1	5
7TH / 8TH & CAPITOL	6	15	19	24	11	11	9	6	46	56
8TH & O STREETS	4	5	10	11	5	3	1	2	20	21
ARCHIVES PLAZA	4	9	9	6	7	2	2	3	22	20
13TH STREET	11	19	29	61	16	16	7	14	62	110
8TH & K	9	1	20	6	12	2	10	1	50	10
8TH & H	5	9	16	9	8	3	3	2	33	22
	90	90	206	206	96	96	48	49	440	441

**Quarterly Ridership Report
Period Ending June 30, 2018**

Average Weekday Ridership

Historical Trends by Station



BLUE LINE - TOTAL	Year Ended 6/30/12		Year Ended 6/30/13		Year Ended 6/30/2014		Year Ended 6/30/2015		Year Ended 6/30/2016		Year Ended 6/30/2017		Q2 (4/1/18-6/30/18)		Percent Change FY17 to Q2	
	On	Off	On	Off	On	Off	On	Off	On	Off	On	Off	On	Off	On	Off
WATT / I-80	2,164	2,108	2,157	2,088	2,020	2,130	1,871	1,859	1,884	1,748	1,682	1,324	1,378	1,301	-18%	-2%
WATT I-80 WEST	116	116	131	127	118	165	91	97	130	131	184	100	167	130	-9%	30%
ROSEVILLE RD	633	736	633	635	576	596	527	558	564	683	629	699	509	594	-19%	-15%
MARCONI / ARCADE	916	870	1,057	959	1,062	988	825	866	1,045	914	835	690	708	690	-15%	0%
SWANSTON	269	299	313	304	341	393	346	353	308	381	210	317	230	256	9%	-19%
ROYAL OAKS	515	417	588	539	602	535	633	612	599	592	563	449	368	361	-35%	-20%
ARDEN / DEL PASO	1,361	1,606	1,297	1,457	1,316	1,394	1,203	1,319	1,194	1,270	919	985	801	797	-13%	-19%
GLOBE AVENUE	296	301	297	288	304	304	356	357	316	298	330	282	252	263	-24%	-7%
ALKALI FLAT / LA VALENTINA	949	978	1,086	1,020	1,076	1,058	951	979	1,025	1,001	869	860	646	573	-26%	-33%
12TH & I STREETS	612	662	504	591	576	577	522	598	629	668	553	594	503	534	-9%	-10%
CATHEDRAL SQUARE	846	939	743	927	809	871	715	1,035	913	988	820	969	774	782	-6%	-19%
7TH / 9TH & K	2,022	1,887	1,921	1,890	1,943	1,825	1,381	1,042	1,466	1,128	716	558	541	463	-24%	-17%
7TH / 8TH & CAPITOL	673	629	611	637	588	593	809	705	766	830	1,292	1,356	1,120	1,037	-13%	-24%
8TH & O STREETS	763	679	675	693	693	707	737	651	843	769	774	737	751	704	-3%	-5%
ARCHIVES PLAZA	519	487	489	491	520	477	522	483	550	498	604	606	537	540	-11%	-11%
13TH STREET	429	416	508	472	494	478	664	518	641	619	558	641	561	610	1%	-5%
16TH STREET	2,213	2,396	2,008	2,225	1,984	2,148	1,731	1,774	2,104	2,177	1,865	1,835	1,697	1,610	-9%	-12%
BROADWAY	1,030	930	1,034	1,012	1,014	929	800	927	1,042	997	810	894	732	727	-10%	-19%
4TH/WAYNE HULTGREN	760	577	684	594	723	532	562	422	704	611	534	514	500	486	-6%	-6%
CITY COLLEGE	1,757	1,682	1,689	1,789	1,772	1,626	1,257	945	1,506	1,434	984	1,118	874	898	-11%	-20%
FRUITRIDGE	675	682	642	618	612	577	462	613	636	568	569	574	440	435	-23%	-24%
47TH AVE	717	728	763	682	720	733	623	729	615	773	655	709	601	601	-8%	-15%
FLORIN	1,508	1,723	1,606	1,631	1,590	1,783	1,340	1,602	1,322	1,493	1,112	1,263	856	980	-23%	-22%
MEADOWVIEW	2,813	2,706	2,774	2,542	2,460	2,493	2,057	1,940	1,267	1,367	1,113	1,149	833	909	-25%	-21%
FRANKLIN	-	-	-	-	-	-	-	-	550	627	642	612	565	625	-12%	2%
CENTER PKWY	-	-	-	-	-	-	-	-	337	327	346	308	225	252	-35%	-18%
CRC	-	-	-	-	-	-	-	-	1,234	1,292	1,365	1,389	1,265	1,259	-7%	-9%
	24,555	24,555	24,209	24,210	23,912	23,912	20,984	20,984	24,185	24,185	21,533	21,533	18,435	18,418	-14%	-14%

Average Weekday Ridership

Historical Trends by Station



GOLD LINE - TOTAL	Year Ended 6/30/12		Year Ended 6/30/13		Year Ended 6/30/2014		Year Ended 6/30/2015		Year Ended 6/30/2016		Year Ended 6/30/2017		Q2 (4/1/18-6/30/18)		Percent Change FY17 to Q2	
	On	Off	On	Off	On	Off	On	Off	On	Off	On	Off	On	Off	On	Off
SAC VALLEY	504	482	387	363	439	299	483	301	400	350	378	407	423	449	12%	10%
7TH & I	375	22	359	9	399	14	549	28	401	19	400	8	402	23	1%	199%
8TH & H	55	304	23	279	21	317	36	398	32	366	50	341	38	305	-24%	-10%
7TH & K	1,047	47	1,002	46	1,016	58	757	40	690	40	-	-	14	1	-	-
8TH & K	71	1,567	39	1,351	48	1,173	35	876	43	816	43	832	38	659	-11%	-21%
7TH / 8TH & CAPITOL	610	572	483	511	498	511	568	686	462	661	946	634	949	634	0%	0%
8TH & O STREETS	871	832	732	714	746	687	934	643	802	653	735	593	704	635	-4%	7%
ARCHIVES PLAZA	691	699	628	660	620	663	681	616	694	641	682	609	637	629	-7%	3%
13TH STREET	524	484	627	538	515	487	569	542	650	503	599	446	652	495	9%	11%
16TH STREET	2,437	2,367	2,146	2,317	1,982	2,148	1,997	1,918	2,061	2,048	1,720	1,869	1,637	1,736	-5%	-7%
23RD STREET	661	580	573	571	549	500	585	627	544	555	468	432	446	468	-5%	8%
29TH STREET	1,817	1,684	1,767	1,571	1,659	1,599	1,544	1,690	1,593	1,578	1,528	1,356	1,292	1,315	-15%	-3%
39TH STREET	353	307	396	321	350	295	276	281	301	298	255	233	216	244	-15%	5%
48TH STREET	204	227	206	231	216	211	250	215	208	238	179	235	196	211	9%	-10%
59TH STREET	303	245	308	287	254	259	279	305	245	262	229	308	312	228	36%	-26%
65TH STREET	1,670	1,762	1,678	1,708	1,634	1,728	1,612	1,814	1,645	1,658	1,365	1,332	1,331	1,348	-3%	1%
POWER INN ROAD	846	806	796	770	758	723	727	677	585	576	507	482	474	468	-7%	-3%
COLLEGE GREENS	823	779	795	736	808	773	892	854	825	796	628	652	627	631	0%	-3%
WATT / MANLOVE	1,214	1,330	1,256	1,333	1,179	1,265	1,097	1,314	1,120	1,203	1,018	917	941	961	-8%	5%
STARFIRE	511	388	480	416	443	375	545	290	353	382	267	308	273	258	2%	-16%
TIBER	372	383	358	390	371	390	392	357	347	367	288	248	261	292	-9%	18%
BUTTERFIELD	737	705	690	719	714	677	706	683	652	700	576	532	554	519	-4%	-2%
MATHER FIELD / MILLS	1,762	1,914	1,814	1,844	1,758	1,754	1,591	2,013	1,661	1,610	1,334	1,448	1,218	1,240	-9%	-14%
ZINFANDEL	942	921	1,040	1,010	1,064	1,119	1,155	1,211	1,021	1,053	767	765	835	773	9%	1%
CORDOVA TOWN CTR	684	698	661	602	638	618	702	588	614	553	545	466	451	469	-17%	1%
SUNRISE	840	909	883	862	823	803	687	748	762	684	660	647	645	633	-2%	-2%
HAZEL	215	239	209	192	186	179	169	204	172	206	158	177	145	137	-8%	-23%
IRON POINT	481	537	473	497	480	488	541	450	422	481	422	439	414	406	-2%	-7%
GLENN	289	294	284	247	241	261	183	219	248	228	204	223	234	211	15%	-5%
HIST FOLSOM	533	510	508	511	486	513	465	420	421	449	410	423	413	389	1%	-8%
	22,443	22,591	21,602	21,608	20,895	20,888	21,008	21,008	19,974	19,974	17,360	17,360	18,103	18,103	4%	4%


Average Weekday Ridership

Historical Trends by Station

GREEN LINE - TOTAL	Year Ended 6/30/13		Year Ended 6/30/14		Year Ended 6/30/2015		Year Ended 6/30/2016		Year Ended 6/30/2017		Q2 (4/1/18-6/30/18)		Percent Change FY17 to Q2	
	On	Off	On	Off	On	Off	On	Off	On	Off	On	Off	On	Off
RICHARDS BLVD	79	82	103	105	150	143	158	150	139	126	180	139	29%	10%
7TH & I	13	16	13	25	24	38	20	40	15	51	28	57	82%	12%
7TH & K	25	34	26	41	22	48	21	51	-	-	1	5	-	-
7TH / 8TH & CAPITOL	16	13	22	14	35	25	34	18	41	44	46	56	11%	28%
8TH & O STREETS	21	17	28	23	28	27	29	25	23	18	20	21	-13%	18%
ARCHIVES PLAZA	33	17	32	21	37	28	30	27	27	19	22	20	-19%	8%
13TH STREET	51	68	58	74	76	104	59	96	44	82	62	110	41%	35%
8TH & K	38	35	48	38	55	36	61	20	45	14	50	10	11%	-25%
8TH & H	19	15	22	12	38	16	33	18	39	20	33	22	-16%	9%
	297	297	352	352	464	464	444	444	373	373	404	403	8%	8%