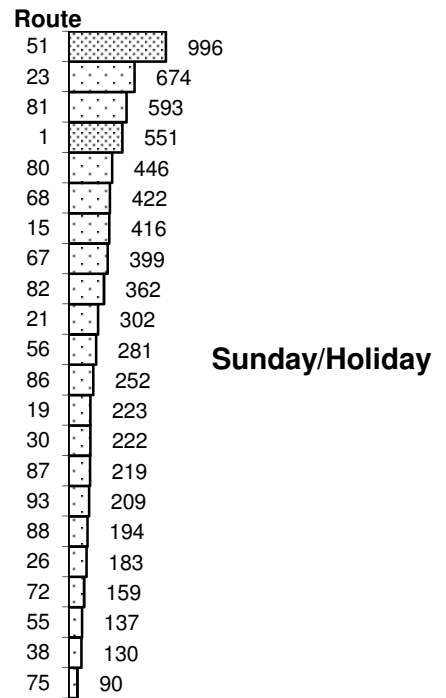
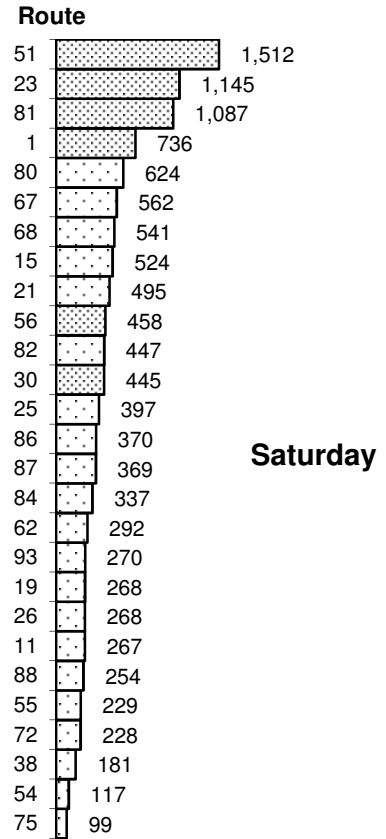
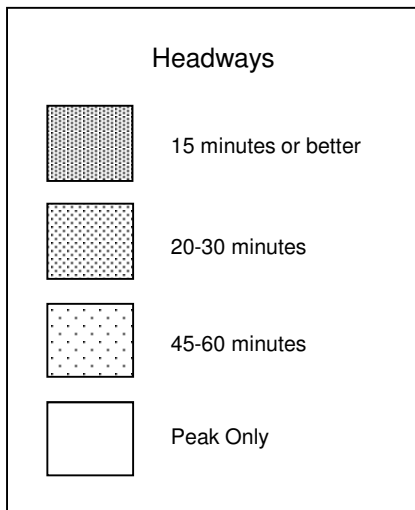
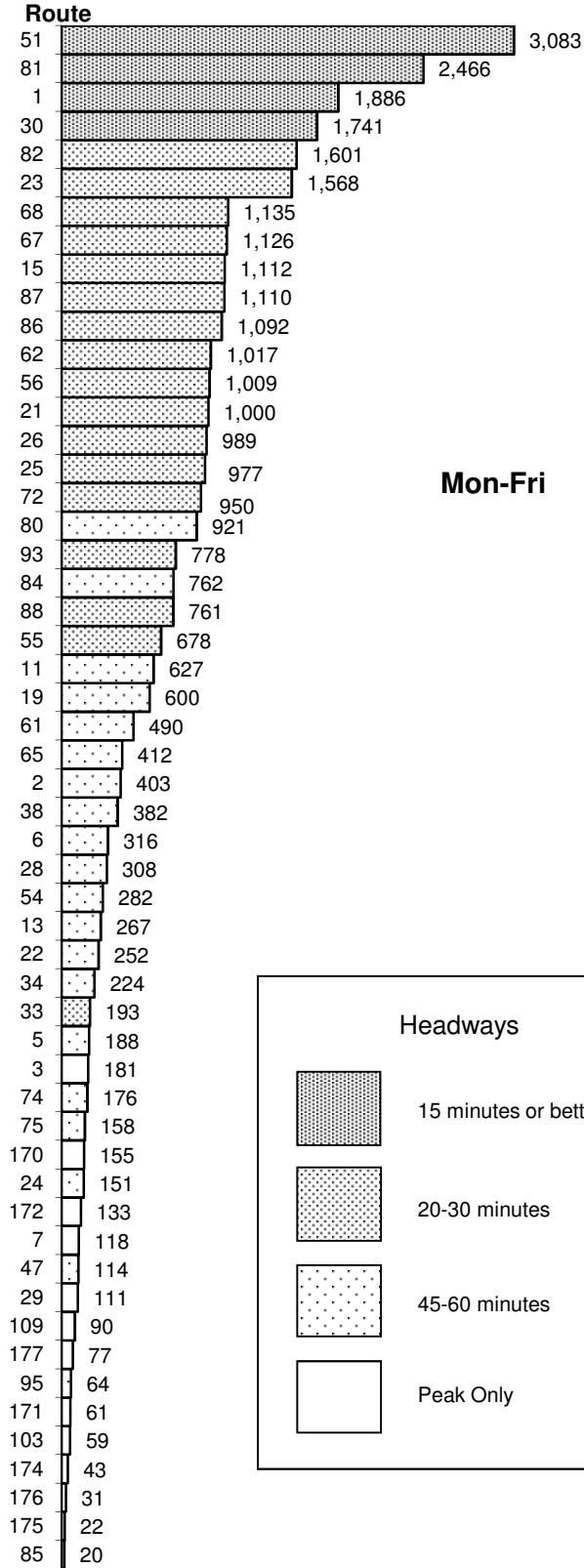

 **Regional Transit**
Quarterly Ridership Report
Period Ending December 31, 2018

Average Daily Boardings

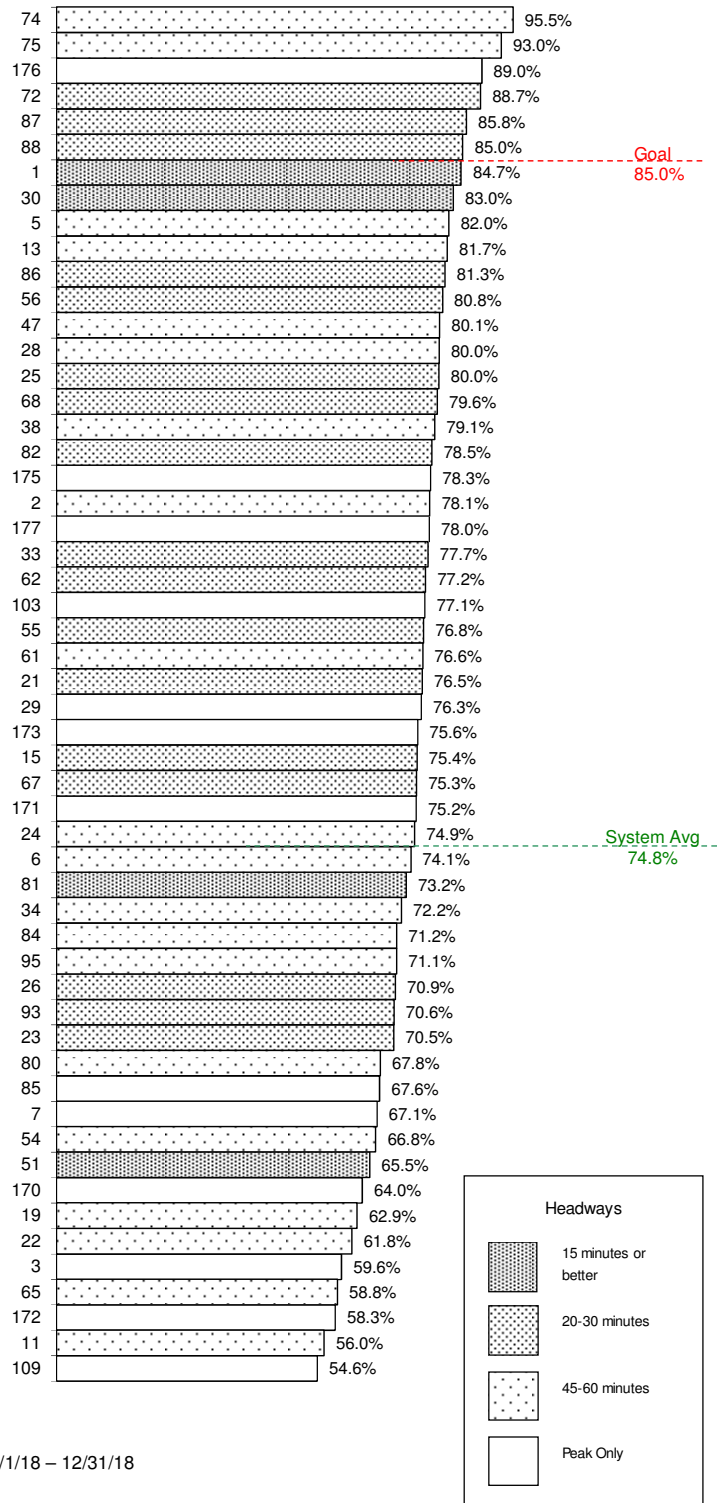


Weekday Bus and CBS Routes

On-time performance is measured at time points, which are major stops shown on the public schedule (usually 4-6 per route).

A bus is considered on-time if it leaves its time point within 0 to 4:59 minutes of its scheduled time. On-time performance indicates the percent of time points where the bus was on-time according to this definition.

SacRT's on-time performance goal for fixed-route buses is 85 percent, or better. The fourth quarter average for weekday on-time performance is 74.8 percent, a decrease from the third quarter results, which was 77.7 percent.

On-Time Performance


10/1/18 – 12/31/18

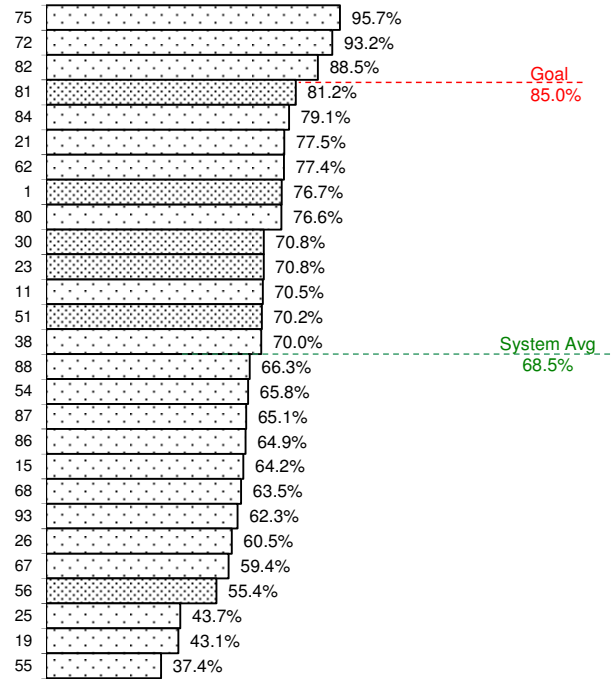
Quarterly Ridership Report
 Period Ending December 31, 2018

Saturday Bus Routes

On-time performance is measured at time points, which are major stops shown on the public schedule (usually 4-6 per route).

A bus is considered on-time if it leaves its time point within 0 to 4:59 minutes of its scheduled time. On-time performance indicates the percent of time points where the bus was on-time according to this definition.

SacRT's on-time performance goal for fixed-route buses is 85 percent, or better. The fourth quarter average for Saturday on-time performance is 68.5 percent, which is a decrease from the third quarter average of 73.1 percent.

On-Time Performance


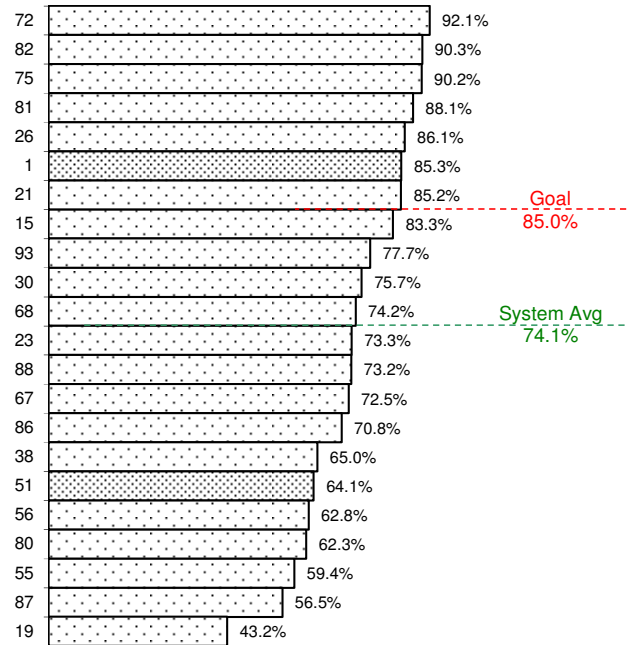
10/1/18 – 12/31/18

Sunday/Holiday Bus Routes

On-time performance is measured at time points, which are major stops along the route and shown on the public schedule (usually 4-6 per route).

A bus is considered on-time if it leaves its time point within 0 to 4:59 minutes of its scheduled time. On-time performance indicates the percent of time points where the bus was on-time according to this definition.

SacRT's on-time performance goal for fixed-route buses is 85 percent, or better. The fourth quarter average for Sunday on-time performance is 74.1 percent, which is a decrease from the third quarter average of 76.3 percent.

On-Time Performance


10/1/18 – 12/31/18

Light Rail On-Time Departures

Light rail on-time performance is measured at the starting point of a trip. A one-way trip is considered on-time if it departs within 0 to 4:59 minutes of its scheduled starting time.

SacRT's on-time performance goal for light rail trains is 97 percent on-time departures. The fourth quarter average for the Green line increased from the previous quarter, and the Blue line and Gold line averages decreased.

Calendar Year/Qtr	Blue	Gold	Green
2017-Q1	96.8%	97.8%	90.7%
2017-Q2	98.0%	98.4%	93.5%
2017-Q3	97.9%	98.3%	94.4%
2017-Q4	98.3%	97.9%	90.9%
2018-Q1	98.3%	98.7%	92.5%
2018-Q2	97.7%	98.6%	95.8%
2018-Q3	97.7%	97.8%	91.8%
2019-Q4	94.5%	94.8%	93.4%

Quarterly Ridership Report
 Period Ending December 31, 2018

Average Daily Ridership by Time Period

10/1/18 - 12/31/18



BLUE LINE - TOTAL	AM Peak (6:00 - 9:00a)		Midday (9:01a - 3:29p)		PM Peak (3:30 - 6:00p)		Other Weekday (<6:00a or >6:00p)		Total Weekday	
	On	Off	On	Off	On	Off	On	Off	On	Off
WATT / I-80	447	221	427	471	202	266	261	225	1,337	1,183
WATT I-80 WEST	93	1	10	43	6	90	21	11	130	145
ROSEVILLE RD	450	17	57	177	35	372	58	54	600	620
MARCONI / ARCADE	310	88	268	246	87	258	87	108	753	700
SWANSTON	142	32	66	72	28	118	38	35	273	257
ROYAL OAKS	69	79	142	133	47	64	90	76	348	353
ARDEN / DEL PASO	236	121	325	339	134	205	141	146	835	811
GLOBE AVENUE	116	23	87	82	34	81	37	54	274	241
ALKALI FLAT / LA VALENT	133	132	337	293	97	89	51	103	618	617
12TH & I STREETS	44	338	156	133	210	43	41	45	450	559
CATHEDRAL SQUARE	65	398	252	255	267	81	101	81	685	815
7TH / 9TH & K	87	155	240	185	176	89	112	49	615	478
7TH / 8TH & CAPITOL	124	606	393	303	454	144	156	140	1,128	1,192
8TH & O STREETS	64	516	250	135	402	36	39	49	754	736
ARCHIVES PLAZA	22	364	137	78	302	19	26	35	487	495
13TH STREET	49	159	187	239	155	79	91	37	483	514
16TH STREET	253	579	564	665	525	199	281	218	1,624	1,661
BROADWAY	108	152	279	255	177	153	115	96	678	655
4TH/WAYNE HULTGREN	60	221	285	127	117	98	45	36	508	481
CITY COLLEGE	117	346	476	450	218	133	164	62	975	990
FRUITRIDGE	134	50	151	187	68	111	52	86	404	433
47TH AVE	304	55	152	216	63	248	73	98	592	617
FLORIN	276	157	369	369	148	227	120	161	913	914
MEADOWVIEW	393	85	289	349	113	327	96	199	892	960
FRANKLIN	397	22	127	169	43	320	50	74	617	585
CENTER PKWY	90	54	92	63	44	68	29	45	254	231
CRC	624	237	391	475	219	454	174	228	1,408	1,393
	5,207	5,207	6,509	6,509	4,371	4,371	2,550	2,550	18,637	18,637

Average Daily Ridership by Time Period

10/1/18 - 12/31/18



GOLD LINE - TOTAL	AM Peak (6:00 - 9:00a)		Midday (9:01a - 3:29p)		PM Peak (3:30 - 6:00p)		Other Weekday (<6:00a or >6:00p)		Total Weekday	
	On	Off	On	Off	On	Off	On	Off	On	Off
SAC VALLEY	85	73	106	123	132	91	57	67	379	353
7TH & I	31	3	120	7	189	6	24	2	364	16
8TH & H	1	190	14	92	15	27	8	32	38	341
7TH & K	0	0	0	0	0	0	0	0	0	0
8TH & K	3	245	19	291	9	205	0	49	31	791
7TH / 8TH & CAPITOL	101	337	301	178	439	83	125	125	966	723
8TH & O STREETS	81	338	175	132	408	30	46	56	710	556
ARCHIVES PLAZA	64	360	191	149	333	30	45	38	632	576
13TH STREET	96	150	271	202	167	85	64	33	599	470
16TH STREET	320	513	663	699	440	360	231	236	1,654	1,810
23RD STREET	169	86	136	149	93	134	45	53	443	422
29TH STREET	279	336	658	613	277	221	128	145	1,343	1,315
39TH STREET	141	54	96	102	39	68	22	34	297	257
48TH STREET	67	47	59	66	44	32	28	36	197	182
59TH STREET	106	65	123	126	55	83	41	15	325	288
65TH STREET	292	436	598	611	288	300	230	134	1,408	1,481
POWER INN ROAD	112	92	202	162	108	109	65	46	487	408
COLLEGE GREENS	128	122	270	291	94	123	77	66	569	602
WATT / MANLOVE	430	129	319	310	142	436	149	154	1,041	1,028
STARFIRE	101	21	98	88	21	93	33	64	254	266
TIBER	76	49	91	88	27	88	30	29	225	254
BUTTERFIELD	134	159	191	114	153	109	51	85	529	467
MATHER FIELD / MILLS	434	199	468	471	225	417	170	218	1,296	1,306
ZINFANDEL	159	116	302	321	159	233	120	124	740	794
CORDOVA TOWN CTR	144	60	151	148	67	128	75	49	437	385
SUNRISE	282	124	171	176	138	269	102	87	692	657
HAZEL	62	34	32	26	48	55	26	34	167	149
IRON POINT	200	63	93	130	63	183	72	43	428	419
GLENN	137	43	32	52	38	104	39	36	246	235
HIST FOLSOM	264	55	100	131	73	182	56	70	492	439
	4,498	4,498	6,047	6,047	4,285	4,285	2,158	2,158	16,988	16,988

Quarterly Ridership Report
 Period Ending December 31, 2018

Average Daily Ridership by Time Period

10/1/18 - 12/31/18



GREEN LINE - TOTAL	AM Peak (6:00 - 9:00a)		Midday (9:01a - 3:29p)		PM Peak (3:30 - 6:00p)		Other Weekday (<6:00a or >6:00p)		Total Weekday	
	On	Off	On	Off	On	Off	On	Off	On	Off
RICHARDS BLVD	52	23	73	58	21	41	8	20	154	142
7TH & I	2	15	8	24	7	7	2	3	18	49
7TH & K	0	0	0	0	0	0	0	0	0	0
7TH / 8TH & CAPITOL	9	14	19	23	9	8	7	2	44	46
8TH & O STREETS	2	8	9	9	6	4	2	1	19	21
ARCHIVES PLAZA	2	9	8	5	7	2	4	1	20	16
13TH STREET	14	20	25	47	9	15	5	12	53	94
8TH & K	8	0	20	7	10	2	9	1	47	10
8TH & H	7	8	15	5	12	2	6	2	40	17
	96	96	177	177	81	81	42	42	396	396

Quarterly Ridership Report
 Period Ending December 31, 2018


Average Weekday Ridership

Historical Trends by Station

BLUE LINE - TOTAL	Year Ended 6/30/12		Year Ended 6/30/13		Year Ended 6/30/2014		Year Ended 6/30/2015		Year Ended 6/30/2016		Year Ended 6/30/2017		Year Ended 6/30/2018		Q4 (10/1/18-12/31/18)		Percent Change FY18 to Q4	
	On	Off	On	Off	On	Off	On	Off	On	Off	On	Off	On	Off	On	Off	On	Off
	WATT / I-80	2,164	2,108	2,157	2,088	2,020	2,130	1,871	1,859	1,884	1,748	1,682	1,324	1,378	1,301	1,337	1,183	-3%
WATT I-80 WEST ROSEVILLE RD	116	116	131	127	118	165	91	97	130	131	184	100	167	130	130	145	-22%	11%
MARCONI / ARCADE	916	870	1,057	959	1,062	988	825	866	1,045	914	835	690	708	690	753	700	6%	1%
SWANSON	269	299	313	304	341	393	346	353	308	381	210	317	230	256	273	257	19%	1%
ROYAL OAKS	515	417	588	539	602	535	633	612	599	592	563	449	368	361	348	353	-6%	-2%
ARDEN / DEL PASO	1,361	1,606	1,297	1,457	1,316	1,394	1,203	1,319	1,194	1,270	919	985	801	797	835	811	4%	2%
GLOBE AVENUE	296	301	297	288	304	304	356	357	316	298	330	282	252	263	274	241	9%	-8%
ALKALI FLAT / LA VALENTINA	949	978	1,086	1,020	1,076	1,058	951	979	1,025	1,001	869	860	646	573	618	617	-4%	8%
12TH & I STREETS	612	662	504	591	576	577	522	598	629	668	553	594	503	534	450	559	-10%	5%
CATHEDRAL SQUARE	846	939	743	927	809	871	715	1,035	913	988	820	969	774	782	685	815	-12%	4%
7TH / 9TH & K	2,022	1,887	1,921	1,890	1,943	1,825	1,381	1,042	1,466	1,128	716	558	541	463	615	478	14%	3%
7TH / 8TH & CAPITOL	673	629	611	637	588	593	809	705	766	830	1,292	1,356	1,120	1,037	1,128	1,192	1%	15%
8TH & O STREETS	763	679	675	693	693	707	737	651	843	769	774	737	751	704	754	736	0%	5%
ARCHIVES PLAZA	519	487	489	491	520	477	522	483	550	498	604	606	537	540	487	495	-9%	-8%
13TH STREET	429	416	508	472	494	478	664	518	641	619	558	641	561	610	483	514	-14%	-16%
16TH STREET	2,213	2,396	2,008	2,225	1,984	2,148	1,731	1,774	2,104	2,177	1,865	1,835	1,697	1,610	1,624	1,661	-4%	3%
BROADWAY	1,030	930	1,034	1,012	1,014	929	800	927	1,042	997	810	894	732	727	678	655	-7%	-10%
4TH/WAYNE HULTGREN	760	577	684	594	723	532	562	422	704	611	534	514	500	486	508	481	2%	-1%
CITY COLLEGE	1,757	1,682	1,689	1,789	1,772	1,626	1,257	945	1,506	1,434	984	1,118	874	898	975	990	11%	10%
FRUITRIDGE	675	682	642	618	612	577	462	613	636	568	569	574	440	435	404	433	-8%	0%
47TH AVE	717	728	763	682	720	733	623	729	615	773	655	709	601	601	592	617	-1%	3%
FLORIN	1,508	1,723	1,606	1,631	1,590	1,783	1,340	1,602	1,322	1,493	1,112	1,263	856	980	913	914	7%	-7%
MEADOWVIEW	2,813	2,706	2,774	2,542	2,460	2,493	2,057	1,940	1,267	1,367	1,113	1,149	833	909	892	960	7%	6%
FRANKLIN	-	-	-	-	-	-	-	-	550	627	642	612	565	625	617	585	9%	-7%
CENTER PKWY	-	-	-	-	-	-	-	-	337	327	346	308	225	252	254	231	13%	-9%
CRC	-	-	-	-	-	-	-	-	1,234	1,292	1,365	1,389	1,265	1,259	1,408	1,393	11%	11%
	24,555	24,555	24,209	24,210	23,912	23,912	20,984	20,984	24,185	24,185	21,533	21,533	18,435	18,418	18,637	18,637	1%	1%

Average Weekday Ridership

Historical Trends by Station

GOLD LINE - TOTAL	Year Ended 6/30/12		Year Ended 6/30/13		Year Ended 6/30/2014		Year Ended 6/30/2015		Year Ended 6/30/2016		Year Ended 6/30/2017		Year Ended 6/30/2018		Q4 (10/1/18-12/31/18)		Percent Change FY18 to Q4	
	On	Off	On	Off	On	Off	On	Off	On	Off	On	Off	On	Off	On	Off	On	Off
	SAC VALLEY	504	482	387	363	439	299	483	301	400	350	378	407	423	449	379	353	-11%
7TH & I	375	22	359	9	399	14	549	28	401	19	400	8	402	23	364	16	-9%	-29%
8TH & H	55	304	23	279	21	317	36	398	32	366	50	341	38	305	38	341	-1%	12%
7TH & K	1,047	47	1,002	46	1,016	58	757	40	690	40	-	-	-	-	-	-	-	-
8TH & K	71	1,567	39	1,351	48	1,173	35	876	43	816	43	832	38	659	31	791	-18%	20%
7TH / 8TH & CAPITOL	610	572	483	511	498	511	568	686	462	661	946	634	949	634	966	723	2%	14%
8TH & O STREETS	871	832	732	714	746	687	934	643	802	653	735	593	704	635	710	556	1%	-12%
ARCHIVES PLAZA	691	699	628	660	620	663	681	616	694	641	682	609	637	629	632	576	-1%	-8%
13TH STREET	524	484	627	538	515	487	569	542	650	503	599	446	652	495	599	470	-8%	-5%
16TH STREET	2,437	2,367	2,146	2,317	1,982	2,148	1,997	1,918	2,061	2,048	1,720	1,869	1,637	1,736	1,654	1,810	1%	4%
23RD STREET	661	580	573	571	549	500	585	627	544	555	468	432	466	468	443	422	-1%	-10%
29TH STREET	1,817	1,684	1,767	1,571	1,659	1,599	1,544	1,690	1,593	1,578	1,528	1,356	1,292	1,315	1,343	1,315	4%	0%
39TH STREET	353	307	396	321	350	295	276	281	301	298	255	233	216	244	297	257	38%	5%
48TH STREET	204	227	206	231	216	211	250	215	208	238	179	235	196	211	197	182	1%	-14%
59TH STREET	303	245	308	287	254	259	279	305	245	262	229	308	312	228	325	288	4%	27%
65TH STREET	1,670	1,762	1,678	1,708	1,634	1,728	1,612	1,814	1,645	1,658	1,365	1,332	1,331	1,348	1,408	1,481	6%	10%
POWER INN ROAD	846	806	796	770	758	723	727	677	585	576	507	482	474	468	487	408	3%	-13%
COLLEGE GREENS	823	779	795	736	808	773	892	854	825	796	628	652	627	631	569	602	-9%	-5%
WATT / MANLOVE	1,214	1,330	1,256	1,333	1,179	1,265	1,097	1,314	1,120	1,203	1,018	917	941	961	1,041	1,028	11%	7%
STARFIRE	511	388	480	416	443	375	545	290	353	382	267	308	273	258	254	266	-7%	3%
TIBER	372	383	358	390	371	390	392	357	347	367	288	248	261	292	225	254	-14%	-13%
BUTTERFIELD	737	705	690	719	714	677	706	683	652	700	576	532	554	519	529	467	-5%	-10%
MATHER FIELD / MILLS	1,762	1,914	1,814	1,844	1,758	1,754	1,591	2,013	1,661	1,610	1,334	1,448	1,218	1,240	1,296	1,306	6%	5%
ZINFANDEL	942	921	1,040	1,010	1,064	1,119	1,155	1,211	1,021	1,053	767	765	835	773	740	794	-11%	3%
CORDOVA TOWN CTR	684	698	661	602	638	618	702	588	614	553	545	466	451	469	437	385	-3%	-18%
SUNRISE	840	909	883	862	823	803	687	748	762	684	660	647	645	633	692	657	7%	4%
HAZEL	215	239	209	192	186	179	169	204	172	206	158	177	145	137	167	149	15%	8%
IRON POINT	481	537	473	497	480	488	541	450	422	481	422	439	414	406	428	419	3%	3%
GLENN	289	294	284	247	241	261	183	219	248	228	204	223	234	211	246	235	5%	11%
HIST FOLSOM	533	510	508	511	486	513	465	420	421	449	410	423	413	389	492	439	19%	13%
	22,443	22,591	21,602	21,608	20,895	20,888	21,008	21,008	19,974	19,974	17,360	17,360	16,756	16,767	16,988	16,988	1%	1%

Average Weekday Ridership

Historical Trends by Station

GREEN LINE - TOTAL	Year Ended 6/30/13		Year Ended 6/30/14		Year Ended 6/30/2015		Year Ended 6/30/2016		Year Ended 6/30/2017		Year Ended 6/30/2018		Q4 (10/1/18-12/31/18)		Percent Change FY18 to Q4			
	On	Off	On	Off	On	Off	On	Off	On	Off	On	Off	On	Off	On	Off		
	RICHARDS BLVD	79	82	103	105	150	143	158	150	139	126	180	139	154	142	-14%	2%	
7TH & I	13	16	13	25	24	38	20	40	15	51	28	57	18	49	-34%	-14%		
7TH & K	25	34	26	41	22	48	21	51	-	-	-	-	-	-	-	-	-	-
7TH / 8TH & CAPITOL	16	13	22	14	35	25	34	18	41	44	46	56	44	46	-4%	-17%		
8TH & O STREETS	21	17	28	23	28	27	29	25	23	18	19	21	19	21	2%	1%		
ARCHIVES PLAZA	33	17	32	21	37	28	30	27	27	19	21	20	20	16	-5%	-19%		
13TH STREET	51	68	58	74	76	104	59	96	44	82	61	110	53	94	-13%	-15%		
8TH & K	38	35	48	38	55	36	61	20	45	14	50	10	47	10	-5%	-1%		
8TH & H	19	15	22	12	38	16	33	18	39	20	33	22	40	17	23%	-23%		
	297	297	352	352	464	464	444	444	373	373	436	436	396	396	-9%	-9%		