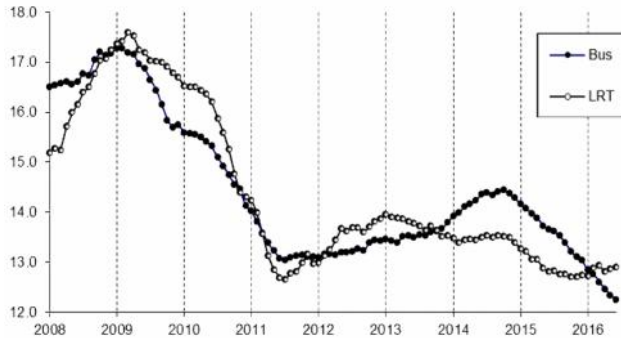



Regional Transit
Quarterly Ridership Report
Period Ending June 30, 2016

**Quarterly Ridership Report
Period Ending June 30, 2016**
System wide Trends

For Fiscal Year 2016, total system ridership was 25.2 million, down 1.3 million or 5 percent from last year's total of 26.5 million and down 9 percent from RT's budget goal of 27.7 million.

Annual Boardings
12-Month Rolling Average
(millions)

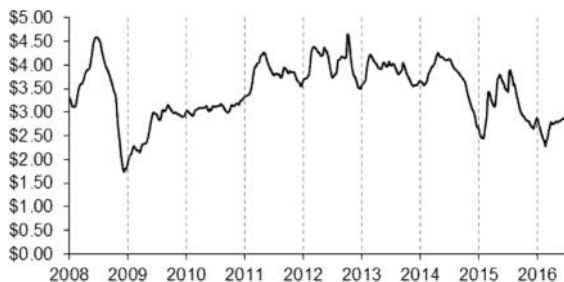


Weekday bus ridership has been declining since the beginning of FY 2015, after a brief trend of increased ridership during FY 2014. Overall bus ridership finished the year at 12.3 million boardings, down 10 percent from the previous year. Light rail kept on pace with previous year, ultimately finishing the year at 12.9 million, which was up 0.8 percent from previous year. The decline in bus ridership is likely a combination of several factors, including high numbers of trip cancellations and consistently low gas prices.

Gas Prices

Gas prices began to drop significantly in FY 2015, and continued throughout FY 2016. The average per-gallon price for regular unleaded in California was \$2.93 for FY 2016. This was down \$0.46 (-13.5 percent) from \$3.39 for FY 2015. It is very likely that the declining cost for gas negatively impacted ridership in FY 2016.

California Gas Prices
Per Gallon of Regular Unleaded



Source: U.S. Energy Information Administration

Employment Trends

Employment was stagnant in Sacramento County in FY 2016, finishing the year at 652,400 jobs, up 3,400 (+0.5 percent) from last year's total of 649,000. Ridership levels have not followed this trend in jobs, possibly because growth in employment over the last couple of years may have been among jobs not located in areas served well by transit or in jobs with alternative schedules, such as during nights and weekends when transit service is more limited or not available.

Total Employment
Sacramento County
(thousands)

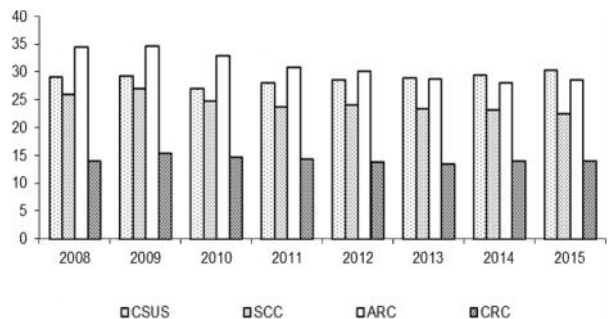


Source: California Employment Development Department

College Enrollment

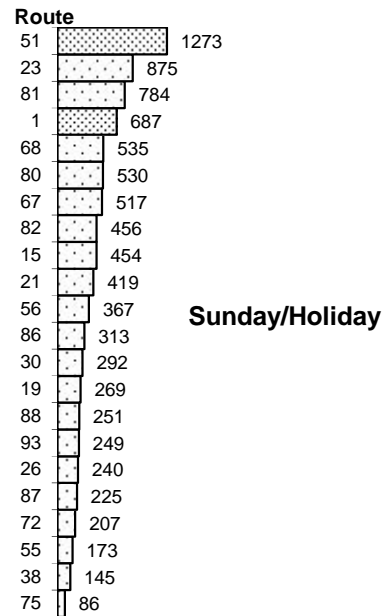
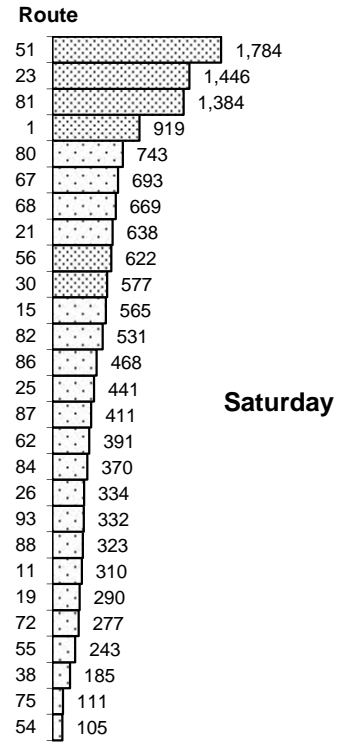
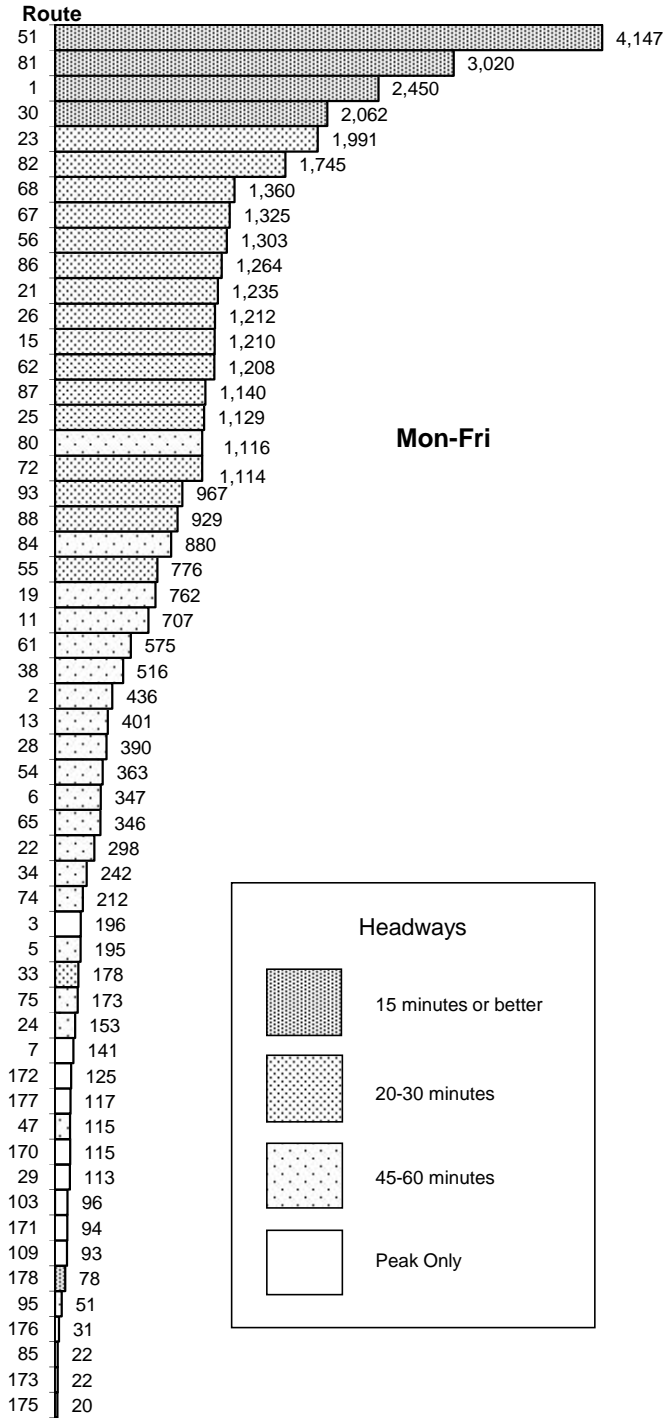
Enrollment at major area colleges increased compared to previous year by 766 (0.8 percent) from 94,587 to 95,353. CSUS enrollment increased, SCC and CRC enrollment decreased, and ARC remained nearly the same as previous year. While enrollment increased during the previous fiscal year, enrollment is down compared to 2010 by 3,737 (3.8 percent) from 99,090 to 95,353.

Fall Enrollment
(thousands)



Source: California State University Sacramento,
Los Rios Community College District

RT Bus Routes
Average Daily Boardings



Performance Monitoring
Monday-Friday

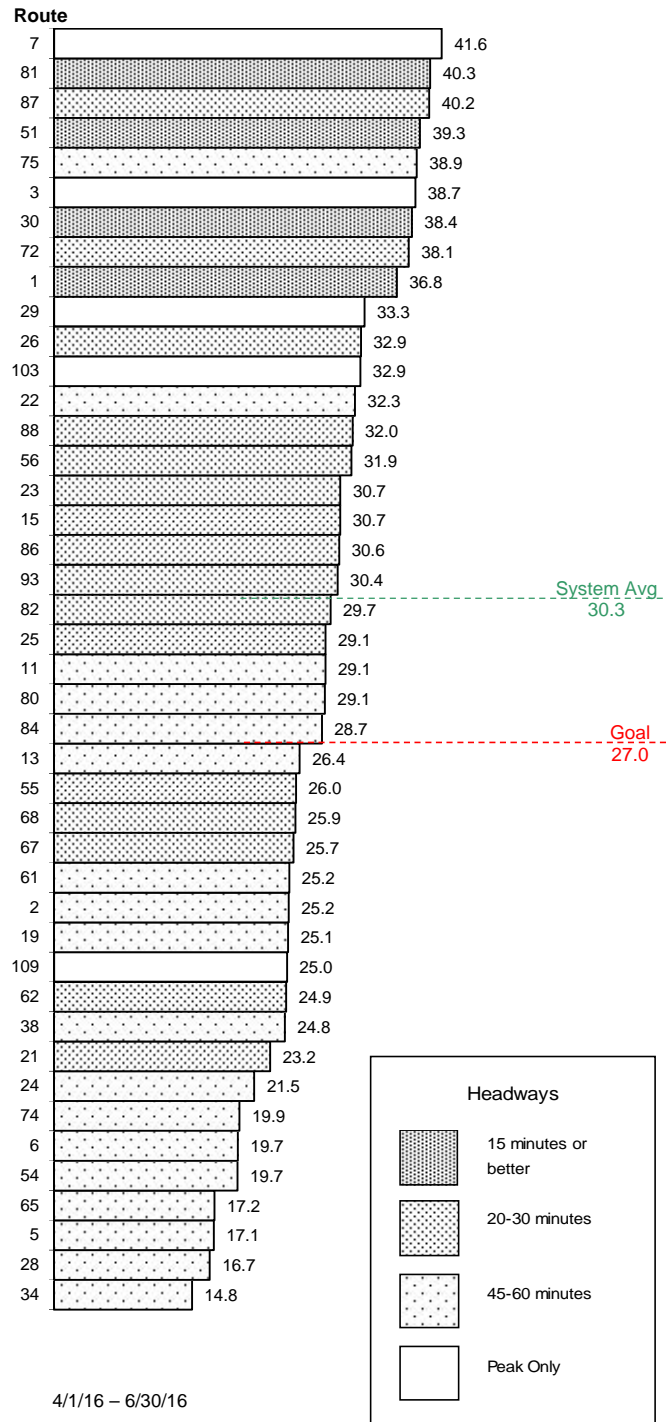
Minimum productivity standards for regular weekday bus routes are **27.0 boardings per service hour**. Low-productivity routes are reviewed by staff for possible corrective action. Newly created routes that do not meet minimum productivity standards within two years are subject to automatic elimination pursuant to RT's route sunset process.

Routes Below Standard

Route	Name	Quarters
2	Riverside	4 qtrs.
5	Meadowview/Valley Hi	6 qtrs.
6	Land Park	16 qtrs.
21	Sunrise	4 qtrs.
24	Madison-Greenback	4 qtrs.
28	Fair Oaks/Butterfield	16 qtrs.
34	McKinley	16 qtrs.
38	P/Q Streets	13 qtrs.
54	Center Parkway	5 qtrs.
65	Franklin-Univ/65th	3 qtr.
74	International	16 qtrs.
109	Hazel Express	4 qtrs.
62	Freeport	2 qtr.
13	Northgate	2 qtr.
67	Franklin	2 qtr.
61	Fruitridge	2 qtr.
68	44 th Street	2 qtr.
19	Rio Linda	1 qtr.
55	Scottsdale	1 qtr.

Notes:

- Note that productivity standards alone do not determine which routes are considered for modification. Consideration of corrective action is based on multiple factors, of which productivity is one.
- Routes 6, 34, 38 and 74 have been consistently below productivity standards.
- An upcoming route optimization effort is planned for the near future in order to reach system wide improvement goals.

Boardings Per Service Hour


Performance Monitoring
Saturday

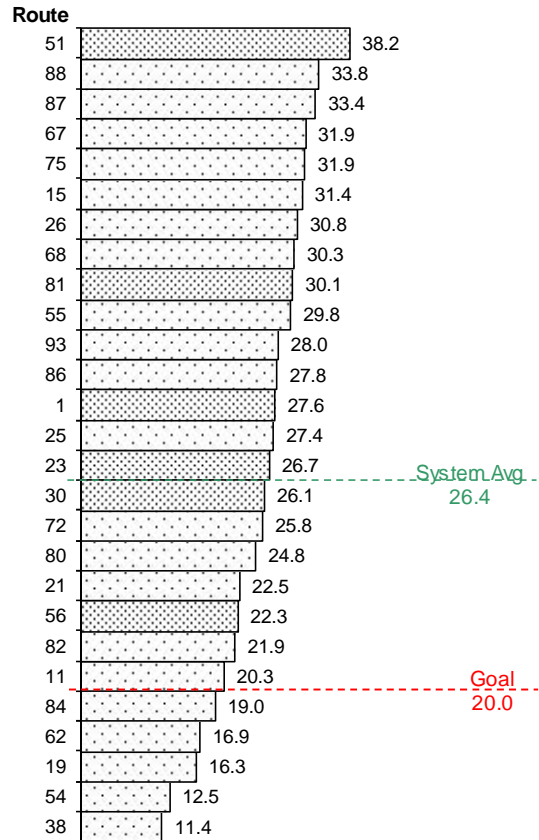
Minimum productivity standards for Saturday bus routes are **20.0 boardings per service hour**. Low-productivity routes are reviewed by staff for possible corrective action. Newly created routes that do not meet minimum productivity standards within two years are subject to automatic elimination pursuant to RT's route sunset process.

Routes Below Standard

Route	Name	Quarters
38	P/Q Streets	16 qtrs.
54	Center Parkway	6 qtrs.
62	Freeport	16 qtrs.
11	Truxel Road	1 qtr.
84	Rio Linda	1 qtr.

Notes:

- Routes 38 and 62 have been consistently below productivity standards.
- An upcoming route optimization effort is planned for the near future in order to reach system wide improvement goals.

Boardings Per Service Hour


4/1/16 – 6/30/16

Performance Monitoring
Sunday/Holiday

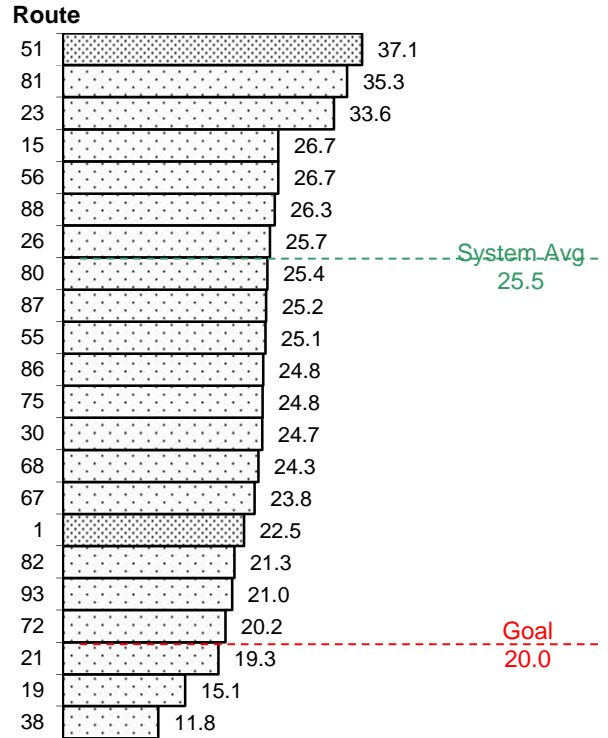
Minimum productivity standards for Sunday/Holiday bus routes are **20.0 boardings per service hour**. Low-productivity routes are reviewed by staff for possible corrective action. Newly created routes that do not meet minimum productivity standards within two years are subject to automatic elimination pursuant to RT's route sunset process.

Routes Below Standard

Route	Name	Quarters
19	Rio Linda	9 qtrs.
21	Sunrise	4 qtrs.
38	P/Q Streets	16 qtrs.

Notes:

- Route 38 has been consistently below productivity standards.
- An upcoming route optimization effort is planned for the near future in order to reach system wide improvement goals.

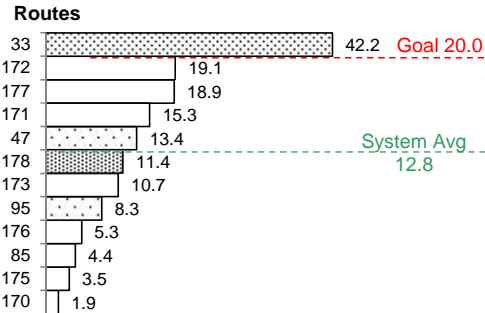
Boardings Per Service Hour


4/1/16 – 6/30/16

Performance Monitoring
Community Bus Service

Minimum productivity standards for CBS routes are **20.0 boardings per service hour**. CBS routes supported by a third-party subsidy are considered to be meeting standards if the net operating cost does not exceed **\$10.50 per passenger**. Low-productivity routes are reviewed by staff for possible corrective action. Newly created routes that do not meet minimum productivity standards within two years are subject to automatic elimination pursuant to RT's route sunset process.

Route	Name	Contract	Quarters
47	Phoenix Park	No	9 qtrs.
85	McClellan Shuttle	Yes	16 qtrs.
95	Citrus Hts. - Antelope Rd	No	15 qtrs.
170	Natomas Flyer Eastside	Yes	10 qtrs.
171	Natomas Flyer Westside	Yes	8 qtrs.
173	Natomas Flyer Square	Yes	9 qtrs.
176	Cordova - Anatolia Kavala	Yes	16 qtrs.
178	Granite Shuttle	Yes	16 qtrs.
172	Natomas Flyer Central	Yes	1 qtr.
177	Cordova - Anatolia Villages	Yes	1 qtr.
175	Cordova - Sunridge	Yes	1 qtr.

Boardings Per Revenue Hour


4/1/16 – 6/30/16

Notes:

- Routes 85, 170-173, and 176-178 are operated according to agreements with outside parties.
- Based on level-of-service commitments to the City of Citrus Heights and lack of superior cost-constrained alternatives, Route 95 was exempted from the sunset process in December 2014. Minor changes to Route 95 were implemented in April 2015.
- An upcoming route optimization effort is planned for the near future in order to reach system wide improvement goals.

Weekday Bus and CBS Routes

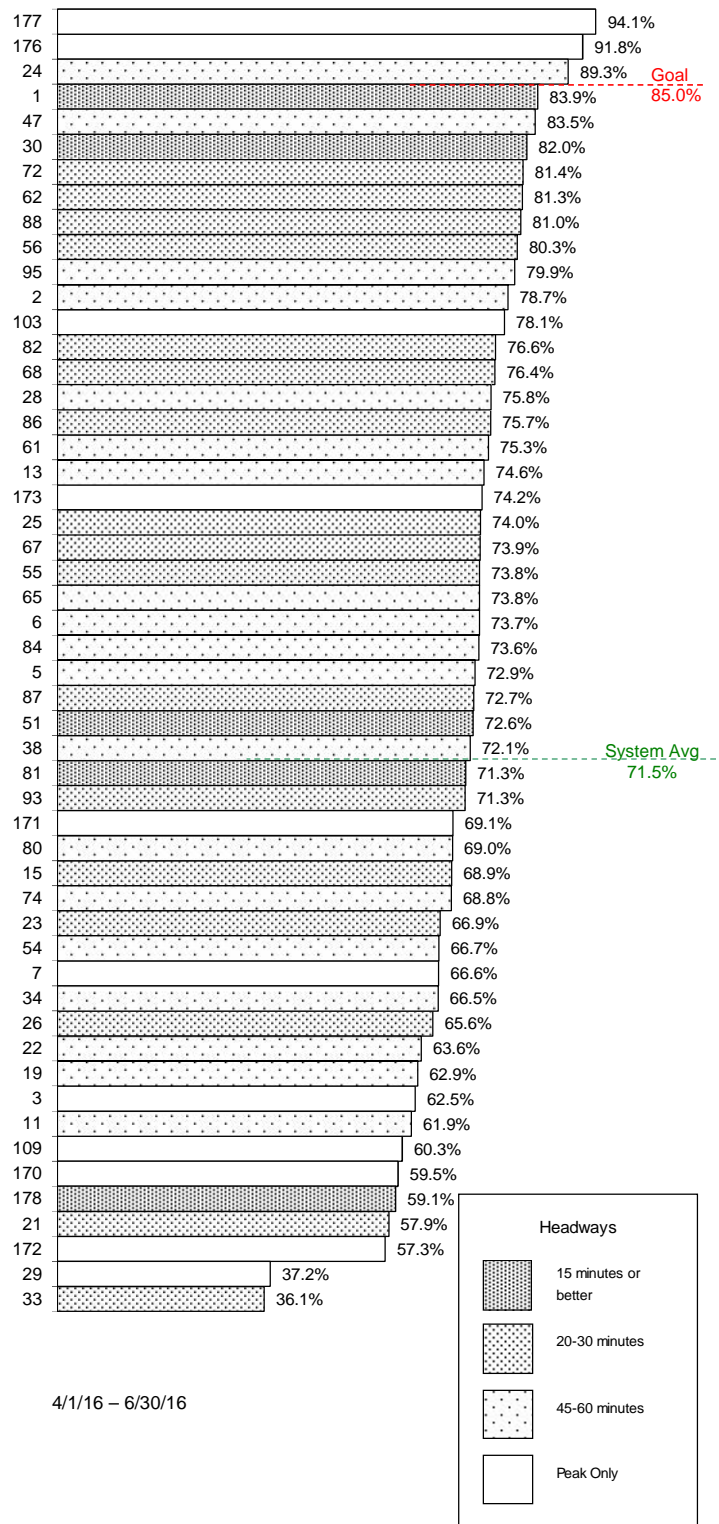
On-time performance is measured at time points, which are major stops shown on the public schedule (usually 4-6 per route).

A bus is considered on-time if it leaves its time point 0-4:59 minutes late. On-time performance indicates the percent of time points where the bus was on-time according to this definition.

Changes to reported on-time performance may be due to a recent modification made with reporting late trips. Prior to July 1, 2015, a bus was considered on-time if it left its time point 0-5:59 minutes late; however, that time frame did not match the on-time definition per RT's Service Standards policy, which is now accurately reflected as 0-4:59 minutes.

Notes:

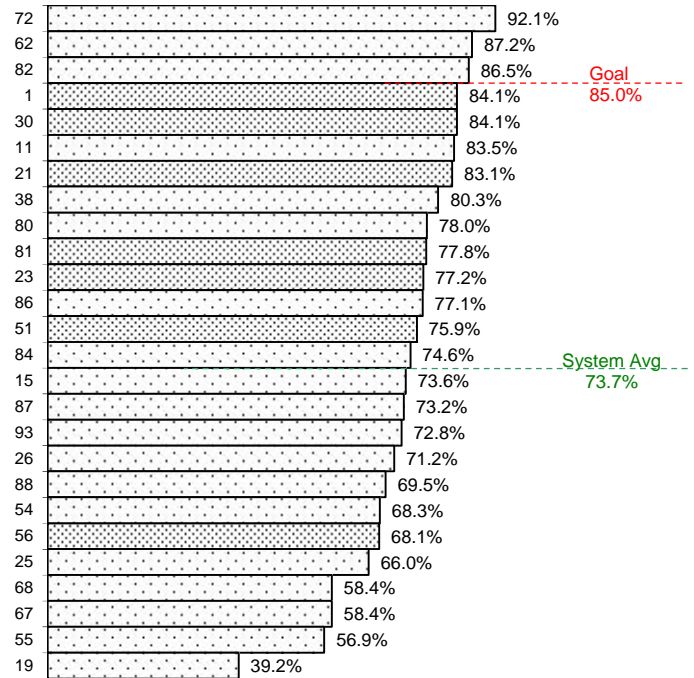
- Routes 33 experienced a large decrease in on-time performance, dropping from 75.9% last quarter to 36.1% this quarter. Drivers on this route have indicated that the recent schedule adherence issue is due to an increase in wheelchair boardings.

On-Time Performance


Saturday Bus Routes

On-time performance is measured at time points, which are major stops shown on the public schedule (usually 4-6 per route).

A bus is considered on-time if it leaves its time point 0-4:59 minutes late. On-time performance indicates the percent of time points where the bus was on-time according to this definition.

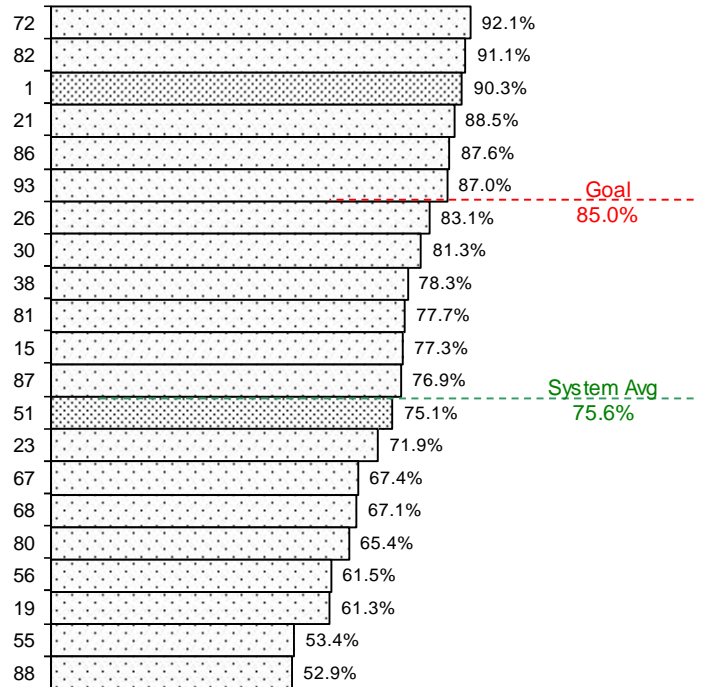
On-Time Performance


4/1/16 – 6/30/16

Sunday/Holiday Bus Routes

On-time performance is measured at time points, which are major stops along the route and shown on the public schedule (usually 4-6 per route).

A bus is considered on-time if it leaves its time point 0-4:59 minutes late. On-time performance indicates the percent of time points where the bus was on-time according to this definition.

On-Time Performance


4/1/16 – 6/30/16

Light Rail On-Time Departures

Light rail on-time performance is measured at trip start points. A one-way trip is considered on-time if it departs 0-5 minutes late. The goal is 97.0 percent on-time departures.

Blue Line on-time performance remained the same at 97.3 percent. Gold Line decreased slightly to 98.4 percent. Green Line increased to 96.2 percent.

Calendar Year/Qtr	Blue	Gold	Green
2015-Q1	98.0%	98.6%	97.9%
2015-Q2	97.8%	98.3%	95.9%
2015-Q3	97.6%	98.6%	98.6%
2015-Q4	97.2%	98.6%	96.3%
2016-Q1	97.3%	98.8%	95.4%
2016-Q2	97.3%	98.4%	96.2%



Weekday Bus Ridership

4/1/16 - 6/30/16

Route	Name	Boardings Per Day	Trips Per Day	Serv Hrs Per Day	Rev Hrs Per Day	(Goal = 27)	Full Cost Per Psgr	Net Cost Per Psgr	Farebox Recovery	Below Standards
						Psg'r Per Serv Hr				
7	Pocket Express	141	6	3.4	4.1	41.6	\$4.20	\$3.12	26%	
81	Florin-65th Street	3,020	119	74.9	104.2	40.3	\$4.98	\$3.90	22%	
87	Howe	1,140	55	28.3	41.3	40.2	\$5.22	\$4.14	21%	
51	Broadway-Stockton	4,147	143	105.6	132.2	39.3	\$4.60	\$3.52	23%	
75	Mather Field	173	14	4.4	10.0	38.9	\$8.39	\$7.31	13%	
3	Riverside Express	196	8	5.1	5.3	38.8	\$3.92	\$2.84	28%	
30	J Street (DASH)	2,062	116	53.7	84.5	38.4	\$5.91	\$4.84	18%	
72	Rosemont-Lincoln Village	1,114	63	29.3	44.1	38.1	\$5.71	\$4.63	19%	
1	Greenback	2,450	121	66.6	100.1	36.8	\$5.90	\$4.82	18%	
29	Arden-California Avenue	113	4	3.4	3.8	33.3	\$4.89	\$3.81	22%	
26	Fulton	1,212	52	36.8	51.4	32.9	\$6.12	\$5.04	18%	
103	Auburn Blvd	96	8	2.9	4.4	32.9	\$6.64	\$5.56	16%	
22	Arden	298	28	9.2	13.4	32.3	\$6.47	\$5.39	17%	
88	West El Camino	929	59	29.0	40.4	32.0	\$6.28	\$5.20	17%	
56	Pocket-C.R.C.	1,303	66	40.8	49.0	31.9	\$5.43	\$4.35	20%	
23	El Camino	1,991	65	64.8	83.9	30.7	\$6.08	\$5.00	18%	
15	Rio Linda Blvd-O Street	1,210	56	39.4	53.1	30.7	\$6.33	\$5.25	17%	
86	San Juan-Silver Eagle	1,264	61	41.3	57.5	30.6	\$6.56	\$5.48	16%	
93	Hillsdale	967	55	31.8	48.9	30.4	\$7.30	\$6.22	15%	
82	Howe-65th Street	1,745	66	58.8	80.2	29.7	\$6.63	\$5.55	16%	
11	Truxel Road	707	43	24.3	31.6	29.1	\$6.45	\$5.37	17%	
25	Marconi	1,129	55	38.8	53.8	29.1	\$6.88	\$5.80	16%	
80	Watt-Elkhorn	1,116	35	38.4	49.7	29.1	\$6.42	\$5.34	17%	
84	Watt Avenue-North Highlands	880	30	30.6	43.1	28.7	\$7.07	\$5.99	15%	
13	Northgate	401	31	15.2	19.0	26.4	\$6.83	\$5.75	16%	X
55	Scottsdale	776	52	29.9	38.1	26.0	\$7.08	\$6.00	15%	X
68	44th Street	1,360	59	52.5	66.4	25.9	\$7.04	\$5.96	15%	X
67	Franklin	1,325	58	51.6	64.3	25.7	\$7.00	\$5.92	15%	X
61	Fruitridge	575	31	22.8	30.6	25.2	\$7.66	\$6.59	14%	X
2	Riverside	436	26	17.3	25.3	25.2	\$8.39	\$7.31	13%	X
19	Rio Linda	762	29	30.4	40.8	25.1	\$7.72	\$6.64	14%	X
109	Hazel Express	93	4	3.7	3.8	25.0	\$5.90	\$4.82	18%	X
62	Freeport	1,208	60	48.5	61.3	24.9	\$7.32	\$6.24	15%	X
38	P/Q Streets	516	29	20.8	28.0	24.8	\$7.83	\$6.75	14%	X
21	Sunrise	1,235	70	53.3	67.6	23.2	\$7.90	\$6.82	14%	X
24	Madison-Greenback	153	27	7.1	13.0	21.5	\$12.22	\$11.14	9%	X
74	International	212	29	10.7	17.9	19.9	\$12.19	\$11.11	9%	X
6	Land Park	347	27	17.6	26.4	19.7	\$10.96	\$9.88	10%	X
54	Center Parkway	363	31	18.5	29.0	19.7	\$11.50	\$10.42	9%	X
65	Franklin South	346	28	20.1	27.4	17.2	\$11.45	\$10.37	9%	X
5	Meadowview-Valley Hi	195	31	11.4	15.1	17.1	\$11.21	\$10.13	10%	X
28	Fair Oaks-Folsom	390	32	23.3	30.7	16.7	\$11.36	\$10.28	10%	X
34	McKinley	242	27	16.4	26.3	14.8	\$15.66	\$14.59	7%	X
TOTAL		40,340	2,009	1,333	1,821	30.3				



Saturday Bus Ridership

4/1/16 - 6/30/16

Route	Name	Boardings	Trips	Serv Hrs	Rev Hrs	(Goal = 20) Psgr Per	Full Cost	Net Cost	Farebox	Below
		Per Day	Per Day	Per Day	Per Day	Serv Hr				
51	Broadway-Stockton	1,784	68	46.7	64.1	38.2	\$5.18	\$4.10	21%	
88	West El Camino	323	26	9.5	14.9	33.8	\$6.65	\$5.57	16%	
87	Howe	411	29	12.3	14.9	33.4	\$5.22	\$4.14	21%	
67	Franklin	693	28	21.7	28.2	31.9	\$5.86	\$4.79	18%	
75	Mather Field	111	11	3.5	8.3	31.9	\$10.73	\$9.65	10%	
15	Rio Linda Blvd-O Street	565	29	18.0	21.3	31.4	\$5.45	\$4.37	20%	
26	Fulton	334	21	10.9	15.2	30.8	\$6.56	\$5.48	16%	
68	44th Street	669	28	22.1	28.1	30.3	\$6.06	\$4.98	18%	
81	Florin-65th Street	1,384	60	46.0	59.0	30.1	\$6.15	\$5.08	18%	
55	Scottsdale	243	19	8.2	11.8	29.8	\$7.00	\$5.92	15%	
93	Hillsdale	332	22	11.9	14.6	28.0	\$6.35	\$5.27	17%	
86	San Juan-Silver Eagle	468	28	16.8	21.6	27.8	\$6.65	\$5.57	16%	
1	Greenback	919	66	33.4	45.6	27.6	\$7.15	\$6.07	15%	
25	Marconi	441	21	16.1	20.6	27.4	\$6.75	\$5.67	16%	
23	El Camino	1,446	53	54.1	64.1	26.7	\$6.39	\$5.31	17%	
30	J Street (DASH)	577	53	22.2	28.9	26.1	\$7.22	\$6.14	15%	
72	Rosemont-Lincoln Village	277	23	10.7	14.1	25.8	\$7.32	\$6.24	15%	
80	Watt-Elkhorn	743	29	30.0	42.1	24.8	\$8.18	\$7.10	13%	
21	Sunrise	638	42	28.4	45.9	22.5	\$10.38	\$9.31	10%	
56	Pocket-C.R.C.	622	55	28.0	37.3	22.3	\$8.64	\$7.56	12%	
82	Howe-65th Street	531	31	24.3	30.7	21.9	\$8.34	\$7.26	13%	
11	Truxel Road	310	26	15.3	21.3	20.3	\$9.89	\$8.81	11%	
84	Watt Avenue-North Highlands	370	20	19.5	28.5	19.0	\$11.11	\$10.03	10%	X
62	Freeport	391	29	23.2	32.8	16.9	\$12.11	\$11.03	9%	X
19	Rio Linda	290	20	17.8	21.2	16.3	\$10.58	\$9.50	10%	X
54	Center Parkway	105	24	8.4	12.7	12.5	\$17.44	\$16.36	6%	X
38	P/Q Streets	185	25	16.2	19.3	11.4	\$15.07	\$13.99	7%	X
TOTAL		15,161	886	575	767	26.4				

Costing factors and average fare assumptions from FY 2016 operating budget



Sun/Hol Bus Ridership

4/1/16 - 6/30/16

Route	Name	Boardings	Trips	Serv Hrs	Rev Hrs	(Goal = 20) Psgr Per	Full Cost	Net Cost	Farebox	Below
		Per Day	Per Day	Per Day	Per Day	Serv Hr				
51	Broadway-Stockton	1,273	50	34.3	41.9	37.1	\$4.75	\$3.67	23%	
81	Florin-65th Street	784	29	22.2	28.5	35.3	\$5.25	\$4.17	21%	
23	El Camino	875	28	26.0	39.3	33.6	\$6.48	\$5.40	17%	
15	Rio Linda Blvd-O Street	454	26	17.0	22.4	26.7	\$7.11	\$6.03	15%	
56	Pocket-C.R.C.	367	27	13.7	19.0	26.7	\$7.47	\$6.39	14%	
88	West El Camino	251	26	9.5	12.9	26.3	\$7.45	\$6.37	14%	
26	Fulton	240	20	9.3	11.4	25.7	\$6.85	\$5.77	16%	
80	Watt-Elkhorn	530	23	20.9	24.5	25.4	\$6.66	\$5.58	16%	
87	Howe	225	21	8.9	11.2	25.2	\$7.15	\$6.07	15%	
55	Scottsdale	173	16	6.9	10.9	25.1	\$9.06	\$7.98	12%	
86	San Juan-Silver Eagle	313	21	12.6	15.6	24.8	\$7.19	\$6.11	15%	
75	Mather Field	86	11	3.5	7.8	24.8	\$12.96	\$11.88	8%	
30	J Street (DASH)	292	28	11.8	14.8	24.7	\$7.30	\$6.22	15%	
68	44th Street	535	28	22.1	28.1	24.3	\$7.58	\$6.50	14%	
67	Franklin	517	28	21.7	27.8	23.8	\$7.74	\$6.66	14%	
1	Greenback	687	63	30.6	43.6	22.5	\$9.15	\$8.07	12%	
82	Howe-65th Street	456	28	21.4	27.5	21.3	\$8.71	\$7.63	12%	
93	Hillsdale	249	22	11.9	14.5	21.0	\$8.40	\$7.32	13%	
72	Rosemont-Lincoln Village	207	22	10.3	13.4	20.2	\$9.37	\$8.29	12%	
21	Sunrise	419	30	21.7	32.9	19.3	\$11.32	\$10.24	10%	X
19	Rio Linda	269	20	17.8	20.3	15.2	\$10.90	\$9.82	10%	X
38	P/Q Streets	145	20	12.3	14.6	11.8	\$14.48	\$13.41	7%	X
TOTAL		9,347	587	366	483	25.5				

Costing factors and average fare assumptions from FY 2016 operating budget



CBS Ridership

4/1/16 - 6/30/16

Route	Name	Boardings	Trips	Serv Hrs	Rev Hrs	Psg'r Per	Full Cost	(Goal < \$10.5)	Farebox	Contract	Below
		Per Day	Per Day	Per Day	Per Day	Serv Hr	Per Psg'r	Per Psg'r	Recovery	Service	Standards
171	Westside Flyer	94	6	4.7	4.9	20.0	\$9.09	\$3.83	58%	X	
172	Central Flyer	125	8	6.7	7.3	18.7	\$10.18	\$4.64	54%	X	
170	Eastside Flyer	115	8	6.1	6.9	18.8	\$10.42	\$4.88	53%	X	
177	Villages - Rancho CordoVan	117	58	5.8	7.1	20.2	\$10.46	\$5.48	48%	X	
173	Square Flyer	22	2	1.7	1.7	13.1	\$13.26	\$5.78	56%	X	
33	Dos Rios	178	60	7.5	11.5	23.6	\$11.20	\$10.12	10%		
178	Granite Shuttle	78	44	7.3	10.4	10.6	\$23.20	\$18.43	21%	X	X
47	Phoenix Park	115	24	11.2	13.5	10.3	\$20.41	\$19.33	5%		X
176	Kavala - Rancho CordoVan	31	14	5.8	6.8	5.3	\$38.25	\$22.37	42%	X	X
175	Sunridge - Rancho CordoVan	20	14	5.8	6.8	3.4	\$59.29	\$35.26	41%	X	X
95	Citrus Heights-Antelope Rd	51	23	7.7	10.8	6.7	\$36.60	\$35.52	3%		X
85	McClellan Shuttle	22	14	5.5	6.5	4.0	\$50.91	\$42.28	17%	X	X
TOTAL		946	261	70	88	13.4					

Costing factors and average fare assumptions from FY 2016 operating budget

Routes 85, 95 170, 171, 172, 173, 176, 177, and 178 are operated according to service agreements

Contract revenue has been treated as fare revenue, reducing net cost and increasing fare box recovery




List excludes CityRide dial-a-ride service launched 10/29/12

Quarterly Ridership Report
 Period Ending June 30, 2016

Trend Analysis

Apr. 1 - Jun. 30

Average Daily Boardings

		Boardings Per Day				Vehicle Service Hours Per Day				Boardings / Serv Hour	
		FY 2016	FY 2015	Variance	%	FY 2016	FY 2015	Variance	%	FY 2016	FY 2015
BUS	 Mon-Fri	40,340	44,744	-4,404	-9.8%	1,333	1,321	11	0.9%	30.3	33.9
	Saturday	15,161	17,798	-2,637	-14.8%	575	577	-3	-0.5%	26.4	30.8
	Sun/Hol	9,347	10,492	-1,145	-10.9%	366	367	-1	-0.2%	25.5	28.6
	CBS (Mon-Fri)	968	1,120	-152	-13.6%	76	68	8	11.9%	12.8	16.5
RAIL	 Mon-Fri	42,241	41,744	496	1.2%	301	263	38	14.4%	140.5	158.8
	Saturday	17,066	16,181	885	5.5%	178	159	19	11.8%	96.1	101.8
	Sun/Hol	12,314	12,418	-104	-0.8%	155	138	16	11.8%	79.6	89.7
DAR	 ADA Paratransit	1,011	959	52	5.4%	659	641	18	2.8%	1.53	1.50
	CityRide	38	39	-1	-3.6%	15.6	15.4	0.2	1.1%	2.41	2.53
		Boardings Per Day				Revenue Hours Per Day				Boardings / Rev Hour	
		FY 2016	FY 2015	Variance	%	FY 2016	FY 2015	Variance	%	FY 2016	FY 2015
Blue Line	Mon-Fri	21,819	20,326	1,493	7.3%	152	117	35	30.0%	143.7	174.1
	Saturday	8,354	7,771	583	7.5%	93	75	19	24.8%	89.7	104.2
	Sun/Hol	6,147	6,829	-682	-10.0%	81	65	16	25.1%	76.1	105.8
Gold Line	Mon-Fri	19,963	20,954	-991	-4.7%	134	131	3	2.0%	149.1	159.6
	Saturday	8,712	8,410	302	3.6%	85	84	0	0.2%	103.1	99.7
	Sun/Hol	6,168	5,589	579	10.4%	74	74	0	0.2%	83.4	75.7
Green Line	Mon-Fri	459	464	-6	-1.2%	15	15	0	0.0%	30.9	31.3

Service Hours = Running time only (first to last time point)

Revenue Hours = Service Hours plus breaks (layover/recovery)

Deadhead Hours = Travel to/from garage and in between routes if not in service

Total Vehicle Hours = Revenue hours plus deadhead

Bus vehicle hours are stated in terms of service hours per day

Rail hours are stated in terms of revenue hours

Dial-a-Ride (DAR) service hours are time spent in service or available for service (excludes scheduled lunch breaks and other out-of-service time).

**Quarterly Ridership Report
Period Ending June 30, 2016**
Trend Analysis
Bus - Weekdays

Q2 - Apr/May/June

Route	Name	Boardings Per Day				Vehicle Service Hours Per Day				Boardings/Serv Hr	
		FY 2016	FY 2015	Change	% Change	FY 2016	FY 2015	Change	% Change	FY 2016	FY 2015
1	Greenback	2,450	2,734	-284	-10.4%	66.6	66.6	0.0	0.0%	36.8	41.0
2	Riverside	436	481	-45	-9.4%	17.3	17.3	0.0	0.0%	25.2	27.8
3	Riverside Express	196	200	-4	-1.9%	5.1	5.1	0.0	0.0%	38.7	39.5
5	Meadowview-Valley Hi	195	265	-70	-26.5%	11.4	11.4	0.0	0.0%	17.1	23.3
6	Land Park	347	358	-11	-3.1%	17.6	17.6	0.0	0.0%	19.7	20.4
7	Pocket Express	141	136	5	3.9%	3.4	3.4	0.0	0.0%	41.6	40.0
11	Truxel Road	707	791	-84	-10.6%	24.3	24.3	0.0	0.0%	29.1	32.6
13	Northgate	401	416	-15	-3.6%	15.2	15.2	0.0	0.0%	26.4	27.4
15	Rio Linda Blvd-O Street	1,210	1,314	-104	-7.9%	39.4	37.7	1.7	4.6%	30.7	34.9
19	Rio Linda	762	897	-135	-15.1%	30.4	30.4	0.0	0.0%	25.1	29.6
21	Sunrise	1,235	1,458	-223	-15.3%	53.3	53.3	0.0	0.0%	23.2	27.4
22	Arden	298	329	-31	-9.5%	9.2	9.2	0.0	0.0%	32.3	35.7
23	El Camino	1,991	2,253	-262	-11.6%	64.8	64.8	0.0	0.1%	30.7	34.8
24	Madison-Greenback	153	176	-23	-13.0%	7.1	7.1	0.0	0.0%	21.5	24.7
25	Marconi	1,129	1,176	-47	-4.0%	38.8	36.3	2.5	6.9%	29.1	32.4
26	Fulton	1,212	1,407	-195	-13.8%	36.8	36.8	0.0	0.0%	32.9	38.2
28	Fair Oaks-Butterfield	390	336	54	16.1%	23.3	23.4	0.0	-0.2%	16.7	14.4
29	Arden-California Avenue	113	113	0	0.2%	3.4	3.4	0.0	0.0%	33.3	33.2
30	J Street (DASH)	2,062	2,227	-165	-7.4%	53.7	53.7	0.0	0.0%	38.4	41.5
34	McKinley	242	294	-52	-17.8%	16.4	16.4	0.0	0.0%	14.8	18.0
38	P/Q Streets	516	546	-30	-5.5%	20.8	20.8	0.0	0.0%	24.8	26.2
51	Broadway-Stockton	4,147	4,328	-181	-4.2%	105.6	105.6	0.0	0.0%	39.3	41.0
54	Center Parkway	363	473	-110	-23.2%	18.5	18.4	0.1	0.3%	19.7	25.7
55	Scottsdale	776	932	-156	-16.7%	29.9	29.9	0.0	0.1%	26.0	31.2
56	Pocket-C.R.C.	1,303	1,776	-473	-26.7%	40.8	40.2	0.7	1.7%	31.9	44.2
61	Fruitridge	575	633	-58	-9.1%	22.8	21.3	1.5	6.9%	25.2	29.7
62	Freeport	1,208	1,229	-22	-1.8%	48.5	48.5	0.0	0.0%	24.9	25.3
65	Franklin South	346	339	7	2.0%	20.1	11.1	9.0	80.8%	17.2	30.5
67	Franklin	1,325	1,572	-248	-15.8%	51.6	51.6	0.0	0.0%	25.7	30.5
68	44th Street	1,360	1,486	-126	-8.5%	52.5	52.5	0.0	0.0%	25.9	28.3
72	Rosemont-Lincoln Village	1,114	1,126	-12	-1.0%	29.3	29.3	0.0	-0.1%	38.1	38.4
74	International	212	237	-24	-10.3%	10.7	10.7	0.0	0.0%	19.9	22.2
75	Mather Field	173	185	-12	-6.5%	4.4	4.4	0.0	0.0%	39.0	41.7
80	Watt-Elkhorn	1,116	1,155	-39	-3.4%	38.4	35.4	3.1	8.6%	29.1	32.7
81	Florin-65th Street	3,020	3,396	-376	-11.1%	74.9	80.3	-5.5	-6.8%	40.3	42.3
82	Howe-65th Street	1,745	1,917	-171	-8.9%	58.8	58.8	0.0	0.0%	29.7	32.6
84	Watt Avenue-North Highlands	880	994	-114	-11.5%	30.6	32.2	-1.6	-5.0%	28.7	30.8
86	San Juan-Silver Eagle	1,264	1,488	-224	-15.0%	41.3	41.4	0.0	-0.1%	30.6	36.0
87	Howe	1,140	1,210	-70	-5.8%	28.3	28.3	0.0	0.0%	40.2	42.7
88	West El Camino	929	1,081	-152	-14.0%	29.0	29.0	0.0	0.0%	32.0	37.3
93	Hillsdale	967	1,077	-110	-10.2%	31.8	31.8	-0.1	-0.2%	30.4	33.8
103	Auburn Blvd	96	98	-2	-1.7%	2.9	2.9	0.0	0.0%	32.9	33.5
109	Hazel Express	93	102	-8	-8.3%	3.7	3.7	0.0	0.0%	25.0	27.3
TOTAL		40,340	44,744	-4,404	-9.8%	1,332.7	1,321.4	11.3	0.9%	30.3	33.9

**Quarterly Ridership Report
Period Ending June 30, 2016**
Trend Analysis
Bus - Saturday

Q2 - Apr/May/Jun

Route Name	Boardings Per Day				Vehicle Service Hours Per Day				Boardings/Serv Hr	
	FY 2016	FY 2015	Change	% Change	FY 2016	FY 2015	Change	% Change	FY 2016	FY 2015
1 Greenback	919	1,112	-192	-17.3%	33.4	33.5	-0.1	-0.4%	27.6	33.2
11 Truxel Road	310	345	-35	-10.0%	15.3	15.3	0.0	0.0%	20.3	22.6
15 Rio Linda Blvd-O Street	565	664	-99	-14.9%	18.0	19.0	-1.0	-5.3%	31.4	35.0
19 Rio Linda	290	380	-90	-23.8%	17.8	17.8	0.0	0.0%	16.3	21.4
21 Sunrise	638	698	-60	-8.6%	28.4	28.4	0.0	0.0%	22.5	24.6
23 El Camino	1,446	1,660	-214	-12.9%	54.1	54.2	-0.1	-0.3%	26.7	30.6
25 Marconi	441	508	-67	-13.3%	16.1	16.1	0.0	0.0%	27.4	31.6
26 Fulton	334	382	-48	-12.6%	10.9	10.9	0.0	0.0%	30.8	35.2
30 J Street (DASH)	577	671	-94	-14.0%	22.2	22.2	0.0	0.0%	26.1	30.3
38 P/Q Streets	185	224	-40	-17.7%	16.2	16.2	0.0	0.0%	11.4	13.9
51 Broadway-Stockton	1,784	2,006	-222	-11.0%	46.7	46.7	0.0	0.0%	38.2	43.0
54 Center Parkway	105	159	-54	-33.9%	8.4	8.4	0.0	0.0%	12.5	18.9
55 Scottsdale	243	305	-62	-20.4%	8.2	8.2	0.0	0.0%	29.8	37.4
56 Pocket-C.R.C.	622	930	-307	-33.1%	28.0	28.0	0.0	0.0%	22.3	33.2
62 Freeport	391	423	-32	-7.6%	23.2	23.2	0.0	0.0%	16.9	18.2
67 Franklin	693	806	-113	-14.0%	21.7	21.7	0.0	0.0%	31.9	37.1
68 44th Street	669	724	-55	-7.5%	22.1	22.1	0.0	0.0%	30.3	32.8
72 Rosemont-Lincoln Village	277	303	-26	-8.6%	10.7	10.7	0.0	0.0%	25.8	28.2
75 Mather Field	111	126	-15	-12.0%	3.5	3.5	0.0	0.0%	31.9	36.2
80 Watt-Elkhorn	743	831	-89	-10.7%	30.0	30.0	0.0	0.0%	24.8	27.8
81 Florin-65th Street	1,384	1,572	-188	-11.9%	46.0	46.0	0.0	0.0%	30.1	34.2
82 Howe-65th Street	531	618	-87	-14.0%	24.3	24.3	0.0	0.0%	21.9	25.5
84 Watt Avenue-North Highlands	370	492	-122	-24.8%	19.5	21.0	-1.5	-7.1%	19.0	23.5
86 San Juan-Silver Eagle	468	589	-121	-20.6%	16.8	16.8	0.0	0.0%	27.8	35.0
87 Howe	411	451	-40	-8.8%	12.3	12.3	0.0	0.0%	33.3	36.6
88 West El Camino	323	408	-85	-20.9%	9.5	9.5	0.0	0.0%	33.8	42.8
93 Hillsdale	332	413	-81	-19.6%	11.9	11.9	0.0	0.0%	28.0	34.8
TOTAL	15,161	17,798	-2,637	-14.8%	574.7	577.5	-2.8	-0.5%	26.4	30.8

**Quarterly Ridership Report
Period Ending June 30, 2016**
Trend Analysis
Bus - Sun/Hol

Q2 - Apr/May/Jun

Route	Name	Boardings Per Day				Vehicle Service Hours Per Day				Boardings/Serv Hr	
		FY 2016	FY 2015	Change	% Change	FY 2016	FY 2015	Change	% Change	FY 2016	FY 2015
1	Greenback	687	788	-101	-12.8%	30.6	30.6	0.0	0.0%	22.5	25.8
15	Rio Linda Blvd-O Street	454	478	-25	-5.2%	17.0	17.7	-0.8	-4.2%	26.7	27.0
19	Rio Linda	269	324	-55	-16.9%	17.8	17.8	0.0	0.0%	15.1	18.2
21	Sunrise	419	464	-45	-9.7%	21.7	21.7	0.0	0.0%	19.3	21.4
23	El Camino	875	996	-121	-12.2%	26.0	26.0	0.0	0.0%	33.6	38.3
26	Fulton	240	248	-8	-3.1%	9.3	9.3	0.0	0.0%	25.7	26.5
30	J Street (DASH)	292	337	-45	-13.4%	11.8	11.8	0.0	0.0%	24.7	28.6
38	P/Q Streets	145	164	-19	-11.5%	12.3	12.3	0.0	0.0%	11.8	13.4
51	Broadway-Stockton	1,273	1,333	-60	-4.5%	34.3	34.3	0.0	0.0%	37.1	38.9
55	Scottsdale	173	180	-6	-3.5%	6.9	6.9	0.0	0.0%	25.1	26.0
56	Pocket-C.R.C.	367	553	-186	-33.7%	13.7	13.7	0.0	0.0%	26.7	40.3
67	Franklin	517	557	-40	-7.1%	21.7	21.7	0.0	0.0%	23.8	25.6
68	44th Street	535	573	-38	-6.6%	22.1	22.1	0.0	0.0%	24.2	26.0
72	Rosemont-Lincoln Village	207	222	-15	-6.9%	10.3	10.3	0.0	0.0%	20.2	21.6
75	Mather Field	86	82	4	5.4%	3.5	3.5	0.0	0.0%	24.8	23.5
80	Watt-Elkhorn	530	598	-68	-11.4%	20.9	20.9	0.0	0.0%	25.4	28.7
81	Florin-65th Street	784	860	-76	-8.9%	22.2	22.2	0.0	0.0%	35.3	38.7
82	Howe-65th Street	456	469	-13	-2.9%	21.4	21.4	0.0	0.0%	21.3	21.9
86	San Juan-Silver Eagle	313	362	-49	-13.6%	12.6	12.6	0.0	0.0%	24.8	28.8
87	Howe	225	290	-65	-22.5%	8.9	8.9	0.0	0.0%	25.2	32.5
88	West El Camino	251	309	-58	-18.8%	9.5	9.5	0.0	0.0%	26.3	32.4
93	Hillsdale	249	304	-55	-18.2%	11.9	11.9	0.0	0.0%	21.0	25.7
TOTAL		9,347	10,492	-1,145	-10.9%	366.4	367.1	-0.8	-0.2%	25.5	28.6

Trend Analysis
CBS - Weekdays

Q2 - Apr/May/Jun

Route	Name	Boardings Per Day				Vehicle Service Hours Per Day				Boardings/Serv Hr	
		FY 2016	FY 2015	Change	% Change	FY 2016	FY 2015	Change	% Change	FY 2016	FY 2015
33	Dos Rios	178	204	-26	-12.7%	7.5	7.5	0.0	0.0%	23.6	27.1
47	Phoenix Park	115	146	-31	-21.2%	11.2	11.2	0.0	0.0%	10.3	13.0
85	McClellan Shuttle	22	21	1	4.8%	5.5	5.5	0.1	1.1%	4.0	3.8
95	Citrus Heights-Antelope Rd	51	89	-38	-42.7%	7.7	7.7	0.0	0.0%	6.6	11.6
170	Eastside Flyer	115	126	-11	-8.7%	6.1	6.5	-0.3	-5.3%	18.8	19.5
171	Westside Flyer	94	88	6	6.8%	4.7	4.5	0.3	5.6%	20.0	19.8
172	Central Flyer	125	135	-10	-7.4%	6.7	6.3	0.3	5.4%	18.7	21.3
173	Square Flyer	22	24	-2	-8.3%	1.7	1.6	0.1	5.0%	13.1	15.0
175	Cordovan - Sunridge	20	N/A	N/A	N/A	5.8	N/A	N/A	N/A	N/A	N/A
176	Cordovan - Kavala	31	36	-5	-13.9%	5.8	4.5	1.3	29.6%	5.3	8.0
177	Cordovan - Villages	117	159	-42	-26.4%	5.8	5.8	0.0	0.0%	20.2	27.4
178	Granite Shuttle	78	92	-14	-15.2%	7.3	6.8	0.5	7.3%	10.6	13.5
TOTAL		968	1,120	-152	-13.6%	75.9	67.9	8.1	11.9%	12.8	16.5


Average Daily Ridership by Time Period

FY16 - 4/1/16 - 6/30/16



BLUE LINE - TOTAL	AM Peak (6:00 - 9:00a)		Midday (9:01a - 3:29p)		PM Peak (3:30 - 6:00p)		Other Weekday (<6:00a or >6:00p)		Total Weekday	
	On	Off	On	Off	On	Off	On	Off	On	Off
WATT / I-80	530	352	580	596	303	323	302	352	1,715	1,623
WATT I-80 WEST	94	4	28	54	0	48	19	4	140	110
ROSEVILLE RD	408	24	85	215	13	344	75	22	581	604
MARCONI / ARCADE	403	126	354	283	108	259	126	114	990	782
SWANSTON	124	57	81	95	36	104	66	48	307	304
ROYAL OAKS	145	71	216	194	50	129	119	156	531	550
ARDEN / DEL PASO	281	144	430	449	104	241	192	253	1,007	1,086
GLOBE AVENUE	112	38	151	102	29	80	45	53	336	272
ALKALI FLAT / LA VALENT	203	197	543	441	103	85	103	170	951	893
12TH & I STREETS	48	402	219	174	264	62	61	60	592	698
CATHEDRAL SQUARE	76	454	409	513	303	70	153	94	941	1,132
7TH / 9TH & K	172	450	656	389	382	142	299	167	1,509	1,149
7TH / 8TH & CAPITOL	31	279	155	160	230	40	47	106	462	585
8TH & O STREETS	101	503	258	197	492	39	51	68	902	808
ARCHIVES PLAZA	52	313	124	117	234	42	56	47	466	519
13TH STREET	76	112	217	278	101	86	155	133	549	608
16TH STREET	291	618	716	786	410	225	414	280	1,831	1,908
BROADWAY	209	240	325	400	244	159	174	145	951	944
4TH/WAYNE HULTGREN	107	252	273	141	71	122	42	52	494	567
CITY COLLEGE	164	397	626	518	148	114	178	89	1,117	1,117
FRUITRIDGE	216	69	231	211	85	101	109	93	640	474
47TH AVE	278	86	150	190	47	230	112	118	588	624
FLORIN	338	223	469	627	172	240	202	295	1,181	1,385
MEADOWVIEW	430	121	368	425	106	291	174	243	1,079	1,081
FRANKLIN	343	35	97	167	34	283	65	106	540	591
CENTER PKWY	98	66	79	82	26	96	61	65	264	310
CRC	493	190	334	369	152	293	182	250	1,161	1,102
	5,821	5,821	8,174	8,174	4,249	4,249	3,581	3,581	21,825	21,825

Average Daily Ridership by Time Period

FY16 - 4/1/16 - 6/30/16



GOLD LINE - TOTAL	AM Peak (6:00 - 9:00a)		Midday (9:01a - 3:29p)		PM Peak (3:30 - 6:00p)		Other Weekday (<6:00a or >6:00p)		Total Weekday	
	On	Off	On	Off	On	Off	On	Off	On	Off
SAC VALLEY	133	78	110	125	112	71	48	45	403	320
7TH & I	24	11	113	3	240	0	29	0	406	14
8TH & H	0	194	10	133	23	23	2	37	34	388
7TH & K	91	19	272	11	326	2	93	9	782	41
8TH & K	3	176	18	371	3	162	11	151	35	859
7TH / 8TH & CAPITOL	21	245	101	210	137	97	24	75	282	627
8TH & O STREETS	102	405	246	203	552	49	43	66	944	722
ARCHIVES PLAZA	83	419	265	184	387	65	50	43	785	711
13TH STREET	104	95	304	241	146	113	101	36	655	485
16TH STREET	386	509	861	875	536	361	296	264	2,078	2,010
23RD STREET	152	70	176	222	141	179	87	91	555	562
29TH STREET	262	377	805	801	363	217	173	192	1,603	1,586
39TH STREET	80	58	132	79	70	94	43	50	325	282
48TH STREET	48	51	81	85	52	66	37	27	219	229
59TH STREET	68	69	88	80	83	79	32	24	271	252
65TH STREET	320	352	658	684	292	414	251	237	1,521	1,687
POWER INN ROAD	161	110	282	211	116	133	91	47	650	500
COLLEGE GREENS	137	145	428	369	149	166	88	136	802	816
WATT / MANLOVE	489	149	381	380	154	528	163	144	1,187	1,201
STARFIRE	102	36	112	113	46	103	54	129	314	381
TIBER	75	58	153	114	56	140	65	49	349	360
BUTTERFIELD	131	207	240	224	181	202	75	116	628	748
MATHER FIELD / MILLS	414	236	631	557	251	517	289	299	1,585	1,609
ZINFANDEL	201	171	349	391	196	253	237	158	983	973
CORDOVA TOWN CTR	178	67	215	199	107	207	79	83	580	556
SUNRISE	226	99	221	231	144	244	134	129	726	703
HAZEL	82	57	56	63	34	70	16	15	188	205
IRON POINT	168	39	83	161	77	224	43	22	372	445
GLENN	122	69	36	64	50	92	38	16	246	242
HIST FOLSOM	250	41	111	157	57	214	36	36	453	449
	4,612	4,612	7,540	7,540	5,082	5,082	2,730	2,730	19,963	19,963


Average Daily Ridership by Time Period


FY16 - 4/1/16 - 6/30/16

GREEN LINE - TOTAL	AM Peak (6:00 - 9:00a)		Midday (9:01a - 3:29p)		PM Peak (3:30 - 6:00p)		Other Weekday (<6:00a or >6:00p)		Total Weekday	
	On	Off	On	Off	On	Off	On	Off	On	Off
RICHARDS BLVD	32	24	85	78	35	42	13	24	166	168
7TH & I	5	9	10	23	4	9	2	4	21	45
7TH & K	3	8	14	29	3	11	3	4	23	51
7TH / 8TH & CAPITOL	3	3	11	4	5	3	6	1	25	11
8TH & O STREETS	10	5	12	12	5	3	5	3	31	23
ARCHIVES PLAZA	10	9	12	12	3	5	2	1	27	26
13TH STREET	9	19	33	53	15	19	9	12	67	103
8TH & K	9	3	28	9	15	2	9	2	62	16
8TH & H	7	9	18	4	9	1	4	2	37	16
	89	89	224	224	95	95	51	51	459	459

**Quarterly Ridership Report
Period Ending June 30, 2016**

Average Weekday Ridership
Historical Trends by Station


BLUE LINE - TOTAL	Year Ended ¹ 6/30/09		Year Ended ² 6/30/10		Year Ended 6/30/11		Year Ended 6/30/12		Year Ended 6/30/13		Year Ended 6/30/2014		Year Ended 6/30/2015		Year Ended 6/30/2016		Percent Change FY15 to FY16	
	On	Off	On	Off	On	Off	On	Off	On	Off	On	Off	On	Off	On	Off	On	Off
WATT / I-80	2,487	2,295	2,111	2,087	1,785	1,825	2,164	2,108	2,157	2,088	2,020	2,130	1,871	1,859	1,884	1,748	1%	-6%
WATT I-80 WEST ROSEVILLE RD	96	216	102	161	143	150	116	116	131	127	118	165	91	97	130	131	43%	35%
MARCONI / ARCADE SWANSTON ROYAL OAKS	699	1,178	634	1,035	677	713	633	736	633	635	576	596	527	558	564	683	7%	22%
ARDEN / DEL PASO GLOBE AVENUE ALKALI FLAT / LA VALENTINA	1,262	934	999	928	827	716	916	870	1,057	959	1,062	988	825	866	1,045	914	27%	6%
12TH & I STREETS CATHEDRAL SQUARE 7TH / 9TH & K	416	417	313	267	271	294	269	299	313	304	341	393	346	353	308	381	-11%	8%
7TH / 8TH & CAPITOL 8TH & O STREETS ARCHIVES PLAZA	751	707	547	437	429	398	515	417	588	539	602	535	633	612	599	592	-5%	-3%
13TH STREET 16TH STREET BROADWAY	1,644	1,917	1,605	1,777	1,186	1,366	1,361	1,606	1,297	1,457	1,316	1,394	1,203	1,319	1,194	1,270	-1%	-4%
4TH/WAYNE HULTGREN CITY COLLEGE FRUITRIDGE	317	374	309	320	243	253	296	301	297	288	304	304	356	357	316	298	-11%	-16%
47TH AVE FLORIN MEADOWVIEW	1,805	1,402	1,256	1,199	920	948	949	978	1,086	1,020	1,076	1,058	951	979	1,025	1,001	8%	2%
FRANKLIN CENTER PKWY CRC	732	711	639	677	512	551	612	662	504	591	576	577	522	598	629	668	20%	12%
	1,203	1,295	998	1,111	885	893	846	939	743	927	809	871	715	1,035	913	988	28%	-5%
	3,136	2,972	2,629	2,156	1,825	1,652	2,022	1,887	1,921	1,890	1,943	1,825	1,381	1,042	1,466	1,128	6%	8%
	1,061	955	967	753	701	616	673	629	611	637	588	593	809	705	766	830	-5%	18%
	891	714	855	653	754	668	763	679	675	693	693	707	737	651	843	769	14%	18%
	730	521	619	511	478	484	519	487	489	491	520	477	522	483	550	498	5%	3%
	398	541	446	496	346	392	429	416	508	472	494	478	664	518	641	619	-3%	19%
	2,758	2,850	2,454	2,564	1,767	1,982	2,213	2,396	2,008	2,225	1,984	2,148	1,731	1,774	2,104	2,177	22%	23%
	1,218	1,503	1,073	1,127	863	924	1,030	930	1,034	1,012	1,014	929	800	927	1,042	997	30%	8%
	677	812	850	656	637	570	760	577	684	594	723	532	562	422	704	611	25%	45%
	1,795	1,896	1,923	2,061	1,433	1,393	1,757	1,682	1,689	1,789	1,772	1,626	1,257	945	1,506	1,434	20%	52%
	822	762	654	633	535	552	675	682	642	618	612	577	462	613	636	568	38%	-7%
	673	718	626	721	649	576	717	728	763	682	720	733	623	729	615	773	-1%	6%
	2,322	2,085	1,672	1,902	1,383	1,341	1,508	1,723	1,606	1,631	1,590	1,783	1,340	1,602	1,322	1,493	-1%	-7%
	3,456	3,575	3,050	3,098	2,443	2,437	2,813	2,706	2,774	2,542	2,460	2,493	2,057	1,940	1,267	1,367	-38%	-30%
	-	-	-	-	-	-	-	-	-	-	-	-	-	-	550	627	N/A	N/A
	-	-	-	-	-	-	-	-	-	-	-	-	-	-	337	327	N/A	N/A
	-	-	-	-	-	-	-	-	-	-	-	-	-	-	1,234	1,292	N/A	N/A
	31,349	31,349	27,331	27,331	21,693	21,692	24,555	24,555	24,209	24,210	23,912	23,912	20,984	20,984	24,185	24,185	15%	15%

Average Weekday Ridership
Historical Trends by Station


GOLD LINE - TOTAL	Year Ended ¹ 6/30/09		Year Ended ² 6/30/10		Year Ended 6/30/11		Year Ended 6/30/12		Year Ended 6/30/13		Year Ended 6/30/2014		Year Ended 6/30/2015		Year Ended 6/30/2016		Percent Change FY15 to FY16	
	On	Off	On	Off	On	Off	On	Off	On	Off	On	Off	On	Off	On	Off	On	Off
SAC VALLEY	749	951	741	619	490	561	504	482	387	363	439	299	483	301	400	350	-17%	17%
7TH & I 8TH & H	715	-	636	-	379	34	375	22	359	9	399	14	549	28	401	19	-27%	-34%
7TH & K 8TH & K	-	-	687	13	886	61	1,047	47	1,002	46	1,016	58	757	40	690	40	-9%	0%
7TH / 8TH & CAPITOL	-	1,922	-	1,972	80	1,585	71	1,567	39	1,351	48	1,173	35	876	43	816	23%	-7%
8TH & O STREETS ARCHIVES PLAZA	1,716	557	982	460	633	649	610	572	483	511	498	511	568	686	462	661	-19%	-4%
13TH STREET 16TH STREET	1,165	672	946	632	911	767	871	832	732	714	746	687	934	643	802	653	-14%	2%
23RD STREET 29TH STREET	1,085	618	897	628	723	745	691	699	628	660	620	663	681	616	694	641	2%	4%
39TH STREET 48TH STREET	780	648	718	526	536	460	524	484	627	538	515	487	569	542	650	503	14%	-7%
59TH STREET 65TH STREET	3,139	2,368	2,974	2,476	2,168	2,169	2,437	2,367	2,146	2,317	1,982	2,148	1,997	1,918	2,061	2,048	3%	7%
POWER INN ROAD COLLEGE GREENS	809	911	763	773	625	610	661	580	573	571	549	500	585	627	544	555	-7%	-11%
WATT / MANLOVE STARFIRE	2,235	2,238	2,079	1,919	1,597	1,622	1,817	1,684	1,767	1,571	1,659	1,599	1,544	1,690	1,593	1,578	3%	-7%
TIBER BUTTERFIELD	504	525	386	340	355	310	353	307	396	321	350	295	276	281	301	298	9%	6%
MATHER FIELD / MILLS ZINFANDEL	209	340	241	232	194	237	204	227	206	231	216	211	250	215	208	238	-17%	10%
CORDOVA TOWN CTR SUNRISE	391	259	365	291	255	294	303	245	308	287	254	259	279	305	245	262	-12%	-14%
HAZEL IRON POINT	1,945	2,544	1,826	1,920	1,523	1,520	1,670	1,762	1,678	1,708	1,634	1,728	1,612	1,814	1,645	1,658	2%	-9%
GLENN HIST FOLSOM	1,108	1,321	1,181	1,201	832	806	846	806	796	770	758	723	727	677	585	576	-20%	-15%
	1,153	973	856	878	769	752	823	779	795	736	808	773	892	854	825	796	-7%	-7%
	1,299	1,483	1,318	1,665	1,185	1,170	1,214	1,330	1,256	1,333	1,179	1,265	1,097	1,314	1,120	1,203	2%	-8%
	575	889	605	628	439	358	511	388	480	416	443	375	545	290	353	382	-35%	32%
	384	420	388	461	307	323	372	383	358	390	371	390	392	357	347	367	-11%	3%
	817	664	741	790	677	662	737	705	690	719	714	677	706	683	652	700	-8%	3%
	2,581	2,279	2,048	2,350	1,600	1,632	1,762	1,914	1,814	1,844	1,758	1,754	1,591	2,013	1,661	1,610	4%	-20%
	1,034	1,064	1,236	1,201	878	833	942	921	1,040	1,010	1,064	1,119	1,155	1,211	1,021	1,053	-12%	-13%
	654	638	788	781	652	601	684	698	661	602	638	618	702	588	614	553	-12%	-6%
	823	938	972	1,111	836	825	840	909	883	862	823	803	687	748	762	684	11%	-9%
	189	285	187	445	199	190	215	239	209	192	186	179	169	204	172	206	2%	1%
	419	643	363	593	446	466	481	537	473	497	480	488	541	450	422	481	-22%	7%
	264	436	256	360	325	308	289	294	284	247	241	261	183	219	248	228	36%	4%
	433	590	582	495	512	460	533	510	508	511	486	513	465	420	421	449	-10%	7%
	27,175	27,175	25,760	25,759	21,009	21,010	22,443	22,591	21,602	21,608	20,895	20,888	21,008	21,008	19,974	19,974	-5%	-5%


Average Weekday Ridership

Historical Trends by Station



GREEN LINE - TOTAL	Year Ended 6/30/13		Year Ended 6/30/14		Year Ended 6/30/2015		Year Ended 6/30/2016		Percent Change FY15 to FY16	
	On	Off	On	Off	On	Off	On	Off	On	Off
RICHARDS BLVD	79	82	103	105	150	143	158	150	5%	5%
7TH & I	13	16	13	25	24	38	20	40	-18%	4%
7TH & K	25	34	26	41	22	48	21	51	-2%	6%
7TH / 8TH & CAPITOL	16	13	22	14	35	25	34	18	-5%	-28%
8TH & O STREETS	21	17	28	23	28	27	29	25	2%	-8%
ARCHIVES PLAZA	33	17	32	21	37	28	30	27	-18%	-5%
13TH STREET	51	68	58	74	76	104	59	96	-23%	-7%
8TH & K	38	35	48	38	55	36	61	20	11%	-45%
8TH & H	19	15	22	12	38	16	33	18	-12%	14%
	297	297	352	352	464	464	444	444	-4%	-4%