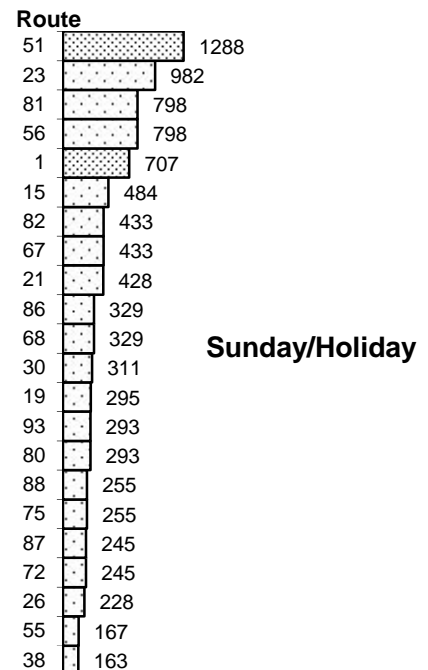
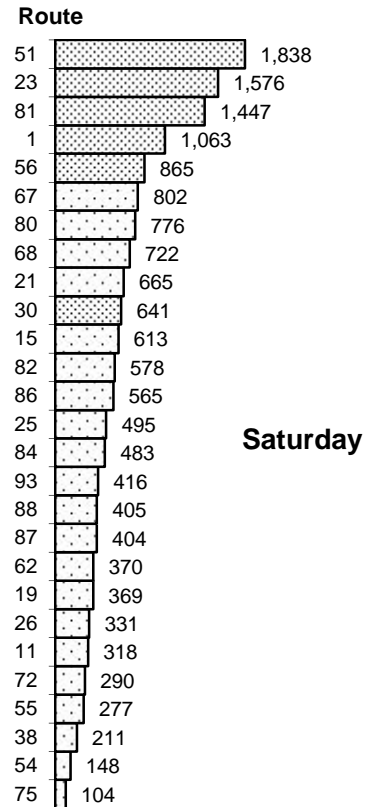
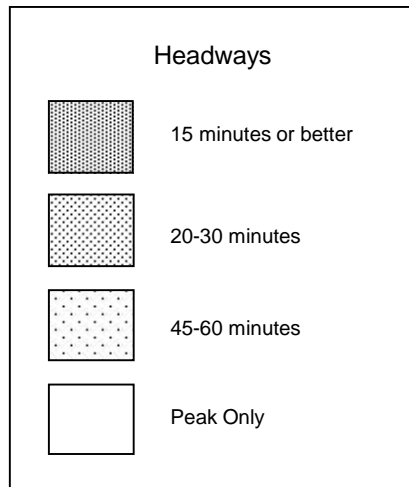
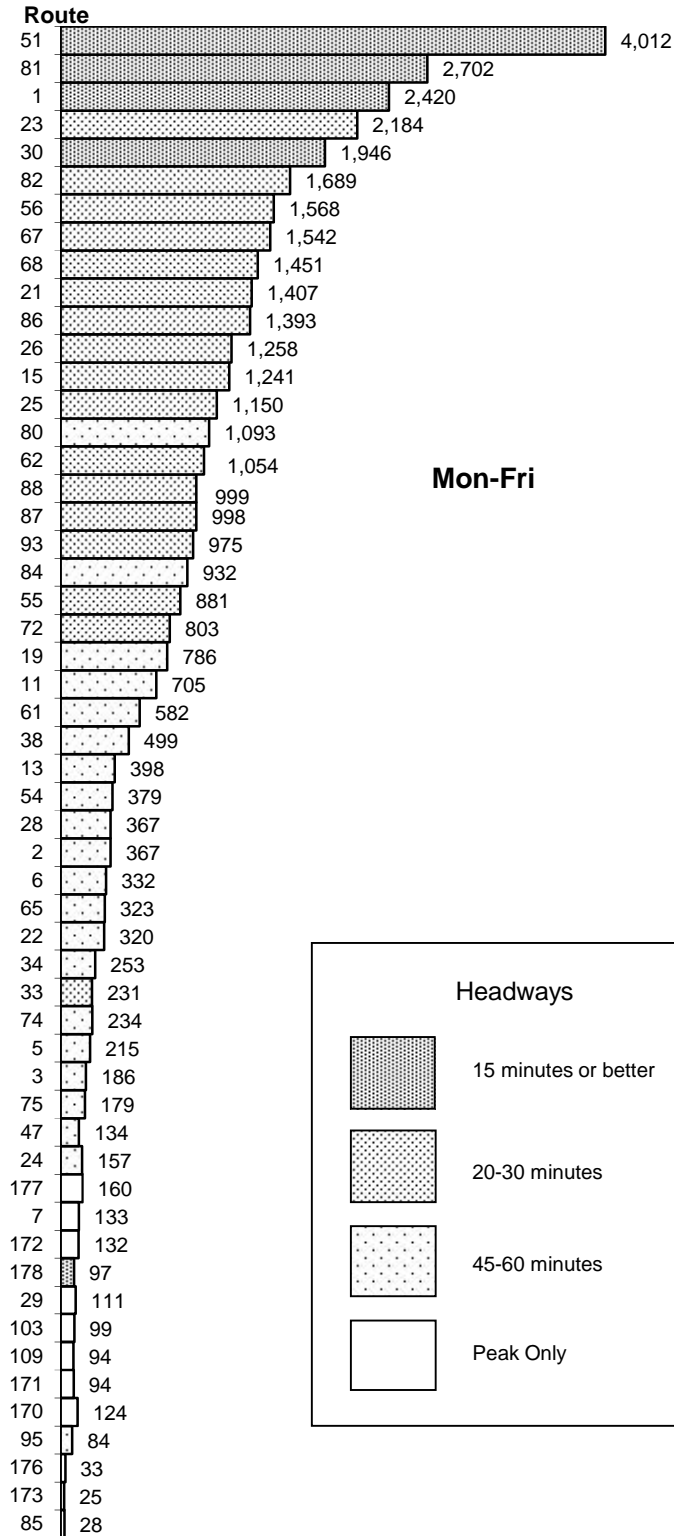




Quarterly Ridership Report
Period Ending September 5, 2015
(Pre-September Service Changes)

RT Bus Routes

Average Daily Boardings



Performance Monitoring
Monday-Friday

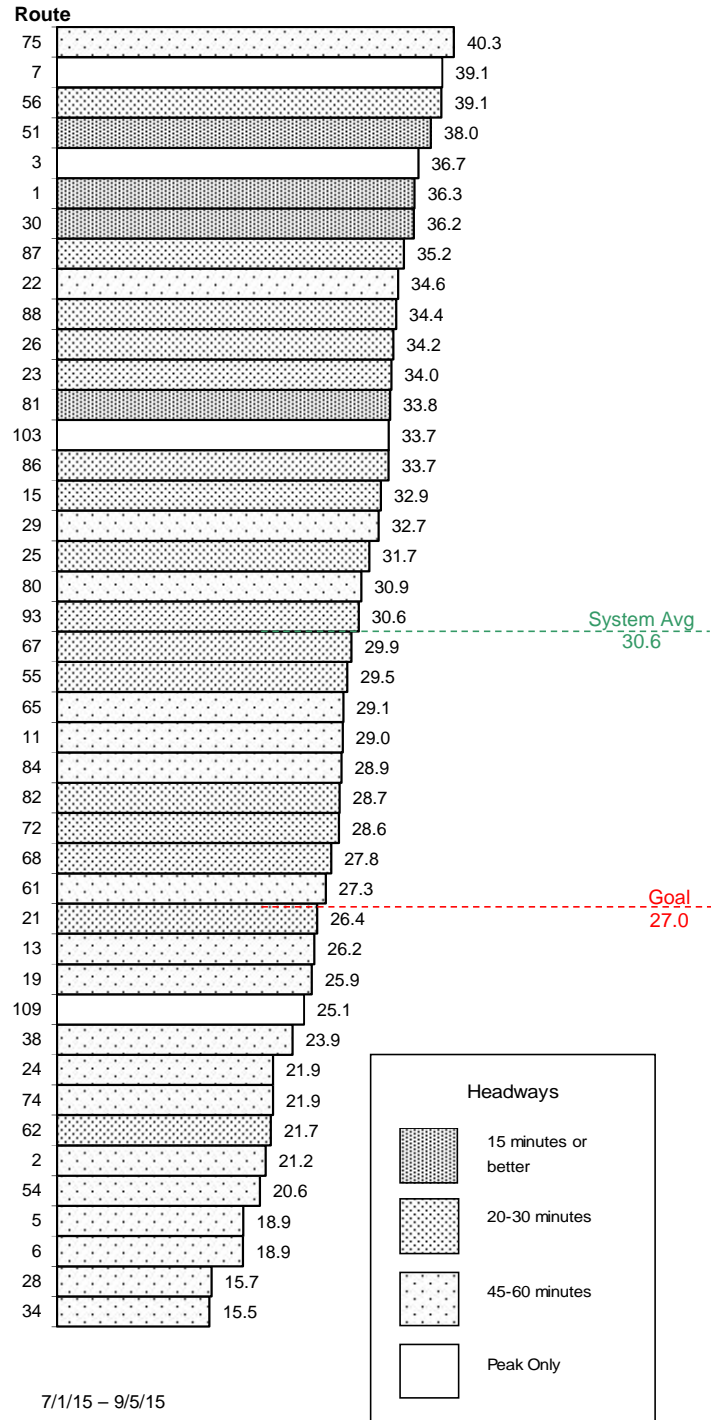
Minimum productivity standards for regular weekday bus routes are **27.0 boardings per service hour**. Low-productivity routes are reviewed by staff for possible corrective action. Newly created routes that do not meet minimum productivity standards within two years are subject to automatic elimination pursuant to RT's route sunset process.

Routes Below Standard

Route	Name	Quarters
5	Meadowview/Valley Hi	3 qtrs.
6	Land Park	13 qtrs.
28	Fair Oaks/Butterfield	13 qtrs.
34	McKinley	13 qtrs.
38	P/Q Streets	10 qtrs.
54	Center Parkway	2 qtr.
62	Freeport	2 qtr.
74	International	13 qtrs.
109	Hazel Express	1 qtr.
2	Riverside	1 qtr.
13	Northgate	1 qtr.
19	Rio Linda	1 qtr.
21	Sunrise	1 qtr.
24	Madison-Greenback	1 qtr.

Notes:

- Note that productivity standards alone do not determine which routes are considered for modification. Consideration of corrective action is based on multiple factors, of which productivity is one.
- Routes 6, 34, 38 and 74 have been consistently below productivity standards.
- Route 28 continues to remain below standard; however, total ridership on the route has been trending positively since service changes were implemented in April 2015.
- Routes 2, 13, 19, 21 and 24 may be below standard due to the modified reporting period. Typical third quarter data includes the month of September, which generally shows increases in ridership relative to July and August. Data may be affected by some degree of seasonality.

Boardings Per Service Hour


Performance Monitoring
Saturday

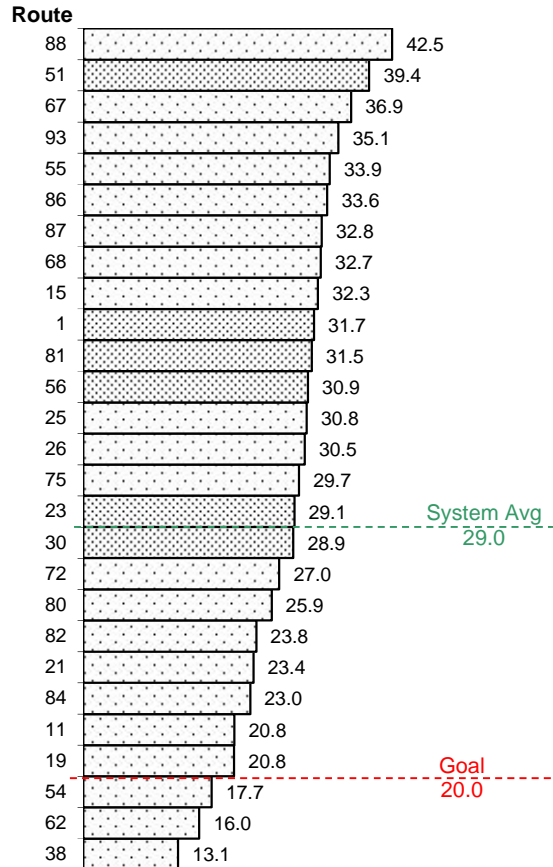
Minimum productivity standards for Saturday bus routes are **20.0 boardings per service hour**. Low-productivity routes are reviewed by staff for possible corrective action. Newly created routes that do not meet minimum productivity standards within two years are subject to automatic elimination pursuant to RT's route sunset process.

Routes Below Standard

Route	Name	Quarters
38	P/Q Streets	13 qtrs.
62	Freeport	13 qtrs.
54	Center Parkway	2 qtr.

Notes:

- Routes 38 and 62 have been consistently below productivity standards.

Boardings Per Service Hour


7/1/15 – 9/5/15

Performance Monitoring
Sunday/Holiday

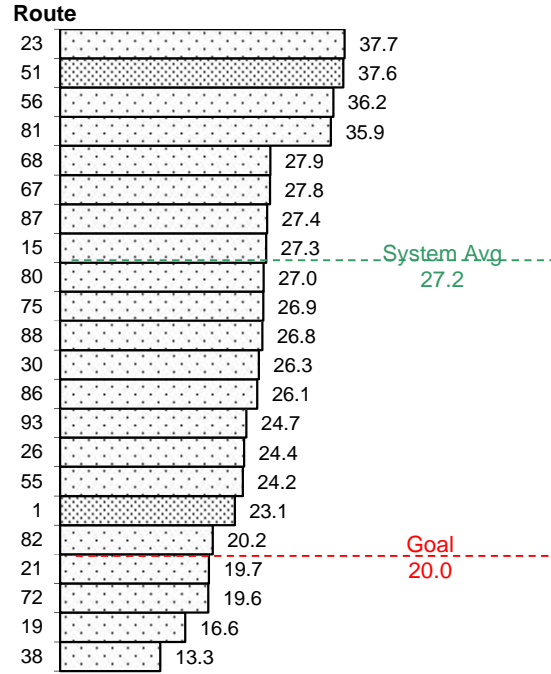
Minimum productivity standards for Sunday/Holiday bus routes are **20.0 boardings per service hour**. Low-productivity routes are reviewed by staff for possible corrective action. Newly created routes that do not meet minimum productivity standards within two years are subject to automatic elimination pursuant to RT's route sunset process.

Routes Below Standard

Route	Name	Quarters
19	Rio Linda	6 qtr.
38	P/Q Streets	13 qtrs.
21	Sunrise	1 qtr.
72	Rosemont-Lincoln Village	1 qtr.

Notes:

- Route 38 has been consistently below productivity standards.
- Routes 21 and 72 may be below standard due to the modified reporting period. Typical third quarter data includes the month of September, which generally shows increases in ridership relative to July and August. Data may be affected by some degree of seasonality.

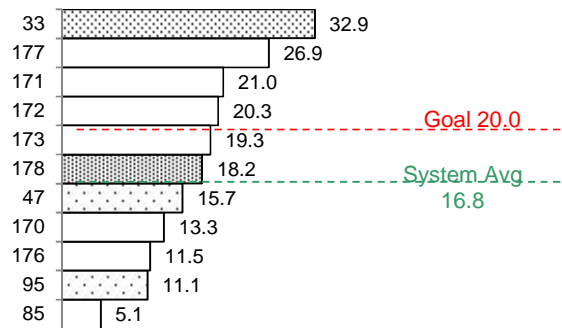
Boardings Per Service Hour


7/1/15 – 9/5/15

Performance Monitoring
Community Bus Service

Minimum productivity standards for CBS routes are **20.0 boardings per service hour**. CBS routes supported by a third-party subsidy are considered to be meeting standards if the net operating cost does not exceed **\$7.75 per passenger**. Low-productivity routes are reviewed by staff for possible corrective action. Newly created routes that do not meet minimum productivity standards within two years are subject to automatic elimination pursuant to RT's route sunset process.

Route	Name	Contract	Quarters
47	Phoenix Park	No	6 qtr.
85	McClellan Shuttle	Yes	13 qtrs.
95	Citrus Hts. - Antelope Rd	No	12 qtrs.
170	Natomas Flyer Eastside	Yes	7 qtrs.
171	Natomas Flyer Westside	Yes	5 qtr.
173	Natomas Flyer Square	Yes	6 qtr.
176	Cordovan - Anatolia	Yes	13 qtrs.
178	Granite Shuttle	Yes	13 qtrs.

Boardings Per Revenue Hour
Routes


7/1/15 – 9/5/15

Notes:

- Routes 85, 170-173, and 176-178 are operated according to agreements with outside parties.
- Based on level-of-service commitments to the City of Citrus Heights and lack of superior cost-constrained alternatives, Route 95 was exempted from the sunset process in December 2014. Minor changes to Route 95 were implemented in April 2015.

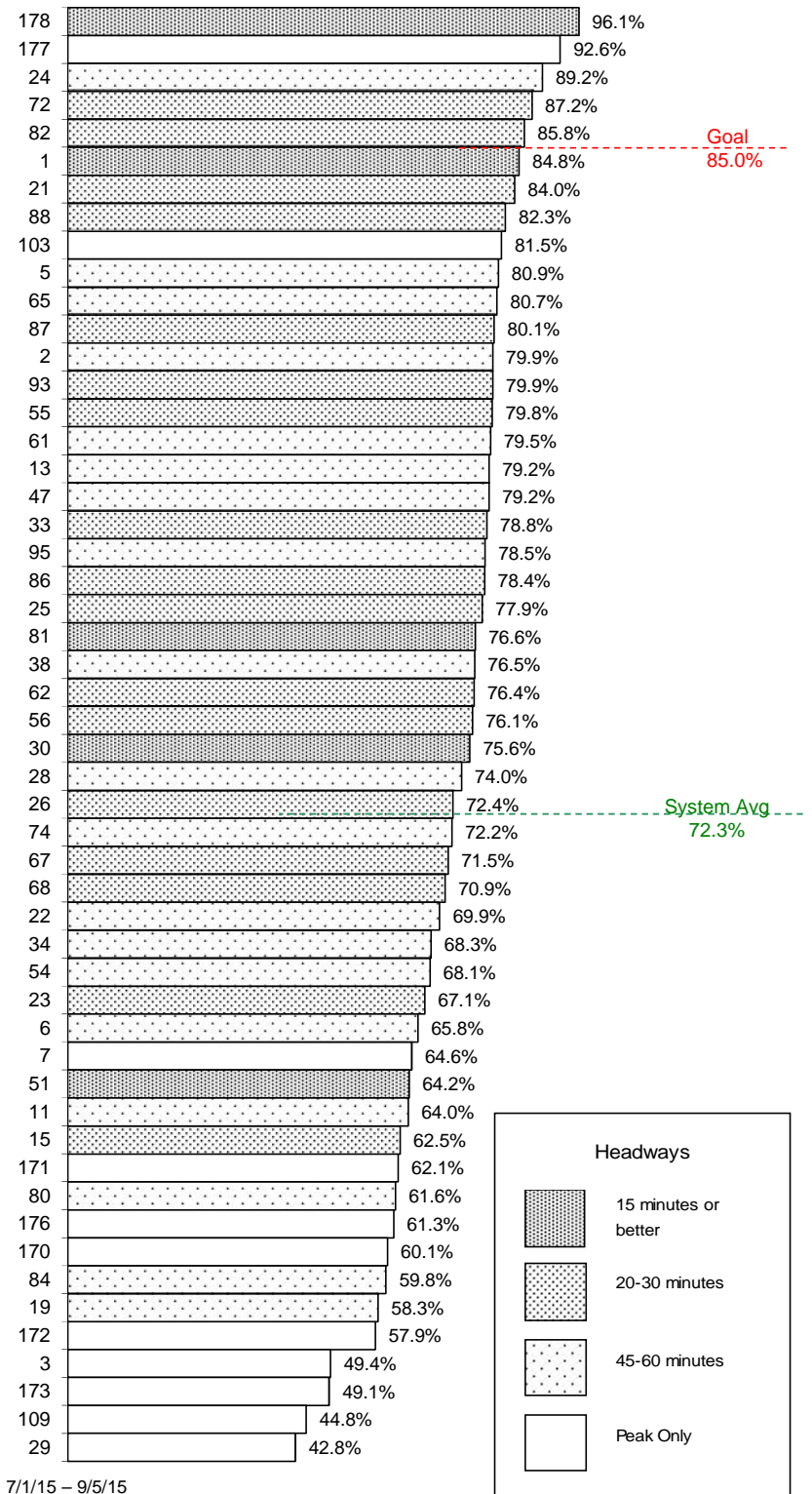
Quarterly Ridership Report
 Period Ending September 5, 2015

Weekday Bus and CBS Routes

On-time performance is measured at time points, which are major stops shown on the public schedule (usually 4-6 per route).

A bus is considered on-time if it leaves its time point 0-4:59 minutes late. On-time performance indicates the percent of time points where the bus was on-time according to this definition.

Changes to reported on-time performance may be due to a recent modification made with reporting late trips. Prior to July 1, 2015, a bus was considered on-time if it left its time point 0-5:59 minutes late; however, that time frame did not match the on-time definition per RT's Service Standards policy, which is now accurately reflected as 0-4:59 minutes.

On-Time Performance


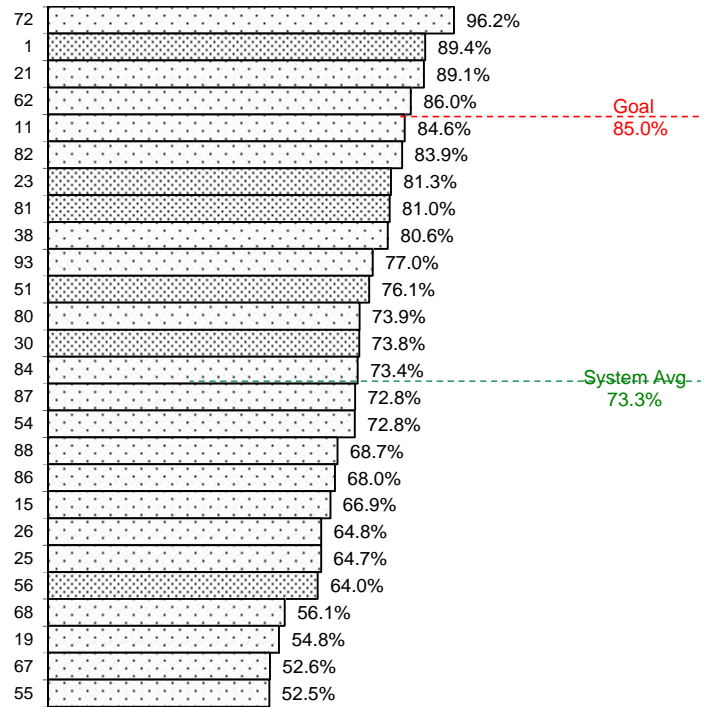
7/1/15 – 9/5/15

Quarterly Ridership Report
 Period Ending September 5, 2015

Saturday Bus Routes

On-time performance is measured at time points, which are major stops shown on the public schedule (usually 4-6 per route).

A bus is considered on-time if it leaves its time point 0-4:59 minutes late. On-time performance indicates the percent of time points where the bus was on-time according to this definition.

On-Time Performance


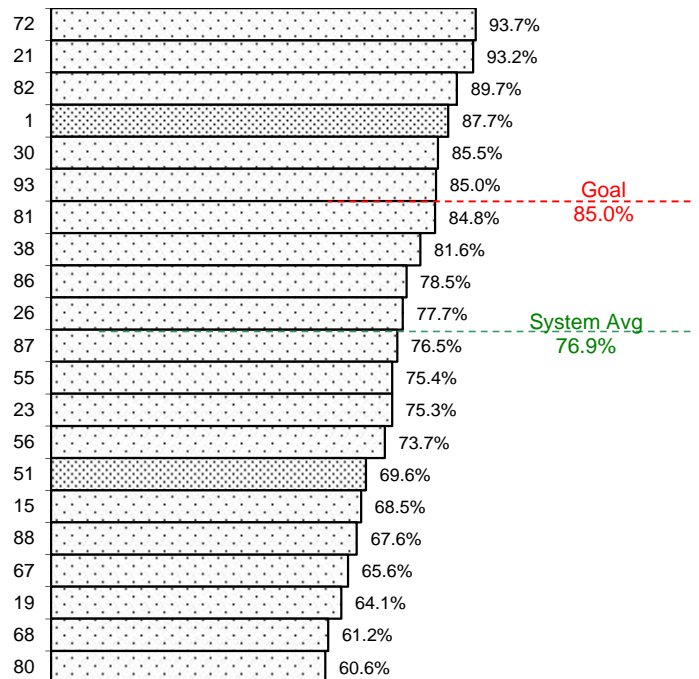
7/1/15 – 9/5/15

Quarterly Ridership Report
Period Ending September 5, 2015

Sunday/Holiday Bus Routes

On-time performance is measured at time points, which are major stops along the route and shown on the public schedule (usually 4-6 per route).

A bus is considered on-time if it leaves its time point 0-4:59 minutes late. On-time performance indicates the percent of time points where the bus was on-time according to this definition.

On-Time Performance


7/1/15 – 9/5/15

Light Rail On-Time Departures

Light rail on-time performance is measured at trip start points. A one-way trip is considered on-time if it departs 0-5 minutes late. The goal is 97.0 percent on-time departures.

Blue Line on-time performance decreased to 97.6 percent. Gold Line was slightly higher at 98.6 percent. Green Line improved to 98.6 percent.

	Blue	Gold	Green
2014-Q1	98.9%	99.1%	98.9%
2014-Q2	98.3%	99.1%	97.7%
2014-Q3	98.8%	99.1%	99.6%
2014-Q4	98.2%	98.7%	99.2%
2015-Q1	98.0%	98.6%	97.9%
2015-Q2	97.8%	98.3%	95.9%
2015-Q3	97.6%	98.6%	98.6%



Weekday Bus Ridership

7/1/15 - 9/5/15

Route	Name	Boardings Per Day	Trips Per Day	Serv Hrs Per Day	Rev Hrs Per Day	(Goal = 27)	Full Cost Per Psgr	Net Cost Per Psgr	Farebox Recovery	Below Standards
						Psg'r Per Serv Hr				
75	Mather Field	179	14	4.4	10.0	40.3	\$8.10	\$7.02	13%	
7	Pocket Express	133	6	3.4	4.1	39.1	\$4.45	\$3.37	24%	
56	Pocket-C.R.C.	1,568	66	40.2	50.6	39.1	\$4.65	\$3.58	23%	
51	Broadway-Stockton	4,012	143	105.6	132.2	38.0	\$4.75	\$3.68	23%	
3	Riverside Express	186	8	5.1	5.3	36.7	\$4.14	\$3.06	26%	
1	Greenback	2,420	121	66.6	100.1	36.3	\$5.97	\$4.89	18%	
30	J Street (DASH)	1,946	116	53.7	84.5	36.2	\$6.27	\$5.19	17%	
87	Howe	998	55	28.3	41.5	35.2	\$6.00	\$4.92	18%	
22	Arden	320	28	9.2	13.4	34.7	\$6.03	\$4.95	18%	
88	West El Camino	999	59	29.0	39.1	34.4	\$5.64	\$4.56	19%	
26	Fulton	1,258	52	36.8	51.4	34.2	\$5.89	\$4.81	18%	
23	El Camino	2,184	64	64.3	83.3	34.0	\$5.50	\$4.42	20%	
81	Florin-65th Street	2,702	117	79.9	103.4	33.8	\$5.52	\$4.44	20%	
103	Auburn Blvd	99	8	2.9	4.2	33.7	\$6.18	\$5.10	17%	
86	San Juan-Silver Eagle	1,393	61	41.4	57.1	33.7	\$5.92	\$4.84	18%	
15	Rio Linda Blvd-O Street	1,241	56	37.7	53.2	32.9	\$6.19	\$5.11	17%	
29	Arden-California Avenue	111	4	3.4	3.8	32.7	\$4.89	\$3.82	22%	
25	Marconi	1,150	55	36.3	53.6	31.7	\$6.72	\$5.65	16%	
80	Watt-Elkhorn	1,093	32	35.4	40.8	30.9	\$5.38	\$4.31	20%	
93	Hillsdale	975	55	31.8	48.2	30.6	\$7.13	\$6.05	15%	
67	Franklin	1,542	58	51.6	64.3	29.9	\$6.01	\$4.93	18%	
55	Scottsdale	881	52	29.9	38.2	29.5	\$6.26	\$5.18	17%	
65	Franklin South	323	28	11.1	26.9	29.1	\$12.01	\$10.93	9%	
11	Truxel Road	705	43	24.3	31.5	29.0	\$6.45	\$5.37	17%	
84	Watt Avenue-North Highlands	932	28	32.2	38.2	28.9	\$5.91	\$4.83	18%	
82	Howe-65th Street	1,689	66	58.8	80.3	28.7	\$6.86	\$5.78	16%	
72	Rosemont-Lincoln Village	803	59	28.0	42.1	28.6	\$7.58	\$6.50	14%	
68	44th Street	1,451	58	52.1	66.0	27.9	\$6.56	\$5.48	16%	
61	Fruitridge	582	31	21.3	30.2	27.3	\$7.49	\$6.41	14%	
21	Sunrise	1,407	70	53.3	67.7	26.4	\$6.94	\$5.86	16%	X
13	Northgate	398	31	15.2	20.0	26.2	\$7.23	\$6.16	15%	X
19	Rio Linda	786	29	30.4	40.6	25.9	\$7.45	\$6.37	14%	X
109	Hazel Express	94	4	3.7	3.7	25.1	\$5.75	\$4.67	19%	X
38	P/Q Streets	499	29	20.8	28.0	24.0	\$8.10	\$7.02	13%	X
24	Madison-Greenback	157	27	7.1	13.0	21.9	\$11.97	\$10.89	9%	X
74	International	234	29	10.7	17.9	21.9	\$11.07	\$9.99	10%	X
62	Freeport	1,054	60	48.5	61.3	21.7	\$8.39	\$7.31	13%	X
2	Riverside	367	26	17.3	25.3	21.2	\$9.97	\$8.89	11%	X
54	Center Parkway	379	31	18.4	26.2	20.6	\$9.98	\$8.91	11%	X
5	Meadowview-Valley Hi	215	31	11.4	15.1	18.9	\$10.15	\$9.07	11%	X
6	Land Park	332	27	17.6	25.0	18.9	\$10.83	\$9.75	10%	X
28	Fair Oaks-Folsom	367	32	23.4	30.7	15.7	\$12.08	\$11.00	9%	X
34	McKinley	253	27	16.4	26.3	15.5	\$14.96	\$13.88	7%	X
TOTAL		40,415	1,996	1,319	1,798	30.6				



Saturday Bus Ridership

7/1/15 - 9/5/15

Route	Name	Boardings	Trips	Serv Hrs	Rev Hrs	(Goal = 20) Psgr Per	Full Cost	Net Cost	Farebox	Below
		Per Day	Per Day	Per Day	Per Day	Serv Hr				
88	West El Camino	405	26	9.5	14.9	42.5	\$5.30	\$4.22	20%	
51	Broadway-Stockton	1,838	68	46.7	64.1	39.4	\$5.03	\$3.95	21%	
67	Franklin	802	28	21.7	27.8	36.9	\$5.00	\$3.92	22%	
93	Hillsdale	416	22	11.9	14.9	35.1	\$5.17	\$4.09	21%	
55	Scottsdale	277	19	8.2	12.0	33.9	\$6.23	\$5.16	17%	
86	San Juan-Silver Eagle	565	28	16.8	22.0	33.6	\$5.62	\$4.54	19%	
87	Howe	404	29	12.3	14.4	32.8	\$5.13	\$4.05	21%	
68	44th Street	722	28	22.1	28.1	32.7	\$5.62	\$4.54	19%	
15	Rio Linda Blvd-O Street	613	29	19.0	22.3	32.3	\$5.25	\$4.17	21%	
1	Greenback	1,063	66	33.5	45.4	31.8	\$6.17	\$5.09	18%	
81	Florin-65th Street	1,447	60	46.0	59.0	31.5	\$5.88	\$4.80	18%	
56	Pocket-C.R.C.	865	55	28.0	37.1	30.9	\$6.19	\$5.11	17%	
25	Marconi	495	21	16.1	20.5	30.8	\$5.98	\$4.90	18%	
26	Fulton	331	21	10.9	14.3	30.5	\$6.21	\$5.14	17%	
75	Mather Field	104	11	3.5	8.3	29.7	\$11.50	\$10.42	9%	
23	El Camino	1,576	53	54.2	63.9	29.1	\$5.85	\$4.77	18%	
30	J Street (DASH)	641	53	22.2	28.9	28.9	\$6.50	\$5.42	17%	
72	Rosemont-Lincoln Village	290	23	10.7	14.1	27.0	\$7.00	\$5.92	15%	
80	Watt-Elkhorn	776	29	30.0	36.5	25.9	\$6.77	\$5.70	16%	
82	Howe-65th Street	578	31	24.3	30.7	23.8	\$7.66	\$6.58	14%	
21	Sunrise	665	42	28.4	45.6	23.4	\$9.91	\$8.83	11%	
84	Watt Avenue-North Highlands	483	20	21.0	24.8	23.0	\$7.42	\$6.34	15%	
11	Truxel Road	318	26	15.3	21.3	20.8	\$9.65	\$8.57	11%	
19	Rio Linda	369	20	17.8	21.2	20.8	\$8.30	\$7.22	13%	
54	Center Parkway	148	24	8.4	12.7	17.7	\$12.34	\$11.26	9%	X
62	Freeport	370	29	23.2	32.8	16.0	\$12.78	\$11.70	8%	X
38	P/Q Streets	211	25	16.2	19.3	13.1	\$13.19	\$12.11	8%	X
TOTAL		16,771	886	577	757	29.0				

Costing factors and average fare assumptions from FY 2016 operating budget



Sun/Hol Bus Ridership

7/1/15 - 9/5/15

Route	Name	Boardings	Trips	Serv Hrs	Rev Hrs	(Goal = 20) Psgr Per	Full Cost	Net Cost	Farebox	Below
		Per Day	Per Day	Per Day	Per Day	Serv Hr				
23	El Camino	982	28	26.0	39.3	37.7	\$5.78	\$4.70	19%	
51	Broadway-Stockton	1,288	50	34.3	41.9	37.6	\$4.69	\$3.61	23%	
56	Pocket-C.R.C.	497	27	13.7	19.0	36.2	\$5.52	\$4.44	20%	
81	Florin-65th Street	798	29	22.2	28.5	35.9	\$5.15	\$4.07	21%	
68	44th Street	615	28	22.1	28.1	27.9	\$6.60	\$5.52	16%	
67	Franklin	605	28	21.7	27.8	27.8	\$6.62	\$5.54	16%	
87	Howe	245	21	8.9	10.4	27.4	\$6.15	\$5.07	18%	
15	Rio Linda Blvd-O Street	484	26	17.7	22.7	27.3	\$6.76	\$5.68	16%	
80	Watt-Elkhorn	563	23	20.9	24.5	27.0	\$6.27	\$5.19	17%	
75	Mather Field	94	11	3.5	7.8	26.9	\$11.93	\$10.86	9%	
88	West El Camino	255	26	9.5	12.9	26.8	\$7.30	\$6.22	15%	
30	J Street (DASH)	311	28	11.8	14.8	26.3	\$6.86	\$5.78	16%	
86	San Juan-Silver Eagle	329	21	12.6	15.9	26.1	\$6.98	\$5.90	15%	
93	Hillsdale	293	22	11.9	14.8	24.7	\$7.27	\$6.19	15%	
26	Fulton	228	20	9.3	11.1	24.4	\$7.01	\$5.93	15%	
55	Scottsdale	167	16	6.9	10.9	24.2	\$9.40	\$8.32	11%	
1	Greenback	707	63	30.6	44.3	23.1	\$9.04	\$7.96	12%	
82	Howe-65th Street	433	28	21.4	27.5	20.2	\$9.15	\$8.08	12%	
21	Sunrise	428	30	21.7	32.1	19.7	\$10.83	\$9.75	10%	X
72	Rosemont-Lincoln Village	202	22	10.3	13.4	19.6	\$9.62	\$8.54	11%	X
19	Rio Linda	295	20	17.8	20.3	16.6	\$9.95	\$8.87	11%	X
38	P/Q Streets	163	20	12.3	14.9	13.3	\$13.18	\$12.10	8%	X
TOTAL		9,980	587	367	483	27.2				

Costing factors and average fare assumptions from FY 2016 operating budget

Quarterly Ridership Report
 Period Ending September 5, 2015

CBS Ridership

7/1/15 - 9/5/15

Route	Name	Boardings	Trips	Serv Hrs	Rev Hrs	Psg Per	Full Cost	(Goal < \$7.75) Net Cost	Farebox	Contract	Below
		Per Day	Per Day	Per Day	Per Day	Serv Hr	Per Psgr	Per Psgr	Recovery	Service	Standards
173	Square Flyer	25	2	1.6	1.6	19.3	\$8.98	\$3.14	65%	X	
177	Rancho Cordovan	160	58	5.8	7.1	26.9	\$7.90	\$3.97	50%	X	
171	Westside Flyer	94	6	4.5	4.9	21.0	\$9.07	\$4.47	51%	X	
172	Central Flyer	132	8	6.3	7.3	20.3	\$9.77	\$5.13	47%	X	
33	Dos Rios	231	60	7.5	11.5	32.9	\$8.05	\$6.97	13%		
170	Eastside Flyer	124	8	6.5	7.0	13.3	\$14.11	\$9.15	35%	X	X
176	Cordovan - Anatolia	33	18	4.5	6.5	11.5	\$21.87	\$10.06	54%	X	X
178	Granite Shuttle	97	41	6.8	11.6	18.2	\$16.13	\$12.06	25%	X	X
47	Phoenix Park	134	24	11.2	13.5	15.7	\$13.36	\$12.28	8%		X
95	Citrus Heights-Antelope Rd	84	23	7.7	10.8	11.1	\$21.86	\$20.78	5%		X
85	McClellan Shuttle	28	14	5.5	6.5	5.1	\$40.21	\$39.13	3%	X	X
TOTAL		1,142	262	68	88	16.8					

Costing factors and average fare assumptions from FY 2016 operating budget
 Routes 85, 95 170, 171, 172, 173, 176, 177, and 178 are operated according to service agreements
 Contract revenue has been treated as fare revenue, reducing net cost and increasing fare box recovery
 List excludes CityRide dial-a-ride service launched 10/29/12


Average Daily Ridership by Time Period

FY15 - 7/1/15 - 9/5/15



BLUE LINE - TOTAL	AM Peak (6:00 - 9:00a)		Midday (9:01a - 3:29p)		PM Peak (3:30 - 6:00p)		Other Weekday (<6:00a or >6:00p)		Total Weekday	
	On	Off	On	Off	On	Off	On	Off	On	Off
WATT / I-80	445	330	625	567	225	406	390	345	1,684	1,648
WATT I-80 WEST	57	0	18	23	0	139	4	2	80	165
ROSEVILLE RD	352	13	115	178	10	535	47	49	523	775
MARCONI / ARCADE	211	117	263	282	112	361	122	123	707	883
SWANSTON	89	29	85	76	28	179	46	47	249	330
ROYAL OAKS	107	67	250	215	117	121	135	136	610	538
ARDEN / DEL PASO	179	134	457	403	182	357	225	196	1,043	1,090
GLOBE AVENUE	59	30	99	77	53	106	55	72	265	286
ALKALI FLAT / LA VALENT	157	178	475	471	139	144	133	169	904	962
12TH & I STREETS	45	251	198	168	364	49	84	55	691	523
CATHEDRAL SQUARE	84	355	294	369	355	76	131	78	864	878
7TH / 9TH & K	190	199	473	379	422	153	206	142	1,291	873
7TH / 8TH & CAPITOL	58	437	229	190	415	77	118	62	820	765
8TH & O STREETS	76	386	130	155	443	54	49	53	697	648
ARCHIVES PLAZA	23	246	137	125	350	32	38	21	549	424
13TH STREET	102	126	199	210	115	46	101	59	517	441
16TH STREET	188	448	639	625	486	243	425	255	1,737	1,571
BROADWAY	138	160	283	292	244	359	161	127	826	937
4TH/WAYNE HULTGREN	98	76	191	99	73	105	78	57	441	336
CITY COLLEGE	62	138	304	276	161	90	93	86	621	590
FRUITRIDGE	87	22	181	199	84	93	93	151	445	466
47TH AVE	233	47	197	200	80	247	92	141	603	634
FLORIN	373	136	391	531	178	346	164	305	1,106	1,318
MEADOWVIEW	710	199	550	670	242	563	268	528	1,770	1,961
	4,123	4,123	6,780	6,780	4,880	4,880	3,259	3,259	19,041	19,041

Average Daily Ridership by Time Period

FY15 - 7/1/15 - 9/5/15



GOLD LINE - TOTAL	AM Peak (6:00 - 9:00a)		Midday (9:01a - 3:29p)		PM Peak (3:30 - 6:00p)		Other Weekday (<6:00a or >6:00p)		Total Weekday	
	On	Off	On	Off	On	Off	On	Off	On	Off
SAC VALLEY	52	149	147	141	123	67	87	68	410	424
7TH & I	33	0	173	10	213	0	44	0	464	10
8TH & H	0	146	14	113	3	21	5	22	22	301
7TH & K	98	0	270	19	180	20	131	3	680	41
8TH & K	28	206	31	376	10	104	3	126	71	812
7TH / 8TH & CAPITOL	66	280	208	179	246	43	57	56	577	558
8TH & O STREETS	121	336	179	144	395	27	65	83	760	591
ARCHIVES PLAZA	64	312	218	189	437	41	76	47	795	590
13TH STREET	84	92	212	240	91	56	70	75	455	464
16TH STREET	348	393	594	648	298	351	274	394	1,514	1,784
23RD STREET	131	154	236	177	111	133	141	51	618	515
29TH STREET	292	310	832	800	293	202	263	168	1,679	1,481
39TH STREET	40	44	93	88	50	70	66	48	249	251
48TH STREET	47	35	66	68	42	46	42	55	197	204
59TH STREET	51	39	68	58	30	98	29	47	177	242
65TH STREET	444	257	598	543	223	333	279	243	1,545	1,376
POWER INN ROAD	160	140	231	232	94	176	134	110	619	657
COLLEGE GREENS	200	113	369	385	149	121	165	101	883	719
WATT / MANLOVE	391	105	277	416	96	471	180	309	943	1,301
STARFIRE	112	30	156	114	32	97	114	121	413	363
TIBER	78	57	142	119	46	68	65	51	331	296
BUTTERFIELD	149	201	265	173	180	153	73	174	668	702
MATHER FIELD / MILLS	371	267	674	559	192	398	284	417	1,521	1,641
ZINFANDEL	177	176	316	435	190	245	288	200	970	1,057
CORDOVA TOWN CTR	124	59	212	220	118	127	82	62	535	469
SUNRISE	242	124	252	189	129	193	127	120	750	626
HAZEL	54	51	25	75	39	58	15	33	133	216
IRON POINT	116	66	107	254	68	140	20	22	311	482
GLENN	79	54	37	30	13	106	26	22	155	211
HIST FOLSOM	134	83	142	150	84	211	35	11	395	455
	4,285	4,281	7,144	7,144	4,174	4,174	3,239	3,239	18,842	18,839

Quarterly Ridership Report
 Period Ending September 5, 2015

Average Daily Ridership by Time Period


FY15 - 7/1/15 - 9/5/15

GREEN LINE - TOTAL	AM Peak (6:00 - 9:00a)		Midday (9:01a - 3:29p)		PM Peak (3:30 - 6:00p)		Other Weekday (<6:00a or >6:00p)		Total Weekday	
	On	Off	On	Off	On	Off	On	Off	On	Off
RICHARDS BLVD	40	23	78	62	37	43	11	24	166	152
7TH & I	4	5	9	27	3	10	2	0	18	43
7TH & K	4	13	11	28	8	14	3	4	26	59
7TH / 8TH & CAPITOL	4	8	12	11	13	5	2	2	31	27
8TH & O STREETS	5	6	15	13	5	8	2	1	28	28
ARCHIVES PLAZA	7	11	26	15	3	3	2	0	38	28
13TH STREET	13	19	30	41	22	25	8	13	72	98
8TH & K	10	5	24	19	19	10	6	0	59	34
8TH & H	8	3	17	8	10	3	10	2	45	16
	94	94	223	223	119	119	47	47	484	484