



Ridership Report

Current Month & Fiscal YTD Summary

January 2019					
	Average Daily Boardings			Monthly	YTD
	Weekday	Saturday	Sunday		
Days	21	4	6	31	
Bus	34,044	11,369	7,098	813,453	5,812,472
Full-Size Bus	32,279	11,369	7,098	765,923	
Community Bus	978			20,538	
SmaRT Ride	461			9,671	
Folsom Service	326			6,836	
Special Service*				10,485	
Light Rail	35,860	16,400	11,400	890,563	6,185,385
Blue Line	18,800	7,600	5,400	457,600	
Gold Line	16,700	8,800	6,000	421,900	
Green Line	360			7,560	
Special Service*				3,503	
System Total	69,904	27,769	18,498	1,704,016	11,997,857

January 2019				
KPI Comparison - Average Weekday Boardings				
	Actual	KPI Goal	Difference	Percent Difference
Bus Avg Weekday	34,044	34,751	(707)	-2.0%
Rail Avg Weekday	35,860	33,333	2,527	7.6%
Monthly Total	1,704,016	1,617,924	86,092	5.3%
Total YTD	11,997,857	11,584,924	412,933	3.6%

January 2018					
	Average Daily Boardings			Monthly	YTD
	Weekday	Saturday	Sunday		
Days	21	4	6	31	
Bus	36,373	12,070	7,301	860,865	5,987,951
Full-Size Bus	35,517	12,070	7,301		
Community Bus	855				
Special Service*				4,956	
Light Rail	36,000	13,400	9,000	879,085	6,388,482
Blue Line	18,300	8,200	5,400		
Gold Line	17,300	5,200	3,600		
Green Line	400				
Golden 1 Service				15,485	
System Total	72,373	25,470	16,301	1,739,950	12,376,433

% Change FY 2019/2018					
	Average Daily Boardings			Monthly	YTD
	Weekday	Saturday	Sunday		
Total Bus	-6.4%	-5.8%	-2.8%	-5.5%	-2.9%
Light Rail	-0.4%	22.4%	26.7%	1.3%	-3.2%
System Total	-3.4%	9.0%	13.5%	-2.1%	-3.1%

Route Level Ridership Comparison (Fixed Route Bus)

Weekday Route Comparison

Route	Jan 2019	Jan 2018	Difference	% Change
1	1,562	1,917	(355)	-19%
2	429	402	27	7%
3	191	190	1	0%
5	192	186	6	3%
6	300	325	(25)	-8%
7	123	123	1	1%
11	589	618	(29)	-5%
13	240	321	(82)	-25%
15	1,042	1,040	2	0%
19	581	588	(8)	-1%
21	934	997	(63)	-6%
22	232	243	(11)	-4%
23	1,469	1,576	(107)	-7%
24	145	146	(1)	-1%
25	947	883	64	7%
26	998	1,011	(14)	-1%
28	311	315	(4)	-1%
29	113	125	(13)	-10%
30	1,723	1,705	18	1%
33	217	229	(12)	-5%
34	233	261	(27)	-11%
38	376	370	6	2%
47	100	122	(22)	-18%
51	2,939	3,021	(82)	-3%
54	244	272	(28)	-10%
55	644	626	18	3%
56	956	955	1	0%
61	489	483	6	1%
62	875	998	(123)	-12%
65	353	338	15	4%
67	1,036	1,090	(55)	-5%
68	1,061	1,086	(25)	-2%
72	982	906	75	8%
74	171	170	1	1%
75	159	141	18	13%
80	917	864	53	6%
81	2,389	2,307	82	4%
82	1,413	1,488	(75)	-5%
84	687	730	(43)	-6%
85	32	16	16	101%
86	1,039	1,019	20	2%
87	1,037	1,010	27	3%
88	742	726	16	2%
93	761	795	(34)	-4%
95	73	51	22	43%
103	69	83	(14)	-16%
109	97	96	1	1%
170	196	91	105	116%
171	59	73	(13)	-18%
172	137	109	28	26%
175	28	23	4	18%
176	32	31	1	4%
177	105	103	3	2%
205	32	23	9	40%
206	28	28	1	2%
210	38	42	(4)	-10%
211	87	72	15	21%
212	85	46	40	87%
214	30	12	17	144%
227	19	15	3	22%
228	33	15	18	120%
246	40	34	6	18%
248	24	12	12	100%
252	31	22	9	42%
255	43	46	(3)	-7%

Saturday Route Comparison

Route	Jan 2019	Jan 2018	Difference	% Change
1	774	732	42	6%
11	265	234	31	13%
15	494	478	16	3%
19	294	290	4	2%
21	497	502	(5)	-1%
23	1,096	1,092	3	0%
25	361	336	25	8%
26	294	231	63	27%
30	522	477	45	9%
38	174	154	20	13%
51	1,547	1,434	113	8%
54	99	114	(14)	-13%
55	215	224	(9)	-4%
56	514	441	73	16%
62	322	315	7	2%
67	577	546	31	6%
68	531	509	21	4%
72	227	207	19	9%
75	123	104	19	19%
80	602	586	15	3%
81	1,088	1,060	28	3%
82	512	464	49	11%
84	352	351	1	0%
86	353	344	9	3%
87	362	304	58	19%
88	254	242	12	5%
93	293	278	15	5%

Sunday Route Comparison

Route	Jan 2019	Jan 2018	Difference	% Change
1	573	561	13	2%
15	394	375	19	5%
19	224	217	7	3%
21	324	330	(6)	-2%
23	714	735	(21)	-3%
26	190	187	3	2%
30	243	216	27	12%
38	130	118	12	10%
51	1,002	939	63	7%
55	146	147	(1)	-1%
56	303	272	31	11%
67	418	405	13	3%
68	442	417	26	6%
72	175	146	29	20%
75	99	88	11	12%
80	484	464	20	4%
81	627	626	1	0%
82	406	361	46	13%
86	238	228	10	5%
87	233	186	47	25%
88	228	211	16	8%
93	254	239	15	6%

Please note:

Route totals do not add up to monthly totals. Route by Route comparisons are only shown for routes that operated in each year. Additionally special service routes are not included on this page.

Average Weekday Boardings by Station by Line

Station Name	Jan19	Jan18	Difference	% Change
BLUE LINE - Total	18,800	18,300	500	2.73%
12TH & I STATION	473	461	13	2.73%
13TH STREET STATION	522	509	14	2.73%
16TH STREET STATION	1,623	1,580	43	2.73%
47TH AVENUE STATION	558	543	15	2.73%
4TH AVE/WAYNE HULTGREN STATION	553	538	15	2.73%
7TH & CAPITOL STATION	729	710	19	2.73%
8TH & CAPITOL STATION	393	383	10	2.73%
8TH & O STATION	771	751	21	2.73%
ALKALI FLAT/LA VALENTINA STA	695	676	18	2.73%
ARCHIVES PLAZA STATION	517	503	14	2.73%
ARDEN/DEL PASO STATION	793	772	21	2.73%
BROADWAY STATION	661	643	18	2.73%
CATHEDRAL SQUARE STATION	785	765	21	2.73%
CENTER PARKWAY STATION	267	259	7	2.73%
CITY COLLEGE STATION	922	897	25	2.73%
CRC STATION	1,321	1,286	35	2.73%
FLORIN STATION	902	878	24	2.73%
FRANKLIN STATION	708	689	19	2.73%
FRUITRIDGE STATION	454	442	12	2.73%
GLOBE AVENUE STATION	262	255	7	2.73%
MARCONI/ARCADE STATION	706	687	19	2.73%
MEADOWVIEW STATION	895	871	24	2.73%
ROSEVILLE ROAD STATION	643	626	17	2.73%
ROYAL OAKS STATION	398	388	11	2.73%
ST ROSE OF LIMA PARK STATION	604	588	16	2.73%
SWANSTON STATION	249	243	7	2.73%
Watt/I-80 Station	1,183	1,152	31	2.73%
WATT/I-80 WEST STATION	137	134	4	2.73%
GOLD LINE - Total	16,700	17,300	(600)	-3.47%
13TH STREET STATION	613	635	(22)	-3.47%
16TH STREET STATION	1,591	1,648	(57)	-3.47%
23RD STREET STATION	474	491	(17)	-3.47%
29TH STREET STATION	1,340	1,388	(48)	-3.47%
39TH STREET STATION	259	268	(9)	-3.47%
48TH STREET STATION	216	224	(8)	-3.47%
59TH STREET STATION	241	250	(9)	-3.47%
7TH & CAPITOL STATION	880	912	(32)	-3.47%
7TH & I/COUNTY CENTER STATION	335	347	(12)	-3.47%
8TH & CAPITOL STATION	53	54	(2)	-3.47%
8TH & H STATION	73	75	(3)	-3.47%
8TH & K STATION	75	78	(3)	-3.47%
8TH & O STATION	707	733	(25)	-3.47%
ARCHIVES PLAZA STATION	573	593	(21)	-3.47%
BUTTERFIELD STATION	501	519	(18)	-3.47%
COLLEGE GREENS STATION	598	619	(21)	-3.47%
CORDOVA TOWN CENTER STATION	438	453	(16)	-3.47%
GLENN STATION	240	248	(9)	-3.47%
HAZEL STATION	157	162	(6)	-3.47%

HISTORIC FOLSOM STATION	458	474	(16)	-3.47%
IRON POINT STATION	422	437	(15)	-3.47%
MATHER FIELD/MILLS STATION	1,242	1,287	(45)	-3.47%
POWER INN STATION	487	505	(17)	-3.47%
SACRAMENTO VALLEY STATION	475	492	(17)	-3.47%
STARFIRE STATION	279	289	(10)	-3.47%
SUNRISE STATION	763	790	(27)	-3.47%
TIBER STATION	268	278	(10)	-3.47%
UNIVERSITY/65TH STREET STATION	1,290	1,336	(46)	-3.47%
WATT/MANLOVE STATION	932	965	(33)	-3.47%
ZINFANDEL STATION	711	737	(26)	-3.47%
GREEN LINE - Total	360	400	(40)	-10.00%
13TH STREET STATION	83	92	(9)	-10.00%
7TH & CAPITOL STATION	23	26	(3)	-10.00%
7TH & I/COUNTY CENTER STATION	22	25	(2)	-10.00%
8TH & CAPITOL STATION	16	18	(2)	-10.00%
8TH & K STATION	44	49	(5)	-10.00%
8TH & O STATION	20	22	(2)	-10.00%
ARCHIVES PLAZA STATION	23	25	(3)	-10.00%
TOWNSHIP 9 STATION	128	143	(14)	-10.00%
All Stations	35,860	36,000	(140)	-0.39%

Average Weekday Alightings by Station by Line

Station Name	Jan19	Jan18	Difference	% Change
BLUE LINE - Rt#533	17,630	17,699	(69)	-0.39%
12TH & I STATION	471	473	(2)	-0.39%
13TH STREET STATION	514	516	(2)	-0.39%
16TH STREET STATION	1,570	1,576	(6)	-0.39%
47TH AVENUE STATION	540	542	(2)	-0.39%
4TH AVE/WAYNE HULTGREN STATION	424	426	(2)	-0.39%
7TH & CAPITOL STATION	606	609	(2)	-0.39%
8TH & CAPITOL STATION	464	466	(2)	-0.39%
8TH & O STATION	666	668	(3)	-0.39%
ALKALI FLAT/LA VALENTINA STATION	654	656	(3)	-0.39%
ARCHIVES PLAZA STATION	450	452	(2)	-0.39%
ARDEN/DEL PASO STATION	784	787	(3)	-0.39%
BROADWAY STATION	644	647	(3)	-0.39%
CATHEDRAL SQUARE STATION	778	781	(3)	-0.39%
CENTER PARKWAY STATION	203	203	(1)	-0.39%
CITY COLLEGE STATION	797	800	(3)	-0.39%
CRC STATION	1,310	1,315	(5)	-0.39%
FLORIN STATION	856	860	(3)	-0.39%
FRANKLIN STATION	641	644	(3)	-0.39%
FRUITRIDGE STATION	425	427	(2)	-0.39%
GLOBE AVENUE STATION	258	259	(1)	-0.39%
MARCONI/ARCADE STATION	641	643	(3)	-0.39%
MEADOWVIEW STATION	837	840	(3)	-0.39%
ROSEVILLE ROAD STATION	619	621	(2)	-0.39%
ROYAL OAKS STATION	379	380	(1)	-0.39%
ST ROSE OF LIMA PARK STATION	482	483	(2)	-0.39%
SWANSTON STATION	242	243	(1)	-0.39%
Watt/I-80 Station	1,176	1,181	(5)	-0.39%
WATT/I-80 WEST STATION	132	133	(1)	-0.39%
GOLD LINE - Rt#507	17,698	17,767	(69)	-0.39%
13TH STREET STATION	538	540	(2)	-0.39%
16TH STREET STATION	1,702	1,708	(7)	-0.39%
23RD STREET STATION	491	493	(2)	-0.39%
29TH STREET STATION	1,393	1,399	(5)	-0.39%
39TH STREET STATION	268	269	(1)	-0.39%
48TH STREET STATION	247	248	(1)	-0.39%
59TH STREET STATION	272	273	(1)	-0.39%
7TH & CAPITOL STATION	58	59	(0)	-0.39%
7TH & I/COUNTY CENTER STATION	26	26	(0)	-0.39%
8TH & CAPITOL STATION	680	683	(3)	-0.39%
8TH & H STATION	344	345	(1)	-0.39%
8TH & K STATION	672	675	(3)	-0.39%
8TH & O STATION	655	658	(3)	-0.39%
ARCHIVES PLAZA STATION	618	620	(2)	-0.39%
BUTTERFIELD STATION	515	517	(2)	-0.39%
COLLEGE GREENS STATION	609	612	(2)	-0.39%
CORDOVA TOWN CENTER STATION	433	435	(2)	-0.39%
GLENN STATION	242	243	(1)	-0.39%

HAZEL STATION	160	161	(1)	-0.39%
HISTORIC FOLSOM STATION	480	482	(2)	-0.39%
IRON POINT STATION	432	434	(2)	-0.39%
MATHER FIELD/MILLS STATION	1,257	1,262	(5)	-0.39%
POWER INN STATION	508	510	(2)	-0.39%
SACRAMENTO VALLEY STATION	434	435	(2)	-0.39%
SACRAMENTO VALLEY STATION	238	239	(1)	-0.39%
STARFIRE STATION	262	263	(1)	-0.39%
SUNRISE STATION	781	784	(3)	-0.39%
TIBER STATION	272	273	(1)	-0.39%
UNIVERSITY/65TH STREET STATION	1,364	1,370	(5)	-0.39%
WATT/MANLOVE STATION	977	980	(4)	-0.39%
ZINFANDEL STATION	764	767	(3)	-0.39%
GREEN LINE - Rt#519	532	534	(2)	-0.39%
13TH STREET STATION	171	172	(1)	-0.39%
7TH & CAPITOL STATION	43	43	(0)	-0.39%
7TH & I/COUNTY CENTER STATIO	59	59	(0)	-0.39%
8TH & CAPITOL STATION	11	11	(0)	-0.39%
8TH & K STATION	32	32	(0)	-0.39%
8TH & O STATION	26	26	(0)	-0.39%
ARCHIVES PLAZA STATION	27	27	(0)	-0.39%
TOWNSHIP 9 STATION	163	164	(1)	-0.39%
All Stations	35,860	36,000	(140)	-0.39%

Average Saturday Boardings by Station by Line

Station Name	Jan19	Jan18	Difference	% Change
BLUE LINE - Rt#533	7,600	8,200	(600)	-7.32%
12TH & I STATION	154	166	(12)	-7.32%
13TH STREET STATION	193	209	(15)	-7.32%
16TH STREET STATION	694	748	(55)	-7.32%
47TH AVENUE STATION	189	204	(15)	-7.32%
4TH AVE/WAYNE HULTGREN STATION	138	149	(11)	-7.32%
7TH & CAPITOL STATION	328	354	(26)	-7.32%
8TH & CAPITOL STATION	83	90	(7)	-7.32%
8TH & O STATION	107	115	(8)	-7.32%
ALKALI FLAT/LA VALENTINA STATION	374	403	(30)	-7.32%
ARCHIVES PLAZA STATION	77	83	(6)	-7.32%
ARDEN/DEL PASO STATION	453	489	(36)	-7.32%
BROADWAY STATION	354	382	(28)	-7.32%
CATHEDRAL SQUARE STATION	333	359	(26)	-7.32%
CENTER PARKWAY STATION	132	142	(10)	-7.32%
CITY COLLEGE STATION	215	232	(17)	-7.32%
CRC STATION	514	555	(41)	-7.32%
FLORIN STATION	417	450	(33)	-7.32%
FRANKLIN STATION	190	205	(15)	-7.32%
FRUITRIDGE STATION	214	231	(17)	-7.32%
GLOBE AVENUE STATION	119	129	(9)	-7.32%
MARCONI/ARCADE STATION	354	382	(28)	-7.32%
MEADOWVIEW STATION	393	424	(31)	-7.32%
ROSEVILLE ROAD STATION	104	113	(8)	-7.32%
ROYAL OAKS STATION	265	286	(21)	-7.32%
ST ROSE OF LIMA PARK STATION	354	382	(28)	-7.32%
SWANSTON STATION	115	124	(9)	-7.32%
Watt/I-80 Station	664	716	(52)	-7.32%
WATT/I-80 WEST STATION	22	24	(2)	-7.32%
GOLD LINE - Rt#507	8,800	5,200	3,600	69.23%
13TH STREET STATION	258	152	105	69.23%
16TH STREET STATION	843	498	345	69.23%
23RD STREET STATION	211	125	86	69.23%
29TH STREET STATION	641	379	262	69.23%
39TH STREET STATION	139	82	57	69.23%
48TH STREET STATION	118	70	48	69.23%
59TH STREET STATION	130	77	53	69.23%
7TH & CAPITOL STATION	420	248	172	69.23%
7TH & I/COUNTY CENTER STATION	132	78	54	69.23%
8TH & CAPITOL STATION	35	21	14	69.23%
8TH & H STATION	35	21	14	69.23%
8TH & K STATION	70	41	29	69.23%
8TH & O STATION	141	84	58	69.23%
ARCHIVES PLAZA STATION	114	67	47	69.23%
BUTTERFIELD STATION	177	105	72	69.23%
COLLEGE GREENS STATION	514	304	210	69.23%
CORDOVA TOWN CENTER STATION	257	152	105	69.23%
GLENN STATION	71	42	29	69.23%

HAZEL STATION	86	51	35	69.23%
HISTORIC FOLSOM STATION	307	181	126	69.23%
IRON POINT STATION	241	143	99	69.23%
MATHER FIELD/MILLS STATION	772	456	316	69.23%
POWER INN STATION	236	140	97	69.23%
SACRAMENTO VALLEY STATION	361	213	148	69.23%
ST ROSE OF LIMA PARK STATION	6	3	2	69.23%
STARFIRE STATION	206	122	84	69.23%
SUNRISE STATION	415	245	170	69.23%
TIBER STATION	165	97	67	69.23%
UNIVERSITY/65TH STREET STATION	627	371	257	69.23%
WATT/MANLOVE STATION	445	263	182	69.23%
ZINFANDEL STATION	626	370	256	69.23%
Final Total - Boardings	16,400	13,400	3,000	22.39%

Average Saturday Alightings by Station by Line

Station Name	Jan19	Jan18	Difference	% Change
BLUE LINE - Rt#533	8,231	6,725	1,506	22.39%
12TH & I STATION	160	131	29	22.39%
13TH STREET STATION	215	176	39	22.39%
16TH STREET STATION	810	662	148	22.39%
47TH AVENUE STATION	207	169	38	22.39%
4TH AVE/WAYNE HULTGREN STATION	145	119	27	22.39%
7TH & CAPITOL STATION	263	215	48	22.39%
8TH & CAPITOL STATION	134	110	25	22.39%
8TH & O STATION	110	90	20	22.39%
ALKALI FLAT/LA VALENTINA STATION	404	330	74	22.39%
ARCHIVES PLAZA STATION	66	54	12	22.39%
ARDEN/DEL PASO STATION	501	409	92	22.39%
BROADWAY STATION	413	338	76	22.39%
CATHEDRAL SQUARE STATION	397	324	73	22.39%
CENTER PARKWAY STATION	127	104	23	22.39%
CITY COLLEGE STATION	209	171	38	22.39%
CRC STATION	585	478	107	22.39%
FLORIN STATION	470	384	86	22.39%
FRANKLIN STATION	172	141	32	22.39%
FRUITRIDGE STATION	216	176	39	22.39%
GLOBE AVENUE STATION	136	111	25	22.39%
MARCONI/ARCADE STATION	375	306	69	22.39%
MEADOWVIEW STATION	422	345	77	22.39%
ROSEVILLE ROAD STATION	125	102	23	22.39%
ROYAL OAKS STATION	318	260	58	22.39%
ST ROSE OF LIMA PARK STATION	299	245	55	22.39%
SWANSTON STATION	110	90	20	22.39%
Watt/I-80 Station	771	630	141	22.39%
WATT/I-80 WEST STATION	19	16	3	22.39%
GOLD LINE - Rt#507	8,169	6,675	1,494	22.39%
13TH STREET STATION	215	176	39	22.39%
16TH STREET STATION	835	683	153	22.39%

23RD STREET STATION	198	162	36	22.39%
29TH STREET STATION	537	439	98	22.39%
39TH STREET STATION	110	89	20	22.39%
48TH STREET STATION	114	93	21	22.39%
59TH STREET STATION	102	84	19	22.39%
7TH & CAPITOL STATION	32	26	6	22.39%
7TH & I/COUNTY CENTER STATION	21	17	4	22.39%
8TH & CAPITOL STATION	193	158	35	22.39%
8TH & H STATION	91	74	17	22.39%
8TH & K STATION	432	353	79	22.39%
8TH & O STATION	108	88	20	22.39%
ARCHIVES PLAZA STATION	108	88	20	22.39%
BUTTERFIELD STATION	162	132	30	22.39%
COLLEGE GREENS STATION	461	377	84	22.39%
CORDOVA TOWN CENTER STATION	242	198	44	22.39%
GLENN STATION	55	45	10	22.39%
HAZEL STATION	75	61	14	22.39%
HISTORIC FOLSOM STATION	308	251	56	22.39%
IRON POINT STATION	229	187	42	22.39%
MATHER FIELD/MILLS STATION	734	600	134	22.39%
POWER INN STATION	189	155	35	22.39%
SACRAMENTO VALLEY STATIO	336	274	61	22.39%
SACRAMENTO VALLEY STATION	4	4	1	22.39%
ST ROSE OF LIMA PARK STATION	1	0	0	22.39%
STARFIRE STATION	188	154	34	22.39%
SUNRISE STATION	399	326	73	22.39%
TIBER STATION	139	113	25	22.39%
UNIVERSITY/65TH STREET STATION	576	470	105	22.39%
WATT/MANLOVE STATION	386	315	71	22.39%
ZINFANDEL STATION	592	484	108	22.39%
Final Total - Alightings	16,400	13,400	3,000	22.39%

*Station boardings for Jan 19 v Jan 18 used a percentage of total boardings approach that does not account for monthly fluctuations in individual stations.

Average Sunday Boardings by Station by Line

Station Name	Jan19	Jan18	Difference	% Change
BLUE LINE - Rt#533	5,400	5,400	-	0.00%
12TH & I STATION	117	117	-	0.00%
13TH STREET STATION	137	137	-	0.00%
16TH STREET STATION	494	494	-	0.00%
47TH AVENUE STATION	145	145	-	0.00%
4TH AVE/WAYNE HULTGREN STATION	93	93	-	0.00%
7TH & CAPITOL STATION	231	231	-	0.00%
8TH & CAPITOL STATION	60	60	-	0.00%
8TH & O STATION	81	81	-	0.00%
ALKALI FLAT/LA VALENTINA STATION	272	272	-	0.00%
ARCHIVES PLAZA STATION	48	48	-	0.00%
ARDEN/DEL PASO STATION	318	318	-	0.00%
BROADWAY STATION	253	253	-	0.00%
CATHEDRAL SQUARE STATION	254	254	-	0.00%
CENTER PARKWAY STATION	92	92	-	0.00%
CITY COLLEGE STATION	127	127	-	0.00%
CRC STATION	343	343	-	0.00%
FLORIN STATION	317	317	-	0.00%
FRANKLIN STATION	156	156	-	0.00%
FRUITRIDGE STATION	154	154	-	0.00%
GLOBE AVENUE STATION	97	97	-	0.00%
MARCONI/ARCADE STATION	204	204	-	0.00%
MEADOWVIEW STATION	277	277	-	0.00%
ROSEVILLE ROAD STATION	86	86	-	0.00%
ROYAL OAKS STATION	207	207	-	0.00%
ST ROSE OF LIMA PARK STATION	255	255	-	0.00%
SWANSTON STATION	74	74	-	0.00%
Watt/I-80 Station	457	457	-	0.00%
WATT/I-80 WEST STATION	16	16	-	0.00%
GOLD LINE - Rt#507	6,000	3,600	2,400	66.67%
13TH STREET STATION	190	114	76	66.67%
16TH STREET STATION	561	337	224	66.67%
23RD STREET STATION	136	81	54	66.67%
29TH STREET STATION	419	252	168	66.67%
39TH STREET STATION	94	56	38	66.67%
48TH STREET STATION	74	45	30	66.67%
59TH STREET STATION	79	48	32	66.67%
7TH & CAPITOL STATION	284	171	114	66.67%
7TH & I/COUNTY CENTER STATION	97	58	39	66.67%
8TH & CAPITOL STATION	24	15	10	66.67%
8TH & H STATION	28	17	11	66.67%
8TH & K STATION	45	27	18	66.67%
8TH & O STATION	101	60	40	66.67%
ARCHIVES PLAZA STATION	72	43	29	66.67%
BUTTERFIELD STATION	125	75	50	66.67%
COLLEGE GREENS STATION	352	211	141	66.67%
CORDOVA TOWN CENTER STATION	182	109	73	66.67%
GLENN STATION	41	25	17	66.67%

HAZEL STATION	57	34	23	66.67%
HISTORIC FOLSOM STATION	199	119	79	66.67%
IRON POINT STATION	157	94	63	66.67%
MATHER FIELD/MILLS STATION	533	320	213	66.67%
POWER INN STATION	148	89	59	66.67%
SACRAMENTO VALLEY STATION	269	162	108	66.67%
STARFIRE STATION	148	89	59	66.67%
SUNRISE STATION	298	179	119	66.67%
TIBER STATION	108	65	43	66.67%
UNIVERSITY/65TH STREET STATION	446	268	178	66.67%
WATT/MANLOVE STATION	293	176	117	66.67%
ZINFANDEL STATION	435	261	174	66.67%
Final Total - Boardings	11,400	9,000	2,400	26.67%

Average Sunday Alightings by Station by Line

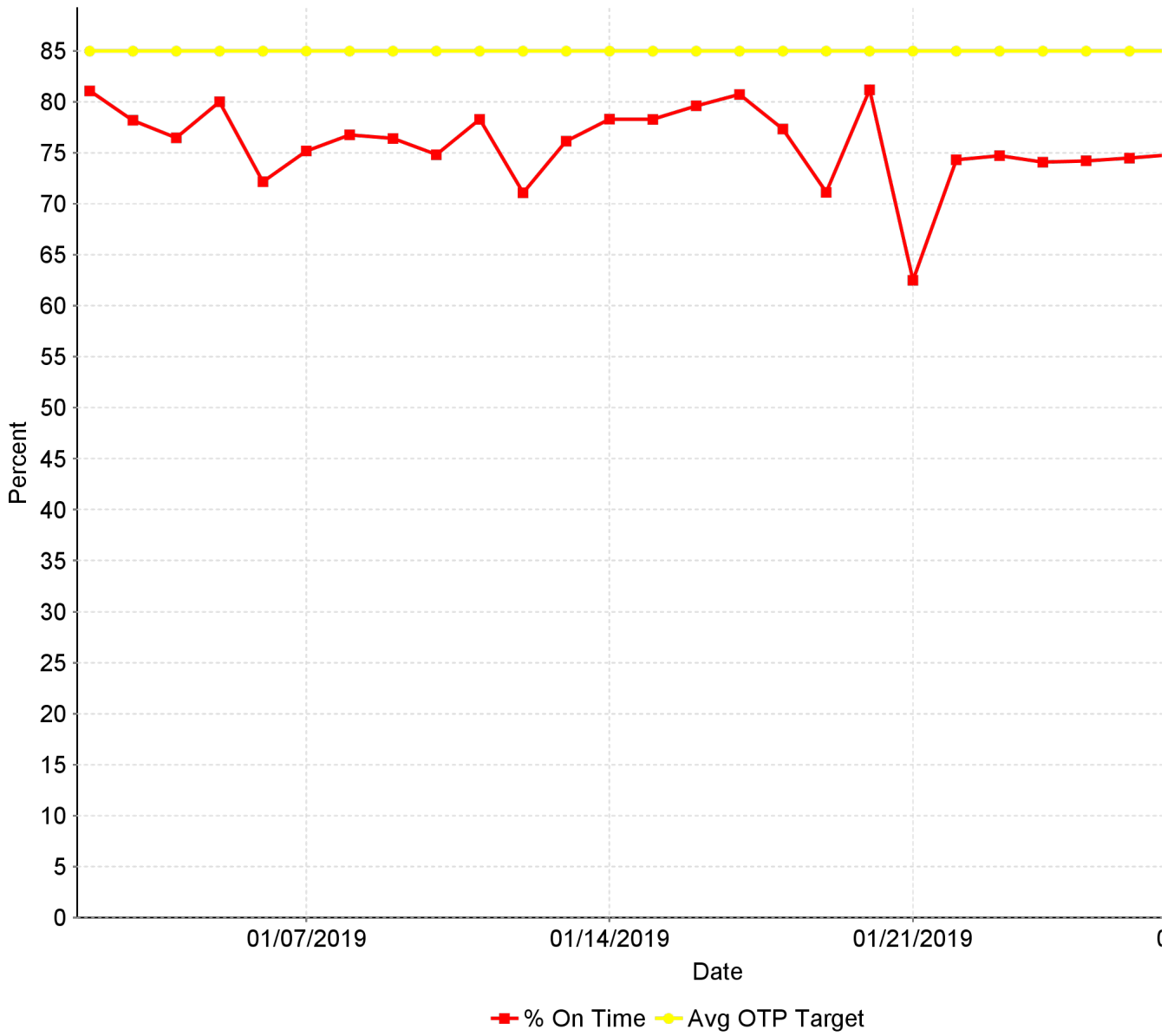
Station Name	Jan19	Jan18	Difference	% Change
BLUE LINE - Rt#533	5,712	4,509	1,202	26.67%
12TH & I STATION	111	87	23	26.67%
13TH STREET STATION	154	122	33	26.67%
16TH STREET STATION	575	454	121	26.67%
47TH AVENUE STATION	153	121	32	26.67%
4TH AVE/WAYNE HULTGREN STATION	94	74	20	26.67%
7TH & CAPITOL STATION	189	149	40	26.67%
8TH & CAPITOL STATION	97	77	20	26.67%
8TH & O STATION	77	61	16	26.67%
ALKALI FLAT/LA VALENTINA STATION	302	239	64	26.67%
ARCHIVES PLAZA STATION	47	37	10	26.67%
ARDEN/DEL PASO STATION	332	262	70	26.67%
BROADWAY STATION	288	227	61	26.67%
CATHEDRAL SQUARE STATION	267	211	56	26.67%
CENTER PARKWAY STATION	86	68	18	26.67%
CITY COLLEGE STATION	136	108	29	26.67%
CRC STATION	379	299	80	26.67%
EMPLOYEE PLATFORM STATION	34	27	7	26.67%
FLORIN STATION	348	275	73	26.67%
FRANKLIN STATION	138	109	29	26.67%
FRUITRIDGE STATION	160	127	34	26.67%
GLOBE AVENUE STATION	91	72	19	26.67%
MARCONI/ARCADE STATION	217	171	46	26.67%
MEADOWVIEW STATION	290	229	61	26.67%
ROSEVILLE ROAD STATION	87	69	18	26.67%
ROYAL OAKS STATION	237	187	50	26.67%
ST ROSE OF LIMA PARK STATION	201	159	42	26.67%
SWANSTON STATION	81	64	17	26.67%
Watt/I-80 Station	531	419	112	26.67%
WATT/I-80 WEST STATION	11	9	2	26.67%
GOLD LINE - Rt#507	5,688	4,491	1,198	26.67%
13TH STREET STATION	150	119	32	26.67%
16TH STREET STATION	559	442	118	26.67%

23RD STREET STATION	138	109	29	26.67%
29TH STREET STATION	376	297	79	26.67%
39TH STREET STATION	96	75	20	26.67%
48TH STREET STATION	75	60	16	26.67%
59TH STREET STATION	73	58	15	26.67%
7TH & CAPITOL STATION	26	21	6	26.67%
7TH & I/COUNTY CENTER STATION	14	11	3	26.67%
8TH & CAPITOL STATION	135	107	28	26.67%
8TH & H STATION	60	47	13	26.67%
8TH & K STATION	306	242	65	26.67%
8TH & O STATION	82	65	17	26.67%
ARCHIVES PLAZA STATION	76	60	16	26.67%
BUTTERFIELD STATION	115	90	24	26.67%
COLLEGE GREENS STATION	328	259	69	26.67%
CORDOVA TOWN CENTER STATION	160	126	34	26.67%
GLENN STATION	31	25	7	26.67%
HAZEL STATION	54	42	11	26.67%
HISTORIC FOLSOM STATION	192	152	40	26.67%
IRON POINT STATION	147	116	31	26.67%
MATHER FIELD/MILLS STATION	484	382	102	26.67%
POWER INN STATION	142	112	30	26.67%
SACRAMENTO VALLEY STATIO	237	187	50	26.67%
SACRAMENTO VALLEY STATION	2	1	0	26.67%
ST ROSE OF LIMA PARK STATION	1	1	0	26.67%
STARFIRE STATION	126	100	27	26.67%
SUNRISE STATION	315	249	66	26.67%
TIBER STATION	89	70	19	26.67%
UNIVERSITY/65TH STREET STATION	402	317	85	26.67%
WATT/MANLOVE STATION	273	216	58	26.67%
ZINFANDEL STATION	424	335	89	26.67%
Final Total - Alightings	11,400	9,000	2,400	26.67%

*Station boardings for Jan 19 v Jan 18 used a percentage of total boardings approach that does not account for monthly fluctuations in individual stations.

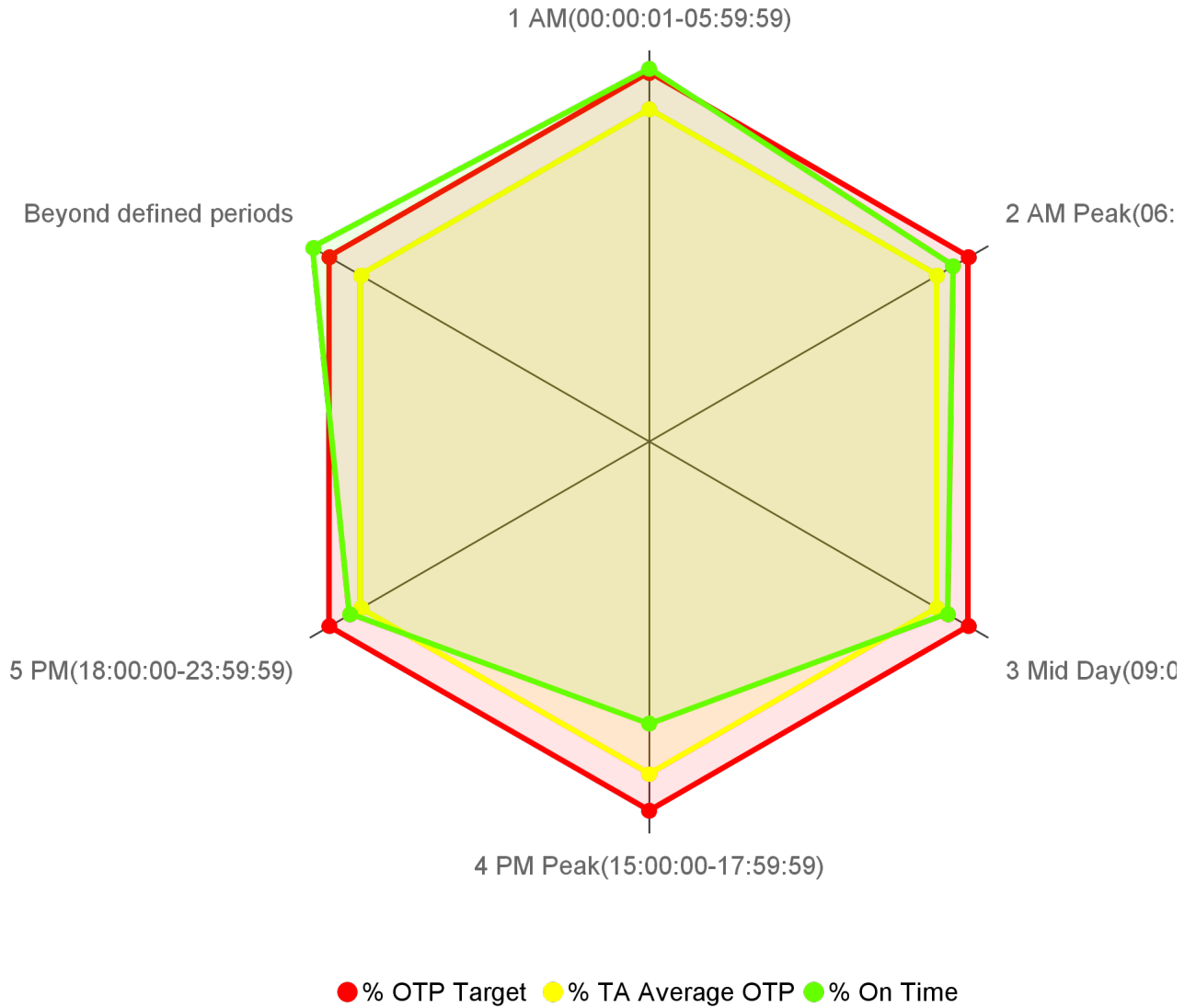
CR-0105 On Time Performance KPI Trend

On Time Performance



CR-0104 On Time Performance by Operational Period

On Time Performance by Operational Period

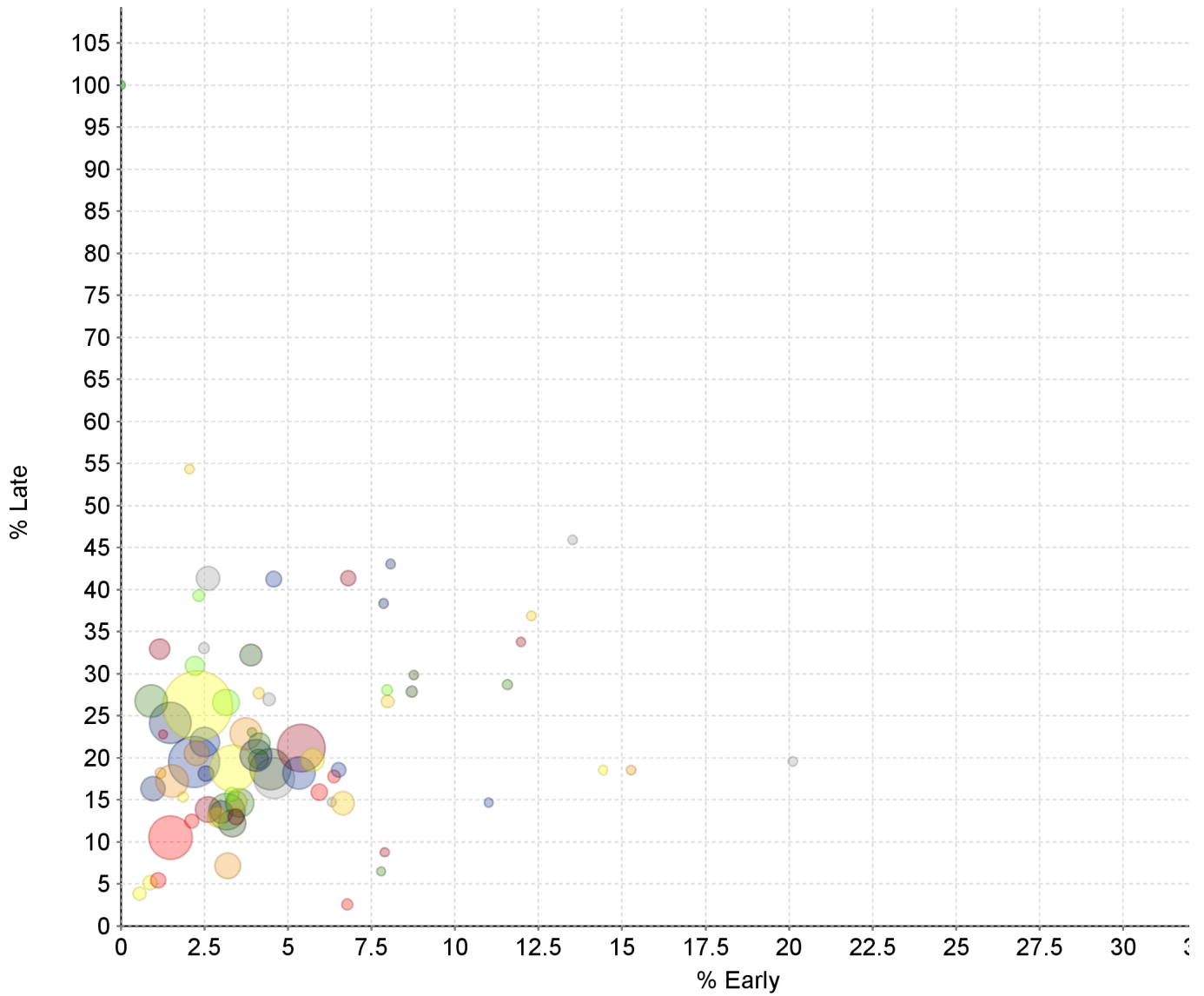


Transit Domain: Bus

Operational Period	% On Time	% TA Average OTP	% OTP Target	# On Time	# Processed
1 AM(00:00:01-05:59:59)	85.88	76.57	85.00	3,162	3,682
2 AM Peak(06:00:00-08:59:59)	80.87	76.57	85.00	46,789	57,857
3 Mid Day(09:00:00-14:59:59)	79.55	76.57	85.00	87,778	110,337
4 PM Peak(15:00:00-17:59:59)	64.92	76.57	85.00	42,737	65,830
5 PM(18:00:00-23:59:59)	79.53	76.57	85.00	39,187	49,272
Beyond defined periods	89.26	76.57	85.00	648	726

CR-0106 On Time Performance Graph

Shows all Routes together on one chart for easy visual indication of outliers.



Route	% Early	% Late	Timepoints Processed
001 - Greenback	1.49	10.51	11,902
002 - Riverside	5.74	19.73	4,760
003 - Riverside Express	2.34	39.27	983
005 - Meadowview - Valley Hi via Massi	6.52	18.57	1,933
006 - Land Park	4.15	21.68	4,437
007 - Pocket Express	4.13	27.69	726
011 - Truxel Road	2.61	41.34	5,133
013 - Northgate	3.45	12.99	2,464
015 - Rio Linda Blvd - O St	4.05	20.27	7,931
019 - Rio Linda	3.90	32.23	4,518
021 - Sunrise - Citrus Heights	1.54	17.24	8,009
022 - Arden	5.94	15.91	2,628
023 - El Camino	3.36	18.77	12,924
024 - Madison - Greenback	3.32	15.66	1,897
025 - Marconi	5.33	18.20	8,031
026 - Fulton	0.91	26.76	8,157

Route	% Early	% Late	Timepoints Processed
028 - Fair Oaks - Folsom Blvd	2.89	12.95	3,637
029 - Arden - California Ave	2.49	33.04	684
030 - J Street (DASH)	5.41	21.16	13,315
033 - Dos Rios	2.55	18.13	2,316
034 - McKinley	4.12	19.87	3,790
038 - P/Q Streets	2.27	20.53	5,372
047 - Phoenix Park	2.12	12.49	1,793
051 - Broadway - Stockton	2.30	26.18	20,794
054 - Center Parkway	2.22	30.94	3,475
055 - Scottsdale	2.51	21.87	7,173
056 - Pocket - C.R.C.	3.56	14.63	6,748
061 - Fruitridge	3.48	14.78	3,849
062 - Freeport	4.59	17.59	10,873
065 - Delta Shores - Franklin - 65th S	1.16	32.95	3,958
067 - Franklin	1.49	24.16	11,177
068 - 44th Street	4.47	18.64	11,129
072 - Rosemont - Lincoln Village	3.20	7.14	5,782
074 - International	1.11	5.43	2,245
075 - Mather Field	0.56	3.86	1,424
080 - Watt - Elkhorn	3.14	26.58	6,079
081 - Florin - 65th Street	2.19	19.54	14,455
082 - Howe - 65th Street	3.17	13.60	9,488
084 - Watt - North Highlands	6.64	14.62	4,877
085 - McClellan Park	4.44	26.94	1,262
086 - San Juan - Silver Eagle	2.62	13.85	5,805
087 - Howe	0.96	16.33	5,199
088 - West El Camino	3.33	12.23	6,388
093 - Hillsdale	3.75	22.87	7,849
095 - Citrus Heights-Antelope Rd	6.38	17.79	1,332
103 - Auburn Blvd	1.87	15.35	482
109 - Hazel Express	7.97	28.07	627
170 - JIBE EASTSIDE	4.58	41.24	2,425
170 - THE FLYER EASTSIDE	11.57	28.70	432
171 - JIBE WESTSIDE	7.99	26.70	1,277
171 - THE FLYER WESTSIDE	20.11	19.58	189
172 - JIBE CENTRAL	6.80	41.36	2,234
172 - THE FLYER CENTRAL	7.86	38.36	318
174 - JIBE MIDWEST	8.71	27.86	804
175 - RANCHO CORDOVAN - SUNRIDGE PARK	1.19	18.18	671
176 - RANCHO CORDOVAN - ANATOLIA	6.78	2.57	738
177 - RANCHO CORDOVAN - VILLAGES	0.87	5.17	1,837

Route	% Early	% Late	Timepoints Processed
190 - Franklin SmaRT Ride	0.00	100.00	1
195 - Citrus Heights Dial A Ride	0.00	100.00	2
205 - Fruitridge Road - Freeport	3.92	23.04	204
206 - 12th Ave - Sutterville Road	12.29	36.87	179
210 - La Riveria Drive	6.32	14.74	95
211 - College Greens	11.97	33.80	142
212 - 14th Ave - 21st Ave	8.07	43.05	223
213 - Fruitridge Road - Stockton Blvd	8.77	29.82	171
214 - Broadway - Stockton Blvd	15.28	18.52	216
226 - Pocket Riverside Blvd	1.27	22.78	79
227 - South Land Park - Greenhaven Dri	14.43	18.56	97
228 - Gloria Drive - Rush River Drive	34.15	20.73	82
246 - Meadowview - Greenhaven	11.01	14.68	109
247 - 21st Street - Florin Road	7.79	6.49	77
248 - Meadowview - Rush River	2.05	54.36	195
252 - Freeport - Fruitridge - ML King	13.53	45.89	207
255 - La Riveria - College Greens	7.89	8.77	114
051X - W/X	3.02	13.55	4,776

CR-0103 Overall On Time

Overall On Time Timepoints

On Time	Early	Late	Timepoints Processed
76.57%	3.33%	20.10%	287,704