



# Ridership Report

## Current Month & Fiscal YTD Summary

February 2019					
	Average Daily Boardings			Monthly	YTD
	Weekday	Saturday	Sunday		
Days	20	4	4	28	
<b>Bus</b>	34,656	11,421	7,158	774,464	6,586,937
Full-Size Bus	32,847	11,421	7,158	731,245	
Community Bus	1,031			20,614	
SmaRT Ride	466			9,313	
Folsom Service	313			6,269	
Special Service*				7,023	
<b>Light Rail</b>	36,580	14,697	10,770	836,605	7,021,990
Blue Line	18,783	7,318	5,756	427,956	
Gold Line	17,481	7,379	5,014	399,192	
Green Line	316			6,316	
Special Service*				3,141	
<b>System Total</b>	<b>71,236</b>	<b>26,118</b>	<b>17,928</b>	<b>1,611,069</b>	<b>13,608,927</b>

February 2019				
KPI Comparison - Average Weekday Boardings				
	Actual	KPI Goal	Difference	Percent Difference
Bus Avg Weekday	34,656	36,348	(1,692)	-4.7%
Rail Avg Weekday	36,580	32,861	3,719	11.3%
Monthly Total	1,611,069	1,549,873	61,196	3.9%
Total YTD	13,608,927	13,134,797	474,130	3.6%

February 2018					
	Average Daily Boardings			Monthly	YTD
	Weekday	Saturday	Sunday		
Days	20	4	4	28	
<b>Bus</b>	38,071	13,407	7,686	850,930	6,838,881
Full-Size Bus	37,232	13,407	7,686		
Community Bus	839				
Special Service*				5,133	
<b>Light Rail</b>	35,490	12,800	10,100	810,692	7,199,174
Blue Line	16,400	6,900	5,700		
Gold Line	18,700	5,900	4,400		
Green Line	390				
Golden 1 Service				9,292	
<b>System Total</b>	<b>73,561</b>	<b>26,207</b>	<b>17,786</b>	<b>1,661,622</b>	<b>14,038,055</b>

% Change FY 2019/2018					
	Average Daily Boardings			Monthly	YTD
	Weekday	Saturday	Sunday		
Total Bus	-9.0%	-14.8%	-6.9%	-9.0%	-3.7%
Light Rail	3.1%	14.8%	6.6%	3.2%	-2.5%
System Total	-3.2%	-0.3%	0.8%	-3.0%	-3.1%

## Route Level Ridership Comparison (Fixed Route Bus)

### Weekday Route Comparison

Route	Feb 2019	Feb 2018	Difference	% Change
1	1,725	2,156	(431)	-20%
2	408	422	(14)	-3%
3	186	184	1	1%
5	200	195	5	2%
6	293	323	(30)	-9%
7	118	120	(2)	-2%
11	615	658	(43)	-6%
13	255	326	(71)	-22%
15	1,028	1,131	(103)	-9%
19	582	640	(58)	-9%
21	912	1,061	(149)	-14%
22	223	256	(32)	-13%
23	1,400	1,639	(239)	-15%
24	137	163	(26)	-16%
25	892	955	(63)	-7%
26	992	1,116	(124)	-11%
28	305	334	(30)	-9%
29	99	113	(15)	-13%
30	1,895	1,920	(25)	-1%
33	237	210	27	13%
34	249	282	(33)	-12%
38	381	386	(4)	-1%
47	79	129	(50)	-39%
51	2,867	3,337	(470)	-14%
54	251	286	(36)	-13%
55	672	686	(14)	-2%
56	930	1,042	(113)	-11%
61	452	511	(58)	-11%
62	966	1,146	(181)	-16%
65	364	395	(31)	-8%
67	1,035	1,171	(136)	-12%
68	1,052	1,169	(117)	-10%
72	961	1,015	(55)	-5%
74	164	197	(33)	-17%
75	163	168	(5)	-3%
80	821	933	(112)	-12%
81	2,422	2,496	(73)	-3%
82	1,617	1,784	(168)	-9%
84	671	755	(84)	-11%
85				
86	1,002	1,083	(82)	-8%
87	1,266	1,283	(17)	-1%
88	744	783	(39)	-5%
93	760	869	(110)	-13%
95	59	56	3	5%
103	63	74	(11)	-14%
109	94	91	3	4%
170	208	99	109	110%
171	76	78	(2)	-2%
172	148	104	44	42%
175	26	28	(2)	-9%
176	36	33	3	10%
177	106	91	15	16%
205	32	29	3	12%
206	24	28	(4)	-15%
210	42	42	0	0%
211	100	88	11	13%
212	72	53	19	36%
214	38	12	26	214%
227	21	15	6	38%
228	34	16	19	118%
246	46	43	3	7%
248	30	19	11	59%
252	42	29	13	43%
255	43	49	(6)	-12%

### Saturday Route Comparison

Route	Feb 2019	Feb 2018	Difference	% Change
1	664	770	(106)	-14%
11	220	281	(61)	-22%
15	465	522	(58)	-11%
19	240	276	(35)	-13%
21	435	518	(84)	-16%
23	931	1,123	(192)	-17%
25	338	395	(58)	-15%
26	254	280	(26)	-9%
30	478	557	(78)	-14%
38	172	168	4	3%
51	1,426	1,604	(178)	-11%
54	65	116	(52)	-44%
55	208	254	(45)	-18%
56	446	520	(74)	-14%
62	291	340	(49)	-14%
67	291	340	(49)	-14%
68	464	534	(70)	-13%
72	201	261	(61)	-23%
75	76	122	(46)	-38%
80	583	617	(33)	-5%
81	972	1,168	(196)	-17%
82	430	533	(103)	-19%
84	323	364	(41)	-11%
86	339	362	(24)	-7%
87	380	369	10	3%
88	246	260	(14)	-5%
93	269	284	(15)	-5%

### Sunday Route Comparison

Route	Feb 2019	Feb 2018	Difference	% Change
1	511	514	(4)	-1%
15	363	387	(24)	-6%
19	186	220	(34)	-15%
21	326	324	2	0%
23	618	685	(66)	-10%
26	166	184	(18)	-10%
30	205	238	(33)	-14%
38	136	126	11	8%
51	969	1,001	(32)	-3%
55	119	153	(35)	-23%
56	269	293	(24)	-8%
67	411	413	(3)	-1%
68	389	470	(81)	-17%
72	148	191	(43)	-22%
75	70	96	(25)	-26%
80	435	463	(28)	-6%
81	559	632	(74)	-12%
82	368	421	(53)	-12%
86	252	226	27	12%
87	254	239	14	6%
88	196	209	(13)	-6%
93	209	251	(42)	-17%

Please note:

Route totals do not add up to monthly totals. Route by Route comparisons are only shown for routes that operated in each year. Additionally special service routes are not included on this page.

## Average Weekday Boardings by Station by Line

Station Name	Feb19	Feb18	Difference	% Change
<b>BLUE LINE - Total</b>	<b>18,783</b>	<b>16,400</b>	<b>2,383</b>	<b>14.53%</b>
12TH & I STATION	439	413	27	6.47%
13TH STREET STATION	461	456	6	1.26%
16TH STREET STATION	1,629	1,416	214	15.08%
47TH AVENUE STATION	571	486	84	17.33%
4TH AVE/WAYNE HULTGREN STATION	649	483	166	34.50%
7TH & CAPITOL STATION	715	636	79	12.37%
8TH & CAPITOL STATION	370	343	27	7.74%
8TH & O STATION	733	673	60	8.94%
ALKALI FLAT/LA VALENTINA STA	711	606	105	17.35%
ARCHIVES PLAZA STATION	498	451	47	10.47%
ARDEN/DEL PASO STATION	761	692	69	9.98%
BROADWAY STATION	653	576	77	13.35%
CATHEDRAL SQUARE STATION	755	685	70	10.25%
CENTER PARKWAY STATION	265	233	32	13.84%
CITY COLLEGE STATION	1,055	804	251	31.22%
CRC STATION	1,393	1,153	240	20.84%
FLORIN STATION	885	787	98	12.50%
FRANKLIN STATION	636	618	18	2.96%
FRUITRIDGE STATION	464	396	68	17.23%
GLOBE AVENUE STATION	262	229	34	14.68%
MARCONI/ARCADE STATION	699	616	83	13.51%
MEADOWVIEW STATION	895	781	114	14.63%
ROSEVILLE ROAD STATION	640	561	79	14.07%
ROYAL OAKS STATION	374	347	27	7.68%
ST ROSE OF LIMA PARK STATION	595	527	68	12.87%
SWANSTON STATION	250	218	32	14.72%
Watt/I-80 Station	1,200	1,032	168	16.26%
WATT/I-80 WEST STATION	141	120	21	17.38%
<b>GOLD LINE - Total</b>	<b>17,481</b>	<b>18,700</b>	<b>(1,219)</b>	<b>-6.52%</b>
13TH STREET STATION	613	687	(74)	-10.76%
16TH STREET STATION	1,704	1,781	(77)	-4.34%
23RD STREET STATION	509	531	(22)	-4.16%
29TH STREET STATION	1,383	1,501	(118)	-7.84%
39TH STREET STATION	261	290	(29)	-10.04%
48TH STREET STATION	222	242	(20)	-8.46%
59TH STREET STATION	259	270	(11)	-4.24%
7TH & CAPITOL STATION	890	986	(95)	-9.68%
7TH & I/COUNTY CENTER STATION	346	375	(29)	-7.68%
8TH & CAPITOL STATION	63	59	4	7.35%
8TH & H STATION	70	81	(11)	-13.48%
8TH & K STATION	84	84	(0)	-0.15%
8TH & O STATION	737	792	(55)	-6.89%
ARCHIVES PLAZA STATION	632	641	(9)	-1.40%
BUTTERFIELD STATION	550	561	(11)	-1.92%
COLLEGE GREENS STATION	623	669	(46)	-6.83%
CORDOVA TOWN CENTER STATION	460	490	(30)	-6.08%
GLENN STATION	256	268	(12)	-4.49%
HAZEL STATION	161	176	(15)	-8.55%

HISTORIC FOLSOM STATION	470	513	(43)	-8.37%
IRON POINT STATION	410	472	(63)	-13.26%
MATHER FIELD/MILLS STATION	1,251	1,391	(140)	-10.08%
POWER INN STATION	493	545	(52)	-9.57%
SACRAMENTO VALLEY STATION	559	532	27	5.08%
STARFIRE STATION	288	313	(25)	-7.89%
SUNRISE STATION	769	854	(85)	-9.97%
TIBER STATION	277	300	(23)	-7.81%
UNIVERSITY/65TH STREET STATION	1,416	1,444	(28)	-1.92%
WATT/MANLOVE STATION	981	1,043	(62)	-5.99%
ZINFANDEL STATION	731	796	(65)	-8.21%
<b>GREEN LINE - Total</b>	<b>316</b>	<b>390</b>	<b>(74)</b>	<b>-19.03%</b>
13TH STREET STATION	71	90	(19)	-21.02%
7TH & CAPITOL STATION	17	25	(8)	-31.60%
7TH & I/COUNTY CENTER STATION	17	24	(7)	-30.05%
8TH & CAPITOL STATION	14	18	(4)	-21.12%
8TH & K STATION	57	48	9	19.59%
8TH & O STATION	18	22	(4)	-18.11%
ARCHIVES PLAZA STATION	21	25	(4)	-16.28%
TOWNSHIP 9 STATION	101	139	(38)	-27.17%
<b>All Stations</b>	<b>36,580</b>	<b>35,490</b>	<b>1,090</b>	<b>3.07%</b>

## Average Weekday Alightings by Station by Line

Station Name	Feb19	Feb18	Difference	% Change
<b>BLUE LINE - Rt#533</b>	<b>18,522</b>	<b>17,448</b>	<b>1,074</b>	<b>6.15%</b>
12TH & I STATION	482	466	16	3.41%
13TH STREET STATION	502	508	(6)	-1.22%
16TH STREET STATION	1,657	1,554	103	6.61%
47TH AVENUE STATION	617	534	82	15.42%
4TH AVE/WAYNE HULTGREN STATION	517	420	97	23.07%
7TH & CAPITOL STATION	628	600	28	4.67%
8TH & CAPITOL STATION	477	459	18	3.82%
8TH & O STATION	685	659	26	3.98%
ALKALI FLAT/LA VALENTINA STATION	684	647	37	5.64%
ARCHIVES PLAZA STATION	453	446	7	1.60%
ARDEN/DEL PASO STATION	791	776	16	2.04%
BROADWAY STATION	673	637	36	5.62%
CATHEDRAL SQUARE STATION	780	770	11	1.36%
CENTER PARKWAY STATION	215	200	15	7.48%
CITY COLLEGE STATION	1,075	789	286	36.20%
CRC STATION	1,449	1,296	153	11.79%
FLORIN STATION	883	848	36	4.23%
FRANKLIN STATION	609	635	(26)	-4.08%
FRUITRIDGE STATION	472	421	51	12.20%
GLOBE AVENUE STATION	247	255	(8)	-3.22%
MARCONI/ARCADE STATION	657	634	24	3.72%
MEADOWVIEW STATION	880	828	52	6.27%
ROSEVILLE ROAD STATION	594	612	(18)	-2.94%
ROYAL OAKS STATION	356	375	(19)	-5.16%
ST ROSE OF LIMA PARK STATION	468	477	(9)	-1.84%
SWANSTON STATION	251	239	12	4.98%
Watt/I-80 Station	1,213	1,164	48	4.16%
WATT/I-80 WEST STATION	135	131	4	3.10%
<b>GOLD LINE - Rt#507</b>	<b>17,520</b>	<b>17,516</b>	<b>5</b>	<b>0.03%</b>
13TH STREET STATION	516	533	(16)	-3.07%
16TH STREET STATION	1,698	1,684	14	0.81%
23RD STREET STATION	494	486	7	1.49%
29TH STREET STATION	1,350	1,379	(29)	-2.11%
39TH STREET STATION	268	265	2	0.86%
48TH STREET STATION	226	245	(18)	-7.50%
59TH STREET STATION	274	269	5	1.96%
7TH & CAPITOL STATION	66	58	9	14.86%
7TH & I/COUNTY CENTER STATION	39	26	14	52.67%
8TH & CAPITOL STATION	643	673	(31)	-4.56%
8TH & H STATION	316	341	(25)	-7.31%
8TH & K STATION	687	665	21	3.20%
8TH & O STATION	641	648	(7)	-1.09%
ARCHIVES PLAZA STATION	602	612	(9)	-1.54%
BUTTERFIELD STATION	517	510	8	1.50%
COLLEGE GREENS STATION	608	603	5	0.78%
CORDOVA TOWN CENTER STATION	435	429	6	1.38%
GLENN STATION	249	239	9	3.89%

HAZEL STATION	154	158	(5)	-2.90%
HISTORIC FOLSOM STATION	460	475	(16)	-3.30%
IRON POINT STATION	411	428	(16)	-3.77%
MATHER FIELD/MILLS STATION	1,250	1,244	6	0.45%
POWER INN STATION	481	503	(22)	-4.27%
SACRAMENTO VALLEY STATION	441	429	12	2.80%
SACRAMENTO VALLEY STATION	196	236	(40)	-16.89%
STARFIRE STATION	259	259	(0)	-0.06%
SUNRISE STATION	740	773	(33)	-4.26%
TIBER STATION	266	270	(3)	-1.22%
UNIVERSITY/65TH STREET STATION	1,499	1,350	148	10.99%
WATT/MANLOVE STATION	987	967	20	2.09%
ZINFANDEL STATION	743	756	(13)	-1.75%
<b>GREEN LINE - Rt#519</b>	<b>538</b>	<b>526</b>	<b>11</b>	<b>2.16%</b>
13TH STREET STATION	157	169	(12)	-7.25%
7TH & CAPITOL STATION	41	42	(2)	-3.68%
7TH & I/COUNTY CENTER STATIO	57	58	(1)	-2.16%
8TH & CAPITOL STATION	9	11	(1)	-13.97%
8TH & K STATION	43	31	12	38.07%
8TH & O STATION	26	26	(0)	-0.21%
ARCHIVES PLAZA STATION	30	27	3	12.43%
TOWNSHIP 9 STATION	174	161	13	7.90%
<b>All Stations</b>	<b>36,580</b>	<b>35,490</b>	<b>1,090</b>	<b>3.07%</b>

## Average Saturday Boardings by Station by Line

Station Name	Feb19	Feb18	Difference	% Change
<b>BLUE LINE - Rt#533</b>	<b>7,318</b>	<b>6,900</b>	<b>418</b>	<b>6.06%</b>
12TH & I STATION	148	140	8	6.06%
13TH STREET STATION	186	176	11	6.06%
16TH STREET STATION	668	630	38	6.06%
47TH AVENUE STATION	182	172	10	6.06%
4TH AVE/WAYNE HULTGREN STATION	133	125	8	6.06%
7TH & CAPITOL STATION	316	298	18	6.06%
8TH & CAPITOL STATION	80	75	5	6.06%
8TH & O STATION	103	97	6	6.06%
ALKALI FLAT/LA VALENTINA STATION	360	339	21	6.06%
ARCHIVES PLAZA STATION	74	70	4	6.06%
ARDEN/DEL PASO STATION	437	412	25	6.06%
BROADWAY STATION	341	321	19	6.06%
CATHEDRAL SQUARE STATION	320	302	18	6.06%
CENTER PARKWAY STATION	127	120	7	6.06%
CITY COLLEGE STATION	207	195	12	6.06%
CRC STATION	495	467	28	6.06%
FLORIN STATION	402	379	23	6.06%
FRANKLIN STATION	183	173	10	6.06%
FRUITRIDGE STATION	206	194	12	6.06%
GLOBE AVENUE STATION	115	108	7	6.06%
MARCONI/ARCADE STATION	341	322	19	6.06%
MEADOWVIEW STATION	379	357	22	6.06%
ROSEVILLE ROAD STATION	101	95	6	6.06%
ROYAL OAKS STATION	255	240	15	6.06%
ST ROSE OF LIMA PARK STATION	341	322	19	6.06%
SWANSTON STATION	111	104	6	6.06%
Watt/I-80 Station	639	603	37	6.06%
WATT/I-80 WEST STATION	22	20	1	6.06%
<b>GOLD LINE - Rt#507</b>	<b>7,379</b>	<b>5,900</b>	<b>1,479</b>	<b>25.07%</b>
13TH STREET STATION	216	173	43	25.07%
16TH STREET STATION	707	565	142	25.07%
23RD STREET STATION	177	142	36	25.07%
29TH STREET STATION	538	430	108	25.07%
39TH STREET STATION	117	93	23	25.07%
48TH STREET STATION	99	79	20	25.07%
59TH STREET STATION	109	87	22	25.07%
7TH & CAPITOL STATION	352	282	71	25.07%
7TH & I/COUNTY CENTER STATION	111	89	22	25.07%
8TH & CAPITOL STATION	30	24	6	25.07%
8TH & H STATION	30	24	6	25.07%
8TH & K STATION	59	47	12	25.07%
8TH & O STATION	119	95	24	25.07%
ARCHIVES PLAZA STATION	95	76	19	25.07%
BUTTERFIELD STATION	148	119	30	25.07%
COLLEGE GREENS STATION	431	345	86	25.07%
CORDOVA TOWN CENTER STATION	215	172	43	25.07%
GLENN STATION	60	48	12	25.07%

HAZEL STATION	72	57	14	25.07%
HISTORIC FOLSOM STATION	257	206	52	25.07%
IRON POINT STATION	202	162	41	25.07%
MATHER FIELD/MILLS STATION	647	517	130	25.07%
POWER INN STATION	198	158	40	25.07%
SACRAMENTO VALLEY STATION	303	242	61	25.07%
ST ROSE OF LIMA PARK STATION	5	4	1	25.07%
STARFIRE STATION	173	138	35	25.07%
SUNRISE STATION	348	278	70	25.07%
TIBER STATION	138	110	28	25.07%
UNIVERSITY/65TH STREET STATION	526	421	105	25.07%
WATT/MANLOVE STATION	373	299	75	25.07%
ZINFANDEL STATION	525	419	105	25.07%
<b>Final Total - Boardings</b>	<b>14,697</b>	<b>12,800</b>	<b>1,897</b>	<b>14.82%</b>

### Average Saturday Alightings by Station by Line

Station Name	Feb19	Feb18	Difference	% Change
<b>BLUE LINE - Rt#533</b>	<b>7,376</b>	<b>6,424</b>	<b>952</b>	<b>14.82%</b>
12TH & I STATION	143	125	19	14.82%
13TH STREET STATION	192	168	25	14.82%
16TH STREET STATION	726	632	94	14.82%
47TH AVENUE STATION	185	161	24	14.82%
4TH AVE/WAYNE HULTGREN STATION	130	113	17	14.82%
7TH & CAPITOL STATION	235	205	30	14.82%
8TH & CAPITOL STATION	120	105	16	14.82%
8TH & O STATION	99	86	13	14.82%
ALKALI FLAT/LA VALENTINA STATION	362	315	47	14.82%
ARCHIVES PLAZA STATION	59	51	8	14.82%
ARDEN/DEL PASO STATION	449	391	58	14.82%
BROADWAY STATION	370	323	48	14.82%
CATHEDRAL SQUARE STATION	356	310	46	14.82%
CENTER PARKWAY STATION	114	99	15	14.82%
CITY COLLEGE STATION	187	163	24	14.82%
CRC STATION	524	457	68	14.82%
FLORIN STATION	421	367	54	14.82%
FRANKLIN STATION	154	134	20	14.82%
FRUITRIDGE STATION	193	168	25	14.82%
GLOBE AVENUE STATION	122	106	16	14.82%
MARCONI/ARCADE STATION	336	293	43	14.82%
MEADOWVIEW STATION	378	330	49	14.82%
ROSEVILLE ROAD STATION	112	98	14	14.82%
ROYAL OAKS STATION	285	248	37	14.82%
ST ROSE OF LIMA PARK STATION	268	234	35	14.82%
SWANSTON STATION	99	86	13	14.82%
Watt/I-80 Station	691	602	89	14.82%
WATT/I-80 WEST STATION	17	15	2	14.82%
<b>GOLD LINE - Rt#507</b>	<b>7,321</b>	<b>6,376</b>	<b>945</b>	<b>14.82%</b>
13TH STREET STATION	193	168	25	14.82%
16TH STREET STATION	749	652	97	14.82%



23RD STREET STATION	178	155	23	14.82%
29TH STREET STATION	482	419	62	14.82%
39TH STREET STATION	98	85	13	14.82%
48TH STREET STATION	102	89	13	14.82%
59TH STREET STATION	92	80	12	14.82%
7TH & CAPITOL STATION	29	25	4	14.82%
7TH & I/COUNTY CENTER STATION	19	17	2	14.82%
8TH & CAPITOL STATION	173	151	22	14.82%
8TH & H STATION	81	71	10	14.82%
8TH & K STATION	387	337	50	14.82%
8TH & O STATION	96	84	12	14.82%
ARCHIVES PLAZA STATION	97	84	13	14.82%
BUTTERFIELD STATION	145	126	19	14.82%
COLLEGE GREENS STATION	413	360	53	14.82%
CORDOVA TOWN CENTER STATION	217	189	28	14.82%
GLENN STATION	49	43	6	14.82%
HAZEL STATION	67	58	9	14.82%
HISTORIC FOLSOM STATION	276	240	36	14.82%
IRON POINT STATION	205	178	26	14.82%
MATHER FIELD/MILLS STATION	658	573	85	14.82%
POWER INN STATION	170	148	22	14.82%
SACRAMENTO VALLEY STATIO	301	262	39	14.82%
SACRAMENTO VALLEY STATION	4	3	1	14.82%
ST ROSE OF LIMA PARK STATION	0	0	0	14.82%
STARFIRE STATION	169	147	22	14.82%
SUNRISE STATION	357	311	46	14.82%
TIBER STATION	124	108	16	14.82%
UNIVERSITY/65TH STREET STATION	516	449	67	14.82%
WATT/MANLOVE STATION	346	301	45	14.82%
ZINFANDEL STATION	530	462	68	14.82%
<b>Final Total - Alightings</b>	<b>14,697</b>	<b>12,800</b>	<b>1,897</b>	<b>14.82%</b>

\*Station boardings for Feb 19 v Feb 18 used a percentage of total boardings approach that does not account for monthly fluctuations in individual stations.

## Average Sunday Boardings by Station by Line

Station Name	Feb19	Feb18	Difference	% Change
<b>BLUE LINE - Rt#533</b>	<b>5,756</b>	<b>5,700</b>	<b>56</b>	<b>0.98%</b>
12TH & I STATION	125	123	1	0.98%
13TH STREET STATION	146	144	1	0.98%
16TH STREET STATION	526	521	5	0.98%
47TH AVENUE STATION	154	153	1	0.98%
4TH AVE/WAYNE HULTGREN STATION	99	98	1	0.98%
7TH & CAPITOL STATION	246	244	2	0.98%
8TH & CAPITOL STATION	63	63	1	0.98%
8TH & O STATION	87	86	1	0.98%
ALKALI FLAT/LA VALENTINA STATION	290	287	3	0.98%
ARCHIVES PLAZA STATION	51	51	0	0.98%
ARDEN/DEL PASO STATION	339	336	3	0.98%
BROADWAY STATION	269	267	3	0.98%
CATHEDRAL SQUARE STATION	271	268	3	0.98%
CENTER PARKWAY STATION	98	97	1	0.98%
CITY COLLEGE STATION	136	134	1	0.98%
CRC STATION	366	363	4	0.98%
FLORIN STATION	338	335	3	0.98%
FRANKLIN STATION	166	165	2	0.98%
FRUITRIDGE STATION	164	162	2	0.98%
GLOBE AVENUE STATION	103	102	1	0.98%
MARCONI/ARCADE STATION	217	215	2	0.98%
MEADOWVIEW STATION	295	292	3	0.98%
ROSEVILLE ROAD STATION	91	90	1	0.98%
ROYAL OAKS STATION	220	218	2	0.98%
ST ROSE OF LIMA PARK STATION	272	270	3	0.98%
SWANSTON STATION	78	78	1	0.98%
Watt/I-80 Station	487	482	5	0.98%
WATT/I-80 WEST STATION	17	17	0	0.98%
<b>GOLD LINE - Rt#507</b>	<b>5,014</b>	<b>4,400</b>	<b>614</b>	<b>13.95%</b>
13TH STREET STATION	158	139	19	13.95%
16TH STREET STATION	469	411	57	13.95%
23RD STREET STATION	113	99	14	13.95%
29TH STREET STATION	351	308	43	13.95%
39TH STREET STATION	79	69	10	13.95%
48TH STREET STATION	62	54	8	13.95%
59TH STREET STATION	66	58	8	13.95%
7TH & CAPITOL STATION	238	208	29	13.95%
7TH & I/COUNTY CENTER STATION	81	71	10	13.95%
8TH & CAPITOL STATION	20	18	2	13.95%
8TH & H STATION	24	21	3	13.95%
8TH & K STATION	37	33	5	13.95%
8TH & O STATION	84	74	10	13.95%
ARCHIVES PLAZA STATION	60	53	7	13.95%
BUTTERFIELD STATION	105	92	13	13.95%
COLLEGE GREENS STATION	294	258	36	13.95%
CORDOVA TOWN CENTER STATION	152	134	19	13.95%
GLENN STATION	35	30	4	13.95%

HAZEL STATION	48	42	6	13.95%
HISTORIC FOLSOM STATION	166	146	20	13.95%
IRON POINT STATION	131	115	16	13.95%
MATHER FIELD/MILLS STATION	446	391	55	13.95%
POWER INN STATION	124	109	15	13.95%
SACRAMENTO VALLEY STATION	225	198	28	13.95%
STARFIRE STATION	124	109	15	13.95%
SUNRISE STATION	249	219	31	13.95%
TIBER STATION	90	79	11	13.95%
UNIVERSITY/65TH STREET STATION	373	327	46	13.95%
WATT/MANLOVE STATION	245	215	30	13.95%
ZINFANDEL STATION	363	319	45	13.95%
<b>Final Total - Boardings</b>	<b>10,770</b>	<b>10,100</b>	<b>670</b>	<b>6.63%</b>

### Average Sunday Alightings by Station by Line

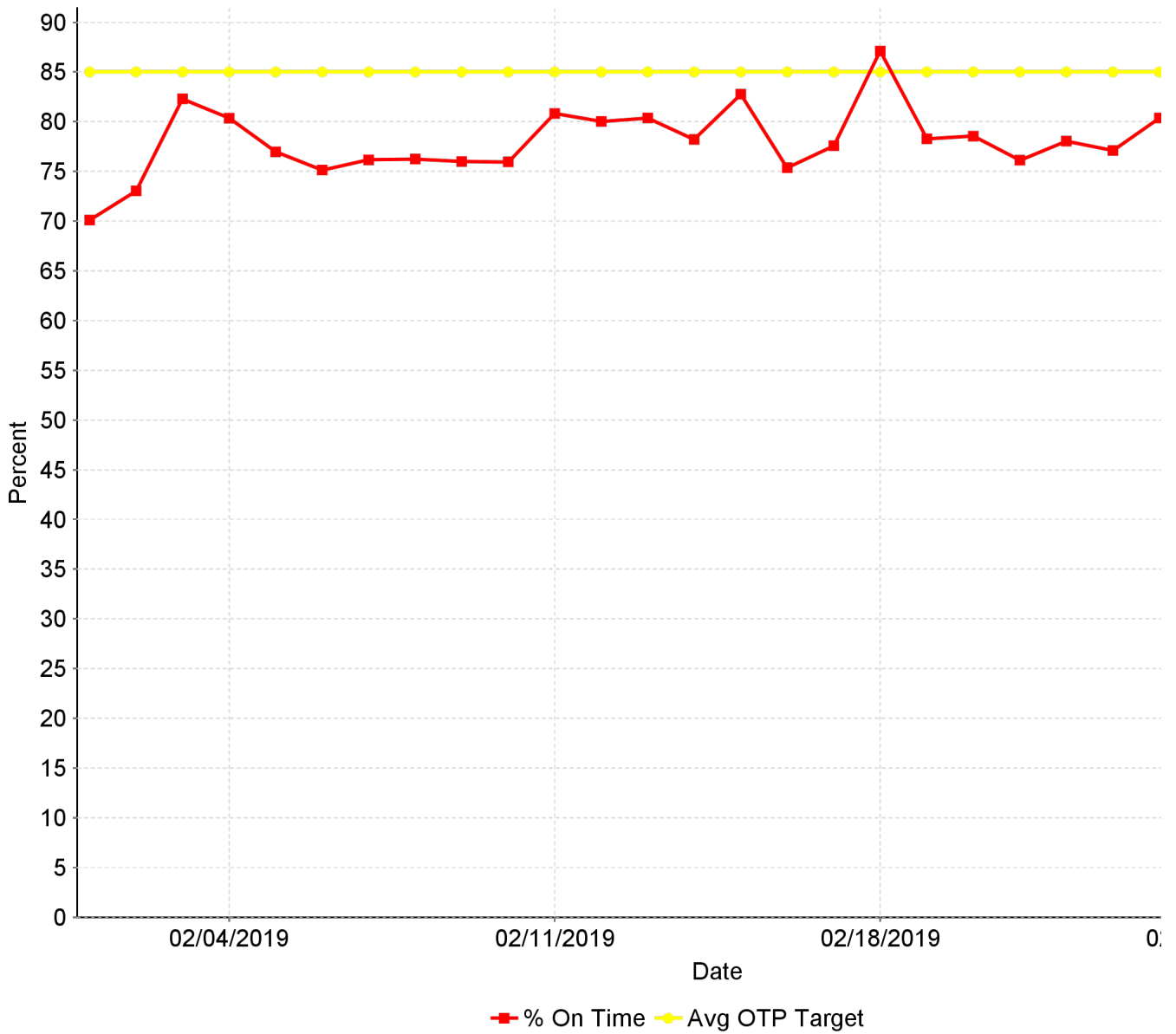
Station Name	Feb19	Feb18	Difference	% Change
<b>BLUE LINE - Rt#533</b>	<b>5,396</b>	<b>5,060</b>	<b>336</b>	<b>6.63%</b>
12TH & I STATION	104	98	7	6.63%
13TH STREET STATION	146	137	9	6.63%
16TH STREET STATION	543	509	34	6.63%
47TH AVENUE STATION	144	135	9	6.63%
4TH AVE/WAYNE HULTGREN STATION	89	83	6	6.63%
7TH & CAPITOL STATION	178	167	11	6.63%
8TH & CAPITOL STATION	92	86	6	6.63%
8TH & O STATION	72	68	5	6.63%
ALKALI FLAT/LA VALENTINA STATION	286	268	18	6.63%
ARCHIVES PLAZA STATION	44	42	3	6.63%
ARDEN/DEL PASO STATION	313	294	19	6.63%
BROADWAY STATION	272	255	17	6.63%
CATHEDRAL SQUARE STATION	252	236	16	6.63%
CENTER PARKWAY STATION	81	76	5	6.63%
CITY COLLEGE STATION	129	121	8	6.63%
CRC STATION	358	336	22	6.63%
EMPLOYEE PLATFORM STATION	32	30	2	6.63%
FLORIN STATION	329	308	20	6.63%
FRANKLIN STATION	130	122	8	6.63%
FRUITRIDGE STATION	152	142	9	6.63%
GLOBE AVENUE STATION	86	80	5	6.63%
MARCONI/ARCADE STATION	205	192	13	6.63%
MEADOWVIEW STATION	274	257	17	6.63%
ROSEVILLE ROAD STATION	82	77	5	6.63%
ROYAL OAKS STATION	224	210	14	6.63%
ST ROSE OF LIMA PARK STATION	190	178	12	6.63%
SWANSTON STATION	77	72	5	6.63%
Watt/I-80 Station	502	470	31	6.63%
WATT/I-80 WEST STATION	10	10	1	6.63%
<b>GOLD LINE - Rt#507</b>	<b>5,374</b>	<b>5,040</b>	<b>334</b>	<b>6.63%</b>
13TH STREET STATION	142	133	9	6.63%
16TH STREET STATION	528	496	33	6.63%

23RD STREET STATION	130	122	8	6.63%
29TH STREET STATION	355	333	22	6.63%
39TH STREET STATION	90	85	6	6.63%
48TH STREET STATION	71	67	4	6.63%
59TH STREET STATION	69	65	4	6.63%
7TH & CAPITOL STATION	25	23	2	6.63%
7TH & I/COUNTY CENTER STATION	14	13	1	6.63%
8TH & CAPITOL STATION	128	120	8	6.63%
8TH & H STATION	56	53	4	6.63%
8TH & K STATION	290	272	18	6.63%
8TH & O STATION	78	73	5	6.63%
ARCHIVES PLAZA STATION	72	67	4	6.63%
BUTTERFIELD STATION	108	102	7	6.63%
COLLEGE GREENS STATION	310	291	19	6.63%
CORDOVA TOWN CENTER STATION	151	142	9	6.63%
GLENN STATION	30	28	2	6.63%
HAZEL STATION	51	48	3	6.63%
HISTORIC FOLSOM STATION	182	170	11	6.63%
IRON POINT STATION	139	130	9	6.63%
MATHER FIELD/MILLS STATION	457	429	28	6.63%
POWER INN STATION	134	126	8	6.63%
SACRAMENTO VALLEY STATIO	224	210	14	6.63%
SACRAMENTO VALLEY STATION	1	1	0	6.63%
ST ROSE OF LIMA PARK STATION	1	1	0	6.63%
STARFIRE STATION	119	112	7	6.63%
SUNRISE STATION	298	279	19	6.63%
TIBER STATION	84	78	5	6.63%
UNIVERSITY/65TH STREET STATION	379	356	24	6.63%
WATT/MANLOVE STATION	258	242	16	6.63%
ZINFANDEL STATION	401	376	25	6.63%
<b>Final Total - Alightings</b>	<b>10,770</b>	<b>10,100</b>	<b>670</b>	<b>6.63%</b>

\*Station boardings for Feb 19 v Feb 18 used a percentage of total boardings approach that does not account for monthly fluctuations in individual stations.

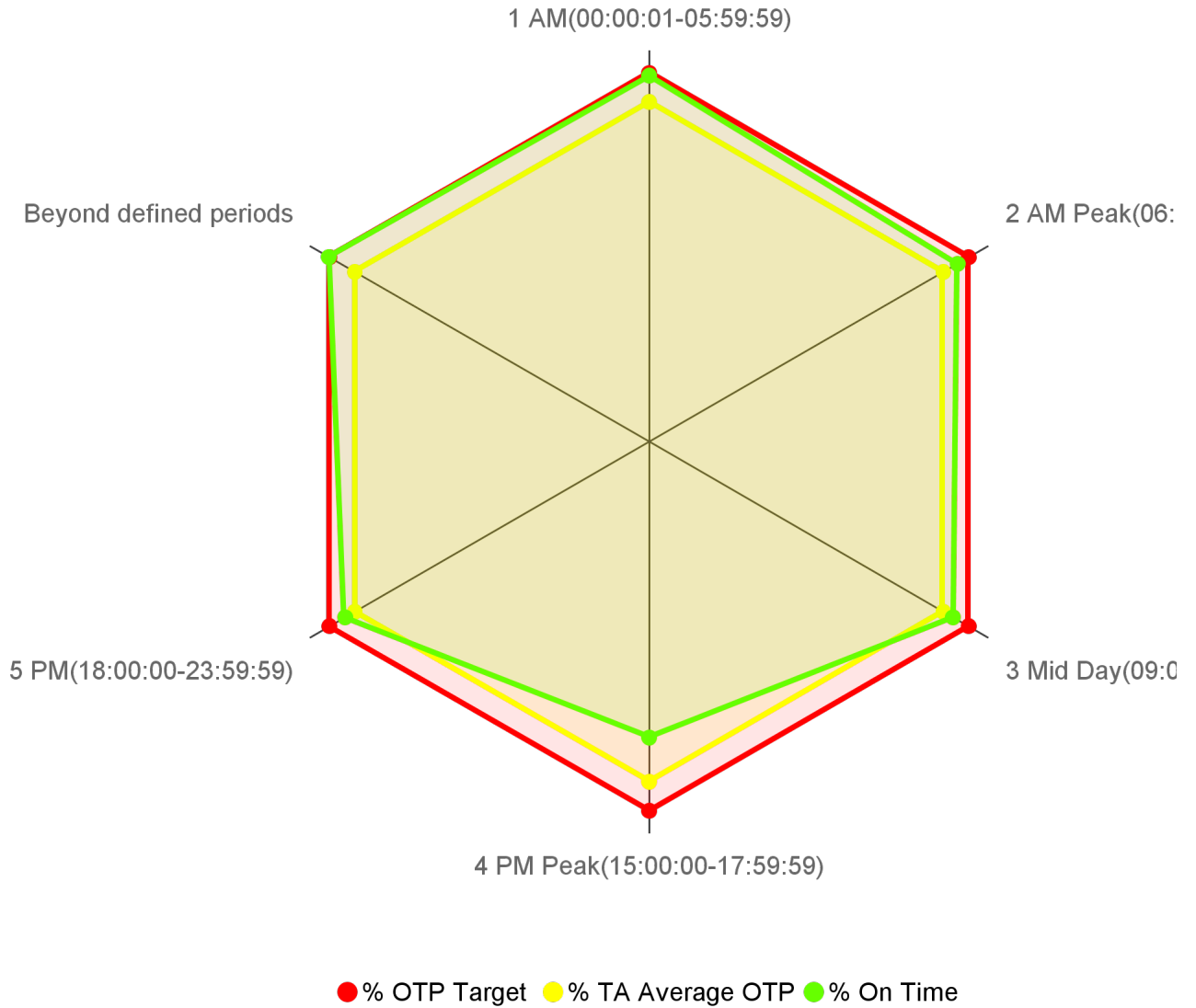
## CR-0105 On Time Performance KPI Trend

On Time Performance



## CR-0104 On Time Performance by Operational Period

On Time Performance by Operational Period

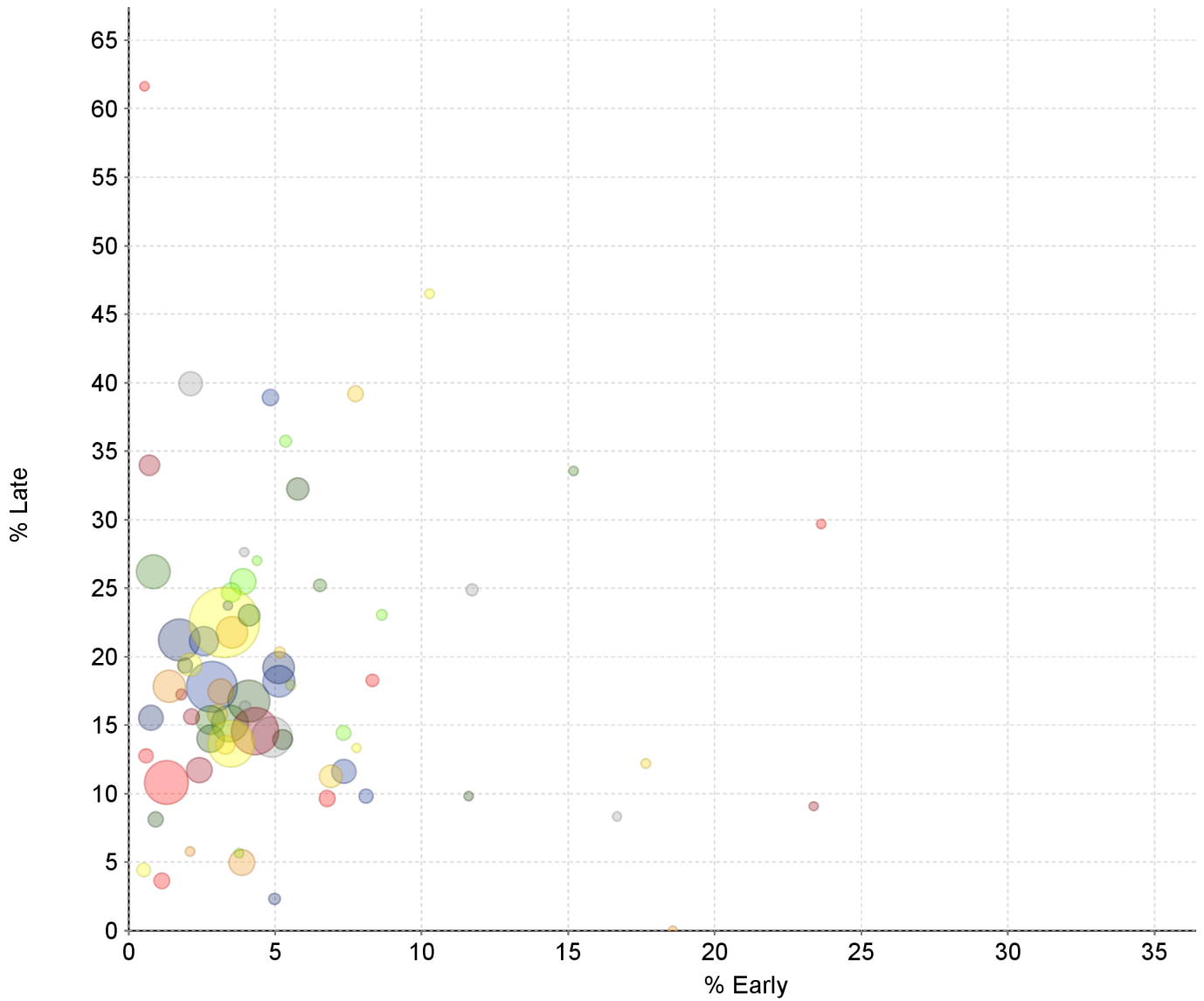


Transit Domain: Bus

Operational Period	% On Time	% TA Average OTP	% OTP Target	# On Time	# Processed
1 AM(00:00:01-05:59:59)	84.33	78.27	85.00	2,819	3,343
2 AM Peak(06:00:00-08:59:59)	82.04	78.27	85.00	43,877	53,480
3 Mid Day(09:00:00-14:59:59)	80.88	78.27	85.00	82,282	101,739
4 PM Peak(15:00:00-17:59:59)	68.15	78.27	85.00	40,856	59,953
5 PM(18:00:00-23:59:59)	80.81	78.27	85.00	36,642	45,346
Beyond defined periods	85.17	78.27	85.00	603	708

### CR-0106 On Time Performance Graph

Shows all Routes together on one chart for easy visual indication of outliers.



Route	% Early	% Late	Timepoints Processed
001 - Greenback	1.30	10.81	11,035
002 - Riverside	2.10	19.40	4,433
003 - Riverside Express	5.36	35.74	859
005 - Meadowview - Valley Hi via Massi	8.11	9.82	1,752
006 - Land Park	4.11	23.02	4,083
007 - Pocket Express	5.16	20.31	640
011 - Truxel Road	2.12	39.93	4,676
013 - Northgate	2.15	15.61	2,229
015 - Rio Linda Blvd - O St	5.12	19.20	7,230
019 - Rio Linda	5.77	32.25	4,261
021 - Sunrise - Citrus Heights	1.39	17.83	7,362
022 - Arden	6.78	9.64	2,302
023 - El Camino	3.50	13.64	11,916
024 - Madison - Greenback	7.34	14.44	1,704
025 - Marconi	5.13	18.22	7,229
026 - Fulton	0.85	26.21	7,784

Route	% Early	% Late	Timepoints Processed
028 - Fair Oaks - Folsom Blvd	3.30	13.57	3,302
029 - Arden - California Ave	3.97	16.38	629
030 - J Street (DASH)	4.32	14.55	12,120
033 - Dos Rios	1.93	19.36	1,968
034 - McKinley	5.26	13.96	3,495
038 - P/Q Streets	3.15	17.46	5,179
047 - Phoenix Park	0.60	12.78	1,675
051 - Broadway - Stockton	3.28	22.49	19,314
054 - Center Parkway	3.50	24.68	3,282
055 - Scottsdale	2.57	21.14	6,462
056 - Pocket - C.R.C.	2.79	15.39	6,265
061 - Fruitridge	3.03	15.77	3,462
062 - Freeport	4.89	14.14	9,886
065 - Delta Shores - Franklin - 65th S	0.71	33.98	3,667
067 - Franklin	1.73	21.22	10,404
068 - 44th Street	4.10	16.76	10,466
072 - Rosemont - Lincoln Village	3.87	4.99	5,327
074 - International	1.14	3.64	2,114
075 - Mather Field	0.52	4.43	1,353
080 - Watt - Elkhorn	3.91	25.49	5,426
081 - Florin - 65th Street	2.85	17.79	13,305
082 - Howe - 65th Street	3.46	15.12	8,767
084 - Watt - North Highlands	6.90	11.27	4,374
085 - McClellan Park	16.67	8.33	60
086 - San Juan - Silver Eagle	2.42	11.72	5,255
087 - Howe	0.76	15.54	5,005
088 - West El Camino	2.80	14.02	5,899
093 - Hillsdale	3.53	21.78	7,286
095 - Citrus Heights-Antelope Rd	8.32	18.27	1,166
103 - Auburn Blvd	5.53	17.92	452
109 - Hazel Express	8.65	23.06	555
170 - JIBE EASTSIDE	4.84	38.91	2,357
171 - JIBE WESTSIDE	6.53	25.20	1,226
172 - JIBE CENTRAL	7.74	39.19	2,118
174 - JIBE MIDWEST	11.72	24.88	1,041
175 - RANCHO CORDOVAN - SUNRIDGE PARK	1.80	17.24	667
176 - RANCHO CORDOVAN - ANATOLIA	4.98	2.32	863
177 - RANCHO CORDOVAN - VILLAGES	0.93	8.13	1,943
205 - Fruitridge Road - Freeport	2.11	5.79	190
206 - 12th Ave - Sutterville Road	23.63	29.67	182
210 - La Riveria Drive	7.78	13.33	90



Route	% Early	% Late	Timepoints Processed
211 - College Greens	4.38	27.01	137
212 - 14th Ave - 21st Ave	3.39	23.73	236
213 - Fruitridge Road - Stockton Blvd	15.19	33.54	158
214 - Broadway - Stockton Blvd	17.65	12.22	221
226 - Pocket Riverside Blvd	3.95	27.63	76
227 - South Land Park - Greenhaven Dri	23.38	9.09	77
228 - Gloria Drive - Rush River Drive	38.95	5.26	95
246 - Meadowview - Greenhaven	11.61	9.82	112
247 - 21st Street - Florin Road	18.57	0.00	70
248 - Meadowview - Rush River	0.54	61.62	185
252 - Freeport - Fruitridge - ML King	10.27	46.49	185
255 - La Riveria - College Greens	3.77	5.66	106
051X - W/X	7.35	11.62	4,819

### CR-0103 Overall On Time

Overall On Time Timepoints

On Time	Early	Late	Timepoints Processed
<b>78.27%</b>	<b>3.53%</b>	<b>18.20%</b>	<b>264,569</b>