



# Ridership Report

## Current Month & Fiscal YTD Summary

April 2019					
	Average Daily Boardings			Monthly	YTD
	Weekday	Saturday	Sunday		
Days	22	4	4	30	
<b>Bus</b>	35,451	12,083	7,169	858,760	8,307,344
Full-Size Bus	33,782	12,083	7,169	820,224	
Community Bus	967			21,269	
SmaRT Ride	374			8,226	
Folsom Service	328			7,216	
Special Service*				1,825	
<b>Light Rail</b>	40,244	15,467	12,757	999,923	8,994,287
Blue Line	20,548	7,922	6,250	508,744	
Gold Line	19,076	7,545	6,507	475,880	
Green Line	620			13,640	
Special Service*				1,659	
<b>System Total</b>	75,695	27,550	19,926	1,858,683	17,301,631

April 2019				
KPI Comparison - Average Weekday Boardings				
	Actual	KPI Goal	Difference	Percent Difference
Bus Avg Weekday	35,451	33,539	1,912	5.7%
Rail Avg Weekday	40,244	36,894	3,350	9.1%
Monthly Total	1,858,683	1,717,476	141,207	8.2%
Total YTD	17,301,631	16,406,223	895,408	5.5%

April 2018					
	Average Daily Boardings			Monthly	YTD
	Weekday	Saturday	Sunday		
Days	21	4	5	30	
<b>Bus</b>	35,930	11,820	7,339	840,187	8,526,579
Full-Size Bus	35,069	11,820	7,339		
Community Bus	861				
Special Service*				1,683	
<b>Light Rail</b>	36,550	13,500	9,100	868,596	8,940,657
Blue Line	19,200	6,900	4,600		
Gold Line	16,900	6,600	4,500		
Green Line	450				
Golden 1 Service				1,546	
<b>System Total</b>	72,480	25,320	16,439	1,708,783	17,467,236

% Change FY 2019/2018					
	Average Daily Boardings			Monthly	YTD
	Weekday	Saturday	Sunday		
Total Bus	-1.3%	2.2%	-2.3%	2.2%	-2.6%
Light Rail	10.1%	14.6%	40.2%	15.1%	0.6%
System Total	4.4%	8.8%	21.2%	8.8%	-0.9%

## Route Level Ridership Comparison (Fixed Route Bus)

### Weekday Route Comparison

Route	Apr 2019	Apr 2018	Difference	% Change
1	1,698	2,084	(386)	-19%
2	374	440	(66)	-15%
3	189	190	(1)	0%
5	200	211	(12)	-5%
6	306	336	(30)	-9%
7	106	124	(18)	-15%
11	608	615	(8)	-1%
13	259	325	(65)	-20%
15	1,083	1,095	(12)	-1%
19	597	665	(68)	-10%
21	986	1,064	(79)	-7%
22	242	255	(13)	-5%
23	1,510	1,596	(87)	-5%
24	148	150	(2)	-1%
25	961	968	(7)	-1%
26	1,030	1,057	(27)	-3%
28	317	341	(24)	-7%
29	107	121	(14)	-12%
30	2,045	1,921	124	6%
33	230	212	18	9%
34	246	267	(21)	-8%
38	396	389	6	2%
47	113	120	(7)	-6%
51	2,982	3,305	(323)	-10%
54	256	307	(51)	-17%
55	690	679	11	2%
56	956	1,049	(93)	-9%
61	481	527	(45)	-9%
62	955	1,147	(192)	-17%
65	399	399	(0)	0%
67	1,064	1,173	(109)	-9%
68	1,086	1,176	(89)	-8%
72	981	1,018	(37)	-4%
74	165	203	(38)	-19%
75	143	184	(41)	-22%
80	878	917	(39)	-4%
81	2,398	2,586	(188)	-7%
82	1,602	1,842	(240)	-13%
84	741	717	24	3%
85	-	25		
86	1,052	1,047	4	0%
87	1,226	1,220	6	0%
88	750	761	(11)	-1%
93	746	824	(78)	-9%
95	60	58	2	3%
103	63	70	(8)	-11%
109	102	101	1	1%
170	209	114	95	83%
171	74	95	(20)	-22%
172	143	137	6	4%
175	26	25	1	2%
176	40	33	7	20%
177	112	94	18	19%
205	32	31	1	2%
206	24	35	(11)	-32%
210	36	49	(12)	-25%
211	85	91	(6)	-7%
212	78	50	28	56%
214	26	19	7	40%
227	17	17	0	0%
228	27	14	13	91%
246	39	41	(1)	-3%
248	26	20	7	35%
252	35	37	(2)	-5%
255	40	55	(16)	-28%

### Saturday Route Comparison

Route	Apr 2019	Apr 2018	Difference	% Change
1	725	777	(52)	-7%
11	247	266	(19)	-7%
15	480	462	18	4%
19	246	261	(15)	-6%
21	496	499	(3)	-1%
23	1,026	1,033	(7)	-1%
25	358	344	14	4%
26	249	278	(29)	-11%
30	526	488	38	8%
38	171	146	24	17%
51	1,453	1,462	(9)	-1%
54	80	104	(24)	-23%
55	209	216	(8)	-4%
56	477	456	21	5%
62	289	307	(18)	-6%
67	289	307	(18)	-6%
68	502	529	(28)	-5%
72	212	240	(28)	-11%
75	98	123	(25)	-21%
80	595	597	(2)	0%
81	1,043	1,045	(1)	0%
82	461	518	(57)	-11%
84	328	303	25	8%
86	357	307	51	17%
87	415	384	31	8%
88	249	236	13	6%
93	274	252	22	9%

### Sunday Route Comparison

Route	Apr 2019	Apr 2018	Difference	% Change
1	508	588	(80)	-14%
15	370	377	(7)	-2%
19	207	232	(25)	-11%
21	315	336	(21)	-6%
23	611	657	(46)	-7%
26	184	186	(2)	-1%
30	240	234	6	3%
38	118	130	(12)	-9%
51	982	1,109	(127)	-11%
55	123	131	(8)	-6%
56	267	265	1	1%
67	365	404	(39)	-10%
68	385	463	(78)	-17%
72	157	147	10	7%
75	80	90	(9)	-11%
80	433	437	(4)	-1%
81	567	580	(13)	-2%
82	348	415	(67)	-16%
86	257	224	34	15%
87	251	221	30	14%
88	205	199	6	3%
93	196	218	(22)	-10%

Please note:

Route totals do not add up to monthly totals. Route by Route comparisons are only shown for routes that operated in each year. Additionally special service routes are not included on this page.

## Average Weekday Boardings by Station by Line

Station Name	Apr19	Apr18	Difference	% Change
<b>BLUE LINE - Total</b>	<b>20,548</b>	<b>19,200</b>	<b>1,348</b>	<b>7.02%</b>
12TH & I STATION	520	483	37	7.60%
13TH STREET STATION	569	534	35	6.58%
16TH STREET STATION	1,808	1,657	150	9.07%
47TH AVENUE STATION	609	569	40	6.96%
4TH AVE/WAYNE HULTGREN STATION	613	565	48	8.48%
7TH & CAPITOL STATION	781	745	36	4.87%
8TH & CAPITOL STATION	431	402	29	7.32%
8TH & O STATION	824	788	36	4.60%
ALKALI FLAT/LA VALENTINA STA	767	710	57	8.08%
ARCHIVES PLAZA STATION	583	528	55	10.46%
ARDEN/DEL PASO STATION	867	810	57	7.08%
BROADWAY STATION	734	675	60	8.82%
CATHEDRAL SQUARE STATION	942	802	139	17.37%
CENTER PARKWAY STATION	295	272	23	8.29%
CITY COLLEGE STATION	1,074	941	133	14.14%
CRC STATION	1,394	1,349	45	3.34%
FLORIN STATION	975	921	54	5.81%
FRANKLIN STATION	732	723	8	1.17%
FRUITRIDGE STATION	491	464	28	5.94%
GLOBE AVENUE STATION	320	268	52	19.58%
MARCONI/ARCADE STATION	756	721	35	4.89%
MEADOWVIEW STATION	925	914	11	1.20%
ROSEVILLE ROAD STATION	651	657	(5)	-0.82%
ROYAL OAKS STATION	431	407	24	5.90%
ST ROSE OF LIMA PARK STATION	671	617	54	8.81%
SWANSTON STATION	321	255	66	26.07%
Watt/I-80 Station	1,235	1,208	27	2.22%
WATT/I-80 WEST STATION	136	140	(4)	-2.75%
<b>GOLD LINE - Total</b>	<b>19,076</b>	<b>16,900</b>	<b>2,176</b>	<b>12.88%</b>
13TH STREET STATION	689	621	69	11.05%
16TH STREET STATION	1,784	1,610	175	10.84%
23RD STREET STATION	586	480	106	22.09%
29TH STREET STATION	1,506	1,356	150	11.04%
39TH STREET STATION	298	262	36	13.67%
48TH STREET STATION	256	219	38	17.18%
59TH STREET STATION	304	244	60	24.43%
7TH & CAPITOL STATION	973	891	82	9.16%
7TH & I/COUNTY CENTER STATION	346	339	7	2.10%
8TH & CAPITOL STATION	59	53	5	10.06%
8TH & H STATION	83	74	9	12.43%
8TH & K STATION	85	76	9	11.53%
8TH & O STATION	784	716	69	9.59%
ARCHIVES PLAZA STATION	685	579	105	18.13%
BUTTERFIELD STATION	583	507	76	15.09%
COLLEGE GREENS STATION	674	605	70	11.50%
CORDOVA TOWN CENTER STATION	492	443	50	11.19%
GLENN STATION	269	242	26	10.89%
HAZEL STATION	164	159	5	3.42%

HISTORIC FOLSOM STATION	509	463	45	9.81%
IRON POINT STATION	465	427	38	8.95%
MATHER FIELD/MILLS STATION	1,419	1,257	161	12.82%
POWER INN STATION	550	493	57	11.66%
SACRAMENTO VALLEY STATION	602	480	121	25.25%
STARFIRE STATION	317	283	35	12.35%
SUNRISE STATION	880	772	108	14.03%
TIBER STATION	303	271	32	11.77%
UNIVERSITY/65TH STREET STATION	1,517	1,305	212	16.27%
WATT/MANLOVE STATION	1,078	943	135	14.31%
ZINFANDEL STATION	799	720	80	11.06%
<b>GREEN LINE - Total</b>	<b>620</b>	<b>450</b>	<b>170</b>	<b>37.78%</b>
13TH STREET STATION	135	104	31	30.03%
7TH & CAPITOL STATION	26	29	(3)	-11.23%
7TH & I/COUNTY CENTER STATION	45	28	18	63.42%
8TH & CAPITOL STATION	31	20	11	53.36%
8TH & K STATION	112	55	57	104.52%
8TH & O STATION	24	25	(1)	-5.84%
ARCHIVES PLAZA STATION	31	28	3	10.79%
TOWNSHIP 9 STATION	215	161	54	33.90%
<b>All Stations</b>	<b>40,244</b>	<b>36,550</b>	<b>3,694</b>	<b>10.11%</b>

## Average Weekday Alightings by Station by Line

Station Name	Apr19	Apr18	Difference	% Change
<b>BLUE LINE - Rt#533</b>	<b>19,860</b>	<b>17,969</b>	<b>1,891</b>	<b>10.52%</b>
12TH & I STATION	497	480	16	3.42%
13TH STREET STATION	568	524	44	8.46%
16TH STREET STATION	1,737	1,600	136	8.52%
47TH AVENUE STATION	578	550	28	5.02%
4TH AVE/WAYNE HULTGREN STATION	538	432	106	24.47%
7TH & CAPITOL STATION	660	618	42	6.79%
8TH & CAPITOL STATION	511	473	38	8.05%
8TH & O STATION	695	679	16	2.39%
ALKALI FLAT/LA VALENTINA STATION	696	666	29	4.42%
ARCHIVES PLAZA STATION	463	459	4	0.96%
ARDEN/DEL PASO STATION	910	799	112	13.97%
BROADWAY STATION	728	657	71	10.89%
CATHEDRAL SQUARE STATION	881	793	88	11.15%
CENTER PARKWAY STATION	233	206	26	12.79%
CITY COLLEGE STATION	1,020	813	208	25.56%
CRC STATION	1,523	1,335	188	14.07%
FLORIN STATION	982	873	110	12.55%
FRANKLIN STATION	730	654	76	11.67%
FRUITRIDGE STATION	494	433	60	13.94%
GLOBE AVENUE STATION	305	262	42	16.17%
MARCONI/ARCADE STATION	681	653	28	4.34%
MEADOWVIEW STATION	941	853	89	10.39%
ROSEVILLE ROAD STATION	709	631	78	12.40%
ROYAL OAKS STATION	414	386	27	7.08%
ST ROSE OF LIMA PARK STATION	520	491	29	5.98%
SWANSTON STATION	300	246	54	21.81%
Watt/I-80 Station	1,304	1,199	105	8.78%
WATT/I-80 WEST STATION	160	135	25	18.84%
<b>GOLD LINE - Rt#507</b>	<b>19,738</b>	<b>18,039</b>	<b>1,699</b>	<b>9.42%</b>
13TH STREET STATION	589	548	41	7.42%
16TH STREET STATION	1,894	1,734	159	9.19%
23RD STREET STATION	569	501	68	13.57%
29TH STREET STATION	1,520	1,420	100	7.05%
39TH STREET STATION	295	273	21	7.82%
48TH STREET STATION	267	252	15	5.79%
59TH STREET STATION	309	277	32	11.67%
7TH & CAPITOL STATION	53	60	(6)	-10.73%
7TH & I/COUNTY CENTER STATION	26	26	(0)	-1.20%
8TH & CAPITOL STATION	741	693	48	6.88%
8TH & H STATION	373	351	22	6.37%
8TH & K STATION	733	685	48	6.96%
8TH & O STATION	732	668	64	9.60%
ARCHIVES PLAZA STATION	692	630	62	9.81%
BUTTERFIELD STATION	562	525	37	6.96%
COLLEGE GREENS STATION	672	621	51	8.25%
CORDOVA TOWN CENTER STATION	476	442	34	7.78%
GLENN STATION	250	246	3	1.35%

HAZEL STATION	168	163	5	3.21%
HISTORIC FOLSOM STATION	517	489	27	5.52%
IRON POINT STATION	460	440	20	4.48%
MATHER FIELD/MILLS STATION	1,388	1,281	106	8.30%
POWER INN STATION	554	518	36	6.95%
SACRAMENTO VALLEY STATION	470	442	28	6.26%
SACRAMENTO VALLEY STATION	366	243	123	50.70%
STARFIRE STATION	309	267	43	16.05%
SUNRISE STATION	883	796	87	10.93%
TIBER STATION	305	278	27	9.82%
UNIVERSITY/65TH STREET STATION	1,634	1,391	243	17.47%
WATT/MANLOVE STATION	1,086	995	90	9.08%
ZINFANDEL STATION	844	779	65	8.33%
<b>GREEN LINE - Rt#519</b>	<b>646</b>	<b>542</b>	<b>104</b>	<b>19.20%</b>
13TH STREET STATION	207	175	33	18.87%
7TH & CAPITOL STATION	50	44	7	15.00%
7TH & I/COUNTY CENTER STATIO	68	60	8	13.72%
8TH & CAPITOL STATION	11	11	(0)	-0.08%
8TH & K STATION	57	32	25	76.64%
8TH & O STATION	25	27	(2)	-6.50%
ARCHIVES PLAZA STATION	34	28	6	22.56%
TOWNSHIP 9 STATION	193	166	27	16.32%

## Average Saturday Boardings by Station by Line

Station Name	Apr19	Apr18	Difference	% Change
<b>BLUE LINE - Rt#533</b>	<b>7,922</b>	<b>6,900</b>	<b>1,022</b>	<b>14.81%</b>
12TH & I STATION	189	140	49	35.21%
13TH STREET STATION	226	176	51	29.00%
16TH STREET STATION	740	630	110	17.53%
47TH AVENUE STATION	202	172	31	17.95%
4TH AVE/WAYNE HULTGREN STATION	150	125	25	19.96%
7TH & CAPITOL STATION	350	298	52	17.38%
8TH & CAPITOL STATION	69	75	(6)	-8.23%
8TH & O STATION	109	97	12	12.20%
ALKALI FLAT/LA VALENTINA STATION	414	339	75	22.09%
ARCHIVES PLAZA STATION	107	70	38	54.21%
ARDEN/DEL PASO STATION	451	412	39	9.54%
BROADWAY STATION	309	321	(12)	-3.89%
CATHEDRAL SQUARE STATION	353	302	51	16.86%
CENTER PARKWAY STATION	169	120	49	40.94%
CITY COLLEGE STATION	240	195	45	22.96%
CRC STATION	498	467	31	6.66%
FLORIN STATION	416	379	37	9.76%
FRANKLIN STATION	178	173	5	2.83%
FRUITRIDGE STATION	234	194	40	20.69%
GLOBE AVENUE STATION	132	108	24	21.72%
MARCONI/ARCADE STATION	326	322	4	1.29%
MEADOWVIEW STATION	406	357	49	13.74%
ROSEVILLE ROAD STATION	116	95	22	22.71%
ROYAL OAKS STATION	298	240	58	24.19%
ST ROSE OF LIMA PARK STATION	326	322	5	1.43%
SWANSTON STATION	132	104	28	26.82%
Watt/I-80 Station	681	603	78	12.98%
WATT/I-80 WEST STATION	37	20	17	82.69%
<b>GOLD LINE - Rt#507</b>	<b>7,545</b>	<b>6,600</b>	<b>945</b>	<b>14.32%</b>
13TH STREET STATION	195	193	2	0.97%
16TH STREET STATION	779	632	147	23.22%
23RD STREET STATION	183	158	25	15.50%
29TH STREET STATION	528	481	48	9.88%
39TH STREET STATION	129	104	24	23.35%
48TH STREET STATION	124	88	36	40.84%
59TH STREET STATION	119	97	22	22.47%
7TH & CAPITOL STATION	298	315	(18)	-5.55%
7TH & I/COUNTY CENTER STATION	120	99	21	21.20%
8TH & CAPITOL STATION	35	27	9	32.63%
8TH & H STATION	33	27	7	25.80%
8TH & K STATION	51	53	(2)	-2.90%
8TH & O STATION	129	106	23	21.57%
ARCHIVES PLAZA STATION	83	85	(3)	-3.23%
BUTTERFIELD STATION	165	133	32	24.17%
COLLEGE GREENS STATION	441	385	56	14.45%
CORDOVA TOWN CENTER STATION	222	193	30	15.40%
GLENN STATION	52	54	(2)	-3.33%

HAZEL STATION	71	64	7	10.53%
HISTORIC FOLSOM STATION	225	230	(5)	-2.18%
IRON POINT STATION	206	181	25	13.78%
MATHER FIELD/MILLS STATION	690	579	111	19.13%
POWER INN STATION	199	177	22	12.16%
SACRAMENTO VALLEY STATION	313	271	42	15.53%
ST ROSE OF LIMA PARK STATION	8	4	4	90.27%
STARFIRE STATION	181	154	27	17.22%
SUNRISE STATION	363	311	52	16.62%
TIBER STATION	161	124	37	30.26%
UNIVERSITY/65TH STREET STATION	553	471	82	17.52%
WATT/MANLOVE STATION	370	334	36	10.88%
ZINFANDEL STATION	519	469	49	10.51%
<b>Final Total - Boardings</b>	<b>15,467</b>	<b>13,500</b>	<b>1,967</b>	<b>14.57%</b>

### Average Saturday Alightings by Station by Line

Station Name	Apr19	Apr18	Difference	% Change
<b>BLUE LINE - Rt#533</b>	<b>6,641</b>	<b>6,775</b>	<b>(134)</b>	<b>-1.98%</b>
12TH & I STATION	137	132	5	3.82%
13TH STREET STATION	186	177	9	5.23%
16TH STREET STATION	679	667	13	1.88%
47TH AVENUE STATION	163	170	(7)	-4.00%
4TH AVE/WAYNE HULTGREN STATION	112	119	(7)	-5.91%
7TH & CAPITOL STATION	214	216	(2)	-0.79%
8TH & CAPITOL STATION	95	111	(16)	-14.17%
8TH & O STATION	74	91	(17)	-18.38%
ALKALI FLAT/LA VALENTINA STATION	319	332	(14)	-4.09%
ARCHIVES PLAZA STATION	74	54	20	37.40%
ARDEN/DEL PASO STATION	402	412	(10)	-2.42%
BROADWAY STATION	329	340	(11)	-3.37%
CATHEDRAL SQUARE STATION	321	327	(6)	-1.84%
CENTER PARKWAY STATION	93	105	(12)	-11.28%
CITY COLLEGE STATION	187	172	15	8.50%
CRC STATION	479	482	(3)	-0.56%
FLORIN STATION	361	387	(26)	-6.64%
FRANKLIN STATION	137	142	(5)	-3.48%
FRUITRIDGE STATION	173	177	(5)	-2.66%
GLOBE AVENUE STATION	118	112	6	5.71%
MARCONI/ARCADE STATION	280	309	(29)	-9.32%
MEADOWVIEW STATION	344	348	(4)	-1.10%
ROSEVILLE ROAD STATION	103	103	1	0.52%
ROYAL OAKS STATION	253	262	(9)	-3.44%
ST ROSE OF LIMA PARK STATION	226	246	(20)	-8.26%
SWANSTON STATION	82	91	(8)	-9.03%
Watt/I-80 Station	648	635	13	2.09%
WATT/I-80 WEST STATION	15	16	(0)	-2.07%
<b>GOLD LINE - Rt#507</b>	<b>8,826</b>	<b>6,725</b>	<b>2,101</b>	<b>31.24%</b>
13TH STREET STATION	205	177	28	16.04%
16TH STREET STATION	937	688	249	36.26%



23RD STREET STATION	212	163	49	29.78%
29TH STREET STATION	588	442	145	32.82%
39TH STREET STATION	108	90	18	19.86%
48TH STREET STATION	131	94	37	39.92%
59TH STREET STATION	115	84	31	36.83%
7TH & CAPITOL STATION	29	26	3	9.58%
7TH & I/COUNTY CENTER STATION	20	17	2	13.83%
8TH & CAPITOL STATION	174	159	14	9.04%
8TH & H STATION	96	75	21	28.56%
8TH & K STATION	403	355	48	13.44%
8TH & O STATION	110	89	21	23.64%
ARCHIVES PLAZA STATION	117	89	28	31.39%
BUTTERFIELD STATION	206	133	73	54.88%
COLLEGE GREENS STATION	514	380	135	35.48%
CORDOVA TOWN CENTER STATION	264	200	64	32.07%
GLENN STATION	53	45	8	17.53%
HAZEL STATION	80	61	19	30.35%
HISTORIC FOLSOM STATION	295	253	42	16.67%
IRON POINT STATION	252	188	64	34.16%
MATHER FIELD/MILLS STATION	857	604	253	41.91%
POWER INN STATION	200	156	44	28.57%
SACRAMENTO VALLEY STATIO	329	276	53	19.18%
SACRAMENTO VALLEY STATION	-	4	(4)	-100.00%
ST ROSE OF LIMA PARK STATION	1	0	0	45.06%
STARFIRE STATION	212	155	57	36.70%
SUNRISE STATION	455	328	126	38.53%
TIBER STATION	167	114	53	46.15%
UNIVERSITY/65TH STREET STATION	632	474	158	33.31%
WATT/MANLOVE STATION	412	318	95	29.80%
ZINFANDEL STATION	653	487	165	33.97%
<b>Final Total - Alightings</b>	<b>15,467</b>	<b>13,500</b>	<b>1,967</b>	<b>14.57%</b>

## Average Sunday Boardings by Station by Line

Station Name	Apr19	Apr18	Difference	% Change
<b>BLUE LINE - Rt#533</b>	<b>6,250</b>	<b>4,600</b>	<b>1,650</b>	<b>35.87%</b>
12TH & I STATION	149	100	49	49.56%
13TH STREET STATION	133	117	16	13.69%
16TH STREET STATION	553	420	133	31.58%
47TH AVENUE STATION	175	123	52	42.24%
4TH AVE/WAYNE HULTGREN STATION	100	79	21	25.89%
7TH & CAPITOL STATION	245	197	48	24.58%
8TH & CAPITOL STATION	57	51	6	12.22%
8TH & O STATION	99	69	30	42.70%
ALKALI FLAT/LA VALENTINA STATION	324	232	92	39.76%
ARCHIVES PLAZA STATION	67	41	26	64.12%
ARDEN/DEL PASO STATION	325	271	54	19.75%
BROADWAY STATION	257	215	42	19.28%
CATHEDRAL SQUARE STATION	278	216	62	28.54%
CENTER PARKWAY STATION	115	79	37	46.59%
CITY COLLEGE STATION	171	109	63	57.65%
CRC STATION	404	293	111	38.02%
FLORIN STATION	363	270	93	34.54%
FRANKLIN STATION	245	133	113	84.75%
FRUITRIDGE STATION	182	131	51	39.03%
GLOBE AVENUE STATION	125	82	43	51.56%
MARCONI/ARCADE STATION	201	174	27	15.83%
MEADOWVIEW STATION	338	236	102	43.25%
ROSEVILLE ROAD STATION	110	73	37	51.22%
ROYAL OAKS STATION	240	176	64	36.09%
ST ROSE OF LIMA PARK STATION	311	218	94	43.03%
SWANSTON STATION	84	63	21	33.32%
Watt/I-80 Station	521	389	132	33.80%
WATT/I-80 WEST STATION	26	13	12	93.29%
<b>GOLD LINE - Rt#507</b>	<b>6,507</b>	<b>4,500</b>	<b>2,007</b>	<b>44.60%</b>
13TH STREET STATION	220	142	77	54.48%
16TH STREET STATION	581	421	160	38.04%
23RD STREET STATION	136	102	35	33.95%
29TH STREET STATION	438	315	123	39.12%
39TH STREET STATION	113	70	43	60.89%
48TH STREET STATION	74	56	18	32.07%
59TH STREET STATION	103	60	43	72.04%
7TH & CAPITOL STATION	299	213	86	40.26%
7TH & I/COUNTY CENTER STATION	108	73	35	48.67%
8TH & CAPITOL STATION	22	18	3	18.50%
8TH & H STATION	45	21	23	110.15%
8TH & K STATION	40	34	6	18.76%
8TH & O STATION	97	76	22	28.79%
ARCHIVES PLAZA STATION	104	54	50	91.91%
BUTTERFIELD STATION	136	94	42	44.83%
COLLEGE GREENS STATION	369	264	105	39.99%
CORDOVA TOWN CENTER STATION	208	137	71	52.03%
GLENN STATION	61	31	30	95.45%

HAZEL STATION	82	43	39	91.16%
HISTORIC FOLSOM STATION	282	149	133	88.99%
IRON POINT STATION	178	118	60	50.82%
MATHER FIELD/MILLS STATION	509	400	109	27.16%
POWER INN STATION	148	111	37	33.12%
SACRAMENTO VALLEY STATION	304	202	102	50.40%
STARFIRE STATION	162	111	51	46.18%
SUNRISE STATION	334	224	111	49.44%
TIBER STATION	120	81	39	47.67%
UNIVERSITY/65TH STREET STATION	464	335	130	38.77%
WATT/MANLOVE STATION	307	220	88	39.85%
ZINFANDEL STATION	456	326	130	39.77%
<b>Final Total - Boardings</b>	<b>12,757</b>	<b>9,100</b>	<b>3,657</b>	<b>40.19%</b>

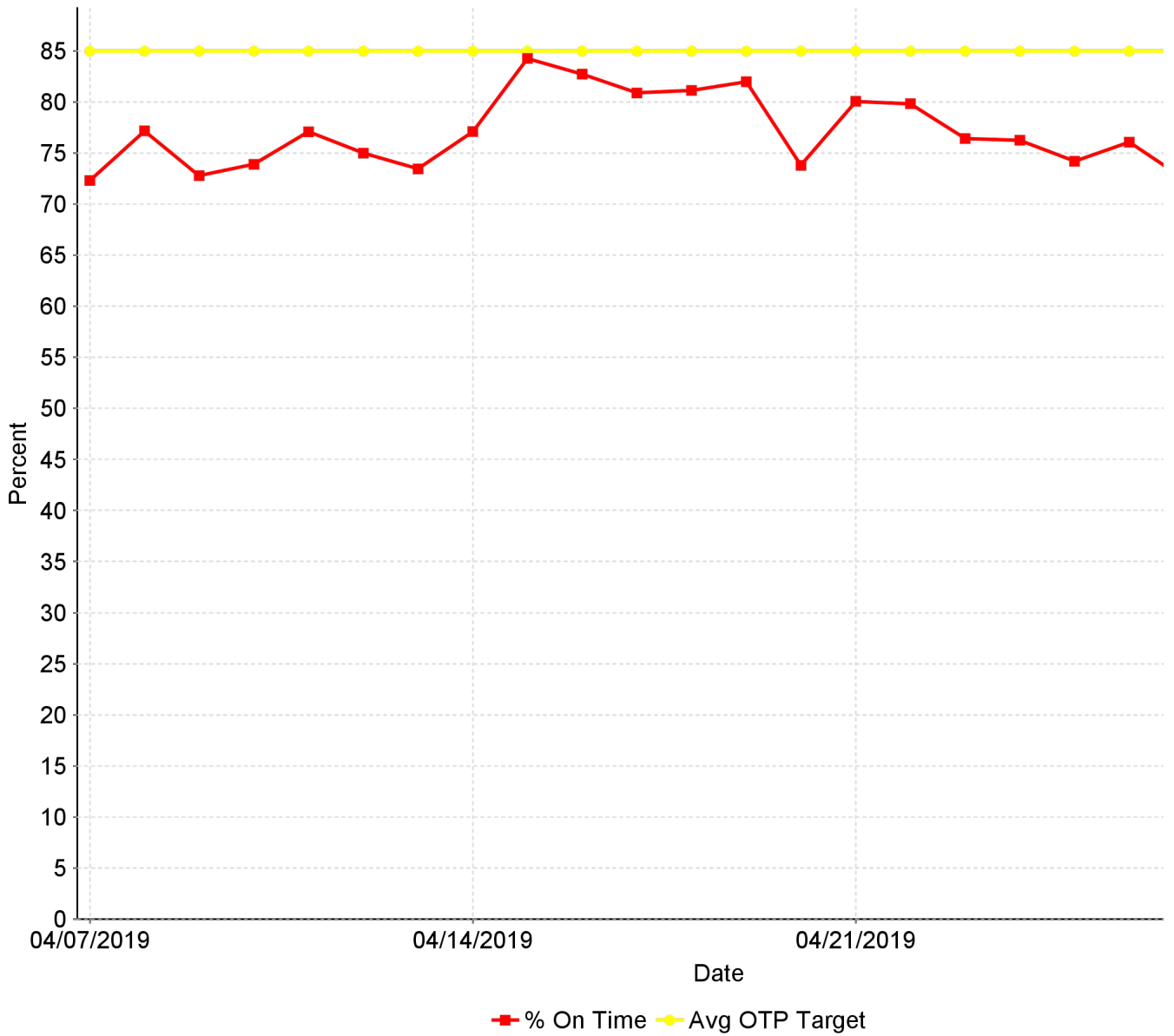
### Average Sunday Alightings by Station by Line

Station Name	Apr19	Apr18	Difference	% Change
<b>BLUE LINE - Rt#533</b>	<b>5,853</b>	<b>4,559</b>	<b>1,294</b>	<b>28.38%</b>
12TH & I STATION	114	88	26	29.12%
13TH STREET STATION	132	123	8	6.74%
16TH STREET STATION	610	459	151	32.89%
47TH AVENUE STATION	145	122	23	18.45%
4TH AVE/WAYNE HULTGREN STATION	81	75	6	8.07%
7TH & CAPITOL STATION	197	151	46	30.70%
8TH & CAPITOL STATION	108	78	30	38.79%
8TH & O STATION	73	61	12	19.94%
ALKALI FLAT/LA VALENTINA STATION	310	241	69	28.40%
ARCHIVES PLAZA STATION	51	37	14	37.45%
ARDEN/DEL PASO STATION	320	265	55	20.82%
BROADWAY STATION	277	230	47	20.61%
CATHEDRAL SQUARE STATION	264	213	52	24.19%
CENTER PARKWAY STATION	89	69	20	29.60%
CITY COLLEGE STATION	201	109	93	85.14%
CRC STATION	382	303	79	26.23%
EMPLOYEE PLATFORM STATION	33	27	6	21.08%
FLORIN STATION	348	278	70	25.29%
FRANKLIN STATION	164	110	54	48.69%
FRUITRIDGE STATION	174	128	45	35.51%
GLOBE AVENUE STATION	89	72	17	23.32%
MARCONI/ARCADE STATION	210	173	37	21.40%
MEADOWVIEW STATION	284	231	52	22.70%
ROSEVILLE ROAD STATION	89	69	20	28.66%
ROYAL OAKS STATION	236	189	47	24.65%
ST ROSE OF LIMA PARK STATION	221	160	60	37.60%
SWANSTON STATION	86	65	21	31.75%
Watt/I-80 Station	549	424	126	29.62%
WATT/I-80 WEST STATION	17	9	9	101.12%
<b>GOLD LINE - Rt#507</b>	<b>6,904</b>	<b>4,541</b>	<b>2,363</b>	<b>52.04%</b>
13TH STREET STATION	170	120	50	41.49%
16TH STREET STATION	659	446	212	47.55%

23RD STREET STATION	180	110	71	64.28%
29TH STREET STATION	432	300	132	43.92%
39TH STREET STATION	115	76	39	50.95%
48TH STREET STATION	83	60	23	38.45%
59TH STREET STATION	84	58	26	44.78%
7TH & CAPITOL STATION	30	21	9	42.84%
7TH & I/COUNTY CENTER STATION	16	12	5	41.84%
8TH & CAPITOL STATION	154	108	46	42.83%
8TH & H STATION	68	48	20	41.91%
8TH & K STATION	321	245	76	31.16%
8TH & O STATION	85	66	19	28.51%
ARCHIVES PLAZA STATION	93	60	32	53.68%
BUTTERFIELD STATION	125	91	34	37.09%
COLLEGE GREENS STATION	383	262	121	46.27%
CORDOVA TOWN CENTER STATION	214	128	86	67.18%
GLENN STATION	55	25	30	118.48%
HAZEL STATION	75	43	32	75.09%
HISTORIC FOLSOM STATION	315	154	161	105.12%
IRON POINT STATION	195	117	77	66.12%
MATHER FIELD/MILLS STATION	617	386	231	59.74%
POWER INN STATION	149	113	36	31.63%
SACRAMENTO VALLEY STATIO	283	189	94	49.58%
SACRAMENTO VALLEY STATION	-	1	(1)	-100.00%
ST ROSE OF LIMA PARK STATION	2	1	1	193.86%
STARFIRE STATION	154	101	54	53.34%
SUNRISE STATION	416	252	164	65.36%
TIBER STATION	104	71	33	46.50%
UNIVERSITY/65TH STREET STATION	488	321	167	52.21%
WATT/MANLOVE STATION	336	218	118	54.23%
ZINFANDEL STATION	502	338	164	48.42%
<b>Final Total - Alightings</b>	<b>12,757</b>	<b>9,100</b>	<b>3,657</b>	<b>40.19%</b>

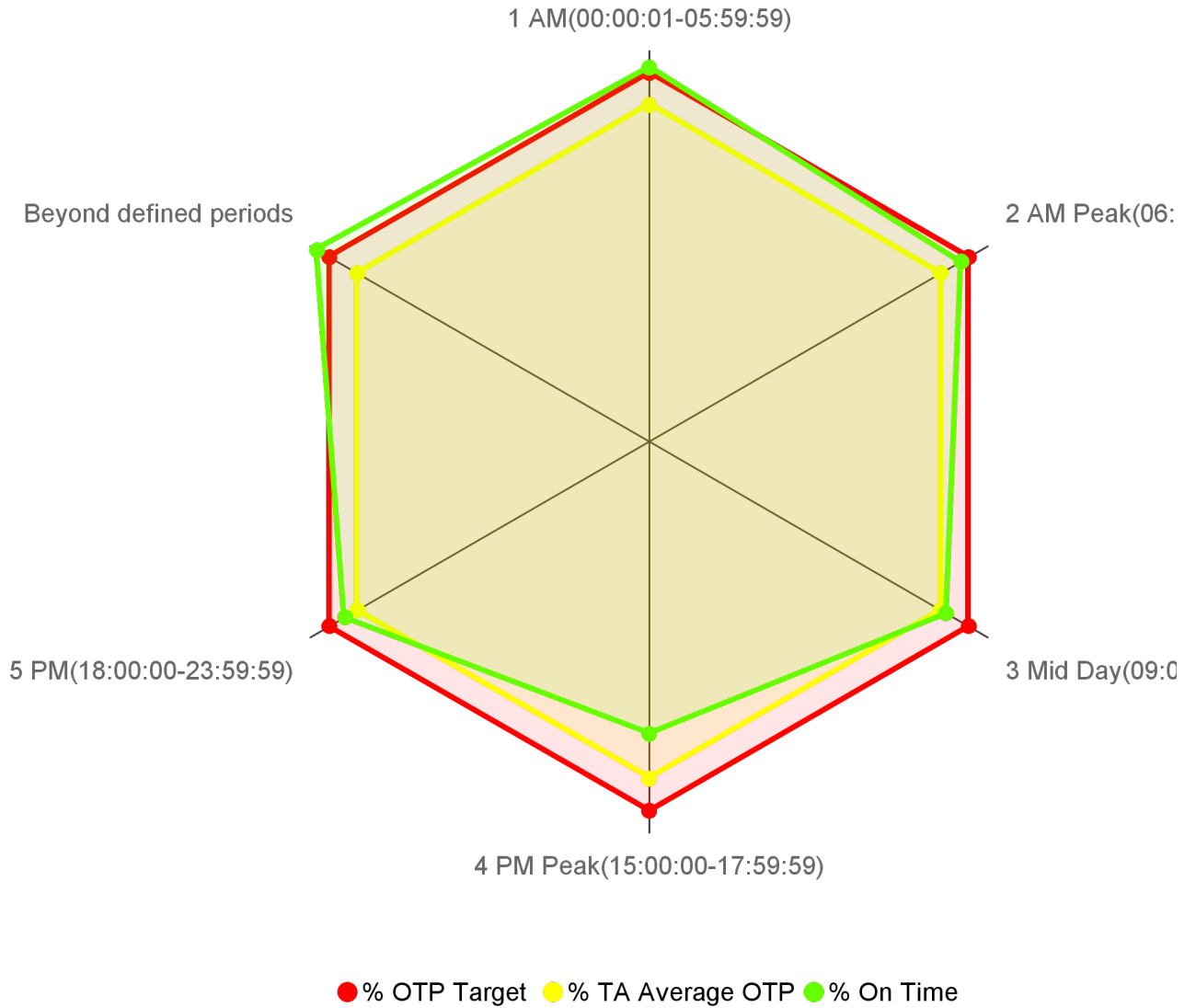
### CR-0105 On Time Performance KPI Trend

On Time Performance



### CR-0104 On Time Performance by Operational Period

On Time Performance by Operational Period

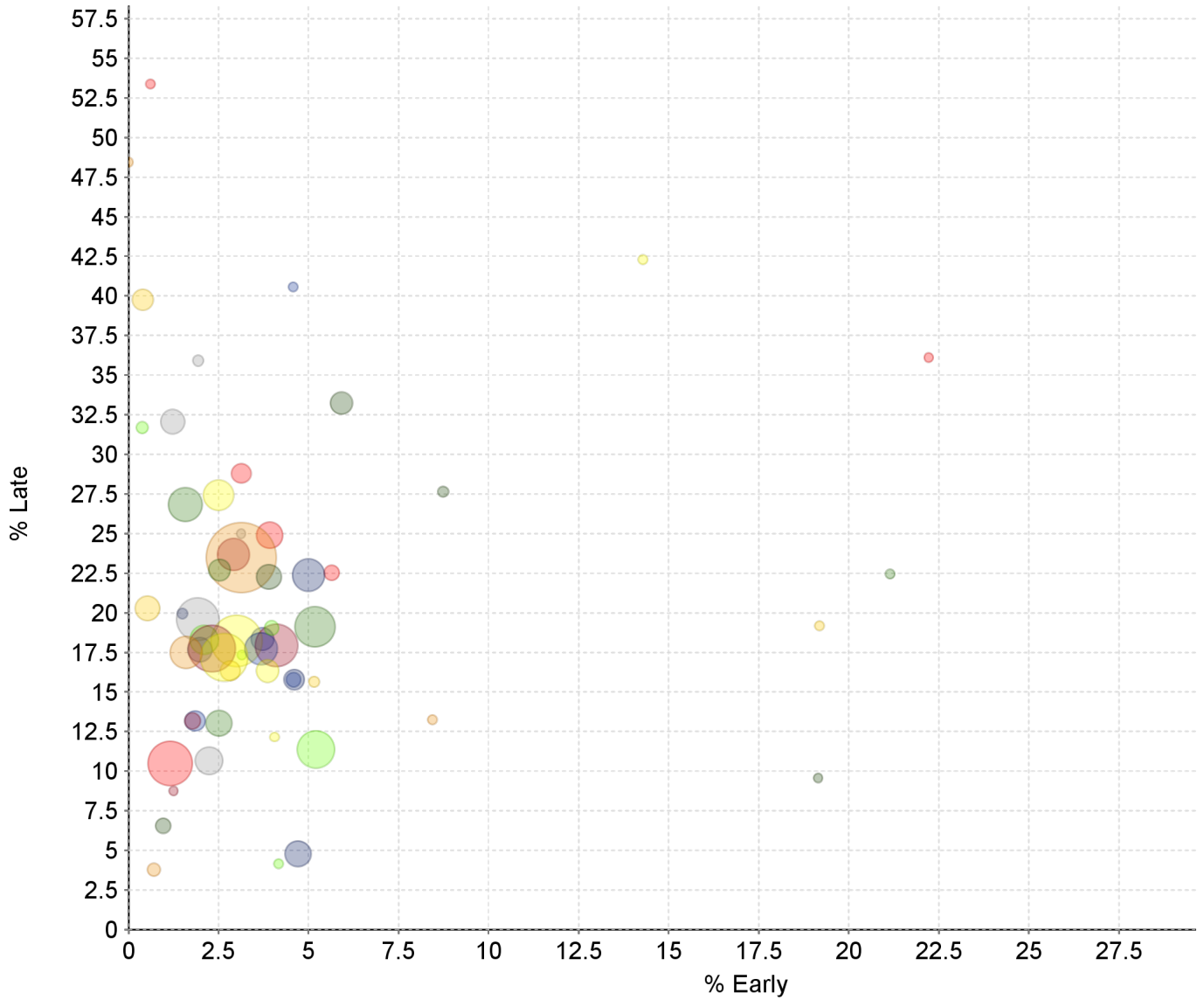


Transit Domain: Bus

Operational Period	% On Time	% TA Average OTP	% OTP Target	# On Time	# Processed
1 AM(00:00:01-05:59:59)	86.21	77.59	85.00	2,413	2,799
2 AM Peak(06:00:00-08:59:59)	83.07	77.59	85.00	34,753	41,835
3 Mid Day(09:00:00-14:59:59)	78.93	77.59	85.00	69,182	87,650
4 PM Peak(15:00:00-17:59:59)	67.24	77.59	85.00	32,711	48,646
5 PM(18:00:00-23:59:59)	80.85	77.59	85.00	31,251	38,654
Beyond defined periods	88.25	77.59	85.00	571	647

### CR-0106 On Time Performance Graph

Shows all Routes together on one chart for easy visual indication of outliers.



Route	% Early	% Late	Timepoints Processed
001 - Greenback	1.16	10.50	9,851
002 - Riverside	3.86	16.33	3,779
003 - Riverside Express	0.38	31.68	786
005 - Meadowview - Valley Hi via Massi	4.58	15.77	1,528
006 - Land Park	2.53	22.69	3,600
007 - Pocket Express	5.15	15.65	524
011 - Truxel Road	1.23	32.06	4,239
013 - Northgate	1.78	13.17	1,966
015 - Rio Linda Blvd - O St	5.00	22.38	6,501
019 - Rio Linda	5.91	33.22	3,672
021 - Sunrise - Citrus Heights	1.60	17.50	6,436
022 - Arden	5.65	22.53	1,789
023 - El Camino	2.66	17.20	10,654
024 - Madison - Greenback	3.97	19.04	1,560
025 - Marconi	3.68	17.74	6,438
026 - Fulton	1.58	26.82	6,919

Route	% Early	% Late	Timepoints Processed
028 - Fair Oaks - Folsom Blvd	2.83	16.33	3,037
029 - Arden - California Ave	1.94	35.92	568
030 - J Street (DASH)	2.31	17.74	10,455
034 - McKinley	4.60	15.78	3,193
038 - P/Q Streets	3.90	22.26	4,411
051 - Broadway - Stockton	3.13	23.49	16,840
054 - Center Parkway	3.13	28.80	2,906
055 - Scottsdale	2.50	27.42	5,890
056 - Pocket - C.R.C.	2.10	18.29	5,477
061 - Fruitridge	1.85	13.18	3,187
062 - Freeport	5.18	19.11	8,651
065 - Delta Shores - Franklin - 65th S	0.40	39.76	3,267
067 - Franklin	1.92	19.60	9,252
068 - 44th Street	4.11	17.94	9,255
072 - Rosemont - Lincoln Village	4.71	4.79	4,715
074 - International	0.96	6.56	1,767
075 - Mather Field	0.70	3.78	1,138
080 - Watt - Elkhorn	3.92	24.89	4,845
081 - Florin - 65th Street	3.00	18.23	11,738
082 - Howe - 65th Street	5.20	11.39	7,858
084 - Watt - North Highlands	3.72	18.34	3,871
086 - San Juan - Silver Eagle	2.51	13.02	4,699
087 - Howe	0.53	20.28	4,320
088 - West El Camino	2.24	10.66	5,188
093 - Hillsdale	2.91	23.67	6,417
103 - Auburn Blvd	1.50	19.95	401
109 - Hazel Express	8.74	27.64	492
205 - Fruitridge Road - Freeport	8.43	13.25	166
206 - 12th Ave - Sutterville Road	22.22	36.11	144
210 - La Riveria Drive	4.05	12.16	74
211 - College Greens	3.15	17.32	127
212 - 14th Ave - 21st Ave	4.57	40.57	175
213 - Fruitridge Road - Stockton Blvd	21.15	22.44	156
214 - Broadway - Stockton Blvd	19.19	19.19	172
226 - Pocket Riverside Blvd	3.13	25.00	64
227 - South Land Park - Greenhaven Dri	1.25	8.75	80
228 - Gloria Drive - Rush River Drive	31.68	0.99	101
246 - Meadowview - Greenhaven	19.15	9.57	94
247 - 21st Street - Florin Road	0.00	48.44	64
248 - Meadowview - Rush River	0.61	53.37	163
252 - Freeport - Fruitridge - ML King	14.29	42.29	175



Route	% Early	% Late	Timepoints Processed
255 - La Riveria - College Greens	4.17	4.17	96
051X - W/X	1.98	17.67	4,300

### CR-0103 Overall On Time

Overall On Time Timepoints

On Time	Early	Late	Timepoints Processed
77.59%	3.05%	19.36%	220,231