



Ridership Report

Current Month & Fiscal YTD Summary

May 2019					
	Average Daily Boardings			Monthly	YTD
	Weekday	Saturday	Sunday		
Days	22	4	5	31	
Bus	36,967	12,122	7,173	899,824	9,207,168
Full-Size Bus	35,192	12,122	7,173	858,571	
Community Bus	1,066			23,458	
SmaRT Ride	377			8,296	
Folsom Service	332			7,295	
Special Service*				2,204	
Light Rail	39,231	15,811	11,364	983,801	9,978,088
Blue Line	20,185	7,682	5,685	503,223	
Gold Line	18,449	8,129	5,679	466,789	
Green Line	597			13,134	
Special Service*				655	
System Total	76,198	27,933	18,537	1,883,625	19,185,256

May 2019				
KPI Comparison - Average Weekday Boardings				
	Actual	KPI Goal	Difference	Percent Difference
Bus Avg Weekday	36,967	33,284	3,683	11.1%
Rail Avg Weekday	39,231	36,608	2,623	7.2%
Monthly Total	1,883,625	1,723,169	160,456	9.3%
Total YTD	19,185,256	18,129,392	1,055,864	5.8%

May 2018					
	Average Daily Boardings			Monthly	YTD
	Weekday	Saturday	Sunday		
Days	22	4	5	31	
Bus	35,226	12,213	7,746	863,516	9,390,095
Full-Size Bus	34,379	12,213	7,746		
Community Bus	847				
Special Service*				960	
Light Rail	37,220	12,500	9,700	918,386	9,859,043
Blue Line	19,500	6,500	4,800		
Gold Line	17,300	6,000	4,900		
Green Line	420				
Golden 1 Service				1,046	
System Total	72,446	24,713	17,446	1,781,902	19,249,138

% Change FY 2019/2018					
	Average Daily Boardings			Monthly	YTD
	Weekday	Saturday	Sunday		
Total Bus	4.9%	-0.7%	-7.4%	4.2%	-1.9%
Light Rail	5.4%	26.5%	17.2%	7.1%	1.2%
System Total	5.2%	13.0%	6.2%	5.7%	-0.3%

Route Level Ridership Comparison (Fixed Route Bus)

Weekday Route Comparison

Route	May 2019	May 2018	Difference	% Change
1	1,715	1,758	(43)	-2%
2	419	436	(17)	-4%
3	200	193	7	4%
5	238	191	47	24%
6	325	346	(20)	-6%
7	138	111	28	25%
11	629	635	(5)	-1%
13	256	306	(50)	-16%
15	1,094	1,155	(61)	-5%
19	618	632	(14)	-2%
21	1,023	1,071	(48)	-4%
22	269	267	1	0%
23	1,645	1,649	(4)	0%
24	145	151	(6)	-4%
25	1,014	979	35	4%
26	1,074	1,011	62	6%
28	321	330	(9)	-3%
29	108	120	(11)	-10%
30	2,030	1,759	271	15%
33	269	211	58	27%
34	257	259	(2)	-1%
38	399	394	5	1%
47	124	134	(10)	-7%
51	3,098	3,354	(256)	-8%
54	277	276	1	0%
55	704	680	24	4%
56	1,016	1,030	(14)	-1%
61	518	533	(15)	-3%
62	993	1,001	(8)	-1%
65	402	414	(11)	-3%
67	1,114	1,197	(83)	-7%
68	1,147	1,225	(78)	-6%
72	1,069	1,007	62	6%
74	167	203	(36)	-18%
75	154	198	(44)	-22%
80	929	909	20	2%
81	2,667	2,588	79	3%
82	1,519	1,568	(49)	-3%
84	764	726	39	5%
85	-	23		
86	1,073	1,081	(8)	-1%
87	1,085	1,103	(18)	-2%
88	770	748	21	3%
93	814	823	(8)	-1%
95	77	52	24	47%
103	66	74	(8)	-10%
109	106	100	5	5%
170	216	63	153	243%
171	78	68	9	14%
172	156	122	34	28%
175	34	26	8	30%
176	40	30	10	34%
177	140	91	48	53%
205	34	33	1	2%
206	39	36	3	8%
210	41	55	(14)	-26%
211	100	97	3	3%
212	83	50	32	64%
214	35	18	16	90%
227	21	18	3	19%
228	46	17	28	163%
246	52	36	16	44%
248	42	21	21	100%
252	35	40	(5)	-13%
255	53	48	5	9%

Saturday Route Comparison

Route	May 2019	May 2018	Difference	% Change
1	736	791	(56)	-7%
11	247	273	(25)	-9%
15	461	522	(61)	-12%
19	259	269	(10)	-4%
21	471	533	(62)	-12%
23	1,094	1,140	(47)	-4%
25	358	348	10	3%
26	282	298	(16)	-5%
30	458	471	(13)	-3%
38	162	160	2	1%
51	1,451	1,504	(54)	-4%
54	86	97	(11)	-11%
55	208	212	(4)	-2%
56	475	473	2	0%
62	275	301	(26)	-9%
67	275	301	(26)	-9%
68	521	571	(50)	-9%
72	223	242	(19)	-8%
75	105	147	(42)	-29%
80	599	581	18	3%
81	1,091	1,131	(40)	-4%
82	455	492	(37)	-8%
84	314	314	0	0%
86	385	339	46	13%
87	378	319	59	19%
88	252	233	18	8%
93	260	264	(4)	-1%

Sunday Route Comparison

Route	May 2019	May 2018	Difference	% Change
1	511	604	(93)	-15%
15	345	425	(80)	-19%
19	204	202	1	1%
21	296	353	(57)	-16%
23	671	727	(57)	-8%
26	171	188	(16)	-9%
30	226	279	(53)	-19%
38	119	117	2	2%
51	946	1,060	(114)	-11%
55	132	150	(18)	-12%
56	274	281	(7)	-2%
67	388	463	(75)	-16%
68	381	508	(127)	-25%
72	148	161	(13)	-8%
75	78	103	(25)	-24%
80	469	448	21	5%
81	580	624	(45)	-7%
82	356	386	(30)	-8%
86	255	226	29	13%
87	227	208	19	9%
88	206	191	15	8%
93	190	209	(18)	-9%

Please note:

Route totals do not add up to monthly totals. Route by Route comparisons are only shown for routes that operated in each year. Additionally special service routes are not included on this page.

Average Weekday Boardings by Station by Line

Station Name	May19	May18	Difference	% Change
BLUE LINE - Total	20,185	19,500	685	3.51%
12TH & I STATION	526	491	36	7.25%
13TH STREET STATION	533	542	(8)	-1.55%
16TH STREET STATION	1,720	1,683	37	2.18%
47TH AVENUE STATION	608	578	30	5.14%
4TH AVE/WAYNE HULTGREN STATION	709	574	136	23.62%
7TH & CAPITOL STATION	778	756	21	2.80%
8TH & CAPITOL STATION	453	408	46	11.20%
8TH & O STATION	797	800	(3)	-0.43%
ALKALI FLAT/LA VALENTINA STA	732	721	11	1.51%
ARCHIVES PLAZA STATION	512	536	(24)	-4.47%
ARDEN/DEL PASO STATION	880	823	57	6.96%
BROADWAY STATION	723	685	38	5.55%
CATHEDRAL SQUARE STATION	912	815	97	11.96%
CENTER PARKWAY STATION	323	276	46	16.79%
CITY COLLEGE STATION	767	956	(189)	-19.73%
CRC STATION	1,337	1,370	(34)	-2.47%
FLORIN STATION	1,023	936	87	9.33%
FRANKLIN STATION	807	734	72	9.80%
FRUITRIDGE STATION	477	471	6	1.17%
GLOBE AVENUE STATION	270	272	(2)	-0.82%
MARCONI/ARCADE STATION	791	732	59	8.00%
MEADOWVIEW STATION	981	928	53	5.69%
ROSEVILLE ROAD STATION	664	667	(3)	-0.51%
ROYAL OAKS STATION	471	413	58	14.06%
ST ROSE OF LIMA PARK STATION	674	626	47	7.58%
SWANSTON STATION	254	259	(5)	-1.74%
Watt/I-80 Station	1,237	1,227	10	0.80%
WATT/I-80 WEST STATION	149	143	6	4.33%
GOLD LINE - Total	18,449	17,300	1,149	6.64%
13TH STREET STATION	675	635	40	6.32%
16TH STREET STATION	1,768	1,648	120	7.29%
23RD STREET STATION	514	491	23	4.65%
29TH STREET STATION	1,465	1,388	77	5.55%
39TH STREET STATION	279	268	11	4.10%
48TH STREET STATION	241	224	17	7.78%
59TH STREET STATION	268	250	18	7.27%
7TH & CAPITOL STATION	980	912	67	7.40%
7TH & I/COUNTY CENTER STATION	360	347	13	3.68%
8TH & CAPITOL STATION	58	54	3	6.07%
8TH & H STATION	84	75	9	11.76%
8TH & K STATION	82	78	4	4.53%
8TH & O STATION	776	733	43	5.88%
ARCHIVES PLAZA STATION	620	593	27	4.59%
BUTTERFIELD STATION	577	519	58	11.18%
COLLEGE GREENS STATION	701	619	82	13.22%
CORDOVA TOWN CENTER STATION	475	453	21	4.72%
GLENN STATION	268	248	20	7.86%
HAZEL STATION	170	162	8	4.62%

HISTORIC FOLSOM STATION	513	474	38	8.10%
IRON POINT STATION	462	437	25	5.73%
MATHER FIELD/MILLS STATION	1,412	1,287	125	9.73%
POWER INN STATION	533	505	28	5.54%
SACRAMENTO VALLEY STATION	514	492	23	4.59%
STARFIRE STATION	309	289	19	6.74%
SUNRISE STATION	862	790	71	9.03%
TIBER STATION	300	278	22	7.91%
UNIVERSITY/65TH STREET STATION	1,352	1,336	16	1.21%
WATT/MANLOVE STATION	1,050	965	85	8.81%
ZINFANDEL STATION	763	737	26	3.52%
GREEN LINE - Total	597	420	177	42.14%
13TH STREET STATION	129	97	31	32.34%
7TH & CAPITOL STATION	47	27	20	74.79%
7TH & I/COUNTY CENTER STATION	43	26	17	66.97%
8TH & CAPITOL STATION	26	19	7	35.93%
8TH & K STATION	47	51	(4)	-7.86%
8TH & O STATION	36	23	13	53.30%
ARCHIVES PLAZA STATION	42	26	16	59.22%
TOWNSHIP 9 STATION	227	150	77	51.52%
All Stations	39,231	37,220	2,011	5.40%

Average Weekday Alightings by Station by Line

Station Name	May19	May18	Difference	% Change
BLUE LINE - Rt#533	18,820	18,299	521	2.85%
12TH & I STATION	492	489	3	0.60%
13TH STREET STATION	531	533	(2)	-0.44%
16TH STREET STATION	1,670	1,630	41	2.49%
47TH AVENUE STATION	598	560	37	6.65%
4TH AVE/WAYNE HULTGREN STATION	518	440	78	17.66%
7TH & CAPITOL STATION	609	629	(20)	-3.17%
8TH & CAPITOL STATION	508	482	26	5.45%
8TH & O STATION	689	691	(2)	-0.26%
ALKALI FLAT/LA VALENTINA STATION	686	679	7	1.04%
ARCHIVES PLAZA STATION	463	467	(4)	-0.91%
ARDEN/DEL PASO STATION	858	813	45	5.52%
BROADWAY STATION	684	669	16	2.38%
CATHEDRAL SQUARE STATION	815	807	7	0.92%
CENTER PARKWAY STATION	255	210	44	21.12%
CITY COLLEGE STATION	706	827	(122)	-14.74%
CRC STATION	1,357	1,359	(2)	-0.18%
FLORIN STATION	957	889	68	7.64%
FRANKLIN STATION	680	666	15	2.23%
FRUITRIDGE STATION	495	441	54	12.30%
GLOBE AVENUE STATION	282	267	14	5.40%
MARCONI/ARCADE STATION	707	665	42	6.35%
MEADOWVIEW STATION	969	868	100	11.54%
ROSEVILLE ROAD STATION	631	642	(11)	-1.74%
ROYAL OAKS STATION	446	393	53	13.37%
ST ROSE OF LIMA PARK STATION	509	500	9	1.80%
SWANSTON STATION	247	251	(3)	-1.38%
Watt/I-80 Station	1,258	1,221	37	3.04%
WATT/I-80 WEST STATION	134	137	(3)	-2.25%
GOLD LINE - Rt#507	19,834	18,370	1,464	7.97%
13TH STREET STATION	579	558	21	3.74%
16TH STREET STATION	1,900	1,766	134	7.56%
23RD STREET STATION	532	510	21	4.19%
29TH STREET STATION	1,542	1,446	95	6.60%
39TH STREET STATION	296	278	18	6.51%
48TH STREET STATION	297	257	40	15.63%
59TH STREET STATION	313	282	31	10.86%
7TH & CAPITOL STATION	59	61	(2)	-3.33%
7TH & I/COUNTY CENTER STATION	28	27	1	3.39%
8TH & CAPITOL STATION	792	706	86	12.21%
8TH & H STATION	400	357	42	11.88%
8TH & K STATION	748	698	51	7.26%
8TH & O STATION	737	680	57	8.38%
ARCHIVES PLAZA STATION	689	641	48	7.47%
BUTTERFIELD STATION	591	535	56	10.56%
COLLEGE GREENS STATION	732	632	99	15.73%
CORDOVA TOWN CENTER STATION	486	450	36	8.06%
GLENN STATION	268	251	17	6.72%

HAZEL STATION	183	166	17	9.99%
HISTORIC FOLSOM STATION	536	498	37	7.50%
IRON POINT STATION	498	448	49	11.02%
MATHER FIELD/MILLS STATION	1,393	1,305	88	6.75%
POWER INN STATION	555	528	27	5.17%
SACRAMENTO VALLEY STATION	491	450	40	8.95%
SACRAMENTO VALLEY STATION	271	247	24	9.75%
STARFIRE STATION	289	272	18	6.52%
SUNRISE STATION	890	811	79	9.78%
TIBER STATION	318	283	35	12.36%
UNIVERSITY/65TH STREET STATION	1,494	1,416	78	5.48%
WATT/MANLOVE STATION	1,096	1,014	82	8.14%
ZINFANDEL STATION	831	793	38	4.74%
GREEN LINE - Rt#519	578	552	26	4.65%
13TH STREET STATION	198	178	20	11.18%
7TH & CAPITOL STATION	54	44	10	21.85%
7TH & I/COUNTY CENTER STATIO	69	61	7	12.04%
8TH & CAPITOL STATION	15	11	4	35.25%
8TH & K STATION	20	33	(13)	-39.06%
8TH & O STATION	29	27	2	7.36%
ARCHIVES PLAZA STATION	27	28	(1)	-4.68%
TOWNSHIP 9 STATION	166	169	(3)	-1.82%
All Stations	39,231	37,220	2,011	5.40%

Average Saturday Boardings by Station by Line

Station Name	May18	Difference	% Change
BLUE LINE - Rt#533	6,500	1,182	18.18%
12TH & I STATION	132	20	15.04%
13TH STREET STATION	165	31	18.62%
16TH STREET STATION	593	138	23.32%
47TH AVENUE STATION	162	27	16.84%
4TH AVE/WAYNE HULTGREN STATION	118	14	12.08%
7TH & CAPITOL STATION	281	19	6.67%
8TH & CAPITOL STATION	71	4	5.54%
8TH & O STATION	91	1	0.80%
ALKALI FLAT/LA VALENTINA STATION	320	57	17.90%
ARCHIVES PLAZA STATION	66	11	16.93%
ARDEN/DEL PASO STATION	388	68	17.43%
BROADWAY STATION	303	39	12.99%
CATHEDRAL SQUARE STATION	284	52	18.23%
CENTER PARKWAY STATION	113	9	7.60%
CITY COLLEGE STATION	184	7	3.54%
CRC STATION	440	131	29.78%
FLORIN STATION	357	57	16.00%
FRANKLIN STATION	163	26	16.10%
FRUITRIDGE STATION	183	33	17.96%
GLOBE AVENUE STATION	102	(1)	-0.80%
MARCONI/ARCADE STATION	303	99	32.61%
MEADOWVIEW STATION	336	82	24.36%
ROSEVILLE ROAD STATION	89	17	18.62%
ROYAL OAKS STATION	226	84	37.21%
ST ROSE OF LIMA PARK STATION	303	55	18.00%
SWANSTON STATION	98	(1)	-0.74%
Watt/I-80 Station	568	87	15.23%
WATT/I-80 WEST STATION	19	9	44.84%
GOLD LINE - Rt#507	6,000	2,129	35.48%
13TH STREET STATION	176	55	31.39%
16TH STREET STATION	575	201	34.93%
23RD STREET STATION	144	60	41.43%
29TH STREET STATION	437	119	27.29%
39TH STREET STATION	95	26	27.00%
48TH STREET STATION	80	37	46.48%
59TH STREET STATION	89	42	47.26%
7TH & CAPITOL STATION	286	83	28.82%
7TH & I/COUNTY CENTER STATION	90	27	30.28%
8TH & CAPITOL STATION	24	12	50.65%
8TH & H STATION	24	4	16.06%
8TH & K STATION	48	(1)	-2.08%
8TH & O STATION	96	36	37.85%
ARCHIVES PLAZA STATION	78	(7)	-8.44%
BUTTERFIELD STATION	121	56	46.02%
COLLEGE GREENS STATION	350	157	44.90%
CORDOVA TOWN CENTER STATION	175	74	42.08%
GLENN STATION	49	52	106.06%

HAZEL STATION	58	36	62.34%
HISTORIC FOLSOM STATION	209	63	30.23%
IRON POINT STATION	165	66	39.80%
MATHER FIELD/MILLS STATION	526	204	38.80%
POWER INN STATION	161	54	33.74%
SACRAMENTO VALLEY STATION	246	113	45.74%
ST ROSE OF LIMA PARK STATION	4	(3)	-74.40%
STARFIRE STATION	140	49	35.00%
SUNRISE STATION	283	58	20.61%
TIBER STATION	112	39	35.16%
UNIVERSITY/65TH STREET STATION	428	106	24.68%
WATT/MANLOVE STATION	304	125	41.25%
ZINFANDEL STATION	427	185	43.38%
Final Total - Boardings	12,500	3,311	26.49%

Average Saturday Alightings by Station by Line

Station Name	May18	Difference	% Change
BLUE LINE - Rt#533	6,273	1,288	20.53%
12TH & I STATION	122	(8)	-6.36%
13TH STREET STATION	164	3	1.73%
16TH STREET STATION	618	125	20.19%
47TH AVENUE STATION	158	24	15.08%
4TH AVE/WAYNE HULTGREN STATION	111	28	25.76%
7TH & CAPITOL STATION	200	16	8.22%
8TH & CAPITOL STATION	102	2	1.87%
8TH & O STATION	84	7	7.97%
ALKALI FLAT/LA VALENTINA STATION	308	61	19.98%
ARCHIVES PLAZA STATION	50	(3)	-5.77%
ARDEN/DEL PASO STATION	382	59	15.51%
BROADWAY STATION	315	17	5.51%
CATHEDRAL SQUARE STATION	303	46	15.25%
CENTER PARKWAY STATION	97	47	48.32%
CITY COLLEGE STATION	159	30	18.92%
CRC STATION	446	109	24.34%
FLORIN STATION	358	120	33.55%
FRANKLIN STATION	131	34	26.18%
FRUITRIDGE STATION	164	46	28.23%
GLOBE AVENUE STATION	103	21	20.72%
MARCONI/ARCADE STATION	286	97	33.88%
MEADOWVIEW STATION	322	78	24.20%
ROSEVILLE ROAD STATION	95	(5)	-5.66%
ROYAL OAKS STATION	242	80	32.91%
ST ROSE OF LIMA PARK STATION	228	61	26.85%
SWANSTON STATION	84	22	26.32%
Watt/I-80 Station	588	160	27.28%
WATT/I-80 WEST STATION	15	4	29.77%
GOLD LINE - Rt#507	6,227	2,023	32.49%
13TH STREET STATION	164	29	17.58%
16TH STREET STATION	637	221	34.66%

23RD STREET STATION	151	60	40.01%
29TH STREET STATION	410	145	35.49%
39TH STREET STATION	83	20	24.28%
48TH STREET STATION	87	38	44.20%
59TH STREET STATION	78	35	44.36%
7TH & CAPITOL STATION	24	6	24.02%
7TH & I/COUNTY CENTER STATION	16	3	16.34%
8TH & CAPITOL STATION	147	(3)	-2.10%
8TH & H STATION	69	42	60.74%
8TH & K STATION	329	26	7.82%
8TH & O STATION	82	21	26.08%
ARCHIVES PLAZA STATION	82	11	13.56%
BUTTERFIELD STATION	123	69	55.62%
COLLEGE GREENS STATION	351	108	30.62%
CORDOVA TOWN CENTER STATION	185	49	26.30%
GLENN STATION	42	15	34.84%
HAZEL STATION	57	28	49.42%
HISTORIC FOLSOM STATION	235	169	71.91%
IRON POINT STATION	174	34	19.77%
MATHER FIELD/MILLS STATION	559	173	30.90%
POWER INN STATION	144	80	55.33%
SACRAMENTO VALLEY STATIO	256	89	34.86%
SACRAMENTO VALLEY STATION	3	(3)	-100.00%
ST ROSE OF LIMA PARK STATION	0	(0)	-100.00%
STARFIRE STATION	143	33	22.88%
SUNRISE STATION	304	57	18.92%
TIBER STATION	106	42	39.45%
UNIVERSITY/65TH STREET STATION	439	145	32.95%
WATT/MANLOVE STATION	294	110	37.54%
ZINFANDEL STATION	451	174	38.47%
Final Total - Alightings	12,500	3,311	26.49%

Average Sunday Boardings by Station by Line

Station Name	May19	May18	Difference	% Change
BLUE LINE - Rt#533	5,685	4,800	885	18.44%
12TH & I STATION	141	104	37	35.78%
13TH STREET STATION	154	122	32	26.29%
16TH STREET STATION	577	439	139	31.59%
47TH AVENUE STATION	132	128	3	2.49%
4TH AVE/WAYNE HULTGREN STATION	92	83	9	10.40%
7TH & CAPITOL STATION	239	205	34	16.67%
8TH & CAPITOL STATION	62	53	9	17.28%
8TH & O STATION	94	72	22	30.58%
ALKALI FLAT/LA VALENTINA STATION	270	242	28	11.38%
ARCHIVES PLAZA STATION	47	43	5	11.47%
ARDEN/DEL PASO STATION	317	283	34	12.04%
BROADWAY STATION	259	225	34	15.33%
CATHEDRAL SQUARE STATION	280	226	55	24.28%
CENTER PARKWAY STATION	105	82	23	28.11%
CITY COLLEGE STATION	130	113	16	14.43%
CRC STATION	381	305	76	24.76%
FLORIN STATION	318	282	37	12.98%
FRANKLIN STATION	141	139	3	2.07%
FRUITRIDGE STATION	157	137	20	14.72%
GLOBE AVENUE STATION	100	86	14	15.91%
MARCONI/ARCADE STATION	215	181	34	18.93%
MEADOWVIEW STATION	280	246	34	13.68%
ROSEVILLE ROAD STATION	54	76	(22)	-28.89%
ROYAL OAKS STATION	226	184	43	23.23%
ST ROSE OF LIMA PARK STATION	277	227	50	21.99%
SWANSTON STATION	66	65	0	0.33%
Watt/I-80 Station	510	406	104	25.62%
WATT/I-80 WEST STATION	14	14	(0)	-0.85%
GOLD LINE - Rt#507	5,679	4,900	779	15.90%
13TH STREET STATION	177	155	23	14.54%
16TH STREET STATION	574	458	116	25.29%
23RD STREET STATION	127	111	16	14.50%
29TH STREET STATION	384	343	42	12.14%
39TH STREET STATION	83	77	6	7.53%
48TH STREET STATION	65	61	4	6.69%
59TH STREET STATION	68	65	3	5.35%
7TH & CAPITOL STATION	257	232	25	10.84%
7TH & I/COUNTY CENTER STATION	85	79	6	8.00%
8TH & CAPITOL STATION	34	20	14	70.56%
8TH & H STATION	19	23	(5)	-19.90%
8TH & K STATION	41	37	4	11.60%
8TH & O STATION	105	82	23	27.48%
ARCHIVES PLAZA STATION	89	59	30	51.47%
BUTTERFIELD STATION	127	102	25	24.24%
COLLEGE GREENS STATION	302	287	15	5.15%
CORDOVA TOWN CENTER STATION	176	149	27	18.41%
GLENN STATION	46	34	13	37.13%

HAZEL STATION	50	47	3	6.39%
HISTORIC FOLSOM STATION	185	162	23	13.95%
IRON POINT STATION	143	128	15	11.70%
MATHER FIELD/MILLS STATION	502	436	67	15.35%
POWER INN STATION	150	121	29	23.73%
SACRAMENTO VALLEY STATION	258	220	38	17.05%
STARFIRE STATION	149	121	28	23.49%
SUNRISE STATION	297	244	53	21.79%
TIBER STATION	96	88	8	9.12%
UNIVERSITY/65TH STREET STATION	386	364	22	5.98%
WATT/MANLOVE STATION	301	239	62	25.92%
ZINFANDEL STATION	401	355	46	12.97%
Final Total - Boardings	11,364	9,700	1,664	17.15%

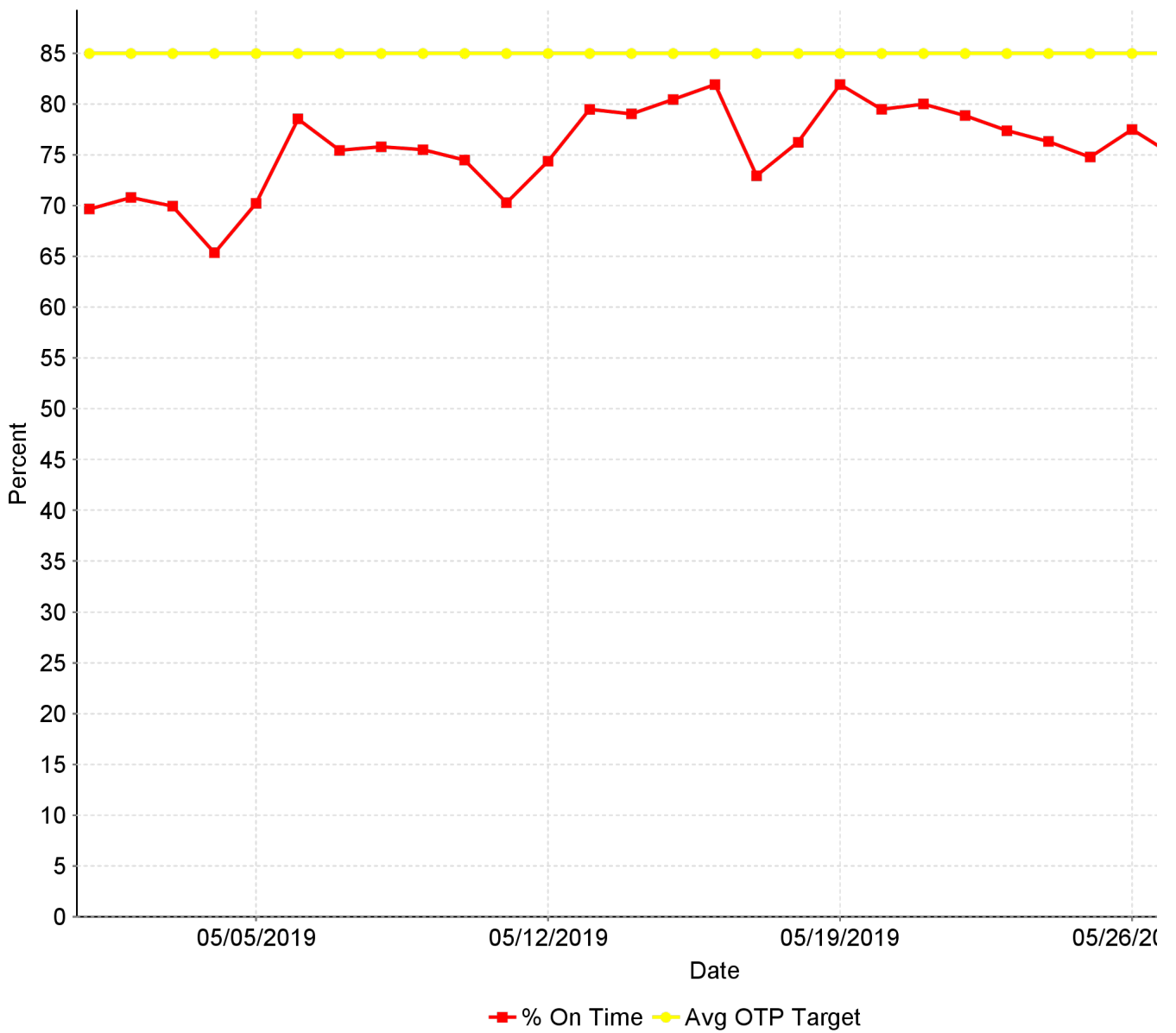
Average Sunday Alightings by Station by Line

Station Name	May19	May18	Difference	% Change
BLUE LINE - Rt#533	5,838	4,860	979	20.14%
12TH & I STATION	91	94	(3)	-3.04%
13TH STREET STATION	175	131	44	33.43%
16TH STREET STATION	584	489	95	19.37%
47TH AVENUE STATION	146	130	16	12.47%
4TH AVE/WAYNE HULTGREN STATION	84	80	4	4.99%
7TH & CAPITOL STATION	179	161	18	11.40%
8TH & CAPITOL STATION	92	83	10	11.74%
8TH & O STATION	90	65	25	37.64%
ALKALI FLAT/LA VALENTINA STATION	321	257	64	24.84%
ARCHIVES PLAZA STATION	44	40	4	11.08%
ARDEN/DEL PASO STATION	352	282	70	24.78%
BROADWAY STATION	286	245	42	17.01%
CATHEDRAL SQUARE STATION	260	227	33	14.66%
CENTER PARKWAY STATION	86	73	13	17.50%
CITY COLLEGE STATION	122	116	6	4.84%
CRC STATION	434	323	112	34.58%
EMPLOYEE PLATFORM STATION	37	29	8	26.14%
FLORIN STATION	350	296	54	18.19%
FRANKLIN STATION	141	117	23	19.88%
FRUITRIDGE STATION	174	137	38	27.51%
GLOBE AVENUE STATION	101	77	23	30.42%
MARCONI/ARCADE STATION	225	184	41	22.23%
MEADOWVIEW STATION	318	246	72	29.03%
ROSEVILLE ROAD STATION	70	74	(4)	-5.53%
ROYAL OAKS STATION	241	202	39	19.48%
ST ROSE OF LIMA PARK STATION	183	171	12	6.79%
SWANSTON STATION	75	69	5	7.60%
Watt/I-80 Station	568	452	116	25.72%
WATT/I-80 WEST STATION	10	9	0	3.90%
GOLD LINE - Rt#507	5,526	4,840	685	14.16%
13TH STREET STATION	139	128	11	8.51%
16TH STREET STATION	537	476	61	12.84%

23RD STREET STATION	124	117	7	6.30%
29TH STREET STATION	364	320	45	14.00%
39TH STREET STATION	107	81	26	31.43%
48TH STREET STATION	82	64	18	28.21%
59TH STREET STATION	71	62	9	14.40%
7TH & CAPITOL STATION	23	22	0	1.13%
7TH & I/COUNTY CENTER STATION	12	12	(0)	-1.85%
8TH & CAPITOL STATION	134	115	19	16.80%
8TH & H STATION	63	51	12	23.84%
8TH & K STATION	287	261	26	9.96%
8TH & O STATION	70	70	0	0.27%
ARCHIVES PLAZA STATION	78	64	14	20.96%
BUTTERFIELD STATION	119	98	22	22.10%
COLLEGE GREENS STATION	302	279	23	8.08%
CORDOVA TOWN CENTER STATION	140	136	3	2.48%
GLENN STATION	27	27	(0)	-0.90%
HAZEL STATION	51	46	6	12.72%
HISTORIC FOLSOM STATION	180	164	16	10.00%
IRON POINT STATION	147	125	22	17.53%
MATHER FIELD/MILLS STATION	486	412	74	18.09%
POWER INN STATION	155	121	34	27.99%
SACRAMENTO VALLEY STATIO	219	201	18	8.75%
SACRAMENTO VALLEY STATION	-	1	(1)	-100.00%
ST ROSE OF LIMA PARK STATION	-	1	(1)	-100.00%
STARFIRE STATION	125	107	18	16.89%
SUNRISE STATION	332	268	64	23.76%
TIBER STATION	84	75	9	11.51%
UNIVERSITY/65TH STREET STATION	376	342	35	10.15%
WATT/MANLOVE STATION	290	232	58	24.89%
ZINFANDEL STATION	400	361	39	10.88%
Final Total - Alightings	11,364	9,700	1,664	17.15%

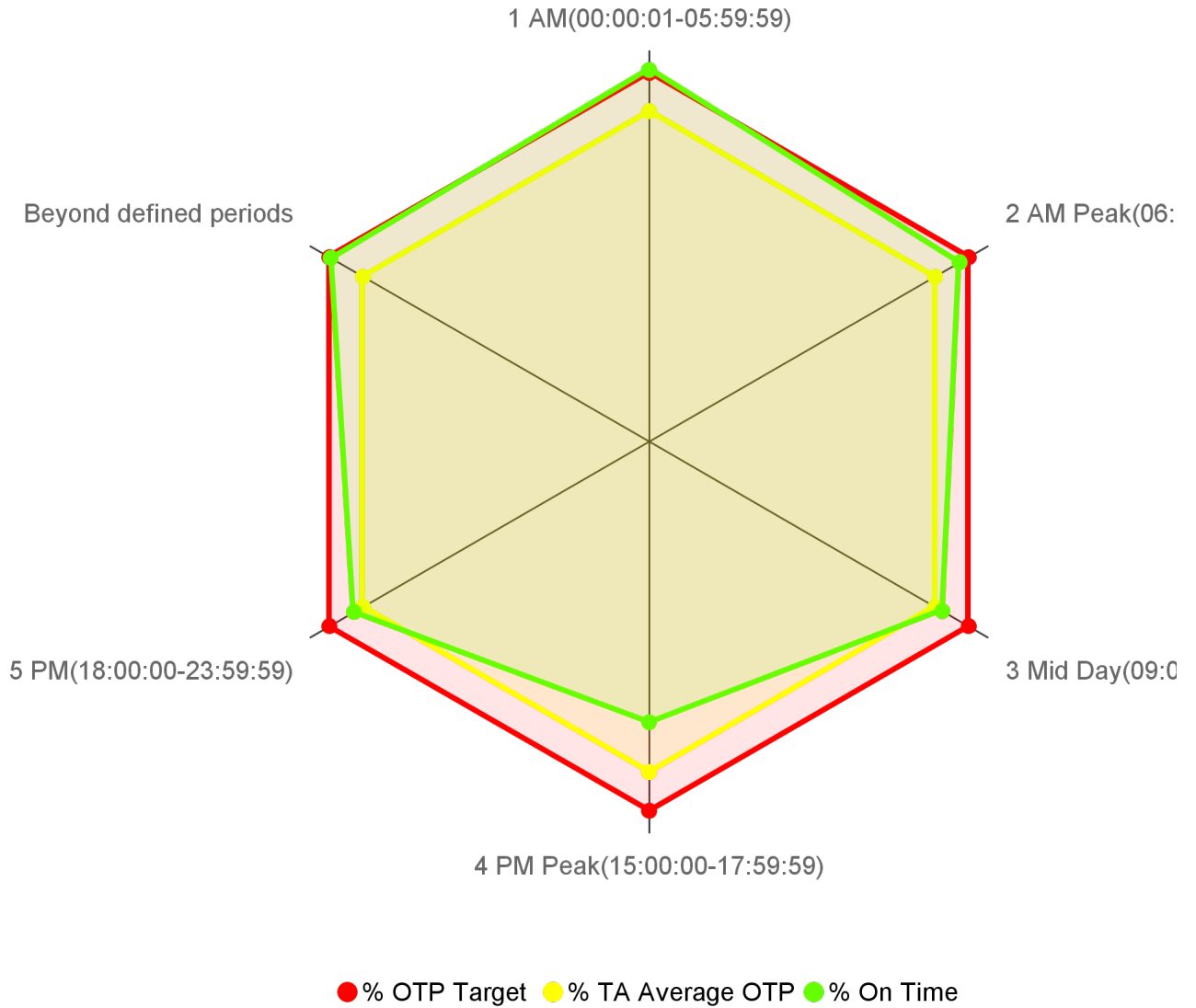
CR-0105 On Time Performance KPI Trend

On Time Performance



CR-0104 On Time Performance by Operational Period

On Time Performance by Operational Period

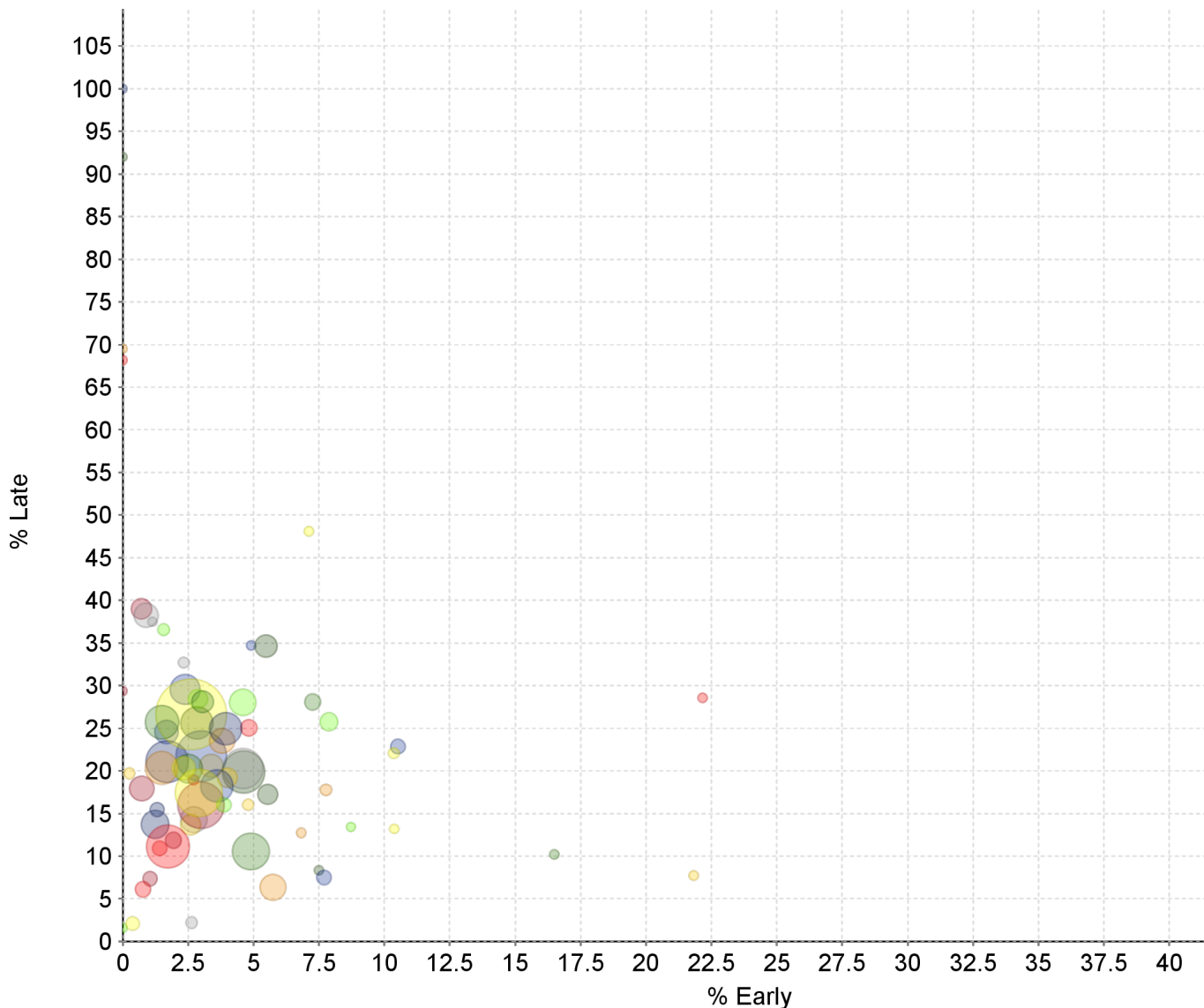


Transit Domain: Bus

Operational Period	% On Time	% TA Average OTP	% OTP Target	# On Time	# Processed
1 AM(00:00:01-05:59:59)	85.66	76.11	85.00	3,320	3,876
2 AM Peak(06:00:00-08:59:59)	82.67	76.11	85.00	50,796	61,446
3 Mid Day(09:00:00-14:59:59)	77.99	76.11	85.00	90,923	116,579
4 PM Peak(15:00:00-17:59:59)	64.62	76.11	85.00	44,212	68,415
5 PM(18:00:00-23:59:59)	78.44	76.11	85.00	40,129	51,157
Beyond defined periods	84.66	76.11	85.00	657	776

CR-0106 On Time Performance Graph

Shows all Routes together on one chart for easy visual indication of outliers.



Route	% Early	% Late	Timepoints Processed
001 - Greenback	1.73	11.12	12,194
002 - Riverside	2.33	20.32	5,113
003 - Riverside Express	1.57	36.54	1,018
005 - Meadowview - Valley Hi via Massi	7.69	7.50	2,028
006 - Land Park	3.05	28.11	4,653
007 - Pocket Express	4.79	16.03	730
011 - Truxel Road	0.89	38.24	5,484
013 - Northgate	1.94	11.86	2,630
015 - Rio Linda Blvd - O St	3.94	24.96	8,397
019 - Rio Linda	5.48	34.64	4,887
021 - Sunrise - Citrus Heights	1.49	20.36	8,533
022 - Arden	4.82	25.04	2,803
023 - El Camino	2.91	17.43	13,796
024 - Madison - Greenback	3.87	16.01	1,992
025 - Marconi	3.60	18.24	8,381
026 - Fulton	1.50	25.70	8,870

Route	% Early	% Late	Timepoints Processed
028 - Fair Oaks - Folsom Blvd	4.00	19.19	3,851
029 - Arden - California Ave	2.34	32.69	728
030 - J Street (DASH)	3.00	15.99	13,443
033 - Dos Rios	1.32	15.48	1,893
034 - McKinley	5.55	17.26	4,003
038 - P/Q Streets	3.80	23.52	5,820
047 - Phoenix Park	1.42	10.93	1,977
051 - Broadway - Stockton	2.61	26.64	22,144
054 - Center Parkway	2.88	28.43	3,686
055 - Scottsdale	2.39	29.55	7,662
056 - Pocket - C.R.C.	2.51	20.27	7,099
061 - Fruitridge	2.60	13.69	4,121
062 - Freeport	4.59	20.27	11,211
065 - Delta Shores - Franklin - 65th S	0.72	39.01	4,171
067 - Franklin	1.69	21.08	11,946
068 - 44th Street	4.62	19.88	11,966
072 - Rosemont - Lincoln Village	5.74	6.36	6,134
074 - International	0.77	6.11	2,454
075 - Mather Field	0.38	2.10	1,573
080 - Watt - Elkhorn	4.59	28.04	6,277
081 - Florin - 65th Street	3.01	21.75	14,923
082 - Howe - 65th Street	4.90	10.55	10,061
084 - Watt - North Highlands	3.38	20.60	5,146
086 - San Juan - Silver Eagle	2.72	14.30	6,139
087 - Howe	0.72	17.93	5,672
088 - West El Camino	1.24	13.73	6,854
093 - Hillsdale	2.84	25.63	8,350
095 - Citrus Heights-Antelope Rd	7.77	17.77	940
103 - Auburn Blvd	2.71	18.96	517
109 - Hazel Express	10.37	22.10	656
170 - JIBE EASTSIDE	7.88	25.76	3,210
171 - JIBE WESTSIDE	10.52	22.85	2,092
172 - JIBE CENTRAL	7.26	28.08	2,589
175 - RANCHO CORDOVAN - SUNRIDGE PARK	0.26	19.72	781
176 - RANCHO CORDOVAN - ANATOLIA	2.64	2.20	910
177 - RANCHO CORDOVAN - VILLAGES	1.05	7.36	1,998
190 - Franklin SmarT Ride	0.00	100.00	1
195 - Citrus Heights Dial A Ride	0.00	92.00	25
205 - Fruitridge Road - Freeport	6.82	12.73	220
206 - 12th Ave - Sutterville Road	22.17	28.57	203
210 - La Riveria Drive	10.38	13.21	106

Route	% Early	% Late	Timepoints Processed
211 - College Greens	8.72	13.42	149
212 - 14th Ave - 21st Ave	4.91	34.72	265
213 - Fruitridge Road - Stockton Blvd	16.50	10.19	206
214 - Broadway - Stockton Blvd	21.82	7.73	220
226 - Pocket Riverside Blvd	1.14	37.50	88
227 - South Land Park - Greenhaven Dri	0.00	29.36	109
228 - Gloria Drive - Rush River Drive	44.27	0.76	131
246 - Meadowview - Greenhaven	7.50	8.33	120
247 - 21st Street - Florin Road	0.00	69.51	82
248 - Meadowview - Rush River	0.00	68.18	198
252 - Freeport - Fruitridge - ML King	7.11	48.12	239
255 - La Riveria - College Greens	0.00	1.57	127
051X - W/X	1.67	24.57	5,254

CR-0103 Overall On Time

Overall On Time Timepoints

On Time	Early	Late	Timepoints Processed
76.11%	3.18%	20.71%	302,249