



# Ridership Report

## Current Month & Fiscal YTD Summary

July 2019					
	Average Daily Boardings			Monthly	YTD
	Weekday	Saturday	Sunday		
Days	22	4	5	31	
<b>Bus</b>	29,555	11,545	7,232	735,821	735,821
Full-Size Bus	27,889	11,545	7,232	695,888	
Community Bus	991			21,799	
SmaRT Ride	395			8,679	
Folsom Service	281			6,173	
Special Service*				3,282	
<b>Light Rail</b>	36,257	14,935	10,793	913,123	913,123
Blue Line	17,695	7,462	5,432	446,298	
Gold Line	18,023	7,473	5,361	453,203	
Green Line	539			11,858	
Special Service*				1,764	
<b>System Total</b>	65,812	26,480	18,025	1,648,944	1,648,944

July 2019				
KPI Comparison - Average Weekday Boardings				
	Actual	KPI Goal	Difference	Percent Difference
Bus Avg Weekday	29,555	30,922	(1,368)	-4.4%
Rail Avg Weekday	36,257	33,370	2,887	8.7%
Monthly Total	1,648,944	1,599,143	49,801	3.1%
Total YTD	1,648,944	1,599,143	49,801	3.1%

July 2018					
	Average Daily Boardings			Monthly	YTD
	Weekday	Saturday	Sunday		
Days	21	4	6	31	
<b>Bus</b>	29,429	11,529	7,482	715,131	715,131
Full-Size Bus	28,445	11,529	7,482		
Community Bus	984				
SmaRT Ride				4,883	
Folsom Service				0	
Special Service*				1,231	
<b>Light Rail</b>	32,240	11,400	8,200	772,384	772,384
Blue Line	16,000	6,100	4,200		
Gold Line	15,800	5,300	4,000		
Green Line	440				
Golden 1 Service				544	
<b>System Total</b>	61,669	22,929	15,682	1,487,515	1,487,515

% Change FY 2019/2018					
	Average Daily Boardings			Monthly	YTD
	Weekday	Saturday	Sunday		
Total Bus	0.4%	0.1%	-3.3%	2.9%	2.9%
Light Rail	12.5%	31.0%	31.6%	18.2%	18.2%
System Total	6.7%	15.5%	14.9%	10.9%	10.9%

## Route Level Ridership Comparison (Fixed Route Bus)

### Weekday Route Comparison

Route	Jul 2019	Jul 2018	Difference	% Change
1	1,275	1,397	(122)	-9%
2	279	293	(14)	-5%
3	194	184	10	5%
5	99	106	(7)	-6%
6	260	307	(47)	-15%
7	120	114	6	5%
11	534	540	(6)	-1%
13	239	286	(47)	-16%
15	967	980	(13)	-1%
19	491	527	(36)	-7%
21	861	901	(40)	-4%
22	246	254	(8)	-3%
23	1,448	1,430	18	1%
24	136	141	(5)	-3%
25	931	857	74	9%
26	907	909	(2)	0%
28	272	277	(5)	-2%
29	107	116	(9)	-8%
30	1,470	1,486	(16)	-1%
33	222	256	(34)	-13%
34	225	203	22	11%
38	369	357	12	3%
47	100	119	(19)	-16%
51	2,602	2,703	(101)	-4%
54	166	177	(11)	-6%
55	530	538	(8)	-1%
56	830	909	(79)	-9%
61	384	430	(46)	-11%
62	755	816	(61)	-8%
65	315	329	(14)	-4%
67	1,079	1,081	(2)	0%
68	1,021	1,085	(64)	-6%
72	624	689	(65)	-9%
74	165	167	(2)	-1%
75	146	194	(48)	-25%
80	803	770	33	4%
81	1,783	1,881	(98)	-5%
82	1,178	1,198	(20)	-2%
84	631	609	22	4%
85	-	18		
86	944	941	3	0%
87	877	773	104	14%
88	715	663	52	8%
93	698	671	27	4%
95	44	47	(3)	-5%
103	64	58	6	10%
109	106	98	8	8%
170	249	142	107	75%
171	68	94	(26)	-28%
172	157	140	17	12%
175	35	26	9	33%
176	31	31	(0)	0%
177	126	90	36	40%
205	-	-	-	#DIV/0!
206	-	-	-	#DIV/0!
210	-	-	-	#DIV/0!
211	-	-	-	#DIV/0!
212	-	-	-	#DIV/0!
214	-	-	-	#DIV/0!
227	-	-	-	#DIV/0!
228	-	-	-	#DIV/0!
246	-	-	-	#DIV/0!
248	-	-	-	#DIV/0!
252	-	-	-	#DIV/0!
255	-	-	-	#DIV/0!

### Saturday Route Comparison

Route	Jul 2019	Jul 2018	Difference	% Change
1	632	671	(39)	-6%
11	233	230	3	1%
15	458	444	15	3%
19	251	222	29	13%
21	444	443	1	0%
23	1,052	1,004	48	5%
25	333	326	8	2%
26	267	255	12	5%
30	468	470	(2)	0%
38	158	149	9	6%
51	1,368	1,344	24	2%
54	83	101	(18)	-18%
55	177	196	(19)	-10%
56	479	438	41	9%
62	239	276	(37)	-13%
67	239	276	(37)	-13%
68	564	570	(6)	-1%
72	223	190	33	17%
75	88	126	(38)	-30%
80	547	537	10	2%
81	993	1,015	(22)	-2%
82	417	387	30	8%
84	315	304	11	4%
86	357	308	49	16%
87	313	300	14	5%
88	229	233	(4)	-2%
93	269	226	43	19%

### Sunday Route Comparison

Route	Jul 2019	Jul 2018	Difference	% Change
1	462	519	(57)	-11%
15	366	379	(13)	-3%
19	187	198	(11)	-6%
21	303	331	(28)	-8%
23	683	656	27	4%
26	170	176	(6)	-4%
30	236	246	(10)	-4%
38	118	125	(7)	-6%
51	987	980	7	1%
55	121	137	(16)	-12%
56	260	268	(8)	-3%
67	435	412	23	6%
68	462	480	(18)	-4%
72	156	143	13	9%
75	82	100	(18)	-18%
80	465	437	28	6%
81	569	597	(28)	-5%
82	313	347	(34)	-10%
86	254	218	36	16%
87	216	177	39	22%
88	187	169	18	10%
93	201	205	(4)	-2%

Please note:

Route totals do not add up to monthly totals. Route by Route comparisons are only shown for routes that operated in each year. Additionally special service routes are not included on this page.

## Average Weekday Boardings by Station by Line

Station Name	Jul19	Jul18	Jul19	Difference	% Change
<b>BLUE LINE - Total</b>	<b>17,695</b>	<b>16,000</b>	<b>17,695</b>	<b>1,695</b>	<b>10.59%</b>
12TH & I STATION	510	403	510	107	26.55%
13TH STREET STATION	533	445	533	88	19.85%
16TH STREET STATION	1,547	1,381	1,547	166	12.04%
47TH AVENUE STATION	512	474	512	37	7.81%
4TH AVE/WAYNE HULTGREN STATION	277	471	277	(194)	-41.16%
7TH & CAPITOL STATION	716	621	716	95	15.36%
8TH & CAPITOL STATION	417	335	417	82	24.60%
8TH & O STATION	816	657	816	159	24.23%
ALKALI FLAT/LA VALENTINA STA	683	591	683	91	15.45%
ARCHIVES PLAZA STATION	536	440	536	96	21.72%
ARDEN/DEL PASO STATION	789	675	789	114	16.81%
BROADWAY STATION	599	562	599	36	6.48%
CATHEDRAL SQUARE STATION	825	668	825	157	23.43%
CENTER PARKWAY STATION	206	227	206	(21)	-9.25%
CITY COLLEGE STATION	604	784	604	(181)	-23.04%
CRC STATION	1,198	1,124	1,198	73	6.52%
FLORIN STATION	802	768	802	34	4.47%
FRANKLIN STATION	716	603	716	113	18.74%
FRUITRIDGE STATION	376	387	376	(10)	-2.66%
GLOBE AVENUE STATION	244	223	244	21	9.31%
MARCONI/ARCADE STATION	675	601	675	74	12.31%
MEADOWVIEW STATION	834	761	834	73	9.55%
ROSEVILLE ROAD STATION	651	547	651	104	18.92%
ROYAL OAKS STATION	428	339	428	89	26.28%
ST ROSE OF LIMA PARK STATION	618	514	618	104	20.20%
SWANSTON STATION	230	212	230	18	8.27%
Watt/I-80 Station	1,147	1,007	1,147	141	13.96%
WATT/I-80 WEST STATION	135	117	135	18	15.16%
<b>GOLD LINE - Total</b>	<b>18,023</b>	<b>15,800</b>	<b>18,023</b>	<b>2,223</b>	<b>14.07%</b>
13TH STREET STATION	682	580	682	102	17.55%
16TH STREET STATION	1,685	1,505	1,685	180	11.98%
23RD STREET STATION	502	448	502	53	11.88%
29TH STREET STATION	1,514	1,268	1,514	246	19.43%
39TH STREET STATION	282	245	282	38	15.33%
48TH STREET STATION	249	205	249	45	21.76%
59TH STREET STATION	242	228	242	14	6.10%
7TH & CAPITOL STATION	1,013	833	1,013	180	21.61%
7TH & I/COUNTY CENTER STATION	392	317	392	75	23.76%
8TH & CAPITOL STATION	57	50	57	7	14.17%
8TH & H STATION	83	69	83	14	20.96%
8TH & K STATION	88	71	88	17	23.95%
8TH & O STATION	793	669	793	124	18.50%
ARCHIVES PLAZA STATION	625	542	625	83	15.39%
BUTTERFIELD STATION	528	474	528	54	11.43%
COLLEGE GREENS STATION	639	565	639	73	12.95%
CORDOVA TOWN CENTER STATION	472	414	472	58	14.10%
GLENN STATION	248	227	248	21	9.46%
HAZEL STATION	179	148	179	31	20.94%

HISTORIC FOLSOM STATION	483	433	483	50	11.49%
IRON POINT STATION	457	399	457	58	14.42%
MATHER FIELD/MILLS STATION	1,343	1,175	1,343	168	14.28%
POWER INN STATION	547	461	547	87	18.81%
SACRAMENTO VALLEY STATION	495	449	495	46	10.17%
STARFIRE STATION	291	264	291	27	10.10%
SUNRISE STATION	829	722	829	107	14.78%
TIBER STATION	299	254	299	46	18.05%
UNIVERSITY/65TH STREET STATION	1,256	1,220	1,256	36	2.98%
WATT/MANLOVE STATION	959	881	959	77	8.78%
ZINFANDEL STATION	785	673	785	112	16.70%
<b>GREEN LINE - Total</b>	<b>539</b>	<b>440</b>	<b>539</b>	<b>99</b>	<b>22.50%</b>
13TH STREET STATION	126	102	126	24	23.98%
7TH & CAPITOL STATION	41	28	41	13	46.41%
7TH & I/COUNTY CENTER STATION	33	27	33	6	23.25%
8TH & CAPITOL STATION	21	20	21	1	4.47%
8TH & K STATION	50	54	50	(4)	-7.46%
8TH & O STATION	34	25	34	10	39.71%
ARCHIVES PLAZA STATION	35	28	35	7	25.73%
TOWNSHIP 9 STATION	198	157	198	41	26.42%
<b>All Stations</b>	<b>36,257</b>	<b>32,240</b>	<b>36,257</b>	<b>4,017</b>	<b>12.46%</b>

## Average Weekday Alightings by Station by Line

Station Name	Jul19	Jul18	Jul19	Difference	% Change
<b>BLUE LINE - Rt#533</b>	<b>16,887</b>	<b>15,850</b>	<b>16,887</b>	<b>1,037</b>	<b>6.54%</b>
12TH & I STATION	490	424	490	67	15.72%
13TH STREET STATION	543	462	543	81	17.64%
16TH STREET STATION	1,502	1,411	1,502	90	6.38%
47TH AVENUE STATION	499	485	499	13	2.75%
4TH AVE/WAYNE HULTGREN STATION	264	381	264	(117)	-30.77%
7TH & CAPITOL STATION	604	545	604	59	10.78%
8TH & CAPITOL STATION	452	417	452	35	8.31%
8TH & O STATION	666	599	666	67	11.26%
ALKALI FLAT/LA VALENTINA STATION	646	588	646	58	9.93%
ARCHIVES PLAZA STATION	463	405	463	58	14.38%
ARDEN/DEL PASO STATION	781	704	781	77	10.92%
BROADWAY STATION	592	579	592	13	2.26%
CATHEDRAL SQUARE STATION	774	699	774	75	10.70%
CENTER PARKWAY STATION	159	182	159	(23)	-12.89%
CITY COLLEGE STATION	551	717	551	(166)	-23.18%
CRC STATION	1,238	1,178	1,238	60	5.11%
FLORIN STATION	781	770	781	11	1.39%
FRANKLIN STATION	668	576	668	91	15.79%
FRUITRIDGE STATION	353	382	353	(29)	-7.69%
GLOBE AVENUE STATION	250	232	250	18	7.98%
MARCONI/ARCADE STATION	646	576	646	70	12.23%
MEADOWVIEW STATION	756	752	756	4	0.49%
ROSEVILLE ROAD STATION	662	556	662	106	19.03%
ROYAL OAKS STATION	410	341	410	70	20.41%
ST ROSE OF LIMA PARK STATION	518	433	518	85	19.66%
SWANSTON STATION	245	217	245	27	12.53%
Watt/I-80 Station	1,163	1,058	1,163	105	9.93%
WATT/I-80 WEST STATION	140	119	140	22	18.26%
<b>GOLD LINE - Rt#507</b>	<b>18,799</b>	<b>15,912</b>	<b>18,799</b>	<b>2,887</b>	<b>18.14%</b>
13TH STREET STATION	578	484	578	94	19.39%
16TH STREET STATION	1,791	1,530	1,791	261	17.04%
23RD STREET STATION	510	442	510	68	15.38%
29TH STREET STATION	1,562	1,253	1,562	309	24.70%
39TH STREET STATION	289	241	289	48	19.90%
48TH STREET STATION	281	222	281	58	26.19%
59TH STREET STATION	269	244	269	25	10.20%
7TH & CAPITOL STATION	64	53	64	11	20.96%
7TH & I/COUNTY CENTER STATION	26	23	26	2	9.95%
8TH & CAPITOL STATION	743	612	743	132	21.52%
8TH & H STATION	377	309	377	68	21.85%
8TH & K STATION	735	604	735	130	21.59%
8TH & O STATION	670	589	670	81	13.82%
ARCHIVES PLAZA STATION	649	556	649	94	16.88%
BUTTERFIELD STATION	539	463	539	75	16.30%
COLLEGE GREENS STATION	617	548	617	70	12.71%
CORDOVA TOWN CENTER STATION	462	390	462	72	18.57%
GLENN STATION	259	217	259	41	18.94%

HAZEL STATION	172	144	172	29	19.85%
HISTORIC FOLSOM STATION	513	432	513	81	18.77%
IRON POINT STATION	470	388	470	82	21.06%
MATHER FIELD/MILLS STATION	1,359	1,130	1,359	229	20.26%
POWER INN STATION	563	457	563	106	23.26%
SACRAMENTO VALLEY STATION	461	390	461	71	18.32%
SACRAMENTO VALLEY STATION	207	214	207	(7)	-3.44%
STARFIRE STATION	269	235	269	34	14.47%
SUNRISE STATION	851	702	851	149	21.24%
TIBER STATION	294	245	294	49	19.99%
UNIVERSITY/65TH STREET STATION	1,324	1,227	1,324	97	7.92%
WATT/MANLOVE STATION	1,039	878	1,039	161	18.31%
ZINFANDEL STATION	855	687	855	168	24.46%
<b>GREEN LINE - Rt#519</b>	<b>572</b>	<b>478</b>	<b>572</b>	<b>94</b>	<b>19.56%</b>
13TH STREET STATION	203	154	203	49	31.74%
7TH & CAPITOL STATION	42	38	42	3	8.47%
7TH & I/COUNTY CENTER STATIO	59	53	59	6	11.44%
8TH & CAPITOL STATION	9	10	9	(1)	-10.64%
8TH & K STATION	18	28	18	(11)	-37.66%
8TH & O STATION	32	23	32	8	36.14%
ARCHIVES PLAZA STATION	28	25	28	3	12.67%
TOWNSHIP 9 STATION	182	146	182	35	24.22%
<b>All Stations</b>	<b>36,257</b>	<b>32,240</b>	<b>36,257</b>	<b>4,017</b>	<b>12.46%</b>

## Average Saturday Boardings by Station by Line

Station Name	Jul19	Jul18	Difference	% Change
<b>BLUE LINE - Rt#533</b>	<b>7,462</b>	<b>6,100</b>	<b>1,362</b>	<b>22.33%</b>
12TH & I STATION	160	124	36	29.28%
13TH STREET STATION	207	155	52	33.59%
16TH STREET STATION	712	557	155	27.90%
47TH AVENUE STATION	220	152	68	44.74%
4TH AVE/WAYNE HULTGREN STATION	132	111	21	19.21%
7TH & CAPITOL STATION	299	264	36	13.62%
8TH & CAPITOL STATION	83	67	16	24.00%
8TH & O STATION	106	86	20	23.79%
ALKALI FLAT/LA VALENTINA STATION	381	300	81	27.00%
ARCHIVES PLAZA STATION	65	61	4	6.34%
ARDEN/DEL PASO STATION	456	364	92	25.26%
BROADWAY STATION	358	284	73	25.83%
CATHEDRAL SQUARE STATION	350	267	83	31.03%
CENTER PARKWAY STATION	115	106	9	8.42%
CITY COLLEGE STATION	180	173	7	4.07%
CRC STATION	458	413	45	10.90%
FLORIN STATION	398	335	64	19.03%
FRANKLIN STATION	163	153	10	6.54%
FRUITRIDGE STATION	191	172	19	11.19%
GLOBE AVENUE STATION	108	96	13	13.34%
MARCONI/ARCADE STATION	333	284	49	17.25%
MEADOWVIEW STATION	367	316	51	16.24%
ROSEVILLE ROAD STATION	112	84	29	34.19%
ROYAL OAKS STATION	283	212	70	33.15%
ST ROSE OF LIMA PARK STATION	366	284	82	28.77%
SWANSTON STATION	114	92	21	23.07%
Watt/I-80 Station	674	533	141	26.55%
WATT/I-80 WEST STATION	14	18	(3)	-19.30%
<b>GOLD LINE - Rt#507</b>	<b>7,473</b>	<b>5,300</b>	<b>2,173</b>	<b>41.00%</b>
13TH STREET STATION	220	155	65	41.98%
16TH STREET STATION	792	508	284	55.94%
23RD STREET STATION	167	127	40	31.58%
29TH STREET STATION	560	386	174	45.12%
39TH STREET STATION	115	84	31	37.21%
48TH STREET STATION	99	71	28	38.98%
59TH STREET STATION	111	78	33	41.60%
7TH & CAPITOL STATION	304	253	51	20.18%
7TH & I/COUNTY CENTER STATION	115	80	35	44.43%
8TH & CAPITOL STATION	24	21	3	13.91%
8TH & H STATION	29	21	8	35.67%
8TH & K STATION	69	42	27	64.20%
8TH & O STATION	116	85	31	36.58%
ARCHIVES PLAZA STATION	94	69	26	37.58%
BUTTERFIELD STATION	134	107	27	25.41%
COLLEGE GREENS STATION	480	309	170	55.05%
CORDOVA TOWN CENTER STATION	206	155	51	33.14%
GLENN STATION	54	43	11	26.04%

HAZEL STATION	71	52	19	37.22%
HISTORIC FOLSOM STATION	261	185	76	41.10%
IRON POINT STATION	201	145	56	38.26%
MATHER FIELD/MILLS STATION	663	465	198	42.70%
POWER INN STATION	184	142	42	29.63%
SACRAMENTO VALLEY STATION	262	217	44	20.36%
ST ROSE OF LIMA PARK STATION	13	3	10	286.43%
STARFIRE STATION	179	124	55	44.02%
SUNRISE STATION	390	250	140	56.09%
TIBER STATION	153	99	54	54.14%
UNIVERSITY/65TH STREET STATION	521	378	144	38.00%
WATT/MANLOVE STATION	341	268	73	27.31%
ZINFANDEL STATION	543	377	166	44.15%
<b>Final Total - Boardings</b>	<b>14,935</b>	<b>11,400</b>	<b>3,535</b>	<b>31.01%</b>

### Average Saturday Alightings by Station by Line

Station Name	Jul19	Jul18	Difference	% Change
<b>BLUE LINE - Rt#533</b>	<b>7,598</b>	<b>5,721</b>	<b>1,876</b>	<b>32.80%</b>
12TH & I STATION	174	111	63	56.40%
13TH STREET STATION	220	149	71	47.64%
16TH STREET STATION	782	563	218	38.76%
47TH AVENUE STATION	220	144	77	53.28%
4TH AVE/WAYNE HULTGREN STATION	152	101	51	50.22%
7TH & CAPITOL STATION	253	183	70	38.45%
8TH & CAPITOL STATION	116	93	22	23.78%
8TH & O STATION	112	77	35	46.27%
ALKALI FLAT/LA VALENTINA STATION	367	281	86	30.74%
ARCHIVES PLAZA STATION	68	46	22	49.29%
ARDEN/DEL PASO STATION	467	348	119	34.10%
BROADWAY STATION	381	287	94	32.58%
CATHEDRAL SQUARE STATION	368	276	92	33.25%
CENTER PARKWAY STATION	97	88	8	9.31%
CITY COLLEGE STATION	181	145	36	24.44%
CRC STATION	545	407	138	33.92%
FLORIN STATION	412	327	86	26.17%
FRANKLIN STATION	156	120	36	30.13%
FRUITRIDGE STATION	201	150	51	33.84%
GLOBE AVENUE STATION	109	94	15	15.57%
MARCONI/ARCADE STATION	298	261	38	14.46%
MEADOWVIEW STATION	392	294	98	33.38%
ROSEVILLE ROAD STATION	124	87	37	42.82%
ROYAL OAKS STATION	290	221	69	31.10%
ST ROSE OF LIMA PARK STATION	223	208	15	7.30%
SWANSTON STATION	86	77	10	12.77%
Watt/I-80 Station	734	536	197	36.82%
WATT/I-80 WEST STATION	14	13	1	4.79%
<b>GOLD LINE - Rt#507</b>	<b>7,337</b>	<b>5,679</b>	<b>1,659</b>	<b>29.21%</b>
13TH STREET STATION	203	149	54	35.83%
16TH STREET STATION	765	581	185	31.83%



23RD STREET STATION	197	138	60	43.40%
29TH STREET STATION	528	374	154	41.28%
39TH STREET STATION	115	76	39	51.53%
48TH STREET STATION	96	79	17	21.65%
59TH STREET STATION	103	71	32	45.22%
7TH & CAPITOL STATION	32	22	9	41.51%
7TH & I/COUNTY CENTER STATION	24	15	10	65.43%
8TH & CAPITOL STATION	150	134	16	11.57%
8TH & H STATION	77	63	14	22.01%
8TH & K STATION	355	300	55	18.31%
8TH & O STATION	81	75	6	8.37%
ARCHIVES PLAZA STATION	85	75	10	13.62%
BUTTERFIELD STATION	130	112	18	15.61%
COLLEGE GREENS STATION	384	321	64	19.90%
CORDOVA TOWN CENTER STATION	218	169	49	29.22%
GLENN STATION	48	38	10	25.41%
HAZEL STATION	68	52	16	31.55%
HISTORIC FOLSOM STATION	260	214	46	21.73%
IRON POINT STATION	216	159	57	36.06%
MATHER FIELD/MILLS STATION	663	510	153	30.01%
POWER INN STATION	142	132	11	8.35%
SACRAMENTO VALLEY STATIO	315	233	82	34.98%
SACRAMENTO VALLEY STATION	9	3	6	193.45%
ST ROSE OF LIMA PARK STATION	0	0	0	3.25%
STARFIRE STATION	172	131	42	31.83%
SUNRISE STATION	348	277	71	25.57%
TIBER STATION	150	96	54	56.17%
UNIVERSITY/65TH STREET STATION	513	400	113	28.16%
WATT/MANLOVE STATION	377	268	109	40.67%
ZINFANDEL STATION	509	411	98	23.74%
<b>Final Total - Alightings</b>	<b>14,935</b>	<b>11,400</b>	<b>3,535</b>	<b>31.01%</b>

## Average Sunday Boardings by Station by Line

Station Name	Jul19	Jul18	Difference	% Change
<b>BLUE LINE - Rt#533</b>	<b>5,432</b>	<b>4,200</b>	<b>1,232</b>	<b>29.33%</b>
12TH & I STATION	116	91	26	28.14%
13TH STREET STATION	145	106	38	36.15%
16TH STREET STATION	523	384	139	36.23%
47TH AVENUE STATION	155	112	42	37.48%
4TH AVE/WAYNE HULTGREN STATION	100	73	28	38.04%
7TH & CAPITOL STATION	212	179	33	18.30%
8TH & CAPITOL STATION	66	46	19	41.90%
8TH & O STATION	83	63	20	31.78%
ALKALI FLAT/LA VALENTINA STATION	282	212	70	33.19%
ARCHIVES PLAZA STATION	45	37	7	19.85%
ARDEN/DEL PASO STATION	329	248	82	32.91%
BROADWAY STATION	285	197	89	45.03%
CATHEDRAL SQUARE STATION	268	197	70	35.65%
CENTER PARKWAY STATION	93	72	22	30.06%
CITY COLLEGE STATION	125	99	26	26.31%
CRC STATION	326	267	59	22.12%
FLORIN STATION	320	247	74	29.86%
FRANKLIN STATION	122	121	1	0.47%
FRUITRIDGE STATION	161	120	42	34.67%
GLOBE AVENUE STATION	86	75	11	14.72%
MARCONI/ARCADE STATION	186	158	27	17.31%
MEADOWVIEW STATION	276	215	61	28.27%
ROSEVILLE ROAD STATION	90	67	23	34.39%
ROYAL OAKS STATION	209	161	49	30.21%
ST ROSE OF LIMA PARK STATION	242	199	44	21.95%
SWANSTON STATION	61	57	4	6.16%
Watt/I-80 Station	469	355	114	32.06%
WATT/I-80 WEST STATION	18	12	6	46.26%
<b>GOLD LINE - Rt#507</b>	<b>5,361</b>	<b>4,000</b>	<b>1,361</b>	<b>34.03%</b>
13TH STREET STATION	188	126	62	49.09%
16TH STREET STATION	503	374	129	34.38%
23RD STREET STATION	133	90	43	47.33%
29TH STREET STATION	422	280	143	50.98%
39TH STREET STATION	83	63	20	32.13%
48TH STREET STATION	70	50	20	41.40%
59TH STREET STATION	77	53	24	45.26%
7TH & CAPITOL STATION	230	189	40	21.20%
7TH & I/COUNTY CENTER STATION	95	64	31	47.83%
8TH & CAPITOL STATION	22	16	6	34.15%
8TH & H STATION	21	19	2	9.75%
8TH & K STATION	45	30	15	50.35%
8TH & O STATION	91	67	24	36.12%
ARCHIVES PLAZA STATION	56	48	8	16.38%
BUTTERFIELD STATION	121	83	37	44.92%
COLLEGE GREENS STATION	286	234	51	21.90%
CORDOVA TOWN CENTER STATION	168	121	46	38.11%
GLENN STATION	25	28	(3)	-10.01%

HAZEL STATION	55	38	16	42.30%
HISTORIC FOLSOM STATION	147	132	15	11.19%
IRON POINT STATION	137	105	32	30.62%
MATHER FIELD/MILLS STATION	502	356	146	41.09%
POWER INN STATION	138	99	39	39.50%
SACRAMENTO VALLEY STATION	219	180	40	22.17%
STARFIRE STATION	139	99	41	41.24%
SUNRISE STATION	262	199	64	31.99%
TIBER STATION	89	72	17	24.14%
UNIVERSITY/65TH STREET STATION	391	297	93	31.42%
WATT/MANLOVE STATION	251	195	55	28.38%
ZINFANDEL STATION	394	290	104	35.93%
<b>Final Total - Boardings</b>	<b>10,793</b>	<b>8,200</b>	<b>2,593</b>	<b>31.62%</b>

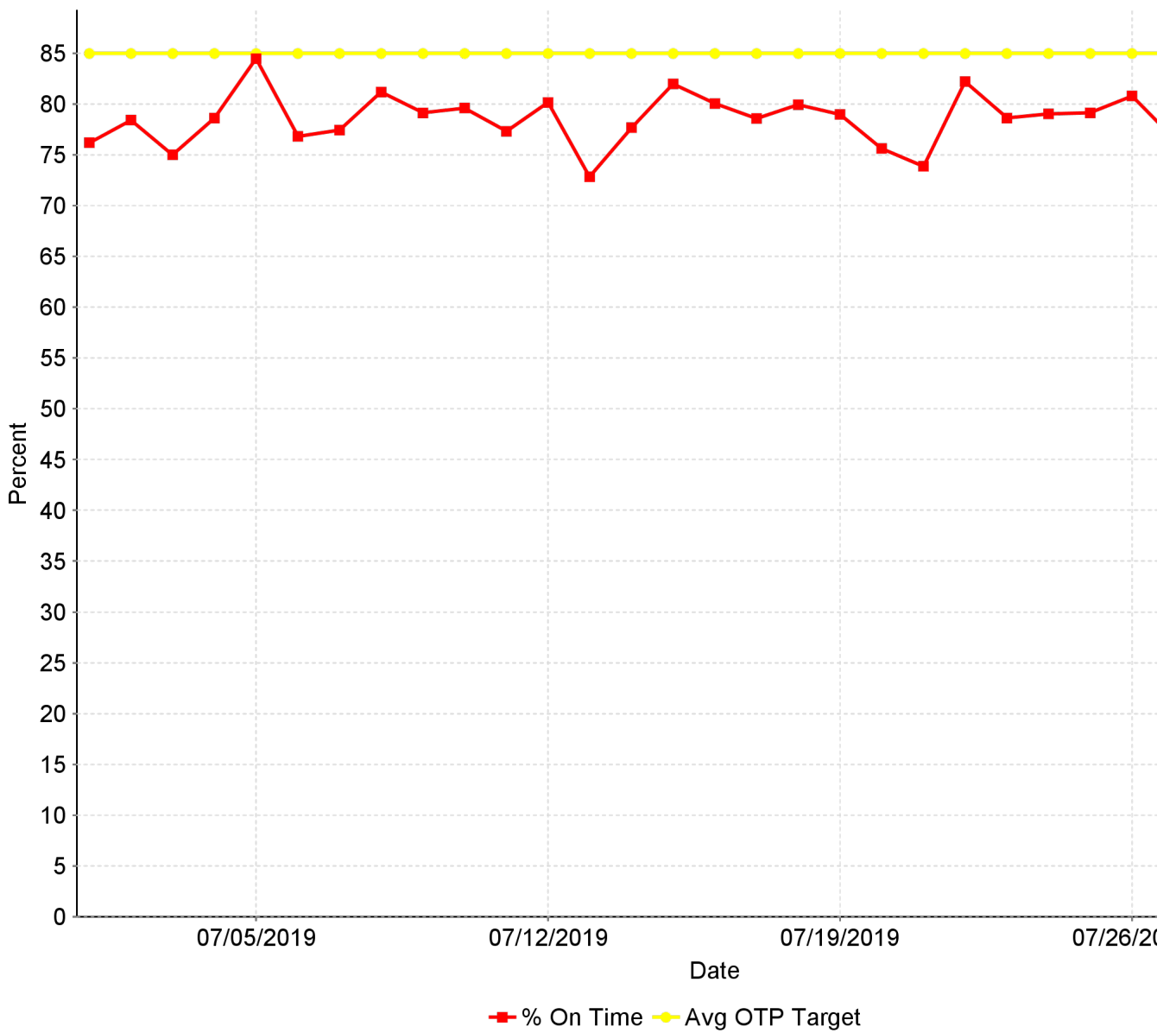
### Average Sunday Alightings by Station by Line

Station Name	Jul19	Jul18	Difference	% Change
<b>BLUE LINE - Rt#533</b>	<b>5,556</b>	<b>4,108</b>	<b>1,448</b>	<b>35.25%</b>
12TH & I STATION	112	80	32	40.69%
13TH STREET STATION	171	111	60	53.97%
16TH STREET STATION	548	414	134	32.44%
47TH AVENUE STATION	163	110	53	48.50%
4TH AVE/WAYNE HULTGREN STATION	97	68	30	43.99%
7TH & CAPITOL STATION	200	136	64	47.32%
8TH & CAPITOL STATION	89	70	19	27.31%
8TH & O STATION	67	55	12	22.07%
ALKALI FLAT/LA VALENTINA STATION	288	217	71	32.57%
ARCHIVES PLAZA STATION	43	34	9	26.53%
ARDEN/DEL PASO STATION	334	239	95	40.00%
BROADWAY STATION	278	207	71	34.30%
CATHEDRAL SQUARE STATION	294	192	102	53.35%
CENTER PARKWAY STATION	90	62	29	45.99%
CITY COLLEGE STATION	116	98	18	18.16%
CRC STATION	358	273	85	31.10%
EMPLOYEE PLATFORM STATION	40	25	15	62.51%
FLORIN STATION	354	250	103	41.36%
FRANKLIN STATION	122	99	23	22.75%
FRUITRIDGE STATION	170	115	55	47.35%
GLOBE AVENUE STATION	92	65	27	40.87%
MARCONI/ARCADE STATION	183	156	27	17.49%
MEADOWVIEW STATION	284	208	75	36.24%
ROSEVILLE ROAD STATION	65	63	3	4.43%
ROYAL OAKS STATION	234	170	63	37.25%
ST ROSE OF LIMA PARK STATION	205	145	61	41.97%
SWANSTON STATION	54	59	(5)	-7.80%
Watt/I-80 Station	501	382	119	31.24%
WATT/I-80 WEST STATION	4	8	(4)	-47.70%
<b>GOLD LINE - Rt#507</b>	<b>5,237</b>	<b>4,092</b>	<b>1,145</b>	<b>27.98%</b>
13TH STREET STATION	136	108	28	25.86%
16TH STREET STATION	553	402	151	37.41%

23RD STREET STATION	115	99	16	15.87%
29TH STREET STATION	378	270	108	39.81%
39TH STREET STATION	88	69	20	28.51%
48TH STREET STATION	67	54	13	23.41%
59TH STREET STATION	67	53	15	27.90%
7TH & CAPITOL STATION	24	19	5	27.07%
7TH & I/COUNTY CENTER STATION	15	10	4	39.54%
8TH & CAPITOL STATION	132	97	35	35.55%
8TH & H STATION	47	43	4	10.38%
8TH & K STATION	251	220	30	13.70%
8TH & O STATION	83	59	24	40.21%
ARCHIVES PLAZA STATION	51	54	(4)	-7.18%
BUTTERFIELD STATION	128	82	45	55.15%
COLLEGE GREENS STATION	269	236	33	14.03%
CORDOVA TOWN CENTER STATION	154	115	38	33.39%
GLENN STATION	21	23	(2)	-6.81%
HAZEL STATION	42	39	3	7.59%
HISTORIC FOLSOM STATION	139	138	1	0.73%
IRON POINT STATION	136	106	30	28.76%
MATHER FIELD/MILLS STATION	450	348	102	29.30%
POWER INN STATION	117	102	15	14.84%
SACRAMENTO VALLEY STATIO	236	170	65	38.32%
SACRAMENTO VALLEY STATION	9	1	8	678.03%
ST ROSE OF LIMA PARK STATION	1	1	0	25.04%
STARFIRE STATION	120	91	30	32.51%
SUNRISE STATION	277	227	50	22.23%
TIBER STATION	78	64	15	22.92%
UNIVERSITY/65TH STREET STATION	375	289	86	29.78%
WATT/MANLOVE STATION	270	196	74	37.56%
ZINFANDEL STATION	408	305	103	33.89%
<b>Final Total - Alightings</b>	<b>10,793</b>	<b>8,200</b>	<b>2,593</b>	<b>31.62%</b>

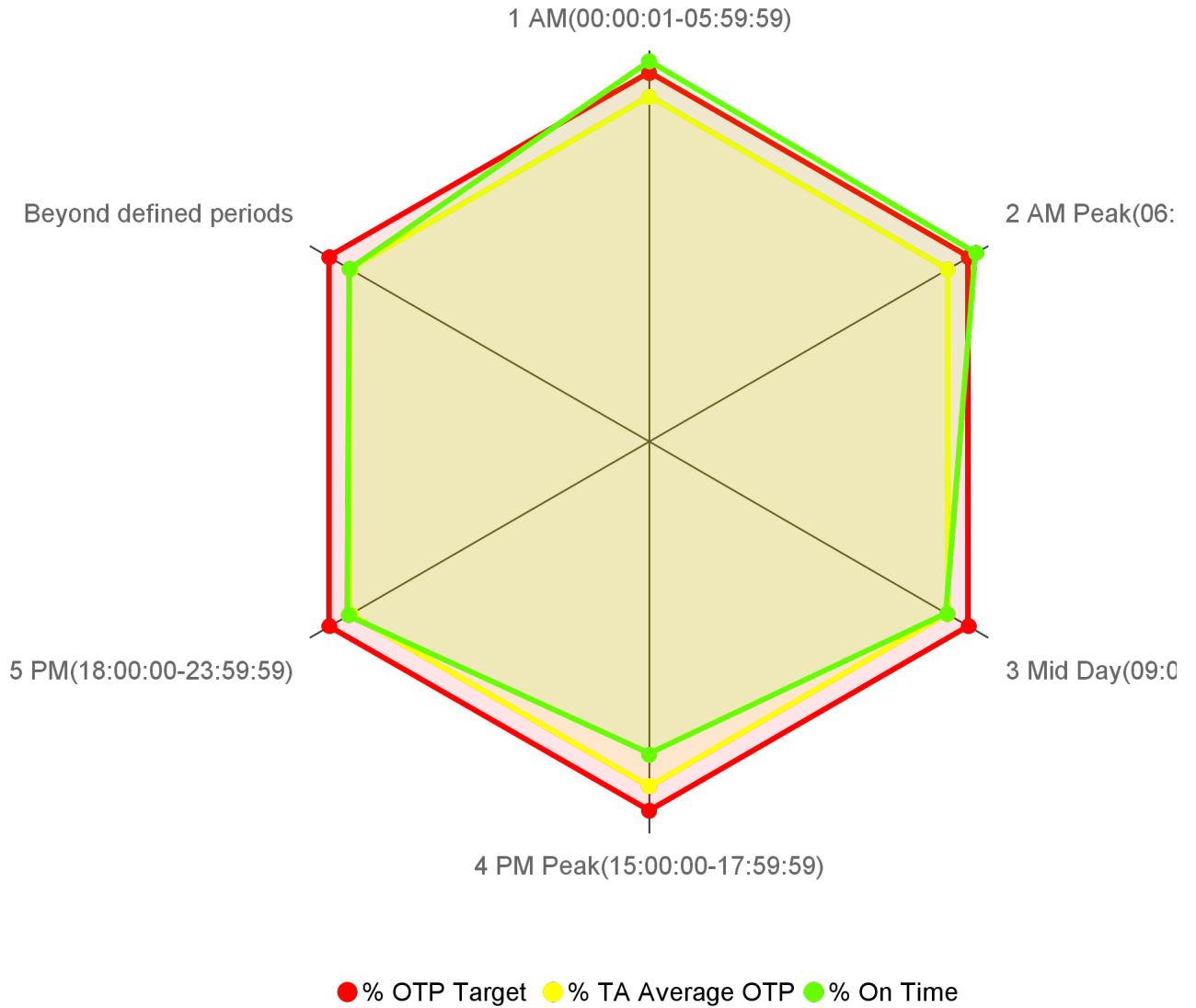
### CR-0105 On Time Performance KPI Trend

On Time Performance



### CR-0104 On Time Performance by Operational Period

On Time Performance by Operational Period

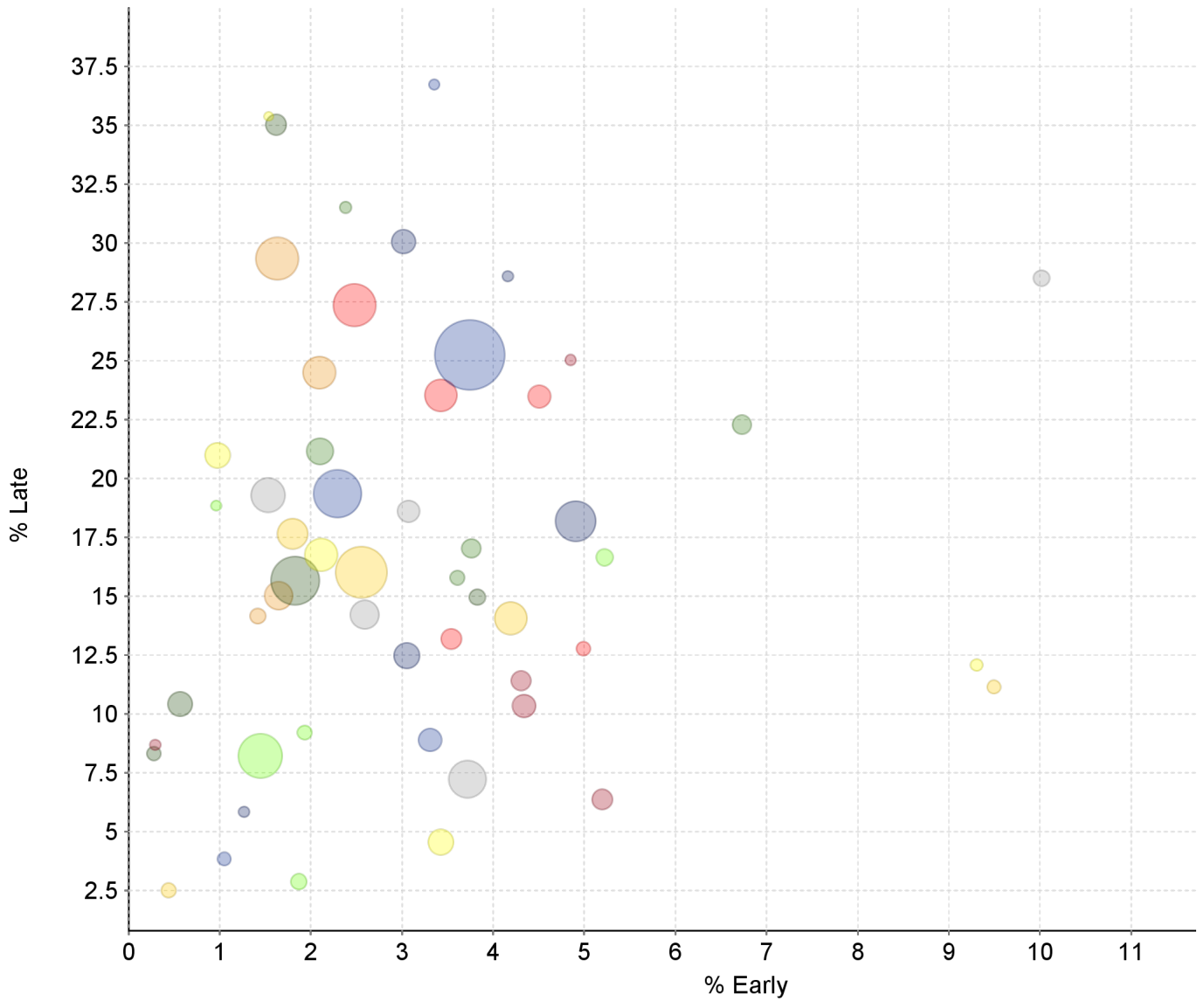


Transit Domain: Bus

Operational Period	% On Time	% TA Average OTP	% OTP Target	# On Time	# Processed
1 AM(00:00:01-05:59:59)	87.68	79.40	85.00	3,465	3,952
2 AM Peak(06:00:00-08:59:59)	87.00	79.40	85.00	52,524	60,372
3 Mid Day(09:00:00-14:59:59)	79.29	79.40	85.00	93,949	118,493
4 PM Peak(15:00:00-17:59:59)	72.11	79.40	85.00	49,670	68,880
5 PM(18:00:00-23:59:59)	79.84	79.40	85.00	41,278	51,704
Beyond defined periods	79.62	79.40	85.00	465	584

### CR-0106 On Time Performance Graph

Shows all Routes together on one chart for easy visual indication of outliers.



Route	% Early	% Late	Timepoints Processed
10 - 10 FSL	4.99	12.77	1,864
20 - 20	1.54	35.38	65
001 - Greenback	1.45	8.21	12,585
002 - Riverside	3.31	8.89	5,109
003 - Riverside Express	2.38	31.52	1,050
005 - Meadowview - Valley Hi via Massi	0.44	2.49	2,045
006 - Land Park	3.07	18.60	4,687
007 - Pocket Express	4.85	25.03	763
011 - Truxel Road	3.02	30.06	5,535
013 - Northgate	3.83	14.96	2,614
015 - Rio Linda Blvd - O St	2.09	24.49	8,508
019 - Rio Linda	4.51	23.48	4,881
021 - Sunrise - Citrus Heights	2.12	16.76	8,557
022 - Arden	5.22	16.64	2,776
023 - El Camino	2.29	19.35	13,991
024 - Madison - Greenback	3.61	15.78	1,996

Route	% Early	% Late	Timepoints Processed
025 - Marconi	4.19	14.06	8,513
026 - Fulton	1.53	19.29	9,082
028 - Fair Oaks - Folsom Blvd	4.31	11.40	3,832
029 - Arden - California Ave	4.16	28.59	745
030 - J Street (DASH)	1.83	15.66	14,219
033 - Dos Rios	1.42	14.15	2,396
034 - McKinley	3.54	13.18	4,151
038 - P/Q Streets	0.98	20.98	5,843
047 - Phoenix Park	1.93	9.20	1,967
051 - Broadway - Stockton	3.74	25.25	21,987
054 - Center Parkway	3.76	17.03	3,670
055 - Scottsdale	1.80	17.65	7,721
056 - Pocket - C.R.C.	2.59	14.21	7,100
061 - Fruitridge	5.20	6.36	4,118
062 - Freeport	4.91	18.18	11,395
065 - Delta Shores - Franklin - 65th S	1.62	35.03	4,262
067 - Franklin	1.63	29.34	12,082
068 - 44th Street	2.48	27.37	12,099
072 - Rosemont - Lincoln Village	3.43	4.55	5,982
074 - International	1.87	2.86	2,516
075 - Mather Field	1.05	3.83	1,619
080 - Watt - Elkhorn	2.10	21.15	6,378
081 - Florin - 65th Street	2.55	16.02	15,233
082 - Howe - 65th Street	3.72	7.22	10,165
084 - Watt - North Highlands	4.34	10.33	5,161
086 - San Juan - Silver Eagle	3.05	12.47	6,193
087 - Howe	0.57	10.41	5,647
088 - West El Camino	1.65	15.01	6,855
093 - Hillsdale	3.43	23.53	8,376
095 - Citrus Heights-Antelope Rd	9.30	12.07	1,193
103 - Auburn Blvd	0.96	18.85	520
109 - Hazel Express	3.35	36.74	656
170 - JIBE EASTSIDE	6.73	22.29	3,612
171 - JIBE WESTSIDE	9.49	11.14	1,580
172 - JIBE CENTRAL	10.02	28.52	2,546
175 - RANCHO CORDOVAN - SUNRIDGE PARK	0.29	8.68	680
176 - RANCHO CORDOVAN - ANATOLIA	1.27	5.83	789
177 - RANCHO CORDOVAN - VILLAGES	0.28	8.31	1,806
051X - W/X	12.53	8.76	4,270



## CR-0103 Overall On Time

Overall On Time Timepoints

On Time	Early	Late	Timepoints Processed
79.40%	3.04%	17.56%	303,985