



# Ridership Report (August 2019)

## Year to Date Summary

Category	FY20 YTD	FY19YTD	Difference	% Change
Bus**	1,542,508	1,530,603	11,905	0.8%
Light Rail	1,859,238	1,700,126	159,112	9.4%
System Total	3,401,746	3,230,729	171,017	5.3%

## Current Month Summary

Category	August 2019*	August 2018	Difference	% Change
Bus**	806,687	815,472	(8,785)	-1.1%
Light Rail	946,115	927,742	18,373	2.0%
System Total	1,752,802	1,743,214	9,588	0.6%

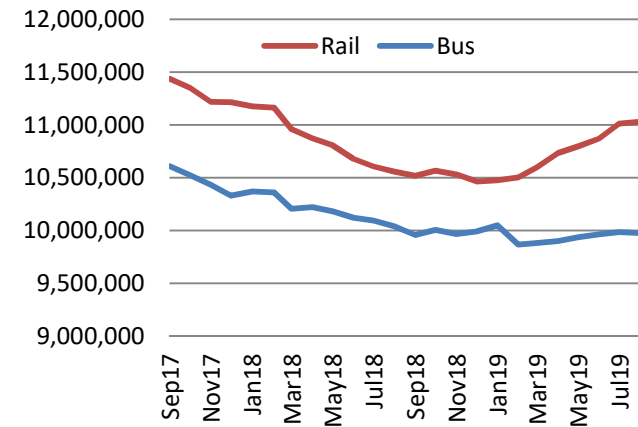
\*August 2019 had 1 less weekday than August 2018. Accounts for approximately 2.3% reduction in ridership

## Daily Summary

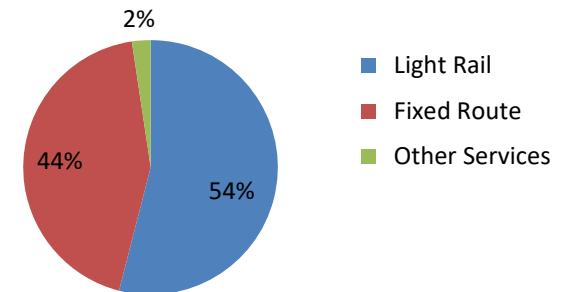
Category	August 2019	August 2018	Difference	% Change
Bus (M-F)	32,379	32,138	241	0.7%
Bus (Sat)	12,425	11,499	927	8.1%
Bus (Sun)	7,578	7,404	174	2.4%
Light Rail (M-F)	37,374	36,330	1,044	2.9%
Light Rail (Sat)	15,940	13,300	2,640	19.8%
Light Rail (Sun)	10,994	9,600	1,394	14.5%

\*\*Bus includes Fixed Route, CBS, SmART Ride, Folsom Fixed Route, Folsom DAR and other special services, Folsom ridership not complete. Totals for Folsom are estimates.

## Rolling 24 Month Trend



## August Ridership by Mode



Etran services will be included in the summary next month. August ridership was flat.

## Route Level Ridership Comparison (Fixed Route Bus)

### Weekday Route Comparison

Route	Aug 2019	Aug 2018	Difference	% Change
1	1,470	1,523	(53)	-3%
2	286	293	(7)	-2%
3	199	183	15	8%
5	166	125	41	33%
6	273	337	(64)	-19%
7	133	131	2	1%
11	641	563	79	14%
13	275	287	(12)	-4%
15	1,039	1,155	(116)	-10%
19	542	589	(47)	-8%
21	980	913	67	7%
22	247	255	(7)	-3%
23	1,502	1,466	36	2%
24	158	165	(7)	-4%
25	956	928	29	3%
26	1,005	1,049	(44)	-4%
28	291	289	3	1%
29	105	107	(2)	-2%
30	1,690	1,585	106	7%
33	249	266	(16)	-6%
34	232	190	42	22%
38	402	397	5	1%
47	104	187	(83)	-44%
51	2,850	3,197	(347)	-11%
54	235	195	40	20%
55	615	642	(27)	-4%
56	945	992	(47)	-5%
61	419	503	(84)	-17%
62	792	809	(17)	-2%
65	338	356	(18)	-5%
67	1,031	1,165	(134)	-12%
68	1,018	1,144	(126)	-11%
72	726	735	(10)	-1%
74	168	189	(20)	-11%
75	186	221	(35)	-16%
80	829	855	(26)	-3%
81	1,935	2,121	(186)	-9%
82	1,392	1,170	222	19%
84	665	677	(12)	-2%
85	-	19		
86	1,061	986	76	8%
87	1,014	786	228	29%
88	780	706	74	10%
93	758	742	16	2%
95	53	49	4	9%
103	70	61	9	14%
109	110	101	9	9%
170	236	-	236	#DIV/0!
171	86	-	86	#DIV/0!
172	174	216	(42)	-20%
175	36	33	3	10%
176	31	46	(15)	-33%
177	133	113	20	18%
205	-	-	-	#DIV/0!
206	-	-	-	#DIV/0!
210	-	-	-	#DIV/0!
211	-	-	-	#DIV/0!
212	-	-	-	#DIV/0!
214	-	-	-	#DIV/0!
227	-	-	-	#DIV/0!
228	-	-	-	#DIV/0!
246	-	-	-	#DIV/0!
248	-	-	-	#DIV/0!
252	-	-	-	#DIV/0!
255	-	-	-	#DIV/0!

### Saturday Route Comparison

Route	Aug 2019	Aug 2018	Difference	% Change
1	658	718	(60)	-8%
11	279	265	14	5%
15	489	503	(14)	-3%
19	251	242	9	4%
21	473	477	(4)	-1%
23	1,044	1,045	(1)	0%
25	363	370	(7)	-2%
26	299	278	21	7%
30	498	453	45	10%
38	170	163	7	4%
51	1,588	1,451	137	9%
54	77	91	(14)	-16%
55	199	213	(14)	-7%
56	567	466	101	22%
62	262	283	(21)	-7%
67	262	283	(21)	-7%
68	526	553	(27)	-5%
72	230	198	32	16%
75	-	129	(129)	-100%
80	561	579	(18)	-3%
81	1,101	1,051	50	5%
82	460	441	19	4%
84	300	281	19	7%
86	416	354	62	17%
87	362	289	73	25%
88	264	231	33	14%
93	291	241	50	21%

### Sunday Route Comparison

Route	Aug 2019	Aug 2018	Difference	% Change
1	505	532	(27)	-5%
15	383	416	(33)	-8%
19	192	205	(13)	-6%
21	318	359	(41)	-11%
23	699	662	37	6%
26	182	189	(7)	-4%
30	241	228	13	6%
38	153	129	24	18%
51	1,071	1,043	28	3%
55	143	150	(7)	-4%
56	276	276	0	0%
67	405	433	(28)	-7%
68	411	444	(33)	-7%
72	158	166	(8)	-5%
75	87	115	(28)	-24%
80	439	446	(7)	-2%
81	596	587	9	2%
82	354	359	(5)	-1%
86	273	223	50	23%
87	222	188	34	18%
88	238	193	45	23%
93	235	194	41	21%

Please note:

Route totals do not add up to monthly totals. Route by Route comparisons are only shown for routes that operated in each year. Additionally special service routes are not included on this page.

## Average Weekday Boardings by Station by Line

Station Name	Aug19	Aug18	Difference	% Change
<b>BLUE LINE - Total</b>	<b>18,789</b>	<b>18,900</b>	<b>(111)</b>	<b>-0.59%</b>
12TH & I STATION	502	476	26	5.55%
13TH STREET STATION	559	525	34	6.52%
16TH STREET STATION	1,572	1,632	(59)	-3.62%
47TH AVENUE STATION	536	560	(25)	-4.41%
4TH AVE/WAYNE HULTGREN STATION	341	556	(215)	-38.72%
7TH & CAPITOL STATION	734	733	0	0.05%
8TH & CAPITOL STATION	421	395	25	6.40%
8TH & O STATION	777	776	2	0.21%
ALKALI FLAT/LA VALENTINA STA	761	699	62	8.94%
ARCHIVES PLAZA STATION	534	520	14	2.78%
ARDEN/DEL PASO STATION	826	797	29	3.60%
BROADWAY STATION	682	664	18	2.73%
CATHEDRAL SQUARE STATION	772	790	(18)	-2.24%
CENTER PARKWAY STATION	248	268	(20)	-7.63%
CITY COLLEGE STATION	733	927	(193)	-20.87%
CRC STATION	1,277	1,328	(52)	-3.89%
FLORIN STATION	856	907	(51)	-5.59%
FRANKLIN STATION	744	712	33	4.58%
FRUITRIDGE STATION	417	457	(39)	-8.57%
GLOBE AVENUE STATION	271	263	7	2.84%
MARCONI/ARCADE STATION	855	709	146	20.56%
MEADOWVIEW STATION	905	899	5	0.57%
ROSEVILLE ROAD STATION	744	646	98	15.16%
ROYAL OAKS STATION	395	400	(5)	-1.21%
ST ROSE OF LIMA PARK STATION	586	607	(21)	-3.54%
SWANSTON STATION	250	251	(1)	-0.33%
Watt/I-80 Station	1,268	1,189	78	6.60%
WATT/I-80 WEST STATION	146	138	8	5.72%
<b>GOLD LINE - Total</b>	<b>18,032</b>	<b>17,000</b>	<b>1,032</b>	<b>6.07%</b>
13TH STREET STATION	687	624	63	10.10%
16TH STREET STATION	1,681	1,619	62	3.83%
23RD STREET STATION	514	482	32	6.56%
29TH STREET STATION	1,455	1,364	91	6.65%
39TH STREET STATION	272	263	9	3.36%
48TH STREET STATION	231	220	11	5.14%
59TH STREET STATION	227	246	(18)	-7.39%
7TH & CAPITOL STATION	956	896	60	6.72%
7TH & I/COUNTY CENTER STATION	369	341	28	8.17%
8TH & CAPITOL STATION	62	53	8	15.68%
8TH & H STATION	82	74	8	10.36%
8TH & K STATION	79	77	3	3.40%
8TH & O STATION	774	720	54	7.53%
ARCHIVES PLAZA STATION	610	583	27	4.58%
BUTTERFIELD STATION	535	510	25	4.91%
COLLEGE GREENS STATION	642	608	34	5.58%
CORDOVA TOWN CENTER STATION	497	446	51	11.45%
GLENN STATION	264	244	20	8.10%
HAZEL STATION	175	160	16	9.94%

HISTORIC FOLSOM STATION	507	466	41	8.82%
IRON POINT STATION	480	430	50	11.73%
MATHER FIELD/MILLS STATION	1,355	1,265	90	7.15%
POWER INN STATION	546	496	50	10.09%
SACRAMENTO VALLEY STATION	491	483	8	1.59%
STARFIRE STATION	286	284	2	0.58%
SUNRISE STATION	849	777	72	9.30%
TIBER STATION	285	273	12	4.49%
UNIVERSITY/65TH STREET STATION	1,318	1,313	5	0.41%
WATT/MANLOVE STATION	992	948	44	4.61%
ZINFANDEL STATION	803	724	79	10.87%
<b>GREEN LINE - Total</b>	<b>553</b>	<b>430</b>	<b>123</b>	<b>28.60%</b>
13TH STREET STATION	133	99	34	33.96%
7TH & CAPITOL STATION	40	28	13	46.60%
7TH & I/COUNTY CENTER STATION	40	26	13	49.60%
8TH & CAPITOL STATION	24	20	4	20.30%
8TH & K STATION	48	53	(5)	-9.29%
8TH & O STATION	33	24	9	37.48%
ARCHIVES PLAZA STATION	32	27	5	18.76%
TOWNSHIP 9 STATION	204	153	50	32.67%
<b>All Stations</b>	<b>37,374</b>	<b>36,330</b>	<b>1,044</b>	<b>2.87%</b>

## Average Weekday Alightings by Station by Line

Station Name	Aug19	Aug18	Difference	% Change
<b>BLUE LINE - Rt#533</b>	<b>18,347</b>	<b>17,861</b>	<b>486</b>	<b>2.72%</b>
12TH & I STATION	515	477	38	7.96%
13TH STREET STATION	547	520	26	5.01%
16TH STREET STATION	1,618	1,591	28	1.73%
47TH AVENUE STATION	527	547	(20)	-3.72%
4TH AVE/WAYNE HULTGREN STATION	321	430	(109)	-25.31%
7TH & CAPITOL STATION	637	614	23	3.75%
8TH & CAPITOL STATION	479	470	9	1.89%
8TH & O STATION	695	674	21	3.08%
ALKALI FLAT/LA VALENTINA STATION	741	662	79	11.86%
ARCHIVES PLAZA STATION	479	456	23	5.06%
ARDEN/DEL PASO STATION	812	794	18	2.25%
BROADWAY STATION	677	653	25	3.78%
CATHEDRAL SQUARE STATION	811	788	23	2.91%
CENTER PARKWAY STATION	200	205	(5)	-2.30%
CITY COLLEGE STATION	722	808	(86)	-10.61%
CRC STATION	1,392	1,327	65	4.87%
FLORIN STATION	860	868	(8)	-0.92%
FRANKLIN STATION	690	650	40	6.23%
FRUITRIDGE STATION	390	431	(41)	-9.43%
GLOBE AVENUE STATION	273	261	12	4.48%
MARCONI/ARCADE STATION	704	649	55	8.47%
MEADOWVIEW STATION	839	848	(9)	-1.07%
ROSEVILLE ROAD STATION	716	627	89	14.23%
ROYAL OAKS STATION	373	384	(11)	-2.93%
ST ROSE OF LIMA PARK STATION	509	488	21	4.28%
SWANSTON STATION	241	245	(4)	-1.62%
Watt/I-80 Station	1,375	1,192	184	15.40%
WATT/I-80 WEST STATION	134	134	1	0.56%
<b>GOLD LINE - Rt#507</b>	<b>18,465</b>	<b>17,930</b>	<b>535</b>	<b>2.98%</b>
13TH STREET STATION	611	545	66	12.12%
16TH STREET STATION	1,750	1,724	26	1.50%
23RD STREET STATION	510	498	12	2.33%
29TH STREET STATION	1,461	1,412	49	3.48%
39TH STREET STATION	279	272	8	2.85%
48TH STREET STATION	247	251	(3)	-1.25%
59TH STREET STATION	250	275	(25)	-9.05%
7TH & CAPITOL STATION	65	59	6	10.44%
7TH & I/COUNTY CENTER STATION	27	26	1	2.22%
8TH & CAPITOL STATION	718	689	29	4.26%
8TH & H STATION	354	349	5	1.52%
8TH & K STATION	677	681	(4)	-0.61%
8TH & O STATION	678	664	15	2.20%
ARCHIVES PLAZA STATION	636	626	10	1.57%
BUTTERFIELD STATION	522	522	0	0.01%
COLLEGE GREENS STATION	623	617	6	1.01%
CORDOVA TOWN CENTER STATION	460	439	21	4.70%
GLENN STATION	250	245	5	2.12%

HAZEL STATION	165	162	2	1.48%
HISTORIC FOLSOM STATION	539	487	53	10.80%
IRON POINT STATION	478	438	40	9.14%
MATHER FIELD/MILLS STATION	1,304	1,274	31	2.42%
POWER INN STATION	537	515	22	4.23%
SACRAMENTO VALLEY STATION	471	439	31	7.12%
SACRAMENTO VALLEY STATION	346	241	105	43.48%
STARFIRE STATION	264	265	(1)	-0.53%
SUNRISE STATION	790	791	(1)	-0.15%
TIBER STATION	282	276	6	2.22%
UNIVERSITY/65TH STREET STATION	1,347	1,382	(35)	-2.53%
WATT/MANLOVE STATION	1,008	989	18	1.85%
ZINFANDEL STATION	814	774	39	5.10%
<b>GREEN LINE - Rt#519</b>	<b>562</b>	<b>539</b>	<b>23</b>	<b>4.24%</b>
13TH STREET STATION	186	173	12	7.01%
7TH & CAPITOL STATION	52	43	9	20.36%
7TH & I/COUNTY CENTER STATIO	65	60	5	7.93%
8TH & CAPITOL STATION	12	11	1	11.12%
8TH & K STATION	18	32	(14)	-44.21%
8TH & O STATION	30	26	4	14.48%
ARCHIVES PLAZA STATION	24	28	(4)	-13.02%
TOWNSHIP 9 STATION	175	165	10	5.98%
<b>All Stations</b>	<b>37,374</b>	<b>36,330</b>	<b>1,044</b>	<b>2.87%</b>

## Average Saturday Boardings by Station by Line

Station Name	Aug19	Aug18	Difference	% Change
<b>BLUE LINE - Rt#533</b>	<b>8,027</b>	<b>6,600</b>	<b>1,427</b>	<b>21.62%</b>
12TH & I STATION	162	134	28	21.10%
13TH STREET STATION	187	168	19	11.40%
16TH STREET STATION	701	602	99	16.40%
47TH AVENUE STATION	175	164	11	6.63%
4TH AVE/WAYNE HULTGREN STATION	130	120	11	8.87%
7TH & CAPITOL STATION	316	285	31	10.70%
8TH & CAPITOL STATION	75	72	3	3.77%
8TH & O STATION	110	93	17	18.15%
ALKALI FLAT/LA VALENTINA STATION	382	325	58	17.75%
ARCHIVES PLAZA STATION	81	67	15	22.25%
ARDEN/DEL PASO STATION	494	394	100	25.46%
BROADWAY STATION	400	307	92	30.06%
CATHEDRAL SQUARE STATION	368	289	79	27.33%
CENTER PARKWAY STATION	146	115	31	26.91%
CITY COLLEGE STATION	229	187	42	22.52%
CRC STATION	535	447	88	19.66%
FLORIN STATION	485	362	123	33.91%
FRANKLIN STATION	183	165	17	10.56%
FRUITRIDGE STATION	202	186	16	8.70%
GLOBE AVENUE STATION	116	104	12	11.79%
MARCONI/ARCADE STATION	563	308	255	82.88%
MEADOWVIEW STATION	411	342	70	20.47%
ROSEVILLE ROAD STATION	79	91	(11)	-12.55%
ROYAL OAKS STATION	282	230	52	22.57%
ST ROSE OF LIMA PARK STATION	352	308	44	14.31%
SWANSTON STATION	126	100	26	26.25%
Watt/I-80 Station	676	577	99	17.21%
WATT/I-80 WEST STATION	14	19	(6)	-29.04%
<b>GOLD LINE - Rt#507</b>	<b>7,913</b>	<b>6,700</b>	<b>1,213</b>	<b>18.10%</b>
13TH STREET STATION	265	196	69	35.33%
16TH STREET STATION	807	642	165	25.74%
23RD STREET STATION	180	161	19	11.91%
29TH STREET STATION	568	488	80	16.43%
39TH STREET STATION	115	106	9	8.57%
48TH STREET STATION	88	90	(2)	-1.95%
59TH STREET STATION	89	99	(10)	-9.88%
7TH & CAPITOL STATION	366	320	46	14.36%
7TH & I/COUNTY CENTER STATION	137	101	36	35.70%
8TH & CAPITOL STATION	32	27	5	17.17%
8TH & H STATION	37	27	10	38.33%
8TH & K STATION	62	53	8	15.88%
8TH & O STATION	143	108	35	32.48%
ARCHIVES PLAZA STATION	107	87	20	23.08%
BUTTERFIELD STATION	137	135	2	1.82%
COLLEGE GREENS STATION	475	391	84	21.48%
CORDOVA TOWN CENTER STATION	234	196	39	19.78%
GLENN STATION	66	54	11	20.98%

HAZEL STATION	68	65	3	4.75%
HISTORIC FOLSOM STATION	282	234	48	20.72%
IRON POINT STATION	228	184	44	24.07%
MATHER FIELD/MILLS STATION	705	588	118	20.01%
POWER INN STATION	191	180	11	6.27%
SACRAMENTO VALLEY STATION	321	275	47	16.96%
ST ROSE OF LIMA PARK STATION	4	4	0	4.26%
STARFIRE STATION	193	157	36	22.91%
SUNRISE STATION	333	316	17	5.52%
TIBER STATION	133	125	7	5.79%
UNIVERSITY/65TH STREET STATION	526	478	48	10.10%
WATT/MANLOVE STATION	403	339	64	18.95%
ZINFANDEL STATION	617	476	140	29.45%
<b>Final Total - Boardings</b>	<b>15,940</b>	<b>13,300</b>	<b>2,640</b>	<b>19.85%</b>

### Average Saturday Alightings by Station by Line

Station Name	Aug19	Aug18	Difference	% Change
<b>BLUE LINE - Rt#533</b>	<b>8,608</b>	<b>6,675</b>	<b>1,933</b>	<b>28.96%</b>
12TH & I STATION	170	130	40	30.86%
13TH STREET STATION	226	174	51	29.53%
16TH STREET STATION	820	657	163	24.84%
47TH AVENUE STATION	209	168	42	24.79%
4TH AVE/WAYNE HULTGREN STATION	137	118	20	16.80%
7TH & CAPITOL STATION	266	213	53	24.65%
8TH & CAPITOL STATION	131	109	22	20.30%
8TH & O STATION	126	89	36	40.81%
ALKALI FLAT/LA VALENTINA STATION	437	328	109	33.30%
ARCHIVES PLAZA STATION	77	53	24	44.98%
ARDEN/DEL PASO STATION	512	406	106	26.04%
BROADWAY STATION	464	335	129	38.40%
CATHEDRAL SQUARE STATION	414	322	92	28.52%
CENTER PARKWAY STATION	139	103	36	35.02%
CITY COLLEGE STATION	233	170	63	37.17%
CRC STATION	607	475	132	27.84%
FLORIN STATION	501	381	120	31.36%
FRANKLIN STATION	189	140	49	35.36%
FRUITRIDGE STATION	221	175	47	26.63%
GLOBE AVENUE STATION	122	110	12	10.89%
MARCONI/ARCADE STATION	522	304	218	71.64%
MEADOWVIEW STATION	419	342	77	22.36%
ROSEVILLE ROAD STATION	125	101	23	23.15%
ROYAL OAKS STATION	297	258	39	15.19%
ST ROSE OF LIMA PARK STATION	294	243	52	21.27%
SWANSTON STATION	115	89	26	29.12%
Watt/I-80 Station	768	626	143	22.83%
WATT/I-80 WEST STATION	12	16	(4)	-23.18%
<b>GOLD LINE - Rt#507</b>	<b>7,332</b>	<b>6,625</b>	<b>707</b>	<b>10.67%</b>
13TH STREET STATION	202	174	28	16.03%
16TH STREET STATION	781	677	104	15.29%



23RD STREET STATION	169	161	8	5.25%
29TH STREET STATION	475	436	39	9.01%
39TH STREET STATION	97	89	8	9.52%
48TH STREET STATION	95	92	3	3.10%
59TH STREET STATION	86	83	3	3.12%
7TH & CAPITOL STATION	43	26	17	63.76%
7TH & I/COUNTY CENTER STATION	20	17	3	15.70%
8TH & CAPITOL STATION	166	157	9	5.65%
8TH & H STATION	98	73	25	33.86%
8TH & K STATION	368	350	18	5.08%
8TH & O STATION	97	87	10	11.36%
ARCHIVES PLAZA STATION	85	88	(3)	-2.90%
BUTTERFIELD STATION	128	131	(3)	-2.28%
COLLEGE GREENS STATION	452	374	78	20.85%
CORDOVA TOWN CENTER STATION	228	197	31	15.97%
GLENN STATION	51	44	7	15.21%
HAZEL STATION	58	60	(2)	-4.10%
HISTORIC FOLSOM STATION	234	250	(16)	-6.38%
IRON POINT STATION	215	185	29	15.91%
MATHER FIELD/MILLS STATION	645	595	50	8.39%
POWER INN STATION	160	153	6	4.02%
SACRAMENTO VALLEY STATIO	335	272	63	23.04%
SACRAMENTO VALLEY STATION	-	4	(4)	-100.00%
ST ROSE OF LIMA PARK STATION	-	0	(0)	-100.00%
STARFIRE STATION	168	153	16	10.30%
SUNRISE STATION	322	323	(1)	-0.42%
TIBER STATION	119	112	7	5.96%
UNIVERSITY/65TH STREET STATION	533	467	66	14.13%
WATT/MANLOVE STATION	332	313	19	6.17%
ZINFANDEL STATION	570	480	90	18.80%
<b>Final Total - Alightings</b>	<b>15,940</b>	<b>13,300</b>	<b>2,640</b>	<b>19.85%</b>

## Average Sunday Boardings by Station by Line

Station Name	Aug19	Aug18	Difference	% Change
<b>BLUE LINE - Rt#533</b>	<b>5,449</b>	<b>4,800</b>	<b>649</b>	<b>13.52%</b>
12TH & I STATION	109	104	5	5.23%
13TH STREET STATION	135	122	13	10.68%
16TH STREET STATION	501	439	62	14.11%
47TH AVENUE STATION	137	128	8	6.55%
4TH AVE/WAYNE HULTGREN STATION	93	83	10	12.37%
7TH & CAPITOL STATION	229	205	24	11.50%
8TH & CAPITOL STATION	59	53	6	11.75%
8TH & O STATION	79	72	7	9.58%
ALKALI FLAT/LA VALENTINA STATION	267	242	25	10.40%
ARCHIVES PLAZA STATION	41	43	(2)	-4.90%
ARDEN/DEL PASO STATION	326	283	43	15.05%
BROADWAY STATION	290	225	65	29.07%
CATHEDRAL SQUARE STATION	250	226	24	10.68%
CENTER PARKWAY STATION	101	82	19	23.52%
CITY COLLEGE STATION	141	113	28	24.84%
CRC STATION	325	305	20	6.53%
FLORIN STATION	332	282	51	18.00%
FRANKLIN STATION	154	139	15	11.00%
FRUITRIDGE STATION	145	137	8	5.91%
GLOBE AVENUE STATION	97	86	11	12.47%
MARCONI/ARCADE STATION	226	181	45	24.96%
MEADOWVIEW STATION	281	246	35	14.42%
ROSEVILLE ROAD STATION	89	76	13	16.63%
ROYAL OAKS STATION	208	184	24	13.24%
ST ROSE OF LIMA PARK STATION	252	227	25	11.16%
SWANSTON STATION	66	65	1	1.54%
Watt/I-80 Station	466	406	60	14.74%
WATT/I-80 WEST STATION	13	14	(1)	-8.37%
<b>GOLD LINE - Rt#507</b>	<b>5,545</b>	<b>4,800</b>	<b>745</b>	<b>15.52%</b>
13TH STREET STATION	163	152	12	7.67%
16TH STREET STATION	532	449	83	18.51%
23RD STREET STATION	125	109	17	15.58%
29TH STREET STATION	390	336	54	16.18%
39TH STREET STATION	87	75	12	15.50%
48TH STREET STATION	65	59	6	9.27%
59TH STREET STATION	68	64	4	6.94%
7TH & CAPITOL STATION	249	227	21	9.34%
7TH & I/COUNTY CENTER STATION	74	77	(3)	-3.88%
8TH & CAPITOL STATION	25	19	6	28.94%
8TH & H STATION	29	23	7	30.33%
8TH & K STATION	43	36	7	19.36%
8TH & O STATION	94	81	14	16.78%
ARCHIVES PLAZA STATION	53	58	(4)	-7.47%
BUTTERFIELD STATION	91	100	(10)	-9.59%
COLLEGE GREENS STATION	342	281	61	21.65%
CORDOVA TOWN CENTER STATION	192	146	47	31.93%
GLENN STATION	46	33	13	40.38%

HAZEL STATION	42	46	(3)	-7.55%
HISTORIC FOLSOM STATION	196	159	37	23.15%
IRON POINT STATION	172	126	46	36.60%
MATHER FIELD/MILLS STATION	537	427	110	25.82%
POWER INN STATION	134	119	15	13.00%
SACRAMENTO VALLEY STATION	231	216	16	7.32%
STARFIRE STATION	103	118	(16)	-13.23%
SUNRISE STATION	282	239	43	18.12%
TIBER STATION	102	86	15	17.92%
UNIVERSITY/65TH STREET STATION	408	357	51	14.40%
WATT/MANLOVE STATION	259	235	25	10.64%
ZINFANDEL STATION	409	348	61	17.65%
<b>Final Total - Boardings</b>	<b>10,994</b>	<b>9,600</b>	<b>1,394</b>	<b>14.52%</b>

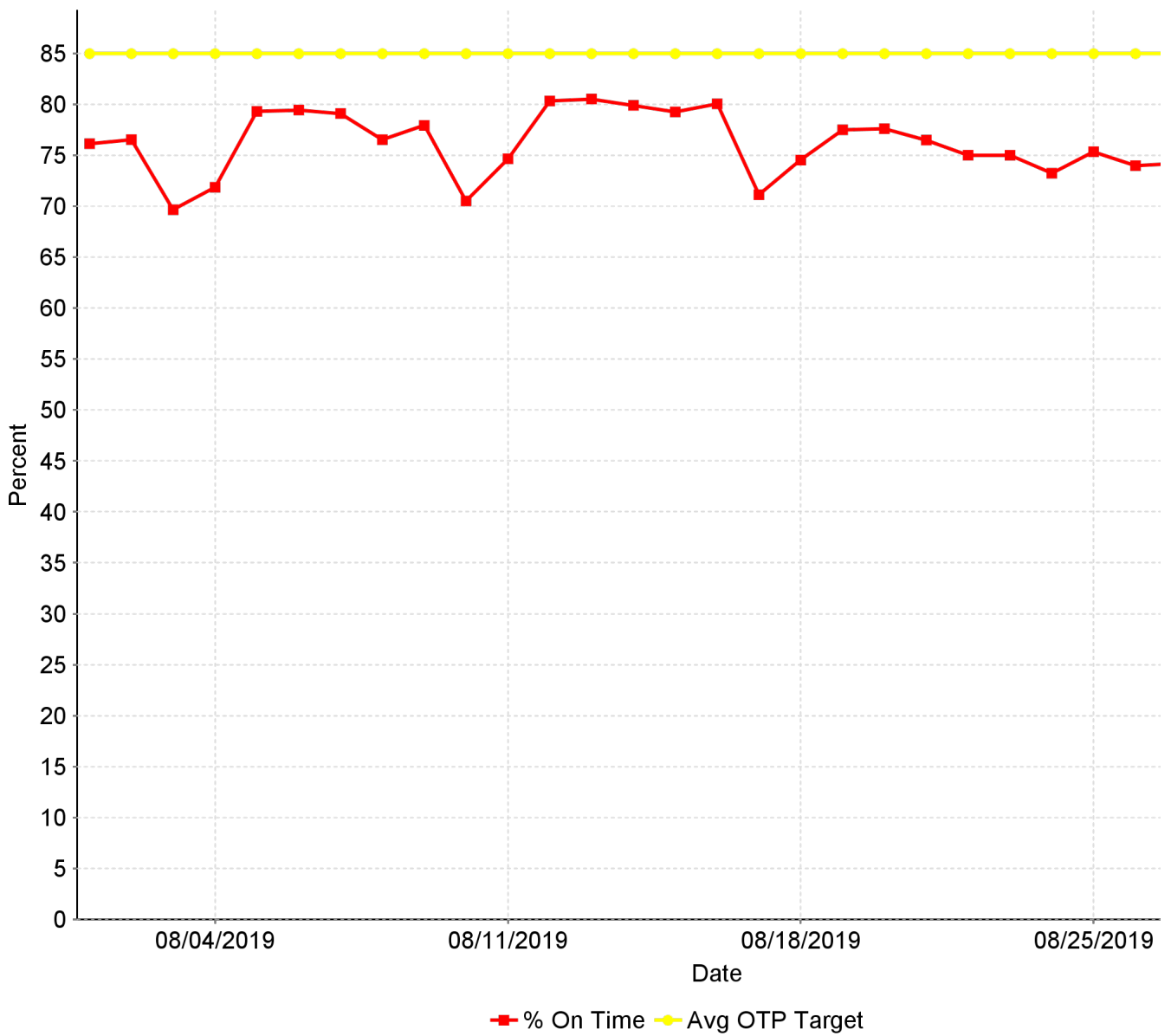
### Average Sunday Alightings by Station by Line

Station Name	Aug19	Aug18	Difference	% Change
<b>BLUE LINE - Rt#533</b>	<b>5,865</b>	<b>4,810</b>	<b>1,055</b>	<b>21.94%</b>
12TH & I STATION	125	93	32	34.21%
13TH STREET STATION	162	130	32	24.93%
16TH STREET STATION	581	484	96	19.91%
47TH AVENUE STATION	154	129	25	19.75%
4TH AVE/WAYNE HULTGREN STATION	94	79	15	18.99%
7TH & CAPITOL STATION	201	159	42	26.29%
8TH & CAPITOL STATION	93	82	11	13.50%
8TH & O STATION	80	65	15	23.37%
ALKALI FLAT/LA VALENTINA STATION	305	255	50	19.76%
ARCHIVES PLAZA STATION	51	40	12	29.59%
ARDEN/DEL PASO STATION	332	279	53	18.87%
BROADWAY STATION	318	242	76	31.25%
CATHEDRAL SQUARE STATION	256	225	32	14.12%
CENTER PARKWAY STATION	95	73	22	30.69%
CITY COLLEGE STATION	144	115	29	25.25%
CRC STATION	366	319	47	14.72%
EMPLOYEE PLATFORM STATION	37	29	8	29.42%
FLORIN STATION	371	293	78	26.61%
FRANKLIN STATION	146	116	30	26.14%
FRUITRIDGE STATION	160	135	25	18.77%
GLOBE AVENUE STATION	88	76	12	15.20%
MARCONI/ARCADE STATION	253	183	70	38.44%
MEADOWVIEW STATION	299	244	55	22.61%
ROSEVILLE ROAD STATION	118	73	44	60.69%
ROYAL OAKS STATION	209	199	10	4.96%
ST ROSE OF LIMA PARK STATION	177	169	8	4.65%
SWANSTON STATION	81	69	12	18.14%
Watt/I-80 Station	556	447	109	24.42%
WATT/I-80 WEST STATION	12	9	3	34.21%
<b>GOLD LINE - Rt#507</b>	<b>5,129</b>	<b>4,790</b>	<b>339</b>	<b>7.07%</b>
13TH STREET STATION	138	126	12	9.50%
16TH STREET STATION	514	471	43	9.17%

23RD STREET STATION	124	116	8	7.02%
29TH STREET STATION	347	316	31	9.75%
39TH STREET STATION	85	80	4	5.05%
48TH STREET STATION	60	64	(4)	-6.34%
59TH STREET STATION	60	62	(2)	-2.73%
7TH & CAPITOL STATION	33	22	11	51.10%
7TH & I/COUNTY CENTER STATION	12	12	(0)	-2.03%
8TH & CAPITOL STATION	112	114	(2)	-2.02%
8TH & H STATION	67	50	17	33.63%
8TH & K STATION	272	258	14	5.58%
8TH & O STATION	82	69	13	18.26%
ARCHIVES PLAZA STATION	50	64	(14)	-22.29%
BUTTERFIELD STATION	92	97	(4)	-4.26%
COLLEGE GREENS STATION	326	276	50	17.98%
CORDOVA TOWN CENTER STATION	171	135	36	27.01%
GLENN STATION	24	26	(3)	-10.99%
HAZEL STATION	43	45	(2)	-4.01%
HISTORIC FOLSOM STATION	161	162	(1)	-0.39%
IRON POINT STATION	149	124	26	20.80%
MATHER FIELD/MILLS STATION	425	408	17	4.26%
POWER INN STATION	133	120	13	10.94%
SACRAMENTO VALLEY STATIO	203	199	4	1.77%
SACRAMENTO VALLEY STATION	-	1	(1)	-100.00%
ST ROSE OF LIMA PARK STATION	-	1	(1)	-100.00%
STARFIRE STATION	103	106	(4)	-3.52%
SUNRISE STATION	271	265	6	2.09%
TIBER STATION	74	75	(0)	-0.12%
UNIVERSITY/65TH STREET STATION	362	338	24	7.10%
WATT/MANLOVE STATION	241	230	11	4.85%
ZINFANDEL STATION	394	357	36	10.21%
<b>Final Total - Alightings</b>	<b>10,994</b>	<b>9,600</b>	<b>1,394</b>	<b>14.52%</b>

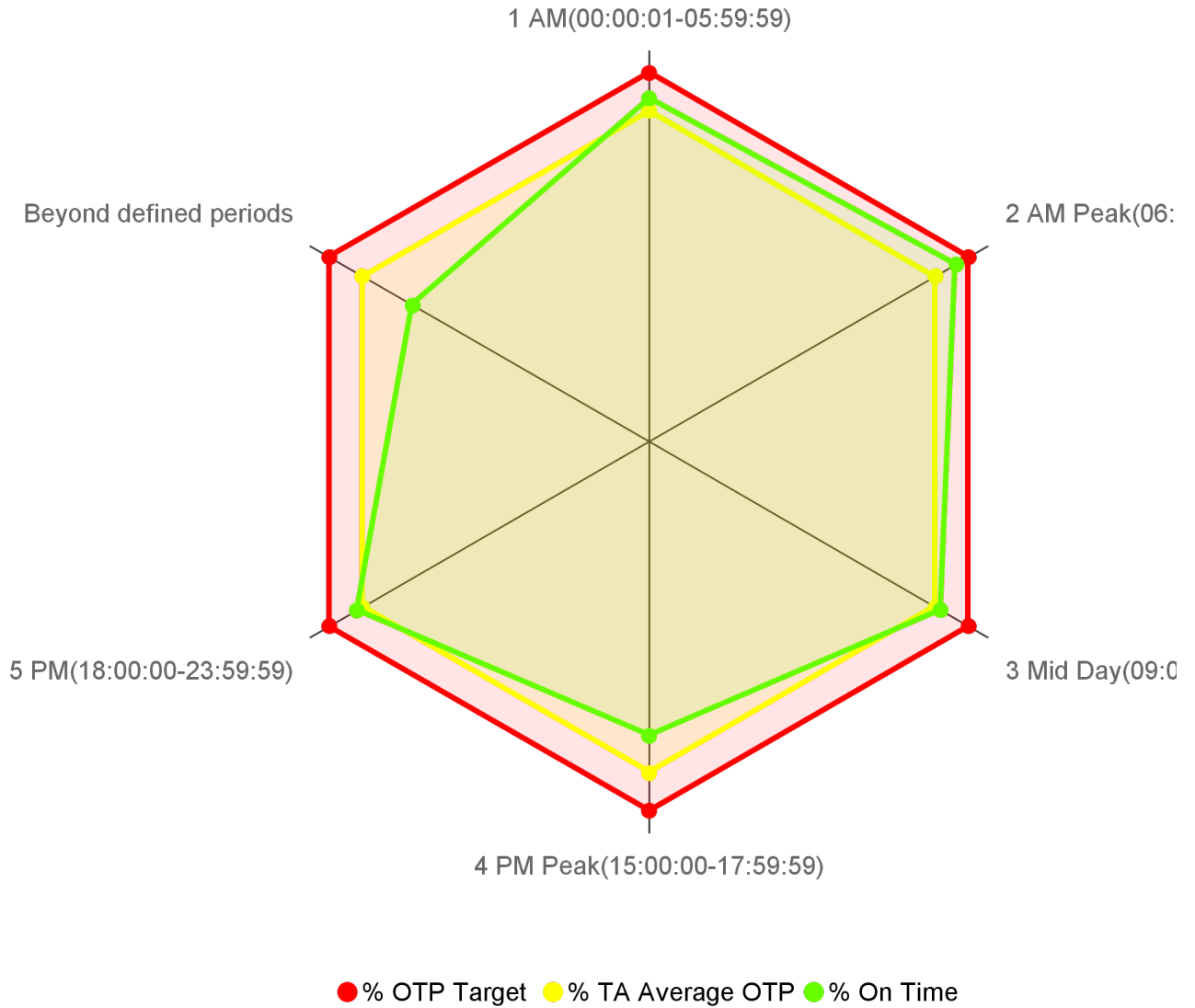
### CR-0105 On Time Performance KPI Trend

On Time Performance



### CR-0104 On Time Performance by Operational Period

On Time Performance by Operational Period

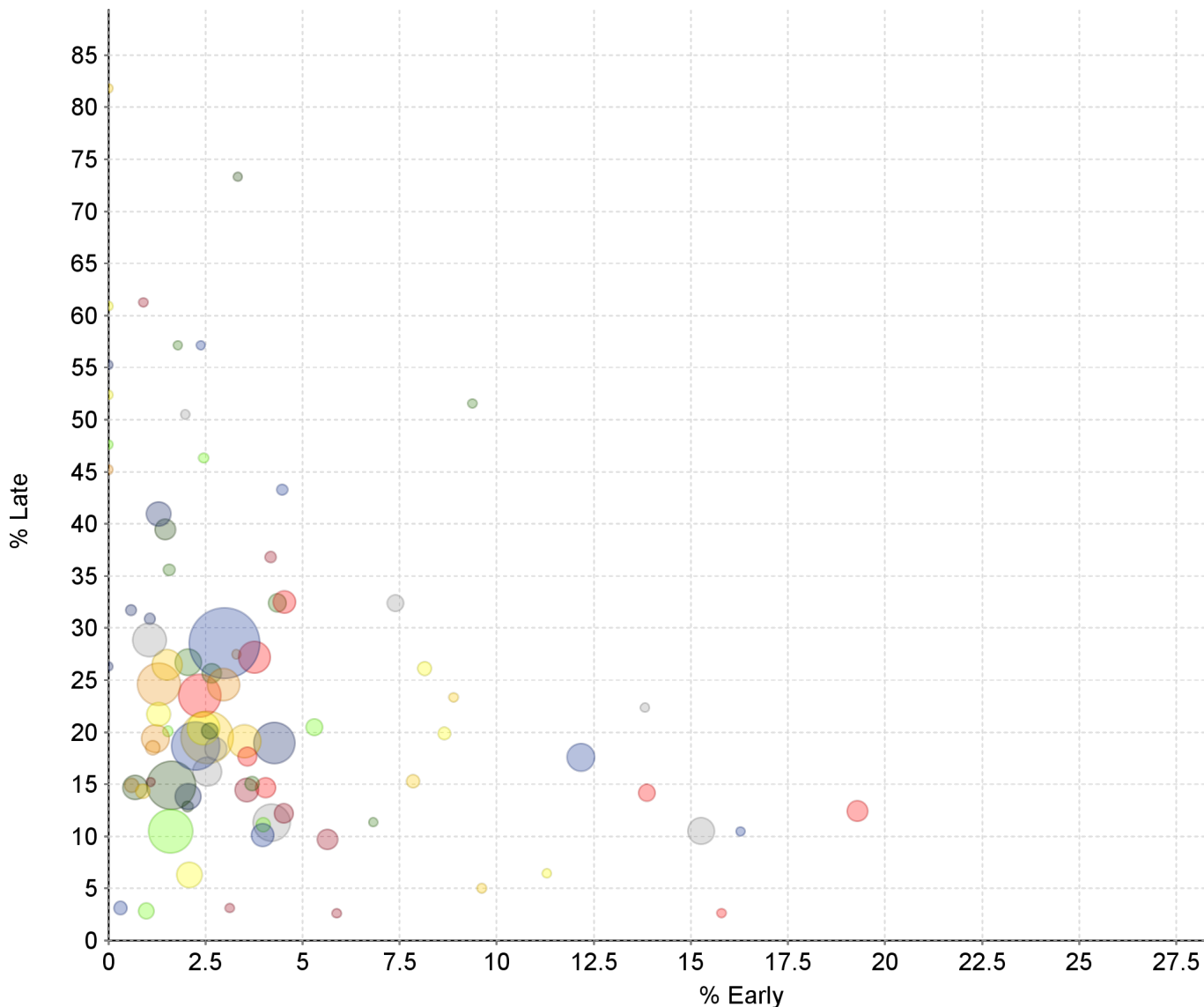


Transit Domain: Bus

Operational Period	% On Time	% TA Average OTP	% OTP Target	# On Time	# Processed
1 AM(00:00:01-05:59:59)	79.14	76.29	85.00	5,034	6,361
2 AM Peak(06:00:00-08:59:59)	81.77	76.29	85.00	53,308	65,196
3 Mid Day(09:00:00-14:59:59)	77.58	76.29	85.00	95,283	122,814
4 PM Peak(15:00:00-17:59:59)	67.80	76.29	85.00	48,638	71,741
5 PM(18:00:00-23:59:59)	77.72	76.29	85.00	45,755	58,868
Beyond defined periods	62.85	76.29	85.00	379	603

### CR-0106 On Time Performance Graph

Shows all Routes together on one chart for easy visual indication of outliers.



Route	% Early	% Late	Timepoints Processed
10 - 10 FSL	3.58	17.66	3,574
20 - 20	0.00	60.92	87
001 - Greenback	1.60	10.50	12,616
002 - Riverside	3.97	10.12	5,010
003 - Riverside Express	1.56	35.58	1,023
005 - Meadowview - Valley Hi via Massi	0.89	14.32	2,032
006 - Land Park	2.76	18.39	4,704
007 - Pocket Express	4.18	36.81	766
011 - Truxel Road	1.29	40.96	5,569
013 - Northgate	2.61	20.12	2,604
015 - Rio Linda Blvd - O St	2.96	24.56	8,401
019 - Rio Linda	4.54	32.49	4,869
021 - Sunrise - Citrus Heights	2.45	20.36	8,615
022 - Arden	5.31	20.47	2,789
023 - El Camino	2.24	18.67	14,084
024 - Madison - Greenback	3.70	15.06	1,999

Route	% Early	% Late	Timepoints Processed
025 - Marconi	3.51	19.11	8,635
026 - Fulton	1.06	28.86	8,970
028 - Fair Oaks - Folsom Blvd	4.52	12.20	3,763
029 - Arden - California Ave	1.07	30.88	748
030 - J Street (DASH)	1.62	14.89	14,327
033 - Dos Rios	1.15	18.53	1,916
034 - McKinley	4.05	14.68	4,020
038 - P/Q Streets	1.29	21.72	5,346
047 - Phoenix Park	3.99	11.11	1,882
051 - Broadway - Stockton	2.99	28.53	22,215
054 - Center Parkway	2.66	25.67	3,798
055 - Scottsdale	1.51	26.47	7,734
056 - Pocket - C.R.C.	2.55	16.21	7,189
061 - Fruitridge	5.64	9.71	4,111
062 - Freeport	4.27	18.97	11,662
065 - Delta Shores - Franklin - 65th S	1.46	39.45	4,243
067 - Franklin	1.30	24.61	12,067
068 - 44th Street	2.35	23.50	12,079
072 - Rosemont - Lincoln Village	2.08	6.30	5,954
074 - International	0.98	2.84	2,461
075 - Mather Field	0.31	3.13	1,599
080 - Watt - Elkhorn	2.06	26.71	6,420
081 - Florin - 65th Street	2.55	19.51	15,619
082 - Howe - 65th Street	4.20	11.32	10,167
084 - Watt - North Highlands	3.57	14.45	5,300
086 - San Juan - Silver Eagle	2.06	13.81	6,128
087 - Howe	0.69	14.70	5,668
088 - West El Camino	1.21	19.39	6,855
093 - Hillsdale	3.77	27.18	8,259
095 - Citrus Heights-Antelope Rd	8.65	19.88	1,283
103 - Auburn Blvd	1.53	20.08	523
109 - Hazel Express	4.48	43.28	670
170 - JIBE EASTSIDE	4.35	32.41	3,332
171 - JIBE WESTSIDE	7.85	15.29	1,491
172 - JIBE CENTRAL	7.39	32.39	2,637
174 - JIBE MIDWEST	3.13	3.13	32
175 - RANCHO CORDOVAN - SUNRIDGE PARK	0.58	31.73	687
176 - RANCHO CORDOVAN - ANATOLIA	2.04	12.87	785
177 - RANCHO CORDOVAN - VILLAGES	0.60	14.90	1,839
051X - W/X	19.29	12.43	4,256
DH063 - DeadHead from BT-21WX	11.29	6.45	62



Route	% Early	% Late	Timepoints Processed
DH064 - DeadHead from BT-24FL	29.89	9.89	455
DH065 - DeadHead from BT-65TH	2.38	57.14	42
DH066 - DeadHead from BT-7&CA	1.79	57.14	56
DH067 - DeadHead from BT-8&F	0.00	81.82	33
DH068 - DeadHead from BT-8&O	1.98	50.50	101
DH069 - DeadHead from BT-9&K	1.09	15.22	92
DH070 - DeadHead from BT-ANRO	0.00	26.32	19
DH071 - DeadHead from BT-ARDN	30.14	1.37	73
DH072 - DeadHead from BT-ARFR	0.00	45.21	73
DH073 - DeadHead from BT-CCNA	15.79	2.63	38
DH074 - DeadHead from BT-CRC	0.00	52.38	21
DH075 - DeadHead from BT-DEMA2	0.00	47.62	42
DH076 - DeadHead from BT-F&7	16.28	10.47	86
DH077 - DeadHead from BT-FLOR	6.82	11.36	44
DH078 - DeadHead from BT-FMEB	8.89	23.33	90
DH079 - DeadHead from BT-I-80	13.82	22.37	152
DH080 - DeadHead from BT-LOOR	0.90	61.26	111
DH081 - DeadHead from BT-POCK	0.00	55.26	38
DH082 - DeadHead from BT-RRWB	3.33	73.33	30
DH083 - DeadHead from BT-SRML	3.30	27.47	91
DH084 - DeadHead from BT-WTNB	13.87	14.19	2,841
DH085 - DeadHead from BT-WTSB	8.14	26.12	1,719
PI020 - Pull-in to BT-CBS	2.45	46.32	326
PI021 - Pull-in to BT-DTG	12.17	17.59	6,697
PI022 - Pull-in to BT-HAZEL	9.38	51.56	64
PO014 - Pull-out from BT-CBS	9.62	5.00	260
PO015 - Pull-out from BT-DTG	15.26	10.52	6,362
PO016 - Pull-out from BT-HAZEL	5.88	2.61	153

## CR-0103 Overall On Time

Overall On Time Timepoints

On Time	Early	Late	Timepoints Processed
76.29%	3.51%	20.20%	325,583