



Ridership Report (October 2019)

Year to Date Summary

Category	FY20 YTD	FY19YTD	Difference	% Change
Bus	3,518,921	3,415,852	103,069	3.0%
Light Rail	3,848,176	3,641,112	207,064	5.7%
System Total	7,367,097	7,056,964	310,133	4.4%

Current Month Summary

Category	October 2019	October 2018	Difference	% Change
Bus	1,059,668	1,014,352	45,316	4.5%
Light Rail	1,063,740	1,025,613	38,127	3.7%
System Total	2,123,408	2,039,965	83,443	4.1%

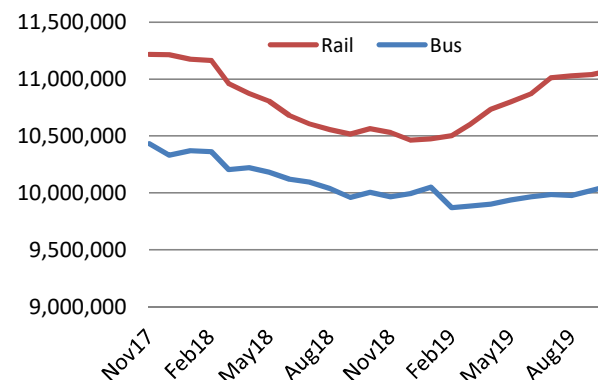
Daily Summary

Category	October 2019	October 2018	Difference	% Change
Bus (M-F)	41,415	40,275	1,140	2.8%
Bus (Sat)	15,390	13,266	2,124	16.0%
Bus (Sun)	10,371	7,915	2,456	31.0%
Light Rail (M-F)	40,939	40,510	429	1.1%
Light Rail (Sat)	17,127	13,500	3,627	26.9%
Light Rail (Sun)	12,229	9,500	2,729	28.7%

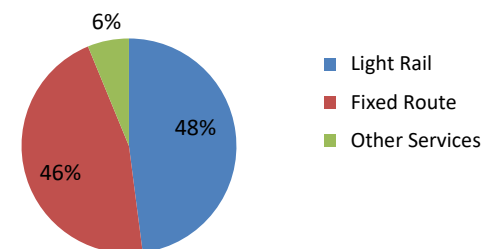
E-Tran Ridership Summary (E-Van included)

Category	Current Year	Prior Year	Difference	% Change
E-Tran (YTD)	280,319	266,440	13,879	5.2%
E-Tran (Monthly)	84,775	81,648	3,127	3.8%
E-Tran (Weekday)	3,560	3,426	134	3.9%

Trailing 12 Month Trend



October Ridership by Mode



Other services include E-Tran, Folsom, Smart Ride, CBS and Special Services

Route Level Ridership Comparison (Bus)

Weedday Route Comparison

Route	Oct 2019	Oct 2018	Difference	% Change
1	2,067	2,190	(124)	-6%
11	972	715	257	36%
13	678	315	362	115%
15	795	1,215	(420)	-35%
19	423	658	(234)	-36%
21	1,239	1,089	150	14%
23	1,814	1,676	138	8%
25	1,298	1,042	257	25%
26	1,596	1,110	487	44%
30	2,061	2,019	42	2%
33	265	248	17	7%
38	761	413	348	84%
51	3,360	3,361	(1)	0%
56	1,115	1,146	(31)	-3%
61	984	569	414	73%
62	1,251	1,215	35	3%
67	1,448	1,183	265	22%
68	2,035	1,219	816	67%
72	1,389	1,127	262	23%
75	467	175	292	167%
81	3,322	2,866	456	16%
82	1,982	2,000	(18)	-1%
84	1,612	838	774	92%
86	1,323	1,231	92	7%
87	1,492	1,350	142	11%
88	838	840	(3)	0%
93	834	854	(20)	-2%
102	292	-	292	
103	216	65	151	233%
105	63	-	63	
106	132	-	132	
107	126	-	126	
109	106	108	(2)	-1%
113	83	-	83	
129	130	-	130	
134	162	-	162	
161	11	-	11	
170	228	188	40	21%
171	89	78	11	14%
172	162	145	17	12%
174	74	47	28	59%
175	42	34	8	24%
176	30	46	(17)	-36%
177	146	113	33	29%
193	79	-	79	
205	49	38	11	30%
206	46	42	4	10%
210	58	47	11	23%
211	126	108	18	16%
212	142	89	53	59%
213	79	62	17	27%
214	52	46	6	12%
226	29	35	(6)	-16%
227	24	18	6	33%
228	42	42	1	2%
246	68	44	25	56%
247	22	16	6	40%
248	51	42	8	20%
252	51	58	(7)	-12%
255	87	62	24	39%
SmaRT Ride	461	388	73	19%
Folsom FR	382	-	382	
Folsom DAR	54	-	54	

Saturday Route Comparison

Route	Oct 2019	Oct 2018	Difference	% Change
1	768	777	(9)	-1%
11	447	282	165	59%
13	426	-	426	
15	381	558	(176)	-32%
19	209	271	(63)	-23%
21	585	497	88	18%
23	1,106	1,169	(63)	-5%
25	579	433	146	34%
26	741	266	475	179%
30	356	486	(131)	-27%
38	280	205	76	37%
51	1,683	1,583	100	6%
56	517	457	60	13%
61	350	-	350	
62	285	309	(24)	-8%
67	285	309	(24)	-8%
68	1,021	568	454	80%
72	284	229	54	24%
75	200	105	96	92%
81	1,264	1,132	132	12%
82	514	516	(2)	0%
84	857	362	495	137%
86	470	370	100	27%
87	586	433	152	35%
88	301	275	26	9%
93	361	280	81	29%

Sunday Route Comparison

Route	Oct 2019	Oct 2018	Difference	% Change
1	566	607	(41)	-7%
11	351	-	351	
13	340	-	340	
15	247	415	(168)	-41%
19	174	209	(34)	-16%
21	388	311	76	24%
23	664	714	(51)	-7%
25	328	-	328	
26	377	189	188	100%
30	250	243	7	3%
38	212	137	75	55%
51	1,286	1,031	255	25%
56	312	277	35	12%
61	259	-	259	
62	161	-	161	
67	518	403	115	29%
68	623	415	207	50%
72	193	168	25	15%
75	142	95	47	50%
81	797	622	175	28%
82	390	411	(21)	-5%
84	540	-	540	
86	314	255	60	23%
87	440	265	175	66%
88	270	203	68	33%
93	231	215	16	7%

Please note:

Only Routes operating post SacRT forward are shown above.

Average Weekday Boardings by Station by Line

Station Name	Oct19	Oct18	Difference	% Change
BLUE LINE - Total	21,722	20,200	1,522	7.53%
12TH & I STATION	507	508	(1)	-0.22%
13TH STREET STATION	588	561	27	4.81%
16TH STREET STATION	1,843	1,744	99	5.68%
47TH AVENUE STATION	646	599	47	7.88%
4TH AVE/WAYNE HULTGREN STATION	769	594	175	29.36%
7TH & CAPITOL STATION	869	784	85	10.86%
8TH & CAPITOL STATION	425	422	3	0.63%
8TH & O STATION	880	829	51	6.16%
ALKALI FLAT/LA VALENTINA STA	752	747	5	0.71%
ARCHIVES PLAZA STATION	561	556	5	0.92%
ARDEN/DEL PASO STATION	882	852	29	3.45%
BROADWAY STATION	745	710	35	4.91%
CATHEDRAL SQUARE STATION	798	844	(46)	-5.46%
CENTER PARKWAY STATION	354	286	68	23.62%
CITY COLLEGE STATION	1,300	990	310	31.26%
CRC STATION	1,625	1,420	205	14.46%
FLORIN STATION	1,068	969	99	10.23%
FRANKLIN STATION	823	761	62	8.13%
FRUITRIDGE STATION	589	488	101	20.79%
GLOBE AVENUE STATION	284	282	3	0.90%
MARCONI/ARCADE STATION	754	758	(4)	-0.56%
MEADOWVIEW STATION	1,030	961	69	7.14%
ROSEVILLE ROAD STATION	705	691	14	1.98%
ROYAL OAKS STATION	410	428	(17)	-4.07%
ST ROSE OF LIMA PARK STATION	668	649	20	3.01%
SWANSTON STATION	267	268	(1)	-0.47%
Watt/I-80 Station	1,370	1,271	98	7.74%
WATT/I-80 WEST STATION	147	148	(1)	-0.59%
GOLD LINE - Total	18,639	19,900	(1,261)	-6.34%
13TH STREET STATION	662	731	(69)	-9.40%
16TH STREET STATION	1,815	1,895	(80)	-4.24%
23RD STREET STATION	489	565	(76)	-13.39%
29TH STREET STATION	1,445	1,597	(152)	-9.51%
39TH STREET STATION	297	308	(12)	-3.79%
48TH STREET STATION	235	258	(22)	-8.61%
59TH STREET STATION	274	287	(14)	-4.80%
7TH & CAPITOL STATION	1,001	1,049	(49)	-4.63%
7TH & I/COUNTY CENTER STATION	374	399	(25)	-6.31%
8TH & CAPITOL STATION	54	63	(9)	-14.29%
8TH & H STATION	77	87	(10)	-11.11%
8TH & K STATION	81	90	(9)	-10.25%
8TH & O STATION	796	843	(47)	-5.56%
ARCHIVES PLAZA STATION	604	682	(78)	-11.41%
BUTTERFIELD STATION	522	596	(75)	-12.51%
COLLEGE GREENS STATION	632	712	(80)	-11.23%
CORDOVA TOWN CENTER STATION	490	522	(32)	-6.09%
GLENN STATION	266	285	(20)	-6.85%
HAZEL STATION	172	187	(14)	-7.72%

HISTORIC FOLSOM STATION	520	545	(26)	-4.76%
IRON POINT STATION	484	503	(19)	-3.84%
MATHER FIELD/MILLS STATION	1,410	1,481	(70)	-4.75%
POWER INN STATION	537	580	(43)	-7.46%
SACRAMENTO VALLEY STATION	469	566	(97)	-17.11%
STARFIRE STATION	321	333	(12)	-3.54%
SUNRISE STATION	864	909	(45)	-5.00%
TIBER STATION	308	319	(12)	-3.64%
UNIVERSITY/65TH STREET STATION	1,571	1,537	34	2.22%
WATT/MANLOVE STATION	1,057	1,110	(53)	-4.76%
ZINFANDEL STATION	797	848	(50)	-5.95%
GREEN LINE - Total	578	410	168	40.98%
13TH STREET STATION	130	95	35	37.23%
7TH & CAPITOL STATION	42	26	16	59.13%
7TH & I/COUNTY CENTER STATION	34	25	9	35.01%
8TH & CAPITOL STATION	29	19	11	58.21%
8TH & K STATION	60	50	10	20.28%
8TH & O STATION	35	23	12	52.66%
ARCHIVES PLAZA STATION	36	26	10	40.66%
TOWNSHIP 9 STATION	211	146	65	44.30%
All Stations	40,939	40,510	429	1.06%

Average Weekday Alightings by Station by Line

Station Name	Oct19	Oct18	Difference	% Change
BLUE LINE - Rt#533	21,072	19,916	1,156	5.81%
12TH & I STATION	529	532	(3)	-0.59%
13TH STREET STATION	604	580	23	4.05%
16TH STREET STATION	1,839	1,774	66	3.72%
47TH AVENUE STATION	644	610	34	5.59%
4TH AVE/WAYNE HULTGREN STATION	633	479	153	31.97%
7TH & CAPITOL STATION	696	685	11	1.61%
8TH & CAPITOL STATION	564	524	40	7.57%
8TH & O STATION	769	752	17	2.22%
ALKALI FLAT/LA VALENTINA STATION	735	739	(3)	-0.41%
ARCHIVES PLAZA STATION	509	509	1	0.12%
ARDEN/DEL PASO STATION	900	885	14	1.63%
BROADWAY STATION	771	728	43	5.93%
CATHEDRAL SQUARE STATION	822	879	(57)	-6.44%
CENTER PARKWAY STATION	304	229	76	33.03%
CITY COLLEGE STATION	1,274	901	373	41.44%
CRC STATION	1,612	1,480	132	8.93%
FLORIN STATION	1,070	967	103	10.61%
FRANKLIN STATION	802	724	78	10.73%
FRUITRIDGE STATION	612	480	132	27.47%
GLOBE AVENUE STATION	284	291	(7)	-2.53%
MARCONI/ARCADE STATION	697	724	(27)	-3.67%
MEADOWVIEW STATION	1,014	945	69	7.33%
ROSEVILLE ROAD STATION	665	699	(34)	-4.91%
ROYAL OAKS STATION	410	428	(18)	-4.11%
ST ROSE OF LIMA PARK STATION	569	544	26	4.69%
SWANSTON STATION	258	273	(16)	-5.70%
Watt/I-80 Station	1,287	1,329	(42)	-3.18%
WATT/I-80 WEST STATION	136	149	(13)	-8.99%
GOLD LINE - Rt#507	19,303	19,993	(690)	-3.45%
13TH STREET STATION	564	608	(43)	-7.15%
16TH STREET STATION	1,906	1,922	(16)	-0.85%
23RD STREET STATION	505	555	(50)	-8.98%
29TH STREET STATION	1,483	1,574	(91)	-5.78%
39TH STREET STATION	301	303	(2)	-0.79%
48TH STREET STATION	268	279	(12)	-4.19%
59TH STREET STATION	294	307	(13)	-4.35%
7TH & CAPITOL STATION	64	66	(2)	-3.65%
7TH & I/COUNTY CENTER STATION	24	29	(6)	-18.93%
8TH & CAPITOL STATION	688	768	(81)	-10.50%
8TH & H STATION	340	389	(49)	-12.57%
8TH & K STATION	706	759	(54)	-7.09%
8TH & O STATION	663	740	(77)	-10.45%
ARCHIVES PLAZA STATION	598	698	(100)	-14.32%
BUTTERFIELD STATION	523	582	(59)	-10.13%
COLLEGE GREENS STATION	633	688	(55)	-7.95%
CORDOVA TOWN CENTER STATION	480	489	(9)	-1.87%
GLENN STATION	259	273	(14)	-5.12%

HAZEL STATION	169	181	(12)	-6.66%
HISTORIC FOLSOM STATION	524	543	(19)	-3.48%
IRON POINT STATION	487	488	(1)	-0.26%
MATHER FIELD/MILLS STATION	1,412	1,420	(8)	-0.56%
POWER INN STATION	567	574	(7)	-1.30%
SACRAMENTO VALLEY STATION	435	490	(55)	-11.24%
SACRAMENTO VALLEY STATION	352	269	83	30.91%
STARFIRE STATION	296	296	1	0.32%
SUNRISE STATION	847	882	(35)	-3.96%
TIBER STATION	307	308	(1)	-0.18%
UNIVERSITY/65TH STREET STATION	1,663	1,541	121	7.88%
WATT/MANLOVE STATION	1,107	1,103	4	0.38%
ZINFANDEL STATION	835	863	(28)	-3.26%
GREEN LINE - Rt#519	564	601	(37)	-6.18%
13TH STREET STATION	176	193	(17)	-8.85%
7TH & CAPITOL STATION	60	48	12	23.90%
7TH & I/COUNTY CENTER STATIO	61	67	(5)	-7.95%
8TH & CAPITOL STATION	8	12	(4)	-33.25%
8TH & K STATION	20	36	(16)	-45.25%
8TH & O STATION	28	29	(2)	-5.90%
ARCHIVES PLAZA STATION	24	31	(7)	-22.73%
TOWNSHIP 9 STATION	187	184	3	1.49%
All Stations	40,939	40,510	429	1.06%

Average Saturday Boardings by Station by Line

Station Name	Oct19	Oct18	Difference	% Change
BLUE LINE - Rt#533	8,635	6,700	1,935	28.88%
12TH & I STATION	157	136	21	15.38%
13TH STREET STATION	207	170	37	21.54%
16TH STREET STATION	775	612	164	26.78%
47TH AVENUE STATION	217	167	51	30.35%
4TH AVE/WAYNE HULTGREN STATION	162	121	41	33.45%
7TH & CAPITOL STATION	407	289	117	40.47%
8TH & CAPITOL STATION	88	73	15	20.40%
8TH & O STATION	135	94	41	43.54%
ALKALI FLAT/LA VALENTINA STATION	412	330	82	24.89%
ARCHIVES PLAZA STATION	84	68	16	24.40%
ARDEN/DEL PASO STATION	509	400	109	27.33%
BROADWAY STATION	396	312	84	26.86%
CATHEDRAL SQUARE STATION	365	293	72	24.43%
CENTER PARKWAY STATION	143	116	27	22.80%
CITY COLLEGE STATION	293	190	103	54.50%
CRC STATION	604	453	150	33.15%
FLORIN STATION	480	368	112	30.58%
FRANKLIN STATION	258	168	90	53.90%
FRUITRIDGE STATION	270	188	82	43.58%
GLOBE AVENUE STATION	127	105	22	21.03%
MARCONI/ARCADE STATION	368	312	56	17.77%
MEADOWVIEW STATION	437	347	90	25.95%
ROSEVILLE ROAD STATION	116	92	24	26.49%
ROYAL OAKS STATION	266	233	33	14.08%
ST ROSE OF LIMA PARK STATION	391	312	78	25.09%
SWANSTON STATION	121	101	20	19.80%
Watt/I-80 Station	778	585	192	32.83%
WATT/I-80 WEST STATION	21	20	1	4.39%
GOLD LINE - Rt#507	8,492	6,800	1,692	24.88%
13TH STREET STATION	247	199	48	23.93%
16TH STREET STATION	784	651	132	20.32%
23RD STREET STATION	187	163	24	14.44%
29TH STREET STATION	715	495	219	44.28%
39TH STREET STATION	133	108	25	23.40%
48TH STREET STATION	94	91	3	3.39%
59TH STREET STATION	112	100	12	11.52%
7TH & CAPITOL STATION	477	325	152	46.78%
7TH & I/COUNTY CENTER STATION	129	102	27	26.57%
8TH & CAPITOL STATION	31	27	4	15.13%
8TH & H STATION	35	27	8	28.21%
8TH & K STATION	61	54	6	11.99%
8TH & O STATION	149	109	40	36.19%
ARCHIVES PLAZA STATION	98	88	10	11.86%
BUTTERFIELD STATION	164	137	27	19.57%
COLLEGE GREENS STATION	462	397	65	16.41%
CORDOVA TOWN CENTER STATION	240	198	41	20.84%
GLENN STATION	61	55	6	10.53%

HAZEL STATION	65	66	(1)	-1.19%
HISTORIC FOLSOM STATION	286	237	49	20.75%
IRON POINT STATION	202	187	15	8.07%
MATHER FIELD/MILLS STATION	745	596	148	24.90%
POWER INN STATION	303	182	121	66.30%
SACRAMENTO VALLEY STATION	372	279	93	33.18%
ST ROSE OF LIMA PARK STATION	3	4	(2)	-38.67%
STARFIRE STATION	201	159	42	26.58%
SUNRISE STATION	357	321	36	11.34%
TIBER STATION	141	127	13	10.47%
UNIVERSITY/65TH STREET STATION	675	485	190	39.24%
WATT/MANLOVE STATION	413	344	69	20.10%
ZINFANDEL STATION	551	483	68	13.98%
Final Total - Boardings	17,127	13,500	3,627	26.87%

Average Saturday Alightings by Station by Line

Station Name	Oct19	Oct18	Difference	% Change
BLUE LINE - Rt#533	8,592	6,775	1,817	26.82%
12TH & I STATION	166	132	34	25.95%
13TH STREET STATION	215	177	38	21.67%
16TH STREET STATION	808	667	141	21.17%
47TH AVENUE STATION	197	170	27	15.71%
4TH AVE/WAYNE HULTGREN STATION	150	119	30	25.41%
7TH & CAPITOL STATION	293	216	76	35.30%
8TH & CAPITOL STATION	168	111	58	52.07%
8TH & O STATION	132	91	41	45.60%
ALKALI FLAT/LA VALENTINA STATION	405	332	73	21.89%
ARCHIVES PLAZA STATION	91	54	37	68.45%
ARDEN/DEL PASO STATION	544	412	131	31.86%
BROADWAY STATION	434	340	94	27.59%
CATHEDRAL SQUARE STATION	386	327	60	18.24%
CENTER PARKWAY STATION	126	105	22	20.64%
CITY COLLEGE STATION	283	172	111	64.63%
CRC STATION	640	482	158	32.81%
FLORIN STATION	491	387	104	26.76%
FRANKLIN STATION	222	142	80	56.61%
FRUITRIDGE STATION	255	177	78	43.75%
GLOBE AVENUE STATION	124	112	13	11.24%
MARCONI/ARCADE STATION	333	309	24	7.78%
MEADOWVIEW STATION	438	348	90	25.89%
ROSEVILLE ROAD STATION	127	103	24	23.78%
ROYAL OAKS STATION	278	262	16	6.07%
ST ROSE OF LIMA PARK STATION	332	246	86	34.72%
SWANSTON STATION	116	91	26	28.25%
Watt/I-80 Station	774	635	139	21.90%
WATT/I-80 WEST STATION	20	16	4	23.97%
GOLD LINE - Rt#507	8,535	6,725	1,810	26.92%
13TH STREET STATION	215	177	38	21.49%
16TH STREET STATION	805	688	117	17.01%

23RD STREET STATION	207	163	44	27.05%
29TH STREET STATION	724	442	281	63.60%
39TH STREET STATION	124	90	34	37.74%
48TH STREET STATION	101	94	7	7.16%
59TH STREET STATION	114	84	30	35.67%
7TH & CAPITOL STATION	48	26	21	79.97%
7TH & I/COUNTY CENTER STATION	14	17	(3)	-19.59%
8TH & CAPITOL STATION	200	159	41	25.61%
8TH & H STATION	80	75	5	7.00%
8TH & K STATION	527	355	172	48.38%
8TH & O STATION	122	89	33	37.48%
ARCHIVES PLAZA STATION	100	89	11	12.38%
BUTTERFIELD STATION	156	133	23	17.54%
COLLEGE GREENS STATION	443	380	64	16.84%
CORDOVA TOWN CENTER STATION	246	200	47	23.36%
GLENN STATION	54	45	9	21.06%
HAZEL STATION	57	61	(5)	-7.46%
HISTORIC FOLSOM STATION	292	253	39	15.46%
IRON POINT STATION	222	188	34	17.83%
MATHER FIELD/MILLS STATION	712	604	108	17.93%
POWER INN STATION	325	156	169	108.54%
SACRAMENTO VALLEY STATIO	338	276	61	22.13%
SACRAMENTO VALLEY STATION	8	4	4	116.00%
ST ROSE OF LIMA PARK STATION	1	0	1	160.58%
STARFIRE STATION	193	155	38	24.46%
SUNRISE STATION	381	328	52	15.96%
TIBER STATION	121	114	7	6.02%
UNIVERSITY/65TH STREET STATION	636	474	162	34.23%
WATT/MANLOVE STATION	374	318	56	17.61%
ZINFANDEL STATION	596	487	109	22.37%
Final Total - Alightings	17,127	13,500	3,627	26.87%

Average Sunday Boardings by Station by Line

Station Name	Oct19	Oct18	Difference	% Change
BLUE LINE - Rt#533	6,170	4,700	1,470	31.28%
12TH & I STATION	138	102	36	35.75%
13TH STREET STATION	152	119	33	27.59%
16TH STREET STATION	513	430	83	19.39%
47TH AVENUE STATION	156	126	30	23.84%
4TH AVE/WAYNE HULTGREN STATION	91	81	10	11.79%
7TH & CAPITOL STATION	279	201	78	38.95%
8TH & CAPITOL STATION	78	52	26	50.33%
8TH & O STATION	94	71	24	33.62%
ALKALI FLAT/LA VALENTINA STATION	293	237	56	23.69%
ARCHIVES PLAZA STATION	58	42	17	39.90%
ARDEN/DEL PASO STATION	384	277	107	38.64%
BROADWAY STATION	298	220	78	35.54%
CATHEDRAL SQUARE STATION	285	221	64	29.02%
CENTER PARKWAY STATION	92	80	12	14.98%
CITY COLLEGE STATION	145	111	34	30.44%
CRC STATION	399	299	100	33.48%
FLORIN STATION	365	276	89	32.33%
FRANKLIN STATION	199	136	63	46.56%
FRUITRIDGE STATION	185	134	51	38.23%
GLOBE AVENUE STATION	123	84	38	45.56%
MARCONI/ARCADE STATION	229	177	52	29.06%
MEADOWVIEW STATION	303	241	62	25.88%
ROSEVILLE ROAD STATION	108	75	34	45.32%
ROYAL OAKS STATION	230	180	50	27.95%
ST ROSE OF LIMA PARK STATION	308	222	86	38.54%
SWANSTON STATION	94	64	30	46.81%
Watt/I-80 Station	512	398	114	28.62%
WATT/I-80 WEST STATION	19	14	5	38.23%
GOLD LINE - Rt#507	6,059	4,800	1,259	26.23%
13TH STREET STATION	206	152	54	35.61%
16TH STREET STATION	541	449	92	20.53%
23RD STREET STATION	130	109	22	20.20%
29TH STREET STATION	429	336	93	27.80%
39TH STREET STATION	74	75	(1)	-1.60%
48TH STREET STATION	72	59	13	21.13%
59TH STREET STATION	63	64	(1)	-1.01%
7TH & CAPITOL STATION	296	227	69	30.18%
7TH & I/COUNTY CENTER STATION	101	77	23	30.20%
8TH & CAPITOL STATION	17	19	(3)	-14.32%
8TH & H STATION	37	23	14	61.66%
8TH & K STATION	38	36	2	6.07%
8TH & O STATION	95	81	14	17.39%
ARCHIVES PLAZA STATION	61	58	4	6.31%
BUTTERFIELD STATION	134	100	34	33.57%
COLLEGE GREENS STATION	366	281	85	30.13%
CORDOVA TOWN CENTER STATION	182	146	36	24.73%
GLENN STATION	37	33	3	10.45%

HAZEL STATION	49	46	3	6.56%
HISTORIC FOLSOM STATION	175	159	16	10.22%
IRON POINT STATION	164	126	38	30.62%
MATHER FIELD/MILLS STATION	560	427	133	31.13%
POWER INN STATION	127	119	8	7.12%
SACRAMENTO VALLEY STATION	284	216	68	31.74%
STARFIRE STATION	167	118	49	41.19%
SUNRISE STATION	284	239	46	19.14%
TIBER STATION	110	86	24	27.55%
UNIVERSITY/65TH STREET STATION	501	357	144	40.31%
WATT/MANLOVE STATION	315	235	80	34.16%
ZINFANDEL STATION	446	348	98	28.24%
Final Total - Boardings	12,229	9,500	2,729	28.73%

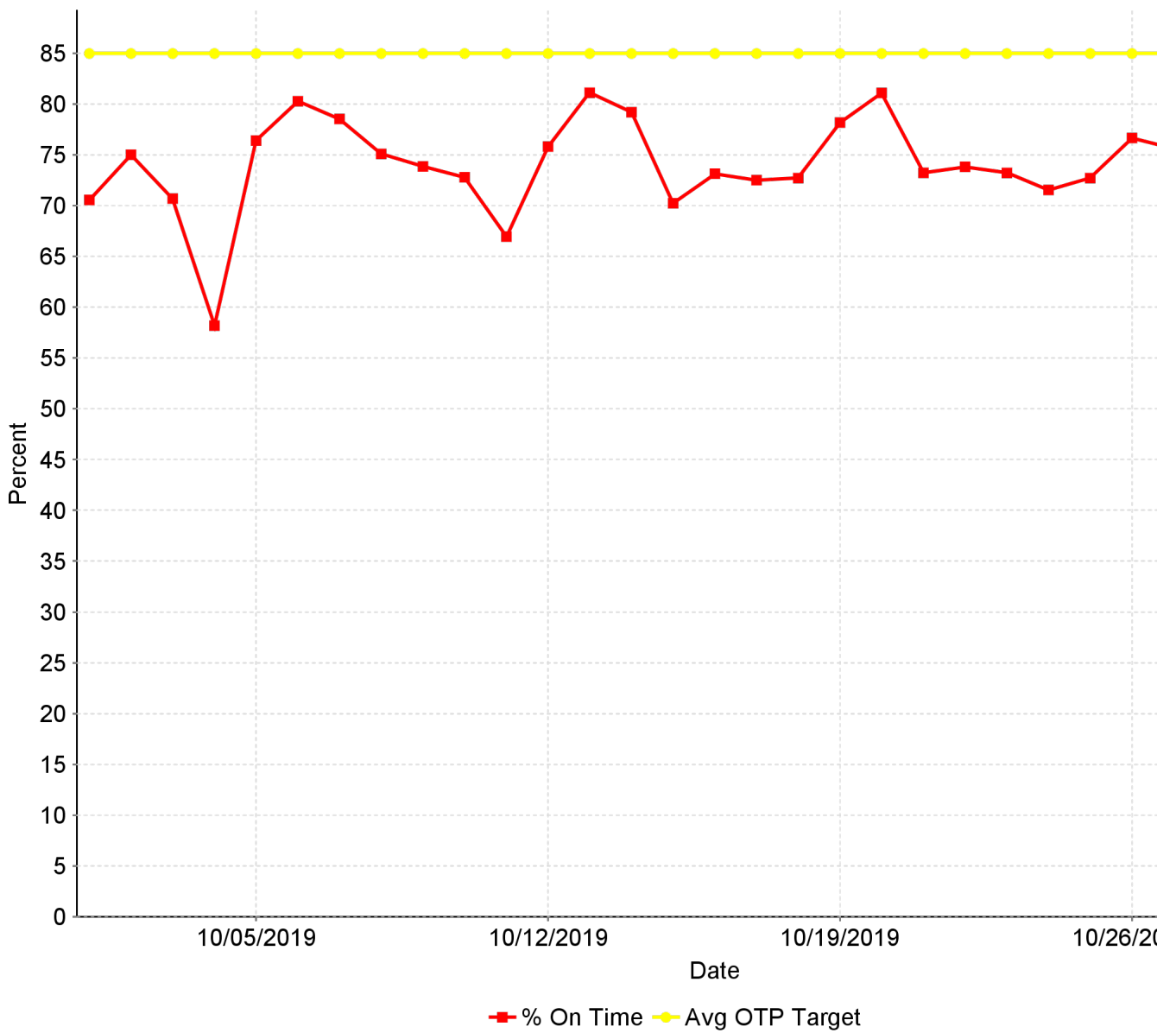
Average Sunday Alightings by Station by Line

Station Name	Oct19	Oct18	Difference	% Change
BLUE LINE - Rt#533	6,170	4,760	1,410	29.63%
12TH & I STATION	138	92	46	49.77%
13TH STREET STATION	152	129	23	18.11%
16TH STREET STATION	513	479	34	7.02%
47TH AVENUE STATION	156	127	28	22.25%
4TH AVE/WAYNE HULTGREN STATION	91	78	12	15.91%
7TH & CAPITOL STATION	279	157	122	77.47%
8TH & CAPITOL STATION	78	81	(3)	-3.85%
8TH & O STATION	94	64	31	47.94%
ALKALI FLAT/LA VALENTINA STATION	293	252	41	16.35%
ARCHIVES PLAZA STATION	58	39	19	49.23%
ARDEN/DEL PASO STATION	384	276	108	39.03%
BROADWAY STATION	298	240	58	24.39%
CATHEDRAL SQUARE STATION	285	222	63	28.18%
CENTER PARKWAY STATION	92	72	20	28.44%
CITY COLLEGE STATION	145	114	31	27.36%
CRC STATION	399	316	83	26.29%
EMPLOYEE PLATFORM STATION	40	28	12	40.62%
FLORIN STATION	365	290	75	25.92%
FRANKLIN STATION	199	115	84	73.25%
FRUITRIDGE STATION	185	134	51	38.47%
GLOBE AVENUE STATION	123	76	47	62.17%
MARCONI/ARCADE STATION	229	181	48	26.67%
MEADOWVIEW STATION	303	241	62	25.59%
ROSEVILLE ROAD STATION	108	72	36	49.39%
ROYAL OAKS STATION	230	197	33	16.57%
ST ROSE OF LIMA PARK STATION	308	167	141	83.98%
SWANSTON STATION	94	68	26	38.53%
Watt/I-80 Station	512	442	69	15.65%
WATT/I-80 WEST STATION	19	9	10	109.16%
GOLD LINE - Rt#507	6,059	4,740	1,319	27.82%
13TH STREET STATION	206	125	81	64.37%
16TH STREET STATION	541	466	75	16.08%

23RD STREET STATION	130	115	16	13.75%
29TH STREET STATION	429	313	116	36.99%
39TH STREET STATION	74	80	(6)	-7.13%
48TH STREET STATION	72	63	9	14.41%
59TH STREET STATION	63	61	2	3.41%
7TH & CAPITOL STATION	296	22	274	1250.98%
7TH & I/COUNTY CENTER STATION	101	12	89	735.87%
8TH & CAPITOL STATION	17	113	(96)	-85.27%
8TH & H STATION	37	50	(13)	-26.50%
8TH & K STATION	38	255	(217)	-85.14%
8TH & O STATION	95	69	26	37.63%
ARCHIVES PLAZA STATION	61	63	(2)	-2.86%
BUTTERFIELD STATION	134	96	38	40.00%
COLLEGE GREENS STATION	366	273	93	33.91%
CORDOVA TOWN CENTER STATION	182	134	48	36.11%
GLENN STATION	37	26	10	39.62%
HAZEL STATION	49	45	4	9.62%
HISTORIC FOLSOM STATION	175	160	15	9.26%
IRON POINT STATION	164	122	42	34.15%
MATHER FIELD/MILLS STATION	560	403	156	38.74%
POWER INN STATION	127	118	9	7.39%
SACRAMENTO VALLEY STATIO	-	197	(197)	-100.00%
SACRAMENTO VALLEY STATION	284	1	283	21392.40%
ST ROSE OF LIMA PARK STATION	0	1	(0)	-64.49%
STARFIRE STATION	167	105	62	58.95%
SUNRISE STATION	284	263	22	8.19%
TIBER STATION	110	74	36	49.22%
UNIVERSITY/65TH STREET STATION	501	335	166	49.61%
WATT/MANLOVE STATION	315	228	87	38.22%
ZINFANDEL STATION	446	353	93	26.29%
Final Total - Alightings	12,229	9,500	2,729	28.73%

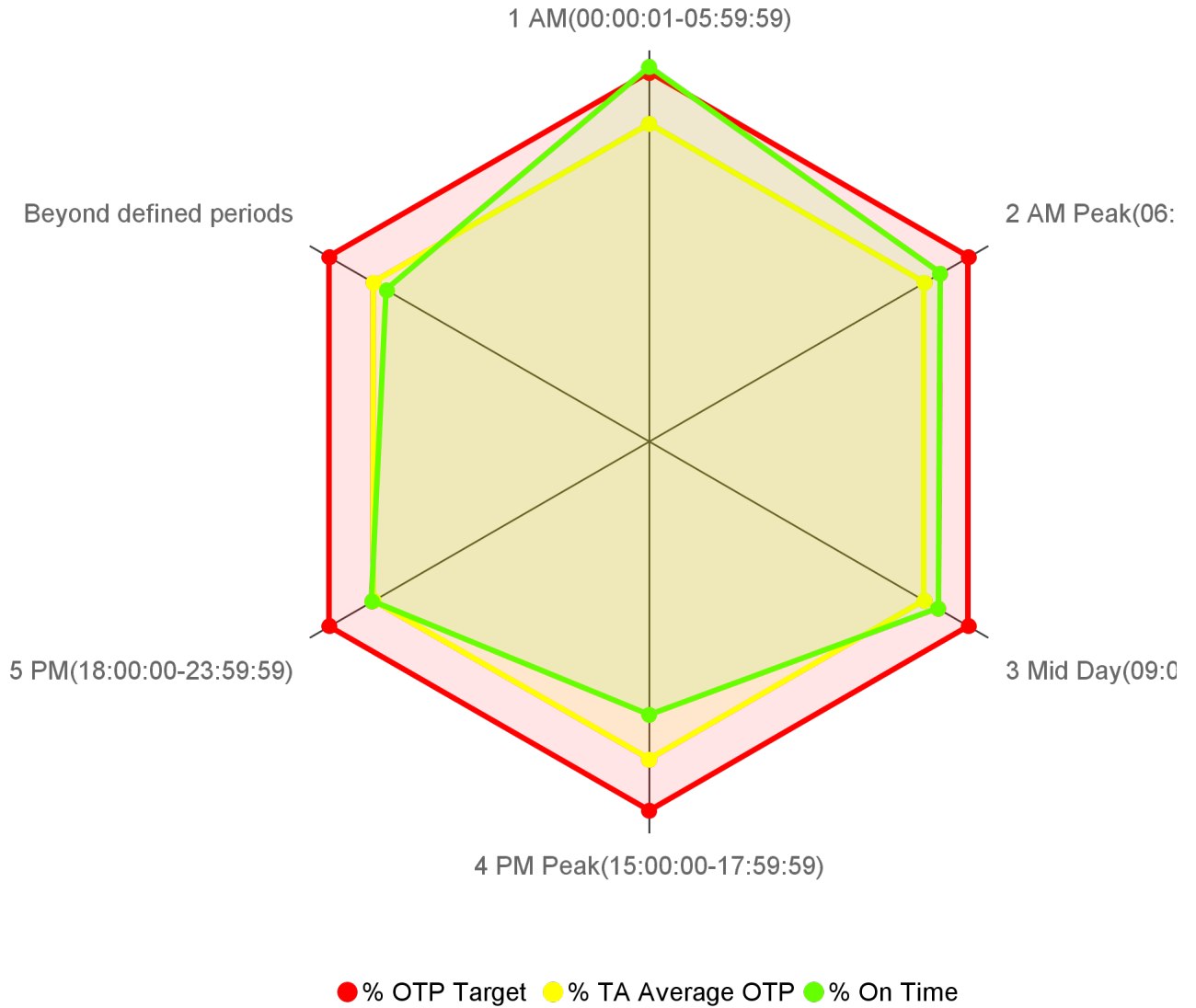
CR-0105 On Time Performance KPI Trend

On Time Performance



CR-0104 On Time Performance by Operational Period

On Time Performance by Operational Period

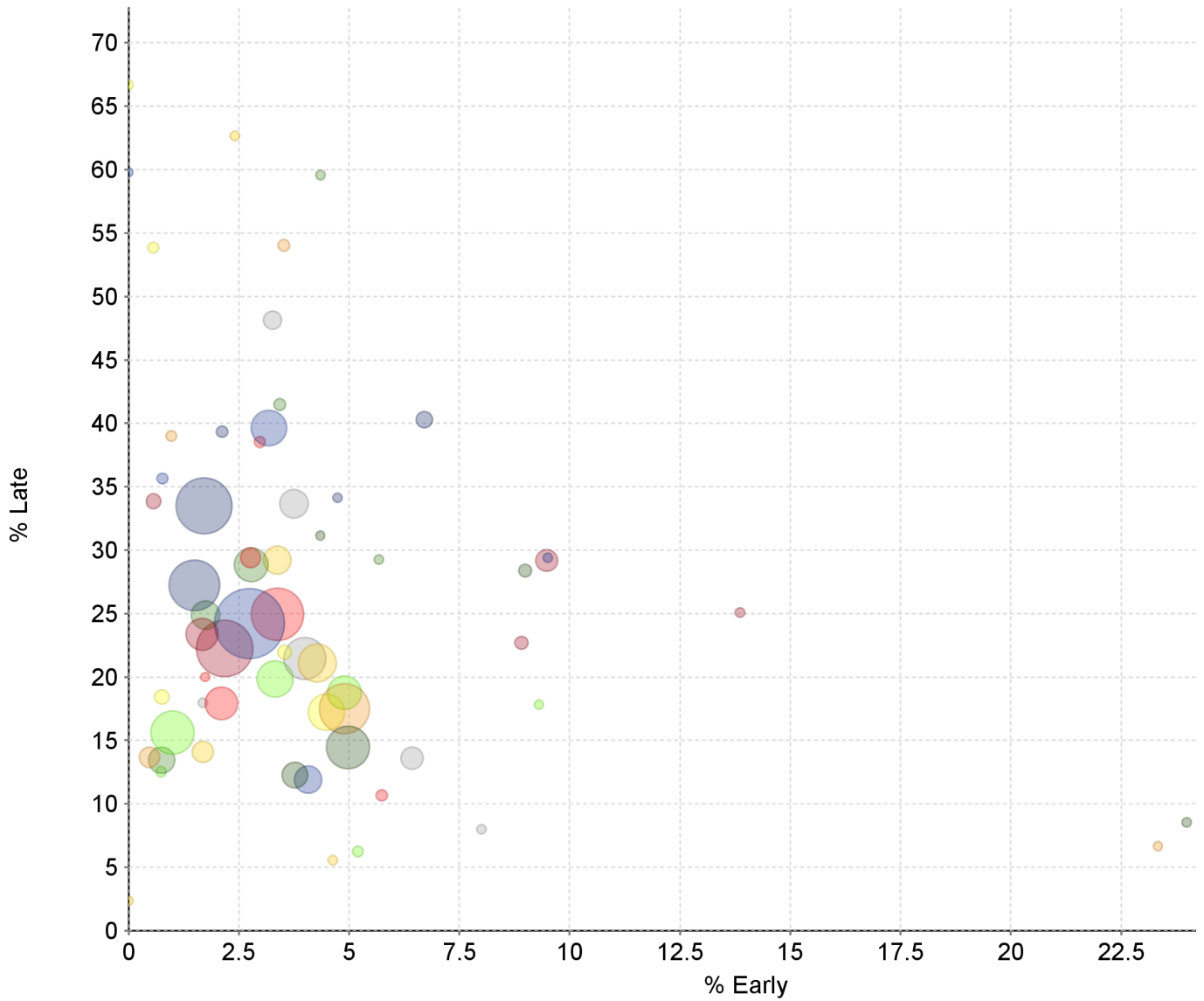


Transit Domain: Bus

Operational Period	% On Time	% TA Average OTP	% OTP Target	# On Time	# Processed
1 AM(00:00:01-05:59:59)	86.35	73.26	85.00	2,746	3,180
2 AM Peak(06:00:00-08:59:59)	77.41	73.26	85.00	46,964	60,670
3 Mid Day(09:00:00-14:59:59)	76.89	73.26	85.00	86,674	112,722
4 PM Peak(15:00:00-17:59:59)	62.87	73.26	85.00	44,018	70,010
5 PM(18:00:00-23:59:59)	73.69	73.26	85.00	46,990	63,769
Beyond defined periods	69.71	73.26	85.00	488	700

CR-0106 On Time Performance Graph

Shows all Routes together on one chart for easy visual indication of outliers.



Route	% Early	% Late	Timepoints Processed
10 - 10 FSL	2.76	29.40	4,126
20 - 20	0.00	66.67	165
001 - GREENBACK	1.00	15.61	12,745
011 - NATOMAS/LAND PARK	3.18	39.63	9,864
013 - NATOMAS/ARDEN	2.78	28.84	9,249
015 - DEL PASO HEIGHTS	1.69	14.09	4,621
019 - RIO LINDA	6.43	13.61	5,011
021 - SUNRISE	1.67	23.37	8,584
023 - EL CAMINO	1.50	27.23	15,569
025 - MARCONI	4.98	14.45	12,698
026 - FULTON	4.90	17.50	15,254
030 - J STREET	2.10	17.93	8,891
033 - DOS RIOS	3.54	21.95	1,781
038 - TAHOE PARK	4.89	18.76	9,217
051 - STOCKTON/BROADWAY	2.75	24.22	22,722
056 - MEADOWVIEW	1.74	24.88	7,282

Route	% Early	% Late	Timepoints Processed
061 - FRUITRIDGE	4.28	21.10	10,731
062 - FREEPORT	4.00	21.46	12,432
067 - FRANKLIN	2.18	22.24	17,801
068 - OAK PARK	1.72	33.50	17,536
072 - ROSEMONT	3.77	12.28	6,336
075 - MATHER	0.47	13.67	4,213
081 - FLORIN	3.38	24.94	16,217
082 - NORTHROP/MORSE	4.48	17.22	10,257
084 - WATT	3.33	19.86	10,135
086 - GRAND	4.07	11.91	6,903
087 - HOWE	0.75	13.45	6,535
088 - WEST EL CAMINO	3.37	29.21	7,031
093 - HILLSDALE	3.75	33.66	7,276
102 - RIVERSIDE COMMUTER	0.57	33.86	2,295
103 - RIVERSIDE EXPRESS	2.12	39.34	1,037
105 - ELSIE	4.35	31.16	138
106 - LAND PARK COMMUTER	3.52	54.03	1,079
107 - SOUTH LAND PARK EXPRESS	2.97	38.54	807
109 - HAZEL EXPRESS	0.56	53.86	713
113 - NORTH MARKET COMMUTER	5.20	6.24	577
129 - ARDEN COMMUTER	0.77	35.64	780
134 - MCKINLEY COMMUTER	3.43	41.47	1,167
161 - BELVEDERE	0.00	2.35	85
170 - JIBE EASTSIDE	3.26	48.14	3,523
171 - JIBE WESTSIDE	8.91	22.70	1,639
172 - JIBE CENTRAL	6.71	40.28	2,907
174 - JIBE MIDWEST	8.99	28.38	1,501
175 - RANCHO CORDOVAN - SUNRIDGE PARK	0.97	39.00	723
176 - RANCHO CORDOVAN - ANATOLIA	5.74	10.68	871
177 - RANCHO CORDOVAN - VILLAGES	0.75	18.43	1,991
193 - AUBURN COMMUTER	0.74	12.55	542
205 - Fruitridge Road - Freeport	9.50	29.41	221
206 - 12TH AVE - SUTTERVILLE RD	5.68	29.26	229
210 - LA RIVERA DR	4.63	5.56	108
211 - COLLEGE GREENS	1.69	17.98	178
212 - 14TH AVE - 21ST AVE	13.86	25.08	303
213 - FRUITRIDGE RD - STOCKTON BLVD	4.74	34.12	211
214 - BROADWAY - STOCKTON BLVD	23.98	8.54	246
226 - POCKET RD - RIVERSIDE BLVD	23.33	6.67	90
227 - SOUTH LAND PARK - GREENHAVEN DR	1.74	20.00	115
228 - GLORIA DR - RUSH RIVER DR	25.86	12.93	116

Route	% Early	% Late	Timepoints Processed
246 - MEADOWVIEW - GREENHAVEN	9.30	17.83	129
247 - 21ST ST - FLORIN RD	0.00	59.78	92
248 - MEADOWVIEW - RUSH RIVER	4.35	59.57	230
252 - FREEPORT - FRUITRIDGE - ML KING	2.41	62.65	249
255 - LA RIVIERA - COLLEGE GREENS	8.00	8.00	125
051X - W/X	9.48	29.18	4,852

CR-0103 Overall On Time

Overall On Time Timepoints

On Time	Early	Late	Timepoints Processed
73.26%	3.23%	23.50%	311,051