



Ridership Report (November 2019)

Year to Date Summary

Category	FY20 YTD	FY19YTD	Difference	% Change
Bus	4,416,355	4,219,231	197,124	4.7%
Light Rail	4,748,491	4,474,545	273,946	6.1%
System Total	9,164,846	8,693,776	471,070	5.4%

Current Month Summary

Category	November 2019	November 2018	Difference	% Change
Bus	897,434	803,379	94,055	11.7%
Light Rail	900,315	833,433	66,882	8.0%
System Total	1,797,749	1,636,812	160,937	9.8%

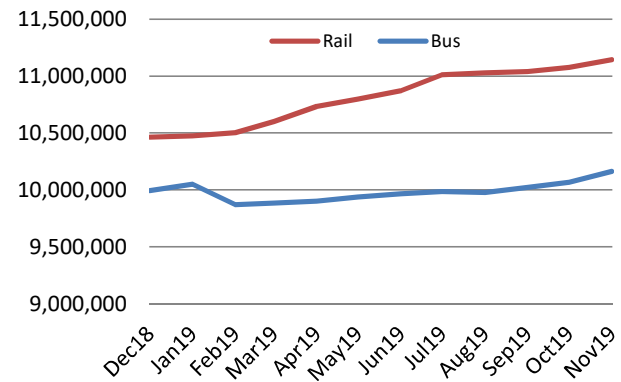
Daily Summary

Category	November 2019	November 2018	Difference	% Change
Bus (M-F)	38,309	33,991	4,318	12.7%
Bus (Sat)	15,491	12,482	3,009	24.1%
Bus (Sun)	10,090	7,320	2,770	37.8%
Light Rail (M-F)	38,035	34,690	3,345	9.6%
Light Rail (Sat)	16,190	13,800	2,390	17.3%
Light Rail (Sun)	11,055	9,600	1,455	15.2%

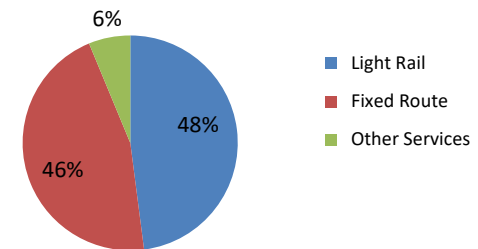
E-Tran Ridership Summary (E-Van included)

Category	Current Year	Prior Year	Difference	% Change
E-Tran (YTD)	340,352	325,491	14,861	4.6%
E-Tran (Monthly)	61,517	59,051	2,466	4.2%
E-Tran (Weekday)	2,946	2,692	255	9.5%

Trailing 12 Month Trend



November Ridership by Mode



Other services include E-Tran, Folsom, Smart Ride, CBS and Special Services

Do Not Print

	July	August	September	October	November	December	January	February
FY20	1,648,944	3,401,746	5,243,689	7,367,097	9,153,977	10,838,741	12,632,958	14,329,308
FY19	1,487,515	3,230,729	5,016,999	7,056,964	8,693,776	10,293,841	11,997,857	13,608,927
	10.85%	5.29%	4.52%	4.39%	5.29%	5.29%	5.29%	5.29%
	July	August	September	October	November	December	January	February
Light Rail	911,359	945,904	924,186	1,059,021	896,925			
Fixed Route	695,888	765,645	878,412	1,011,117	857,085			
Other Services	97,602	106,663	113,574	138,045	105,256			
Monthly Total	1,704,849	1,818,212	1,916,172	2,208,183	1,859,266			
CBS	21,799	23,923	17,487	23,838	20,300			
SmaRT Ride	8,679	9,313	9,294	10,607	9,214			
Folsom (FR & DAR)	6,173	5,886	9,169	10,017	7,477			
Special Service	5,046	2,131	3,395	8,808	6,748			
Etran Service	55,905	65,410	74,229	84,775	61,517			

March	April	May	June
16,260,413	18,217,484	20,200,818	21,940,454
15,442,948	17,301,631	19,185,256	20,837,435
5.29%	5.29%	5.29%	5.29%

March	April	May	June
-------	-------	-----	------

Route Level Ridership Comparison (Bus)

Weekday Route Comparison

Route	Nov 2019	Nov 2018	Difference	% Change
1	1,832	1,708	124	7%
11	933	588	345	59%
13	685	263	422	160%
15	753	1,054	(301)	-29%
19	388	564	(176)	-31%
21	1,223	967	256	26%
23	1,745	1,526	219	14%
25	1,213	938	275	29%
26	1,510	953	557	58%
30	1,989	1,658	331	20%
33	235	226	9	4%
38	675	356	319	90%
51	3,125	2,981	144	5%
56	999	954	45	5%
61	962	460	502	109%
62	1,084	947	137	15%
67	1,385	1,093	292	27%
68	1,903	1,101	802	73%
72	1,235	943	292	31%
75	418	157	261	166%
81	3,017	2,382	635	27%
82	1,779	1,465	314	21%
84	1,520	737	783	106%
86	1,233	1,044	189	18%
87	1,349	1,022	327	32%
88	777	738	39	5%
93	791	737	54	7%
102	243	-	243	
103	197	54	143	262%
105	53	-	53	
106	114	-	114	
107	125	-	125	
109	92	93	(1)	-1%
113	73	-	73	
129	110	-	110	
134	124	-	124	
161	10	-	10	
170	219	186	33	18%
171	98	70	28	40%
172	183	133	50	37%
174	72	42	30	72%
175	29	27	2	6%
176	29	41	(12)	-29%
177	150	101	49	49%
193	68	-	68	
205	37	27	10	38%
206	38	24	14	56%
210	50	37	13	36%
211	99	85	14	16%
212	80	65	15	22%
213	63	22	41	183%
214	40	37	3	9%
226	21	28	(7)	-26%
227	23	-	23	#DIV/0!
228	33	25	8	31%
246	58	38	20	52%
247	21	12	9	69%
248	43	28	15	56%
252	44	15	29	186%
255	77	56	21	39%
SmaRT Ride	461	344	117	34%
Folsom FR	323	-	323	
Folsom DAR	50	-	50	

Saturday Route Comparison

Route	Nov 2019	Nov 2018	Difference	% Change
1	805	724	81	11%
11	466	273	192	70%
13	471	-	471	
15	396	487	(90)	-19%
19	191	278	(87)	-31%
21	567	511	57	11%
23	1,104	1,133	(29)	-3%
25	591	414	177	43%
26	746	256	489	191%
30	353	447	(94)	-21%
38	267	172	94	55%
51	1,724	1,478	246	17%
56	499	505	(6)	-1%
61	360	-	360	
62	268	315	(48)	-15%
67	268	315	(48)	-15%
68	1,061	524	537	103%
72	289	233	56	24%
75	186	93	93	100%
81	1,213	1,096	117	11%
82	516	467	49	10%
84	896	321	575	179%
86	492	391	101	26%
87	569	370	199	54%
88	294	250	45	18%
93	361	318	43	13%

Sunday Route Comparison

Route	Nov 2019	Nov 2018	Difference	% Change
1	528	529	(1)	0%
11	298	-	298	
13	312	-	312	
15	260	424	(164)	-39%
19	163	225	(62)	-28%
21	357	295	62	21%
23	688	608	80	13%
25	342	-	342	
26	350	173	177	102%
30	235	254	(19)	-8%
38	200	136	64	47%
51	1,180	980	200	20%
56	311	295	16	5%
61	267	-	267	
62	153	-	153	
67	505	396	109	27%
68	614	408	206	51%
72	200	137	63	46%
75	147	98	49	50%
81	792	559	233	42%
82	410	350	59	17%
84	525	-	525	
86	343	257	86	34%
87	414	229	185	81%
88	242	189	52	28%
93	254	201	53	27%

Please note:

Only Routes operating post SacRT forward are shown above.

Average Weekday Boardings by Station by Line

Station Name	Nov19	Nov18	Difference	% Change
BLUE LINE - Total	19,821	17,900	1,921	10.73%
12TH & I STATION	463	450	13	2.83%
13TH STREET STATION	545	497	48	9.65%
16TH STREET STATION	1,687	1,545	141	9.15%
47TH AVENUE STATION	580	531	49	9.18%
4TH AVE/WAYNE HULTGREN STATION	645	527	118	22.39%
7TH & CAPITOL STATION	783	694	89	12.80%
8TH & CAPITOL STATION	408	374	34	9.00%
8TH & O STATION	779	734	45	6.12%
ALKALI FLAT/LA VALENTINA STA	727	662	65	9.88%
ARCHIVES PLAZA STATION	496	492	4	0.74%
ARDEN/DEL PASO STATION	864	755	109	14.40%
BROADWAY STATION	744	629	115	18.21%
CATHEDRAL SQUARE STATION	760	748	12	1.59%
CENTER PARKWAY STATION	312	254	58	23.05%
CITY COLLEGE STATION	1,043	878	165	18.86%
CRC STATION	1,435	1,258	177	14.09%
FLORIN STATION	955	859	96	11.19%
FRANKLIN STATION	760	674	86	12.76%
FRUITRIDGE STATION	553	432	121	27.93%
GLOBE AVENUE STATION	243	250	(6)	-2.41%
MARCONI/ARCADE STATION	682	672	10	1.52%
MEADOWVIEW STATION	935	852	83	9.73%
ROSEVILLE ROAD STATION	657	612	45	7.32%
ROYAL OAKS STATION	390	379	11	2.92%
ST ROSE OF LIMA PARK STATION	633	575	58	10.13%
SWANSTON STATION	244	237	7	2.81%
Watt/I-80 Station	1,294	1,126	168	14.90%
WATT/I-80 WEST STATION	135	131	4	3.13%
GOLD LINE - Total	17,663	16,400	1,263	7.70%
13TH STREET STATION	613	602	11	1.77%
16TH STREET STATION	1,655	1,562	93	5.97%
23RD STREET STATION	461	465	(4)	-0.89%
29TH STREET STATION	1,396	1,316	80	6.04%
39TH STREET STATION	259	254	5	1.90%
48TH STREET STATION	219	212	7	3.07%
59TH STREET STATION	243	237	6	2.63%
7TH & CAPITOL STATION	919	865	55	6.33%
7TH & I/COUNTY CENTER STATION	350	329	21	6.38%
8TH & CAPITOL STATION	57	52	5	10.36%
8TH & H STATION	69	71	(3)	-3.53%
8TH & K STATION	76	74	2	2.34%
8TH & O STATION	677	695	(18)	-2.60%
ARCHIVES PLAZA STATION	532	562	(31)	-5.47%
BUTTERFIELD STATION	483	492	(8)	-1.70%
COLLEGE GREENS STATION	615	587	28	4.72%
CORDOVA TOWN CENTER STATION	464	430	34	7.87%
GLENN STATION	255	235	19	8.21%
HAZEL STATION	179	154	25	16.29%

HISTORIC FOLSOM STATION	505	450	56	12.39%
IRON POINT STATION	466	414	52	12.50%
MATHER FIELD/MILLS STATION	1,379	1,220	159	13.01%
POWER INN STATION	564	478	86	17.99%
SACRAMENTO VALLEY STATION	490	466	24	5.12%
STARFIRE STATION	313	274	38	14.02%
SUNRISE STATION	812	749	63	8.39%
TIBER STATION	293	263	29	11.17%
UNIVERSITY/65TH STREET STATION	1,498	1,266	231	18.25%
WATT/MANLOVE STATION	1,024	915	109	11.94%
ZINFANDEL STATION	794	699	95	13.60%
GREEN LINE - Total	551	390	161	41.28%
13TH STREET STATION	130	90	40	44.68%
7TH & CAPITOL STATION	36	25	11	42.88%
7TH & I/COUNTY CENTER STATION	32	24	8	35.03%
8TH & CAPITOL STATION	25	18	7	40.25%
8TH & K STATION	55	48	7	14.52%
8TH & O STATION	33	22	11	52.00%
ARCHIVES PLAZA STATION	28	25	4	15.59%
TOWNSHIP 9 STATION	212	139	72	52.03%
All Stations	38,035	34,690	3,345	9.64%

Average Saturday Boardings by Station by Line

Station Name	Nov19	Nov18	Difference	% Change
BLUE LINE - Rt#533	8,269	6,900	1,369	19.84%
12TH & I STATION	139	140	(1)	-0.93%
13TH STREET STATION	194	176	18	10.41%
16TH STREET STATION	719	630	89	14.18%
47TH AVENUE STATION	224	172	52	30.57%
4TH AVE/WAYNE HULTGREN STATION	143	125	18	14.39%
7TH & CAPITOL STATION	375	298	77	25.90%
8TH & CAPITOL STATION	106	75	30	39.96%
8TH & O STATION	121	97	24	24.98%
ALKALI FLAT/LA VALENTINA STATION	389	339	49	14.44%
ARCHIVES PLAZA STATION	74	70	5	6.71%
ARDEN/DEL PASO STATION	486	412	75	18.11%
BROADWAY STATION	379	321	58	18.06%
CATHEDRAL SQUARE STATION	357	302	55	18.13%
CENTER PARKWAY STATION	141	120	21	17.76%
CITY COLLEGE STATION	228	195	33	16.67%
CRC STATION	583	467	116	24.77%
FLORIN STATION	466	379	88	23.14%
FRANKLIN STATION	251	173	78	44.98%
FRUITRIDGE STATION	313	194	119	61.22%
GLOBE AVENUE STATION	136	108	27	25.36%
MARCONI/ARCADE STATION	326	322	4	1.20%
MEADOWVIEW STATION	415	357	58	16.31%
ROSEVILLE ROAD STATION	139	95	45	47.04%
ROYAL OAKS STATION	253	240	13	5.38%
ST ROSE OF LIMA PARK STATION	392	322	70	21.87%
SWANSTON STATION	115	104	11	10.26%
Watt/I-80 Station	736	603	133	22.09%
WATT/I-80 WEST STATION	22	20	2	9.32%
GOLD LINE - Rt#507	7,921	6,900	1,021	14.80%
13TH STREET STATION	239	202	37	18.20%
16TH STREET STATION	763	661	102	15.50%
23RD STREET STATION	183	166	17	10.54%
29TH STREET STATION	579	503	77	15.27%
39TH STREET STATION	131	109	21	19.52%
48TH STREET STATION	118	92	26	27.72%
59TH STREET STATION	101	102	(1)	-0.83%
7TH & CAPITOL STATION	432	329	102	30.99%
7TH & I/COUNTY CENTER STATION	122	104	18	17.40%
8TH & CAPITOL STATION	29	28	1	3.75%
8TH & H STATION	30	28	2	8.95%
8TH & K STATION	62	55	7	12.63%
8TH & O STATION	115	111	4	3.29%
ARCHIVES PLAZA STATION	89	89	(1)	-0.65%
BUTTERFIELD STATION	144	139	5	3.66%
COLLEGE GREENS STATION	446	403	43	10.67%
CORDOVA TOWN CENTER STATION	233	201	32	15.88%
GLENN STATION	53	56	(3)	-4.82%

HAZEL STATION	68	67	1	0.86%
HISTORIC FOLSOM STATION	281	241	40	16.57%
IRON POINT STATION	199	189	10	5.24%
MATHER FIELD/MILLS STATION	699	605	94	15.54%
POWER INN STATION	188	185	3	1.40%
SACRAMENTO VALLEY STATION	372	283	89	31.31%
ST ROSE OF LIMA PARK STATION	1	4	(3)	-69.85%
STARFIRE STATION	153	161	(9)	-5.38%
SUNRISE STATION	377	325	52	16.01%
TIBER STATION	140	129	11	8.73%
UNIVERSITY/65TH STREET STATION	635	492	143	29.07%
WATT/MANLOVE STATION	366	349	17	4.76%
ZINFANDEL STATION	574	491	84	17.05%
Final Total - Boardings	16,190	13,800	2,390	17.32%

Average Saturday Alightings by Station by Line

Station Name	Nov19	Nov18	Difference	% Change
BLUE LINE - Rt#533	8,146	6,926	1,220	17.62%
12TH & I STATION	147	135	13	9.31%
13TH STREET STATION	205	181	24	13.18%
16TH STREET STATION	787	682	105	15.41%
47TH AVENUE STATION	208	174	34	19.69%
4TH AVE/WAYNE HULTGREN STATION	144	122	22	17.86%
7TH & CAPITOL STATION	302	221	81	36.50%
8TH & CAPITOL STATION	147	113	34	29.92%
8TH & O STATION	106	93	13	14.51%
ALKALI FLAT/LA VALENTINA STATION	402	340	62	18.18%
ARCHIVES PLAZA STATION	66	55	11	19.54%
ARDEN/DEL PASO STATION	527	422	105	24.90%
BROADWAY STATION	389	348	41	11.82%
CATHEDRAL SQUARE STATION	353	334	19	5.77%
CENTER PARKWAY STATION	125	107	17	16.33%
CITY COLLEGE STATION	212	176	36	20.49%
CRC STATION	627	492	135	27.34%
FLORIN STATION	476	396	80	20.27%
FRANKLIN STATION	210	145	65	45.02%
FRUITRIDGE STATION	254	181	73	40.00%
GLOBE AVENUE STATION	125	114	11	9.70%
MARCONI/ARCADE STATION	310	316	(6)	-1.79%
MEADOWVIEW STATION	417	355	61	17.28%
ROSEVILLE ROAD STATION	123	105	18	16.92%
ROYAL OAKS STATION	246	268	(22)	-8.15%
ST ROSE OF LIMA PARK STATION	327	252	75	29.88%
SWANSTON STATION	111	93	18	19.37%
Watt/I-80 Station	736	649	87	13.33%
WATT/I-80 WEST STATION	23	16	7	44.39%
GOLD LINE - Rt#507	8,044	6,874	1,170	17.02%
13TH STREET STATION	221	181	40	22.18%
16TH STREET STATION	785	703	82	11.65%

23RD STREET STATION	190	167	23	13.85%
29TH STREET STATION	594	452	141	31.28%
39TH STREET STATION	120	92	28	30.66%
48TH STREET STATION	96	96	0	0.27%
59TH STREET STATION	102	86	16	18.76%
7TH & CAPITOL STATION	49	27	22	80.21%
7TH & I/COUNTY CENTER STATION	17	18	(1)	-5.59%
8TH & CAPITOL STATION	173	163	11	6.47%
8TH & H STATION	88	76	12	15.80%
8TH & K STATION	493	363	130	35.83%
8TH & O STATION	109	91	19	20.84%
ARCHIVES PLAZA STATION	98	91	7	7.72%
BUTTERFIELD STATION	158	136	22	15.88%
COLLEGE GREENS STATION	427	388	39	10.04%
CORDOVA TOWN CENTER STATION	225	204	21	10.19%
GLENN STATION	46	46	0	0.32%
HAZEL STATION	70	63	7	11.60%
HISTORIC FOLSOM STATION	292	259	33	12.82%
IRON POINT STATION	226	192	34	17.54%
MATHER FIELD/MILLS STATION	684	618	67	10.80%
POWER INN STATION	179	159	20	12.63%
SACRAMENTO VALLEY STATIO	391	283	109	38.41%
SACRAMENTO VALLEY STATION	25	4	21	567.18%
ST ROSE OF LIMA PARK STATION	1	0	1	193.94%
STARFIRE STATION	131	158	(27)	-17.12%
SUNRISE STATION	386	335	51	15.09%
TIBER STATION	126	117	9	7.76%
UNIVERSITY/65TH STREET STATION	623	484	139	28.64%
WATT/MANLOVE STATION	352	325	27	8.39%
ZINFANDEL STATION	566	498	68	13.63%
Final Total - Alightings	16,190	13,800	2,390	17.32%

Average Sunday Boardings by Station by Line

Station Name	Nov19	Nov18	Difference	% Change
BLUE LINE - Rt#533	5,618	4,800	818	17.04%
12TH & I STATION	122	104	18	17.47%
13TH STREET STATION	103	122	(19)	-15.23%
16TH STREET STATION	518	439	79	18.11%
47TH AVENUE STATION	195	128	66	51.70%
4TH AVE/WAYNE HULTGREN STATION	91	83	8	9.70%
7TH & CAPITOL STATION	241	205	36	17.44%
8TH & CAPITOL STATION	59	53	6	11.89%
8TH & O STATION	72	72	0	0.18%
ALKALI FLAT/LA VALENTINA STATION	300	242	58	23.83%
ARCHIVES PLAZA STATION	37	43	(6)	-13.19%
ARDEN/DEL PASO STATION	346	283	63	22.17%
BROADWAY STATION	278	225	53	23.56%
CATHEDRAL SQUARE STATION	249	226	23	10.16%
CENTER PARKWAY STATION	98	82	16	19.27%
CITY COLLEGE STATION	133	113	20	17.52%
CRC STATION	387	305	82	26.76%
FLORIN STATION	310	282	28	9.92%
FRANKLIN STATION	144	139	6	4.06%
FRUITRIDGE STATION	196	137	59	43.12%
GLOBE AVENUE STATION	91	86	5	5.28%
MARCONI/ARCADE STATION	227	181	46	25.42%
MEADOWVIEW STATION	293	246	47	19.15%
ROSEVILLE ROAD STATION	82	76	5	7.09%
ROYAL OAKS STATION	197	184	14	7.53%
ST ROSE OF LIMA PARK STATION	272	227	45	19.92%
SWANSTON STATION	79	65	14	21.41%
Watt/I-80 Station	453	406	46	11.45%
WATT/I-80 WEST STATION	9	14	(5)	-35.37%
GOLD LINE - Rt#507	5,437	4,800	637	13.27%
13TH STREET STATION	146	152	(6)	-4.06%
16TH STREET STATION	511	449	62	13.86%
23RD STREET STATION	116	109	7	6.72%
29TH STREET STATION	366	336	30	8.97%
39TH STREET STATION	78	75	3	3.45%
48TH STREET STATION	71	59	11	18.86%
59TH STREET STATION	72	64	9	13.59%
7TH & CAPITOL STATION	281	227	53	23.45%
7TH & I/COUNTY CENTER STATION	92	77	14	18.40%
8TH & CAPITOL STATION	21	19	2	10.33%
8TH & H STATION	27	23	5	20.53%
8TH & K STATION	35	36	(1)	-2.60%
8TH & O STATION	75	81	(5)	-6.72%
ARCHIVES PLAZA STATION	58	58	1	1.17%
BUTTERFIELD STATION	92	100	(8)	-7.86%
COLLEGE GREENS STATION	335	281	54	19.06%
CORDOVA TOWN CENTER STATION	155	146	10	6.60%
GLENN STATION	29	33	(5)	-13.84%

HAZEL STATION	38	46	(8)	-18.15%
HISTORIC FOLSOM STATION	160	159	1	0.75%
IRON POINT STATION	144	126	19	14.96%
MATHER FIELD/MILLS STATION	496	427	69	16.17%
POWER INN STATION	155	119	36	30.54%
SACRAMENTO VALLEY STATION	239	216	23	10.86%
STARFIRE STATION	118	118	(0)	-0.16%
SUNRISE STATION	286	239	48	20.02%
TIBER STATION	102	86	15	17.89%
UNIVERSITY/65TH STREET STATION	452	357	95	26.52%
WATT/MANLOVE STATION	267	235	32	13.78%
ZINFANDEL STATION	420	348	72	20.58%
Final Total - Boardings	11,055	9,600	1,455	15.16%

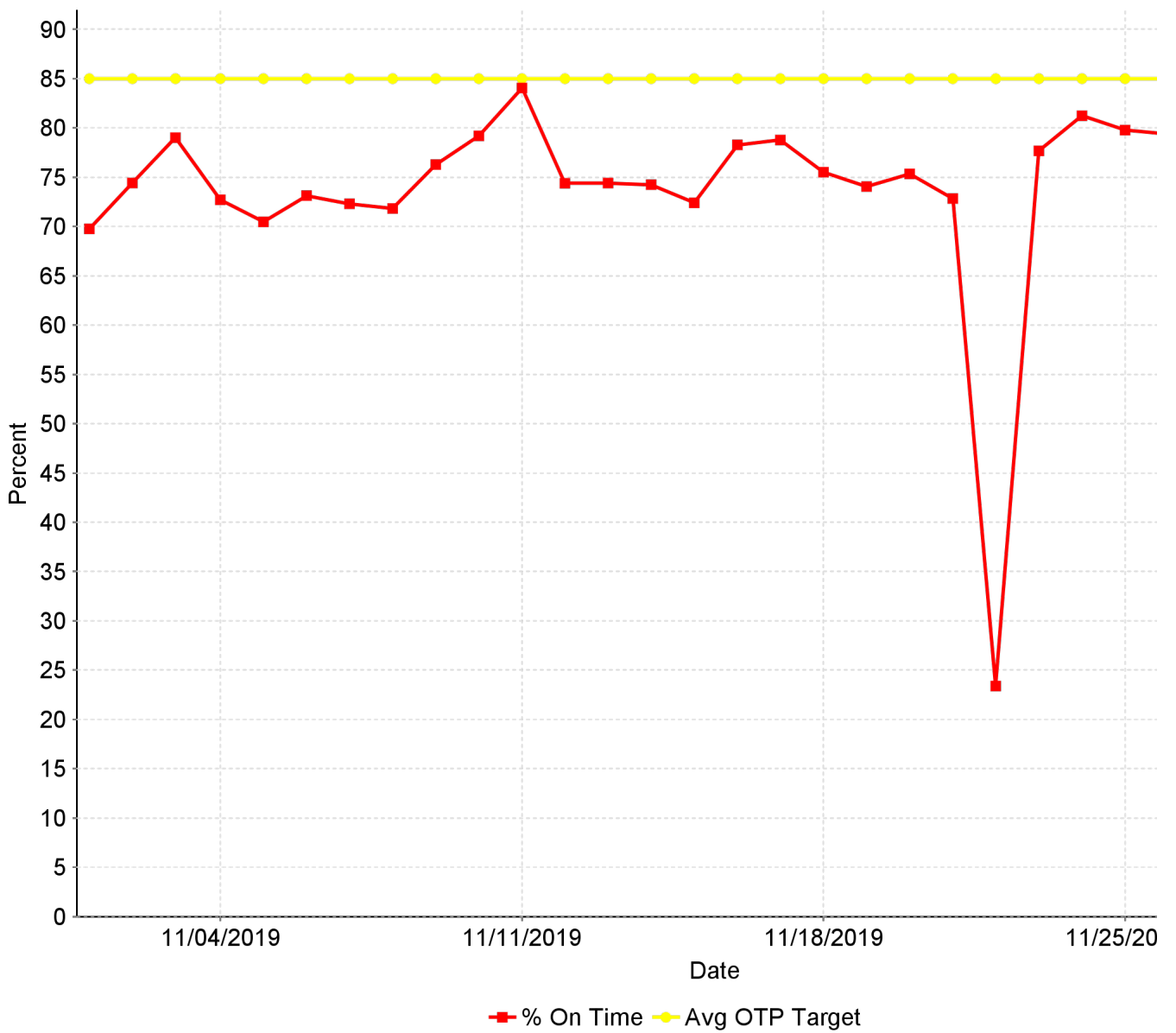
Average Sunday Alightings by Station by Line

Station Name	Nov19	Nov18	Difference	% Change
BLUE LINE - Rt#533	5,519	4,810	710	14.76%
12TH & I STATION	110	93	17	18.23%
13TH STREET STATION	102	130	(28)	-21.65%
16TH STREET STATION	519	484	35	7.14%
47TH AVENUE STATION	188	129	60	46.34%
4TH AVE/WAYNE HULTGREN STATION	90	79	11	13.50%
7TH & CAPITOL STATION	193	159	34	21.62%
8TH & CAPITOL STATION	82	82	(0)	-0.13%
8TH & O STATION	74	65	9	13.89%
ALKALI FLAT/LA VALENTINA STATION	299	255	44	17.37%
ARCHIVES PLAZA STATION	40	40	1	1.85%
ARDEN/DEL PASO STATION	383	279	103	37.05%
BROADWAY STATION	296	242	53	22.06%
CATHEDRAL SQUARE STATION	253	225	28	12.58%
CENTER PARKWAY STATION	88	73	16	21.52%
CITY COLLEGE STATION	126	115	11	9.39%
CRC STATION	397	319	78	24.39%
EMPLOYEE PLATFORM STATION	29	29	(0)	-0.20%
FLORIN STATION	328	293	35	12.12%
FRANKLIN STATION	146	116	30	26.09%
FRUITRIDGE STATION	188	135	53	38.98%
GLOBE AVENUE STATION	85	76	9	11.22%
MARCONI/ARCADE STATION	218	183	35	19.26%
MEADOWVIEW STATION	275	244	31	12.62%
ROSEVILLE ROAD STATION	80	73	7	9.73%
ROYAL OAKS STATION	184	199	(15)	-7.67%
ST ROSE OF LIMA PARK STATION	183	169	14	8.41%
SWANSTON STATION	69	69	1	0.76%
Watt/I-80 Station	484	447	37	8.26%
WATT/I-80 WEST STATION	11	9	2	21.45%
GOLD LINE - Rt#507	5,536	4,790	745	15.56%
13TH STREET STATION	131	126	4	3.41%
16TH STREET STATION	528	471	57	12.01%

23RD STREET STATION	118	116	2	2.06%
29TH STREET STATION	353	316	37	11.74%
39TH STREET STATION	84	80	3	4.03%
48TH STREET STATION	77	64	14	21.75%
59TH STREET STATION	74	62	13	20.68%
7TH & CAPITOL STATION	25	22	2	10.93%
7TH & I/COUNTY CENTER STATION	11	12	(1)	-6.95%
8TH & CAPITOL STATION	111	114	(3)	-2.30%
8TH & H STATION	66	50	16	31.01%
8TH & K STATION	295	258	37	14.33%
8TH & O STATION	74	69	5	7.13%
ARCHIVES PLAZA STATION	59	64	(5)	-7.33%
BUTTERFIELD STATION	103	97	7	6.94%
COLLEGE GREENS STATION	323	276	47	17.03%
CORDOVA TOWN CENTER STATION	166	135	31	23.27%
GLENN STATION	28	26	2	7.49%
HAZEL STATION	53	45	8	16.61%
HISTORIC FOLSOM STATION	178	162	16	10.10%
IRON POINT STATION	149	124	25	20.45%
MATHER FIELD/MILLS STATION	507	408	100	24.42%
POWER INN STATION	161	120	41	34.21%
SACRAMENTO VALLEY STATIO	227	199	28	13.85%
SACRAMENTO VALLEY STATION	-	1	(1)	-100.00%
ST ROSE OF LIMA PARK STATION	-	1	(1)	-100.00%
STARFIRE STATION	126	106	20	18.49%
SUNRISE STATION	265	265	(1)	-0.22%
TIBER STATION	98	75	23	31.52%
UNIVERSITY/65TH STREET STATION	458	338	120	35.47%
WATT/MANLOVE STATION	285	230	55	23.76%
ZINFANDEL STATION	401	357	44	12.27%
Final Total - Alightings	11,055	9,600	1,455	15.16%

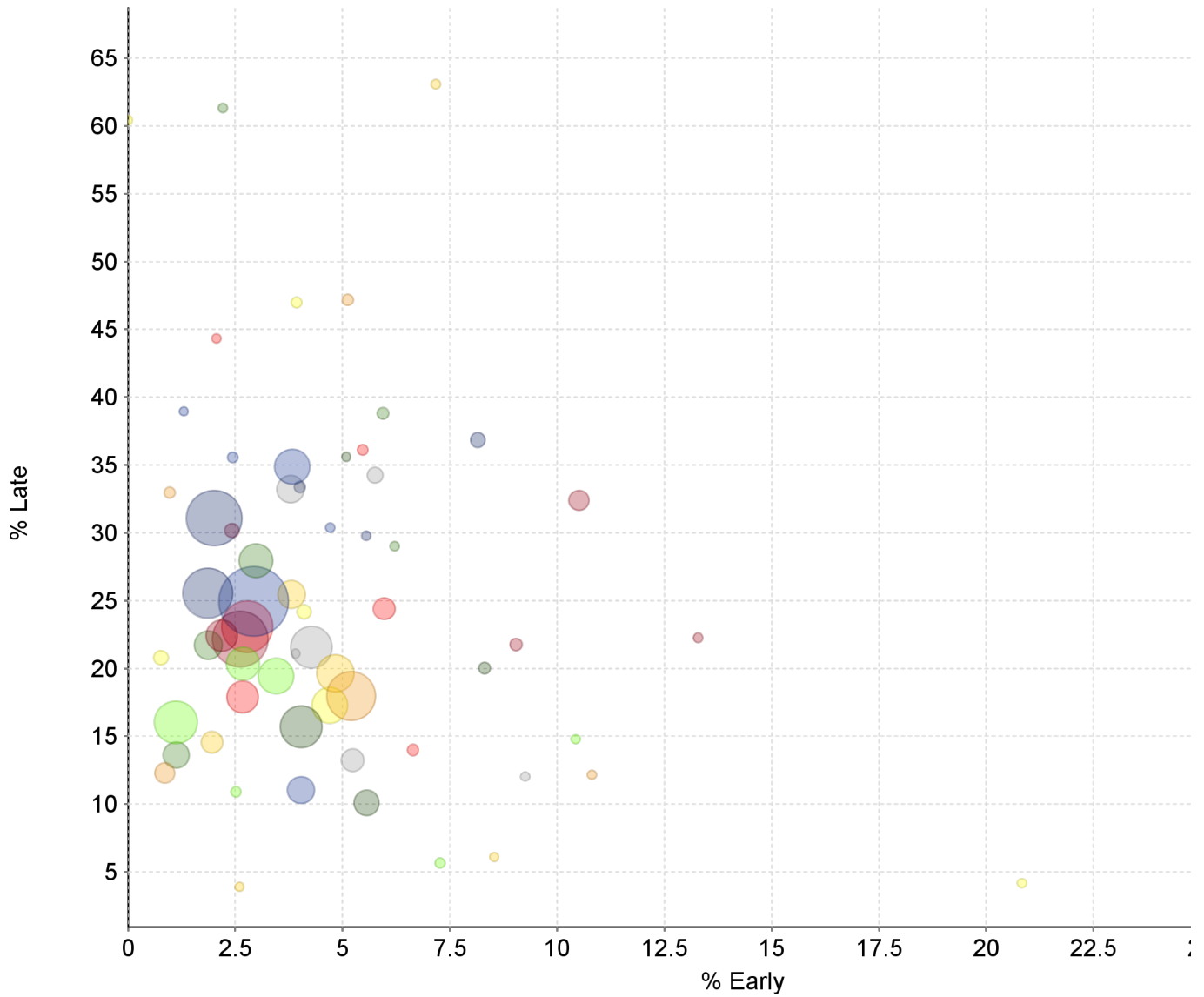
CR-0105 On Time Performance KPI Trend

On Time Performance



CR-0106 On Time Performance Graph

Shows all Routes together on one chart for easy visual indication of outliers.



Route	% Early	% Late	Timepoints Processed
10 - 10 FSL	5.98	24.41	4,753
20 - 20	0.00	60.43	139
001 - GREENBACK	1.12	16.03	12,168
011 - NATOMAS/LAND PARK	3.83	34.87	9,484
013 - NATOMAS/ARDEN	2.98	27.94	9,048
015 - DEL PASO HEIGHTS	1.96	14.56	4,541
019 - RIO LINDA	5.24	13.23	4,889
021 - SUNRISE	2.18	22.41	8,153
023 - EL CAMINO	1.87	25.56	14,794
025 - MARCONI	4.04	15.70	11,940
026 - FULTON	5.21	17.95	14,390
030 - J STREET	2.67	17.89	8,313
033 - DOS RIOS	4.11	24.16	1,850
038 - TAHOE PARK	2.68	20.36	8,733
051 - STOCKTON/BROADWAY	2.93	24.95	21,890
056 - MEADOWVIEW	1.87	21.71	7,046

Route	% Early	% Late	Timepoints Processed
061 - FRUITRIDGE	4.83	19.64	10,283
062 - FREEPORT	4.27	21.57	11,790
067 - FRANKLIN	2.62	22.18	16,898
068 - OAK PARK	2.01	31.08	16,800
072 - ROSEMONT	5.56	10.08	5,971
075 - MATHER	0.85	12.30	3,977
081 - FLORIN	2.78	23.09	15,333
082 - NORTHROP/MORSE	4.71	17.29	9,712
084 - WATT	3.45	19.43	9,617
086 - GRAND	4.03	11.03	6,547
087 - HOWE	1.13	13.61	6,214
088 - WEST EL CAMINO	3.81	25.46	6,768
093 - HILLSDALE	3.79	33.21	6,756
102 - RIVERSIDE COMMUTER	2.42	30.17	1,982
103 - RIVERSIDE EXPRESS	4.00	33.37	899
105 - ELSIE	5.08	35.59	118
106 - LAND PARK COMMUTER	5.12	47.17	937
107 - SOUTH LAND PARK EXPRESS	5.47	36.12	695
109 - HAZEL EXPRESS	3.93	46.97	611
113 - NORTH MARKET COMMUTER	7.27	5.66	495
129 - ARDEN COMMUTER	2.44	35.57	655
134 - McKINLEY COMMUTER	5.94	38.79	1,044
161 - BELVEDERE	2.60	3.90	77
170 - JIBE EASTSIDE	5.76	34.24	2,535
171 - JIBE WESTSIDE	9.04	21.76	1,305
172 - JIBE CENTRAL	8.15	36.85	2,220
174 - JIBE MIDWEST	8.31	20.02	1,119
175 - RANCHO CORDOVAN - SUNRIDGE PARK	0.97	32.96	719
176 - RANCHO CORDOVAN - ANATOLIA	6.64	13.99	858
177 - RANCHO CORDOVAN - VILLAGES	0.77	20.80	1,952
193 - AUBURN COMMUTER	2.52	10.90	477
205 - Fruitridge Road - Freeport	4.71	30.37	191
206 - 12TH AVE - SUTTERVILLE RD	6.22	29.02	193
210 - LA RIVERA DR	8.54	6.10	82
211 - COLLEGE GREENS	3.91	21.09	128
212 - 14TH AVE - 21ST AVE	13.28	22.27	256
213 - FRUITRIDGE RD - STOCKTON BLVD	5.56	29.80	198
214 - BROADWAY - STOCKTON BLVD	26.47	10.78	204
226 - POCKET RD - RIVERSIDE BLVD	10.81	12.16	74
227 - SOUTH LAND PARK - GREENHAVEN DR	2.06	44.33	97
228 - GLORIA DR - RUSH RIVER DR	20.83	4.17	96

Route	% Early	% Late	Timepoints Processed
246 - MEADOWVIEW - GREENHAVEN	10.43	14.78	115
247 - 21ST ST - FLORIN RD	1.30	38.96	77
248 - MEADOWVIEW - RUSH RIVER	2.21	61.33	181
252 - FREEPORT - FRUITRIDGE - ML KING	7.18	63.08	195
255 - LA RIVIERA - COLLEGE GREENS	9.26	12.04	108
051X - W/X	10.51	32.39	4,082

CR-0103 Overall On Time

Overall On Time Timepoints

On Time	Early	Late	Timepoints Processed
74.10%	3.46%	22.44%	293,772