



# Ridership Report (December 2019)

## Year to Date Summary

Category	FY20 YTD	FY19YTD	Difference	% Change
Bus	5,263,407	4,999,019	264,387	5.3%
Light Rail	5,630,996	5,294,822	336,174	6.3%
System Total	10,894,403	10,293,841	600,561	5.8%

## Current Month Summary

Category	December 2019	December 2018	Difference	% Change
Bus	847,052	779,788	67,263	8.6%
Light Rail	882,505	820,277	62,228	7.6%
System Total	1,729,557	1,600,065	129,491	8.1%

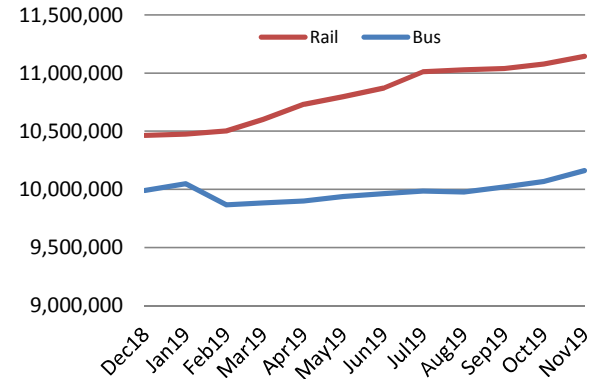
## Daily Summary

Category	December 2019	December 2018	Difference	% Change
Bus (M-F)	35,181	33,672	1,509	4.5%
Bus (Sat)	14,345	12,516	1,829	14.6%
Bus (Sun)	8,260	6,833	1,427	20.9%
Light Rail (M-F)	36,363	35,320	1,043	3.0%
Light Rail (Sat)	15,187	10,700	4,487	41.9%
Light Rail (Sun)	9,103	9,600	(497)	-5.2%

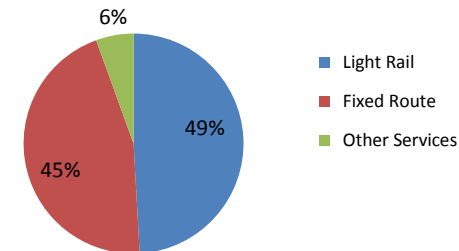
## E-Tran Ridership Summary (E-Van included)

Category	Current Year	Prior Year	Difference	% Change
E-Tran (YTD)	401,528	382,416	19,112	5.0%
E-Tran (Monthly)	59,692	56,925	2,767	4.9%
E-Tran (Weekday)	2,731	2,707	24	0.9%

## Trailing 12 Month Trend



## December Ridership by Mode



Other services include E-Tran, Folsom, SmaRT Ride, CBS and Special Services

## Route Level Ridership Comparison (Bus)

### Weekday Route Comparison

Route	Dec 2019	Dec 2018	Difference	% Change
1	1,588	1,688	(100)	-6%
11	895	567	328	58%
13	662	245	417	170%
15	698	1,048	(350)	-33%
19	379	594	(215)	-36%
21	1,172	951	221	23%
23	1,639	1,510	129	9%
25	1,166	936	229	24%
26	1,373	973	400	41%
30	1,529	1,587	(58)	-4%
33	219	260	(41)	-16%
38	664	374	290	78%
51	2,972	3,040	(68)	-2%
56	888	952	(64)	-7%
61	905	456	449	98%
62	1,003	899	104	12%
67	1,367	1,078	289	27%
68	1,761	1,071	691	64%
72	1,146	939	207	22%
75	398	156	242	155%
81	2,702	2,348	354	15%
82	1,452	1,394	57	4%
84	1,447	738	709	96%
86	1,126	1,015	111	11%
87	1,027	943	84	9%
88	725	714	11	2%
93	769	771	(2)	0%
102	243	-	243	
103	189	60	130	218%
105	40	-	40	
106	113	-	113	
107	125	-	125	
109	88	86	2	3%
113	66	-	66	
129	101	-	101	
134	154	-	154	
161	10	-	10	
170	214	159	56	35%
171	87	62	24	39%
172	150	115	34	30%
174	69	72	(3)	-4%
175	28	24	5	19%
176	25	32	(7)	-23%
177	139	95	44	46%
193	-	-	-	
205	37	26	11	44%
206	35	23	12	54%
210	55	40	15	37%
211	88	85	3	3%
212	114	88	27	30%
213	57	23	35	152%
214	39	40	(1)	-2%
226	27	35	(8)	-23%
227	24	22	2	9%
228	28	28	(0)	0%
246	59	42	17	40%
247	13	11	2	17%
248	46	34	12	36%
252	47	32	15	45%
255	78	52	25	49%
SmaRT Ride	429	360	69	19%
Folsom FR	252	-	252	
Folsom DAR	43	-	43	

### Saturday Route Comparison

Route	Dec 2019	Dec 2018	Difference	% Change
1	750	728	22	3%
11	412	245	167	68%
13	433	-	433	
15	365	515	(150)	-29%
19	193	280	(87)	-31%
21	561	484	77	16%
23	1,077	1,142	(64)	-6%
25	567	376	192	51%
26	693	287	406	141%
30	253	432	(179)	-42%
38	228	192	36	18%
51	1,612	1,551	61	4%
56	425	517	(93)	-18%
61	369	-	369	
62	262	279	(17)	-6%
67	262	279	(17)	-6%
68	1,071	540	532	99%
72	276	234	42	18%
75	166	104	62	60%
81	1,150	1,059	92	9%
82	393	405	(11)	-3%
84	775	351	423	121%
86	444	372	72	19%
87	432	331	101	30%
88	322	255	67	26%
93	347	292	55	19%

### Sunday Route Comparison

Route	Dec 2019	Dec 2018	Difference	% Change
1	448	461	(13)	-3%
11	282	-	282	
13	259	-	259	
15	237	397	(160)	-40%
19	137	219	(82)	-37%
21	283	271	12	4%
23	516	638	(122)	-19%
25	282	-	282	
26	298	189	109	58%
30	171	200	(28)	-14%
38	165	128	36	28%
51	1,048	889	159	18%
56	226	272	(46)	-17%
61	229	-	229	
62	146	-	146	
67	415	367	48	13%
68	541	381	160	42%
72	165	165	(1)	-1%
75	106	81	25	31%
81	648	522	127	24%
82	263	332	(69)	-21%
84	422	-	422	
86	259	244	15	6%
87	275	177	98	56%
88	229	173	56	33%
93	209	198	11	6%

Please note:

Only Routes operating post SacRT forward are shown above.

## Average Weekday Boardings by Station by Line

Station Name	Dec19	Dec18	Difference	% Change
<b>BLUE LINE - Total</b>	<b>18,775</b>	<b>18,400</b>	<b>375</b>	<b>2.04%</b>
12TH & I STATION	488	463	25	5.43%
13TH STREET STATION	525	511	14	2.74%
16TH STREET STATION	1,528	1,588	(60)	-3.78%
47TH AVENUE STATION	539	546	(7)	-1.26%
4TH AVE/WAYNE HULTGREN STATION	602	541	60	11.16%
7TH & CAPITOL STATION	788	714	75	10.44%
8TH & CAPITOL STATION	413	385	28	7.39%
8TH & O STATION	804	755	49	6.47%
ALKALI FLAT/LA VALENTINA STA	675	680	(5)	-0.81%
ARCHIVES PLAZA STATION	518	506	12	2.34%
ARDEN/DEL PASO STATION	818	776	42	5.36%
BROADWAY STATION	665	647	18	2.80%
CATHEDRAL SQUARE STATION	755	769	(14)	-1.79%
CENTER PARKWAY STATION	304	261	43	16.51%
CITY COLLEGE STATION	776	902	(126)	-13.97%
CRC STATION	1,329	1,293	36	2.78%
FLORIN STATION	901	883	18	2.01%
FRANKLIN STATION	741	693	48	6.87%
FRUITRIDGE STATION	513	445	69	15.45%
GLOBE AVENUE STATION	238	256	(18)	-7.08%
MARCONI/ARCADE STATION	664	691	(26)	-3.82%
MEADOWVIEW STATION	849	876	(27)	-3.07%
ROSEVILLE ROAD STATION	665	629	36	5.71%
ROYAL OAKS STATION	374	390	(15)	-3.94%
ST ROSE OF LIMA PARK STATION	648	591	57	9.57%
SWANSTON STATION	241	244	(3)	-1.34%
Watt/I-80 Station	1,201	1,158	43	3.73%
WATT/I-80 WEST STATION	146	134	11	8.46%
<b>GOLD LINE - Total</b>	<b>17,043</b>	<b>16,500</b>	<b>543</b>	<b>3.29%</b>
13TH STREET STATION	613	606	7	1.15%
16TH STREET STATION	1,561	1,572	(10)	-0.64%
23RD STREET STATION	469	468	1	0.21%
29TH STREET STATION	1,419	1,324	95	7.15%
39TH STREET STATION	250	256	(6)	-2.38%
48TH STREET STATION	211	214	(3)	-1.18%
59TH STREET STATION	252	238	14	5.67%
7TH & CAPITOL STATION	991	870	121	13.96%
7TH & I/COUNTY CENTER STATION	359	331	28	8.50%
8TH & CAPITOL STATION	56	52	4	7.25%
8TH & H STATION	73	72	1	1.67%
8TH & K STATION	82	74	8	10.82%
8TH & O STATION	731	699	32	4.61%
ARCHIVES PLAZA STATION	582	566	16	2.89%
BUTTERFIELD STATION	474	495	(20)	-4.14%
COLLEGE GREENS STATION	585	590	(6)	-0.99%

CORDOVA TOWN CENTER STATION	448	432	16	3.63%
GLENN STATION	244	237	7	2.89%
HAZEL STATION	153	155	(2)	-0.99%
HISTORIC FOLSOM STATION	468	452	16	3.52%
IRON POINT STATION	447	417	30	7.17%
MATHER FIELD/MILLS STATION	1,240	1,228	12	1.02%
POWER INN STATION	522	481	41	8.50%
SACRAMENTO VALLEY STATION	492	469	23	4.94%
STARFIRE STATION	287	276	11	4.00%
SUNRISE STATION	781	754	27	3.63%
TIBER STATION	282	265	17	6.41%
UNIVERSITY/65TH STREET STATION	1,197	1,274	(77)	-6.04%
WATT/MANLOVE STATION	969	920	48	5.25%
ZINFANDEL STATION	797	703	94	13.42%
<b>GREEN LINE - Total</b>	<b>545</b>	<b>420</b>	<b>125</b>	<b>29.76%</b>
13TH STREET STATION	125	97	28	29.13%
7TH & CAPITOL STATION	42	27	15	56.82%
7TH & I/COUNTY CENTER STATION	28	26	2	7.40%
8TH & CAPITOL STATION	26	19	7	36.71%
8TH & K STATION	54	51	3	4.99%
8TH & O STATION	34	23	10	43.89%
ARCHIVES PLAZA STATION	34	26	7	27.86%
TOWNSHIP 9 STATION	202	150	52	34.91%
<b>All Stations</b>	<b>36,363</b>	<b>35,320</b>	<b>1,043</b>	<b>2.95%</b>

## Average Weekday Alightings by Station by Line

Station Name	Dec19	Dec18	Difference	% Change
<b>BLUE LINE - Rt#533</b>	<b>18,456</b>	<b>17,364</b>	<b>1,091</b>	<b>6.28%</b>
12TH & I STATION	513	464	49	10.59%
13TH STREET STATION	540	506	34	6.80%
16TH STREET STATION	1,560	1,546	13	0.86%
47TH AVENUE STATION	542	532	10	1.82%
4TH AVE/WAYNE HULTGREN STATION	502	418	84	20.14%
7TH & CAPITOL STATION	667	597	70	11.74%
8TH & CAPITOL STATION	508	457	51	11.10%
8TH & O STATION	717	656	61	9.36%
ALKALI FLAT/LA VALENTINA STATION	680	644	37	5.68%
ARCHIVES PLAZA STATION	496	443	53	11.90%
ARDEN/DEL PASO STATION	861	772	89	11.58%
BROADWAY STATION	683	634	49	7.71%
CATHEDRAL SQUARE STATION	782	766	15	2.02%
CENTER PARKWAY STATION	237	199	38	18.84%
CITY COLLEGE STATION	763	785	(23)	-2.89%
CRC STATION	1,364	1,290	74	5.77%
FLORIN STATION	886	844	43	5.07%
FRANKLIN STATION	723	632	92	14.53%
FRUITRIDGE STATION	522	419	103	24.72%
GLOBE AVENUE STATION	251	254	(2)	-0.84%
MARCONI/ARCADE STATION	633	631	2	0.29%
MEADOWVIEW STATION	829	824	5	0.56%
ROSEVILLE ROAD STATION	640	610	30	5.00%
ROYAL OAKS STATION	374	373	1	0.32%
ST ROSE OF LIMA PARK STATION	536	474	61	12.93%
SWANSTON STATION	235	238	(3)	-1.32%
Watt/I-80 Station	1,209	1,159	50	4.31%
WATT/I-80 WEST STATION	136	130	6	4.65%
<b>GOLD LINE - Rt#507</b>	<b>17,399</b>	<b>17,432</b>	<b>(33)</b>	<b>-0.19%</b>
13TH STREET STATION	513	530	(17)	-3.21%
16TH STREET STATION	1,622	1,676	(54)	-3.22%
23RD STREET STATION	457	484	(28)	-5.69%
29TH STREET STATION	1,396	1,372	24	1.75%
39TH STREET STATION	256	264	(8)	-2.91%
48TH STREET STATION	225	244	(19)	-7.70%
59TH STREET STATION	270	268	2	0.69%
7TH & CAPITOL STATION	60	58	3	4.58%
7TH & I/COUNTY CENTER STATION	26	26	(0)	-0.26%
8TH & CAPITOL STATION	655	670	(15)	-2.28%
8TH & H STATION	349	339	11	3.10%
8TH & K STATION	727	662	65	9.86%
8TH & O STATION	640	645	(5)	-0.75%
ARCHIVES PLAZA STATION	563	609	(46)	-7.53%
BUTTERFIELD STATION	484	507	(23)	-4.58%

COLLEGE GREENS STATION	559	600	(41)	-6.82%
CORDOVA TOWN CENTER STATION	447	427	20	4.76%
GLENN STATION	222	238	(16)	-6.84%
HAZEL STATION	143	158	(14)	-9.13%
HISTORIC FOLSOM STATION	469	473	(4)	-0.82%
IRON POINT STATION	440	425	14	3.32%
MATHER FIELD/MILLS STATION	1,225	1,238	(13)	-1.07%
POWER INN STATION	526	501	26	5.14%
SACRAMENTO VALLEY STATION	452	427	25	5.84%
SACRAMENTO VALLEY STATION	318	234	83	35.51%
STARFIRE STATION	265	258	7	2.90%
SUNRISE STATION	758	769	(11)	-1.46%
TIBER STATION	264	268	(4)	-1.44%
UNIVERSITY/65TH STREET STATION	1,256	1,344	(88)	-6.54%
WATT/MANLOVE STATION	992	962	30	3.11%
ZINFANDEL STATION	817	753	65	8.58%
<b>GREEN LINE - Rt#519</b>	<b>509</b>	<b>524</b>	<b>(15)</b>	<b>-2.90%</b>
13TH STREET STATION	165	169	(3)	-2.04%
7TH & CAPITOL STATION	50	42	8	19.10%
7TH & I/COUNTY CENTER STATIO	53	58	(5)	-8.55%
8TH & CAPITOL STATION	10	11	(1)	-10.49%
8TH & K STATION	21	31	(10)	-33.16%
8TH & O STATION	26	26	1	2.73%
ARCHIVES PLAZA STATION	22	27	(5)	-18.32%
TOWNSHIP 9 STATION	161	160	1	0.52%
<b>All Stations</b>	<b>36,363</b>	<b>35,320</b>	<b>1,043</b>	<b>2.95%</b>

## Average Saturday Boardings by Station by Line

Station Name	Dec19	Dec18	Difference	% Change
<b>BLUE LINE - Rt#533</b>	<b>8,015</b>	<b>5,400</b>	<b>2,615</b>	<b>48.43%</b>
12TH & I STATION	140	109	30	27.80%
13TH STREET STATION	177	137	39	28.54%
16TH STREET STATION	676	493	183	37.22%
47TH AVENUE STATION	218	134	84	62.37%
4TH AVE/WAYNE HULTGREN STATION	140	98	43	43.52%
7TH & CAPITOL STATION	398	233	165	70.77%
8TH & CAPITOL STATION	84	59	25	41.96%
8TH & O STATION	119	76	43	56.82%
ALKALI FLAT/LA VALENTINA STATION	361	266	95	35.82%
ARCHIVES PLAZA STATION	77	54	23	41.93%
ARDEN/DEL PASO STATION	498	322	176	54.59%
BROADWAY STATION	358	252	106	42.31%
CATHEDRAL SQUARE STATION	350	236	113	47.94%
CENTER PARKWAY STATION	148	94	54	57.81%
CITY COLLEGE STATION	208	153	55	35.86%
CRC STATION	579	365	213	58.40%
FLORIN STATION	448	296	152	51.27%
FRANKLIN STATION	267	135	132	97.71%
FRUITRIDGE STATION	248	152	96	63.27%
GLOBE AVENUE STATION	110	85	25	29.80%
MARCONI/ARCADE STATION	347	252	95	37.85%
MEADOWVIEW STATION	428	279	149	53.27%
ROSEVILLE ROAD STATION	124	74	49	66.69%
ROYAL OAKS STATION	252	188	64	33.88%
ST ROSE OF LIMA PARK STATION	361	252	109	43.34%
SWANSTON STATION	115	82	34	41.04%
Watt/I-80 Station	717	472	245	51.92%
WATT/I-80 WEST STATION	21	16	5	32.83%
<b>GOLD LINE - Rt#507</b>	<b>7,172</b>	<b>5,300</b>	<b>1,872</b>	<b>35.32%</b>
13TH STREET STATION	201	155	46	29.40%
16TH STREET STATION	672	508	165	32.41%
23RD STREET STATION	160	127	33	25.88%
29TH STREET STATION	508	386	122	31.53%
39TH STREET STATION	96	84	12	13.90%
48TH STREET STATION	93	71	22	31.48%
59TH STREET STATION	104	78	26	32.82%
7TH & CAPITOL STATION	393	253	140	55.38%
7TH & I/COUNTY CENTER STATION	117	80	37	46.69%
8TH & CAPITOL STATION	25	21	3	15.12%
8TH & H STATION	31	21	9	44.43%
8TH & K STATION	67	42	24	57.90%
8TH & O STATION	105	85	20	23.77%
ARCHIVES PLAZA STATION	96	69	28	40.79%

BUTTERFIELD STATION	128	107	21	19.64%
COLLEGE GREENS STATION	397	309	87	28.19%
CORDOVA TOWN CENTER STATION	222	155	68	43.79%
GLENN STATION	47	43	4	9.51%
HAZEL STATION	51	52	(1)	-1.86%
HISTORIC FOLSOM STATION	249	185	64	34.57%
IRON POINT STATION	197	145	52	35.64%
MATHER FIELD/MILLS STATION	611	465	146	31.40%
POWER INN STATION	195	142	53	37.17%
SACRAMENTO VALLEY STATION	349	217	131	60.42%
ST ROSE OF LIMA PARK STATION	2	3	(2)	-52.20%
STARFIRE STATION	149	124	25	20.16%
SUNRISE STATION	344	250	94	37.49%
TIBER STATION	138	99	38	38.65%
UNIVERSITY/65TH STREET STATION	534	378	156	41.38%
WATT/MANLOVE STATION	357	268	89	33.25%
ZINFANDEL STATION	536	377	159	42.20%
<b>Final Total - Boardings</b>	<b>15,187</b>	<b>10,700</b>	<b>4,487</b>	<b>41.93%</b>

### Average Saturday Alightings by Station by Line

Station Name	Dec19	Dec18	Difference	% Change
<b>BLUE LINE - Rt#533</b>	<b>8,007</b>	<b>5,370</b>	<b>2,637</b>	<b>49.11%</b>
12TH & I STATION	156	104	52	49.58%
13TH STREET STATION	200	140	60	43.00%
16TH STREET STATION	719	529	191	36.10%
47TH AVENUE STATION	211	135	76	56.13%
4TH AVE/WAYNE HULTGREN STATION	129	95	34	36.16%
7TH & CAPITOL STATION	278	171	106	62.14%
8TH & CAPITOL STATION	208	88	120	137.16%
8TH & O STATION	110	72	38	52.93%
ALKALI FLAT/LA VALENTINA STATION	373	263	110	41.57%
ARCHIVES PLAZA STATION	89	43	46	107.19%
ARDEN/DEL PASO STATION	500	327	173	52.98%
BROADWAY STATION	373	270	103	38.32%
CATHEDRAL SQUARE STATION	346	259	87	33.60%
CENTER PARKWAY STATION	116	83	33	39.40%
CITY COLLEGE STATION	198	136	61	44.92%
CRC STATION	622	382	240	62.90%
FLORIN STATION	467	307	160	52.22%
FRANKLIN STATION	246	112	134	118.95%
FRUITRIDGE STATION	244	141	103	73.55%
GLOBE AVENUE STATION	114	89	25	28.47%
MARCONI/ARCADE STATION	338	245	94	38.23%
MEADOWVIEW STATION	410	276	135	48.88%
ROSEVILLE ROAD STATION	120	82	38	46.84%
ROYAL OAKS STATION	241	207	33	16.09%



ST ROSE OF LIMA PARK STATION	309	195	114	58.34%
SWANSTON STATION	127	72	55	77.11%
Watt/I-80 Station	696	503	193	38.25%
WATT/I-80 WEST STATION	20	12	8	60.75%
<b>GOLD LINE - Rt#507</b>	<b>7,180</b>	<b>5,330</b>	<b>1,850</b>	<b>34.70%</b>
13TH STREET STATION	178	140	38	26.98%
16TH STREET STATION	676	545	131	23.97%
23RD STREET STATION	155	129	25	19.70%
29TH STREET STATION	517	351	167	47.51%
39TH STREET STATION	111	71	40	55.84%
48TH STREET STATION	87	74	12	16.41%
59TH STREET STATION	105	67	38	57.09%
7TH & CAPITOL STATION	35	21	14	65.53%
7TH & I/COUNTY CENTER STATION	15	14	1	9.75%
8TH & CAPITOL STATION	181	126	55	43.41%
8TH & H STATION	69	59	10	17.31%
8TH & K STATION	452	282	170	60.39%
8TH & O STATION	88	70	18	25.49%
ARCHIVES PLAZA STATION	96	71	25	36.07%
BUTTERFIELD STATION	135	105	30	28.42%
COLLEGE GREENS STATION	376	301	75	24.88%
CORDOVA TOWN CENTER STATION	220	158	61	38.81%
GLENN STATION	43	36	7	19.48%
HAZEL STATION	58	49	10	20.32%
HISTORIC FOLSOM STATION	259	201	58	29.02%
IRON POINT STATION	196	149	47	31.52%
MATHER FIELD/MILLS STATION	624	479	145	30.33%
POWER INN STATION	191	123	67	54.61%
SACRAMENTO VALLEY STATIO	318	219	99	45.17%
SACRAMENTO VALLEY STATION	14	3	11	401.08%
ST ROSE OF LIMA PARK STATION	0	0	(0)	-18.63%
STARFIRE STATION	147	123	24	19.41%
SUNRISE STATION	343	260	83	32.05%
TIBER STATION	118	90	27	30.40%
UNIVERSITY/65TH STREET STATION	513	376	138	36.71%
WATT/MANLOVE STATION	334	252	82	32.63%
ZINFANDEL STATION	526	386	139	36.13%
<b>Final Total - Alightings</b>	<b>15,187</b>	<b>10,700</b>	<b>4,487</b>	<b>41.93%</b>

## Average Sunday Boardings by Station by Line

Station Name	Dec19	Dec18	Difference	% Change
<b>BLUE LINE - Rt#533</b>	<b>4,620</b>	<b>4,200</b>	<b>420</b>	<b>10.00%</b>
12TH & I STATION	93	91	2	2.75%
13TH STREET STATION	112	106	6	5.27%
16TH STREET STATION	427	384	43	11.16%
47TH AVENUE STATION	112	112	(1)	-0.67%
4TH AVE/WAYNE HULTGREN STATION	69	73	(4)	-5.20%
7TH & CAPITOL STATION	190	179	10	5.66%
8TH & CAPITOL STATION	52	46	5	11.44%
8TH & O STATION	67	63	4	6.81%
ALKALI FLAT/LA VALENTINA STATION	241	212	29	13.86%
ARCHIVES PLAZA STATION	40	37	3	7.80%
ARDEN/DEL PASO STATION	299	248	52	20.84%
BROADWAY STATION	227	197	30	15.31%
CATHEDRAL SQUARE STATION	200	197	2	1.15%
CENTER PARKWAY STATION	90	72	18	25.80%
CITY COLLEGE STATION	116	99	17	16.80%
CRC STATION	316	267	49	18.27%
FLORIN STATION	229	247	(17)	-7.08%
FRANKLIN STATION	128	121	7	5.51%
FRUITRIDGE STATION	157	120	37	30.96%
GLOBE AVENUE STATION	71	75	(4)	-5.27%
MARCONI/ARCADE STATION	189	158	30	19.15%
MEADOWVIEW STATION	235	215	20	9.26%
ROSEVILLE ROAD STATION	74	67	8	11.78%
ROYAL OAKS STATION	155	161	(5)	-3.40%
ST ROSE OF LIMA PARK STATION	221	199	22	11.14%
SWANSTON STATION	66	57	9	15.50%
Watt/I-80 Station	398	355	42	11.83%
WATT/I-80 WEST STATION	11	12	(1)	-6.69%
<b>GOLD LINE - Rt#507</b>	<b>4,483</b>	<b>5,400</b>	<b>(917)</b>	<b>-16.98%</b>
13TH STREET STATION	155	171	(16)	-9.38%
16TH STREET STATION	436	505	(69)	-13.64%
23RD STREET STATION	81	122	(41)	-33.91%
29TH STREET STATION	360	378	(18)	-4.73%
39TH STREET STATION	66	85	(19)	-22.35%
48TH STREET STATION	48	67	(19)	-28.56%
59TH STREET STATION	53	72	(18)	-25.31%
7TH & CAPITOL STATION	212	256	(44)	-17.20%
7TH & I/COUNTY CENTER STATION	73	87	(14)	-16.32%
8TH & CAPITOL STATION	19	22	(2)	-11.38%
8TH & H STATION	28	25	3	10.30%
8TH & K STATION	36	40	(4)	-10.01%
8TH & O STATION	66	91	(25)	-27.35%
ARCHIVES PLAZA STATION	53	65	(12)	-18.87%

BUTTERFIELD STATION	85	113	(27)	-24.10%
COLLEGE GREENS STATION	229	316	(87)	-27.57%
CORDOVA TOWN CENTER STATION	131	164	(33)	-19.98%
GLENN STATION	27	37	(10)	-26.42%
HAZEL STATION	29	52	(22)	-43.04%
HISTORIC FOLSOM STATION	139	179	(39)	-22.02%
IRON POINT STATION	111	141	(31)	-21.63%
MATHER FIELD/MILLS STATION	412	480	(68)	-14.09%
POWER INN STATION	94	134	(39)	-29.57%
SACRAMENTO VALLEY STATION	207	242	(35)	-14.56%
STARFIRE STATION	90	133	(44)	-32.76%
SUNRISE STATION	242	268	(27)	-10.01%
TIBER STATION	94	97	(3)	-2.93%
UNIVERSITY/65TH STREET STATION	341	401	(61)	-15.15%
WATT/MANLOVE STATION	212	264	(52)	-19.63%
ZINFANDEL STATION	353	391	(38)	-9.83%
<b>Final Total - Boardings</b>	<b>9,103</b>	<b>9,600</b>	<b>(497)</b>	<b>-5.18%</b>

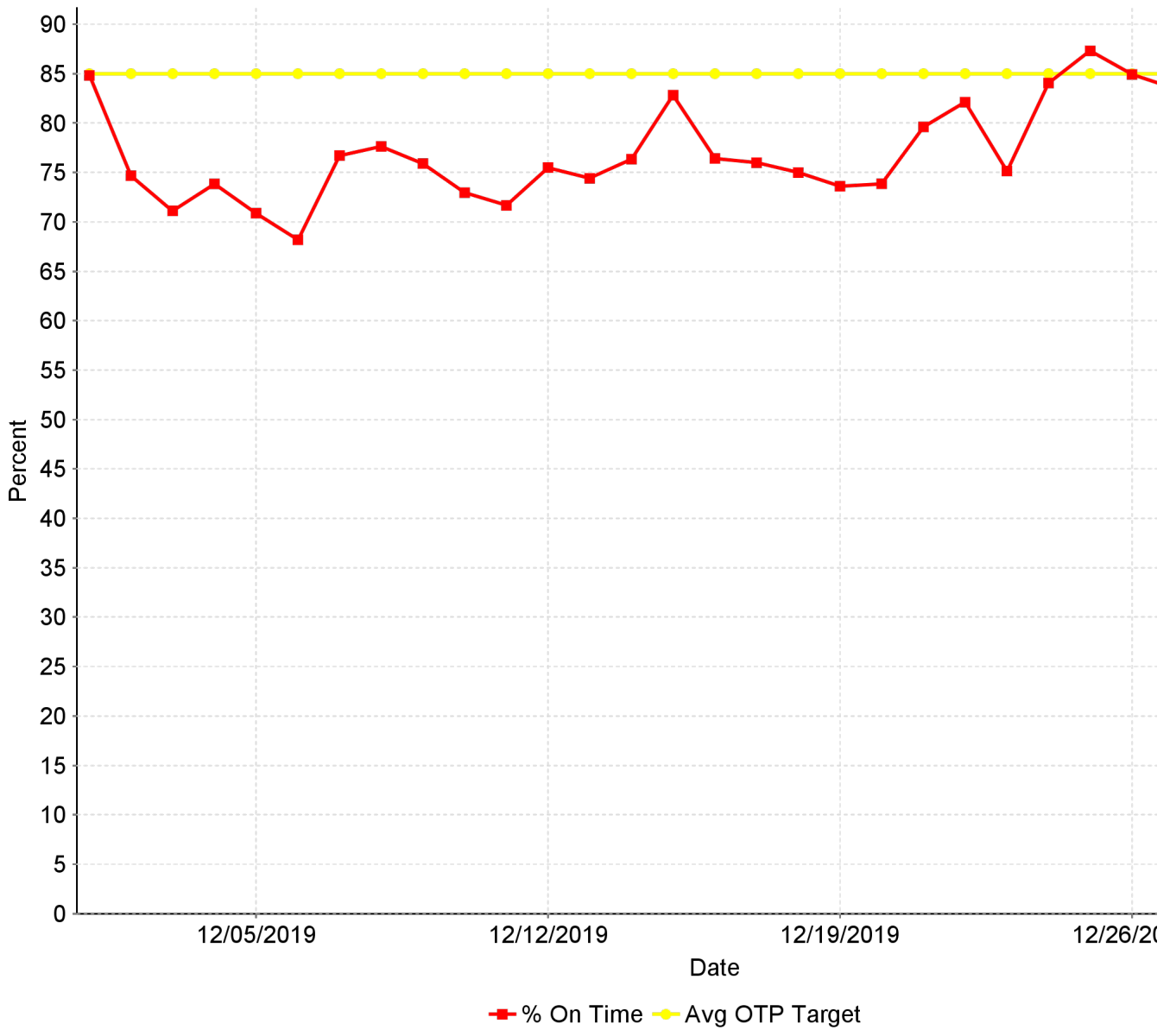
### Average Sunday Alightings by Station by Line

Station Name	Dec19	Dec18	Difference	% Change
<b>BLUE LINE - Rt#533</b>	<b>4,623</b>	<b>4,810</b>	<b>(187)</b>	<b>-3.89%</b>
12TH & I STATION	90	93	(3)	-3.05%
13TH STREET STATION	119	130	(11)	-8.82%
16TH STREET STATION	435	484	(49)	-10.18%
47TH AVENUE STATION	123	129	(6)	-4.77%
4TH AVE/WAYNE HULTGREN STATION	71	79	(8)	-10.59%
7TH & CAPITOL STATION	151	159	(8)	-4.95%
8TH & CAPITOL STATION	71	82	(11)	-13.22%
8TH & O STATION	57	65	(8)	-11.85%
ALKALI FLAT/LA VALENTINA STATION	233	255	(22)	-8.61%
ARCHIVES PLAZA STATION	42	40	2	5.87%
ARDEN/DEL PASO STATION	342	279	63	22.38%
BROADWAY STATION	235	242	(7)	-2.99%
CATHEDRAL SQUARE STATION	217	225	(8)	-3.60%
CENTER PARKWAY STATION	72	73	(0)	-0.22%
CITY COLLEGE STATION	113	115	(2)	-1.64%
CRC STATION	346	319	27	8.36%
EMPLOYEE PLATFORM STATION	30	29	2	5.68%
FLORIN STATION	232	293	(61)	-20.87%
FRANKLIN STATION	102	116	(14)	-12.46%
FRUITRIDGE STATION	156	135	20	15.12%
GLOBE AVENUE STATION	78	76	2	2.01%
MARCONI/ARCADE STATION	212	183	30	16.26%
MEADOWVIEW STATION	219	244	(24)	-10.04%
ROSEVILLE ROAD STATION	68	73	(5)	-6.63%
ROYAL OAKS STATION	155	199	(44)	-22.22%

ST ROSE OF LIMA PARK STATION	166	169	(3)	-1.87%
SWANSTON STATION	66	69	(2)	-3.02%
Watt/I-80 Station	417	447	(30)	-6.75%
WATT/I-80 WEST STATION	6	9	(3)	-37.13%
<b>GOLD LINE - Rt#507</b>	<b>4,480</b>	<b>4,790</b>	<b>(310)</b>	<b>-6.47%</b>
13TH STREET STATION	140	126	14	10.94%
16TH STREET STATION	441	471	(30)	-6.42%
23RD STREET STATION	99	116	(17)	-14.24%
29TH STREET STATION	339	316	23	7.24%
39TH STREET STATION	73	80	(8)	-9.86%
48TH STREET STATION	50	64	(13)	-21.01%
59TH STREET STATION	59	62	(3)	-4.48%
7TH & CAPITOL STATION	14	22	(8)	-36.76%
7TH & I/COUNTY CENTER STATION	9	12	(3)	-24.05%
8TH & CAPITOL STATION	103	114	(11)	-9.56%
8TH & H STATION	59	50	8	16.34%
8TH & K STATION	242	258	(16)	-6.10%
8TH & O STATION	61	69	(8)	-12.19%
ARCHIVES PLAZA STATION	45	64	(18)	-28.77%
BUTTERFIELD STATION	89	97	(8)	-8.00%
COLLEGE GREENS STATION	214	276	(62)	-22.50%
CORDOVA TOWN CENTER STATION	124	135	(11)	-8.26%
GLENN STATION	27	26	1	2.11%
HAZEL STATION	37	45	(8)	-18.09%
HISTORIC FOLSOM STATION	145	162	(17)	-10.40%
IRON POINT STATION	116	124	(8)	-6.08%
MATHER FIELD/MILLS STATION	396	408	(11)	-2.75%
POWER INN STATION	99	120	(20)	-17.02%
SACRAMENTO VALLEY STATIO	186	199	(13)	-6.54%
SACRAMENTO VALLEY STATION	2	1	1	58.29%
ST ROSE OF LIMA PARK STATION	1	1	0	13.07%
STARFIRE STATION	90	106	(17)	-15.64%
SUNRISE STATION	241	265	(24)	-9.20%
TIBER STATION	81	75	6	8.61%
UNIVERSITY/65TH STREET STATION	336	338	(2)	-0.68%
WATT/MANLOVE STATION	213	230	(17)	-7.49%
ZINFANDEL STATION	348	357	(9)	-2.45%
<b>Final Total - Alightings</b>	<b>9,103</b>	<b>9,600</b>	<b>(497)</b>	<b>-5.18%</b>

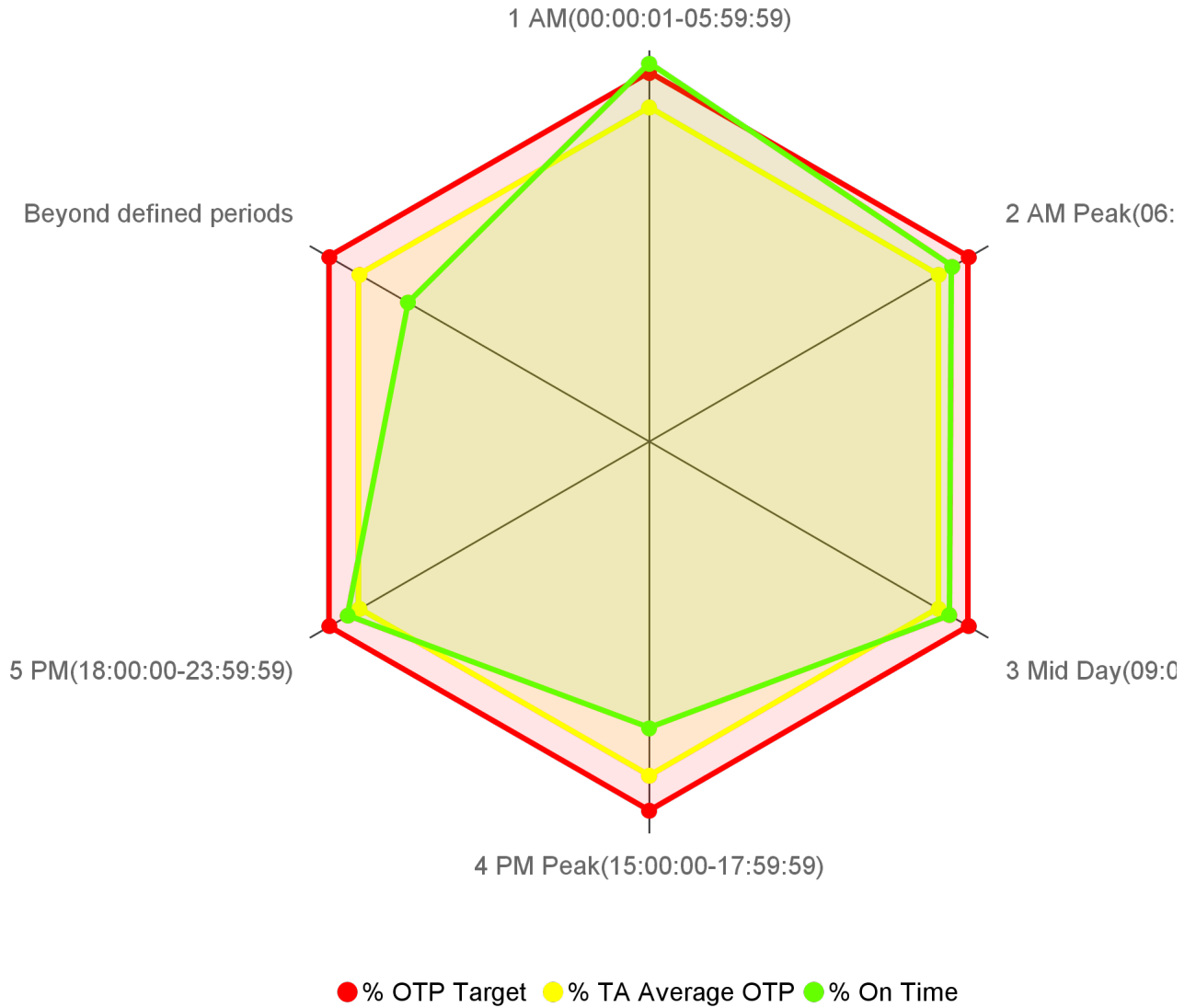
## CR-0105 On Time Performance KPI Trend

On Time Performance



## CR-0104 On Time Performance by Operational Period

On Time Performance by Operational Period

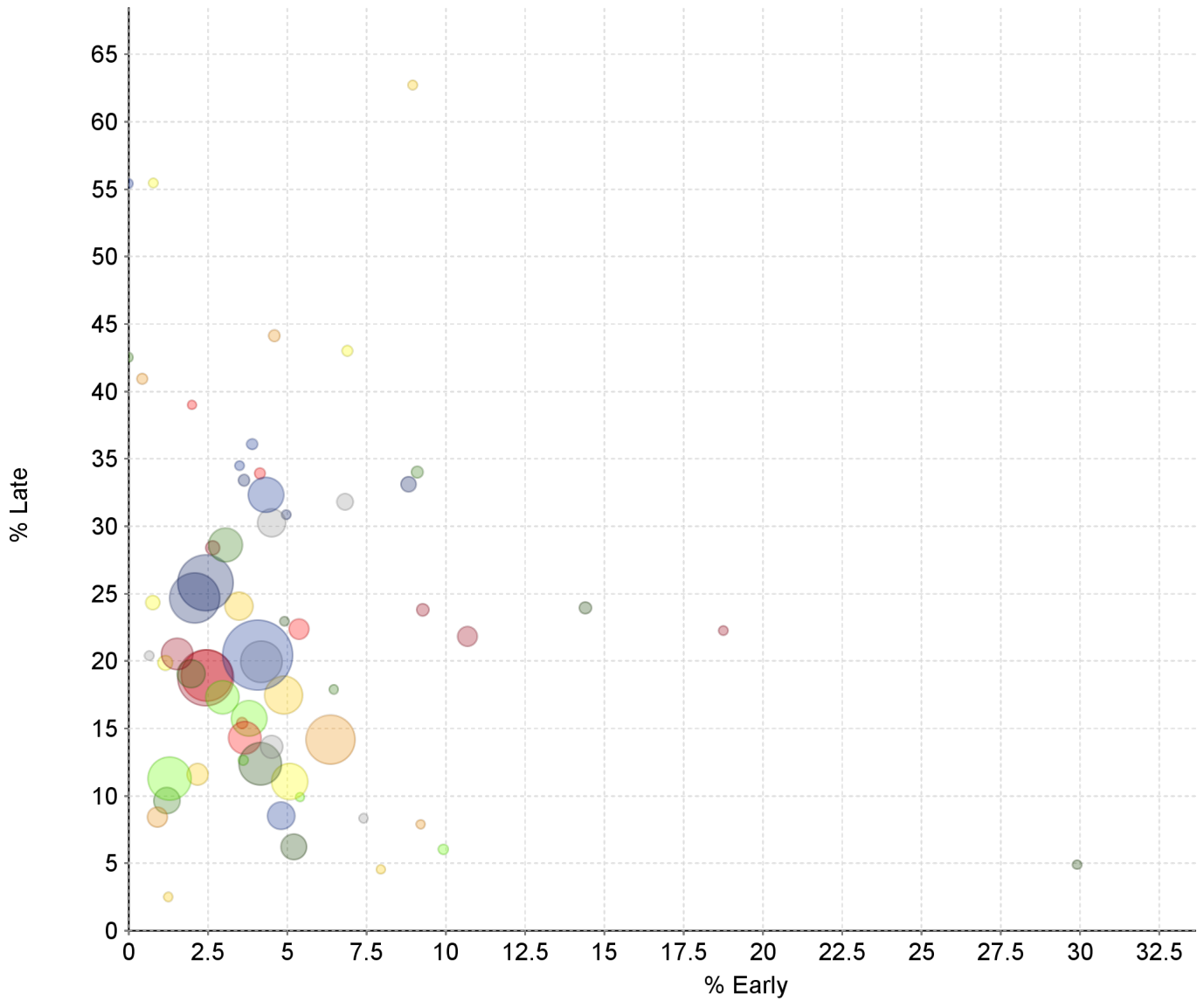


Transit Domain: Bus

Operational Period	% On Time	% TA Average OTP	% OTP Target	# On Time	# Processed
1 AM(00:00:01-05:59:59)	87.13	76.98	85.00	2,532	2,906
2 AM Peak(06:00:00-08:59:59)	80.60	76.98	85.00	46,105	57,204
3 Mid Day(09:00:00-14:59:59)	79.84	76.98	85.00	89,373	111,937
4 PM Peak(15:00:00-17:59:59)	66.00	76.98	85.00	44,732	67,776
5 PM(18:00:00-23:59:59)	80.11	76.98	85.00	49,692	62,030
Beyond defined periods	64.14	76.98	85.00	347	541

### CR-0106 On Time Performance Graph

Shows all Routes together on one chart for easy visual indication of outliers.



Route	% Early	% Late	Timepoints Processed
10 - 10 FSL	5.37	22.37	4,113
20 - 20	0.78	55.47	128
001 - GREENBACK	1.29	11.29	12,686
011 - NATOMAS/LAND PARK	4.33	32.32	9,767
013 - NATOMAS/ARDEN	3.05	28.59	9,201
015 - DEL PASO HEIGHTS	2.18	11.59	4,640
019 - RIO LINDA	4.51	13.64	5,053
021 - SUNRISE	1.53	20.52	8,430
023 - EL CAMINO	2.09	24.68	15,157
025 - MARCONI	4.15	12.36	12,398
026 - FULTON	6.37	14.16	14,782
030 - J STREET	3.66	14.31	8,624
033 - DOS RIOS	1.16	19.87	2,245
038 - TAHOE PARK	2.96	17.32	9,047
051 - STOCKTON/BROADWAY	4.08	20.45	22,503
056 - MEADOWVIEW	1.97	19.06	7,147

Route	% Early	% Late	Timepoints Processed
061 - FRUITRIDGE	4.89	17.47	10,685
062 - FREEPORT	4.19	19.95	12,152
067 - FRANKLIN	2.43	18.74	17,362
068 - OAK PARK	2.43	25.79	17,271
072 - ROSEMONT	5.22	6.21	6,211
075 - MATHER	0.91	8.41	4,160
081 - FLORIN	2.47	18.94	15,716
082 - NORTHROP/MORSE	5.08	11.08	10,076
084 - WATT	3.80	15.73	9,839
086 - GRAND	4.81	8.52	6,795
087 - HOWE	1.21	9.65	6,468
088 - WEST EL CAMINO	3.48	24.08	7,002
093 - HILLSDALE	4.51	30.25	7,118
102 - RIVERSIDE COMMUTER	2.65	28.40	2,000
103 - RIVERSIDE EXPRESS	3.64	33.40	934
105 - ELSIE	4.92	22.95	122
106 - LAND PARK COMMUTER	4.60	44.13	979
107 - SOUTH LAND PARK EXPRESS	4.14	33.91	749
109 - HAZEL EXPRESS	6.90	43.02	609
113 - NORTH MARKET COMMUTER	9.92	6.03	514
129 - ARDEN COMMUTER	3.90	36.08	693
134 - McKINLEY COMMUTER	9.10	34.01	1,088
161 - BELVEDERE	1.25	2.50	80
170 - JIBE EASTSIDE	6.83	31.81	2,694
171 - JIBE WESTSIDE	9.28	23.80	1,315
172 - JIBE CENTRAL	8.82	33.12	2,391
174 - JIBE MIDWEST	14.40	23.95	1,236
175 - RANCHO CORDOVAN - SUNRIDGE PARK	0.43	40.95	696
176 - RANCHO CORDOVAN - ANATOLIA	3.58	15.39	838
177 - RANCHO CORDOVAN - VILLAGES	0.77	24.35	1,947
193 - AUBURN COMMUTER	3.61	12.65	498
205 - Fruitridge Road - Freeport	3.50	34.50	200
206 - 12TH AVE - SUTTERVILLE RD	6.47	17.91	201
210 - LA RIVERA DR	7.95	4.55	88
211 - COLLEGE GREENS	0.66	20.39	152
212 - 14TH AVE - 21ST AVE	18.75	22.27	256
213 - FRUITRIDGE RD - STOCKTON BLVD	4.98	30.85	201
214 - BROADWAY - STOCKTON BLVD	29.90	4.90	204
226 - POCKET RD - RIVERSIDE BLVD	9.21	7.89	76
227 - SOUTH LAND PARK - GREENHAVEN DR	2.00	39.00	100
228 - GLORIA DR - RUSH RIVER DR	35.96	6.14	114



Route	% Early	% Late	Timepoints Processed
246 - MEADOWVIEW - GREENHAVEN	5.41	9.91	111
247 - 21ST ST - FLORIN RD	0.00	55.42	83
248 - MEADOWVIEW - RUSH RIVER	0.00	42.51	207
252 - FREEPORT - FRUITRIDGE - ML KING	8.96	62.74	212
255 - LA RIVIERA - COLLEGE GREENS	7.41	8.33	108
051X - W/X	10.68	21.83	3,922

### CR-0103 Overall On Time

Overall On Time Timepoints

On Time	Early	Late	Timepoints Processed
76.98%	3.73%	19.29%	302,394