

---



**Regional Transit**  
Quarterly Ridership Report  
Period Ending June 30, 2015

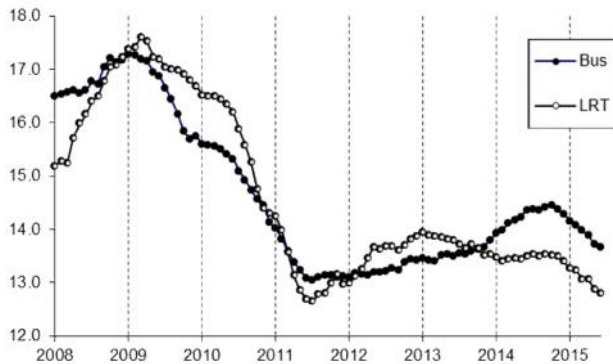
---



**Quarterly Ridership Report  
Period Ending June 30, 2015**
**Systemwide Trends**

For Fiscal Year 2015, total system ridership was 26.5 million, down 1.4 million or 5 percent from last year's total of 27.9 million and down 7.7 percent from RT's budget goal of 28.7 million.

Annual Boardings  
12-Month Rolling Average  
(millions)



Weekday bus ridership began to decline after the beginning of FY 2014, following a trend of increased ridership during FY 2013. Overall bus ridership finished the year at 13.7 million boardings, down 4.9 percent from the previous year. Light rail struggled for most of the year to keep pace with previous year, ultimately regressing from 13.5 million to 12.8 million boardings (down 5.2 percent). The decline in ridership is likely a combination of several factors, including increased ridership during previous year due to the Fix-50 highway project, system reliability issues, and the highly publicized concerns from the community regarding the need for safety and security improvements on the system.

**Gas Prices**

Gas prices dropped significantly in FY 2015. The average per-gallon price for regular unleaded in California was \$3.39 for FY 2015. This was down \$0.49 (-12.7 percent) from \$3.88 for FY 2014. It is very likely that the declining cost for gas negatively impacted ridership in FY 2015.

California Gas Prices  
Per Gallon of Regular Unleaded

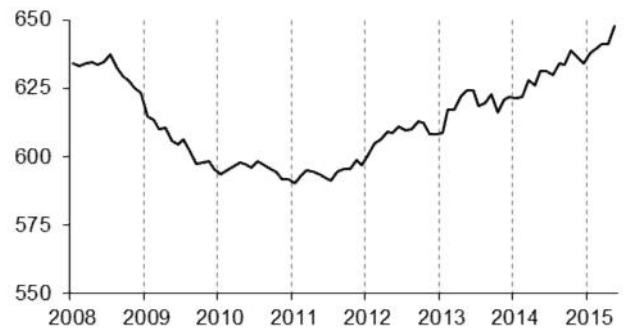


Source: U.S. Energy Information Administration

**Employment Trends**

Employment improved greatly in Sacramento County during FY 2015, finishing the year at 647,800 jobs up, 16,700 (+2.6 percent) from last year's total of 631,100. This improvement now exceeds the pre-recession high of 637,100 jobs. Unfortunately, ridership growth has not followed this increase in jobs, possibly because the growth may be among jobs not located in areas served well by transit or in jobs with alternative schedules, such as during nights and weekends when transit service is more limited or not available.

Total Employment  
Sacramento County  
(thousands)

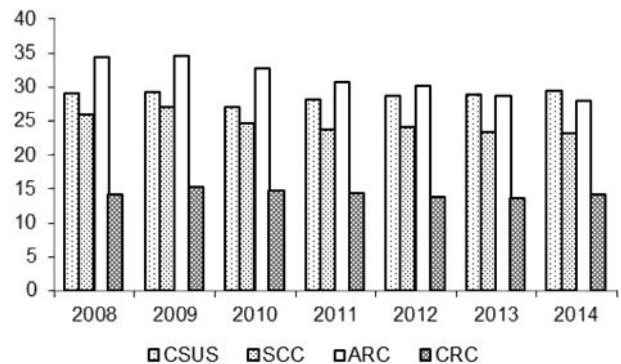


Source: California Employment Development Department

**College Enrollment**

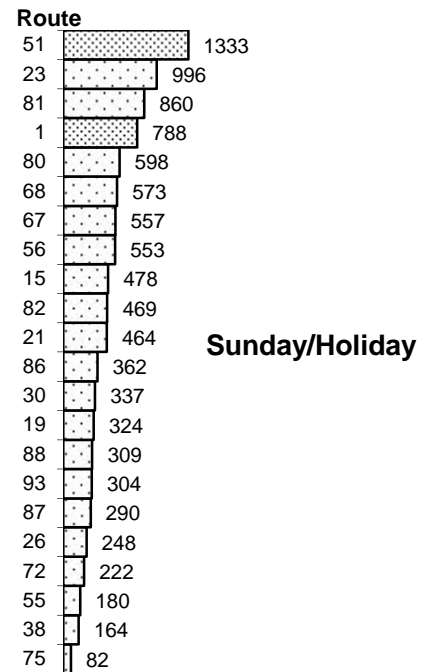
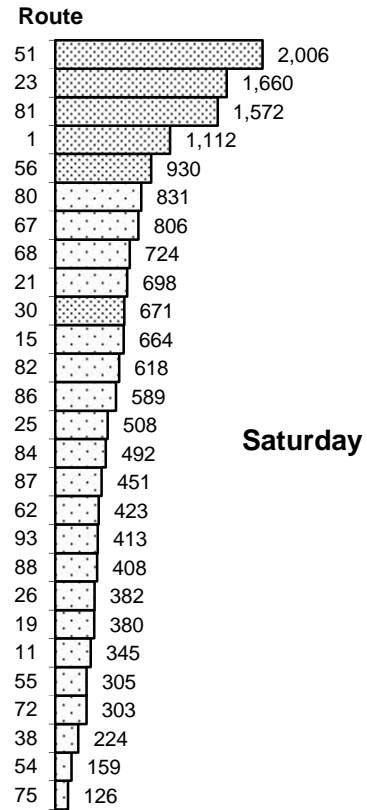
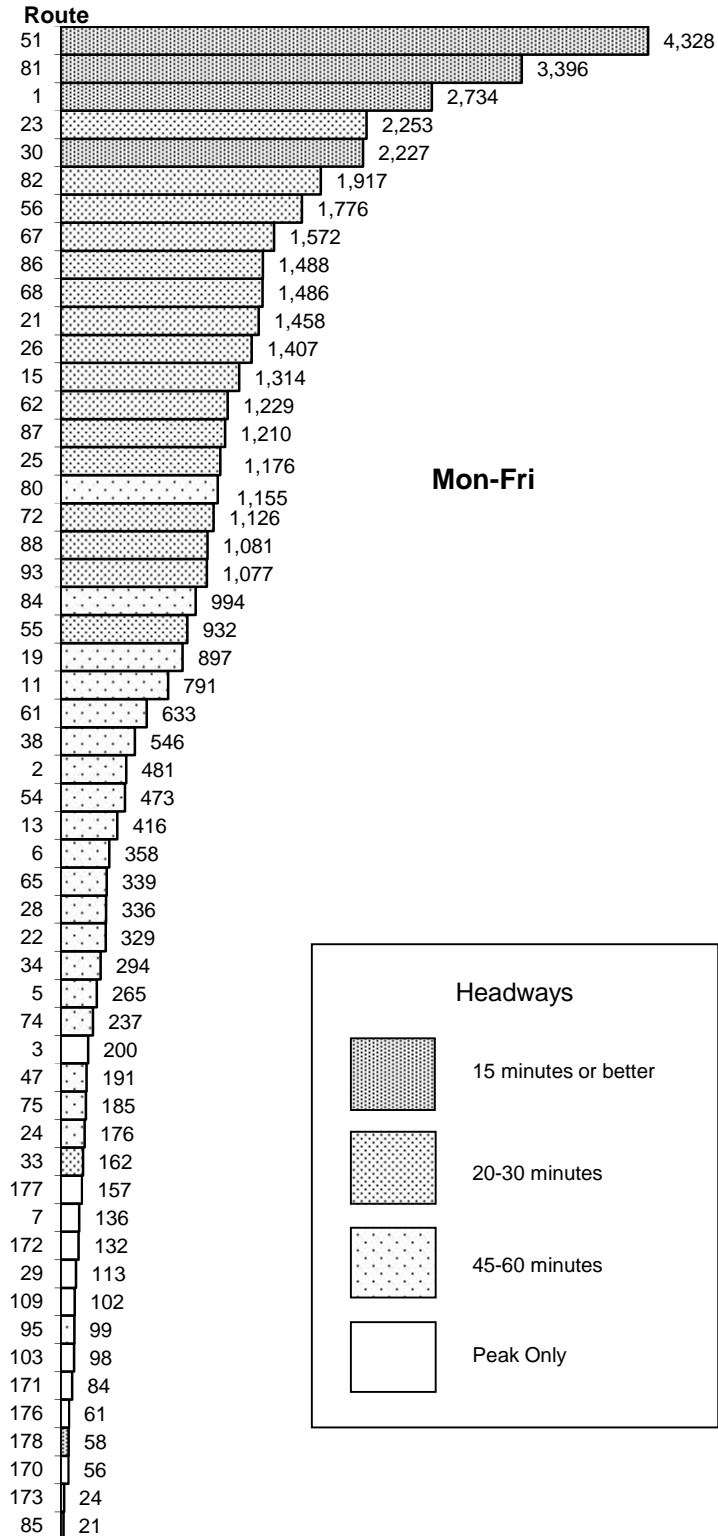
Enrollment at major area colleges increased slightly compared to previous year by 363 (0.4 percent) from 94,224 to 94,587. CSUS and CRC enrollment increased, ARC enrollment decreased and SCC remained nearly the same as previous year. Compared to 2010, enrollment is down by 4,503 (4.5 percent) from 99,090 to 94,587.

Fall Enrollment  
(thousands)



Source: California State University Sacramento,  
Los Rios Community College District

**RT Bus Routes**  
**Average Daily Boardings**



**Performance Monitoring**
**Monday-Friday**

Minimum productivity standards for regular weekday bus routes are **27.0 boardings per service hour**. Low-productivity routes are reviewed by staff for possible corrective action. Newly created routes that do not meet minimum productivity standards within two years are subject to automatic elimination pursuant to RT's route sunset process.

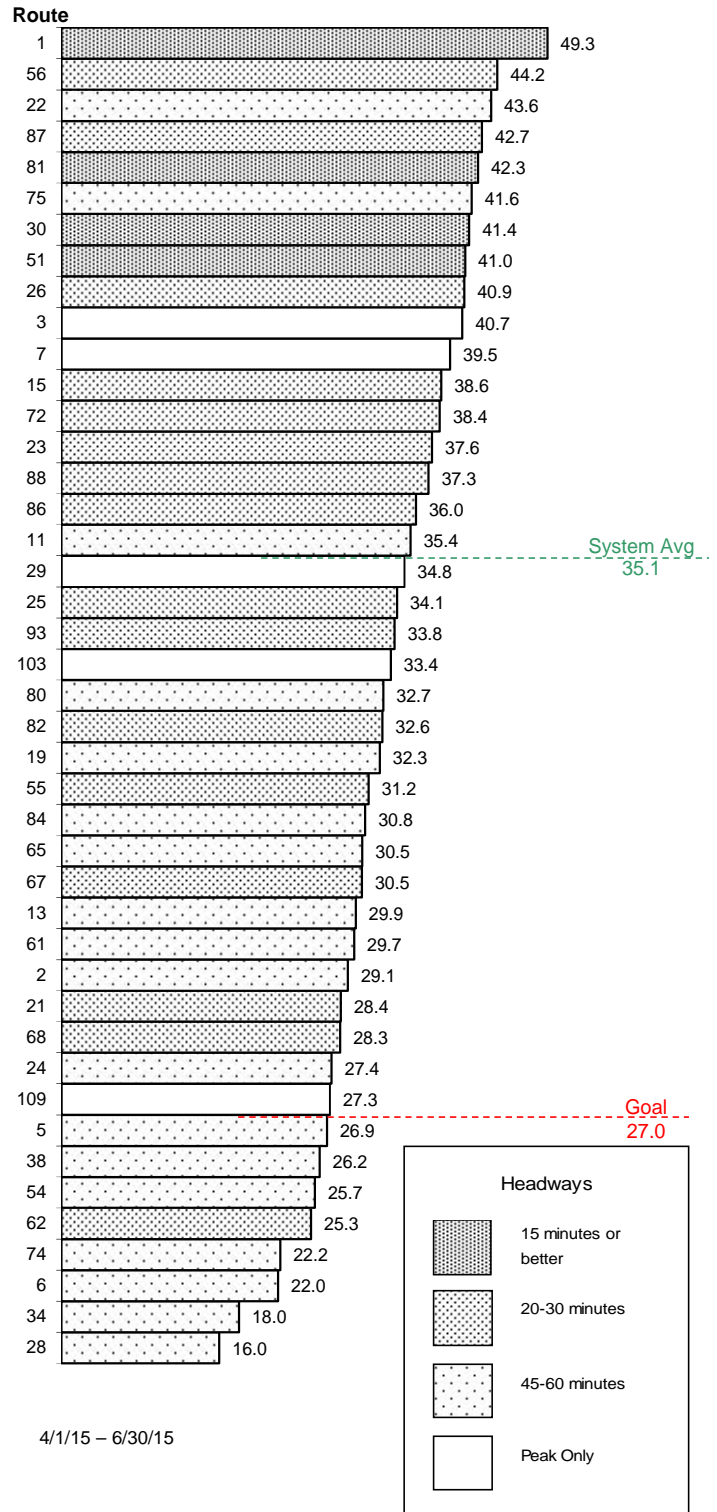
---

**Routes Below Standard**

Route	Name	Quarters
5	Meadowview/Valley Hi	2 qtrs.
6	Land Park	12 qtrs.
28	Fair Oaks/Butterfield	12 qtrs.
34	McKinley	12 qtrs.
38	P/Q Streets	9 qtrs.
54	Center Parkway	1 qtr.
62	Freeport	1 qtr.
74	International	12 qtrs.

**Notes:**

- Note that productivity standards alone do not determine which routes are improved or cut back. Productivity statistics help alert staff to areas that may need closer examination. Corrective actions are based on multiple factors, of which productivity is only one.
- Route 28 continues to remain below standard; however, total ridership on the route has been trending positively since service changes were implemented in April 2015.
- Route 54 has fallen below standards, which may be attributed to an increased number of passenger complaints since the beginning of the calendar year.

**Boardings Per Service Hour**


**Performance Monitoring**
**Saturday**

Minimum productivity standards for Saturday bus routes are **20.0 boardings per service hour**. Low-productivity routes are reviewed by staff for possible corrective action. Newly created routes that do not meet minimum productivity standards within two years are subject to automatic elimination pursuant to RT's route sunset process.

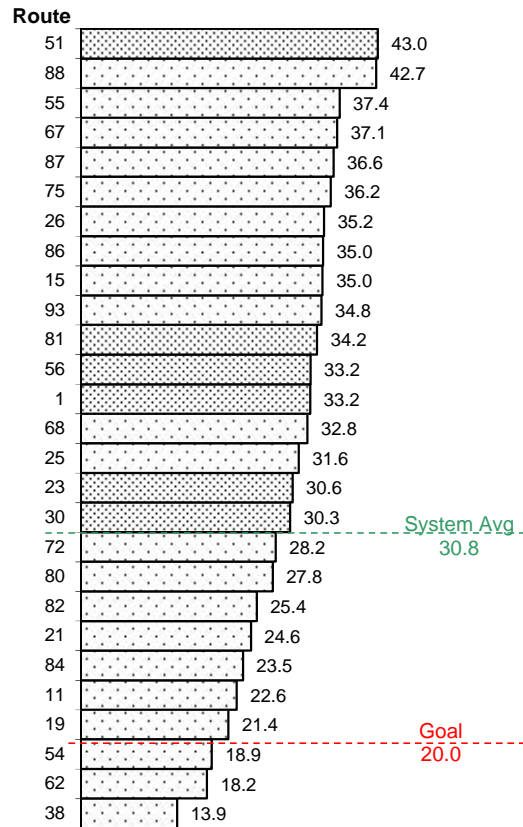
---

**Routes Below Standard**

Route	Name	Quarters
38	P/Q Streets	12 qtrs.
62	Freeport	12 qtrs.
54	Center Parkway	1 qtr.

**Notes:**

- Route 54 has fallen below standards, which may be attributed to an increased number of passenger complaints since the beginning of the calendar year.

**Boardings Per Service Hour**


4/1/15 – 6/30/15

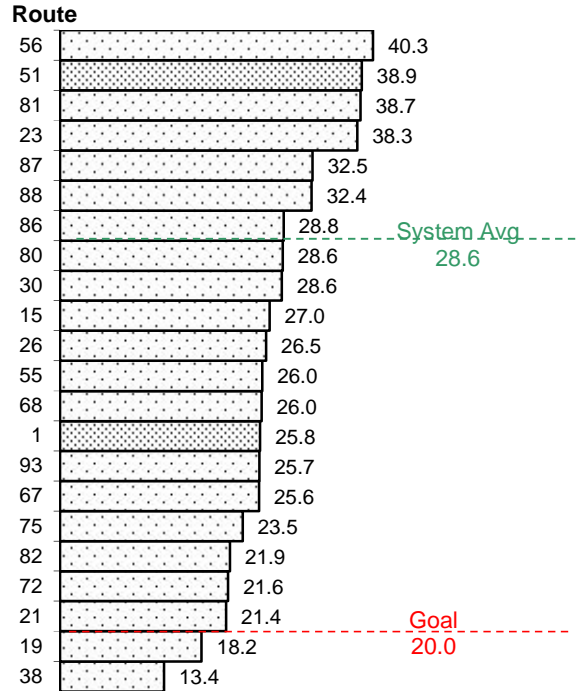
**Performance Monitoring**
**Sunday/Holiday**

Minimum productivity standards for Sunday/Holiday bus routes are **20.0 boardings per service hour**. Low-productivity routes are reviewed by staff for possible corrective action. Newly created routes that do not meet minimum productivity standards within two years are subject to automatic elimination pursuant to RT's route sunset process.

---

**Routes Below Standard**

Route	Name	Quarters
19	Rio Linda	5 qtr.
38	P/Q Streets	12 qtrs.

**Boardings Per Service Hour**


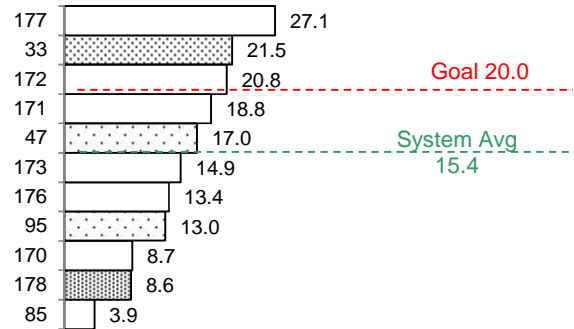
4/1/15 – 6/30/15

**Performance Monitoring**
**Community Bus Service**

Minimum productivity standards for CBS routes are **20.0 boardings per service hour**. CBS routes supported by a third-party subsidy are considered to be meeting standards if the net operating cost does not exceed **\$10.74 per passenger**. Low-productivity routes are reviewed by staff for possible corrective action. Newly created routes that do not meet minimum productivity standards within two years are subject to automatic elimination pursuant to RT's route sunset process.

---

Route	Name	Contract	Quarters
47	Phoenix Park	No	5 qtr.
85	McClellan Shuttle	Yes	12 qtrs.
95	Citrus Hts. - Antelope Rd	No	11 qtrs.
170	Natomas Flyer Eastside	Yes	6 qtrs.
171	Natomas Flyer Westside	Yes	5 qtr.
173	Natomas Flyer Square	Yes	5 qtr.
176	Cordovan - Anatolia	Yes	12 qtrs.
178	Granite Shuttle	Yes	12 qtrs.

**Boardings Per Revenue Hour**
**Routes**


4/1/15 – 6/30/15

**Notes:**

- Routes 85, 170-173, and 176-178 are operated according to agreements with outside parties.
- Based on level-of-service commitments to the City of Citrus Heights and lack of superior cost-constrained alternatives, Route 95 was exempted from the sunset process in December 2014. Minor changes to Route 95 were implemented in April 2015.



**Weekday Bus and CBS Routes**

On-time performance is measured at time points, which are major stops shown on the public schedule (usually 4-6 per route).

A bus is considered on-time if it leaves its time point 0-5:59 minutes late. On-time performance indicates the percent of time points where the bus was on-time according to this definition.

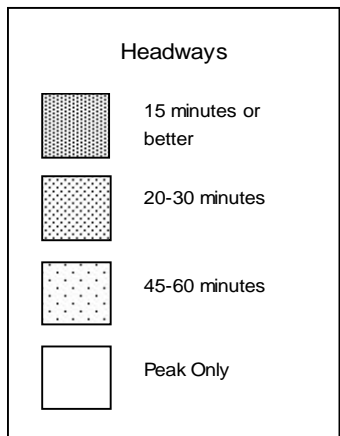
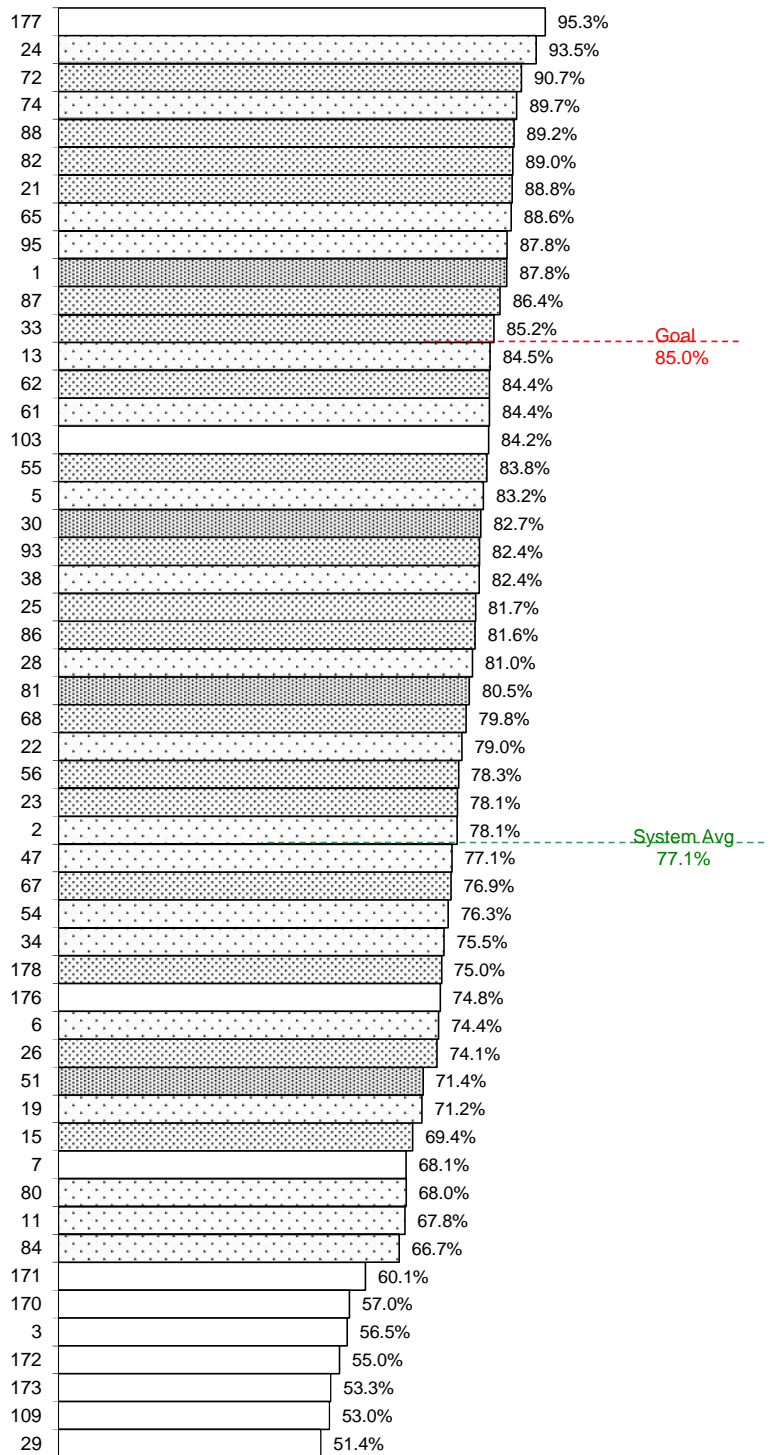
---

Weekday on-time performance improved from 76.6 to 77.1 percent compared to last quarter but was down compared to 78.9 percent for the same quarter last year.

Quarter	2014	2015
Q1	78.2%	76.6%
Q2	78.9%	77.1%
Q3	77.9%	
Q4	76.7%	

**Notes:**

- Route 5 improved from 72% last quarter to 83% this quarter.
- Route 7 decreased from 85% last quarter to 68% this quarter.


**On-Time Performance**


**Saturday Bus Routes**

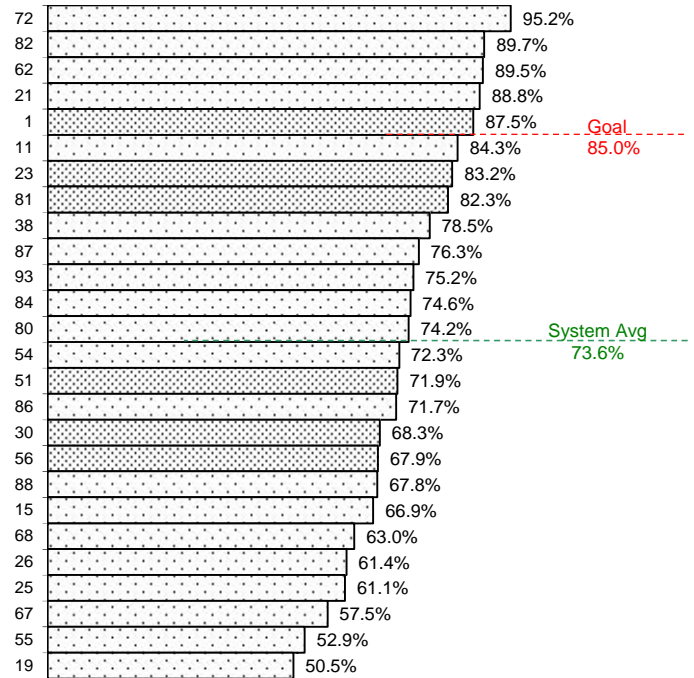
On-time performance is measured at time points, which are major stops shown on the public schedule (usually 4-6 per route).

A bus is considered on-time if it leaves its time point 0-5:59 minutes late. On-time performance indicates the percent of time points where the bus was on-time according to this definition.

---

Saturdays continued to be RT's most difficult day for on-time performance. System wide on-time performance increased from 71.4 to 73.6 percent compared to last quarter and was also up compared to 72.1 percent for the same quarter last year.

Quarter	2014	2015
Q1	74.4%	71.4%
Q2	72.1%	73.6%
Q3	73.2%	
Q4	71.9%	

**On-Time Performance**


4/1/15 – 6/30/15

**Notes:**

- Route 93 increased from 65% on-time last quarter to 75% on-time this quarter.
- Route 19 has had long-term schedule adherence problems on Saturdays; however, on-time performance increased from 41% last quarter to 50% this quarter.

### Sunday/Holiday Bus Routes

On-time performance is measured at time points, which are major stops along the route and shown on the public schedule (usually 4-6 per route).

A bus is considered on-time if it leaves its time point 0-5:59 minutes late. On-time performance indicates the percent of time points where the bus was on-time according to this definition.

---

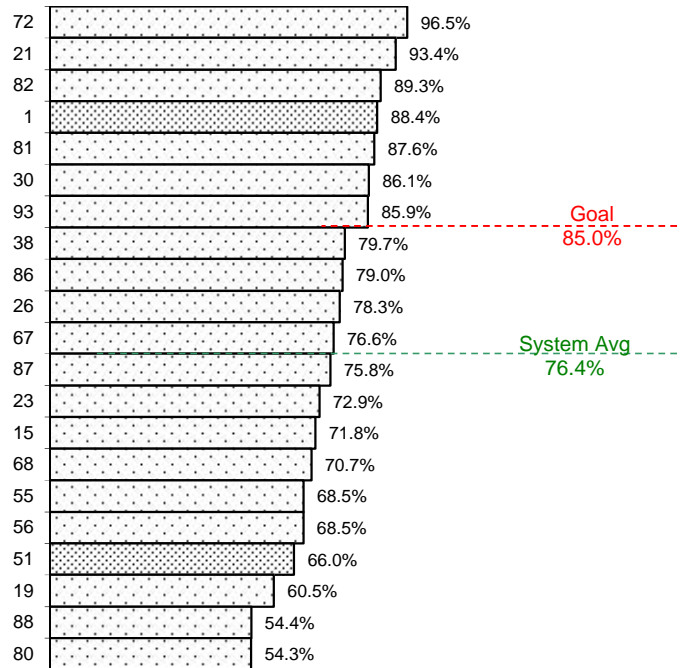
Sunday/Holiday on-time performance was 76.4 percent, down from last quarter, and down slightly from the same quarter last year.

Quarter	2014	2015
Q1	79.1%	78.9%
Q2	77.3%	76.4%
Q3	78.7%	
Q4	76.7%	

**Notes:**

- Route 15 decreased from 84% to 72%.
- Route 88 decreased from 70% to 54%.
- Route 80 decreased from 64% to 54%.

### On-Time Performance



4/1/15 – 6/30/15

### Light Rail On-Time Departures

Light rail on-time performance is measured at trip start points. A one-way trip is considered on-time if it departs 0-5 minutes late. The goal is 97.0 percent on-time departures.

Blue Line on-time performance decreased to 97.8 percent. Gold Line was slightly lower at 98.3 percent. Green Line decreased to 95.9 percent.

	Blue	Gold	Green
2014-Q1	98.9%	99.1%	98.9%
2014-Q2	98.3%	99.1%	97.7%
2014-Q3	98.8%	99.1%	99.6%
2014-Q4	98.2%	98.7%	99.2%
2015-Q1	98.0%	98.6%	97.9%
<b>2015-Q2</b>	<b>97.82%</b>	<b>98.27%</b>	<b>95.85%</b>



# Weekday Bus Ridership

4/1/15 - 6/30/15

Route	Name	Boardings Per Day	Trips Per Day	Serv Hrs Per Day	Rev Hrs Per Day	(Goal = 27)	Full Cost Per Psgr	Net Cost Per Psgr	Farebox Recovery	Below Standards
						Psg'r Per Serv Hr				
56	Pocket-C.R.C.	1,776	66	40.2	50.6	44.2	\$4.03	\$2.94	27%	
87	Howe	1,210	55	28.3	41.5	42.7	\$4.85	\$3.76	23%	
81	Florin-65th Street	3,396	119	80.3	104.3	42.3	\$4.35	\$3.25	25%	
75	Mather Field	185	14	4.4	10.0	41.6	\$7.69	\$6.60	14%	
30	J Street (DASH)	2,227	116	53.7	84.5	41.5	\$5.37	\$4.28	20%	
1	Greenback	2,734	121	66.6	100.1	41.0	\$5.18	\$4.09	21%	
51	Broadway-Stockton	4,328	143	105.6	132.2	41.0	\$4.32	\$3.23	25%	
7	Pocket Express	136	6	3.4	4.1	40.0	\$4.26	\$3.17	26%	
3	Riverside Express	200	8	5.1	5.3	39.5	\$3.77	\$2.68	29%	
72	Rosemont-Lincoln Village	1,126	63	29.3	44.1	38.4	\$5.55	\$4.45	20%	
26	Fulton	1,407	52	36.8	51.4	38.2	\$5.17	\$4.07	21%	
88	West El Camino	1,081	59	29.0	39.1	37.3	\$5.12	\$4.02	21%	
86	San Juan-Silver Eagle	1,488	61	41.4	57.1	36.0	\$5.43	\$4.34	20%	
22	Arden	329	28	9.2	13.4	35.7	\$5.75	\$4.65	19%	
15	Rio Linda Blvd-O Street	1,314	56	37.7	53.2	34.9	\$5.73	\$4.64	19%	
23	El Camino	2,253	65	64.8	84.2	34.8	\$5.29	\$4.19	21%	
93	Hillsdale	1,077	55	31.8	48.2	33.8	\$6.33	\$5.24	17%	
103	Auburn Blvd	98	8	2.9	4.2	33.4	\$6.11	\$5.02	18%	
29	Arden-California Avenue	113	4	3.4	3.9	33.2	\$4.86	\$3.77	23%	
80	Watt-Elkhorn	1,155	32	35.4	40.8	32.7	\$5.00	\$3.90	22%	
82	Howe-65th Street	1,917	66	58.8	80.3	32.6	\$5.93	\$4.84	18%	
11	Truxel Road	791	43	24.3	31.5	32.6	\$5.64	\$4.55	19%	
25	Marconi	1,176	55	36.3	53.6	32.4	\$6.45	\$5.36	17%	
55	Scottsdale	932	52	29.9	38.2	31.2	\$5.81	\$4.71	19%	
84	Watt Avenue-North Highlands	994	28	32.2	38.2	30.8	\$5.43	\$4.34	20%	
65	Franklin South	339	28	11.1	26.9	30.5	\$11.22	\$10.12	10%	
67	Franklin	1,572	58	51.6	64.3	30.5	\$5.79	\$4.69	19%	
61	Fruitridge	633	31	21.3	30.2	29.7	\$6.75	\$5.66	16%	
19	Rio Linda	897	29	30.4	40.6	29.6	\$6.40	\$5.30	17%	
68	44th Street	1,486	59	52.5	66.4	28.3	\$6.32	\$5.23	17%	
2	Riverside	481	26	17.3	25.3	27.8	\$7.45	\$6.36	15%	
21	Sunrise	1,458	70	53.3	67.7	27.4	\$6.57	\$5.48	17%	
13	Northgate	416	31	15.2	20.0	27.4	\$6.78	\$5.69	16%	
109	Hazel Express	102	4	3.7	3.8	27.3	\$5.31	\$4.21	21%	
38	P/Q Streets	546	29	20.8	28.0	26.2	\$7.26	\$6.16	15%	X
54	Center Parkway	473	31	18.4	26.2	25.7	\$7.85	\$6.75	14%	X
62	Freeport	1,229	60	48.5	61.3	25.3	\$7.06	\$5.96	16%	X
24	Madison-Greenback	176	27	7.1	13.0	24.7	\$10.42	\$9.33	11%	X
5	Meadowview-Valley Hi	265	31	11.4	16.0	23.3	\$8.51	\$7.42	13%	X
74	International	237	29	10.7	17.9	22.2	\$10.72	\$9.63	10%	X
6	Land Park	358	27	17.6	25.0	20.4	\$9.86	\$8.76	11%	X
34	McKinley	294	27	16.4	26.3	18.0	\$12.63	\$11.54	9%	X
28	Fair Oaks-Butterfield	336	32	23.4	30.7	14.4	\$12.95	\$11.86	8%	X
TOTAL		44,744	2,004	1,321	1,803	33.9				



# Saturday Bus Ridership

4/1/15 - 6/30/15

Route	Name	Boardings	Trips	Serv Hrs	Rev Hrs	(Goal = 20) Psgr Per	Full Cost	Net Cost	Farebox	Below
		Per Day	Per Day	Per Day	Per Day	Serv Hr				
51	Broadway-Stockton	2,006	68	46.7	64.1	43.0	\$4.52	\$3.43	24%	
88	West El Camino	408	26	9.5	14.9	42.8	\$5.16	\$4.07	21%	
55	Scottsdale	305	19	8.2	12.0	37.5	\$5.54	\$4.45	20%	
93	Hillsdale	806	28	21.7	27.8	37.1	\$4.87	\$3.78	22%	
87	Howe	451	29	12.3	14.4	36.6	\$4.52	\$3.42	24%	
26	Fulton	126	11	3.5	8.3	36.2	\$9.26	\$8.17	12%	
67	Franklin	382	21	10.9	14.3	35.2	\$5.28	\$4.19	21%	
15	Rio Linda Blvd-O Street	589	28	16.8	22.0	35.1	\$5.29	\$4.19	21%	
81	Florin-65th Street	664	29	19.0	22.3	35.0	\$4.76	\$3.66	23%	
75	Mather Field	413	22	11.9	14.9	34.8	\$5.11	\$4.02	21%	
86	San Juan-Silver Eagle	1,572	60	46.0	59.0	34.2	\$5.31	\$4.22	21%	
1	Greenback	930	55	28.0	37.1	33.3	\$5.65	\$4.55	19%	
56	Pocket-C.R.C.	1,112	66	33.5	45.4	33.2	\$5.79	\$4.69	19%	
72	Rosemont-Lincoln Village	724	28	22.1	28.1	32.8	\$5.50	\$4.40	20%	
68	44th Street	508	21	16.1	20.5	31.6	\$5.72	\$4.62	19%	
25	Marconi	1,660	53	54.2	63.9	30.6	\$5.45	\$4.35	20%	
23	El Camino	671	53	22.2	28.9	30.3	\$6.09	\$5.00	18%	
30	J Street (DASH)	303	23	10.7	14.1	28.2	\$6.57	\$5.47	17%	
80	Watt-Elkhorn	831	29	30.0	36.5	27.8	\$6.21	\$5.11	18%	
82	Howe-65th Street	618	31	24.3	30.7	25.5	\$7.03	\$5.93	16%	
21	Sunrise	698	42	28.4	45.6	24.6	\$9.25	\$8.15	12%	
84	Watt Avenue-North Highlands	492	20	21.0	24.8	23.5	\$7.13	\$6.04	15%	
11	Truxel Road	345	26	15.3	21.3	22.6	\$8.73	\$7.63	13%	
19	Rio Linda	380	20	17.8	21.2	21.4	\$7.92	\$6.82	14%	
54	Center Parkway	159	24	8.4	12.7	18.9	\$11.32	\$10.22	10%	X
62	Freeport	423	29	23.2	32.8	18.2	\$10.97	\$9.88	10%	X
38	P/Q Streets	224	25	16.2	19.3	13.9	\$12.16	\$11.07	9%	X
TOTAL		17,798	886	577	757	30.8				

Costing factors and average fare assumptions from FY 2015 operating budget



## Sun/Hol Bus Ridership

4/1/15 - 6/30/15

Route	Name	Boardings	Trips	Serv Hrs	Rev Hrs	(Goal = 20) Psgr Per	Full Cost	Net Cost	Farebox	Below
		Per Day	Per Day	Per Day	Per Day	Serv Hr				
56	Pocket-C.R.C.	553	27	13.7	19.0	40.3	\$4.86	\$3.77	23%	
51	Broadway-Stockton	1,333	50	34.3	41.9	38.9	\$4.45	\$3.35	25%	
81	Florin-65th Street	860	29	22.2	28.5	38.7	\$4.69	\$3.59	23%	
23	El Camino	996	28	26.0	39.3	38.3	\$5.59	\$4.49	20%	
87	Howe	290	21	8.9	10.4	32.5	\$5.08	\$3.99	22%	
88	West El Camino	309	26	9.5	12.9	32.4	\$5.92	\$4.83	18%	
86	San Juan-Silver Eagle	362	21	12.6	15.9	28.8	\$6.22	\$5.13	18%	
80	Watt-Elkhorn	598	23	20.9	24.5	28.7	\$5.79	\$4.70	19%	
30	J Street (DASH)	337	28	11.8	14.8	28.6	\$6.20	\$5.11	18%	
15	Rio Linda Blvd-O Street	478	26	17.7	22.7	27.0	\$6.70	\$5.61	16%	
26	Fulton	248	20	9.3	11.1	26.5	\$6.32	\$5.22	17%	
55	Scottsdale	180	16	6.9	10.9	26.0	\$8.58	\$7.48	13%	
68	44th Street	573	28	22.1	28.1	26.0	\$6.94	\$5.85	16%	
1	Greenback	788	63	30.6	44.3	25.8	\$7.96	\$6.87	14%	
93	Hillsdale	304	22	11.9	14.8	25.7	\$6.87	\$5.77	16%	
67	Franklin	557	28	21.7	27.8	25.6	\$7.06	\$5.96	16%	
75	Mather Field	82	11	3.5	7.8	23.5	\$13.40	\$12.31	8%	
82	Howe-65th Street	469	28	21.4	27.5	21.9	\$8.30	\$7.20	13%	
72	Rosemont-Lincoln Village	222	22	10.3	13.4	21.7	\$8.56	\$7.46	13%	
21	Sunrise	464	30	21.7	32.1	21.4	\$9.80	\$8.70	11%	
19	Rio Linda	324	20	17.8	20.3	18.2	\$8.88	\$7.79	12%	X
38	P/Q Streets	164	20	12.3	14.9	13.4	\$12.84	\$11.74	9%	X
TOTAL		10,492	587	367	483	28.6				

Costing factors and average fare assumptions from FY 2015 operating budget

**Quarterly Ridership Report  
Period Ending June 30, 2015**
**CBS Ridership**
**4/1/15 - 6/30/15**

Route	Name	Boardings	Trips	Serv Hrs	Rev Hrs	Psg Per	Full Cost	(Goal < \$10.73) Net Cost	Farebox	Contract	Below
		Per Day	Per Day	Per Day	Per Day	Serv Hr	Per Psgr	Per Psgr	Recovery	Service	Standards
177	Rancho Cordovan	157	58	5.8	7.1	27.1	\$8.03	\$4.02	50%	X	
172	Central Flyer	132	8	6.3	7.3	20.8	\$9.76	\$5.09	48%	X	
171	Westside Flyer	84	6	4.5	4.9	18.8	\$10.35	\$5.31	49%	X	
173	Square Flyer	24	2	1.6	1.6	14.9	\$11.89	\$5.81	51%	X	
33	Dos Rios	162	60	7.5	11.5	21.5	\$12.57	\$11.47	9%		X
47	Phoenix Park	191	24	11.2	13.5	17.0	\$12.58	\$11.48	9%		X
176	Cordovan - Anatolia	61	18	4.5	6.5	13.5	\$19.07	\$12.13	36%	X	X
170	Eastside Flyer	125	8	6.5	7.0	8.7	\$21.99	\$17.05	22%	X	X
95	Citrus Heights-Antelope Rd	99	23	7.7	10.8	13.0	\$19.21	\$18.11	6%		X
178	Granite Shuttle	58	41	6.8	11.6	8.6	\$35.17	\$29.12	17%	X	X
85	McClellan Shuttle	21	14	5.5	6.4	3.9	\$53.87	\$52.78	2%	X	X
TOTAL		1,114	262	68	88	16.4					




Costing factors and average fare assumptions from FY 2015 operating budget  
 Routes 85, 95 170, 171, 172, 173, 176, 177, and 178 are operated according to service agreements  
 Contract revenue has been treated as fare revenue, reducing net cost and increasing fare box recovery  
 List excludes CityRide dial-a-ride service launched 10/29/12

Quarterly Ridership Report  
 Period Ending June 30, 2015

**Trend Analysis**

Apr. 1 - Jun. 30

## Average Daily Boardings

		Boardings Per Day				Vehicle Service Hours Per Day				Boardings / Serv Hour	
		FY 2015	FY 2014	Variance	%	FY 2015	FY 2014	Variance	%	FY 2015	FY 2014
<b>BUS</b> 	Mon-Fri	44,744	46,796	-2,052	-4.4%	1,321	1,317	4	0.3%	33.9	35.5
	Saturday	17,798	18,993	-1,195	-6.3%	577	577	0	0.0%	30.8	32.9
	Sun/Hol	10,492	11,156	-665	-6.0%	367	367	0	0.0%	28.6	30.4
	CBS (Mon-Fri)	1,189	1,237	-47	-3.8%	68	68	0	0.0%	17.5	18.2
<b>RAIL</b> 	Mon-Fri	41,744	43,762	-2,018	-4.6%	263	263	0	0.0%	158.8	166.5
	Saturday	16,181	19,321	-3,140	-16.2%	159	159	0	0.0%	101.8	121.6
	Sun/Hol	12,418	12,961	-543	-4.2%	138	138	0	0.0%	89.7	93.7
<b>DAR</b> 	ADA Paratransit	964	902	62	6.8%	638	588	50	8.4%	1.51	1.53
	CityRide	39	34	5	14.2%	15.4	15.1	0.3	2.0%	2.53	2.26
		Boardings Per Day				Revenue Hours Per Day				Boardings / Rev Hour	
		FY 2015	FY 2014	Variance	%	FY 2015	FY 2014	Variance	%	FY 2015	FY 2014
<b>Blue Line</b>	Mon-Fri	20,326	21,787	-1,461	-6.7%	117	117	0	0.0%	174.1	186.6
	Saturday	7,771	10,844	-3,073	-28.3%	75	75	0	0.0%	104.2	145.4
	Sun/Hol	6,829	6,823	6	0.1%	65	65	0	0.0%	105.8	105.7
<b>Gold Line</b>	Mon-Fri	20,954	21,602	-648	-3.0%	131	131	0	0.0%	159.6	164.6
	Saturday	8,410	8,477	-67	-0.8%	84	84	0	0.0%	99.7	100.5
	Sun/Hol	5,589	6,138	-549	-8.9%	74	74	0	0.0%	75.7	83.1
<b>Green Line</b>	Mon-Fri	464	373	91	24.4%	15	15	0	0.0%	31.3	25.2

Service Hours = Running time only (first to last time point)

Revenue Hours = Service Hours plus breaks (layover/recovery)

Deadhead Hours = Travel to/from garage and in between routes if not in service

Total Vehicle Hours = Revenue hours plus deadhead

Bus vehicle hours are stated in terms of service hours per day

Rail hours are stated in terms of revenue hours

Dial-a-Ride (DAR) service hours are time spent in service or available for service (excludes scheduled lunch breaks and other out-of-service time).



**Quarterly Ridership Report  
Period Ending June 30, 2015**
**Trend Analysis**
**Bus - Weekdays**

Q2 - Apr/May/June

Route	Name	Boardings Per Day				Vehicle Service Hours Per Day				Boardings/Serv Hr	
		FY 2015	FY 2014	Change	% Change	FY 2015	FY 2014	Change	% Change	FY 2015	FY 2014
1	Greenback	2,734	2,681	53	2.0%	66.6	66.6	0.0	0.0%	41.0	40.2
2	Riverside	481	500	-18	-3.7%	17.3	17.3	0.0	0.0%	27.8	28.9
3	Riverside Express	200	188	12	6.6%	5.1	5.1	0.0	0.0%	39.5	37.0
5	Meadowview-Valley Hi	265	297	-31	-10.5%	11.4	11.4	0.0	0.0%	23.3	26.1
6	Land Park	358	394	-36	-9.1%	17.6	17.6	0.0	0.0%	20.4	22.4
7	Pocket Express	136	139	-3	-1.9%	3.4	3.4	0.0	0.0%	40.0	40.8
11	Truxel Road	791	770	21	2.8%	24.3	23.1	1.2	5.1%	32.6	33.3
13	Northgate	416	423	-7	-1.6%	15.2	16.2	-1.0	-6.0%	27.4	26.1
15	Rio Linda Blvd-O Street	1,314	1,416	-102	-7.2%	37.7	37.7	0.0	0.0%	34.9	37.6
19	Rio Linda	897	914	-17	-1.8%	30.4	30.4	0.0	0.0%	29.6	30.1
21	Sunrise	1,458	1,523	-64	-4.2%	53.3	53.3	0.0	0.0%	27.4	28.6
22	Arden	329	365	-35	-9.7%	9.2	9.2	0.0	0.0%	35.7	39.5
23	El Camino	2,253	2,386	-133	-5.6%	64.8	63.8	0.9	1.5%	34.8	37.4
24	Madison-Greenback	176	184	-8	-4.2%	7.1	7.1	0.0	0.0%	24.7	25.8
25	Marconi	1,176	1,260	-84	-6.7%	36.3	36.3	0.0	0.0%	32.4	34.8
26	Fulton	1,407	1,448	-41	-2.9%	36.8	36.8	0.0	0.0%	38.2	39.3
28	Fair Oaks-Butterfield	336	265	71	26.9%	23.4	18.9	4.4	23.5%	14.4	14.0
29	Arden-California Avenue	113	133	-20	-15.0%	3.4	3.4	0.0	0.0%	33.2	39.1
30	J Street (DASH)	2,227	2,246	-19	-0.8%	53.7	53.7	0.0	0.0%	41.5	41.8
34	McKinley	294	292	3	0.9%	16.4	16.4	0.0	0.0%	18.0	17.9
38	P/Q Streets	546	579	-33	-5.7%	20.8	22.0	-1.2	-5.2%	26.2	26.3
51	Broadway-Stockton	4,328	4,626	-298	-6.4%	105.6	105.6	0.0	0.0%	41.0	43.8
54	Center Parkway	473	575	-101	-17.7%	18.4	18.4	0.0	0.0%	25.7	31.2
55	Scottsdale	932	860	72	8.4%	29.9	29.9	0.0	0.0%	31.2	28.8
56	Pocket-C.R.C.	1,776	2,014	-238	-11.8%	40.2	40.2	0.0	0.0%	44.2	50.2
61	Fruitridge	633	650	-17	-2.6%	21.3	22.0	-0.7	-3.0%	29.7	29.6
62	Freeport	1,229	1,293	-64	-4.9%	48.5	48.5	0.0	0.0%	25.3	26.7
65	Franklin South	339	397	-58	-14.7%	11.1	11.1	0.0	0.0%	30.5	35.8
67	Franklin	1,572	1,554	19	1.2%	51.6	51.6	0.0	0.0%	30.5	30.1
68	44th Street	1,486	1,514	-28	-1.8%	52.5	52.5	0.0	0.0%	28.3	28.8
72	Rosemont-Lincoln Village	1,126	1,248	-122	-9.8%	29.3	29.3	0.0	0.0%	38.4	42.6
74	International	237	285	-48	-16.9%	10.7	10.7	0.0	0.0%	22.2	26.7
75	Mather Field	185	207	-22	-10.7%	4.4	4.4	0.0	0.0%	41.7	46.7
80	Watt-Elkhorn	1,155	1,236	-81	-6.5%	35.4	35.4	0.0	0.0%	32.7	35.0
81	Florin-65th Street	3,396	3,511	-115	-3.3%	80.3	80.3	0.0	0.0%	42.3	43.7
82	Howe-65th Street	1,917	1,982	-65	-3.3%	58.8	58.8	0.0	0.0%	32.6	33.7
84	Watt Avenue-North Highlands	994	1,092	-98	-9.0%	32.2	32.2	0.0	0.0%	30.8	33.9
86	San Juan-Silver Eagle	1,488	1,654	-166	-10.0%	41.4	41.4	0.0	0.0%	36.0	40.0
87	Howe	1,210	1,305	-95	-7.3%	28.3	28.3	0.0	0.0%	42.7	46.1
88	West El Camino	1,081	1,103	-22	-2.0%	29.0	29.0	0.0	0.0%	37.3	38.0
93	Hillsdale	1,077	1,085	-9	-0.8%	31.8	31.3	0.6	1.9%	33.8	34.7
103	Auburn Blvd	98	100	-2	-1.8%	2.9	2.9	0.0	0.0%	33.5	34.1
109	Hazel Express	102	104	-3	-2.4%	3.7	3.7	0.0	0.0%	27.3	28.0
TOTAL		44,744	46,796	-2,052	-4.4%	1,321.4	1,317.1	4.3	0.3%	33.9	35.5

**Quarterly Ridership Report  
Period Ending June 30, 2015**
**Trend Analysis**
**Bus - Saturday**

Q2 - Apr/May/June

Route Name	Boardings Per Day				Vehicle Service Hours Per Day				Boardings/Serv Hr	
	FY 2015	FY 2014	Change	% Change	FY 2015	FY 2014	Change	% Change	FY 2015	FY 2014
1 Greenback	1,112	1,153	-42	-3.6%	33.5	33.5	0.0	0.0%	33.2	34.4
11 Truxel Road	345	350	-5	-1.5%	15.3	15.3	0.0	0.0%	22.6	22.9
15 Rio Linda Blvd-O Street	664	651	13	2.0%	19.0	19.0	0.0	0.0%	35.0	34.3
19 Rio Linda	380	392	-12	-3.1%	17.8	17.8	0.0	0.0%	21.4	22.0
21 Sunrise	698	780	-81	-10.4%	28.4	28.4	0.0	0.0%	24.6	27.5
23 El Camino	1,660	1,723	-63	-3.6%	54.2	54.2	0.0	0.0%	30.6	31.8
25 Marconi	508	518	-10	-1.9%	16.1	16.1	0.0	0.0%	31.6	32.2
26 Fulton	382	430	-48	-11.2%	10.9	10.9	0.0	0.0%	35.2	39.6
30 J Street (DASH)	671	682	-11	-1.7%	22.2	22.2	0.0	0.0%	30.3	30.8
38 P/Q Streets	224	234	-10	-4.1%	16.2	16.2	0.0	0.0%	13.9	14.5
51 Broadway-Stockton	2,006	2,153	-147	-6.8%	46.7	46.7	0.0	0.0%	43.0	46.1
54 Center Parkway	159	162	-3	-2.0%	8.4	8.4	0.0	0.0%	18.9	19.3
55 Scottsdale	305	320	-15	-4.7%	8.2	8.2	0.0	0.0%	37.4	39.3
56 Pocket-C.R.C.	930	1,063	-133	-12.5%	28.0	28.0	0.0	0.0%	33.2	38.0
62 Freeport	423	443	-19	-4.4%	23.2	23.2	0.0	0.0%	18.2	19.1
67 Franklin	806	811	-5	-0.6%	21.7	21.7	0.0	0.0%	37.1	37.3
68 44th Street	724	781	-58	-7.4%	22.1	22.1	0.0	0.0%	32.8	35.4
72 Rosemont-Lincoln Village	303	354	-51	-14.5%	10.7	10.7	0.0	0.0%	28.2	33.0
75 Mather Field	126	145	-19	-12.9%	3.5	3.5	0.0	0.0%	36.2	41.6
80 Watt-Elkhorn	831	897	-66	-7.3%	30.0	30.0	0.0	0.0%	27.8	30.0
81 Florin-65th Street	1,572	1,716	-145	-8.4%	46.0	46.0	0.0	0.0%	34.2	37.3
82 Howe-65th Street	618	646	-28	-4.4%	24.3	24.3	0.0	0.0%	25.5	26.6
84 Watt Avenue-North Highlands	492	542	-49	-9.1%	21.0	21.0	0.0	0.0%	23.5	25.8
86 San Juan-Silver Eagle	589	649	-61	-9.3%	16.8	16.8	0.0	0.0%	35.0	38.7
87 Howe	451	505	-55	-10.8%	12.3	12.3	0.0	0.0%	36.6	41.0
88 West El Camino	408	446	-38	-8.6%	9.5	9.5	0.0	0.0%	42.8	46.8
93 Hillsdale	413	446	-34	-7.5%	11.9	11.9	0.0	0.0%	34.8	37.7
<b>TOTAL</b>	<b>17,798</b>	<b>18,993</b>	<b>-1,195</b>	<b>-6.3%</b>	<b>577.5</b>	<b>577.5</b>	<b>0.0</b>	<b>0.0%</b>	<b>30.8</b>	<b>32.9</b>

**Trend Analysis**
**Bus - Sun/Hol**

Q2 - Apr/May/June

Route Name	Boardings Per Day				Vehicle Service Hours Per Day				Boardings/Serv Hr	
	FY 2015	FY 2014	Change	% Change	FY 2015	FY 2014	Change	% Change	FY 2015	FY 2014
1 Greenback	788	801	-13	-1.6%	30.6	30.6	0.0	0.0%	25.8	26.2
15 Rio Linda Blvd-O Street	478	470	9	1.8%	17.7	17.7	0.0	0.0%	27.0	26.5
19 Rio Linda	324	316	8	2.4%	17.8	17.8	0.0	0.0%	18.2	17.8
21 Sunrise	464	507	-44	-8.6%	21.7	21.7	0.0	0.0%	21.4	23.4
23 El Camino	996	1,046	-49	-4.7%	26.0	26.0	0.0	0.0%	38.3	40.2
26 Fulton	248	276	-29	-10.5%	9.3	9.3	0.0	0.0%	26.5	29.6
30 J Street (DASH)	337	334	3	0.8%	11.8	11.8	0.0	0.0%	28.6	28.3
38 P/Q Streets	164	184	-20	-10.7%	12.3	12.3	0.0	0.0%	13.4	15.0
51 Broadway-Stockton	1,333	1,412	-79	-5.6%	34.3	34.3	0.0	0.0%	38.9	41.2
55 Scottsdale	180	188	-8	-4.5%	6.9	6.9	0.0	0.0%	26.0	27.3
56 Pocket-C.R.C.	553	645	-91	-14.2%	13.7	13.7	0.0	0.0%	40.3	47.0
67 Franklin	557	582	-25	-4.4%	21.7	21.7	0.0	0.0%	25.6	26.8
68 44th Street	573	604	-31	-5.2%	22.1	22.1	0.0	0.0%	26.0	27.4
72 Rosemont-Lincoln Village	222	247	-24	-9.9%	10.3	10.3	0.0	0.0%	21.6	24.0
75 Mather Field	82	99	-17	-17.3%	3.5	3.5	0.0	0.0%	23.5	28.4
80 Watt-Elkhorn	598	666	-67	-10.1%	20.9	20.9	0.0	0.0%	28.7	31.9
81 Florin-65th Street	860	924	-64	-6.9%	22.2	22.2	0.0	0.0%	38.7	41.6
82 Howe-65th Street	469	492	-23	-4.6%	21.4	21.4	0.0	0.0%	21.9	22.9
86 San Juan-Silver Eagle	362	416	-54	-13.0%	12.6	12.6	0.0	0.0%	28.8	33.1
87 Howe	290	310	-20	-6.4%	8.9	8.9	0.0	0.0%	32.5	34.7
88 West El Camino	309	340	-32	-9.3%	9.5	9.5	0.0	0.0%	32.4	35.7
93 Hillsdale	304	297	7	2.3%	11.9	11.9	0.0	0.0%	25.7	25.1
<b>TOTAL</b>	<b>10,492</b>	<b>11,156</b>	<b>-665</b>	<b>-6.0%</b>	<b>367.1</b>	<b>367.1</b>	<b>0.0</b>	<b>0.0%</b>	<b>28.6</b>	<b>30.4</b>

Quarterly Ridership Report  
 Period Ending June 30, 2015

**Trend Analysis**

CBS - Weekdays

Q2 - Apr/May/June

Route	Name	Boardings Per Day				Vehicle Service Hours Per Day				Boardings/Serv Hr	
		FY 2015	FY 2014	Change	% Change	FY 2015	FY 2014	Change	% Change	FY 2015	FY 2014
33	Dos Rios	204	253	-49	-19.4%	7.5	7.5	0.0	0.0%	27.1	33.6
47	Phoenix Park	191	188	3	1.5%	11.2	11.2	0.0	0.0%	17.0	16.8
85	McClellan Shuttle	21	26	-5	-19.8%	5.5	5.5	0.0	0.0%	3.9	4.8
95	Citrus Heights-Antelope Rd	99	90	9	10.4%	7.7	7.7	0.0	0.0%	13.0	11.7
170	Eastside Flyer	125	131	-6	-4.6%	6.5	6.5	0.0	0.0%	19.3	20.2
171	Westside Flyer	84	80	4	5.3%	4.5	4.5	0.0	0.0%	18.8	17.9
172	Central Flyer	132	133	-1	-1.0%	6.3	6.3	0.0	0.0%	20.8	21.0
173	Square Flyer	24	21	3	12.4%	1.6	1.6	0.0	0.0%	14.9	13.3
176	Cordovan - Anatolia	61	42	18	43.3%	4.5	4.5	0.0	0.0%	13.4	9.4
177	Rancho Cordovan	157	181	-24	-13.2%	5.8	5.8	0.0	0.0%	27.1	31.2
178	Granite Shuttle	92	91	1	1.0%	6.8	6.8	0.0	0.0%	13.5	13.3
TOTAL		1,189	1,237	-47	-3.8%	67.9	67.9	0.0	0.0%	17.5	18.2

**Quarterly Ridership Report  
Period Ending June 30, 2015**

**Average Weekday Ridership**

Historical Trends by Station



BLUE LINE - TOTAL	Year Ended <sup>1</sup> 6/30/09		Year Ended <sup>2</sup> 6/30/10		Year Ended 6/30/11		Year Ended 6/30/12		Year Ended 6/30/13		Year Ended 6/30/2014		Year Ended 6/30/2015		Percent Change FY14 to FY15	
	On	Off	On	Off	On	Off	On	Off	On	Off	On	Off	On	Off	On	Off
WATT / I-80	2,487	2,295	2,111	2,087	1,785	1,825	2,164	2,108	2,157	2,088	2,020	2,130	1,871	1,859	-7%	-13%
WATT I-80 WEST	96	216	102	161	143	150	116	116	131	127	118	165	91	97	-23%	-41%
ROSEVILLE RD	699	1,178	634	1,035	677	713	633	736	633	635	576	596	527	558	-9%	-6%
MARCONI / ARCADE	1,262	934	999	928	827	716	916	870	1,057	959	1,062	988	825	866	-22%	-12%
SWANSTON	416	417	313	267	271	294	269	299	313	304	341	393	346	353	1%	-10%
ROYAL OAKS	751	707	547	437	429	398	515	417	588	539	602	535	633	612	5%	14%
ARDEN / DEL PASO	1,644	1,917	1,605	1,777	1,186	1,366	1,361	1,606	1,297	1,457	1,316	1,394	1,203	1,319	-9%	-5%
GLOBE AVENUE	317	374	309	320	243	253	296	301	297	288	304	304	356	357	17%	17%
ALKALI FLAT / LA VALENTINA	1,805	1,402	1,256	1,199	920	948	949	978	1,086	1,020	1,076	1,058	951	979	-12%	-7%
12TH & I STREETS	732	711	639	677	512	551	612	662	504	591	576	577	522	598	-9%	4%
CATHEDRAL SQUARE	1,203	1,295	998	1,111	885	893	846	939	743	927	809	871	715	1,035	-12%	19%
7TH / 9TH & K	3,136	2,972	2,629	2,156	1,825	1,652	2,022	1,887	1,921	1,890	1,943	1,825	1,381	1,042	-29%	-43%
7TH / 8TH & CAPITOL	1,061	955	967	753	701	616	673	629	611	637	588	593	809	705	38%	19%
8TH & O STREETS	891	714	855	653	754	668	763	679	675	693	693	707	737	651	6%	-8%
ARCHIVES PLAZA	730	521	619	511	478	484	519	487	489	491	520	477	522	483	0%	1%
13TH STREET	398	541	446	496	346	392	429	416	508	472	494	478	664	518	34%	8%
16TH STREET	2,758	2,850	2,454	2,564	1,767	1,982	2,213	2,396	2,008	2,225	1,984	2,148	1,731	1,774	-13%	-17%
BROADWAY	1,218	1,503	1,073	1,127	863	924	1,030	930	1,034	1,012	1,014	929	800	927	-21%	0%
4TH/WAYNE HULTGREN	677	812	850	656	637	570	760	577	684	594	723	532	562	422	-22%	-21%
CITY COLLEGE	1,795	1,896	1,923	2,061	1,433	1,393	1,757	1,682	1,689	1,789	1,772	1,626	1,257	945	-29%	-42%
FRUITRIDGE	822	762	654	633	535	552	675	682	642	618	612	577	462	613	-24%	6%
4TH AVE	673	718	626	721	649	576	717	728	763	682	720	733	623	729	-13%	-1%
FLORIN	2,322	2,085	1,672	1,902	1,383	1,341	1,508	1,723	1,606	1,631	1,590	1,783	1,340	1,602	-16%	-10%
MEADOWVIEW	3,456	3,575	3,050	3,098	2,443	2,437	2,813	2,706	2,774	2,542	2,460	2,493	2,057	1,940	-16%	-22%
	31,349	31,349	27,331	27,331	21,693	21,692	24,555	24,555	24,209	24,210	23,912	23,912	20,984	20,984	-12%	-12%

1 FY 2009 data is sampled over Q4 only, but projected over full year totals.

2 FY 2010 data ends on 6/20/10 when major service changes were adopted

**Average Weekday Ridership**

Historical Trends by Station



GOLD LINE - TOTAL	Year Ended <sup>1</sup> 6/30/09		Year Ended <sup>2</sup> 6/30/10		Year Ended 6/30/11		Year Ended 6/30/12		Year Ended 6/30/13		Year Ended 6/30/2014		Year Ended 6/30/2015		Percent Change FY14 to FY15	
	On	Off	On	Off	On	Off	On	Off	On	Off	On	Off	On	Off	On	Off
SAC VALLEY	749	951	741	619	490	561	504	482	387	363	439	299	483	301	10%	0%
7TH & I	715	-	636	-	379	34	375	22	359	9	399	14	549	28	37%	98%
8TH & H	-	-	-	-	-	-	55	304	23	279	21	317	36	398	72%	26%
7TH & K	-	-	687	13	886	61	1,047	47	1,002	46	1,016	58	757	40	-26%	-31%
8TH & K	-	1,922	-	1,972	80	1,585	71	1,567	39	1,351	48	1,173	35	876	-28%	-25%
7TH / 8TH & CAPITOL	1,716	557	982	460	633	649	610	572	483	511	498	511	568	686	14%	34%
8TH & O STREETS	1,165	672	946	632	911	767	871	832	732	714	746	687	934	643	25%	-6%
ARCHIVES PLAZA	1,085	618	897	628	723	745	691	699	628	660	620	663	681	616	10%	-7%
13TH STREET	780	648	718	526	536	460	524	484	627	538	515	487	569	542	11%	11%
16TH STREET	3,139	2,368	2,974	2,476	2,168	2,169	2,437	2,367	2,146	2,317	1,982	2,148	1,997	1,918	1%	-11%
23RD STREET	809	911	763	773	625	610	661	580	573	571	549	500	585	627	7%	25%
29TH STREET	2,235	2,238	2,079	1,919	1,597	1,622	1,817	1,684	1,767	1,571	1,659	1,599	1,544	1,690	-7%	6%
39TH STREET	504	525	386	340	355	310	353	307	396	321	350	295	276	281	-21%	-5%
48TH STREET	209	340	241	232	194	237	204	227	206	231	216	211	250	215	16%	2%
59TH STREET	391	259	365	291	255	294	303	245	308	287	254	259	279	305	10%	18%
65TH STREET	1,945	2,544	1,826	1,920	1,523	1,520	1,670	1,762	1,678	1,708	1,634	1,728	1,612	1,814	-1%	5%
POWER INN ROAD	1,108	1,321	1,181	1,201	832	806	846	806	796	770	758	723	727	677	-4%	-6%
COLLEGE GREENS	1,153	973	856	878	769	752	823	779	795	736	808	773	892	854	10%	10%
WATT / MANLOVE	1,299	1,483	1,318	1,665	1,185	1,170	1,214	1,330	1,256	1,333	1,179	1,265	1,097	1,314	-7%	4%
STARFIRE	575	889	605	628	439	358	511	388	480	416	443	375	545	290	23%	-23%
TIBER	384	420	388	461	307	323	372	383	358	390	371	390	392	357	6%	-8%
BUTTERFIELD	817	664	741	790	677	662	737	705	690	719	714	677	706	683	-1%	1%
MATHER FIELD / MILLS	2,581	2,279	2,048	2,350	1,600	1,632	1,762	1,914	1,814	1,844	1,758	1,754	1,591	2,013	-9%	15%
ZINFANDEL	1,034	1,064	1,236	1,201	878	833	942	921	1,040	1,010	1,064	1,119	1,155	1,211	9%	8%
CORDOVA TOWN CTR	654	638	788	781	652	601	684	698	661	602	638	618	702	588	10%	-5%
SUNRISE	823	938	972	1,111	836	825	840	909	883	862	823	803	687	748	-17%	-7%
HAZEL	189	285	187	445	199	190	215	239	209	192	186	179	169	204	-9%	14%
IRON POINT	419	643	363	593	446	466	481	537	473	497	480	488	541	450	13%	-8%
GLENN	264	436	256	360	325	308	289	294	284	247	241	261	183	219	-24%	-16%
HIST FOLSOM	433	590	582	495	512	460	533	510	508	511	486	513	465	420	-4%	-18%
	27,175	27,175	25,760	25,759	21,009	21,010	22,443	22,591	21,602	21,608	20,895	20,888	21,008	21,008	1%	1%

1 FY 2009 data is actually Q4 stop-level data adjusted to match full year totals.

2 FY 2010 data ends on 6/20/10 when major service changes were adopted


**Average Weekday Ridership**

Historical Trends by Station



GREEN LINE - TOTAL	Year Ended 6/30/13		Year Ended 6/30/14		Year Ended 6/30/2015		Percent Change FY14 to FY15	
	On	Off	On	Off	On	Off	On	Off
RICHARDS BLVD	79	82	103	105	150	143	45%	36%
7TH & I	13	16	13	25	24	38	85%	54%
7TH & K	25	34	26	41	22	48	-16%	18%
7TH / 8TH & CAPITOL	16	13	22	14	35	25	63%	81%
8TH & O STREETS	21	17	28	23	28	27	0%	14%
ARCHIVES PLAZA	33	17	32	21	37	28	15%	33%
13TH STREET	51	68	58	74	76	104	32%	41%
8TH & K	38	35	48	38	55	36	14%	-4%
8TH & H	19	15	22	12	38	16	72%	27%
	297	297	352	352	464	464	32%	32%