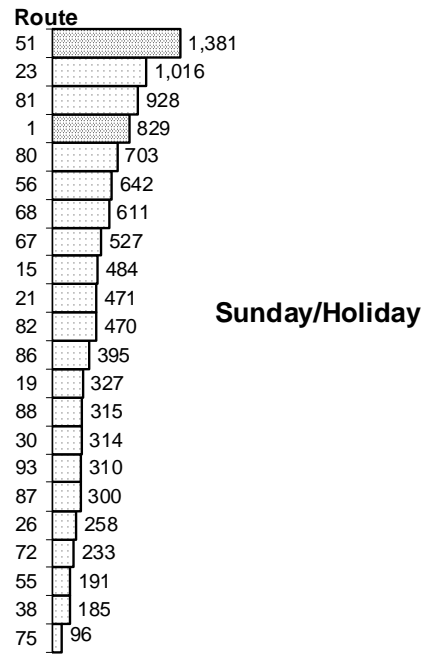
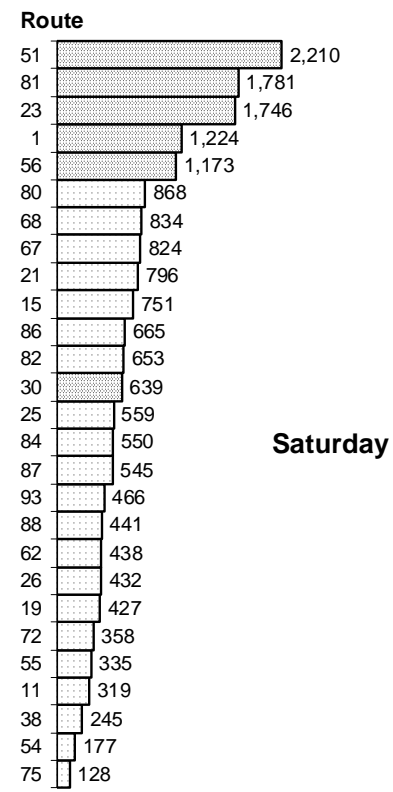
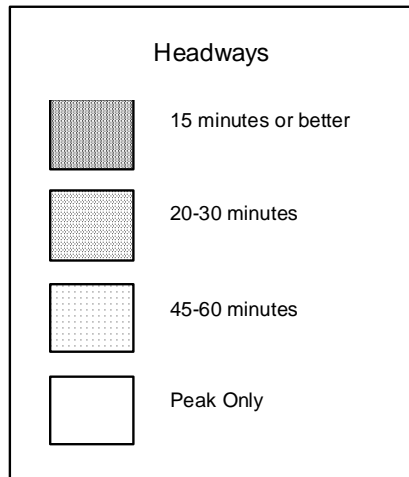
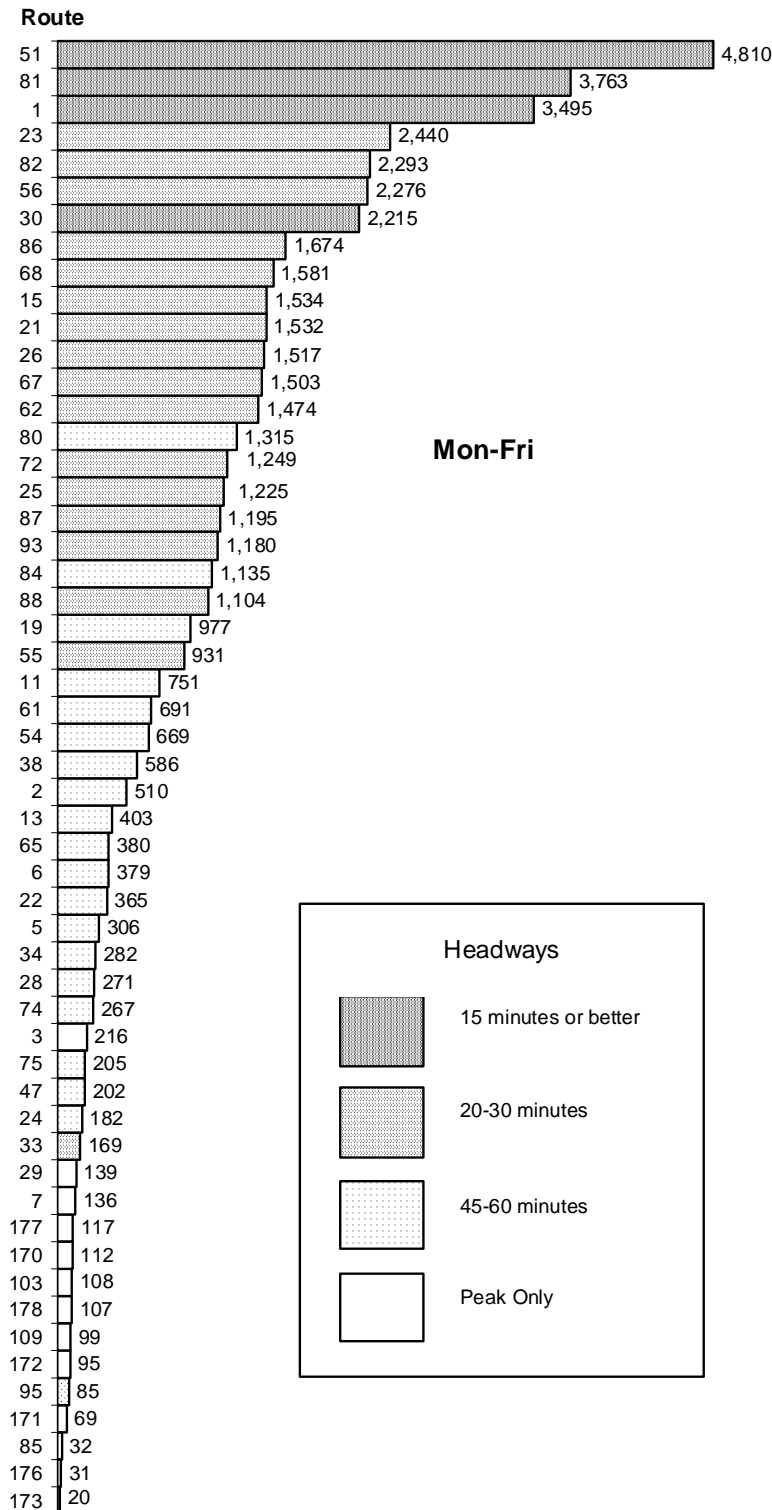




Quarterly Ridership Report
Period Ending December 31, 2013

Quarterly Ridership Report
 Period Ending December 31, 2013

RT Bus Routes
Average Daily Boardings



Quarterly Ridership Report
 Period Ending December 31, 2013

Performance Monitoring

Monday-Friday

Minimum productivity standards for regular weekday bus routes are **20.0 boardings per revenue hour**. Low-productivity routes are reviewed by staff for possible corrective action. Newly created routes that do not meet minimum productivity standards within two years are subject to automatic elimination pursuant to RT's route sunset process.

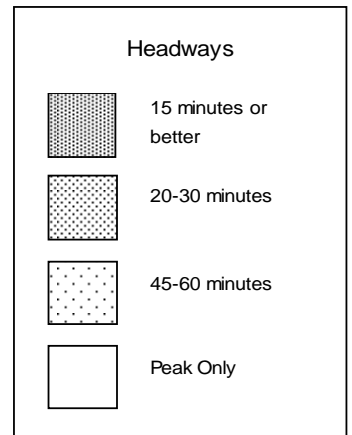
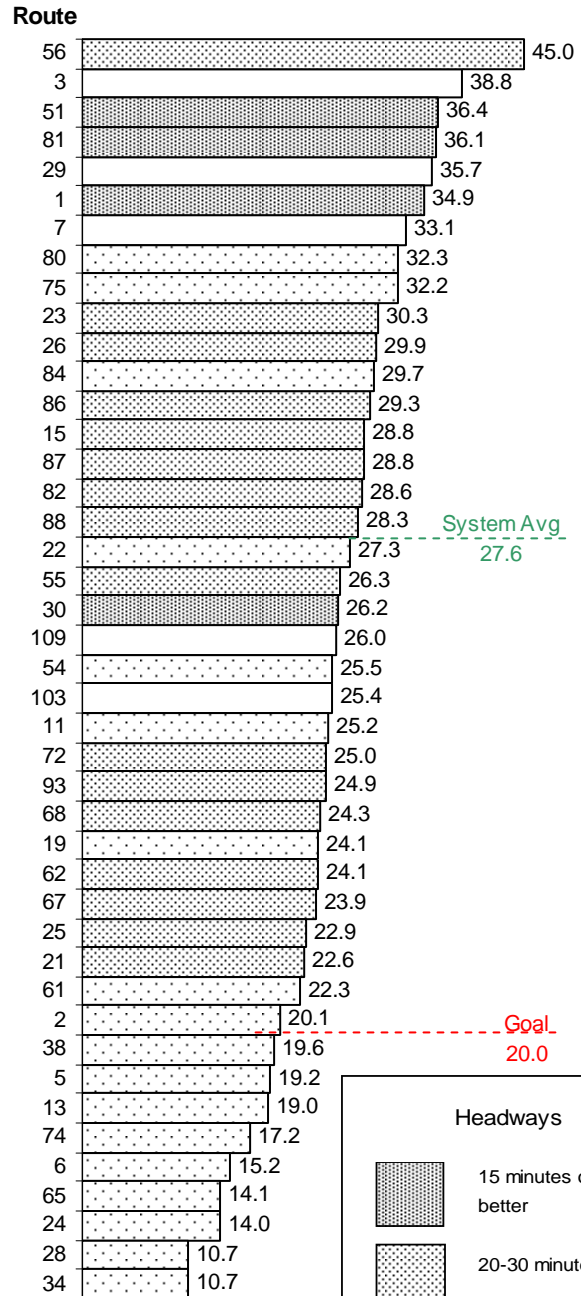
Routes Below Standard

Route	Name	Quarters
5	Meadowview/Valley Hi	6 qtrs
6	Land Park	6 qtrs
13	Northgate	6 qtrs
24	Madison/Greenback	6 qtrs
28	Fair Oaks/Cordova Town Ctr	6 qtrs
34	McKinley	6 qtrs
38	P/Q Streets	3 qtrs
65	Franklin South	6 qtrs
74	International	6 qtrs

Notes:

- Routes 2, 5, 24, and 61 improved from previous quarter due to school ridership
- Route 28 was extended from Cordova Town Center light rail station to Mather Field/Mills light rail station in January 2014

Boardings Per Revenue Hour



Quarterly Ridership Report
Period Ending December 31, 2013

Performance Monitoring

Saturday

Minimum productivity standards for Saturday bus routes are **15.0 boardings per revenue hour**. Low-productivity routes are reviewed by staff for possible corrective action. Newly created routes that do not meet minimum productivity standards within two years are subject to automatic elimination pursuant to RT's route sunset process.

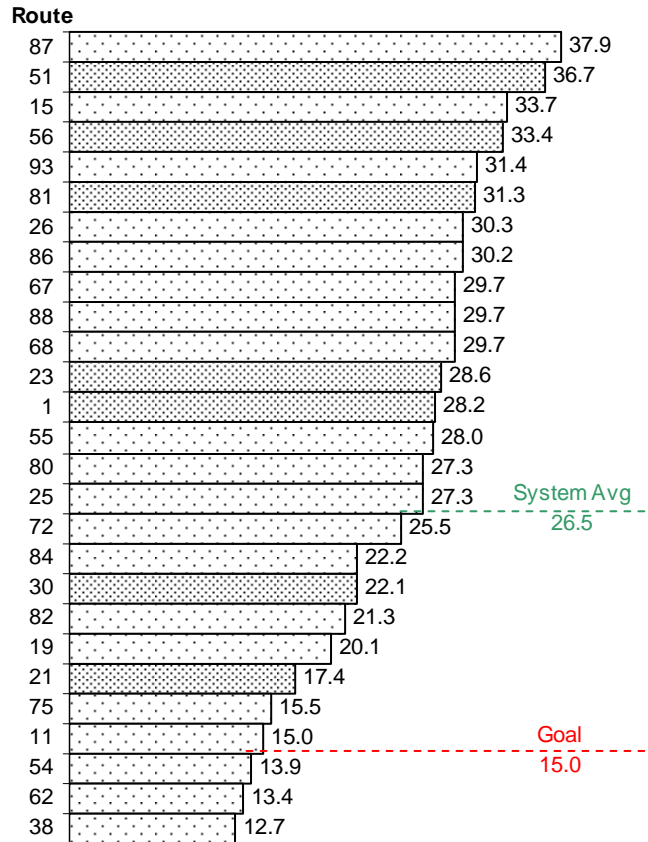
Routes Below Standard

Route	Name	Quarters
38	P/Q Streets	6 qtrs
54	Center Pkwy	5 qtrs
62	Freeport	6 qtrs

Notes:

- Routes 11 and 54 were added on Saturdays in September 2012 and are subject to RT's route sunset process.
- Route 11 Saturday service met RT's productivity goal for the first time.
- Please see Attachments 2 and 3 for detailed assessments of Routes 11 and 54.
- Route 75 was below standard previous quarter but met standards this quarter.

Boardings Per Revenue Hour



Quarterly Ridership Report
 Period Ending December 31, 2013

Performance Monitoring

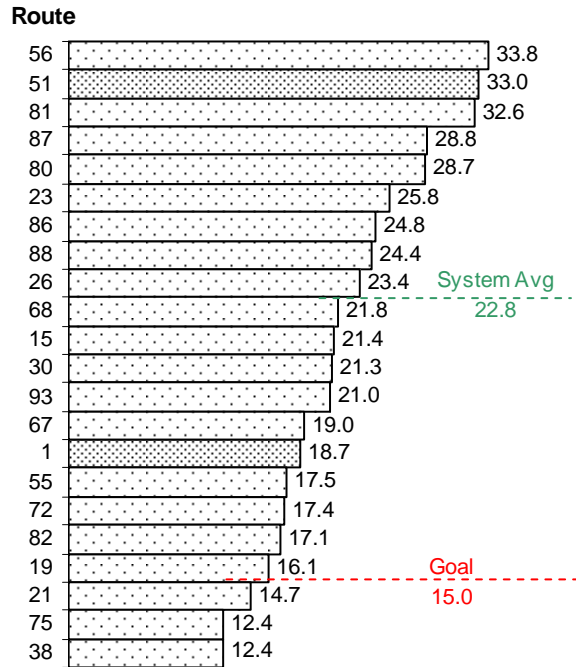
Sunday/Holiday

Minimum productivity standards for Sunday/Holiday bus routes are **15.0 boardings per revenue hour**. Low-productivity routes are reviewed by staff for possible corrective action. Newly created routes that do not meet minimum productivity standards within two years are subject to automatic elimination pursuant to RT's route sunset process.

Routes Below Standard

Route	Name	Quarters
21	Sunrise/Citrus Heights	5 qtrs
75	Mather	6 qtrs
38	P/Q Streets	6 qtrs

Boardings Per Revenue Hour



Quarterly Ridership Report
Period Ending December 31, 2013

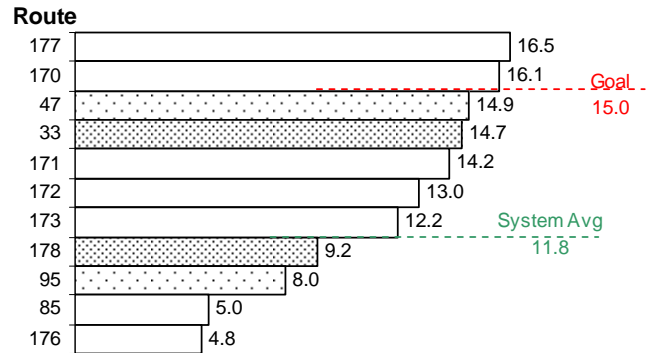
Performance Monitoring

Community Bus Service

Minimum productivity standards for CBS routes are **15.0 boardings per revenue hour**. CBS routes supported by a third-party subsidy are considered to be meeting standards if the net operating cost does not exceed **\$9.74 per passenger**. Low-productivity routes are reviewed by staff for possible corrective action. Newly created routes that do not meet minimum productivity standards within two years are subject to automatic elimination pursuant to RT's route sunset process.

Route	Name	Contract	Quarters
33	Dos Rios	No	2 qtrs
47	Phoenix Park	No	3 qtrs
85	McClellan Shuttle	Yes	6 qtrs
95	Citrus Hts - Antelope Rd	No	5 qtrs
176	Cordovan - Anatolia	Yes	6 qtrs
178	Granite Shuttle	Yes	6 qtrs

Boardings Per Revenue Hour



10/1/13 - 12/31/13

Notes:

- Route 33 ridership had been reported much lower than historical averages. Investigation determined issues related to passenger counting hardware. Correction of these issues has resulted in reported ridership returning to historical levels in December and January.
- Routes 85, 170-173, and 176-178 are operated according to agreements with outside parties.
- Routes 171-173 do not meet productivity standards but meet net operating cost goals due to third-party subsidy.
- Route 95 is subject to RT's route sunset process and is not currently on pace to meet productivity goals by the two year deadline (9/1/14). See Attachment 2 for more information

Quarterly Ridership Report
Period Ending December 31, 2013

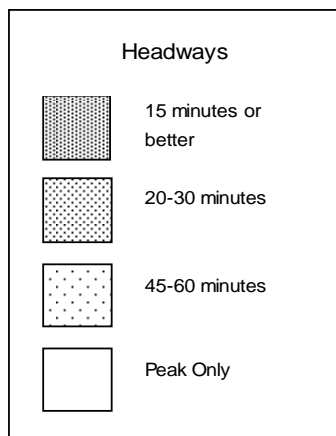
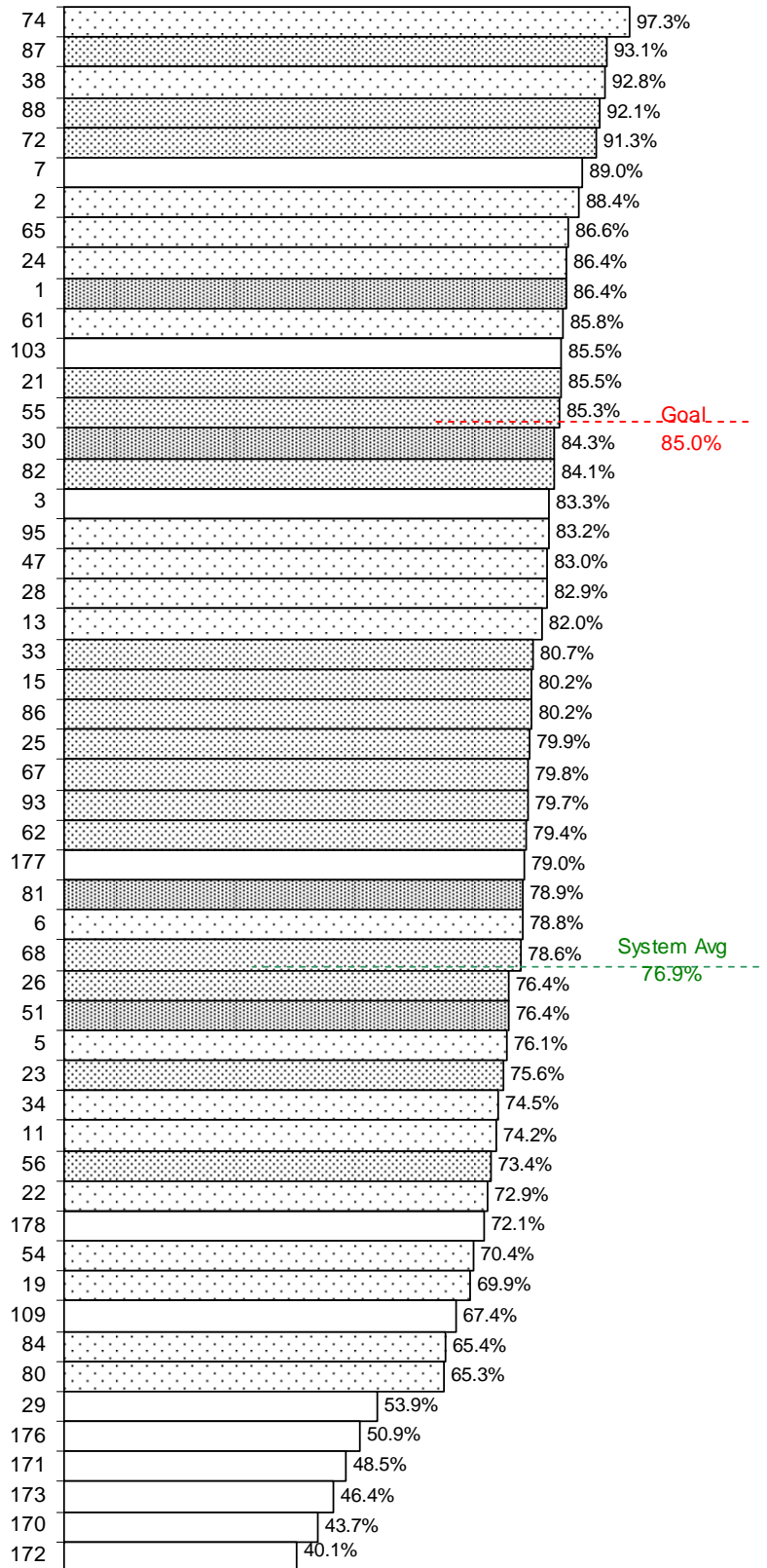
Weekday Bus and CBS Routes

On-time performance is measured at time points, which are major stops shown on the public schedule (usually 4-6 per route).

A bus is considered on-time if it leaves its time point 0-5 minutes late. On-time performance indicates the percent of time points where the bus was on-time according to this definition.

Weekday on-time performance continues to be about 8 percent below RT's goal of 85.0 percent. Systemwide on-time performance was 76.9 percent, down from last period.

Period	On-Time Performance
Q1 2013	79.2%
Q2 2013	79.5%
Q3 2013	79.1%
Q4 2013	76.9%


On-Time Performance


Quarterly Ridership Report
Period Ending December 31, 2013

Saturday Bus Routes

On-time performance is measured at time points, which are major stops shown on the public schedule (usually 4-6 per route).

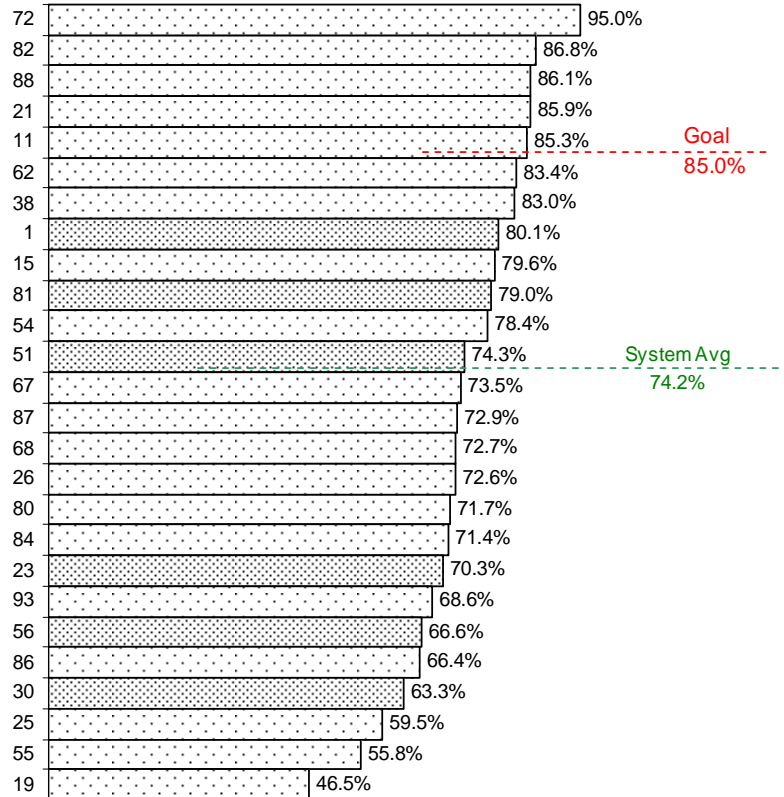
A bus is considered on-time if it leaves its time point 0-5 minutes late. On-time performance indicates the percent of time points where the bus was on-time according to this definition.

Saturdays continued to be RT's most difficult day for on-time performance. Systemwide on-time performance was 74.2 percent, slightly down from 74.4 percent last quarter but up from January - March.

Period	On-Time Performance
Q1 2013	72.0%
Q2 2013	75.1%
Q3 2013	74.4%
Q4 2013	74.2%

Notes:

- Route 19 improved from 36.4 to 45.5 percent
- Route 30 worsened from 73.8 to 63.3 percent
- Route 86 worsened from 76.7 to 66.4 percent
- Route 23 worsened from 81.7 to 70.3 percent
- Route 68 improved from 57.2 to 72.7 percent
- Route 67 improved from 56.7 to 73.5 percent
- Route 26 improved from 61.5 to 72.6 percent

On-Time Performance


Quarterly Ridership Report
Period Ending December 31, 2013

Sunday/Holiday Bus Routes

On-time performance is measured at time points, which are major stops along the route and shown on the public schedule (usually 4-6 per route).

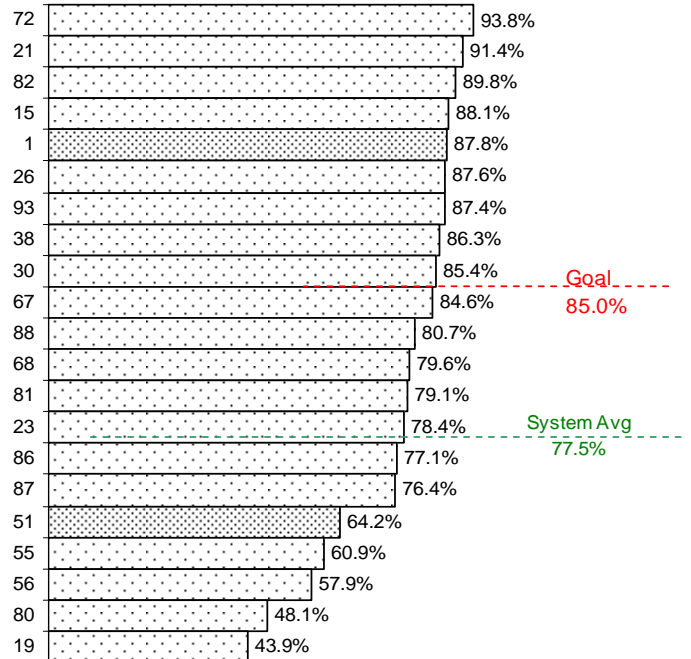
A bus is considered on-time if it leaves its time point 0-5 minutes late. On-time performance indicates the percent of time points where the bus was on-time according to this definition.

Sunday/Holiday on-time performance was 77.5 percent, down slightly from 77.8 percent last quarter.

Period	On-Time Performance
Q1 2013	78.6%
Q2 2013	78.3%
Q3 2013	77.8%
Q4 2013	77.5%

Notes:

- Route 80 decreased from 58.6% to 48.1%.
- Route 51 decreased from 76.1% to 64.2%.
- Route 68 improved from 69.7% to 79.6%
- Route 67 improved from 72.7% to 84.6%.

On-Time Performance


10/1/13 - 12/31/13

Light Rail On-Time Departures

Light rail on-time performance is measured at trip start points. A one-way trip is considered on-time if it departs 0-5 minutes late.

Blue Line on-time performance improved from 98.4 to 98.8 percent. Gold Line on-time performance improved from 98.0 percent to 99.4 percent. Green Line on-time performance improved from 96.9 percent to 99.8 percent.

On-Time Departures 0-5 minutes late	
Blue Line	98.8%
Gold Line	99.4%
Green Line	99.8%
Goal =	97.0%



Quarterly Ridership Report
Period Ending December 31, 2013



Weekday Bus Ridership

10/1/13 - 12/31/13

Route	Name	Boardings Per Day	Trips Per Day	Rev Hrs Per Day	(Goal = 20)	(Goal < \$6.98)	Full Cost Per Psgr	Net Cost Per Psgr	Net Cost Per Rev Hr	Farebox Recovery	Below Standards
					Psgr Per Rev Hr	Psgr Per Rev Mile					
1	Greenback *	3,495	121	100.1	34.9	2.9	\$4.00	\$2.90	\$101.15	28%	
2	Riverside	510	26	25.3	20.1	1.8	\$6.93	\$5.83	\$117.45	16%	
3	Riverside Express	216	8	5.6	38.8	2.2	\$3.59	\$2.49	\$96.83	31%	
5	Meadowview-Valley Hi *	306	31	16.0	19.2	1.6	\$7.27	\$6.17	\$118.47	15%	X
6	Land Park	379	27	25.0	15.2	1.3	\$9.19	\$8.09	\$122.90	12%	X
7	Pocket Express	136	6	4.1	33.1	2.1	\$4.22	\$3.12	\$103.21	26%	
11	Truxel Road *	751	39	29.8	25.2	2.1	\$5.54	\$4.44	\$111.88	20%	
13	Northgate	403	33	21.2	19.0	1.9	\$7.35	\$6.25	\$118.71	15%	X
15	Rio Linda Blvd-O Street	1,534	56	53.2	28.8	2.5	\$4.85	\$3.74	\$107.88	23%	
19	Rio Linda *	977	29	40.6	24.1	1.7	\$5.80	\$4.69	\$113.09	19%	
21	Sunrise	1,532	70	67.7	22.6	1.7	\$6.17	\$5.07	\$114.71	18%	
22	Arden *	365	28	13.4	27.3	2.8	\$5.11	\$4.01	\$109.55	22%	
23	El Camino	2,440	62	80.7	30.3	2.6	\$4.62	\$3.51	\$106.30	24%	
24	Madison-Greenback	182	27	13.0	14.0	1.4	\$9.96	\$8.86	\$124.19	11%	X
25	Marconi *	1,225	55	53.6	22.9	1.9	\$6.11	\$5.01	\$114.46	18%	
26	Fulton *	1,517	52	50.7	29.9	2.7	\$4.66	\$3.56	\$106.64	24%	
28	Fair Oaks-Folsom	271	33	25.2	10.7	1.1	\$12.99	\$11.89	\$127.80	8%	X
29	Arden-California Avenue	139	4	3.9	35.7	2.2	\$3.91	\$2.81	\$100.30	28%	
30	J Street (DASH) *	2,215	116	84.5	26.2	4.0	\$5.33	\$4.23	\$110.76	21%	
34	McKinley *	282	27	26.3	10.7	1.3	\$13.00	\$11.90	\$127.80	8%	X
38	P/Q Streets	586	31	29.9	19.6	2.3	\$7.11	\$6.01	\$117.99	16%	X
51	Broadway-Stockton *	4,810	143	132.2	36.4	3.8	\$3.84	\$2.74	\$99.54	29%	
54	Center Parkway *	669	31	26.2	25.5	2.3	\$5.47	\$4.37	\$111.53	20%	
55	Scottsdale *	931	49	35.4	26.3	2.6	\$5.31	\$4.21	\$110.65	21%	
56	Pocket-C.R.C.	2,276	66	50.6	45.0	4.1	\$3.10	\$2.00	\$90.05	36%	
61	Fruitridge	691	32	30.9	22.3	2.1	\$6.25	\$5.15	\$115.03	18%	
62	Freeport	1,474	60	61.3	24.1	2.3	\$5.81	\$4.70	\$113.13	19%	
65	Franklin South	380	28	26.9	14.1	1.8	\$9.88	\$8.78	\$124.06	11%	X

Cost figures based on fully allocated cost of \$139.64 per revenue hour (FY14 budget)

Average fare assumed to be \$1.102 per boarding passenger (FY14 budget)

* Indicates route with substantial changes in September 2012



Quarterly Ridership Report
Period Ending December 31, 2013



Weekday Bus Ridership

10/1/13 - 12/31/13

Route	Name	Boardings Per Day	Trips Per Day	Rev Hrs Per Day	(Goal = 20)	(Goal < \$6.98)	Full Cost Per Psgr	Net Cost Per Psgr	Net Cost Per Rev Hr	Farebox Recovery	Below Standards
					Psgr Per Rev Hr	Psgr Per Rev Mile					
67	Franklin	1,503	57	62.9	23.9	2.2	\$5.85	\$4.74	\$113.32	19%	
68	44th Street	1,581	58	65.1	24.3	2.3	\$5.74	\$4.64	\$112.85	19%	
72	Rosemont-Lincoln Village	1,249	62	50.0	25.0	2.9	\$5.60	\$4.49	\$112.14	20%	
74	International	267	29	15.5	17.2	1.9	\$8.11	\$7.01	\$120.66	14%	X
75	Mather Field	205	14	6.4	32.2	2.8	\$4.34	\$3.24	\$104.21	25%	
80	Watt-Elkhorn	1,315	32	40.8	32.3	2.5	\$4.33	\$3.23	\$104.10	25%	
81	Florin-65th Street	3,763	119	104.3	36.1	3.4	\$3.87	\$2.77	\$99.87	28%	
82	Howe-65th Street	2,293	66	80.3	28.6	2.7	\$4.89	\$3.79	\$108.17	23%	
84	Watt Avenue-North Highlands	1,135	28	38.2	29.7	2.5	\$4.70	\$3.59	\$106.87	23%	
86	San Juan-Silver Eagle	1,674	61	57.1	29.3	2.5	\$4.76	\$3.66	\$107.33	23%	
87	Howe	1,195	55	41.5	28.8	3.3	\$4.85	\$3.75	\$107.90	23%	
88	West El Camino	1,104	59	39.1	28.3	2.5	\$4.94	\$3.84	\$108.50	22%	
93	Hillsdale	1,180	54	47.5	24.9	2.1	\$5.62	\$4.52	\$112.25	20%	
103	Auburn Blvd	108	8	4.2	25.4	1.5	\$5.49	\$4.39	\$111.63	20%	
109	Hazel Express	99	4	3.8	26.0	1.0	\$5.38	\$4.28	\$111.04	20%	

Cost figures based on fully allocated cost of \$139.64 per revenue hour (FY14 budget)

Average fare assumed to be \$1.102 per boarding passenger (FY14 budget)

* Indicates route with substantial changes in September 2012



Quarterly Ridership Report
 Period Ending December 31, 2013



Saturday Bus Ridership

10/1/13 - 12/31/13

Route	Name	Boardings Per Day	Trips Per Day	Rev Hrs Per Day	(Goal = 15)	(Goal < \$9.30)	Full Cost Per Psgr	Net Cost Per Psgr	Net Cost Per Rev Hr	Farebox Recovery	Below Standards
					Psg'r Per Rev Hr	Psg'r Per Rev Mile					
1	Greenback	1,224	63	43.5	28.2	2.3	\$4.96	\$3.86	\$108.61	22%	
11	Truxel Road *	319	26	21.3	15.0	1.3	\$9.32	\$8.22	\$123.13	12%	X
15	Rio Linda Blvd-O Street	751	29	22.3	33.7	2.4	\$4.15	\$3.05	\$102.54	27%	
19	Rio Linda *	427	20	21.2	20.1	1.1	\$6.94	\$5.84	\$117.47	16%	
21	Sunrise	796	42	45.6	17.4	1.8	\$8.01	\$6.91	\$120.42	14%	
23	El Camino	1,746	50	61.0	28.6	2.2	\$4.88	\$3.78	\$108.09	23%	
25	Marconi *	559	21	20.5	27.3	1.6	\$5.12	\$4.02	\$109.59	22%	
26	Fulton	432	21	14.3	30.3	2.5	\$4.60	\$3.50	\$106.20	24%	
30	J Street (DASH)	639	53	28.9	22.1	2.5	\$6.31	\$5.21	\$115.24	17%	
38	P/Q Streets	245	25	19.3	12.7	1.2	\$10.98	\$9.88	\$125.63	10%	X
51	Broadway-Stockton	2,210	64	60.3	36.7	3.9	\$3.81	\$2.71	\$99.22	29%	
54	Center Parkway *	177	24	12.7	13.9	1.3	\$10.02	\$8.92	\$124.28	11%	X
55	Scottsdale	335	19	12.0	28.0	2.4	\$4.98	\$3.88	\$108.73	22%	
56	Pocket-C.R.C.	1,173	53	35.1	33.4	2.7	\$4.18	\$3.08	\$102.82	26%	
62	Freeport	438	29	32.8	13.4	1.4	\$10.46	\$9.36	\$124.93	11%	X
67	Franklin	824	28	27.8	29.7	2.5	\$4.70	\$3.60	\$106.91	23%	
68	44th Street	834	28	28.1	29.7	2.5	\$4.70	\$3.60	\$106.93	23%	
72	Rosemont-Lincoln Village	358	23	14.1	25.5	2.2	\$5.48	\$4.38	\$111.56	20%	
75	Mather Field	128	11	8.3	15.5	2.2	\$9.02	\$7.92	\$122.58	12%	
80	Watt-Elkhorn	868	26	31.8	27.3	2.0	\$5.11	\$4.01	\$109.56	22%	
81	Florin-65th Street	1,781	58	57.0	31.3	2.8	\$4.47	\$3.36	\$105.19	25%	
82	Howe-65th Street	653	31	30.7	21.3	1.7	\$6.56	\$5.46	\$116.18	17%	
84	Watt Avenue-North Highlands	550	20	24.8	22.2	1.7	\$6.30	\$5.20	\$115.22	17%	
86	San Juan-Silver Eagle	665	28	22.0	30.2	2.1	\$4.62	\$3.51	\$106.31	24%	
87	Howe	545	29	14.4	37.9	2.9	\$3.69	\$2.58	\$97.90	30%	
88	West El Camino	441	26	14.9	29.7	2.3	\$4.70	\$3.60	\$106.92	23%	
93	Hillsdale	466	22	14.8	31.4	2.1	\$4.44	\$3.34	\$105.00	25%	

Cost figures based on fully allocated cost of \$139.64 per revenue hour (FY14 budget)

Average fare assumed to be \$1.102 per boarding passenger (FY14 budget)

* Indicates route with substantial changes in September 2012



Quarterly Ridership Report
Period Ending December 31, 2013



Sun/Hol Bus Ridership

10/1/13 - 12/31/13

Route	Name	Boardings Per Day	Trips Per Day	Rev Hrs Per Day	(Goal = 15)	(Goal < \$9.30)	Net Cost Per Psgr	Net Cost Per Rev Hr	Farebox Recovery	Below Standards	
					Psg'r Per Rev Hr	Psg'r Per Rev Mile					Full Cost Per Psgr
1	Greenback	829	63	44.3	18.7	1.6	\$7.47	\$6.36	\$119.03	15%	
15	Rio Linda Blvd-O Street	484	26	22.7	21.4	1.8	\$6.53	\$5.43	\$116.07	17%	
19	Rio Linda *	327	20	20.3	16.1	0.8	\$8.69	\$7.59	\$121.93	13%	
21	Sunrise	471	30	32.1	14.7	1.4	\$9.52	\$8.42	\$123.47	12%	X
23	El Camino	1,016	28	39.3	25.8	2.3	\$5.40	\$4.30	\$111.15	20%	
26	Fulton	258	20	11.1	23.4	1.6	\$5.97	\$4.87	\$113.88	18%	
30	J Street (DASH)	314	28	14.8	21.3	2.3	\$6.57	\$5.47	\$116.22	17%	
38	P/Q Streets	185	20	14.9	12.4	1.1	\$11.24	\$10.14	\$125.95	10%	X
51	Broadway-Stockton	1,381	50	41.9	33.0	3.2	\$4.23	\$3.13	\$103.29	26%	
55	Scottsdale *	191	16	10.9	17.5	1.6	\$7.96	\$6.86	\$120.32	14%	
56	Pocket-C.R.C.	642	27	19.0	33.8	2.9	\$4.13	\$3.03	\$102.38	27%	
67	Franklin	527	28	27.8	19.0	1.6	\$7.35	\$6.25	\$118.70	15%	
68	44th Street	611	28	28.1	21.8	1.8	\$6.42	\$5.32	\$115.67	17%	
72	Rosemont-Lincoln Village	233	22	13.4	17.4	1.5	\$8.04	\$6.94	\$120.51	14%	
75	Mather Field	96	11	7.8	12.4	1.7	\$11.24	\$10.14	\$125.95	10%	X
80	Watt-Elkhorn	703	23	24.5	28.7	1.8	\$4.86	\$3.76	\$108.00	23%	
81	Florin-65th Street	928	29	28.5	32.6	2.9	\$4.28	\$3.18	\$103.72	26%	
82	Howe-65th Street	470	28	27.5	17.1	1.3	\$8.17	\$7.07	\$120.81	13%	
86	San Juan-Silver Eagle	395	21	15.9	24.8	1.7	\$5.64	\$4.54	\$112.35	20%	
87	Howe	300	21	10.4	28.8	2.2	\$4.85	\$3.74	\$107.89	23%	
88	West El Camino	315	26	12.9	24.4	1.6	\$5.73	\$4.62	\$112.77	19%	
93	Hillsdale	310	22	14.8	21.0	1.4	\$6.65	\$5.55	\$116.51	17%	

Cost figures based on fully allocated cost of \$139.64 per revenue hour (FY14 budget)

Average fare assumed to be \$1.102 per boarding passenger (FY14 budget)

* Indicates route with substantial changes in September 2012



Quarterly Ridership Report
Period Ending December 31, 2013



CBS Ridership

10/1/13 - 12/31/13

Route	Name	Boardings Per Day	Trips Per Day	Rev Hrs Per Day	(Goal > 15)	Psgr Per Rev Hr	Psgr Per Rev Mile	Full Cost Per Psgr	(Goal < \$9.74)	Net Cost Per Psgr	Net Cost Per Rev Hr	Farebox Recovery	Contract Service	Below Standards
33	Dos Rios	169	60	11.5	14.7	2.1	\$11.06	\$9.96	\$146.45	10%				X
47	Phoenix Park	202	24	13.5	14.9	1.3	\$10.89	\$9.78	\$146.19	10%				X
85	McClellan Shuttle	32	14	6.4	5.0	0.2	\$32.26	\$31.16	\$157.10	3%	X			X
95	Citrus Heights-Antelope Rd *	85	23	10.8	8.0	0.6	\$20.46	\$19.36	\$153.90	5%	X			X
170	Eastside Flyer	112	8	7.0	16.1	1.1	\$10.11	\$4.39	\$70.60	57%	X			
171	Westside Flyer	69	6	4.9	14.2	5.4	\$11.47	\$5.12	\$72.69	55%	X			
172	Central Flyer	95	8	7.3	13.0	5.5	\$12.48	\$5.67	\$73.95	55%	X			
173	Square Flyer	20	2	1.6	12.2	4.6	\$13.30	\$6.12	\$74.84	54%	X			
176	Cordovan - Anatolia	31	18	6.5	4.8	0.3	\$33.74	\$16.05	\$77.38	52%	X			X
177	Rancho Cordovan	117	58	7.1	16.5	1.2	\$9.85	\$3.90	\$64.48	60%	X			
178	Granite Shuttle	107	41	11.6	9.2	1.6	\$17.67	\$11.96	\$110.05	32%	X			X

Routes 85, 95 170, 171, 172, 173, 176, 177, and 178 are operated according to service agreements
 Contract revenue has been treated as fare revenue, reducing net cost and increasing farebox recovery
 Fixed and indirect overhead costs are included in all financial figures
 CBS cost figures based on fully allocated cost of \$162.66 per revenue hour (FY14 budget)
 Average fare assumed to be \$1.102 per boarding passenger (FY14 budget)
 List excludes CityRide dial-a-ride service launched 10/29/12
 * Indicates route with substantial changes in September 2012



Quarterly Ridership Report
 Period Ending December 31, 2013

Trend Analysis

Oct. 1 - Dec. 31

Average Daily Boardings

		Boardings Per Day				Revenue Hours Per Day				Boardings / Rev Hour	
		FY 2013	FY 2012	Variance	%	FY 2013	FY 2012	Variance	%	FY 2013	FY 2012
	Mon-Fri	49,361	48,410	950	2.0%	1,789	1,755	34	1.9%	27.6	27.6
	Saturday	19,584	18,357	1,227	6.7%	739	739	0	0.0%	26.5	24.8
	Sun/Hol	10,988	10,243	745	7.3%	483	483	0	0.0%	22.8	21.2
	CBS (Mon-Fri)	1,039	1,073	-34	-3.1%	88	88	0	0.0%	11.8	12.2
	Mon-Fri	45,958	49,516	-3,558	-7.2%	263	263	0	0.0%	174.8	188.4
	Saturday	18,731	17,689	1,042	5.9%	159	159	0	0.0%	117.9	111.3
	Sun/Hol	13,528	12,574	954	7.6%	138	138	0	0.0%	97.8	90.9
	Paratransit	843	835	9	1.0%	597	548	49	8.9%	1.41	1.52

		Boardings Per Day				Revenue Hours Per Day				Boardings / Rev Hour	
		FY 2013	FY 2012	Variance	%	FY 2013	FY 2012	Variance	%	FY 2013	FY 2012
Blue Line	Mon-Fri	24,316	26,266	-1,950	-7.4%	117	117	0	0.0%	208.2	224.9
	Saturday	9,250	8,256	994	12.0%	75	75	0	0.0%	124.0	110.7
	Sun/Hol	6,751	6,837	-86	-1.3%	65	65	0	0.0%	104.6	105.9
Gold Line	Mon-Fri	21,298	22,981	-1,683	-7.3%	131	131	0	0.0%	162.2	175.1
	Saturday	9,481	9,433	48	0.5%	84	84	0	0.0%	112.4	111.9
	Sun/Hol	6,777	5,738	1,040	18.1%	74	74	0	0.0%	91.8	77.7
Green Line	Mon-Fri	344	269	75	27.9%	15	15	0	0.0%	23.2	18.1

ADA paratransit data is for September, October, and November.
 In Sept. 2012 weekday light rail service hours were increased by 5.5 percent (additional two hours evening service)
 In Sept. 2012 Saturday light rail service hours were increased by 11.2 percent (additional two hours evening service)
 In Sept. 2012 weekday bus service was increased 6.2 percent (major service changes)
 CBS statistics exclude City Ride



Quarterly Ridership Report
Period Ending December 31, 2013

Trend Analysis

Bus - Weekdays

Average Daily Ridership

Route	Name	10/1/13 - 12/31/13			10/1/12 - 12/31/12			Variance		Rev Hrs	
		Boardings	Rev Hrs	Psg/Hr	Boardings	Rev Hrs	Psg/Hr	Boardings			
1	Greenback *	3,495	100	35	3,309	100	33	186	6%	0	0%
2	Riverside	510	25	20	548	25	22	-38	-7%	0	0%
3	Riverside Express	216	6	39	227	6	41	-11	-5%	0	0%
5	Meadowview-Valley Hi *	306	16	19	277	16	17	30	11%	0	0%
6	Land Park	379	25	15	386	25	15	-8	-2%	0	0%
7	Pocket Express	136	4	33	143	4	35	-8	-5%	0	0%
11	Truxel Road *	751	30	25	754	30	25	-4	0%	0	0%
13	Northgate	403	21	19	373	21	18	30	8%	0	2%
15	Rio Linda Blvd-O Street	1,534	53	29	1,580	54	29	-46	-3%	0	-1%
19	Rio Linda	977	41	24	1,026	41	25	-49	-5%	0	0%
21	Sunrise	1,532	68	23	1,394	67	21	138	10%	0	1%
22	Arden *	365	13	27	350	13	26	15	4%	0	0%
23	El Camino	2,440	81	30	2,579	80	32	-138	-5%	0	0%
24	Madison-Greenback	182	13	14	140	9	15	42	30%	4	41%
25	Marconi *	1,225	54	23	1,136	54	21	89	8%	0	0%
26	Fulton *	1,517	51	30	1,426	51	28	91	6%	0	0%
28	Fair Oaks-Folsom	271	25	11	279	25	11	-8	-3%	0	0%
29	Arden-California Avenue	139	4	36	143	4	37	-5	-3%	0	0%
30	J Street (DASH) *	2,215	85	26	2,151	85	25	64	3%	0	0%
34	McKinley *	282	26	11	334	26	13	-51	-15%	0	1%
38	P/Q Streets	586	30	20	624	30	21	-38	-6%	0	0%
51	Broadway-Stockton *	4,810	132	36	4,829	132	37	-19	0%	0	0%
54	Center Parkway *	669	26	26	632	26	24	37	6%	0	0%
55	Scottsdale *	931	35	26	784	35	22	147	19%	0	0%
56	Pocket-C.R.C.	2,276	51	45	2,139	51	42	138	6%	0	0%
61	Fruitridge	691	31	22	709	31	23	-18	-3%	0	0%
62	Freeport	1,474	61	24	1,471	61	24	3	0%	0	0%

* Indicates routes with major changes in September 2012



Quarterly Ridership Report
Period Ending December 31, 2013

Trend Analysis

Bus - Weekdays

Average Daily Ridership

Route	Name	10/1/13 - 12/31/13			10/1/12 - 12/31/12			Variance			
		Boardings	Rev Hrs	Psgr/Hr	Boardings	Rev Hrs	Psgr/Hr	Boardings	Rev Hrs	Boardings	Rev Hrs
65	Franklin South	380	27	14	388	27	14	-9	-2%	0	0%
67	Franklin	1,503	63	24	1,473	58	25	30	2%	5	9%
68	44th Street	1,581	65	24	1,627	58	28	-46	-3%	7	12%
72	Rosemont-Lincoln Village	1,249	50	25	1,227	50	25	21	2%	0	1%
74	International	267	16	17	310	16	20	-43	-14%	0	0%
75	Mather Field	205	6	32	202	6	32	4	2%	0	0%
80	Watt-Elkhorn	1,315	41	32	1,287	41	32	28	2%	0	0%
81	Florin-65th Street	3,763	104	36	3,450	102	34	313	9%	2	2%
82	Howe-65th Street	2,293	80	29	1,946	66	30	347	18%	15	22%
84	Watt Avenue-North Highlands	1,135	38	30	1,148	38	30	-14	-1%	0	0%
86	San Juan-Silver Eagle	1,674	57	29	1,680	57	29	-6	0%	0	0%
87	Howe	1,195	41	29	1,426	44	32	-231	-16%	-3	-6%
88	West El Camino	1,104	39	28	1,042	37	28	62	6%	2	5%
93	Hillsdale	1,180	47	25	1,235	47	26	-55	-4%	0	1%
103	Auburn Blvd	108	4	25	123	4	29	-15	-12%	0	0%
109	Hazel Express	99	4	26	105	4	28	-6	-6%	0	0%
TOTAL		49,361	1,789	28	48,410	1,755	28	950	2.0%	34	1.9%

* Indicates routes with major changes in September 2012



Quarterly Ridership Report
 Period Ending December 31, 2013

Trend Analysis

Bus - Saturday

Average Daily Ridership

Route Name	10/1/13 - 12/31/13			10/1/12 - 12/31/12			Variance			
	Boardings	Rev Hrs	Psgr/Hr	Boardings	Rev Hrs	Psgr/Hr	Boardings	Rev Hrs	Boardings	Rev Hrs
1 Greenback	1,224	43	28	1,226	43	28	-3	0%	0	0%
11 Truxel Road *	319	21	15	271	21	13	48	18%	0	n/a
15 Rio Linda Blvd-O Street	751	22	34	714	22	32	37	5%	0	0%
19 Rio Linda *	427	21	20	386	21	18	41	11%	0	0%
21 Sunrise	796	46	17	743	46	16	53	7%	0	0%
23 El Camino	1,746	61	29	1,691	61	28	54	3%	0	0%
25 Marconi *	559	21	27	467	21	23	92	20%	0	0%
26 Fulton	432	14	30	356	14	25	76	21%	0	0%
30 J Street (DASH)	639	29	22	611	29	21	28	5%	0	0%
38 P/Q Streets	245	19	13	233	19	12	12	5%	0	0%
51 Broadway-Stockton	2,210	60	37	2,118	60	35	91	4%	0	0%
54 Center Parkway *	177	13	14	169	13	13	8	5%	0	0%
55 Scottsdale	335	12	28	264	12	22	71	27%	0	0%
56 Pocket-C.R.C.	1,173	35	33	1,135	35	32	38	3%	0	0%
62 Freeport	438	33	13	419	33	13	19	5%	0	0%
67 Franklin	824	28	30	789	28	28	35	4%	0	0%
68 44th Street	834	28	30	789	28	28	45	6%	0	0%
72 Rosemont-Lincoln Village	358	14	25	339	14	24	19	6%	0	0%
75 Mather Field	128	8	15	134	8	16	-6	-5%	0	0%
80 Watt-Elkhorn	868	32	27	826	32	26	42	5%	0	0%
81 Florin-65th Street	1,781	57	31	1,589	57	28	192	12%	0	0%
82 Howe-65th Street	653	31	21	585	31	19	68	12%	0	0%
84 Watt Avenue-North Highlands	550	25	22	524	25	21	26	5%	0	0%
86 San Juan-Silver Eagle	665	22	30	620	22	28	45	7%	0	0%
87 Howe	545	14	38	479	14	33	66	14%	0	0%
88 West El Camino	441	15	30	406	15	27	35	9%	0	0%
93 Hillsdale	466	15	31	472	15	32	-6	-1%	0	0%
TOTAL	19,584	739	26	18,357	739	25	1,227	7%	0	0%



Quarterly Ridership Report
 Period Ending December 31, 2013

Trend Analysis

Bus - Sun/Hol

Average Daily Ridership

Route Name	10/1/13 - 12/31/13			10/1/12 - 12/31/12			Variance			
	Boardings	Rev Hrs	Psgr/Hr	Boardings	Rev Hrs	Psgr/Hr	Boardings	Rev Hrs		
1 Greenback	829	44	19	795	44	18	34	4%	0	0%
15 Rio Linda Blvd-O Street	484	23	21	464	23	21	20	4%	0	0%
19 Rio Linda *	327	20	16	307	20	15	20	7%	0	0%
21 Sunrise	471	32	15	432	32	13	39	9%	0	0%
23 El Camino	1,016	39	26	990	39	25	26	3%	0	0%
26 Fulton	258	11	23	220	11	20	39	18%	0	0%
30 J Street (DASH)	314	15	21	314	15	21	0	0%	0	0%
38 P/Q Streets	185	15	12	169	15	11	16	9%	0	0%
51 Broadway-Stockton	1,381	42	33	1,329	42	32	52	4%	0	0%
55 Scottsdale	191	11	18	163	11	15	28	17%	0	0%
56 Pocket-C.R.C.	642	19	34	624	19	33	19	3%	0	0%
67 Franklin	527	28	19	511	28	18	16	3%	0	0%
68 44th Street	611	28	22	572	28	20	39	7%	0	0%
72 Rosemont-Lincoln Village	233	13	17	208	13	15	25	12%	0	0%
75 Mather Field	96	8	12	105	8	14	-9	-8%	0	0%
80 Watt-Elkhorn	703	24	29	574	24	23	128	22%	0	0%
81 Florin-65th Street	928	28	33	814	28	29	114	14%	0	0%
82 Howe-65th Street	470	28	17	414	28	15	56	14%	0	0%
86 San Juan-Silver Eagle	395	16	25	370	16	23	24	6%	0	0%
87 Howe	300	10	29	264	10	25	36	14%	0	0%
88 West El Camino	315	13	24	267	13	21	48	18%	0	0%
93 Hillsdale	310	15	21	335	15	23	-25	-8%	0	0%
TOTAL	10,988	483	23	10,243	483	21	745	7%	0	0%

* Indicates routes with major changes in September 2012



Quarterly Ridership Report
Period Ending December 31, 2013

Trend Analysis

CBS - Weekdays

Average Daily Ridership

Route	Name	10/1/13 - 12/31/13			10/1/12 - 12/31/12			Variance		Boardings	Rev Hrs	Psgr/Hr
		Boardings	Rev Hrs	Psgr/Hr	Boardings	Rev Hrs	Psgr/Hr	Boardings	Rev Hrs			
33	Dos Rios	169	11	15	255	11	22	-86	-34%	0	0%	
47	Phoenix Park	202	14	15	217	14	16	-15	-7%	0	0%	
85	McClellan Shuttle	32	6	5	35	6	5	-3	-8%	0	0%	
95	Citrus Heights-Antelope Rd *	85	11	8	59	11	5	27	45%	0	0%	
170	Eastside Flyer	112	7	16	110	7	16	2	2%	0	0%	
171	Westside Flyer	69	5	14	50	5	10	20	39%	0	0%	
172	Central Flyer	95	7	13	126	7	17	-31	-25%	0	0%	
173	Square Flyer	20	2	12	6	2	4	14	245%	0	0%	
176	Cordovan - Anatolia *	31	7	5	26	7	4	5	19%	0	0%	
177	Rancho Cordovan *	117	7	17	103	7	14	14	14%	0	0%	
178	Granite Shuttle	107	12	9	86	12	7	20	23%	0	0%	
TOTAL		1,039	88	12	1,073	88	12	-34	-3%	0	0%	

* Indicates routes with major changes in September 2012



Quarterly Ridership Report
Period Ending December 31, 2013



Light Rail Ridership Trends

Blue Line - Weekdays

Average Daily Ridership

BLUE LINE - TOTAL	Year Ended ¹ 6/30/09		Year Ended ² 6/30/10		Year Ended 6/30/11		Year Ended 6/30/12		Year Ended 6/30/13		FY14 Q4 10/1/13 - 12/31/13		Percent Change FY13 to FY14 Q4	
	On	Off	On	Off	On	Off	On	Off	On	Off	On	Off	On	Off
WATT / I-80	2,487	2,295	2,111	2,087	1,785	1,825	2,164	2,108	2,157	2,088	2,140	2,121	-1%	2%
WATT I-80 WEST	96	216	102	161	143	150	116	116	131	127	135	177	3%	39%
ROSEVILLE RD	699	1,178	634	1,035	677	713	633	736	633	635	585	671	-8%	6%
MARCONI / ARCADE	1,262	934	999	928	827	716	916	870	1,057	959	1,007	1,125	-5%	17%
SWANSTON	416	417	313	267	271	294	269	299	313	304	353	492	13%	62%
ROYAL OAKS	751	707	547	437	429	398	515	417	588	539	585	539	0%	0%
ARDEN / DEL PASO	1,644	1,917	1,605	1,777	1,186	1,366	1,361	1,606	1,297	1,457	1,455	1,431	12%	-2%
GLOBE AVENUE	317	374	309	320	243	253	296	301	297	288	364	304	23%	6%
ALKALI FLAT / LA VALENTINA	1,805	1,402	1,256	1,199	920	948	949	978	1,086	1,020	1,132	1,055	4%	3%
12TH & I STREETS	732	711	639	677	512	551	612	662	504	591	568	576	13%	-3%
CATHEDRAL SQUARE	1,203	1,295	998	1,111	885	893	846	939	743	927	777	749	5%	-19%
7TH / 9TH & K	3,136	2,972	2,629	2,156	1,825	1,652	2,022	1,887	1,921	1,890	1,968	1,846	2%	-2%
7TH / 8TH & CAPITOL	1,061	955	967	753	701	616	673	629	611	637	637	634	4%	0%
8TH & O STREETS	891	714	855	653	754	668	763	679	675	693	704	684	4%	-1%
ARCHIVES PLAZA	730	521	619	511	478	484	519	487	489	491	482	463	-1%	-6%
13TH STREET	398	541	446	496	346	392	429	416	508	472	553	450	9%	-5%
16TH STREET	2,758	2,850	2,454	2,564	1,767	1,982	2,213	2,396	2,008	2,225	2,091	2,312	4%	4%
BROADWAY	1,218	1,503	1,073	1,127	863	924	1,030	930	1,034	1,012	1,039	951	0%	-6%
4TH/WAYNE HULTGREN	677	812	850	656	637	570	760	577	684	594	718	542	5%	-9%
CITY COLLEGE	1,795	1,896	1,923	2,061	1,433	1,393	1,757	1,682	1,689	1,789	1,793	1,744	6%	-3%
FRUITRIDGE	822	762	654	633	535	552	675	682	642	618	601	514	-6%	-17%
47TH AVE	673	718	626	721	649	576	717	728	763	682	697	719	-9%	5%
FLORIN	2,322	2,085	1,672	1,902	1,383	1,341	1,508	1,723	1,606	1,631	1,618	1,772	1%	9%
MEADOWVIEW	3,456	3,575	3,050	3,098	2,443	2,437	2,813	2,706	2,774	2,542	2,347	2,484	-15%	-2%
	31,349	31,349	27,331	27,331	21,693	21,692	24,555	24,555	24,209	24,210	24,350	24,352	1%	1%

1 FY 2009 is actually FY 2009 Q4 data only. Full year total was 31,667.

2 FY 2010 data ends on 6/20/10 when major service changes were adopted



Quarterly Ridership Report
Period Ending December 31, 2013



Light Rail Ridership Trends

Gold Line - Weekdays

Average Daily Ridership

GOLD LINE - TOTAL	Year Ended ¹ 6/30/09		Year Ended ² 6/30/10		Year Ended 6/30/11		Year Ended 6/30/12		Year Ended 6/30/13		FY14 Q4 10/1/13 - 12/31/13		Percent Change FY13 to FY14 Q4	
	On	Off	On	Off	On	Off	On	Off	On	Off	On	Off	On	Off
SAC VALLEY	749	951	741	619	490	561	504	482	387	363	455	328	18%	-10%
7TH & I	715	-	636	-	379	34	375	22	359	9	377	30	5%	225%
8TH & H	-	-	-	-	-	-	55	304	23	279	18	247	-22%	-12%
7TH & K	-	-	687	13	886	61	1,047	47	1,002	46	942	57	-6%	25%
8TH & K	-	1,922	-	1,972	80	1,585	71	1,567	39	1,351	41	1,232	4%	-9%
7TH / 8TH & CAPITOL	1,716	557	982	460	633	649	610	572	483	511	511	453	6%	-11%
8TH & O STREETS	1,165	672	946	632	911	767	871	832	732	714	780	572	7%	-20%
ARCHIVES PLAZA	1,085	618	897	628	723	745	691	699	628	660	674	589	7%	-11%
13TH STREET	780	648	718	526	536	460	524	484	627	538	528	511	-16%	-5%
16TH STREET	3,139	2,368	2,974	2,476	2,168	2,169	2,437	2,367	2,146	2,317	2,029	2,321	-5%	0%
23RD STREET	809	911	763	773	625	610	661	580	573	571	583	537	2%	-6%
29TH STREET	2,235	2,238	2,079	1,919	1,597	1,622	1,817	1,684	1,767	1,571	1,676	1,547	-5%	-2%
39TH STREET	504	525	386	340	355	310	353	307	396	321	354	312	-11%	-3%
48TH STREET	209	340	241	232	194	237	204	227	206	231	199	221	-3%	-5%
59TH STREET	391	259	365	291	255	294	303	245	308	287	277	206	-10%	-28%
65TH STREET	1,945	2,544	1,826	1,920	1,523	1,520	1,670	1,762	1,678	1,708	1,655	1,739	-1%	2%
POWER INN ROAD	1,108	1,321	1,181	1,201	832	806	846	806	796	770	684	750	-14%	-3%
COLLEGE GREENS	1,153	973	856	878	769	752	823	779	795	736	834	718	5%	-2%
WATT / MANLOVE	1,299	1,483	1,318	1,665	1,185	1,170	1,214	1,330	1,256	1,333	1,230	1,260	-2%	-5%
STARFIRE	575	889	605	628	439	358	511	388	480	416	363	390	-24%	-6%
TIBER	384	420	388	461	307	323	372	383	358	390	329	394	-8%	1%
BUTTERFIELD	817	664	741	790	677	662	737	705	690	719	797	726	16%	1%
MATHER FIELD / MILLS	2,581	2,279	2,048	2,350	1,600	1,632	1,762	1,914	1,814	1,844	1,881	1,827	4%	-1%
ZINFANDEL	1,034	1,064	1,236	1,201	878	833	942	921	1,040	1,010	1,118	1,186	7%	17%
CORDOVA TOWN CTR	654	638	788	781	652	601	684	698	661	602	624	626	-6%	4%
SUNRISE	823	938	972	1,111	836	825	840	909	883	862	832	835	-6%	-3%
HAZEL	189	285	187	445	199	190	215	239	209	192	207	182	-1%	-5%
IRON POINT	419	643	363	593	446	466	481	537	473	497	510	524	8%	5%
GLENN	264	436	256	360	325	308	289	294	284	247	270	299	-5%	21%
HIST FOLSOM	433	590	582	495	512	460	533	510	508	511	407	560	-20%	10%
	27,175	27,175	25,760	25,759	21,009	21,010	22,443	22,591	21,602	21,608	21,185	21,180	-2%	-2%

1 FY 2009 data is actually Q4 stop-level data adjusted to match full year totals.

2 FY 2010 data ends on 6/20/10 when major service changes were adopted



Quarterly Ridership Report
 Period Ending December 31, 2013



Light Rail Ridership Trends

Green Line - Weekdays

Average Daily Ridership

GREEN LINE - TOTAL	AM Peak (6:00 - 9:00a)		Midday (9:01a - 3:29p)		PM Peak (3:30 - 6:00p)		Other Weekday (<6:00a or >6:00p)		Total Weekday	
	On	Off	On	Off	On	Off	On	Off	On	Off
RICHARDS BLVD	17	18	50	45	21	24	5	9	93	97
7TH & I	1	1	7	11	4	8	0	1	13	21
7TH & K	3	6	16	23	6	9	2	2	28	39
7TH / 8TH & CAPITOL	2	4	13	8	3	2	2	1	20	14
8TH & O STREETS	6	3	15	13	6	5	1	3	28	24
ARCHIVES PLAZA	7	6	22	12	12	1	2	0	42	19
13TH STREET	8	10	32	47	13	18	1	5	54	80
8TH & K	6	3	21	23	11	10	5	3	44	39
8TH & H	5	2	9	4	4	6	4	0	22	12
	54	54	186	186	82	82	22	22	344	344