

---



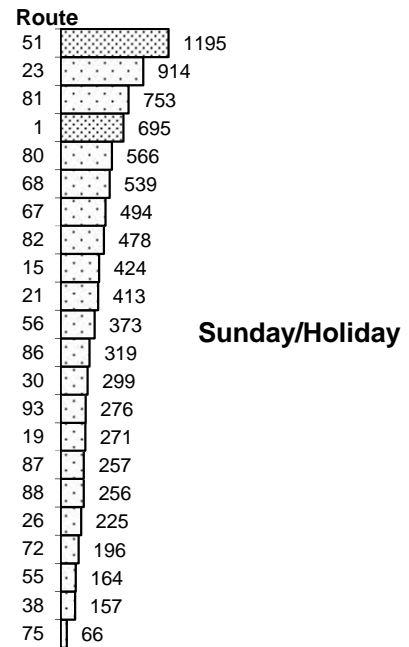
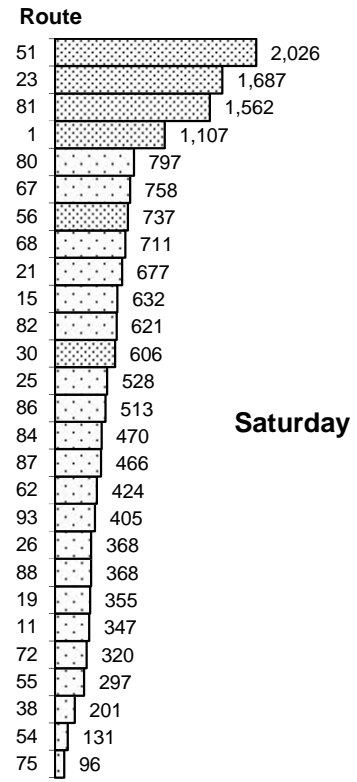
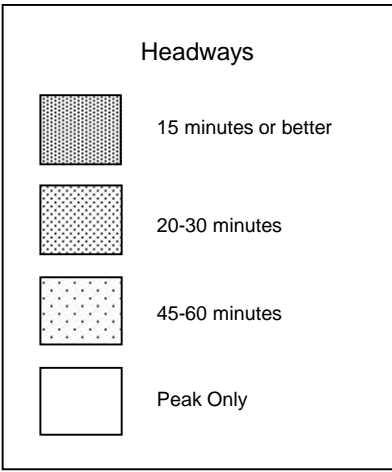
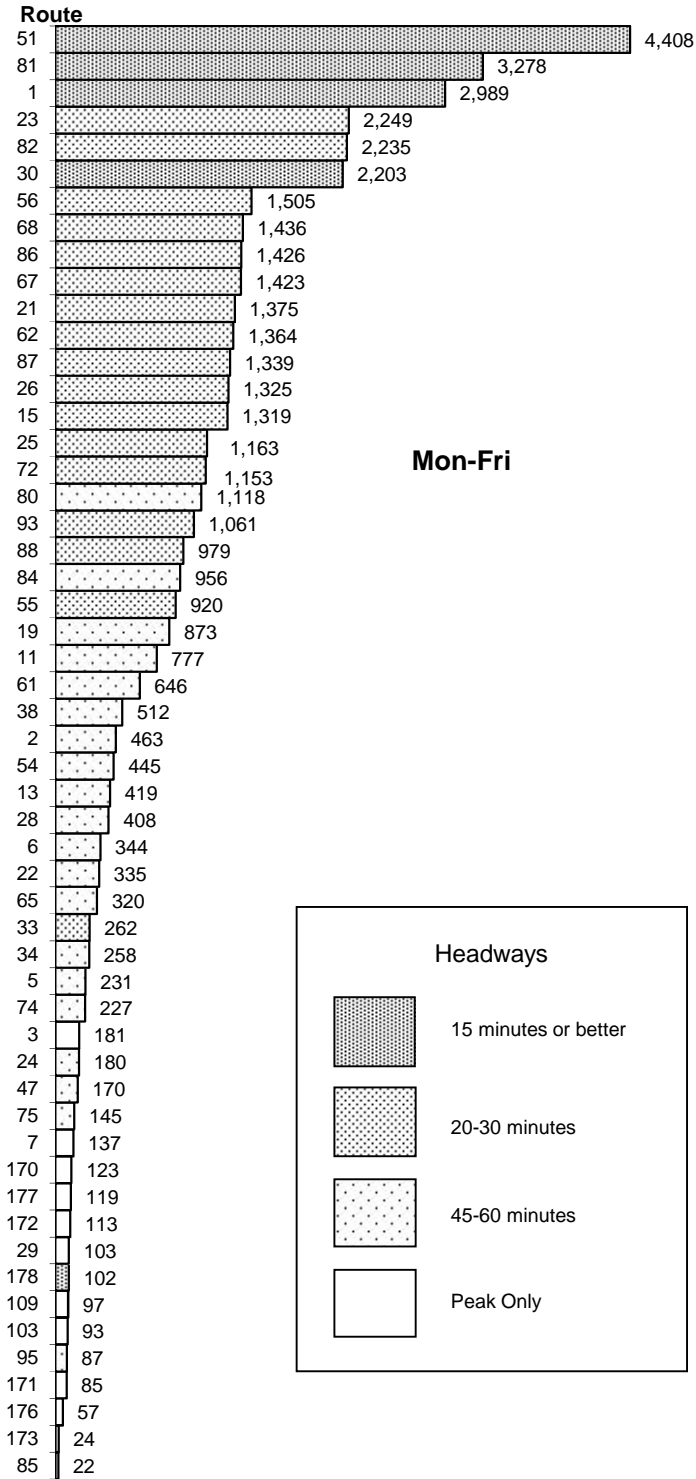
**Regional Transit**  
Quarterly Ridership Report  
Period Ending December 31, 2015  
*(Post-September Service Changes)*

---



Quarterly Ridership Report  
 Period Ending December 31, 2015

**RT Bus Routes**  
**Average Daily Boardings**



**Performance Monitoring**
**Monday-Friday**

Minimum productivity standards for regular weekday bus routes are **27.0 boardings per service hour**. Low-productivity routes are reviewed by staff for possible corrective action. Newly created routes that do not meet minimum productivity standards within two years are subject to automatic elimination pursuant to RT's route sunset process.

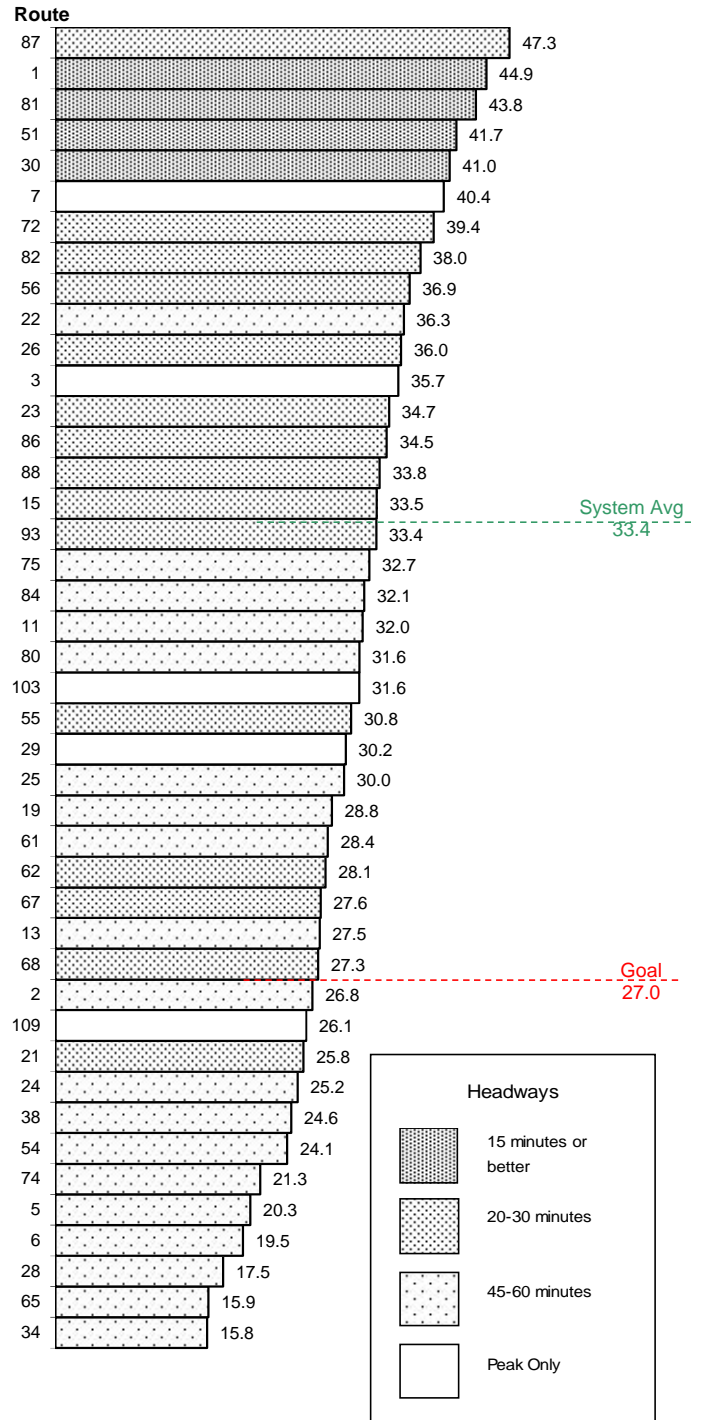
---

**Routes Below Standard**

Route	Name	Quarters
2	Riverside	2 qtrs.
5	Meadowview/Valley Hi	4 qtrs.
6	Land Park	14 qtrs.
21	Sunrise	2 qtrs.
24	Madison-Greenback	2 qtrs.
28	Fair Oaks/Butterfield	14 qtrs.
34	McKinley	14 qtrs.
38	P/Q Streets	11 qtrs.
54	Center Parkway	3 qtrs.
65	Franklin-Univ/65th	1 qtr.
74	International	14 qtrs.
109	Hazel Express	2 qtrs.

**Notes:**

- Note that productivity standards alone do not determine which routes are considered for modification. Consideration of corrective action is based on multiple factors, of which productivity is one.
- Routes 6, 34, 38 and 74 have been consistently below productivity standards.
- Route 28 continues to remain below standard; however, total ridership on the route has been trending positively since service changes were implemented in April 2015.
- The recent decline in productivity on Route 65 is likely due to the service changes that were implemented on the route beginning in this reporting period (9/6/15).

**Boardings Per Service Hour**


9/6/15 – 12/31/15

**Performance Monitoring**
**Saturday**

Minimum productivity standards for Saturday bus routes are **20.0 boardings per service hour**. Low-productivity routes are reviewed by staff for possible corrective action. Newly created routes that do not meet minimum productivity standards within two years are subject to automatic elimination pursuant to RT's route sunset process.

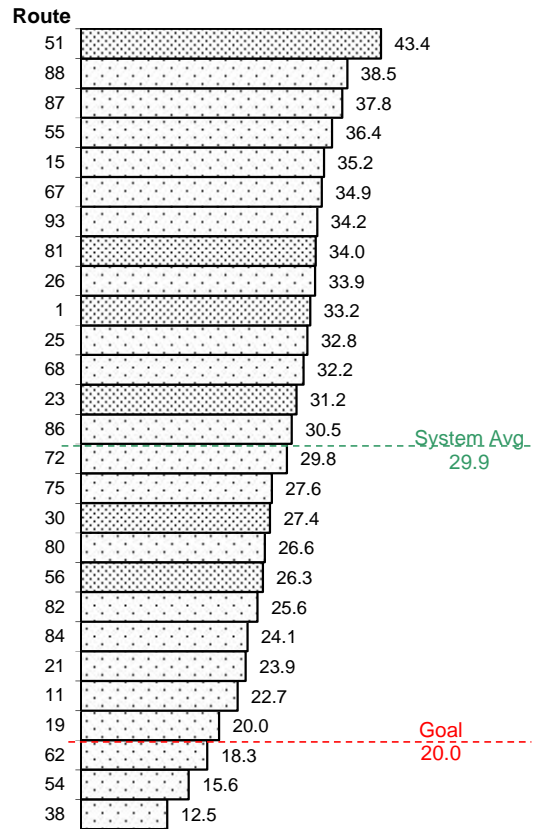
---

**Routes Below Standard**

Route	Name	Quarters
38	P/Q Streets	14 qtrs.
54	Center Parkway	3 qtrs.
62	Freeport	14 qtrs.

**Notes:**

- Routes 38 and 62 have been consistently below productivity standards.

**Boardings Per Service Hour**


9/6/15 – 12/31/15

Quarterly Ridership Report  
 Period Ending December 31, 2015

**Performance Monitoring**
**Sunday/Holiday**

Minimum productivity standards for Sunday/Holiday bus routes are **20.0 boardings per service hour**. Low-productivity routes are reviewed by staff for possible corrective action. Newly created routes that do not meet minimum productivity standards within two years are subject to automatic elimination pursuant to RT's route sunset process.

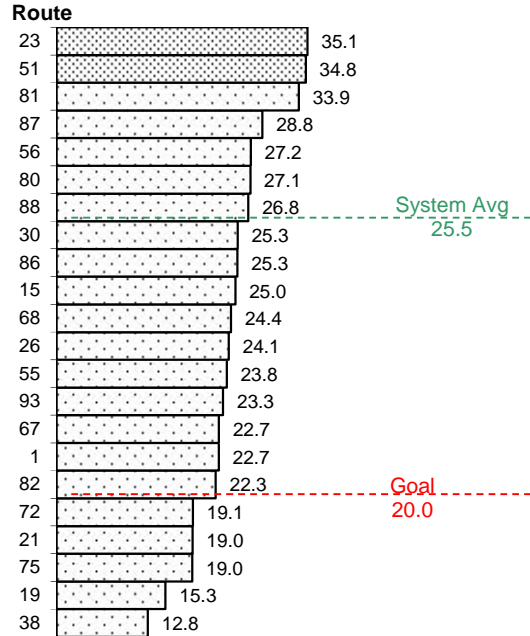
---

**Routes Below Standard**

Route	Name	Quarters
19	Rio Linda	7 qtrs.
21	Sunrise	2 qtrs.
38	P/Q Streets	14 qtrs.
72	Rosemont-Lincoln Village	2 qtrs.
75	Mather	1 qtr.

**Notes:**

- Route 38 has been consistently below productivity standards.

**Boardings Per Service Hour**


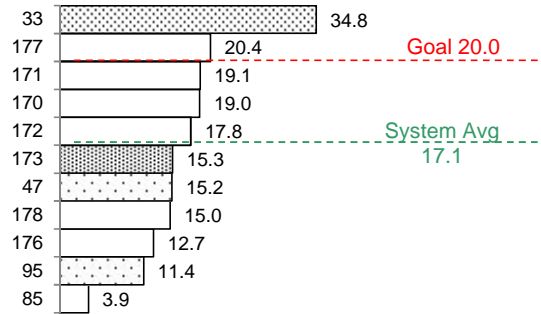
9/6/15 – 12/31/15

**Performance Monitoring**
**Community Bus Service**

Minimum productivity standards for CBS routes are **20.0 boardings per service hour**. CBS routes supported by a third-party subsidy are considered to be meeting standards if the net operating cost does not exceed **\$8.29 per passenger**. Low-productivity routes are reviewed by staff for possible corrective action. Newly created routes that do not meet minimum productivity standards within two years are subject to automatic elimination pursuant to RT's route sunset process.

---

Route	Name	Contract	Quarters
47	Phoenix Park	No	7 qtrs.
85	McClellan Shuttle	Yes	14 qtrs.
95	Citrus Hts. - Antelope Rd	No	13 qtrs.
170	Natomas Flyer Eastside	Yes	8 qtrs.
171	Natomas Flyer Westside	Yes	6 qtrs.
172	Natomas Flyer Central	Yes	1 qtr.
173	Natomas Flyer Square	Yes	7 qtrs.
176	Cordovan - Anatolia	Yes	14 qtrs.
178	Granite Shuttle	Yes	14 qtrs.

**Boardings Per Revenue Hour**
**Routes**


9/6/15 – 12/31/15

**Notes:**

- Routes 85, 170-173, and 176-178 are operated according to agreements with outside parties.
- Based on level-of-service commitments to the City of Citrus Heights and lack of superior cost-constrained alternatives, Route 95 was exempted from the sunset process in December 2014. Minor changes to Route 95 were implemented in April 2015.

Quarterly Ridership Report  
 Period Ending December 31, 2015

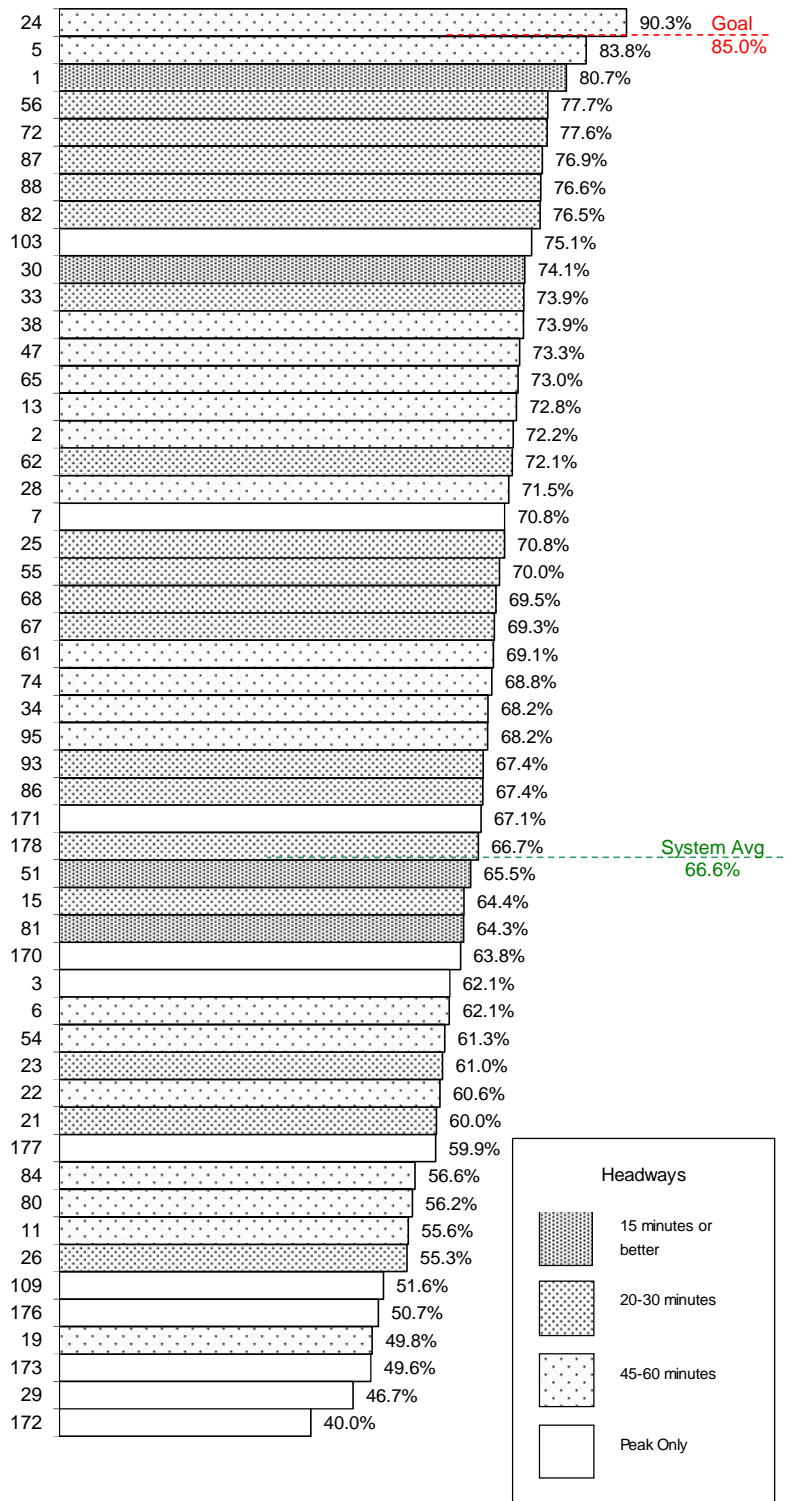
**Weekday Bus and CBS Routes**

On-time performance is measured at time points, which are major stops shown on the public schedule (usually 4-6 per route).

A bus is considered on-time if it leaves its time point 0-4:59 minutes late. On-time performance indicates the percent of time points where the bus was on-time according to this definition.

---

Changes to reported on-time performance may be due to a recent modification made with reporting late trips. Prior to July 1, 2015, a bus was considered on-time if it left its time point 0-5:59 minutes late; however, that time frame did not match the on-time definition per RT's Service Standards policy, which is now accurately reflected as 0-4:59 minutes.

**On-Time Performance**


9/6/15 – 12/31/15



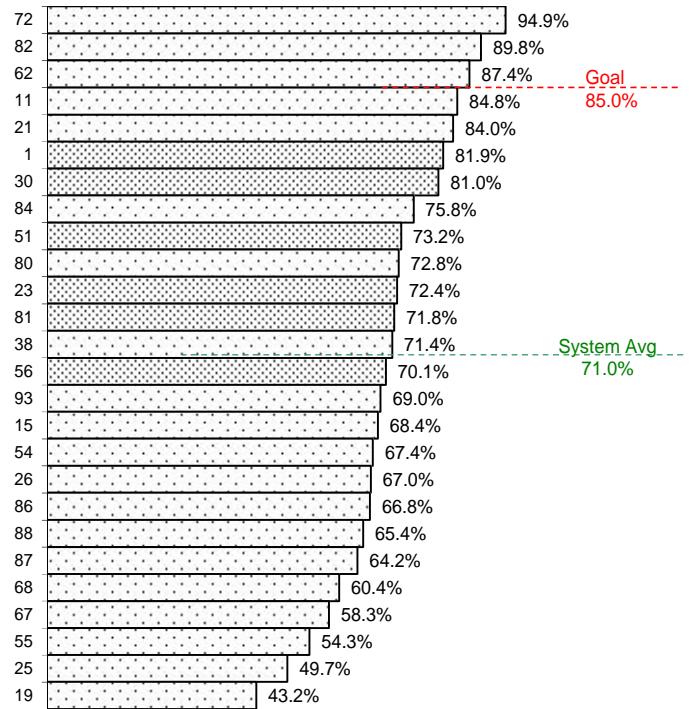
Quarterly Ridership Report  
 Period Ending December 31, 2015

**Saturday Bus Routes**

On-time performance is measured at time points, which are major stops shown on the public schedule (usually 4-6 per route).

A bus is considered on-time if it leaves its time point 0-4:59 minutes late. On-time performance indicates the percent of time points where the bus was on-time according to this definition.

---

**On-Time Performance**


9/6/15 – 12/31/15

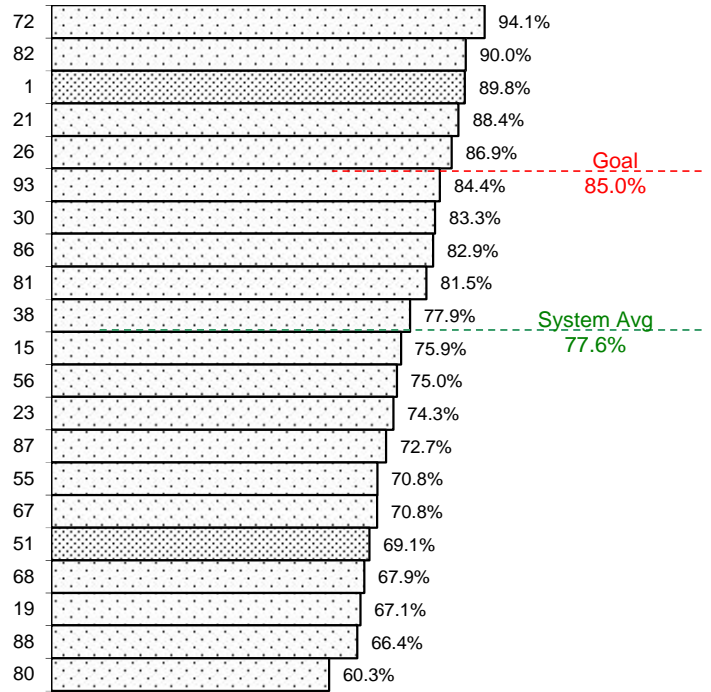
Quarterly Ridership Report  
Period Ending December 31, 2015

**Sunday/Holiday Bus Routes**

On-time performance is measured at time points, which are major stops along the route and shown on the public schedule (usually 4-6 per route).

A bus is considered on-time if it leaves its time point 0-4:59 minutes late. On-time performance indicates the percent of time points where the bus was on-time according to this definition.

---

**On-Time Performance**


9/6/15 – 12/31/15

**Light Rail On-Time Departures**

Light rail on-time performance is measured at trip start points. A one-way trip is considered on-time if it departs 0-5 minutes late. The goal is 97.0 percent on-time departures.

Blue Line on-time performance decreased slightly to 97.2 percent. Gold Line remained the same at 98.6 percent. Green Line decreased to 96.3 percent.

	Blue	Gold	Green
2014-Q1	98.9%	99.1%	98.9%
2014-Q2	98.3%	99.1%	97.7%
2014-Q3	98.8%	99.1%	99.6%
2014-Q4	98.2%	98.7%	99.2%
2015-Q1	98.0%	98.6%	97.9%
2015-Q2	97.8%	98.3%	95.9%
2015-Q3	97.6%	98.6%	98.6%
<b>2015-Q4</b>	<b>97.2%</b>	<b>98.6%</b>	<b>96.3%</b>

Quarterly Ridership Report  
 Period Ending December 31, 2015


# Weekday Bus Ridership

9/6/15 - 12/31/15

Route	Name	Boardings Per Day	Trips Per Day	Serv Hrs Per Day	Rev Hrs Per Day	(Goal = 27)	Full Cost Per Psgr	Net Cost Per Psgr	Farebox Recovery	Below Standards
						Psg'r Per Serv Hr				
87	Howe	1,339	55	28.3	41.3	47.3	\$4.44	\$3.36	24%	
1	Greenback	2,989	121	66.6	100.1	44.9	\$4.83	\$3.75	22%	
81	Florin-65th Street	3,278	119	74.9	104.2	43.8	\$4.58	\$3.51	24%	
51	Broadway-Stockton	4,408	143	105.6	132.2	41.7	\$4.33	\$3.25	25%	
30	J Street (DASH)	2,203	116	53.7	84.5	41.0	\$5.54	\$4.46	19%	
7	Pocket Express	137	6	3.4	4.1	40.4	\$4.32	\$3.24	25%	
72	Rosemont-Lincoln Village	1,153	63	29.3	44.1	39.4	\$5.52	\$4.44	20%	
82	Howe-65th Street	2,235	66	58.8	80.2	38.0	\$5.18	\$4.10	21%	
56	Pocket-C.R.C.	1,505	66	40.8	49.0	36.9	\$4.70	\$3.62	23%	
22	Arden	335	28	9.2	13.4	36.3	\$5.76	\$4.68	19%	
26	Fulton	1,325	52	36.8	51.4	36.0	\$5.60	\$4.52	19%	
3	Riverside Express	181	8	5.1	5.3	35.7	\$4.26	\$3.18	25%	
23	El Camino	2,249	65	64.8	83.8	34.7	\$5.38	\$4.30	20%	
86	San Juan-Silver Eagle	1,426	61	41.3	57.5	34.5	\$5.82	\$4.74	19%	
88	West El Camino	979	59	29.0	40.4	33.8	\$5.95	\$4.87	18%	
15	Rio Linda Blvd-O Street	1,319	56	39.4	53.1	33.5	\$5.80	\$4.73	19%	
93	Hillsdale	1,061	55	31.8	48.8	33.4	\$6.63	\$5.55	16%	
75	Mather Field	145	14	4.4	10.0	32.7	\$10.00	\$8.92	11%	
84	Watt Avenue-North Highlands	956	28	29.8	36.8	32.2	\$5.56	\$4.48	19%	
11	Truxel Road	777	43	24.3	31.6	32.0	\$5.87	\$4.79	18%	
80	Watt-Elkhorn	1,118	32	35.4	42.1	31.6	\$5.43	\$4.35	20%	
103	Auburn Blvd	93	8	2.9	4.4	31.6	\$6.90	\$5.82	16%	
55	Scottsdale	920	52	29.9	38.1	30.8	\$5.97	\$4.89	18%	
29	Arden-California Avenue	103	4	3.4	3.8	30.2	\$5.38	\$4.30	20%	
25	Marconi	1,163	55	38.8	53.8	30.0	\$6.67	\$5.59	16%	
19	Rio Linda	873	29	30.4	40.8	28.8	\$6.74	\$5.66	16%	
61	Fruitridge	646	31	22.8	30.6	28.4	\$6.82	\$5.75	16%	
62	Freeport	1,364	60	48.5	61.3	28.1	\$6.48	\$5.40	17%	
67	Franklin	1,423	58	51.6	64.3	27.6	\$6.51	\$5.44	17%	
13	Northgate	419	31	15.2	19.0	27.5	\$6.55	\$5.47	16%	
68	44th Street	1,436	59	52.5	66.4	27.3	\$6.67	\$5.59	16%	
2	Riverside	463	26	17.3	25.3	26.8	\$7.89	\$6.81	14%	X
109	Hazel Express	97	4	3.7	3.8	26.1	\$5.65	\$4.57	19%	X
21	Sunrise	1,375	70	53.3	67.6	25.8	\$7.10	\$6.02	15%	X
24	Madison-Greenback	180	27	7.1	13.0	25.2	\$10.42	\$9.34	10%	X
38	P/Q Streets	512	29	20.8	28.0	24.6	\$7.90	\$6.82	14%	X
54	Center Parkway	445	31	18.5	29.0	24.1	\$9.39	\$8.32	11%	X
74	International	227	29	10.7	17.9	21.3	\$11.39	\$10.31	9%	X
5	Meadowview-Valley Hi	231	31	11.4	15.1	20.3	\$9.47	\$8.39	11%	X
6	Land Park	344	27	17.6	26.4	19.5	\$11.08	\$10.00	10%	X
28	Fair Oaks-Folsom	408	32	23.4	30.7	17.5	\$10.87	\$9.79	10%	X
65	Franklin South	320	28	20.1	27.4	15.9	\$12.39	\$11.31	9%	X
34	McKinley	258	27	16.4	26.3	15.8	\$14.69	\$13.61	7%	X
TOTAL		44,419	2,004	1,329	1,807	33.4				

Quarterly Ridership Report  
 Period Ending December 31, 2015


# Saturday Bus Ridership

9/6/15 - 12/31/15

Route	Name	Boardings	Trips	Serv Hrs	Rev Hrs	(Goal = 20) Psgr Per	Full Cost	Net Cost	Farebox	Below
		Per Day	Per Day	Per Day	Per Day	Serv Hr				
51	Broadway-Stockton	2,026	68	46.7	64.1	43.4	\$4.56	\$3.49	24%	
88	West El Camino	368	26	9.5	14.9	38.6	\$5.84	\$4.76	18%	
87	Howe	466	29	12.3	14.9	37.8	\$4.60	\$3.52	23%	
55	Scottsdale	297	19	8.2	11.8	36.4	\$5.73	\$4.65	19%	
15	Rio Linda Blvd-O Street	632	29	18.0	21.3	35.2	\$4.87	\$3.79	22%	
67	Franklin	758	28	21.7	28.2	34.9	\$5.36	\$4.28	20%	
93	Hillsdale	405	22	11.9	14.6	34.2	\$5.20	\$4.12	21%	
81	Florin-65th Street	1,562	60	46.0	59.0	34.0	\$5.45	\$4.38	20%	
26	Fulton	368	21	10.9	15.2	33.9	\$5.95	\$4.87	18%	
1	Greenback	1,107	66	33.4	45.6	33.2	\$5.94	\$4.86	18%	
25	Marconi	528	21	16.1	20.6	32.8	\$5.63	\$4.55	19%	
68	44th Street	711	28	22.1	28.1	32.2	\$5.70	\$4.62	19%	
23	El Camino	1,687	53	54.1	64.1	31.2	\$5.48	\$4.40	20%	
86	San Juan-Silver Eagle	513	28	16.8	21.6	30.5	\$6.06	\$4.98	18%	
72	Rosemont-Lincoln Village	320	23	10.7	14.1	29.8	\$6.34	\$5.26	17%	
75	Mather Field	96	11	3.5	8.3	27.6	\$12.37	\$11.29	9%	
30	J Street (DASH)	606	53	22.2	28.9	27.4	\$6.87	\$5.79	16%	
80	Watt-Elkhorn	797	29	30.0	36.2	26.6	\$6.56	\$5.48	16%	
56	Pocket-C.R.C.	737	55	28.0	37.3	26.3	\$7.30	\$6.22	15%	
82	Howe-65th Street	621	31	24.3	30.7	25.6	\$7.13	\$6.05	15%	
84	Watt Avenue-North Highlands	470	20	19.5	24.8	24.1	\$7.62	\$6.54	14%	
21	Sunrise	677	42	28.4	45.9	23.9	\$9.78	\$8.71	11%	
11	Truxel Road	347	26	15.3	21.3	22.7	\$8.85	\$7.78	12%	
19	Rio Linda	355	20	17.8	21.2	20.0	\$8.62	\$7.54	13%	
62	Freeport	424	29	23.2	32.8	18.3	\$11.16	\$10.08	10%	X
54	Center Parkway	131	24	8.4	12.7	15.6	\$13.98	\$12.90	8%	X
38	P/Q Streets	201	25	16.2	19.3	12.5	\$13.81	\$12.74	8%	X
TOTAL		17,210	886	575	757	29.9				

Costing factors and average fare assumptions from FY 2016 operating budget

Quarterly Ridership Report  
 Period Ending December 31, 2015


## Sun/Hol Bus Ridership

9/6/15 - 12/31/15

Route	Name	Boardings	Trips	Serv Hrs	Rev Hrs	(Goal = 20) Psgr Per	Full Cost Per Psgr	Net Cost Per Psgr	Farebox Recovery	Below Standards
		Per Day	Per Day	Per Day	Per Day	Serv Hr				
23	El Camino	914	28	26.0	39.3	35.1	\$6.20	\$5.12	17%	
51	Broadway-Stockton	1,195	50	34.3	41.9	34.8	\$5.06	\$3.98	21%	
81	Florin-65th Street	753	29	22.2	28.5	33.9	\$5.46	\$4.38	20%	
87	Howe	257	21	8.9	11.2	28.8	\$6.27	\$5.19	17%	
56	Pocket-C.R.C.	373	27	13.7	19.0	27.2	\$7.34	\$6.26	15%	
80	Watt-Elkhorn	566	23	20.9	24.5	27.1	\$6.24	\$5.16	17%	
88	West El Camino	256	26	9.5	12.9	26.8	\$7.30	\$6.22	15%	
30	J Street (DASH)	299	28	11.8	14.8	25.3	\$7.13	\$6.05	15%	
86	San Juan-Silver Eagle	319	21	12.6	15.6	25.3	\$7.06	\$5.98	15%	
15	Rio Linda Blvd-O Street	424	26	17.0	22.4	25.0	\$7.60	\$6.52	14%	
68	44th Street	539	28	22.1	28.1	24.4	\$7.52	\$6.45	14%	
26	Fulton	225	20	9.3	11.4	24.1	\$7.30	\$6.22	15%	
55	Scottsdale	164	16	6.9	10.9	23.8	\$9.56	\$8.48	11%	
93	Hillsdale	276	22	11.9	14.5	23.3	\$7.56	\$6.49	14%	
67	Franklin	494	28	21.7	27.8	22.7	\$8.11	\$7.03	13%	
1	Greenback	695	63	30.6	43.6	22.7	\$9.05	\$7.97	12%	
82	Howe-65th Street	478	28	21.4	27.5	22.3	\$8.31	\$7.23	13%	
72	Rosemont-Lincoln Village	196	22	10.3	13.4	19.1	\$9.90	\$8.82	11%	X
21	Sunrise	413	30	21.7	32.9	19.0	\$11.48	\$10.40	9%	X
75	Mather Field	66	11	3.5	7.8	19.0	\$16.92	\$15.84	6%	X
19	Rio Linda	271	20	17.8	20.3	15.3	\$10.83	\$9.75	10%	X
38	P/Q Streets	157	20	12.3	14.6	12.8	\$13.42	\$12.34	8%	X
TOTAL		9,330	587	366	483	25.5				

Costing factors and average fare assumptions from FY 2016 operating budget

Quarterly Ridership Report  
 Period Ending December 31, 2015

**CBS Ridership**

9/6/15 - 12/31/15

Route	Name	Boardings	Trips	Serv Hrs	Rev Hrs	Psg Per	Full Cost	Net Cost	Farebox	Contract	Below
		Per Day	Per Day	Per Day	Per Day	Serv Hr	Per Psgr	Per Psgr	Recovery	Service	Standards
170	Eastside Flyer	117	8	6.5	7.0	19.0	\$9.87	\$4.68	53%	X	
173	Square Flyer	22	2	1.6	1.6	15.3	\$11.35	\$4.86	57%	X	
171	Westside Flyer	84	6	4.5	4.9	19.1	\$10.00	\$4.98	50%	X	
177	Villages - Rancho CordoVan	141	58	5.8	7.1	20.5	\$10.39	\$6.08	41%	X	
172	Central Flyer	127	8	6.3	7.3	17.8	\$11.19	\$6.40	43%	X	
33	Dos Rios	210	60	7.5	11.5	34.8	\$7.61	\$6.53	14%		
176	Kavala - Rancho CordoVan	30	18	4.5	6.5	12.7	\$19.71	\$6.84	65%	X	
47	Phoenix Park	138	24	11.2	13.5	15.2	\$13.77	\$12.69	8%		X
178	Granite Shuttle	86	41	6.8	11.6	15.0	\$19.63	\$15.18	23%	X	X
95	Citrus Heights-Antelope Rd	82	23	7.7	10.8	11.4	\$21.39	\$20.31	5%		X
85	McClellan Shuttle	20	14	5.5	6.5	3.9	\$51.76	\$50.69	2%	X	X
TOTAL		1,057	262	68	88	15.6					




(Goal &lt; \$8.29)

Costing factors and average fare assumptions from FY 2016 operating budget  
 Routes 85, 95 170, 171, 172, 173, 176, 177, and 178 are operated according to service agreements  
 Contract revenue has been treated as fare revenue, reducing net cost and increasing fare box recovery  
 List excludes CityRide dial-a-ride service launched 10/29/12

Quarterly Ridership Report  
 Period Ending December 31, 2015

**Trend Analysis**
**Sep. 6 - Dec. 31**

## Average Daily Boardings

		Boardings Per Day				Vehicle Service Hours Per Day				Boardings / Serv Hour	
		FY 2016	FY 2015	Variance	%	FY 2016	FY 2015	Variance	%	FY 2016	FY 2015
BUS	 Mon-Fri	44,419	50,286	-5,867	-11.7%	1,329	1,316	13	1.0%	33.4	38.2
	Saturday	17,210	19,313	-2,103	-10.9%	575	577	-3	-0.5%	29.9	33.4
	Sun/Hol	9,330	11,124	-1,794	-16.1%	366	367	-1	-0.2%	25.5	30.3
	CBS (Mon-Fri)	1,057	1,131	-74	-6.5%	68	68	0	0.0%	15.6	16.7
RAIL	 Mon-Fri	46,363	45,878	485	1.1%	301	263	38	14.4%	154.2	174.5
	Saturday	17,801	18,897	-1,097	-5.8%	178	159	19	11.8%	100.2	118.9
	Sun/Hol	12,501	13,387	-886	-6.6%	155	138	16	11.8%	80.8	96.7
DAR	 ADA Paratransit	982	940	43	4.5%	653	645	8	1.2%	1.50	1.46
	CityRide	37	35	2	4.5%	14.8	14.4	0.4	2.8%	2.48	2.44
		Boardings Per Day				Revenue Hours Per Day				Boardings / Rev Hour	
		FY 2016	FY 2015	Variance	%	FY 2016	FY 2015	Variance	%	FY 2016	FY 2015
Blue Line	Mon-Fri	24,973	23,984	988	4.1%	152	117	35	30.0%	164.4	205.4
	Saturday	9,489	9,794	-305	-3.1%	93	75	19	24.8%	101.9	131.3
	Sun/Hol	6,604	6,679	-75	-1.1%	81	65	16	25.1%	81.8	103.5
Gold Line	Mon-Fri	20,990	21,509	-519	-2.4%	134	131	3	2.0%	156.7	163.9
	Saturday	8,312	9,104	-791	-8.7%	85	84	0	0.2%	98.3	108.0
	Sun/Hol	5,897	6,707	-811	-12.1%	74	74	0	0.2%	79.7	90.9
Green Line	Mon-Fri	400	385	15	4.0%	15	15	0	0.0%	27.0	26.0

Service Hours = Running time only (first to last time point)

Revenue Hours = Service Hours plus breaks (layover/recovery)

Deadhead Hours = Travel to/from garage and in between routes if not in service

Total Vehicle Hours = Revenue hours plus deadhead

Bus vehicle hours are stated in terms of service hours per day

Rail hours are stated in terms of revenue hours

Dial-a-Ride (DAR) service hours are time spent in service or available for service (excludes scheduled lunch breaks and other out-of-service time).

**Quarterly Ridership Report  
Period Ending December 31, 2015**
**Trend Analysis**
**Bus - Weekdays**

Q4 - Sep/Oct/Nov/Dec

Route	Name	Boardings Per Day				Vehicle Service Hours Per Day				Boardings/Serv Hr	
		FY 2016	FY 2015	Change	% Change	FY 2016	FY 2015	Change	% Change	FY 2016	FY 2015
1	Greenback	2,989	3,408	-419	-12.3%	66.6	66.6	0.0	0.0%	44.9	51.1
2	Riverside	463	495	-32	-6.4%	17.3	17.3	0.0	0.0%	26.8	28.6
3	Riverside Express	181	204	-23	-11.4%	5.1	5.1	0.0	0.0%	35.7	40.3
5	Meadowview-Valley Hi	231	319	-88	-27.6%	11.4	11.4	0.0	0.0%	20.3	28.0
6	Land Park	344	380	-37	-9.6%	17.6	17.6	0.0	0.0%	19.5	21.6
7	Pocket Express	137	142	-4	-3.0%	3.4	3.4	0.0	0.0%	40.4	41.7
11	Truxel Road	777	839	-62	-7.3%	24.3	24.3	0.0	0.0%	32.0	34.5
13	Northgate	419	469	-51	-10.8%	15.2	15.2	0.0	0.0%	27.5	30.8
15	Rio Linda Blvd-O Street	1,319	1,523	-204	-13.4%	39.4	37.7	1.7	4.6%	33.5	40.4
19	Rio Linda	873	972	-98	-10.1%	30.4	30.4	0.0	0.0%	28.8	32.0
21	Sunrise	1,375	1,567	-192	-12.3%	53.3	53.3	0.0	0.0%	25.8	29.4
22	Arden	335	364	-30	-8.1%	9.2	9.2	0.0	0.0%	36.3	39.5
23	El Camino	2,249	2,484	-235	-9.5%	64.8	64.8	0.0	0.0%	34.7	38.4
24	Madison-Greenback	180	183	-3	-1.6%	7.1	7.1	0.0	0.0%	25.2	25.6
25	Marconi	1,163	1,282	-119	-9.3%	38.8	36.3	2.5	6.9%	30.0	35.4
26	Fulton	1,325	1,547	-222	-14.3%	36.8	36.8	0.0	0.0%	36.0	42.0
28	Fair Oaks-Butterfield	408	295	113	38.4%	23.4	17.8	5.6	31.5%	17.5	16.6
29	Arden-California Avenue	103	113	-10	-9.2%	3.4	3.4	0.0	0.0%	30.2	33.3
30	J Street (DASH)	2,203	2,302	-99	-4.3%	53.7	53.7	0.0	0.0%	41.0	42.9
34	McKinley	258	290	-32	-11.1%	16.4	16.4	0.0	0.0%	15.8	17.8
38	P/Q Streets	512	538	-26	-4.8%	20.8	20.8	0.0	0.0%	24.6	25.8
51	Broadway-Stockton	4,408	4,850	-442	-9.1%	105.6	105.6	0.0	0.0%	41.7	45.9
54	Center Parkway	445	654	-209	-32.0%	18.5	18.4	0.1	0.3%	24.1	35.5
55	Scottsdale	920	1,025	-104	-10.2%	29.9	29.9	0.0	0.1%	30.8	34.3
56	Pocket-C.R.C.	1,505	2,161	-656	-30.3%	40.8	40.2	0.7	1.7%	36.9	53.8
61	Fruitridge	646	695	-49	-7.1%	22.8	21.3	1.5	6.9%	28.4	32.6
62	Freeport	1,364	1,473	-109	-7.4%	48.5	48.5	0.0	0.0%	28.1	30.4
65	Franklin South	320	446	-126	-28.3%	20.1	11.1	9.0	80.8%	15.9	40.2
67	Franklin	1,423	1,603	-179	-11.2%	51.6	51.6	0.0	0.0%	27.6	31.1
68	44th Street	1,436	1,568	-132	-8.4%	52.5	52.5	0.0	0.0%	27.3	29.9
72	Rosemont-Lincoln Village	1,153	1,278	-125	-9.8%	29.3	29.3	0.0	-0.1%	39.4	43.6
74	International	227	284	-57	-20.0%	10.7	10.7	0.0	0.0%	21.3	26.6
75	Mather Field	145	199	-54	-27.2%	4.4	4.4	0.0	0.0%	32.7	44.9
80	Watt-Elkhorn	1,118	1,250	-131	-10.5%	35.4	35.4	0.0	0.0%	31.6	35.4
81	Florin-65th Street	3,278	3,826	-548	-14.3%	74.9	80.3	-5.5	-6.8%	43.8	47.6
82	Howe-65th Street	2,235	2,367	-132	-5.6%	58.8	58.8	0.0	0.0%	38.0	40.2
84	Watt Avenue-North Highlands	956	1,136	-180	-15.8%	29.8	32.2	-2.5	-7.7%	32.1	35.3
86	San Juan-Silver Eagle	1,426	1,645	-219	-13.3%	41.3	41.4	0.0	-0.1%	34.5	39.8
87	Howe	1,339	1,593	-254	-15.9%	28.3	28.3	0.0	0.0%	47.3	56.2
88	West El Camino	979	1,167	-188	-16.1%	29.0	29.0	0.0	0.0%	33.8	40.2
93	Hillsdale	1,061	1,157	-96	-8.3%	31.8	31.8	-0.1	-0.2%	33.4	36.4
103	Auburn Blvd	93	102	-9	-9.2%	2.9	2.9	0.0	0.0%	31.7	34.9
109	Hazel Express	97	92	5	5.5%	3.7	3.7	0.0	0.0%	26.1	24.8
TOTAL		44,419	50,286	-5,867	-11.7%	1,328.7	1,315.8	12.9	1.0%	33.4	38.2



Quarterly Ridership Report  
Period Ending December 31, 2015

**Trend Analysis**
**Bus - Saturday**

Q4 - Sep/Oct/Nov/Dec

Route Name	Boardings Per Day				Vehicle Service Hours Per Day				Boardings/Serv Hr	
	FY 2016	FY 2015	Change	% Change	FY 2016	FY 2015	Change	% Change	FY 2016	FY 2015
1 Greenback	1,107	1,176	-69	-5.9%	33.4	33.5	-0.1	-0.4%	33.2	35.1
11 Truxel Road	347	386	-39	-10.1%	15.3	15.3	0.0	0.0%	22.7	25.2
15 Rio Linda Blvd-O Street	632	726	-94	-13.0%	18.0	19.0	-1.0	-5.3%	35.2	38.3
19 Rio Linda	355	412	-57	-13.8%	17.8	17.8	0.0	0.0%	20.0	23.2
21 Sunrise	677	749	-72	-9.6%	28.4	28.4	0.0	0.0%	23.9	26.4
23 El Camino	1,687	1,705	-18	-1.0%	54.1	54.2	-0.1	-0.3%	31.2	31.4
25 Marconi	528	571	-43	-7.5%	16.1	16.1	0.0	0.0%	32.8	35.4
26 Fulton	368	426	-58	-13.7%	10.9	10.9	0.0	0.0%	33.9	39.3
30 J Street (DASH)	606	674	-68	-10.1%	22.2	22.2	0.0	0.0%	27.4	30.4
38 P/Q Streets	201	221	-20	-8.9%	16.2	16.2	0.0	0.0%	12.5	13.7
51 Broadway-Stockton	2,026	2,152	-126	-5.9%	46.7	46.7	0.0	0.0%	43.4	46.1
54 Center Parkway	131	184	-53	-28.6%	8.4	8.4	0.0	0.0%	15.6	21.9
55 Scottsdale	297	349	-53	-15.1%	8.2	8.2	0.0	0.0%	36.4	42.9
56 Pocket-C.R.C.	737	1,100	-363	-33.0%	28.0	28.0	0.0	0.0%	26.3	39.3
62 Freeport	424	410	14	3.5%	23.2	23.2	0.0	0.0%	18.3	17.7
67 Franklin	758	814	-56	-6.9%	21.7	21.7	0.0	0.0%	34.9	37.5
68 44th Street	711	773	-62	-8.0%	22.1	22.1	0.0	0.0%	32.2	35.0
72 Rosemont-Lincoln Village	320	390	-70	-17.9%	10.7	10.7	0.0	0.0%	29.8	36.3
75 Mather Field	96	137	-40	-29.6%	3.5	3.5	0.0	0.0%	27.7	39.3
80 Watt-Elkhorn	797	869	-73	-8.4%	30.0	30.0	0.0	0.0%	26.6	29.0
81 Florin-65th Street	1,562	1,772	-210	-11.9%	46.0	46.0	0.0	0.0%	34.0	38.5
82 Howe-65th Street	621	700	-79	-11.3%	24.3	24.3	0.0	0.0%	25.6	28.8
84 Watt Avenue-North Highlands	470	513	-43	-8.3%	19.5	21.0	-1.5	-7.1%	24.1	24.4
86 San Juan-Silver Eagle	513	620	-107	-17.2%	16.8	16.8	0.0	0.0%	30.5	36.9
87 Howe	466	580	-114	-19.6%	12.3	12.3	0.0	0.0%	37.8	47.1
88 West El Camino	368	449	-81	-18.1%	9.5	9.5	0.0	0.0%	38.6	47.1
93 Hillsdale	405	454	-49	-10.7%	11.9	11.9	0.0	0.0%	34.2	38.3
<b>TOTAL</b>	<b>17,210</b>	<b>19,313</b>	<b>-2,103</b>	<b>-10.9%</b>	<b>574.7</b>	<b>577.5</b>	<b>-2.8</b>	<b>-0.5%</b>	<b>29.9</b>	<b>33.4</b>

**Quarterly Ridership Report  
Period Ending December 31, 2015**
**Trend Analysis**
**Bus - Sun/Hol**

Q4 - Sep/Oct/Nov/Dec

Route	Name	Boardings Per Day				Vehicle Service Hours Per Day				Boardings/Serv Hr	
		FY 2016	FY 2015	Change	% Change	FY 2016	FY 2015	Change	% Change	FY 2016	FY 2015
1	Greenback	695	796	-102	-12.8%	30.6	30.6	0.0	0.0%	22.7	26.0
15	Rio Linda Blvd-O Street	424	513	-89	-17.3%	17.0	17.7	-0.8	-4.2%	25.0	29.0
19	Rio Linda	271	325	-54	-16.6%	17.8	17.8	0.0	0.0%	15.2	18.3
21	Sunrise	413	471	-58	-12.3%	21.7	21.7	0.0	0.0%	19.0	21.7
23	El Camino	914	1,032	-118	-11.4%	26.0	26.0	0.0	0.0%	35.1	39.6
26	Fulton	225	277	-52	-18.7%	9.3	9.3	0.0	0.0%	24.1	29.6
30	J Street (DASH)	299	328	-29	-8.8%	11.8	11.8	0.0	0.0%	25.3	27.8
38	P/Q Streets	157	174	-17	-9.7%	12.3	12.3	0.0	0.0%	12.8	14.1
51	Broadway-Stockton	1,195	1,385	-190	-13.7%	34.3	34.3	0.0	0.0%	34.8	40.4
55	Scottsdale	164	201	-36	-18.2%	6.9	6.9	0.0	0.0%	23.8	29.1
56	Pocket-C.R.C.	373	635	-261	-41.2%	13.7	13.7	0.0	0.0%	27.2	46.2
67	Franklin	494	580	-86	-14.8%	21.7	21.7	0.0	0.0%	22.7	26.7
68	44th Street	539	607	-68	-11.2%	22.1	22.1	0.0	0.0%	24.4	27.5
72	Rosemont-Lincoln Village	196	243	-47	-19.3%	10.3	10.3	0.0	0.0%	19.1	23.6
75	Mather Field	66	96	-30	-31.0%	3.5	3.5	0.0	0.0%	19.0	27.5
80	Watt-Elkhorn	566	657	-91	-13.9%	20.9	20.9	0.0	0.0%	27.1	31.5
81	Florin-65th Street	753	880	-127	-14.4%	22.2	22.2	0.0	0.0%	33.9	39.6
82	Howe-65th Street	478	561	-83	-14.8%	21.4	21.4	0.0	0.0%	22.3	26.2
86	San Juan-Silver Eagle	319	387	-68	-17.6%	12.6	12.6	0.0	0.0%	25.3	30.7
87	Howe	257	335	-78	-23.3%	8.9	8.9	0.0	0.0%	28.8	37.5
88	West El Camino	256	338	-82	-24.3%	9.5	9.5	0.0	0.0%	26.8	35.4
93	Hillsdale	276	304	-28	-9.2%	11.9	11.9	0.0	0.0%	23.3	25.7
TOTAL		9,330	11,124	-1,794	-16.1%	366.4	367.1	-0.8	-0.2%	25.5	30.3

**Trend Analysis**
**CBS - Weekdays**

Q4 - Sep/Oct/Nov/Dec

Route	Name	Boardings Per Day				Vehicle Service Hours Per Day				Boardings/Serv Hr	
		FY 2016	FY 2015	Change	% Change	FY 2016	FY 2015	Change	% Change	FY 2016	FY 2015
33	Dos Rios	210	203	7	3.5%	7.5	7.5	0.0	0.0%	27.9	26.9
47	Phoenix Park	138	155	-17	-11.0%	11.2	11.2	0.0	0.0%	12.3	13.8
85	McClellan Shuttle	20	23	-3	-14.4%	5.5	5.5	0.0	0.2%	3.6	4.2
95	Citrus Heights-Antelope Rd	82	92	-10	-11.1%	7.7	7.7	0.0	0.0%	10.7	12.0
170	Eastside Flyer	117	118	-1	-0.8%	6.5	6.5	0.0	0.0%	18.1	18.2
171	Westside Flyer	84	88	-4	-4.6%	4.5	4.5	0.0	0.0%	18.9	19.8
172	Central Flyer	127	122	5	3.7%	6.3	6.3	0.0	0.0%	20.1	19.3
173	Square Flyer	22	23	-1	-3.2%	1.6	1.6	0.0	0.0%	13.8	14.2
176	Cordovan - Anatolia	30	46	-16	-34.8%	4.5	4.5	0.0	0.0%	6.7	10.2
177	Rancho Cordovan	141	170	-29	-17.1%	5.8	5.8	0.0	0.0%	24.3	29.3
178	Granite Shuttle	86	90	-4	-4.4%	6.8	6.8	0.0	0.0%	12.6	13.2
TOTAL		1,057	1,131	-74	-6.5%	67.9	67.9	0.0	0.0%	15.6	16.7

Quarterly Ridership Report  
 Period Ending December 31, 2015

**Average Daily Ridership by Time Period**

FY15 - 9/6/15 - 12/31/15



BLUE LINE - TOTAL	AM Peak (6:00 - 9:00a)		Midday (9:01a - 3:29p)		PM Peak (3:30 - 6:00p)		Other Weekday (<6:00a or >6:00p)		Total Weekday	
	On	Off	On	Off	On	Off	On	Off	On	Off
WATT / I-80	417	417	657	761	291	345	409	315	1,774	1,838
WATT I-80 WEST	86	0	13	37	5	95	11	4	116	136
ROSEVILLE RD	399	17	61	253	37	381	28	36	524	686
MARCONI / ARCADE	313	98	404	379	163	295	125	154	1,005	926
SWANSTON	119	34	94	145	44	156	51	81	307	414
ROYAL OAKS	152	89	223	260	143	157	119	124	637	631
ARDEN / DEL PASO	278	185	529	557	260	367	221	259	1,287	1,368
GLOBE AVENUE	76	32	100	142	65	85	42	60	283	318
ALKALI FLAT / LA VALENT	174	228	568	488	177	177	132	207	1,051	1,099
12TH & I STREETS	58	321	235	176	293	86	57	60	643	642
CATHEDRAL SQUARE	95	334	343	335	334	103	128	73	900	845
7TH / 9TH & K	264	236	645	471	350	189	244	130	1,503	1,025
7TH / 8TH & CAPITOL	124	386	361	298	371	131	101	99	958	914
8TH & O STREETS	68	382	258	140	412	55	54	56	792	632
ARCHIVES PLAZA	49	254	192	138	345	49	35	39	621	480
13TH STREET	95	106	283	311	130	126	98	64	606	607
16TH STREET	308	585	849	1,035	659	409	383	319	2,197	2,347
BROADWAY	226	212	426	421	280	205	229	209	1,161	1,047
4TH/WAYNE HULTGREN	92	294	329	165	186	120	57	59	664	639
CITY COLLEGE	144	536	834	836	425	220	325	82	1,728	1,674
FRUITRIDGE	139	77	278	224	108	182	103	118	628	602
47TH AVE	204	30	218	297	114	288	116	159	653	774
FLORIN	303	188	582	619	298	407	228	294	1,411	1,507
MEADOWVIEW	503	108	486	465	201	573	205	322	1,394	1,467
FRANKLIN	302	22	146	195	47	265	52	111	547	593
CENTER PKWY	108	59	131	107	68	114	45	82	352	362
CRC	313	184	485	474	185	410	187	273	1,169	1,341
	5,409	5,411	9,727	9,727	5,990	5,990	3,786	3,788	24,912	24,916

**Average Daily Ridership by Time Period**

FY15 - 9/6/15 - 12/31/15



GOLD LINE - TOTAL	AM Peak (6:00 - 9:00a)		Midday (9:01a - 3:29p)		PM Peak (3:30 - 6:00p)		Other Weekday (<6:00a or >6:00p)		Total Weekday	
	On	Off	On	Off	On	Off	On	Off	On	Off
SAC VALLEY	95	69	124	152	112	64	60	58	391	342
7TH & I	36	3	126	7	133	0	32	1	326	11
8TH & H	8	220	14	115	14	39	1	44	37	418
7TH & K	106	5	262	9	184	14	142	5	693	33
8TH & K	10	139	14	361	1	173	8	115	32	787
7TH / 8TH & CAPITOL	45	337	199	195	207	88	34	85	486	705
8TH & O STREETS	88	356	262	165	359	63	44	61	753	644
ARCHIVES PLAZA	48	319	251	172	294	37	29	37	622	564
13TH STREET	92	111	191	230	251	98	105	52	740	492
16TH STREET	511	541	882	959	472	435	345	334	2,210	2,269
23RD STREET	184	120	174	194	116	184	64	115	538	613
29TH STREET	346	428	801	765	330	288	164	133	1,641	1,613
39TH STREET	53	52	133	157	83	84	27	45	296	338
48TH STREET	53	62	79	110	62	62	40	28	234	262
59TH STREET	72	74	109	63	37	86	36	45	254	268
65TH STREET	410	569	748	763	353	379	279	221	1,790	1,931
POWER INN ROAD	118	121	260	214	137	160	67	92	581	587
COLLEGE GREENS	164	158	401	361	167	174	135	101	867	794
WATT / MANLOVE	392	126	428	430	208	455	156	191	1,184	1,201
STARFIRE	133	20	145	141	43	138	50	96	371	395
TIBER	104	62	160	132	77	130	62	83	403	408
BUTTERFIELD	167	216	269	189	180	123	64	138	680	667
MATHER FIELD / MILLS	523	221	719	653	320	511	266	322	1,827	1,707
ZINFANDEL	205	219	347	543	274	248	258	163	1,084	1,173
CORDOVA TOWN CTR	167	101	260	245	144	173	91	94	662	613
SUNRISE	331	130	199	203	158	274	133	118	820	725
HAZEL	62	66	54	83	58	68	16	2	189	219
IRON POINT	234	114	170	228	105	168	74	26	583	536
GLENN	166	74	76	50	40	113	64	16	346	253
HIST FOLSOM	198	86	102	172	78	167	46	72	424	497
	5,120	5,120	8,059	8,059	4,995	4,995	2,893	2,893	21,066	21,066



Quarterly Ridership Report  
 Period Ending December 31, 2015

**Average Daily Ridership by Time Period**

FY15 - 9/6/15 - 12/31/15



GREEN LINE - TOTAL	AM Peak (6:00 - 9:00a)		Midday (9:01a - 3:29p)		PM Peak (3:30 - 6:00p)		Other Weekday (<6:00a or >6:00p)		Total Weekday	
	On	Off	On	Off	On	Off	On	Off	On	Off
RICHARDS BLVD	39	20	70	58	28	33	11	18	148	129
7TH & I	4	8	11	15	7	9	1	1	23	34
7TH & K	2	14	9	24	3	7	2	4	16	49
7TH / 8TH & CAPITOL	5	4	20	6	6	3	4	1	35	14
8TH & O STREETS	7	4	10	8	3	5	1	2	21	18
ARCHIVES PLAZA	2	6	13	12	6	4	2	1	24	22
13TH STREET	7	20	27	52	9	17	5	11	49	101
8TH & K	9	3	26	9	16	2	9	1	60	15
8TH & H	7	5	8	10	6	3	4	1	25	18
	82	83	194	194	83	83	40	40	400	400