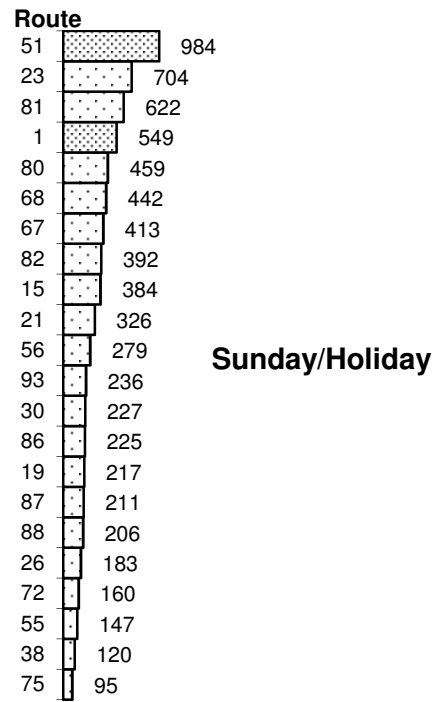
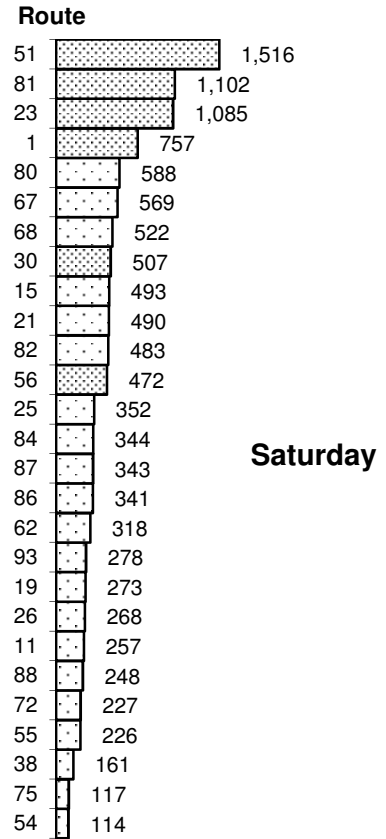
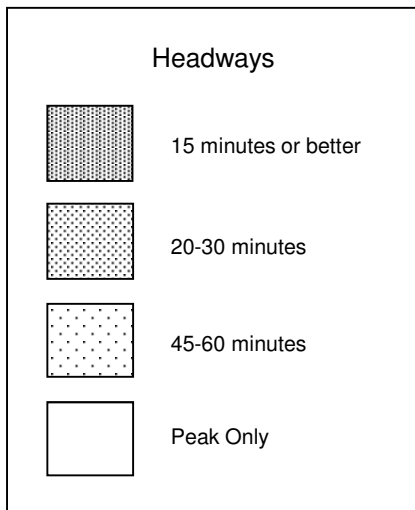
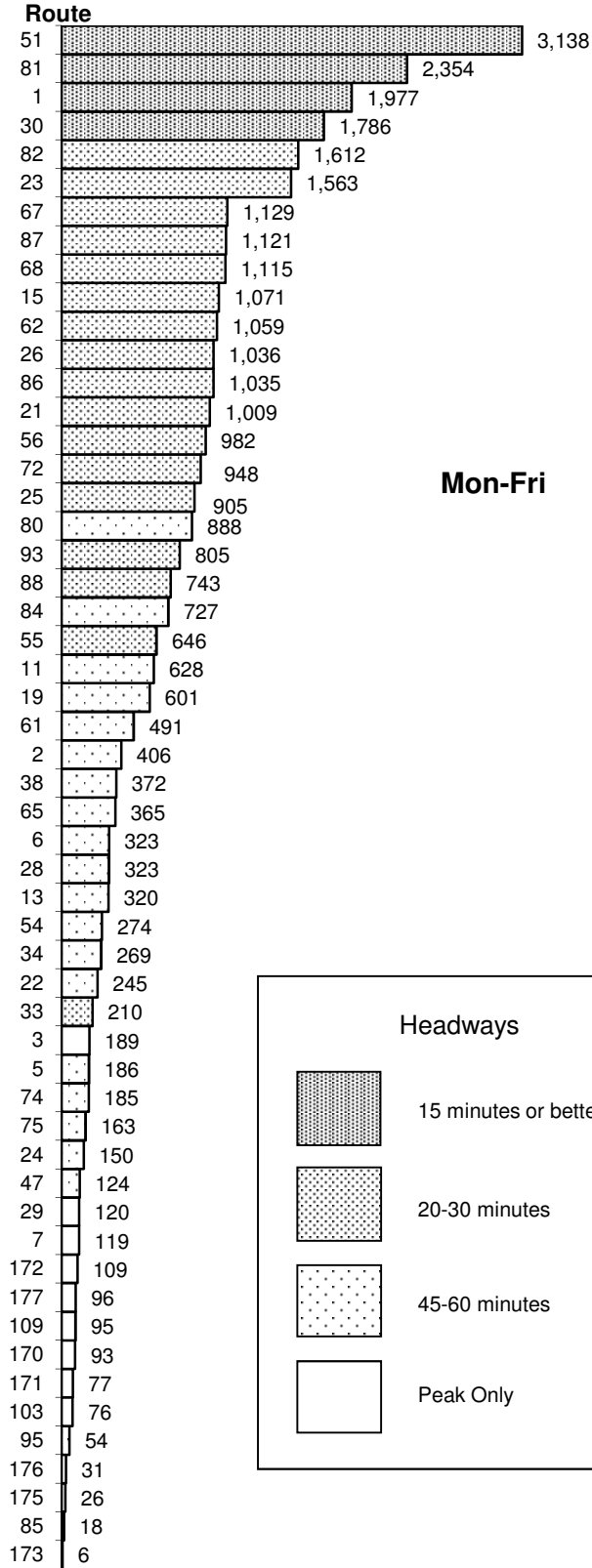
 **Regional Transit**
Quarterly Ridership Report
Period Ending March 31, 2018

Average Daily Boardings

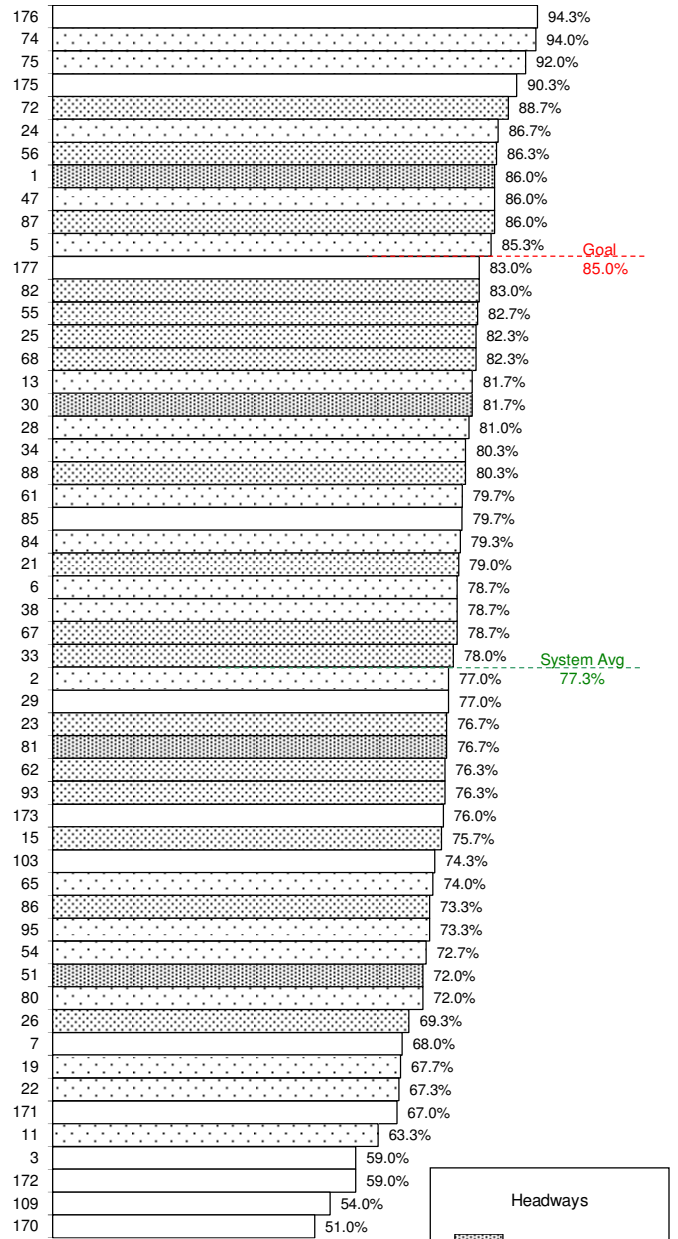


Weekday Bus and CBS Routes

On-time performance is measured at time points, which are major stops shown on the public schedule (usually 4-6 per route).

A bus is considered on-time if it leaves its time point within 0 to 4:59 minutes of its scheduled time. On-time performance indicates the percent of time points where the bus was on-time according to this definition.

SacRT's on-time performance goal for fixed-route buses is 85 percent, or better. The first quarter average for weekday on-time performance is 77.3 percent, an improvement from the fourth quarter results, which was 76.4 percent.

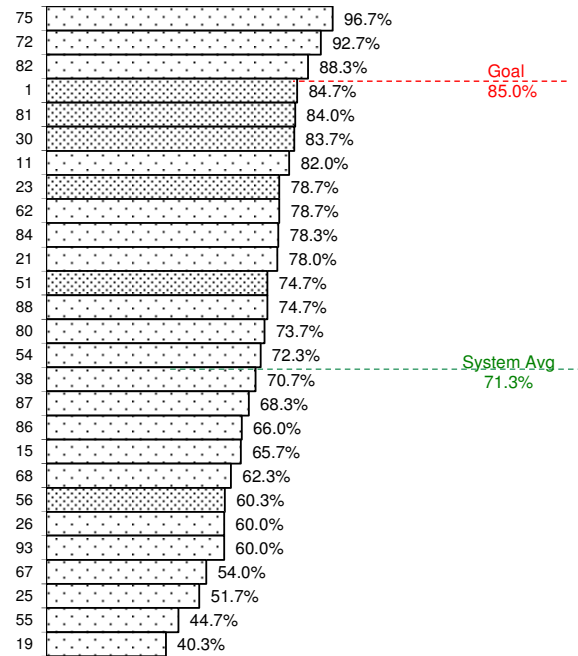
On-Time Performance


Saturday Bus Routes

On-time performance is measured at time points, which are major stops shown on the public schedule (usually 4-6 per route).

A bus is considered on-time if it leaves its time point within 0 to 4:59 minutes of its scheduled time. On-time performance indicates the percent of time points where the bus was on-time according to this definition.

SacRT's on-time performance goal for fixed-route buses is 85 percent, or better. The first quarter average for Saturday on-time performance is 71.3 percent, which is a slight decrease from the fourth quarter average of 72 percent.

On-Time Performance


1/1/18 – 3/31/18

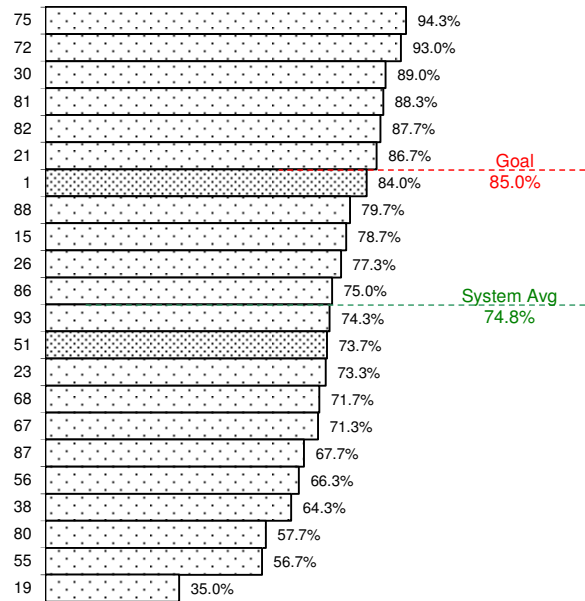
Sunday/Holiday Bus Routes

On-time performance is measured at time points, which are major stops along the route and shown on the public schedule (usually 4-6 per route).

A bus is considered on-time if it leaves its time point within 0 to 4:59 minutes of its scheduled time. On-time performance indicates the percent of time points where the bus was on-time according to this definition.

SacRT's on-time performance goal for fixed-route buses is 85 percent, or better. The first quarter average for Sunday on-time performance is 74.8 percent, which is a decrease from the fourth quarter average of 76 percent.

On-Time Performance



1/1/18 – 3/31/18

Light Rail On-Time Departures

Light rail on-time performance is measured at the starting point of a trip. A one-way trip is considered on-time if it departs within 0 to 4:59 minutes of its scheduled starting time.

SacRT's on-time performance goal for light rail trains is 97 percent on-time departures. The first quarter average for the Blue line was consistent with the previous quarter, and the Gold and Green line averages improved.

Calendar Year/Qtr	Blue	Gold	Green
2016-Q2	97.3%	98.4%	96.2%
2016-Q3	97.5%	97.7%	96.7%
2016-Q4	96.1%	97.2%	93.6%
2017-Q1	96.8%	97.8%	90.7%
2017-Q2	98.0%	98.4%	93.5%
2017-Q3	97.9%	98.3%	94.4%
2017-Q4	98.3%	97.9%	90.9%
2018-Q1	98.3%	98.7%	92.5%


Average Daily Ridership by Time Period

1/1/18 - 3/31/18



BLUE LINE - TOTAL	AM Peak (6:00 - 9:00a)		Midday (9:01a - 3:29p)		PM Peak (3:30 - 6:00p)		Other Weekday (<6:00a or >6:00p)		Total Weekday	
	On	Off	On	Off	On	Off	On	Off	On	Off
WATT / I-80	307	229	438	475	167	244	231	274	1,143	1,223
WATT I-80 WEST	97	2	15	16	2	55	17	2	132	75
ROSEVILLE RD	278	19	72	133	38	339	56	33	444	525
MARCONI / ARCADE	229	73	261	310	76	184	109	121	674	689
SWANSTON	80	32	72	85	41	87	30	44	223	249
ROYAL OAKS	75	68	174	124	84	96	107	75	440	362
ARDEN / DEL PASO	162	103	338	340	155	147	173	156	828	746
GLOBE AVENUE	95	28	66	94	47	100	42	68	250	290
ALKALI FLAT / LA VALENT	83	92	333	304	59	82	92	161	567	640
12TH & I STREETS	42	241	148	131	225	20	59	44	474	436
CATHEDRAL SQUARE	45	354	204	270	316	89	124	57	690	770
7TH / 9TH & K	57	169	261	176	128	67	82	48	528	461
7TH / 8TH & CAPITOL	113	435	355	266	426	126	138	125	1,032	953
8TH & O STREETS	32	455	203	131	415	27	47	47	698	660
ARCHIVES PLAZA	30	247	153	94	361	22	36	37	580	400
13TH STREET	34	96	194	255	105	78	121	33	454	463
16TH STREET	205	507	557	601	490	158	395	216	1,647	1,481
BROADWAY	114	165	305	268	137	134	113	112	670	679
4TH/WAYNE HULTGREN	77	137	198	81	69	98	60	60	405	376
CITY COLLEGE	115	227	411	462	104	137	176	47	805	873
FRUITRIDGE	105	55	123	173	41	100	52	85	322	414
47TH AVE	285	44	159	165	54	247	66	123	564	578
FLORIN	208	128	387	369	101	235	129	171	826	902
MEADOWVIEW	350	79	306	349	85	303	79	225	819	956
FRANKLIN	366	21	108	169	42	319	43	107	559	616
CENTER PKWY	74	38	101	59	8	31	37	60	220	188
CRC	565	180	367	408	126	378	186	269	1,245	1,234
	4,224	4,224	6,308	6,308	3,904	3,904	2,802	2,802	17,238	17,238

Average Daily Ridership by Time Period

1/1/18 - 3/31/18



GOLD LINE - TOTAL	AM Peak (6:00 - 9:00a)		Midday (9:01a - 3:29p)		PM Peak (3:30 - 6:00p)		Other Weekday (<6:00a or >6:00p)		Total Weekday	
	On	Off	On	Off	On	Off	On	Off	On	Off
SAC VALLEY	80	54	109	131	161	128	90	44	440	358
7TH & I	44	5	87	1	212	4	58	4	400	13
8TH & H	1	146	10	98	10	28	0	26	22	298
7TH & K	0	0	0	0	23	0	0	0	23	0
8TH & K	1	181	12	260	21	140	2	91	37	672
7TH / 8TH & CAPITOL	83	309	295	215	429	102	150	61	957	688
8TH & O STREETS	61	431	191	133	448	49	49	58	749	672
ARCHIVES PLAZA	63	409	172	107	404	35	38	39	678	589
13TH STREET	103	105	301	211	133	104	92	48	630	468
16TH STREET	362	512	657	673	418	403	299	256	1,736	1,845
23RD STREET	145	93	192	141	132	123	55	69	524	425
29TH STREET	245	335	681	668	311	200	162	156	1,400	1,359
39TH STREET	43	56	103	68	65	60	24	41	235	225
48TH STREET	33	44	63	66	57	49	21	37	174	197
59TH STREET	116	55	95	78	49	85	21	20	281	239
65TH STREET	256	280	631	640	262	335	253	164	1,402	1,418
POWER INN ROAD	120	67	192	169	104	115	59	74	475	424
COLLEGE GREENS	124	86	303	266	127	121	98	105	653	578
WATT / MANLOVE	397	128	294	433	141	423	108	163	940	1,146
STARFIRE	98	26	88	82	50	85	54	64	289	258
TIBER	98	52	96	105	43	90	47	48	283	295
BUTTERFIELD	131	196	190	115	142	130	66	105	528	545
MATHER FIELD / MILLS	387	147	579	521	185	381	136	249	1,287	1,298
ZINFANDEL	152	93	290	319	160	200	146	113	748	725
CORDOVA TOWN CTR	133	59	192	201	80	176	59	70	464	506
SUNRISE	248	85	155	185	167	327	106	105	676	703
HAZEL	41	37	37	31	37	65	9	35	123	168
IRON POINT	195	31	90	127	60	244	54	37	399	439
GLENN	112	22	55	61	39	117	57	27	263	228
HIST FOLSOM	215	43	83	137	59	209	28	33	384	420
	4,087	4,087	6,243	6,243	4,530	4,528	2,341	2,341	17,201	17,199


Average Daily Ridership by Time Period

1/1/18 - 3/31/18

GREEN LINE - TOTAL	AM Peak (6:00 - 9:00a)		Midday (9:01a - 3:29p)		PM Peak (3:30 - 6:00p)		Other Weekday (<6:00a or >6:00p)		Total Weekday	
	On	Off	On	Off	On	Off	On	Off	On	Off
RICHARDS BLVD	46	21	82	56	24	39	7	11	158	127
7TH & I	2	14	8	30	10	7	2	3	21	55
7TH & K	0	0	0	1	0	0	0	0	0	1
7TH / 8TH & CAPITOL	10	9	17	24	8	12	8	2	42	47
8TH & O STREETS	7	6	9	6	5	3	3	1	24	16
ARCHIVES PLAZA	2	13	16	5	10	4	0	1	27	23
13TH STREET	14	18	18	50	10	16	4	13	45	97
8TH & K	8	0	24	4	11	3	6	0	49	8
8TH & H	6	13	10	5	10	2	2	1	27	21
	94	94	181	181	87	87	32	32	395	395


Average Weekday Ridership

Historical Trends by Station

GREEN LINE - TOTAL	Year Ended 6/30/13		Year Ended 6/30/14		Year Ended 6/30/2015		Year Ended 6/30/2016		Year Ended 6/30/2017		Q1 (1/1/18-3/31/18)		Percent Change FY17 to Q1	
	On	Off	On	Off	On	Off	On	Off	On	Off	On	Off	On	Off
RICHARDS BLVD	79	82	103	105	150	143	158	150	139	126	158	127	14%	1%
7TH & I	13	16	13	25	24	38	20	40	15	51	21	55	37%	9%
7TH & K	25	34	26	41	22	48	21	51	-	-	0	1	-	-
7TH / 8TH & CAPITOL	16	13	22	14	35	25	34	18	41	44	42	47	4%	8%
8TH & O STREETS	21	17	28	23	28	27	29	25	23	18	24	16	4%	-11%
ARCHIVES PLAZA	33	17	32	21	37	28	30	27	27	19	27	23	2%	20%
13TH STREET	51	68	58	74	76	104	59	96	44	82	45	97	4%	19%
8TH & K	38	35	48	38	55	36	61	20	45	14	49	8	8%	-44%
8TH & H	19	15	22	12	38	16	33	18	39	20	27	21	-29%	1%
	297	297	352	352	464	464	444	444	373	373	404	403	8%	8%