
 **Regional Transit**
Quarterly Ridership Report
Period Ending June 30, 2017

Weekday Bus and CBS Routes

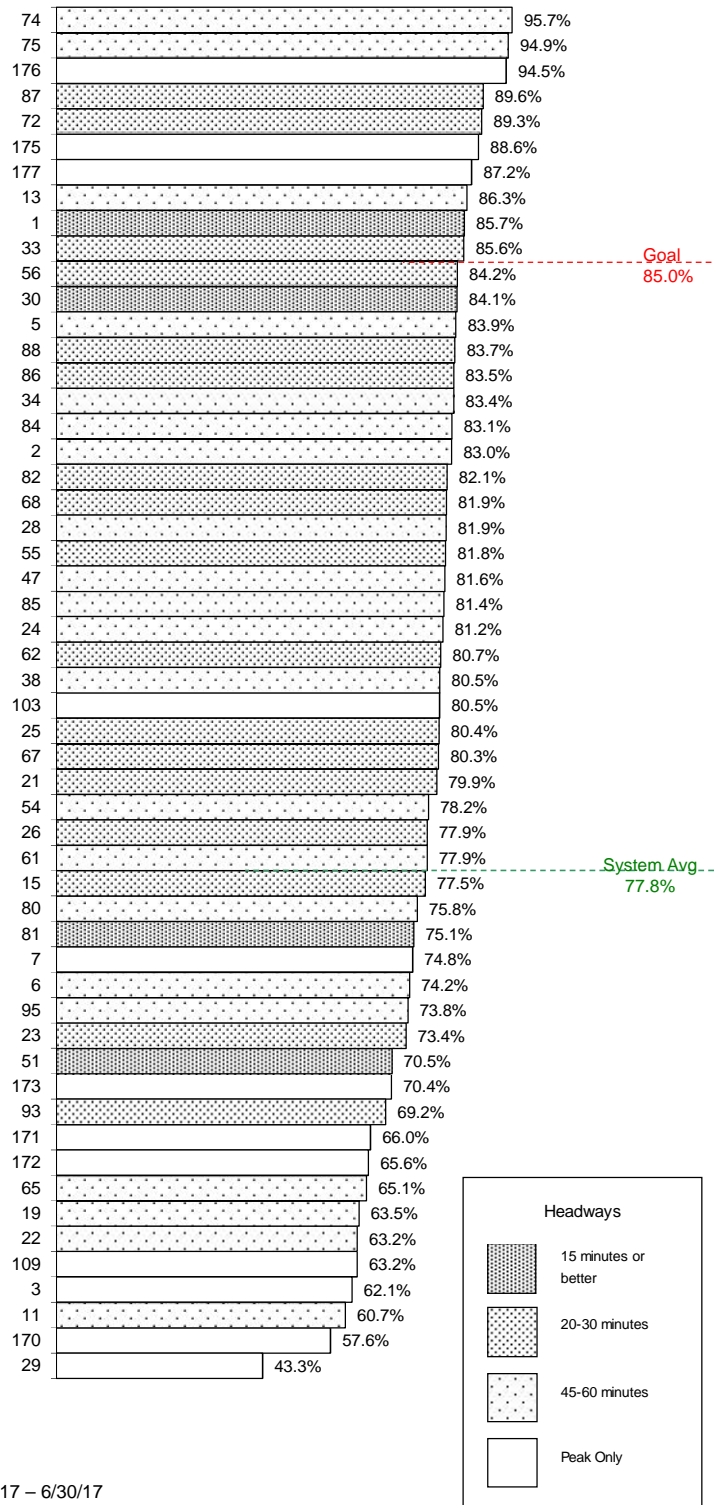
On-time performance is measured at time points, which are major stops shown on the public schedule (usually 4-6 per route).

A bus is considered on-time if it leaves its time point within 0 to 4:59 minutes of its scheduled time. On-time performance indicates the percent of time points where the bus was on-time according to this definition.

SacRT's on-time performance goal for fixed-route buses is 85 percent, or better. The second quarter average for weekday on-time performance is 77.8 percent; an improvement from the first quarter results, which was 73.5 percent.

Notes:

- Route 54 improved from 55.7 percent on-time in Q1, to 78.2 percent on-time in Q2.

On-Time Performance


4/1/17 – 6/30/17

Saturday Bus Routes

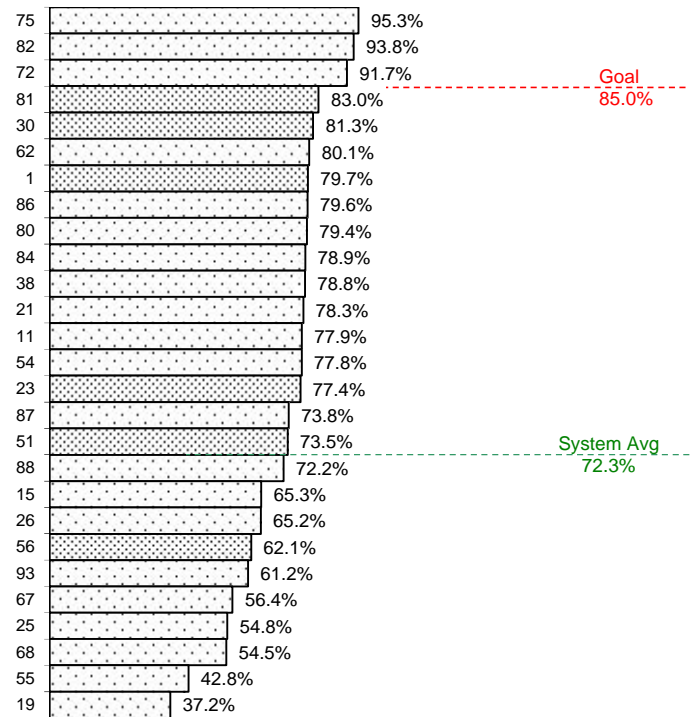
On-time performance is measured at time points, which are major stops shown on the public schedule (usually 4-6 per route).

A bus is considered on-time if it leaves its time point within 0 to 4:59 minutes of its scheduled time. On-time performance indicates the percent of time points where the bus was on-time according to this definition.

SacRT's on-time performance goal for fixed-route buses is 85 percent, or better. The second quarter average for Saturday on-time performance is 72.3 percent, which is a decrease from the first quarter average of 74.9 percent.

Notes:

- On-time performance on Route 93 declined from 77.4 percent in Q1, to 61.2 percent in Q2.

On-Time Performance


4/1/17 – 6/30/17

Sunday/Holiday Bus Routes

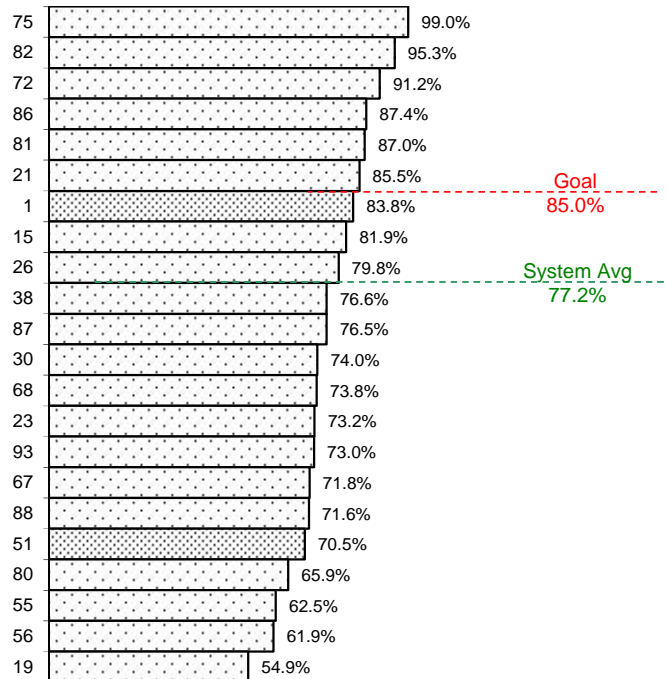
On-time performance is measured at time points, which are major stops along the route and shown on the public schedule (usually 4-6 per route).

A bus is considered on-time if it leaves its time point within 0 to 4:59 minutes of its scheduled time. On-time performance indicates the percent of time points where the bus was on-time according to this definition.

SacRT's on-time performance goal for fixed-route buses is 85 percent, or better. The second quarter average for Sunday on-time performance is 77.2 percent, which is slightly better than the first quarter average of 76.4 percent.

Notes:

- Route 88 improved from 54.1 percent on-time in Q1, to 71.6 percent on-time in Q2.

On-Time Performance


4/1/17 – 6/30/17

Light Rail On-Time Departures

Light rail on-time performance is measured at the starting point of a trip. A one-way trip is considered on-time if it departs within 0 to 4:59 minutes of its scheduled starting time.

SacRT's on-time performance goal for light rail trains is 97 percent on-time departures. Second quarter averages for all three light rail lines improved from first quarter results; however, the Green line is still below goal.

Calendar Year/Qtr	Blue	Gold	Green
2016-Q2	97.3%	98.4%	96.2%
2016-Q3	97.5%	97.7%	96.7%
2016-Q4	96.1%	97.2%	93.6%
2017-Q1	96.8%	97.8%	90.7%
2017-Q2	98.0%	98.4%	93.5%


Average Daily Ridership by Time Period

FY17 - 4/1/17 - 6/30/17



BLUE LINE - TOTAL	AM Peak (6:00 - 9:00a)		Midday (9:01a - 3:29p)		PM Peak (3:30 - 6:00p)		Other Weekday (<6:00a or >6:00p)		Total Weekday	
	On	Off	On	Off	On	Off	On	Off	On	Off
WATT / I-80	485	198	599	538	214	302	385	285	1,682	1,324
WATT I-80 WEST	146	0	17	39	2	52	20	9	184	100
ROSEVILLE RD	439	17	70	238	31	390	88	54	629	699
MARCONI / ARCADE	318	60	243	294	130	207	144	128	835	690
SWANSTON	86	20	56	127	18	123	50	48	210	317
ROYAL OAKS	127	54	201	190	88	96	148	108	563	449
ARDEN / DEL PASO	163	129	366	392	127	222	264	241	919	985
GLOBE AVENUE	93	38	104	113	53	57	80	74	330	282
ALKALI FLAT / LA VALENT	187	162	458	415	99	118	125	165	869	860
12TH & I STREETS	36	349	176	150	260	42	81	54	553	594
CATHEDRAL SQUARE	84	477	317	292	268	94	150	106	820	969
7TH / 9TH & K	47	209	319	201	186	60	164	88	716	558
7TH / 8TH & CAPITOL	108	600	525	365	435	137	225	254	1,292	1,356
8TH & O STREETS	42	510	225	111	446	76	61	40	774	737
ARCHIVES PLAZA	32	448	158	112	368	17	47	30	604	606
13TH STREET	64	197	222	286	131	81	140	76	558	641
16TH STREET	255	553	719	735	460	231	431	316	1,865	1,835
BROADWAY	164	207	320	358	157	120	170	208	810	894
4TH/WAYNE HULTGREN	86	274	269	94	85	72	93	74	534	514
CITY COLLEGE	137	361	496	553	198	100	153	104	984	1,118
FRUITRIDGE	225	89	180	227	56	152	108	105	569	574
47TH AVE	403	71	161	227	43	260	47	151	655	709
FLORIN	299	221	432	470	143	249	238	323	1,112	1,263
MEADOWVIEW	463	78	373	449	111	319	166	303	1,113	1,149
FRANKLIN	444	12	104	199	44	290	49	112	642	612
CENTER PKWY	98	106	145	59	57	87	46	57	346	308
CRC	589	178	474	495	158	414	144	302	1,365	1,389
	5,618	5,618	7,730	7,730	4,368	4,368	3,817	3,817	21,533	21,533

Average Daily Ridership by Time Period

FY17 - 4/1/17 - 6/30/17



GOLD LINE - TOTAL	AM Peak (6:00 - 9:00a)		Midday (9:01a - 3:29p)		PM Peak (3:30 - 6:00p)		Other Weekday (<6:00a or >6:00p)		Total Weekday	
	On	Off	On	Off	On	Off	On	Off	On	Off
SAC VALLEY	88	77	149	173	80	93	61	64	378	407
7TH & I	30	2	112	6	235	0	23	0	400	8
8TH & H	6	180	22	98	21	29	1	34	50	341
7TH & K	0	0	0	0	0	0	0	0	0	0
8TH & K	3	210	25	353	9	151	5	118	43	832
7TH / 8TH & CAPITOL	101	262	320	190	390	80	135	102	946	634
8TH & O STREETS	91	363	222	102	384	50	38	78	735	593
ARCHIVES PLAZA	34	394	268	134	355	39	25	42	682	609
13TH STREET	112	93	228	218	164	88	95	46	599	446
16TH STREET	338	394	719	772	380	398	283	305	1,720	1,869
23RD STREET	136	94	146	171	98	104	87	63	468	432
29TH STREET	254	361	796	725	302	166	176	103	1,528	1,356
39TH STREET	72	50	87	97	56	60	40	27	255	233
48TH STREET	33	48	64	95	40	50	42	42	179	235
59TH STREET	59	63	93	131	45	73	32	41	229	308
65TH STREET	365	249	531	583	223	338	246	162	1,365	1,332
POWER INN ROAD	107	74	253	172	80	157	66	79	507	482
COLLEGE GREENS	110	134	314	299	116	112	89	106	628	652
WATT / MANLOVE	386	122	339	319	132	345	161	130	1,018	917
STARFIRE	79	24	87	103	43	98	59	83	267	308
TIBER	99	32	112	74	30	90	47	52	288	248
BUTTERFIELD	106	179	251	113	155	118	64	122	576	532
MATHER FIELD / MILLS	385	220	538	517	183	441	227	270	1,334	1,448
ZINFANDEL	144	128	314	357	154	146	156	134	767	765
CORDOVA TOWN CTR	157	68	184	175	109	173	96	51	545	466
SUNRISE	213	83	185	194	159	260	102	110	660	647
HAZEL	51	27	43	49	41	61	23	40	158	177
IRON POINT	191	49	114	188	55	172	62	30	422	439
GLENN	88	49	35	37	52	103	30	33	204	223
HIST FOLSOM	221	33	76	178	65	162	48	50	410	423
	4,061	4,061	6,623	6,623	4,158	4,158	2,518	2,518	17,360	17,360


Average Daily Ridership by Time Period

FY17 - 4/1/17 - 6/30/17

GREEN LINE - TOTAL	AM Peak (6:00 - 9:00a)		Midday (9:01a - 3:29p)		PM Peak (3:30 - 6:00p)		Other Weekday (<6:00a or >6:00p)		Total Weekday	
	On	Off	On	Off	On	Off	On	Off	On	Off
RICHARDS BLVD	34	18	74	55	26	43	6	11	139	126
7TH & I	4	13	7	25	3	13	2	1	15	51
7TH & K	0	0	0	0	0	0	0	0	0	0
7TH / 8TH & CAPITOL	9	10	15	21	6	9	11	4	41	44
8TH & O STREETS	5	6	10	7	5	4	4	1	23	18
ARCHIVES PLAZA	6	9	13	8	7	2	1	1	27	19
13TH STREET	7	15	21	44	14	13	1	10	44	82
8TH & K	6	2	19	10	17	3	4	0	45	14
8TH & H	8	8	15	4	13	6	3	3	39	20
	79	79	172	172	91	91	31	31	373	373

**Quarterly Ridership Report
Period Ending June 30, 2017**

Average Weekday Ridership

Historical Trends by Station



BLUE LINE - TOTAL	Year Ended 6/30/11		Year Ended 6/30/12		Year Ended 6/30/13		Year Ended 6/30/2014		Year Ended 6/30/2015		Year Ended 6/30/2016		FY17 Q2 (4/1/17-6/30/17)		Percent Change FY16 to FY17 Q2	
	On	Off	On	Off	On	Off	On	Off	On	Off	On	Off	On	Off	On	Off
WATT / I-80	1,785	1,825	2,164	2,108	2,157	2,088	2,020	2,130	1,871	1,859	1,884	1,748	1,682	1,324	-11%	-24%
WATT I-80 WEST	143	150	116	116	131	127	118	165	91	97	130	131	184	100	42%	-24%
ROSEVILLE RD	677	713	633	736	633	635	576	596	527	558	564	683	629	699	11%	2%
MARCONI / ARCADE	827	716	916	870	1,057	959	1,062	988	825	866	1,045	914	835	690	-20%	-25%
SWANSTON	271	294	269	299	313	304	341	393	346	353	308	381	210	317	-32%	-17%
ROYAL OAKS	429	398	515	417	588	539	602	535	633	612	599	592	563	449	-6%	-24%
ARDEN / DEL PASO	1,186	1,366	1,361	1,606	1,297	1,457	1,316	1,394	1,203	1,319	1,194	1,270	919	985	-23%	-22%
GLOBE AVENUE	243	253	296	301	297	288	304	304	356	357	316	298	330	282	4%	-6%
ALKALI FLAT / LA VALENTINA	920	948	949	978	1,086	1,020	1,076	1,058	951	979	1,025	1,001	869	860	-15%	-14%
12TH & I STREETS	512	551	612	662	504	591	576	577	522	598	629	668	553	594	-12%	-11%
CATHEDRAL SQUARE	885	893	846	939	743	927	809	871	715	1,035	913	968	820	969	-10%	-2%
7TH / 9TH & K	1,825	1,652	2,022	1,887	1,921	1,890	1,943	1,825	1,381	1,042	1,466	1,128	716	558	-51%	-51%
7TH / 8TH & CAPITOL	701	616	673	629	611	637	588	593	809	705	766	830	1,292	1,356	69%	63%
8TH & O STREETS	754	668	763	679	675	693	693	707	737	651	843	769	774	737	-8%	-4%
ARCHIVES PLAZA	478	484	519	487	489	491	520	477	522	483	550	498	604	606	10%	22%
13TH STREET	346	392	429	416	508	472	494	478	664	518	641	619	558	641	-13%	4%
16TH STREET	1,767	1,982	2,213	2,396	2,008	2,225	1,984	2,148	1,731	1,774	2,104	2,177	1,865	1,835	-11%	-16%
BROADWAY	863	924	1,030	930	1,034	1,012	1,014	929	800	927	1,042	997	810	894	-22%	-10%
4TH/WAYNE HULTGREN	637	570	760	577	684	594	723	532	562	422	704	611	534	514	-24%	-16%
CITY COLLEGE	1,433	1,393	1,757	1,682	1,689	1,789	1,772	1,626	1,257	945	1,506	1,434	984	1,118	-35%	-22%
FRUITRIDGE	535	552	675	682	642	618	612	577	462	613	636	568	569	574	-10%	1%
47TH AVE	649	576	717	728	763	682	720	733	623	729	615	773	655	709	7%	-8%
FLORIN	1,383	1,341	1,508	1,723	1,606	1,631	1,590	1,783	1,340	1,602	1,322	1,493	1,112	1,263	-16%	-15%
MEADOWVIEW	2,443	2,437	2,813	2,706	2,774	2,542	2,460	2,493	2,057	1,940	1,267	1,367	1,113	1,149	-12%	-16%
FRANKLIN	-	-	-	-	-	-	-	-	-	-	550	627	642	612	17%	-2%
CENTER PKWY	-	-	-	-	-	-	-	-	-	-	337	327	346	308	3%	-6%
CRC	-	-	-	-	-	-	-	-	-	-	1,234	1,292	1,365	1,389	11%	8%
	21,693	21,692	24,555	24,555	24,209	24,210	23,912	23,912	20,984	20,984	24,185	24,185	21,533	21,533	-11%	-11%

Average Weekday Ridership

Historical Trends by Station



GOLD LINE - TOTAL	Year Ended 6/30/11		Year Ended 6/30/12		Year Ended 6/30/13		Year Ended 6/30/2014		Year Ended 6/30/2015		Year Ended 6/30/2016		FY17 Q2 (4/1/17-6/30/17)		Percent Change FY16 to FY17 Q2	
	On	Off	On	Off	On	Off	On	Off	On	Off	On	Off	On	Off	On	Off
SAC VALLEY	490	561	504	482	387	363	439	299	483	301	400	350	378	407	-5%	16%
7TH & I	379	34	375	22	359	9	399	14	549	28	401	19	400	8	0%	-59%
8TH & H	-	-	55	304	23	279	21	317	36	398	32	366	50	341	60%	-7%
7TH & K	886	61	1,047	47	1,002	46	1,016	58	757	40	690	40	0	0	-100%	-100%
8TH & K	80	1,585	71	1,567	39	1,351	48	1,173	35	876	43	816	43	832	-1%	2%
7TH / 8TH & CAPITOL	633	649	610	572	483	511	498	511	568	686	462	661	946	634	105%	-4%
8TH & O STREETS	911	767	871	832	732	714	746	687	934	643	802	653	735	593	-8%	-9%
ARCHIVES PLAZA	723	745	691	699	628	660	620	663	681	616	694	641	682	609	-2%	-5%
13TH STREET	536	460	524	484	627	538	515	487	569	542	650	503	599	446	-8%	-11%
16TH STREET	2,168	2,169	2,437	2,367	2,146	2,317	1,982	2,148	1,997	1,918	2,061	2,048	1,720	1,869	-17%	-9%
23RD STREET	625	610	661	580	573	571	549	500	585	627	544	555	468	432	-14%	-22%
29TH STREET	1,597	1,622	1,817	1,684	1,767	1,571	1,659	1,599	1,544	1,690	1,593	1,578	1,528	1,356	-4%	-14%
39TH STREET	355	310	353	307	396	321	350	295	276	281	301	298	255	233	-15%	-22%
48TH STREET	194	237	204	227	206	231	216	211	250	215	208	238	179	235	-14%	-1%
59TH STREET	255	294	303	245	308	287	254	259	279	305	245	262	229	308	-6%	18%
65TH STREET	1,523	1,520	1,670	1,762	1,678	1,708	1,634	1,728	1,612	1,814	1,645	1,658	1,365	1,332	-17%	-20%
POWER INN ROAD	832	806	846	806	796	770	758	723	727	677	585	576	507	482	-13%	-16%
COLLEGE GREENS	769	752	823	779	795	736	808	773	892	854	825	796	628	652	-24%	-18%
WATT / MANLOVE	1,185	1,170	1,214	1,330	1,256	1,333	1,179	1,265	1,097	1,314	1,120	1,203	1,018	917	-9%	-24%
STARFIRE	439	358	511	388	480	416	443	375	545	290	353	382	267	308	-24%	-19%
TIBER	307	323	372	383	358	390	371	390	392	357	347	367	288	248	-17%	-32%
BUTTERFIELD	677	662	737	705	690	719	714	677	706	683	652	700	576	532	-12%	-24%
MATHER FIELD / MILLS	1,600	1,632	1,762	1,914	1,814	1,844	1,758	1,754	1,591	2,013	1,661	1,610	1,334	1,448	-20%	-10%
ZINFANDEL	878	833	942	921	1,040	1,010	1,064	1,119	1,155	1,211	1,021	1,053	767	765	-25%	-27%
CORDOVA TOWN CTR	652	601	684	698	661	602	638	618	702	588	614	553	545	466	-11%	-16%
SUNRISE	836	825	840	909	883	862	823	803	687	748	762	684	660	647	-13%	-5%
HAZEL	199	190	215	239	209	192	186	179	169	204	172	206	158	177	-9%	-14%
IRON POINT	446	466	481	537	473	497	480	488	541	450	422	481	422	439	0%	-9%
GLENN	325	308	289	294	284	247	241	261	183	219	248	228	204	223	-18%	-3%
HIST FOLSOM	512	460	533	510	508	511	486	513	465	420	421	449	410	423	-3%	-6%
	21,009	21,010	22,443	22,591	21,602	21,608	20,895	20,888	21,008	21,008	19,974	19,974	17,360	17,360	-13%	-13%


Average Weekday Ridership

Historical Trends by Station



GREEN LINE - TOTAL	Year Ended 6/30/13		Year Ended 6/30/14		Year Ended 6/30/2015		Year Ended 6/30/2016		FY17 Q2 (4/1/17-6/30/17)		Percent Change FY16 to FY17 Q2	
	On	Off	On	Off	On	Off	On	Off	On	Off	On	Off
RICHARDS BLVD	79	82	103	105	150	143	158	150	139	126	-12%	-16%
7TH & I	13	16	13	25	24	38	20	40	15	51	-24%	27%
7TH & K	25	34	26	41	22	48	21	51	0	0	-100%	-100%
7TH / 8TH & CAPITOL	16	13	22	14	35	25	34	18	41	44	22%	141%
8TH & O STREETS	21	17	28	23	28	27	29	25	23	18	-20%	-27%
ARCHIVES PLAZA	33	17	32	21	37	28	30	27	27	19	-12%	-29%
13TH STREET	51	68	58	74	76	104	59	96	44	82	-25%	-15%
8TH & K	38	35	48	38	55	36	61	20	45	14	-26%	-31%
8TH & H	19	15	22	12	38	16	33	18	39	20	16%	13%
	297	297	352	352	464	464	444	444	373	373	-16%	-16%