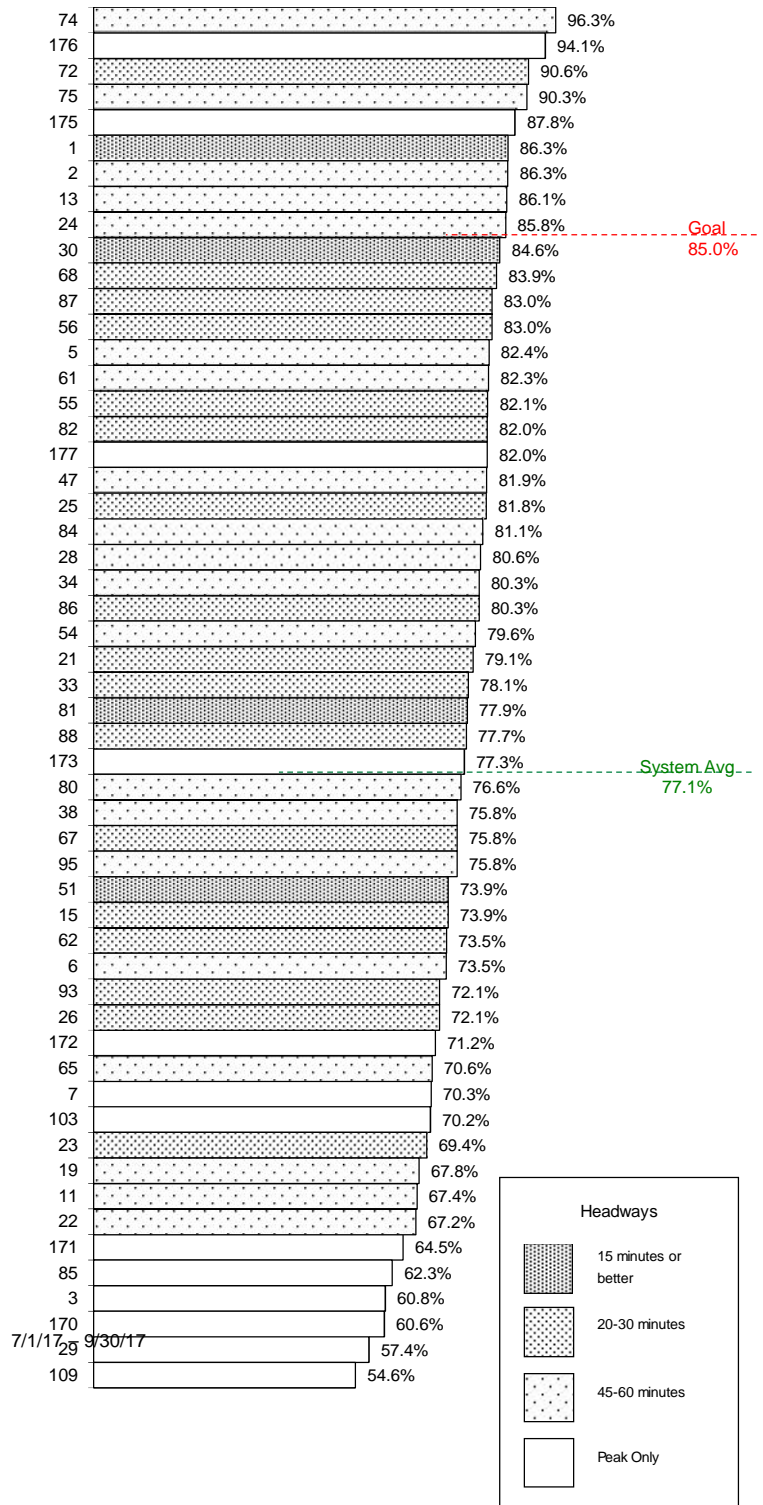

 **Regional Transit**
Quarterly Ridership Report
Period Ending September 30, 2017

Weekday Bus and CBS Routes

On-time performance is measured at time points, which are major stops shown on the public schedule (usually 4-6 per route).

A bus is considered on-time if it leaves its time point within 0 to 4:59 minutes of its scheduled time. On-time performance indicates the percent of time points where the bus was on-time according to this definition.

SacRT's on-time performance goal for fixed-route buses is 85 percent, or better. The third quarter average for weekday on-time performance is 77.1 percent; a slight drop from the second quarter results, which was 77.8 percent.

On-Time Performance


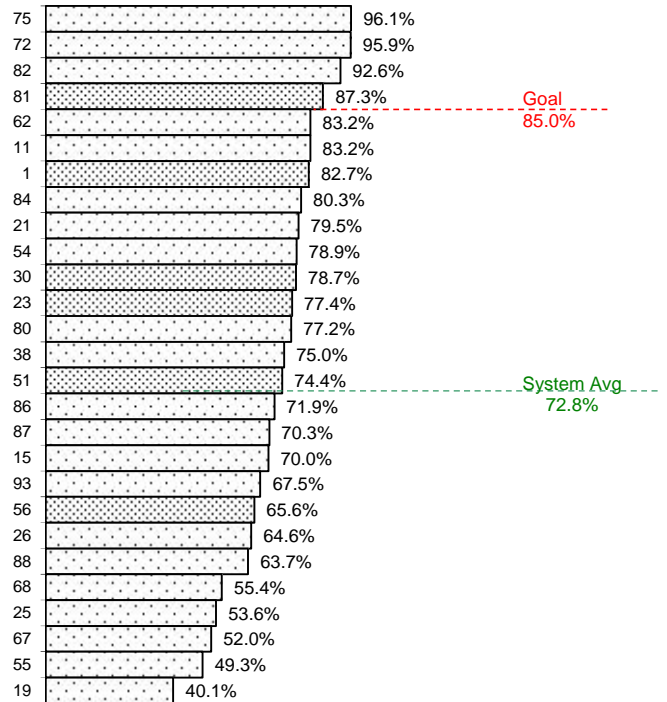
Quarterly Ridership Report
 Period Ending September 30, 2017

Saturday Bus Routes

On-time performance is measured at time points, which are major stops shown on the public schedule (usually 4-6 per route).

A bus is considered on-time if it leaves its time point within 0 to 4:59 minutes of its scheduled time. On-time performance indicates the percent of time points where the bus was on-time according to this definition.

SacRT's on-time performance goal for fixed-route buses is 85 percent, or better. The third quarter average for Saturday on-time performance is 72.8 percent, which is a slight improvement from the second quarter average of 72.3 percent.

On-Time Performance


7/1/17 – 9/30/17

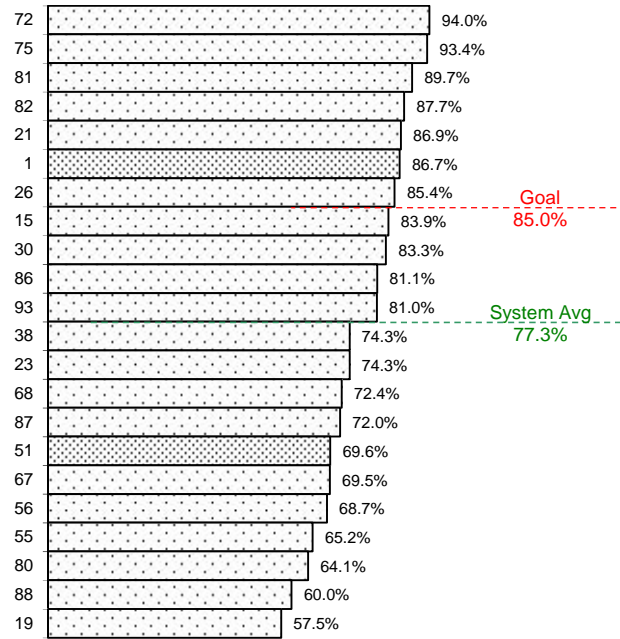
Quarterly Ridership Report
 Period Ending September 30, 2017

Sunday/Holiday Bus Routes

On-time performance is measured at time points, which are major stops along the route and shown on the public schedule (usually 4-6 per route).

A bus is considered on-time if it leaves its time point within 0 to 4:59 minutes of its scheduled time. On-time performance indicates the percent of time points where the bus was on-time according to this definition.

SacRT's on-time performance goal for fixed-route buses is 85 percent, or better. The third quarter average for Sunday on-time performance is 77.3 percent, which is slightly better than the first quarter average of 77.2 percent.

On-Time Performance


7/1/17 – 9/30/17

Light Rail On-Time Departures

Light rail on-time performance is measured at the starting point of a trip. A one-way trip is considered on-time if it departs within 0 to 4:59 minutes of its scheduled starting time.

SacRT's on-time performance goal for light rail trains is 97 percent on-time departures. The third quarter average for the Green line improved, and the Blue line and Gold line averages slightly decreased; however, they are still above the goal.

Calendar Year/Qtr	Blue	Gold	Green
2016-Q2	97.3%	98.4%	96.2%
2016-Q3	97.5%	97.7%	96.7%
2016-Q4	96.1%	97.2%	93.6%
2017-Q1	96.8%	97.8%	90.7%
2017-Q2	98.0%	98.4%	93.5%
2017-Q3	97.9%	98.3%	94.4%

**Quarterly Ridership Report
Period Ending September 30, 2017**

Average Daily Ridership by Time Period

FY18 - 7/1/17 - 9/30/17



BLUE LINE - TOTAL	AM Peak (6:00 - 9:00a)		Midday (9:01a - 3:29p)		PM Peak (3:30 - 6:00p)		Other Weekday (<6:00a or >6:00p)		Total Weekday	
	On	Off	On	Off	On	Off	On	Off	On	Off
WATT / I-80	434	259	491	528	242	295	282	284	1,449	1,367
WATT I-80 WEST	92	3	0	31	9	112	17	2	117	148
ROSEVILLE RD	379	20	48	214	36	417	62	30	525	680
MARCONI / ARCADE	297	173	201	287	144	266	103	71	745	798
SWANSTON	132	54	48	112	18	117	42	38	239	321
ROYAL OAKS	106	113	165	187	87	115	118	120	476	535
ARDEN / DEL PASO	172	131	335	429	121	279	231	183	859	1,022
GLOBE AVENUE	97	32	81	86	51	125	23	45	252	288
ALKALI FLAT / LA VALENT	168	134	356	295	105	106	108	132	737	667
12TH & I STREETS	55	370	230	141	271	55	62	68	617	634
CATHEDRAL SQUARE	75	392	312	259	394	82	148	85	929	818
7TH / 9TH & K	108	149	313	200	214	71	91	56	725	475
7TH / 8TH & CAPITOL	96	508	427	284	496	148	197	141	1,215	1,081
8TH & O STREETS	43	451	265	100	447	39	54	69	808	658
ARCHIVES PLAZA	30	308	174	90	352	31	36	41	591	470
13TH STREET	42	150	193	246	144	76	72	87	452	558
16TH STREET	215	633	717	690	623	309	333	322	1,888	1,953
BROADWAY	139	208	324	298	185	158	167	156	815	819
4TH/WAYNE HULTGREN	114	94	318	80	92	107	43	43	566	323
CITY COLLEGE	130	420	549	387	309	130	169	115	1,157	1,052
FRUITRIDGE	120	35	173	224	61	116	74	88	428	462
47TH AVE	289	47	141	239	56	204	80	118	566	608
FLORIN	336	143	319	481	146	319	157	222	958	1,164
MEADOWVIEW	427	85	282	398	111	428	143	211	963	1,123
FRANKLIN	377	25	109	254	53	418	82	97	622	795
CENTER PKWY	84	26	117	69	61	90	39	50	301	235
CRC	601	197	446	526	260	474	159	218	1,467	1,414
	5,159	5,159	7,133	7,133	5,087	5,087	3,091	3,091	20,470	20,470

Average Daily Ridership by Time Period

FY18 - 7/1/17 - 9/30/17



GOLD LINE - TOTAL	AM Peak (6:00 - 9:00a)		Midday (9:01a - 3:29p)		PM Peak (3:30 - 6:00p)		Other Weekday (<6:00a or >6:00p)		Total Weekday	
	On	Off	On	Off	On	Off	On	Off	On	Off
SAC VALLEY	91	79	157	153	131	71	71	40	451	344
7TH & I	51	2	132	7	321	4	41	2	544	15
8TH & H	5	232	25	101	12	29	0	16	42	378
7TH & K	0	0	18	0	0	0	4	2	22	2
8TH & K	0	172	18	308	10	146	0	158	28	785
7TH / 8TH & CAPITOL	104	419	313	200	560	92	202	60	1,179	772
8TH & O STREETS	82	471	204	154	473	52	49	49	808	727
ARCHIVES PLAZA	58	414	218	153	412	39	55	25	743	631
13TH STREET	103	95	254	180	120	112	100	67	578	454
16TH STREET	438	522	581	646	378	402	295	324	1,692	1,895
23RD STREET	204	127	163	152	113	148	66	86	547	513
29TH STREET	227	342	635	601	296	193	216	162	1,375	1,298
39TH STREET	56	62	92	76	55	59	47	38	250	234
48TH STREET	60	49	77	58	42	87	29	26	208	220
59TH STREET	98	58	69	82	63	74	21	27	251	241
65TH STREET	311	292	541	477	217	417	224	230	1,293	1,417
POWER INN ROAD	134	107	173	190	103	143	76	72	486	512
COLLEGE GREENS	123	121	279	254	134	140	79	102	616	617
WATT / MANLOVE	473	106	283	343	143	462	125	162	1,024	1,073
STARFIRE	112	31	114	101	29	100	54	80	309	311
TIBER	87	58	76	79	48	96	60	68	271	302
BUTTERFIELD	152	168	200	132	180	161	74	96	606	556
MATHER FIELD / MILLS	418	190	468	476	181	517	243	262	1,310	1,445
ZINFANDEL	201	125	266	267	208	198	181	154	856	744
CORDOVA TOWN CTR	180	80	202	166	77	159	102	129	561	535
SUNRISE	276	181	165	187	148	363	122	131	711	861
HAZEL	66	33	32	38	35	35	18	22	151	127
IRON POINT	213	81	76	167	97	173	39	24	426	445
GLENN	119	42	75	65	54	84	26	38	274	229
HIST FOLSOM	260	42	90	183	87	170	58	25	494	421
	4,703	4,703	5,996	5,996	4,728	4,727	2,677	2,677	18,103	18,103

Quarterly Ridership Report
 Period Ending September 30, 2017

Average Daily Ridership by Time Period

FY18 - 7/1/17 - 9/30/17



GREEN LINE - TOTAL	AM Peak (6:00 - 9:00a)		Midday (9:01a - 3:29p)		PM Peak (3:30 - 6:00p)		Other Weekday (<6:00a or >6:00p)		Total Weekday	
	On	Off	On	Off	On	Off	On	Off	On	Off
RICHARDS BLVD	48	20	67	51	16	33	14	27	145	130
7TH & I	4	16	16	18	4	6	0	3	23	43
7TH & K	0	0	0	3	0	0	0	0	0	3
7TH / 8TH & CAPITOL	6	14	25	21	14	9	5	3	50	46
8TH & O STREETS	5	6	7	7	8	5	6	0	26	18
ARCHIVES PLAZA	3	8	10	9	11	4	6	0	30	21
13TH STREET	10	15	30	62	8	15	12	15	59	107
8TH & K	6	1	13	5	10	3	15	9	44	17
8TH & H	6	7	12	5	6	3	3	3	27	17
	88	86	181	181	76	76	60	60	404	403

**Quarterly Ridership Report
Period Ending September 30, 2017**

Average Weekday Ridership

Historical Trends by Station



BLUE LINE - TOTAL	Year Ended 6/30/12		Year Ended 6/30/13		Year Ended 6/30/2014		Year Ended 6/30/2015		Year Ended 6/30/2016		Year Ended 6/30/2017		FY18 Q3 (7/1/17-9/30/17)		Percent Change FY17 to FY18 Q3	
	On	Off	On	Off	On	Off	On	Off	On	Off	On	Off	On	Off	On	Off
WATT / I-80	2,164	2,108	2,157	2,088	2,020	2,130	1,871	1,859	1,884	1,748	1,682	1,324	1,449	1,367	-14%	3%
WATT I-80 WEST	116	116	131	127	118	165	91	97	130	131	184	100	117	148	-36%	48%
ROSEVILLE RD	633	736	633	635	576	596	527	558	564	683	629	699	525	680	-16%	-3%
MARCONI / ARCADE	916	870	1,057	959	1,062	988	825	866	1,045	914	835	690	745	798	-11%	16%
SWANSTON	269	299	313	304	341	393	346	353	308	381	210	317	239	321	14%	1%
ROYAL OAKS	515	417	588	539	602	535	633	612	599	592	563	449	476	535	-15%	19%
ARDEN / DEL PASO	1,361	1,606	1,297	1,457	1,316	1,394	1,203	1,319	1,194	1,270	919	985	859	1,022	-6%	4%
GLOBE AVENUE	296	301	297	288	304	304	356	357	316	298	330	282	252	288	-24%	2%
ALKALI FLAT / LA VALENTINA	949	978	1,086	1,020	1,076	1,058	951	979	1,025	1,001	869	860	737	667	-15%	-22%
12TH & I STREETS	612	662	504	591	576	577	522	598	629	668	553	594	617	634	12%	7%
CATHEDRAL SQUARE	846	939	743	927	809	871	715	1,035	913	988	820	969	929	818	13%	-16%
7TH / 9TH & K	2,022	1,887	1,921	1,890	1,943	1,825	1,381	1,042	1,466	1,128	716	558	725	475	1%	-15%
7TH / 8TH & CAPITOL	673	629	611	637	588	593	809	705	766	830	1,292	1,356	1,215	1,081	-6%	-20%
8TH & O STREETS	763	679	675	693	693	707	737	651	843	769	774	737	808	658	4%	-11%
ARCHIVES PLAZA	519	487	489	491	520	477	522	483	550	498	604	606	591	470	-2%	-22%
13TH STREET	429	416	508	472	494	478	664	518	641	619	558	641	452	558	-19%	-13%
16TH STREET	2,213	2,396	2,008	2,225	1,984	2,148	1,731	1,774	2,104	2,177	1,865	1,835	1,888	1,953	1%	6%
BROADWAY	1,030	930	1,034	1,012	1,014	929	800	927	1,042	997	810	894	815	819	1%	-8%
4TH/WAYNE HULTGREN	760	577	684	594	723	532	562	422	704	611	534	514	566	323	6%	-37%
CITY COLLEGE	1,757	1,682	1,689	1,789	1,772	1,626	1,257	945	1,506	1,434	984	1,118	1,157	1,052	18%	-6%
FRUITRIDGE	675	682	642	618	612	577	462	613	636	568	569	574	428	462	-25%	-19%
47TH AVE	717	728	763	682	720	733	623	729	615	773	655	709	566	608	-14%	-14%
FLORIN	1,508	1,723	1,606	1,631	1,590	1,783	1,340	1,602	1,322	1,493	1,112	1,263	958	1,164	-14%	-8%
MEADOWVIEW	2,813	2,706	2,774	2,542	2,460	2,493	2,057	1,940	1,267	1,367	1,113	1,149	963	1,123	-13%	-2%
FRANKLIN	-	-	-	-	-	-	-	-	550	627	642	612	622	795	-3%	30%
CENTER PKWY	-	-	-	-	-	-	-	-	337	327	346	308	301	235	-13%	-24%
CRC	-	-	-	-	-	-	-	-	1,234	1,292	1,365	1,389	1,467	1,414	7%	2%
	24,555	24,555	24,209	24,210	23,912	23,912	20,984	20,984	24,185	24,185	21,533	21,533	20,470	20,470	-5%	-5%

Average Weekday Ridership

Historical Trends by Station



GOLD LINE - TOTAL	Year Ended 6/30/12		Year Ended 6/30/13		Year Ended 6/30/2014		Year Ended 6/30/2015		Year Ended 6/30/2016		FY17 Q2 (4/1/17-6/30/17)		FY18 Q3 (7/1/17-9/30/17)		Percent Change FY17 to FY18 Q3	
	On	Off	On	Off	On	Off	On	Off	On	Off	On	Off	On	Off	On	Off
SAC VALLEY	504	482	387	363	439	299	483	301	400	350	378	407	451	344	19%	-16%
7TH & I	375	22	359	9	399	14	549	28	401	19	400	8	544	15	36%	91%
8TH & H	55	304	23	279	21	317	36	398	32	366	50	341	42	378	-17%	11%
7TH & K	1,047	47	1,002	46	1,016	58	757	40	690	40	-	-	-	-	-	-
8TH & K	71	1,567	39	1,351	48	1,173	35	876	43	816	43	832	28	785	-35%	-6%
7TH / 8TH & CAPITOL	610	572	483	511	498	511	568	686	462	661	946	634	1,179	772	25%	22%
8TH & O STREETS	871	832	732	714	746	687	934	643	802	653	735	593	808	727	10%	22%
ARCHIVES PLAZA	691	699	628	660	620	663	681	616	694	641	682	609	743	631	9%	4%
13TH STREET	524	484	627	538	515	487	569	542	650	503	599	446	578	454	-4%	2%
16TH STREET	2,437	2,367	2,146	2,317	1,982	2,148	1,997	1,918	2,061	2,048	1,720	1,869	1,692	1,895	-2%	1%
23RD STREET	661	580	573	571	549	500	585	627	544	555	468	432	547	513	17%	19%
29TH STREET	1,817	1,684	1,767	1,571	1,659	1,599	1,544	1,690	1,593	1,578	1,528	1,356	1,375	1,298	-10%	-4%
39TH STREET	353	307	396	321	350	295	276	281	301	298	255	233	250	234	-2%	1%
48TH STREET	204	227	206	231	216	211	250	215	208	238	179	235	208	220	16%	-7%
59TH STREET	303	245	308	287	254	259	279	305	245	262	229	308	251	241	9%	-22%
65TH STREET	1,670	1,762	1,678	1,708	1,634	1,728	1,612	1,814	1,645	1,658	1,365	1,332	1,293	1,417	-5%	6%
POWER INN ROAD	846	806	796	770	758	723	727	677	585	576	507	482	486	512	-4%	6%
COLLEGE GREENS	823	779	795	736	808	773	892	854	825	796	628	652	616	617	-2%	-5%
WATT / MANLOVE	1,214	1,330	1,256	1,333	1,179	1,265	1,097	1,314	1,120	1,203	1,018	917	1,024	1,073	1%	17%
STARFIRE	511	388	480	416	443	375	545	290	353	382	267	308	309	311	16%	1%
TIBER	372	383	358	390	371	390	392	357	347	367	288	248	271	302	-6%	22%
BUTTERFIELD	737	705	690	719	714	677	706	683	652	700	576	532	606	556	5%	5%
MATHER FIELD / MILLS	1,762	1,914	1,814	1,844	1,758	1,754	1,591	2,013	1,661	1,610	1,334	1,448	1,310	1,445	-2%	0%
ZINFANDEL	942	921	1,040	1,010	1,064	1,119	1,155	1,211	1,021	1,053	767	765	856	744	12%	-3%
CORDOVA TOWN CTR	684	698	661	602	638	618	702	588	614	553	545	466	561	535	3%	15%
SUNRISE	840	909	883	862	823	803	687	748	762	684	660	647	711	861	8%	33%
HAZEL	215	239	209	192	186	179	169	204	172	206	158	177	151	127	-4%	-28%
IRON POINT	481	537	473	497	480	488	541	450	422	481	422	439	426	445	1%	1%
GLENN	289	294	284	247	241	261	183	219	248	228	204	223	274	229	34%	3%
HIST FOLSOM	533	510	508	511	486	513	465	420	421	449	410	423	494	421	21%	-1%
	22,443	22,591	21,602	21,608	20,895	20,888	21,008	21,008	19,974	19,974	17,360	17,360	18,103	18,103	4%	4%

Quarterly Ridership Report
 Period Ending September 30, 2017

Average Weekday Ridership

Historical Trends by Station



GREEN LINE - TOTAL	Year Ended 6/30/13		Year Ended 6/30/14		Year Ended 6/30/2015		Year Ended 6/30/2016		Year Ended 6/30/2017		FY18 Q3 (7/1/17-9/30/17)		Percent Change FY17 to FY18 Q3	
	On	Off	On	Off	On	Off	On	Off	On	Off	On	Off	On	Off
RICHARDS BLVD	79	82	103	105	150	143	158	150	139	126	145	130	4%	3%
7TH & I	13	16	13	25	24	38	20	40	15	51	23	43	54%	-15%
7TH & K	25	34	26	41	22	48	21	51	-	-	-	-	-	-
7TH / 8TH & CAPITOL	16	13	22	14	35	25	34	18	41	44	50	46	21%	5%
8TH & O STREETS	21	17	28	23	28	27	29	25	23	18	26	18	12%	1%
ARCHIVES PLAZA	33	17	32	21	37	28	30	27	27	19	30	21	14%	12%
13TH STREET	51	68	58	74	76	104	59	96	44	82	59	107	35%	31%
8TH & K	38	35	48	38	55	36	61	20	45	14	44	17	-3%	25%
8TH & H	19	15	22	12	38	16	33	18	39	20	27	17	-30%	-16%
	297	297	352	352	464	464	444	444	373	373	404	403	8%	8%