
 **Regional Transit**
Quarterly Ridership Report
Period Ending December 31, 2017

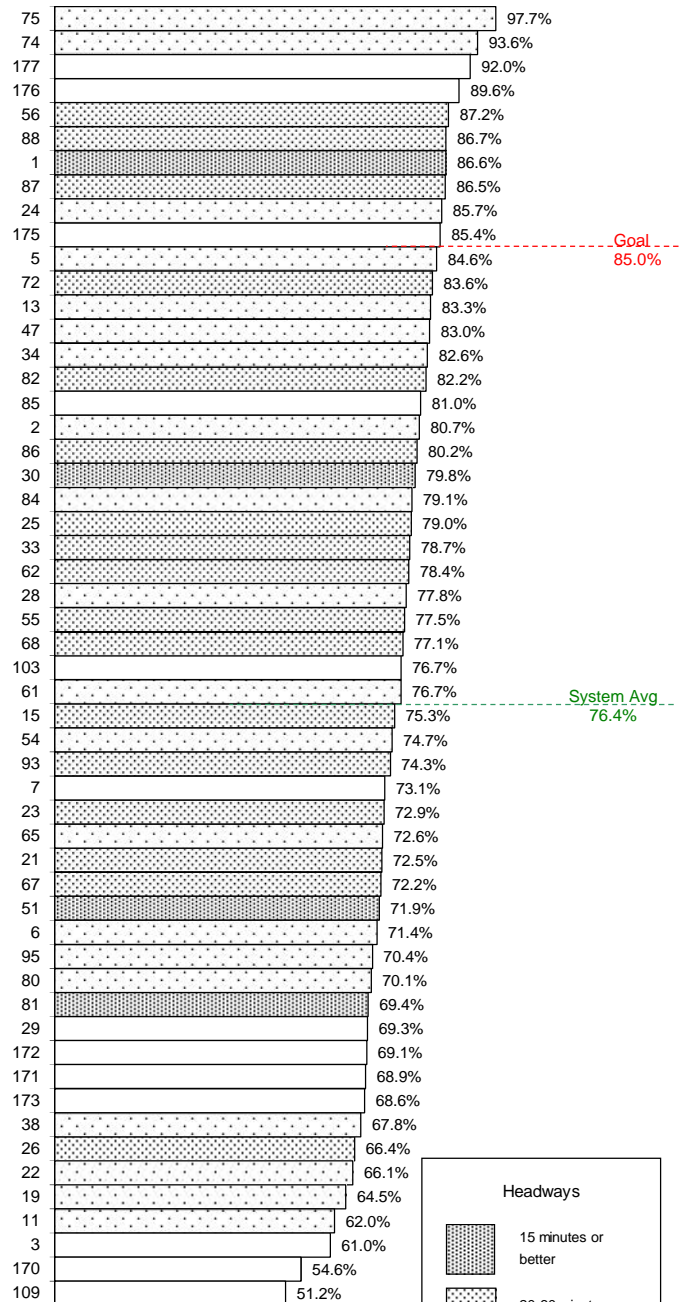
Quarterly Ridership Report
 Period Ending December 31, 2017

Weekday Bus and CBS Routes

On-time performance is measured at time points, which are major stops shown on the public schedule (usually 4-6 per route).

A bus is considered on-time if it leaves its time point within 0 to 4:59 minutes of its scheduled time. On-time performance indicates the percent of time points where the bus was on-time according to this definition.

SacRT's on-time performance goal for fixed-route buses is 85 percent, or better. The fourth quarter average for weekday on-time performance is 76.4 percent; a drop from third quarter results, which was 77.1 percent.

On-Time Performance


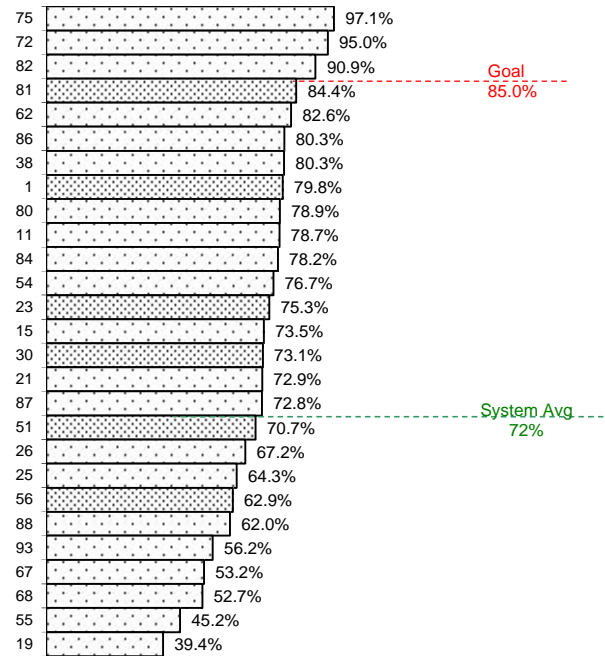
Quarterly Ridership Report
 Period Ending December 31, 2017

Saturday Bus Routes

On-time performance is measured at time points, which are major stops shown on the public schedule (usually 4-6 per route).

A bus is considered on-time if it leaves its time point within 0 to 4:59 minutes of its scheduled time. On-time performance indicates the percent of time points where the bus was on-time according to this definition.

SacRT's on-time performance goal for fixed-route buses is 85 percent, or better. The fourth quarter average for Saturday on-time performance is 72 percent, which is a slight decrease from the third quarter average of 72.8 percent.

On-Time Performance


10/1/17 – 12/31/17

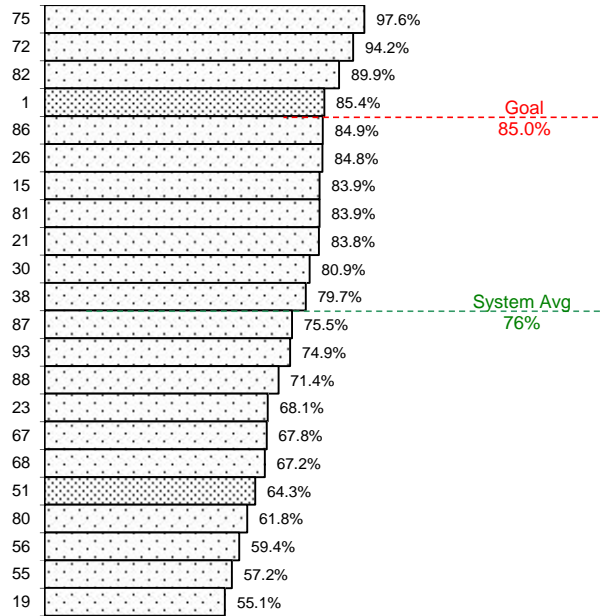
Quarterly Ridership Report
Period Ending December 31, 2017

Sunday/Holiday Bus Routes

On-time performance is measured at time points, which are major stops along the route and shown on the public schedule (usually 4-6 per route).

A bus is considered on-time if it leaves its time point within 0 to 4:59 minutes of its scheduled time. On-time performance indicates the percent of time points where the bus was on-time according to this definition.

SacRT's on-time performance goal for fixed-route buses is 85 percent, or better. The fourth quarter average for Sunday on-time performance is 76 percent, which is slightly less than the third quarter average of 77.3 percent.

On-Time Performance


10/1/17 – 12/31/17

Light Rail On-Time Departures

Light rail on-time performance is measured at the starting point of a trip. A one-way trip is considered on-time if it departs within 0 to 4:59 minutes of its scheduled starting time.

SacRT's on-time performance goal for light rail trains is 97 percent on-time departures. The fourth quarter average for the Blue line improved, and the Gold line and Green line averages decreased.

Calendar Year/Qtr	Blue	Gold	Green
2016-Q2	97.3%	98.4%	96.2%
2016-Q3	97.5%	97.7%	96.7%
2016-Q4	96.1%	97.2%	93.6%
2017-Q1	96.8%	97.8%	90.7%
2017-Q2	98.0%	98.4%	93.5%
2017-Q3	97.9%	98.3%	94.4%
2017-Q4	98.3%	97.9%	90.9%

**Quarterly Ridership Report
Period Ending December 31, 2017**

Average Daily Ridership by Time Period

1/1/17 - 12/31/17



BLUE LINE - TOTAL	AM Peak (6:00 - 9:00a)		Midday (9:01a - 3:29p)		PM Peak (3:30 - 6:00p)		Other Weekday (<6:00a or >6:00p)		Total Weekday	
	On	Off	On	Off	On	Off	On	Off	On	Off
WATT / I-80	436	212	546	557	227	324	288	297	1,498	1,390
WATT I-80 WEST	92	2	7	38	6	96	17	5	121	140
ROSEVILLE RD	374	14	63	210	36	439	87	42	560	705
MARCONI / ARCADE	265	92	259	275	112	271	108	102	745	741
SWANSTON	114	41	64	124	24	124	47	41	249	331
ROYAL OAKS	99	79	180	176	86	102	102	95	467	452
ARDEN / DEL PASO	172	130	364	421	134	249	198	182	868	981
GLOBE AVENUE	80	31	84	95	43	92	47	47	254	265
ALKALI FLAT / LA VALENT	156	153	407	373	103	115	98	130	763	771
12TH & I STREETS	35	284	186	142	274	46	66	56	561	529
CATHEDRAL SQUARE	73	390	298	288	332	72	125	91	829	841
7TH / 9TH & K	79	160	328	213	199	76	118	76	724	524
7TH / 8TH & CAPITOL	92	505	434	312	484	139	185	180	1,196	1,137
8TH & O STREETS	51	440	231	117	457	53	54	64	794	674
ARCHIVES PLAZA	31	338	156	110	363	19	37	40	586	508
13TH STREET	59	139	216	263	130	92	88	70	493	564
16TH STREET	226	547	698	741	558	266	324	285	1,806	1,840
BROADWAY	128	201	331	345	191	156	142	144	791	846
4TH/WAYNE HULTGREN	92	185	340	103	110	94	59	51	602	433
CITY COLLEGE	131	359	554	504	272	129	171	84	1,128	1,076
FRUITRIDGE	161	61	179	213	75	127	83	84	498	485
47TH AVE	297	55	158	242	59	239	76	119	590	655
FLORIN	304	182	383	445	156	281	162	215	1,005	1,123
MEADOWVIEW	398	82	313	399	136	371	140	229	987	1,082
FRANKLIN	355	20	116	201	47	378	74	105	592	704
CENTER PKWY	77	57	131	72	52	85	38	44	298	258
CRC	537	157	444	490	215	443	175	229	1,371	1,319
	4,916	4,916	7,471	7,471	4,878	4,878	3,110	3,110	20,375	20,375

Average Daily Ridership by Time Period

1/1/17 - 12/31/17



GOLD LINE - TOTAL	AM Peak (6:00 - 9:00a)		Midday (9:01a - 3:29p)		PM Peak (3:30 - 6:00p)		Other Weekday (<6:00a or >6:00p)		Total Weekday	
	On	Off	On	Off	On	Off	On	Off	On	Off
SAC VALLEY	91	78	146	153	134	87	64	51	434	371
7TH & I	36	4	138	5	260	3	42	1	475	13
8TH & H	5	217	22	94	21	29	0	29	47	369
7TH & K	0	0	4	0	0	0	1	0	5	0
8TH & K	3	208	18	332	11	169	4	126	35	836
7TH / 8TH & CAPITOL	101	366	330	185	475	82	170	88	1,076	722
8TH & O STREETS	81	439	204	139	452	47	45	61	781	687
ARCHIVES PLAZA	53	429	227	152	379	42	38	37	697	660
13TH STREET	108	107	264	199	130	106	93	52	595	464
16TH STREET	363	492	692	743	440	412	273	279	1,768	1,925
23RD STREET	181	107	145	162	108	146	74	69	509	484
29TH STREET	258	352	723	672	318	206	172	134	1,471	1,363
39TH STREET	72	56	88	97	59	63	41	33	260	249
48TH STREET	49	50	74	75	46	56	31	31	199	212
59TH STREET	96	66	81	86	59	85	29	35	265	272
65TH STREET	327	301	585	605	278	355	225	181	1,415	1,443
POWER INN ROAD	129	99	206	197	99	134	72	66	506	496
COLLEGE GREENS	134	124	323	286	116	141	85	104	658	655
WATT / MANLOVE	461	123	352	370	147	439	129	151	1,089	1,084
STARFIRE	108	25	114	107	37	101	53	78	313	311
TIBER	105	51	99	95	37	100	48	52	288	299
BUTTERFIELD	147	193	198	133	177	135	58	110	580	570
MATHER FIELD / MILLS	437	211	541	505	190	470	221	248	1,388	1,434
ZINFANDEL	184	124	300	326	186	214	153	138	822	802
CORDOVA TOWN CTR	180	78	208	199	82	177	87	80	558	534
SUNRISE	320	118	212	198	157	312	118	118	808	746
HAZEL	72	41	42	47	45	57	16	25	176	172
IRON POINT	238	84	113	178	78	225	51	23	481	510
GLENN	84	47	39	49	50	95	25	32	198	224
HIST FOLSOM	201	29	72	168	62	145	60	44	394	386
	4,622	4,622	6,557	6,557	4,634	4,634	2,479	2,479	18,292	18,292

Quarterly Ridership Report
 Period Ending December 31, 2017

Average Daily Ridership by Time Period

1/1/17 - 12/31/17



GREEN LINE - TOTAL	AM Peak (6:00 - 9:00a)		Midday (9:01a - 3:29p)		PM Peak (3:30 - 6:00p)		Other Weekday (<6:00a or >6:00p)		Total Weekday	
	On	Off	On	Off	On	Off	On	Off	On	Off
RICHARDS BLVD	40	20	76	50	24	33	10	12	150	116
7TH & I	4	14	11	24	8	10	1	3	23	51
7TH & K	0	0	0	1	0	0	0	0	0	1
7TH / 8TH & CAPITOL	7	11	18	24	8	9	9	4	41	47
8TH & O STREETS	6	6	9	9	7	5	3	1	25	21
ARCHIVES PLAZA	4	9	11	9	7	4	1	0	24	22
13TH STREET	9	15	27	51	11	18	6	11	53	95
8TH & K	7	1	19	8	10	3	6	3	41	15
8TH & H	7	7	11	6	9	3	1	2	29	18
	83	83	182	182	84	84	37	37	386	386

Quarterly Ridership Report
Period Ending December 31, 2017

Average Weekday Ridership

Historical Trends by Station



BLUE LINE - TOTAL	Year Ended 6/30/12		Year Ended 6/30/13		Year Ended 6/30/2014		Year Ended 6/30/2015		Year Ended 6/30/2016		Year Ended 6/30/2017		Q4 - rolling 12 months (1/1/17-12/31/17)		Percent Change FY17 to Q4	
	On	Off	On	Off	On	Off	On	Off	On	Off	On	Off	On	Off	On	Off
WATT / I-80	2,164	2,108	2,157	2,088	2,020	2,130	1,871	1,859	1,884	1,748	1,682	1,324	1,498	1,390	-11%	5%
WATT I-80 WEST	116	116	131	127	118	165	91	97	130	131	184	100	121	140	-34%	40%
ROSEVILLE RD	633	736	633	635	576	596	527	558	564	683	629	699	560	705	-11%	1%
MARCONI / ARCADE	916	870	1,057	959	1,062	988	825	866	1,045	914	835	690	745	741	-11%	7%
SWANSTON	269	299	313	304	341	393	346	353	308	381	210	317	249	331	18%	4%
ROYAL OAKS	515	417	588	539	602	535	633	612	599	592	563	449	467	452	-17%	1%
ARDEN / DEL PASO	1,361	1,606	1,297	1,457	1,316	1,394	1,203	1,319	1,194	1,270	919	985	868	981	-6%	0%
GLOBE AVENUE	296	301	297	288	304	304	356	357	316	298	330	282	254	265	-23%	-6%
ALKALI FLAT / LA VALENTINA	949	978	1,086	1,020	1,076	1,058	951	979	1,025	1,001	869	860	763	771	-12%	-10%
12TH & I STREETS	612	662	504	591	576	577	522	598	629	668	553	594	561	529	1%	-11%
CATHEDRAL SQUARE	846	939	743	927	809	871	715	1,035	913	988	820	969	829	841	1%	-13%
7TH / 9TH & K	2,022	1,887	1,921	1,890	1,943	1,825	1,381	1,042	1,466	1,128	716	558	724	524	1%	-6%
7TH / 8TH & CAPITOL	673	629	611	637	588	593	809	705	766	830	1,292	1,356	1,196	1,137	-7%	-16%
8TH & O STREETS	763	679	675	693	693	707	737	651	843	769	774	737	794	674	3%	-9%
ARCHIVES PLAZA	519	487	489	491	520	477	522	483	550	498	604	606	586	508	-3%	-16%
13TH STREET	429	416	508	472	494	478	664	518	641	619	558	641	493	564	-12%	-12%
16TH STREET	2,213	2,396	2,008	2,225	1,984	2,148	1,731	1,774	2,104	2,177	1,865	1,835	1,806	1,840	-3%	0%
BROADWAY	1,030	930	1,034	1,012	1,014	929	800	927	1,042	997	810	894	791	846	-2%	-5%
4TH/WAYNE HULTGREN	760	577	684	594	723	532	562	422	704	611	534	514	602	433	13%	-16%
CITY COLLEGE	1,757	1,682	1,689	1,789	1,772	1,626	1,257	945	1,506	1,434	984	1,118	1,128	1,076	15%	-4%
FRUITRIDGE	675	682	642	618	612	577	462	613	636	568	569	574	498	485	-13%	-15%
47TH AVE	717	728	763	682	720	733	623	729	615	773	655	709	590	655	-10%	-8%
FLORIN	1,508	1,723	1,606	1,631	1,590	1,783	1,340	1,602	1,322	1,493	1,112	1,263	1,005	1,123	-10%	-11%
MEADOWVIEW	2,813	2,706	2,774	2,542	2,460	2,493	2,057	1,940	1,267	1,367	1,113	1,149	987	1,082	-11%	-6%
FRANKLIN	-	-	-	-	-	-	-	-	550	627	642	612	592	704	-8%	15%
CENTER PKWY	-	-	-	-	-	-	-	-	337	327	346	308	298	258	-14%	-16%
CRC	-	-	-	-	-	-	-	-	1,234	1,292	1,365	1,389	1,371	1,319	0%	-5%
	24,555	24,555	24,209	24,210	23,912	23,912	20,984	20,984	24,185	24,185	21,533	21,533	20,375	20,375	-5%	-5%

Average Weekday Ridership

Historical Trends by Station



GOLD LINE - TOTAL	Year Ended 6/30/12		Year Ended 6/30/13		Year Ended 6/30/2014		Year Ended 6/30/2015		Year Ended 6/30/2016		FY17 Q2 (4/1/17-6/30/17)		Q4 - rolling 12 months (1/1/17-12/31/17)		Percent Change FY17 to Q4	
	On	Off	On	Off	On	Off	On	Off	On	Off	On	Off	On	Off	On	Off
SAC VALLEY	504	482	387	363	439	299	483	301	400	350	378	407	434	371	15%	-9%
7TH & I	375	22	359	9	399	14	549	28	401	19	400	8	475	13	19%	68%
8TH & H	55	304	23	279	21	317	36	398	32	366	50	341	47	369	-6%	8%
7TH & K	1,047	47	1,002	46	1,016	58	757	40	690	40	-	-	5	0	-	-
8TH & K	71	1,567	39	1,351	48	1,173	35	876	43	816	43	832	35	836	-17%	0%
7TH / 8TH & CAPITOL	610	572	483	511	498	511	568	686	462	661	946	634	1,076	722	14%	14%
8TH & O STREETS	871	832	732	714	746	687	934	643	802	653	735	593	781	687	6%	16%
ARCHIVES PLAZA	691	699	628	660	620	663	681	616	694	641	682	609	697	660	2%	8%
13TH STREET	524	484	627	538	515	487	569	542	650	503	599	446	595	464	-1%	4%
16TH STREET	2,437	2,367	2,146	2,317	1,982	2,148	1,997	1,918	2,061	2,048	1,720	1,869	1,768	1,925	3%	3%
23RD STREET	661	580	573	571	549	500	585	627	544	555	468	432	509	484	9%	12%
29TH STREET	1,817	1,684	1,767	1,571	1,659	1,599	1,544	1,690	1,593	1,578	1,528	1,356	1,471	1,363	-4%	1%
39TH STREET	353	307	396	321	350	295	276	281	301	298	255	233	260	249	2%	7%
48TH STREET	204	227	206	231	216	211	250	215	208	238	179	235	199	212	11%	-10%
59TH STREET	303	245	308	287	254	259	279	305	245	262	229	308	265	272	16%	-12%
65TH STREET	1,670	1,762	1,678	1,708	1,634	1,728	1,612	1,814	1,645	1,658	1,365	1,332	1,415	1,443	4%	8%
POWER INN ROAD	846	806	796	770	758	723	727	677	585	576	507	482	506	496	0%	3%
COLLEGE GREENS	823	779	795	736	808	773	892	854	825	796	628	652	658	655	5%	1%
WATT / MANLOVE	1,214	1,330	1,256	1,333	1,179	1,265	1,097	1,314	1,120	1,203	1,018	917	1,089	1,084	7%	18%
STARFIRE	511	388	480	416	443	375	545	290	353	382	267	308	313	311	17%	1%
TIBER	372	383	358	390	371	390	392	357	347	367	288	248	288	299	0%	20%
BUTTERFIELD	737	705	690	719	714	677	706	683	652	700	576	532	580	570	1%	7%
MATHER FIELD / MILLS	1,762	1,914	1,814	1,844	1,758	1,754	1,591	2,013	1,661	1,610	1,334	1,448	1,388	1,434	4%	-1%
ZINFANDEL	942	921	1,040	1,010	1,064	1,119	1,155	1,211	1,021	1,053	767	765	822	802	7%	5%
CORDOVA TOWN CTR	684	698	661	602	638	618	702	588	614	553	545	466	558	534	2%	15%
SUNRISE	840	909	883	862	823	803	687	748	762	684	660	647	808	746	22%	15%
HAZEL	215	239	209	192	186	179	169	204	172	206	158	177	176	172	12%	-3%
IRON POINT	481	537	473	497	480	488	541	450	422	481	422	439	481	510	14%	16%
GLENN	289	294	284	247	241	261	183	219	248	228	204	223	198	224	-3%	0%
HIST FOLSOM	533	510	508	511	486	513	465	420	421	449	410	423	394	386	-4%	-9%
	22,443	22,591	21,602	21,608	20,895	20,888	21,008	21,008	19,974	19,974	17,360	17,360	18,103	18,103	4%	4%

Quarterly Ridership Report
 Period Ending December 31, 2017

Average Weekday Ridership

Historical Trends by Station



GREEN LINE - TOTAL	Year Ended 6/30/13		Year Ended 6/30/14		Year Ended 6/30/2015		Year Ended 6/30/2016		Year Ended 6/30/2017		Q4 - rolling 12 months (1/1/17-12/31/17)		Percent Change FY17 to FY18 Q3	
	On	Off	On	Off	On	Off	On	Off	On	Off	On	Off	On	Off
RICHARDS BLVD	79	82	103	105	150	143	158	150	139	126	150	116	8%	-8%
7TH & I	13	16	13	25	24	38	20	40	15	51	23	51	48%	0%
7TH & K	25	34	26	41	22	48	21	51	-	-	-	-	-	-
7TH / 8TH & CAPITOL	16	13	22	14	35	25	34	18	41	44	41	47	1%	8%
8TH & O STREETS	21	17	28	23	28	27	29	25	23	18	25	21	8%	16%
ARCHIVES PLAZA	33	17	32	21	37	28	30	27	27	19	24	22	-10%	17%
13TH STREET	51	68	58	74	76	104	59	96	44	82	53	95	21%	16%
8TH & K	38	35	48	38	55	36	61	20	45	14	41	15	-9%	10%
8TH & H	19	15	22	12	38	16	33	18	39	20	29	18	-25%	-9%
	297	297	352	352	464	464	444	444	373	373	404	403	8%	8%