



# Ridership Report

## Current Month & Fiscal YTD Summary

March 2019					
	Average Daily Boardings			Monthly	YTD
	Weekday	Saturday	Sunday		
Days	21	5	5	31	
<b>Bus</b>	36,183	11,490	7,578	861,648	7,448,584
Full-Size Bus	34,314	11,490	7,578	815,925	
Community Bus	1,075			22,575	
SmaRT Ride	437			9,172	
Folsom Service	358			7,510	
Special Service*				6,465	
<b>Light Rail</b>	39,594	15,082	12,347	972,374	7,994,364
Blue Line	20,280	7,669	6,058	494,515	
Gold Line	18,755	7,413	6,289	462,365	
Green Line	559			11,739	
Special Service*				3,755	
<b>System Total</b>	<b>75,777</b>	<b>26,572</b>	<b>19,925</b>	<b>1,834,022</b>	<b>15,442,948</b>

March 2019				
KPI Comparison - Average Weekday Boardings				
	Actual	KPI Goal	Difference	Percent Difference
Bus Avg Weekday	36,183	32,665	3,518	10.8%
Rail Avg Weekday	39,594	31,889	7,705	24.2%
Monthly Total	1,834,022	1,553,950	280,072	18.0%
Total YTD	15,442,948	14,688,747	754,201	5.1%

March 2018					
	Average Daily Boardings			Monthly	YTD
	Weekday	Saturday	Sunday		
Days	22	5	4	31	
<b>Bus</b>	34,153	12,121	7,494	847,511	7,686,392
Full-Size Bus	33,328	12,121	7,494		
Community Bus	825				
Special Service*				5,556	
<b>Light Rail</b>	34,440	11,800	10,700	872,887	8,072,061
Blue Line	17,500	6,400	5,200		
Gold Line	16,500	5,400	5,500		
Green Line	440				
Golden 1 Service				13,407	
<b>System Total</b>	<b>68,593</b>	<b>23,921</b>	<b>18,194</b>	<b>1,720,398</b>	<b>15,758,453</b>

% Change FY 2019/2018					
	Average Daily Boardings			Monthly	YTD
	Weekday	Saturday	Sunday		
Total Bus	5.9%	-5.2%	1.1%	1.7%	-3.1%
Light Rail	15.0%	27.8%	15.4%	11.4%	-1.0%
System Total	10.5%	11.1%	9.5%	6.6%	-2.0%

## Route Level Ridership Comparison (Fixed Route Bus)

### Weekday Route Comparison

Route	Mar 2019	Mar 2018	Difference	% Change
1	1,844	1,864	(20)	-1%
2	428	395	33	8%
3	201	193	7	4%
5	216	178	37	21%
6	307	323	(15)	-5%
7	121	115	6	5%
11	651	611	40	7%
13	261	312	(51)	-16%
15	1,072	1,046	26	3%
19	597	578	19	3%
21	975	973	2	0%
22	244	236	9	4%
23	1,487	1,482	5	0%
24	151	143	8	5%
25	938	881	56	6%
26	1,020	985	35	4%
28	341	320	21	7%
29	112	121	(9)	-7%
30	1,862	1,736	125	7%
33	251	204	47	23%
34	268	265	3	1%
38	399	362	38	10%
47	113	120	(7)	-6%
51	3,030	3,069	(39)	-1%
54	280	266	15	6%
55	729	629	100	16%
56	983	953	29	3%
61	481	481	0	0%
62	1,048	1,036	11	1%
65	395	364	31	8%
67	1,085	1,126	(41)	-4%
68	1,075	1,094	(19)	-2%
72	1,040	926	114	12%
74	165	186	(22)	-12%
75	151	179	(28)	-16%
80	915	869	45	5%
81	2,530	2,271	259	11%
82	1,614	1,573	41	3%
84	714	700	13	2%
85	-	18		
86	1,054	1,008	46	5%
87	1,149	1,076	73	7%
88	780	725	55	8%
93	762	757	5	1%
95	57	54	3	5%
103	65	72	(7)	-10%
109	100	97	3	3%
170	186	90	96	106%
171	79	80	(1)	-1%
172	147	112	35	31%
175	27	28	(0)	-1%
176	40	29	10	36%
177	117	95	22	23%
205	39	24	14	60%
206	25	20	5	24%
210	41	38	4	10%
211	103	77	25	33%
212	79	44	35	81%
214	39	14	25	182%
227	19	15	4	29%
228	38	14	24	175%
246	49	33	16	50%
248	37	14	22	153%
252	46	27	19	69%
255	55	42	13	31%

### Saturday Route Comparison

Route	Mar 2019	Mar 2018	Difference	% Change
1	683	767	(84)	-11%
11	221	257	(37)	-14%
15	458	481	(23)	-5%
19	251	257	(7)	-3%
21	458	459	(1)	0%
23	1,001	1,048	(47)	-4%
25	358	331	27	8%
26	268	288	(20)	-7%
30	472	491	(19)	-4%
38	160	161	(1)	0%
51	1,371	1,513	(142)	-9%
54	90	114	(24)	-21%
55	223	206	17	8%
56	499	458	41	9%
62	293	304	(11)	-4%
67	293	304	(11)	-4%
68	463	522	(59)	-11%
72	192	216	(24)	-11%
75	65	124	(58)	-47%
80	581	565	16	3%
81	977	1,080	(103)	-10%
82	434	456	(22)	-5%
84	284	324	(40)	-12%
86	309	321	(12)	-4%
87	384	355	29	8%
88	237	244	(6)	-3%
93	267	272	(6)	-2%

### Sunday Route Comparison

Route	Mar 2019	Mar 2018	Difference	% Change
1	545	568	(23)	-4%
15	387	391	(4)	-1%
19	206	216	(10)	-5%
21	321	321	1	0%
23	702	685	18	3%
26	196	176	20	11%
30	257	229	28	12%
38	133	118	15	12%
51	1,010	1,021	(11)	-1%
55	146	139	7	5%
56	298	273	26	9%
67	398	422	(24)	-6%
68	418	449	(30)	-7%
72	147	148	(1)	-1%
75	59	102	(43)	-42%
80	460	447	13	3%
81	584	604	(20)	-3%
82	355	402	(47)	-12%
86	272	221	51	23%
87	248	218	30	14%
88	222	197	25	13%
93	213	217	(4)	-2%

Please note:

Route totals do not add up to monthly totals. Route by Route comparisons are only shown for routes that operated in each year. Additionally special service routes are not included on this page.

## Average Weekday Boardings by Station by Line

Station Name	Mar19	Mar18	Difference	% Change
<b>BLUE LINE - Total</b>	<b>20,280</b>	<b>17,500</b>	<b>2,780</b>	<b>15.89%</b>
12TH & I STATION	492	440	52	11.74%
13TH STREET STATION	512	486	26	5.25%
16TH STREET STATION	1,776	1,511	265	17.57%
47TH AVENUE STATION	621	519	102	19.69%
4TH AVE/WAYNE HULTGREN STATION	695	515	180	35.03%
7TH & CAPITOL STATION	788	679	109	16.09%
8TH & CAPITOL STATION	385	366	19	5.30%
8TH & O STATION	827	718	108	15.11%
ALKALI FLAT/LA VALENTINA STA	729	647	83	12.77%
ARCHIVES PLAZA STATION	570	481	89	18.45%
ARDEN/DEL PASO STATION	824	738	86	11.61%
BROADWAY STATION	736	615	121	19.66%
CATHEDRAL SQUARE STATION	809	731	78	10.71%
CENTER PARKWAY STATION	276	248	28	11.32%
CITY COLLEGE STATION	1,138	858	280	32.63%
CRC STATION	1,433	1,230	203	16.49%
FLORIN STATION	986	840	147	17.48%
FRANKLIN STATION	719	659	60	9.11%
FRUITRIDGE STATION	500	423	77	18.18%
GLOBE AVENUE STATION	294	244	50	20.70%
MARCONI/ARCADE STATION	714	657	57	8.65%
MEADOWVIEW STATION	973	833	140	16.82%
ROSEVILLE ROAD STATION	694	599	95	15.90%
ROYAL OAKS STATION	406	371	35	9.48%
ST ROSE OF LIMA PARK STATION	646	562	84	14.97%
SWANSTON STATION	271	232	39	16.61%
Watt/I-80 Station	1,214	1,101	112	10.21%
WATT/I-80 WEST STATION	161	128	33	26.14%
<b>GOLD LINE - Total</b>	<b>18,755</b>	<b>16,500</b>	<b>2,255</b>	<b>13.67%</b>
13TH STREET STATION	674	606	68	11.21%
16TH STREET STATION	1,794	1,572	222	14.14%
23RD STREET STATION	566	468	98	20.95%
29TH STREET STATION	1,520	1,324	196	14.81%
39TH STREET STATION	283	256	27	10.57%
48TH STREET STATION	244	214	30	14.18%
59TH STREET STATION	285	238	47	19.69%
7TH & CAPITOL STATION	985	870	115	13.22%
7TH & I/COUNTY CENTER STATION	373	331	42	12.76%
8TH & CAPITOL STATION	54	52	2	4.23%
8TH & H STATION	78	72	7	9.18%
8TH & K STATION	81	74	7	9.32%
8TH & O STATION	780	699	81	11.61%
ARCHIVES PLAZA STATION	657	566	92	16.19%
BUTTERFIELD STATION	595	495	100	20.29%
COLLEGE GREENS STATION	685	590	94	16.00%
CORDOVA TOWN CENTER STATION	497	432	65	14.94%
GLENN STATION	276	237	39	16.45%
HAZEL STATION	165	155	10	6.44%

HISTORIC FOLSOM STATION	519	452	67	14.75%
IRON POINT STATION	439	417	22	5.20%
MATHER FIELD/MILLS STATION	1,373	1,228	146	11.89%
POWER INN STATION	520	481	39	8.02%
SACRAMENTO VALLEY STATION	565	469	96	20.54%
STARFIRE STATION	313	276	37	13.46%
SUNRISE STATION	846	754	92	12.24%
TIBER STATION	298	265	33	12.53%
UNIVERSITY/65TH STREET STATION	1,422	1,274	148	11.63%
WATT/MANLOVE STATION	1,077	920	157	17.05%
ZINFANDEL STATION	769	703	67	9.48%
<b>GREEN LINE - Total</b>	<b>559</b>	<b>440</b>	<b>119</b>	<b>27.05%</b>
13TH STREET STATION	132	102	31	30.12%
7TH & CAPITOL STATION	32	28	4	15.01%
7TH & I/COUNTY CENTER STATION	24	27	(3)	-11.58%
8TH & CAPITOL STATION	24	20	4	22.23%
8TH & K STATION	96	54	43	79.24%
8TH & O STATION	24	25	(0)	-0.36%
ARCHIVES PLAZA STATION	36	28	8	28.28%
TOWNSHIP 9 STATION	189	157	32	20.68%
<b>All Stations</b>	<b>39,594</b>	<b>34,440</b>	<b>5,154</b>	<b>14.97%</b>

## Average Weekday Alightings by Station by Line

Station Name	Mar19	Mar18	Difference	% Change
<b>BLUE LINE - Rt#533</b>	<b>20,270</b>	<b>16,932</b>	<b>3,339</b>	<b>19.72%</b>
12TH & I STATION	521	453	68	15.03%
13TH STREET STATION	559	493	66	13.30%
16TH STREET STATION	1,814	1,508	306	20.28%
47TH AVENUE STATION	635	519	117	22.51%
4TH AVE/WAYNE HULTGREN STATION	603	407	195	47.98%
7TH & CAPITOL STATION	709	582	126	21.68%
8TH & CAPITOL STATION	524	446	78	17.43%
8TH & O STATION	755	639	116	18.13%
ALKALI FLAT/LA VALENTINA STATION	704	628	76	12.13%
ARCHIVES PLAZA STATION	516	432	83	19.29%
ARDEN/DEL PASO STATION	870	753	117	15.60%
BROADWAY STATION	769	619	150	24.29%
CATHEDRAL SQUARE STATION	863	747	116	15.49%
CENTER PARKWAY STATION	252	194	57	29.44%
CITY COLLEGE STATION	1,206	766	440	57.48%
CRC STATION	1,503	1,258	245	19.49%
FLORIN STATION	1,015	822	192	23.40%
FRANKLIN STATION	706	616	91	14.70%
FRUITRIDGE STATION	533	408	125	30.57%
GLOBE AVENUE STATION	295	247	48	19.23%
MARCONI/ARCADE STATION	671	615	56	9.05%
MEADOWVIEW STATION	979	803	176	21.90%
ROSEVILLE ROAD STATION	635	594	40	6.77%
ROYAL OAKS STATION	386	364	23	6.18%
ST ROSE OF LIMA PARK STATION	525	462	63	13.57%
SWANSTON STATION	263	232	30	13.09%
Watt/I-80 Station	1,237	1,130	107	9.47%
WATT/I-80 WEST STATION	144	127	18	13.98%
<b>GOLD LINE - Rt#507</b>	<b>18,762</b>	<b>16,997</b>	<b>1,765</b>	<b>10.38%</b>
13TH STREET STATION	537	517	20	3.96%
16TH STREET STATION	1,864	1,634	229	14.03%
23RD STREET STATION	532	472	60	12.71%
29TH STREET STATION	1,467	1,338	128	9.59%
39TH STREET STATION	285	258	27	10.63%
48TH STREET STATION	249	238	12	5.03%
59TH STREET STATION	308	261	47	18.10%
7TH & CAPITOL STATION	59	56	2	4.29%
7TH & I/COUNTY CENTER STATION	22	25	(3)	-13.47%
8TH & CAPITOL STATION	690	653	37	5.67%
8TH & H STATION	364	331	33	10.02%
8TH & K STATION	729	646	83	12.85%
8TH & O STATION	714	629	85	13.43%
ARCHIVES PLAZA STATION	652	594	58	9.80%
BUTTERFIELD STATION	565	495	70	14.11%
COLLEGE GREENS STATION	648	585	63	10.78%
CORDOVA TOWN CENTER STATION	470	416	54	12.91%
GLENN STATION	267	232	35	15.18%

HAZEL STATION	163	154	9	5.84%
HISTORIC FOLSOM STATION	504	461	43	9.32%
IRON POINT STATION	425	415	10	2.35%
MATHER FIELD/MILLS STATION	1,319	1,207	112	9.26%
POWER INN STATION	518	488	30	6.20%
SACRAMENTO VALLEY STATION	468	417	51	12.36%
SACRAMENTO VALLEY STATION	199	229	(30)	-13.16%
STARFIRE STATION	288	251	37	14.79%
SUNRISE STATION	835	750	85	11.37%
TIBER STATION	289	262	27	10.32%
UNIVERSITY/65TH STREET STATION	1,500	1,310	190	14.50%
WATT/MANLOVE STATION	1,032	938	94	10.02%
ZINFANDEL STATION	798	734	64	8.67%
<b>GREEN LINE - Rt#519</b>	<b>561</b>	<b>511</b>	<b>50</b>	<b>9.88%</b>
13TH STREET STATION	164	164	(0)	-0.12%
7TH & CAPITOL STATION	46	41	5	11.17%
7TH & I/COUNTY CENTER STATIO	62	57	6	9.89%
8TH & CAPITOL STATION	10	10	(0)	-2.01%
8TH & K STATION	48	30	18	57.96%
8TH & O STATION	29	25	4	14.57%
ARCHIVES PLAZA STATION	30	26	4	14.18%
TOWNSHIP 9 STATION	172	156	16	10.06%
<b>All Stations</b>	<b>39,594</b>	<b>34,440</b>	<b>5,154</b>	<b>14.97%</b>

## Average Saturday Boardings by Station by Line

Station Name	Mar19	Mar18	Difference	% Change
<b>BLUE LINE - Rt#533</b>	<b>7,669</b>	<b>6,400</b>	<b>1,269</b>	<b>19.83%</b>
12TH & I STATION	188	130	58	44.87%
13TH STREET STATION	196	163	33	20.50%
16TH STREET STATION	730	584	146	24.98%
47TH AVENUE STATION	177	159	18	11.50%
4TH AVE/WAYNE HULTGREN STATION	147	116	31	26.43%
7TH & CAPITOL STATION	357	277	80	29.02%
8TH & CAPITOL STATION	102	70	32	45.51%
8TH & O STATION	124	90	34	37.41%
ALKALI FLAT/LA VALENTINA STATION	362	315	47	14.94%
ARCHIVES PLAZA STATION	81	64	17	25.69%
ARDEN/DEL PASO STATION	430	382	49	12.70%
BROADWAY STATION	352	298	54	18.22%
CATHEDRAL SQUARE STATION	341	280	61	21.84%
CENTER PARKWAY STATION	120	111	9	7.77%
CITY COLLEGE STATION	211	181	29	16.28%
CRC STATION	486	433	53	12.20%
FLORIN STATION	401	351	50	14.16%
FRANKLIN STATION	205	160	45	27.97%
FRUITRIDGE STATION	217	180	37	20.40%
GLOBE AVENUE STATION	147	100	47	46.35%
MARCONI/ARCADE STATION	323	298	25	8.29%
MEADOWVIEW STATION	391	331	60	18.07%
ROSEVILLE ROAD STATION	113	88	25	27.94%
ROYAL OAKS STATION	241	223	18	8.18%
ST ROSE OF LIMA PARK STATION	373	298	74	24.95%
SWANSTON STATION	134	97	37	38.27%
Watt/I-80 Station	634	559	74	13.31%
WATT/I-80 WEST STATION	26	19	7	35.96%
<b>GOLD LINE - Rt#507</b>	<b>7,413</b>	<b>5,400</b>	<b>2,013</b>	<b>37.28%</b>
13TH STREET STATION	213	158	55	34.86%
16TH STREET STATION	704	517	187	36.15%
23RD STREET STATION	186	130	56	43.32%
29TH STREET STATION	534	393	141	35.79%
39TH STREET STATION	114	85	28	33.15%
48TH STREET STATION	124	72	52	71.33%
59TH STREET STATION	107	80	27	34.22%
7TH & CAPITOL STATION	455	258	197	76.38%
7TH & I/COUNTY CENTER STATION	110	81	29	35.61%
8TH & CAPITOL STATION	25	22	3	13.79%
8TH & H STATION	21	22	(1)	-2.41%
8TH & K STATION	67	43	24	55.63%
8TH & O STATION	99	87	12	14.14%
ARCHIVES PLAZA STATION	153	70	83	118.70%
BUTTERFIELD STATION	170	109	62	56.71%
COLLEGE GREENS STATION	384	315	69	21.84%
CORDOVA TOWN CENTER STATION	213	158	55	35.06%
GLENN STATION	48	44	4	8.60%

HAZEL STATION	68	53	16	30.38%
HISTORIC FOLSOM STATION	260	188	71	37.94%
IRON POINT STATION	195	148	47	31.44%
MATHER FIELD/MILLS STATION	581	474	108	22.72%
POWER INN STATION	188	145	43	29.79%
SACRAMENTO VALLEY STATION	326	222	105	47.24%
ST ROSE OF LIMA PARK STATION	7	3	4	105.03%
STARFIRE STATION	162	126	35	27.98%
SUNRISE STATION	365	255	110	43.18%
TIBER STATION	124	101	23	22.61%
UNIVERSITY/65TH STREET STATION	503	385	118	30.71%
WATT/MANLOVE STATION	375	273	102	37.28%
ZINFANDEL STATION	533	384	149	38.72%
<b>Final Total - Boardings</b>	<b>15,082</b>	<b>11,800</b>	<b>3,282</b>	<b>27.81%</b>

### Average Saturday Alightings by Station by Line

Station Name	Mar19	Mar18	Difference	% Change
<b>BLUE LINE - Rt#533</b>	<b>7,695</b>	<b>5,922</b>	<b>1,773</b>	<b>29.94%</b>
12TH & I STATION	148	115	33	28.61%
13TH STREET STATION	205	155	51	32.73%
16TH STREET STATION	696	583	113	19.47%
47TH AVENUE STATION	194	149	46	30.70%
4TH AVE/WAYNE HULTGREN STATION	129	104	24	23.29%
7TH & CAPITOL STATION	260	189	71	37.40%
8TH & CAPITOL STATION	155	97	58	60.41%
8TH & O STATION	107	79	27	34.66%
ALKALI FLAT/LA VALENTINA STATION	371	291	81	27.77%
ARCHIVES PLAZA STATION	46	47	(1)	-3.14%
ARDEN/DEL PASO STATION	455	360	95	26.23%
BROADWAY STATION	372	297	75	25.27%
CATHEDRAL SQUARE STATION	364	286	78	27.30%
CENTER PARKWAY STATION	110	92	19	20.37%
CITY COLLEGE STATION	221	150	71	46.93%
CRC STATION	531	421	110	26.20%
FLORIN STATION	435	338	96	28.45%
FRANKLIN STATION	158	124	34	27.30%
FRUITRIDGE STATION	222	155	67	42.96%
GLOBE AVENUE STATION	156	98	59	59.96%
MARCONI/ARCADE STATION	294	270	24	8.82%
MEADOWVIEW STATION	426	304	122	40.28%
ROSEVILLE ROAD STATION	117	90	27	30.54%
ROYAL OAKS STATION	303	229	74	32.45%
ST ROSE OF LIMA PARK STATION	344	215	128	59.57%
SWANSTON STATION	109	79	30	37.53%
Watt/I-80 Station	692	555	137	24.66%
WATT/I-80 WEST STATION	23	14	9	66.59%
<b>GOLD LINE - Rt#507</b>	<b>7,387</b>	<b>5,878</b>	<b>1,509</b>	<b>25.67%</b>
13TH STREET STATION	161	155	6	4.20%
16TH STREET STATION	707	601	106	17.65%



23RD STREET STATION	166	143	23	16.32%
29TH STREET STATION	469	387	83	21.36%
39TH STREET STATION	95	79	16	20.02%
48TH STREET STATION	110	82	28	33.74%
59TH STREET STATION	77	74	3	4.60%
7TH & CAPITOL STATION	27	23	4	17.86%
7TH & I/COUNTY CENTER STATION	25	15	10	62.71%
8TH & CAPITOL STATION	219	139	80	57.64%
8TH & H STATION	76	65	11	17.03%
8TH & K STATION	407	311	96	30.91%
8TH & O STATION	122	77	44	57.09%
ARCHIVES PLAZA STATION	149	78	71	91.54%
BUTTERFIELD STATION	144	116	28	23.65%
COLLEGE GREENS STATION	395	332	64	19.20%
CORDOVA TOWN CENTER STATION	215	174	40	22.97%
GLENN STATION	46	39	6	16.32%
HAZEL STATION	61	54	7	13.53%
HISTORIC FOLSOM STATION	274	221	53	23.83%
IRON POINT STATION	202	164	38	23.10%
MATHER FIELD/MILLS STATION	678	528	150	28.38%
POWER INN STATION	178	136	42	31.07%
SACRAMENTO VALLEY STATIO	327	242	85	35.23%
SACRAMENTO VALLEY STATION	4	3	1	41.26%
ST ROSE OF LIMA PARK STATION	2	0	1	347.31%
STARFIRE STATION	177	135	41	30.49%
SUNRISE STATION	392	287	105	36.50%
TIBER STATION	104	100	4	4.28%
UNIVERSITY/65TH STREET STATION	534	414	120	28.91%
WATT/MANLOVE STATION	344	278	66	23.72%
ZINFANDEL STATION	502	426	76	17.82%
<b>Final Total - Alightings</b>	<b>15,082</b>	<b>11,800</b>	<b>3,282</b>	<b>27.81%</b>

## Average Sunday Boardings by Station by Line

Station Name	Mar19	Mar18	Difference	% Change
<b>BLUE LINE - Rt#533</b>	<b>6,058</b>	<b>5,200</b>	<b>858</b>	<b>16.50%</b>
12TH & I STATION	134	113	22	19.29%
13TH STREET STATION	153	132	21	15.95%
16TH STREET STATION	517	475	42	8.82%
47TH AVENUE STATION	198	139	58	41.97%
4TH AVE/WAYNE HULTGREN STATION	115	90	25	28.00%
7TH & CAPITOL STATION	279	222	56	25.40%
8TH & CAPITOL STATION	56	57	(1)	-1.78%
8TH & O STATION	100	78	22	27.55%
ALKALI FLAT/LA VALENTINA STATION	306	262	44	16.64%
ARCHIVES PLAZA STATION	40	46	(6)	-13.62%
ARDEN/DEL PASO STATION	370	307	64	20.75%
BROADWAY STATION	259	243	16	6.52%
CATHEDRAL SQUARE STATION	290	244	46	18.64%
CENTER PARKWAY STATION	92	89	3	3.26%
CITY COLLEGE STATION	121	123	(2)	-1.44%
CRC STATION	391	331	61	18.37%
FLORIN STATION	348	305	42	13.91%
FRANKLIN STATION	172	150	22	14.73%
FRUITRIDGE STATION	168	148	19	13.08%
GLOBE AVENUE STATION	111	93	17	18.57%
MARCONI/ARCADE STATION	237	196	41	21.05%
MEADOWVIEW STATION	316	266	50	18.79%
ROSEVILLE ROAD STATION	99	82	16	19.60%
ROYAL OAKS STATION	241	199	42	21.19%
ST ROSE OF LIMA PARK STATION	274	246	28	11.40%
SWANSTON STATION	103	71	32	45.66%
Watt/I-80 Station	508	440	68	15.43%
WATT/I-80 WEST STATION	18	15	3	17.70%
<b>GOLD LINE - Rt#507</b>	<b>6,289</b>	<b>5,500</b>	<b>789</b>	<b>14.35%</b>
13TH STREET STATION	160	174	(14)	-7.77%
16TH STREET STATION	599	514	85	16.53%
23RD STREET STATION	149	124	25	20.10%
29TH STREET STATION	441	384	56	14.66%
39TH STREET STATION	99	86	13	15.48%
48TH STREET STATION	80	68	12	18.24%
59TH STREET STATION	83	73	10	14.04%
7TH & CAPITOL STATION	318	261	57	21.89%
7TH & I/COUNTY CENTER STATION	106	89	18	20.03%
8TH & CAPITOL STATION	26	22	4	16.96%
8TH & H STATION	26	26	(0)	-0.84%
8TH & K STATION	44	41	3	7.34%
8TH & O STATION	123	92	31	33.05%
ARCHIVES PLAZA STATION	64	66	(2)	-3.63%
BUTTERFIELD STATION	129	115	15	12.81%
COLLEGE GREENS STATION	413	322	91	28.18%
CORDOVA TOWN CENTER STATION	168	167	1	0.47%
GLENN STATION	34	38	(4)	-9.74%

HAZEL STATION	52	53	(1)	-1.06%
HISTORIC FOLSOM STATION	220	182	38	21.02%
IRON POINT STATION	174	144	30	20.58%
MATHER FIELD/MILLS STATION	512	489	24	4.82%
POWER INN STATION	161	136	25	18.42%
SACRAMENTO VALLEY STATION	299	247	52	20.90%
STARFIRE STATION	162	136	27	19.59%
SUNRISE STATION	303	273	30	10.84%
TIBER STATION	112	99	13	13.22%
UNIVERSITY/65TH STREET STATION	473	409	64	15.64%
WATT/MANLOVE STATION	303	269	34	12.82%
ZINFANDEL STATION	450	399	51	12.91%
<b>Final Total - Boardings</b>	<b>12,347</b>	<b>10,700</b>	<b>1,647</b>	<b>15.39%</b>

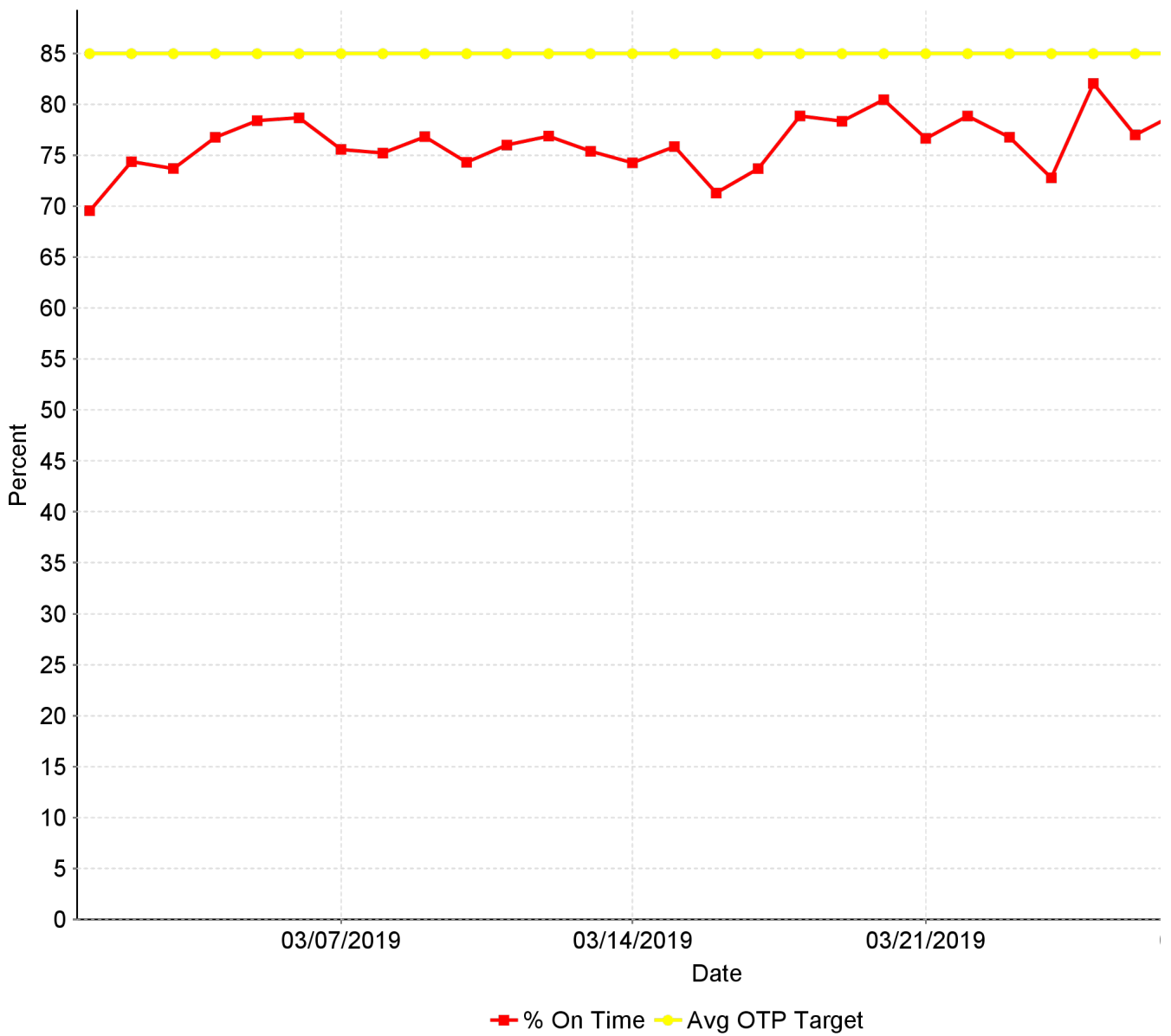
### Average Sunday Alightings by Station by Line

Station Name	Mar19	Mar18	Difference	% Change
<b>BLUE LINE - Rt#533</b>	<b>6,133</b>	<b>5,361</b>	<b>772</b>	<b>14.41%</b>
12TH & I STATION	116	104	12	11.56%
13TH STREET STATION	147	145	2	1.43%
16TH STREET STATION	622	540	82	15.27%
47TH AVENUE STATION	154	144	11	7.47%
4TH AVE/WAYNE HULTGREN STATION	107	88	19	21.34%
7TH & CAPITOL STATION	209	177	32	18.21%
8TH & CAPITOL STATION	108	91	17	18.69%
8TH & O STATION	97	72	25	34.17%
ALKALI FLAT/LA VALENTINA STATION	342	284	58	20.52%
ARCHIVES PLAZA STATION	51	44	7	15.23%
ARDEN/DEL PASO STATION	354	311	42	13.63%
BROADWAY STATION	316	270	46	16.88%
CATHEDRAL SQUARE STATION	282	250	31	12.43%
CENTER PARKWAY STATION	89	81	8	10.02%
CITY COLLEGE STATION	129	128	1	0.96%
CRC STATION	403	356	47	13.29%
EMPLOYEE PLATFORM STATION	35	32	3	10.49%
FLORIN STATION	345	327	19	5.68%
FRANKLIN STATION	149	129	20	15.42%
FRUITRIDGE STATION	158	151	7	4.81%
GLOBE AVENUE STATION	103	85	18	21.37%
MARCONI/ARCADE STATION	235	203	32	15.58%
MEADOWVIEW STATION	291	272	19	6.99%
ROSEVILLE ROAD STATION	90	82	9	10.53%
ROYAL OAKS STATION	258	222	36	16.00%
ST ROSE OF LIMA PARK STATION	261	189	73	38.52%
SWANSTON STATION	111	76	35	45.54%
Watt/I-80 Station	560	498	61	12.31%
WATT/I-80 WEST STATION	11	10	1	8.95%
<b>GOLD LINE - Rt#507</b>	<b>6,214</b>	<b>5,339</b>	<b>875</b>	<b>16.38%</b>
13TH STREET STATION	147	141	6	4.40%
16TH STREET STATION	607	525	82	15.64%

23RD STREET STATION	163	129	34	26.07%
29TH STREET STATION	417	353	65	18.41%
39TH STREET STATION	94	90	4	4.53%
48TH STREET STATION	86	71	15	21.75%
59TH STREET STATION	83	69	15	21.60%
7TH & CAPITOL STATION	27	25	2	8.69%
7TH & I/COUNTY CENTER STATION	15	14	1	10.18%
8TH & CAPITOL STATION	116	127	(11)	-8.72%
8TH & H STATION	62	56	6	10.41%
8TH & K STATION	388	288	100	34.76%
8TH & O STATION	82	77	4	5.46%
ARCHIVES PLAZA STATION	90	71	19	26.73%
BUTTERFIELD STATION	117	108	9	8.40%
COLLEGE GREENS STATION	395	308	87	28.20%
CORDOVA TOWN CENTER STATION	149	150	(2)	-1.17%
GLENN STATION	30	30	1	2.57%
HAZEL STATION	63	50	13	26.03%
HISTORIC FOLSOM STATION	224	181	43	23.81%
IRON POINT STATION	144	138	6	4.57%
MATHER FIELD/MILLS STATION	512	454	58	12.67%
POWER INN STATION	153	133	19	14.62%
SACRAMENTO VALLEY STATIO	272	222	50	22.60%
SACRAMENTO VALLEY STATION	-	1	(1)	-100.00%
ST ROSE OF LIMA PARK STATION	1	1	0	35.70%
STARFIRE STATION	141	118	22	18.99%
SUNRISE STATION	342	296	46	15.57%
TIBER STATION	110	83	27	31.93%
UNIVERSITY/65TH STREET STATION	453	377	76	20.05%
WATT/MANLOVE STATION	285	256	29	11.13%
ZINFANDEL STATION	447	398	49	12.39%
<b>Final Total - Alightings</b>	<b>12,347</b>	<b>10,700</b>	<b>1,647</b>	<b>15.39%</b>

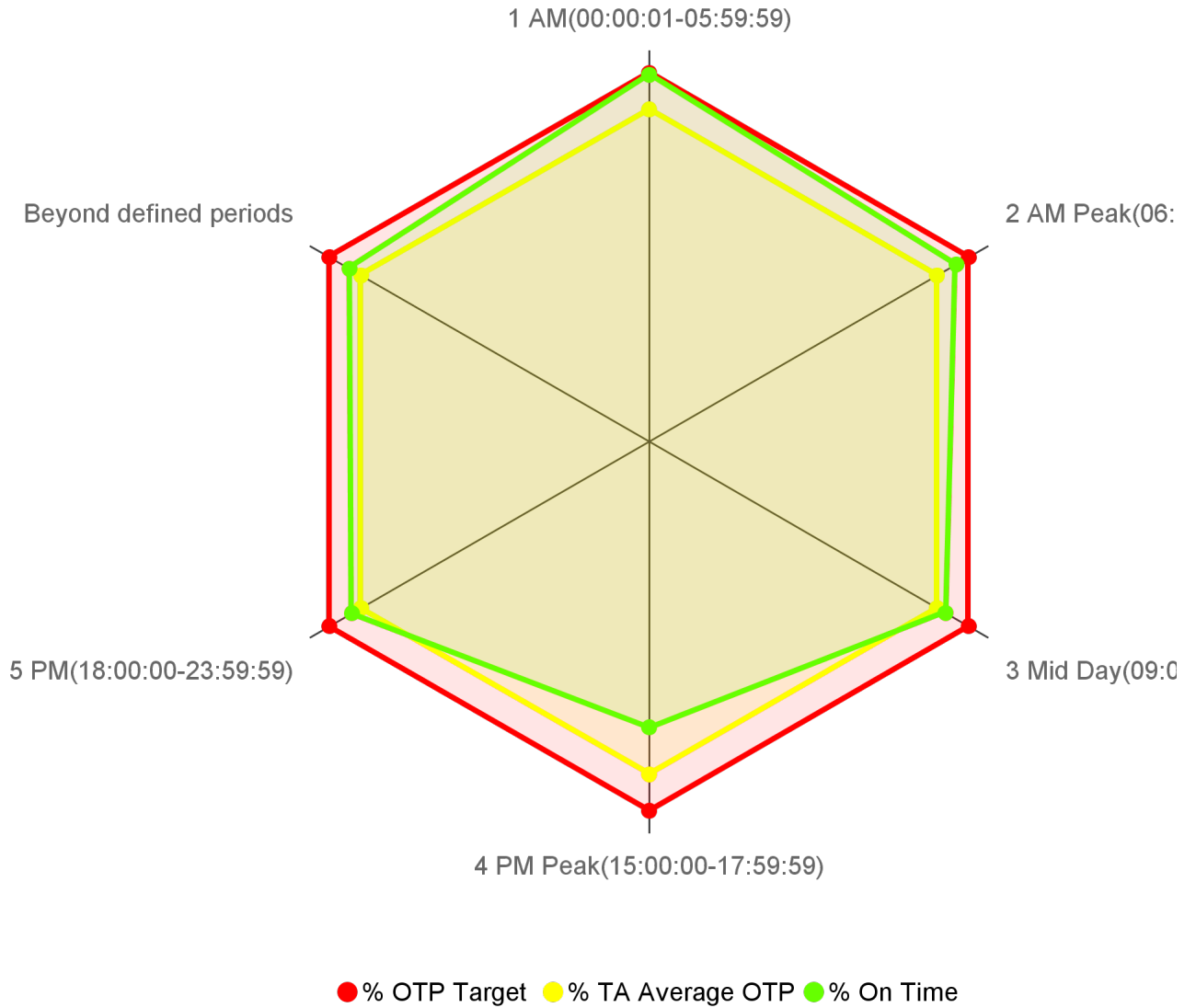
## CR-0105 On Time Performance KPI Trend

On Time Performance



## CR-0104 On Time Performance by Operational Period

On Time Performance by Operational Period

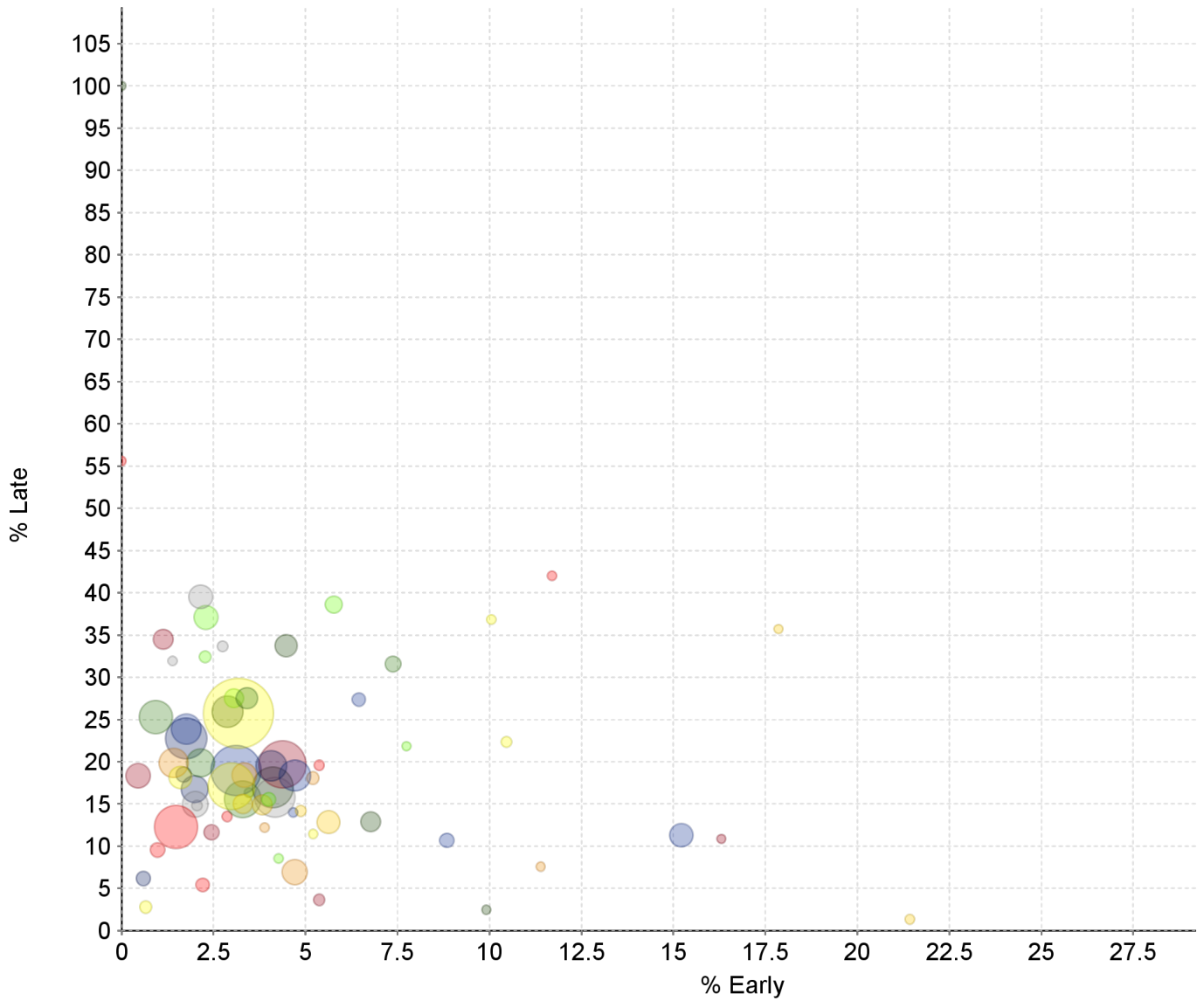


Transit Domain: Bus

Operational Period	% On Time	% TA Average OTP	% OTP Target	# On Time	# Processed
1 AM(00:00:01-05:59:59)	84.59	76.59	85.00	3,029	3,581
2 AM Peak(06:00:00-08:59:59)	81.75	76.59	85.00	47,259	57,808
3 Mid Day(09:00:00-14:59:59)	78.87	76.59	85.00	88,159	111,779
4 PM Peak(15:00:00-17:59:59)	65.82	76.59	85.00	43,189	65,617
5 PM(18:00:00-23:59:59)	79.06	76.59	85.00	39,046	49,388
Beyond defined periods	79.72	76.59	85.00	621	779

### CR-0106 On Time Performance Graph

Shows all Routes together on one chart for easy visual indication of outliers.



Route	% Early	% Late	Timepoints Processed
001 - Greenback	1.48	12.29	12,201
002 - Riverside	1.60	18.14	4,874
003 - Riverside Express	2.27	32.43	925
005 - Meadowview - Valley Hi via Massi	8.84	10.70	1,934
006 - Land Park	3.41	27.53	4,461
007 - Pocket Express	4.87	14.18	677
011 - Truxel Road	2.15	39.53	5,394
013 - Northgate	2.44	11.64	2,294
015 - Rio Linda Blvd - O St	4.07	19.50	7,737
019 - Rio Linda	4.47	33.75	4,764
021 - Sunrise - Citrus Heights	1.42	19.83	7,270
022 - Arden	5.37	19.58	521
023 - El Camino	2.99	17.10	13,463
024 - Madison - Greenback	4.00	15.55	1,801
025 - Marconi	4.71	18.37	8,040
026 - Fulton	0.93	25.29	8,706

Route	% Early	% Late	Timepoints Processed
028 - Fair Oaks - Folsom Blvd	3.30	15.03	3,732
029 - Arden - California Ave	2.75	33.67	692
030 - J Street (DASH)	4.38	19.68	13,663
033 - Dos Rios	1.69	18.48	2,310
034 - McKinley	6.77	12.90	3,854
038 - P/Q Streets	3.34	18.44	5,597
047 - Phoenix Park	0.98	9.55	1,937
051 - Broadway - Stockton	3.18	25.75	21,798
054 - Center Parkway	3.06	27.53	3,600
055 - Scottsdale	1.76	23.86	7,493
056 - Pocket - C.R.C.	2.15	19.84	6,889
061 - Fruitridge	3.83	14.89	3,921
062 - Freeport	4.17	15.79	11,109
065 - Delta Shores - Franklin - 65th S	1.14	34.51	3,964
067 - Franklin	1.76	22.78	11,503
068 - 44th Street	4.12	16.96	11,492
072 - Rosemont - Lincoln Village	4.71	6.93	5,817
074 - International	2.21	5.43	1,677
075 - Mather Field	0.66	2.79	1,218
080 - Watt - Elkhorn	2.29	37.09	5,274
081 - Florin - 65th Street	3.11	18.97	14,832
082 - Howe - 65th Street	3.29	15.57	9,955
084 - Watt - North Highlands	5.63	12.86	4,994
086 - San Juan - Silver Eagle	2.01	14.94	5,983
087 - Howe	0.45	18.33	5,554
088 - West El Camino	1.99	16.74	6,494
093 - Hillsdale	2.88	25.91	8,051
095 - Citrus Heights-Antelope Rd	5.20	18.08	1,289
103 - Auburn Blvd	2.87	13.52	488
109 - Hazel Express	10.46	22.35	631
170 - JIBE EASTSIDE	5.77	38.60	2,982
171 - JIBE WESTSIDE	6.45	27.36	1,535
172 - JIBE CENTRAL	7.38	31.56	2,506
174 - JIBE MIDWEST	17.86	35.71	56
175 - RANCHO CORDOVAN - SUNRIDGE PARK	2.05	14.81	682
176 - RANCHO CORDOVAN - ANATOLIA	5.37	3.66	875
177 - RANCHO CORDOVAN - VILLAGES	0.59	6.18	2,024
195 - Citrus Heights Dial A Ride	0.00	100.00	1
205 - Fruitridge Road - Freeport	3.89	12.22	180
206 - 12th Ave - Sutterville Road	11.70	42.02	188
210 - La Riveria Drive	5.21	11.46	96



Route	% Early	% Late	Timepoints Processed
211 - College Greens	7.75	21.83	142
212 - 14th Ave - 21st Ave	4.67	14.02	214
213 - Fruitridge Road - Stockton Blvd	3.47	16.34	202
214 - Broadway - Stockton Blvd	21.43	1.34	224
226 - Pocket Riverside Blvd	1.39	31.94	72
227 - South Land Park - Greenhaven Dri	16.30	10.87	92
228 - Gloria Drive - Rush River Drive	31.19	7.34	109
246 - Meadowview - Greenhaven	9.92	2.48	121
247 - 21st Street - Florin Road	11.39	7.59	79
248 - Meadowview - Rush River	0.00	55.61	187
252 - Freeport - Fruitridge - ML King	10.05	36.84	209
255 - La Riveria - College Greens	4.27	8.55	117
051X - W/X	15.21	11.28	5,186

### CR-0103 Overall On Time

Overall On Time Timepoints

On Time	Early	Late	Timepoints Processed
76.59%	3.38%	20.03%	288,952