



Ridership Report

Current Month & Fiscal YTD Summary

June 2019					
	Average Daily Boardings			Monthly	YTD
	Weekday	Saturday	Sunday		
Days	20	5	5	30	
Bus	31,038	12,065	7,314	758,326	9,965,494
Full-Size Bus	29,304	12,065	7,314	682,973	
Community Bus	1,091			21,815	
SmaRT Ride	369			7,378	
Folsom Service	275			5,497	
Special Service*				40,662	
Light Rail	37,530	15,905	12,584	893,853	10,871,941
Blue Line	18,642	8,182	6,380	445,650	
Gold Line	18,329	7,723	6,204	436,215	
Green Line	559			11,180	
Special Service*				808	
System Total	68,568	27,970	19,898	1,652,179	20,837,435

June 2019				
KPI Comparison - Average Weekday Boardings				
	Actual	KPI Goal	Difference	Percent Difference
Bus Avg Weekday	31,038	27,624	3,414	12.4%
Rail Avg Weekday	37,530	33,451	4,079	12.2%
Monthly Total	1,652,179	1,416,059	236,120	16.7%
Total YTD	20,837,435	19,545,451	1,291,984	6.6%

June 2018					
	Average Daily Boardings			Monthly	YTD
	Weekday	Saturday	Sunday		
Days	21	5	4	30	
Bus	30,661	11,553	7,144	731,095	10,121,191
Full-Size Bus	29,866	11,553	7,144		
Community Bus	795				
Special Service*				871	
Light Rail	34,360	11,900	9,800	820,892	10,679,935
Blue Line	16,700	6,000	4,700		
Gold Line	17,200	5,900	5,100		
Green Line	460				
Golden 1 Service				632	
System Total	65,021	23,453	16,944	1,551,987	20,801,126

% Change FY 2019/2018					
	Average Daily Boardings			Monthly	YTD
	Weekday	Saturday	Sunday		
Total Bus	1.2%	4.4%	2.4%	3.7%	-1.5%
Light Rail	9.2%	33.7%	28.4%	8.9%	1.8%
System Total	5.5%	19.3%	17.4%	6.5%	0.2%

Route Level Ridership Comparison (Fixed Route Bus)

Weekday Route Comparison

Route	Jun 2019	Jun 2018	Difference	% Change
1	1,378	1,482	(104)	-7%
2	317	360	(43)	-12%
3	196	185	11	6%
5	134	144	(9)	-6%
6	293	317	(24)	-8%
7	118	120	(2)	-2%
11	535	556	(20)	-4%
13	243	293	(50)	-17%
15	1,021	1,058	(38)	-4%
19	541	543	(2)	0%
21	880	969	(88)	-9%
22	242	260	(18)	-7%
23	1,407	1,443	(36)	-2%
24	132	119	13	11%
25	938	904	35	4%
26	931	926	5	1%
28	267	278	(12)	-4%
29	98	109	(11)	-10%
30	1,667	1,575	92	6%
33	244	223	21	10%
34	214	221	(6)	-3%
38	375	393	(18)	-4%
47	114	123	(8)	-7%
51	2,737	2,955	(218)	-7%
54	204	219	(15)	-7%
55	562	569	(7)	-1%
56	874	949	(76)	-8%
61	430	487	(57)	-12%
62	770	882	(111)	-13%
65	352	353	(1)	0%
67	1,018	1,117	(99)	-9%
68	1,011	1,106	(95)	-9%
72	739	791	(52)	-7%
74	162	180	(18)	-10%
75	143	189	(46)	-24%
80	790	828	(38)	-5%
81	1,983	2,143	(160)	-7%
82	1,207	1,229	(23)	-2%
84	645	623	23	4%
85	-	19		
86	1,005	964	41	4%
87	862	822	40	5%
88	730	702	28	4%
93	726	698	28	4%
95	48	43	6	14%
103	67	69	(2)	-3%
109	105	97	8	8%
170	201	53	148	279%
171	68	71	(3)	-5%
172	164	85	79	92%
175	28	25	3	14%
176	31	27	4	13%
177	126	80	46	57%
205	11	-	11	#DIV/0!
206	14	-	14	#DIV/0!
210	19	-	19	#DIV/0!
211	39	-	39	#DIV/0!
212	38	-	38	#DIV/0!
214	12	-	12	#DIV/0!
227	7	-	7	#DIV/0!
228	17	-	17	#DIV/0!
246	18	-	18	#DIV/0!
248	10	-	10	#DIV/0!
252	8	-	8	#DIV/0!
255	21	-	21	#DIV/0!

Saturday Route Comparison

Route	Jun 2019	Jun 2018	Difference	% Change
1	650	677	(28)	-4%
11	241	250	(9)	-4%
15	517	502	15	3%
19	270	218	51	23%
21	466	475	(10)	-2%
23	1,064	1,025	39	4%
25	367	323	44	14%
26	258	239	19	8%
30	464	486	(23)	-5%
38	173	159	14	9%
51	1,530	1,482	48	3%
54	70	96	(26)	-27%
55	233	209	23	11%
56	479	434	45	10%
62	289	286	3	1%
67	289	286	3	1%
68	538	585	(47)	-8%
72	217	220	(3)	-1%
75	104	107	(3)	-3%
80	592	564	28	5%
81	986	1,079	(94)	-9%
82	412	418	(6)	-1%
84	326	305	22	7%
86	366	316	49	16%
87	344	287	57	20%
88	246	228	18	8%
93	275	251	24	9%

Sunday Route Comparison

Route	Jun 2019	Jun 2018	Difference	% Change
1	470	560	(90)	-16%
15	397	397	0	0%
19	212	199	13	7%
21	297	345	(49)	-14%
23	706	658	48	7%
26	190	172	19	11%
30	242	255	(13)	-5%
38	127	129	(2)	-1%
51	1,002	981	21	2%
55	155	125	30	24%
56	258	270	(12)	-4%
67	388	407	(19)	-5%
68	406	441	(34)	-8%
72	142	155	(13)	-9%
75	78	116	(38)	-33%
80	453	428	25	6%
81	596	580	16	3%
82	324	337	(12)	-4%
86	260	199	61	31%
87	210	158	51	32%
88	206	181	26	14%
93	196	197	(2)	-1%

Please note:

Route totals do not add up to monthly totals. Route by Route comparisons are only shown for routes that operated in each year. Additionally special service routes are not included on this page.

Average Weekday Boardings by Station by Line

Station Name	Jun19	Jun18	Difference	% Change
BLUE LINE - Total	18,642	16,700	1,942	11.63%
12TH & I STATION	495	420	75	17.87%
13TH STREET STATION	623	464	159	34.31%
16TH STREET STATION	1,613	1,442	171	11.88%
47TH AVENUE STATION	538	495	43	8.62%
4TH AVE/WAYNE HULTGREN STATION	444	491	(48)	-9.72%
7TH & CAPITOL STATION	730	648	82	12.73%
8TH & CAPITOL STATION	391	349	42	11.92%
8TH & O STATION	812	685	127	18.51%
ALKALI FLAT/LA VALENTINA STA	696	617	79	12.79%
ARCHIVES PLAZA STATION	568	459	108	23.60%
ARDEN/DEL PASO STATION	807	705	103	14.60%
BROADWAY STATION	639	587	52	8.87%
CATHEDRAL SQUARE STATION	840	698	142	20.35%
CENTER PARKWAY STATION	227	237	(10)	-4.09%
CITY COLLEGE STATION	585	819	(234)	-28.54%
CRC STATION	1,191	1,174	17	1.46%
FLORIN STATION	878	801	77	9.60%
FRANKLIN STATION	764	629	135	21.53%
FRUITRIDGE STATION	420	403	16	4.00%
GLOBE AVENUE STATION	274	233	42	17.84%
MARCONI/ARCADE STATION	729	627	102	16.30%
MEADOWVIEW STATION	903	795	108	13.62%
ROSEVILLE ROAD STATION	678	571	107	18.69%
ROYAL OAKS STATION	463	354	109	30.82%
ST ROSE OF LIMA PARK STATION	628	536	92	17.10%
SWANSTON STATION	259	222	38	16.97%
Watt/I-80 Station	1,216	1,051	165	15.75%
WATT/I-80 WEST STATION	146	122	24	19.67%
GOLD LINE - Total	18,329	17,200	1,129	6.56%
13TH STREET STATION	721	632	89	14.16%
16TH STREET STATION	1,691	1,638	53	3.21%
23RD STREET STATION	511	488	23	4.76%
29TH STREET STATION	1,522	1,380	142	10.29%
39TH STREET STATION	301	266	35	13.01%
48TH STREET STATION	244	223	21	9.36%
59TH STREET STATION	280	248	32	12.71%
7TH & CAPITOL STATION	1,000	907	93	10.24%
7TH & I/COUNTY CENTER STATION	398	345	53	15.45%
8TH & CAPITOL STATION	57	54	3	5.21%
8TH & H STATION	80	75	6	7.35%
8TH & K STATION	85	78	8	9.91%
8TH & O STATION	802	728	74	10.16%
ARCHIVES PLAZA STATION	662	590	72	12.28%
BUTTERFIELD STATION	549	516	34	6.57%
COLLEGE GREENS STATION	663	615	48	7.74%
CORDOVA TOWN CENTER STATION	454	451	3	0.68%
GLENN STATION	260	247	13	5.28%
HAZEL STATION	179	161	18	11.00%

HISTORIC FOLSOM STATION	489	471	18	3.72%
IRON POINT STATION	492	435	57	13.14%
MATHER FIELD/MILLS STATION	1,309	1,280	30	2.33%
POWER INN STATION	565	502	63	12.63%
SACRAMENTO VALLEY STATION	515	489	27	5.43%
STARFIRE STATION	308	288	21	7.14%
SUNRISE STATION	818	786	33	4.15%
TIBER STATION	289	276	13	4.81%
UNIVERSITY/65TH STREET STATION	1,288	1,328	(41)	-3.06%
WATT/MANLOVE STATION	1,003	959	43	4.53%
ZINFANDEL STATION	787	733	54	7.41%
GREEN LINE - Total	559	460	99	21.52%
13TH STREET STATION	142	106	36	33.56%
7TH & CAPITOL STATION	34	29	4	14.36%
7TH & I/COUNTY CENTER STATION	35	28	7	23.86%
8TH & CAPITOL STATION	25	21	5	21.66%
8TH & K STATION	46	56	(10)	-17.55%
8TH & O STATION	37	26	11	42.51%
ARCHIVES PLAZA STATION	43	29	14	49.98%
TOWNSHIP 9 STATION	196	164	32	19.66%
All Stations	37,530	34,360	3,170	9.23%

Average Weekday Alightings by Station by Line

Station Name	Jun19	Jun18	Difference	% Change
BLUE LINE - Rt#533	18,269	16,893	1,377	8.15%
12TH & I STATION	510	452	59	13.02%
13TH STREET STATION	576	492	84	17.04%
16TH STREET STATION	1,664	1,504	159	10.59%
47TH AVENUE STATION	549	517	32	6.17%
4TH AVE/WAYNE HULTGREN STATION	360	407	(46)	-11.40%
7TH & CAPITOL STATION	658	581	77	13.29%
8TH & CAPITOL STATION	500	445	55	12.36%
8TH & O STATION	763	638	125	19.58%
ALKALI FLAT/LA VALENTINA STATION	709	626	82	13.13%
ARCHIVES PLAZA STATION	512	431	81	18.67%
ARDEN/DEL PASO STATION	807	751	56	7.45%
BROADWAY STATION	658	617	41	6.65%
CATHEDRAL SQUARE STATION	861	745	116	15.54%
CENTER PARKWAY STATION	187	194	(7)	-3.42%
CITY COLLEGE STATION	578	764	(186)	-24.34%
CRC STATION	1,263	1,255	8	0.63%
FLORIN STATION	880	821	60	7.27%
FRANKLIN STATION	695	614	80	13.05%
FRUITRIDGE STATION	409	407	2	0.56%
GLOBE AVENUE STATION	266	247	19	7.69%
MARCONI/ARCADE STATION	703	614	89	14.46%
MEADOWVIEW STATION	847	802	46	5.71%
ROSEVILLE ROAD STATION	669	593	76	12.88%
ROYAL OAKS STATION	441	363	78	21.44%
ST ROSE OF LIMA PARK STATION	539	461	77	16.76%
SWANSTON STATION	250	232	19	8.09%
Watt/I-80 Station	1,212	1,127	85	7.51%
WATT/I-80 WEST STATION	134	126	8	6.34%
GOLD LINE - Rt#507	18,753	16,958	1,795	10.59%
13TH STREET STATION	604	516	89	17.24%
16TH STREET STATION	1,777	1,630	146	8.96%
23RD STREET STATION	514	471	43	9.05%
29TH STREET STATION	1,491	1,335	156	11.71%
39TH STREET STATION	286	257	29	11.23%
48TH STREET STATION	279	237	42	17.81%
59TH STREET STATION	295	260	35	13.40%
7TH & CAPITOL STATION	69	56	13	23.42%
7TH & I/COUNTY CENTER STATION	25	25	0	0.07%
8TH & CAPITOL STATION	748	652	97	14.82%
8TH & H STATION	385	330	55	16.61%
8TH & K STATION	698	644	54	8.38%
8TH & O STATION	706	628	78	12.43%
ARCHIVES PLAZA STATION	684	592	92	15.47%
BUTTERFIELD STATION	540	494	46	9.40%
COLLEGE GREENS STATION	637	584	53	9.06%
CORDOVA TOWN CENTER STATION	440	415	25	6.05%
GLENN STATION	258	232	26	11.17%

HAZEL STATION	189	153	35	22.98%
HISTORIC FOLSOM STATION	515	460	55	11.86%
IRON POINT STATION	483	414	69	16.78%
MATHER FIELD/MILLS STATION	1,355	1,205	150	12.48%
POWER INN STATION	583	487	96	19.69%
SACRAMENTO VALLEY STATION	430	416	15	3.58%
SACRAMENTO VALLEY STATION	200	228	(28)	-12.13%
STARFIRE STATION	269	251	18	7.17%
SUNRISE STATION	833	748	85	11.35%
TIBER STATION	278	261	16	6.31%
UNIVERSITY/65TH STREET STATION	1,336	1,307	28	2.16%
WATT/MANLOVE STATION	1,028	936	92	9.80%
ZINFANDEL STATION	816	732	84	11.47%
GREEN LINE - Rt#519	507	509	(2)	-0.46%
13TH STREET STATION	166	164	2	1.17%
7TH & CAPITOL STATION	35	41	(6)	-14.88%
7TH & I/COUNTY CENTER STATIO	60	57	3	5.70%
8TH & CAPITOL STATION	14	10	4	37.13%
8TH & K STATION	27	30	(3)	-10.56%
8TH & O STATION	24	25	(1)	-2.47%
ARCHIVES PLAZA STATION	29	26	3	12.20%
TOWNSHIP 9 STATION	151	156	(5)	-2.97%
All Stations	37,530	34,360	3,170	9.23%

Average Saturday Boardings by Station by Line

Station Name	Jun19	Jun18	Difference	% Change
BLUE LINE - Rt#533	8,182	6,000	2,182	36.37%
12TH & I STATION	145	122	23	19.32%
13TH STREET STATION	192	153	40	26.05%
16TH STREET STATION	702	548	154	28.10%
47TH AVENUE STATION	204	149	55	36.66%
4TH AVE/WAYNE HULTGREN STATION	154	109	45	41.72%
7TH & CAPITOL STATION	350	259	91	34.96%
8TH & CAPITOL STATION	107	66	41	62.44%
8TH & O STATION	114	84	29	34.62%
ALKALI FLAT/LA VALENTINA STATION	410	295	114	38.72%
ARCHIVES PLAZA STATION	69	60	9	14.18%
ARDEN/DEL PASO STATION	531	358	173	48.29%
BROADWAY STATION	379	280	99	35.52%
CATHEDRAL SQUARE STATION	376	263	114	43.35%
CENTER PARKWAY STATION	150	104	46	44.31%
CITY COLLEGE STATION	178	170	9	5.13%
CRC STATION	555	406	149	36.72%
FLORIN STATION	450	329	121	36.76%
FRANKLIN STATION	197	150	46	30.90%
FRUITRIDGE STATION	216	169	47	27.96%
GLOBE AVENUE STATION	131	94	37	38.95%
MARCONI/ARCADE STATION	364	280	84	30.12%
MEADOWVIEW STATION	440	310	129	41.57%
ROSEVILLE ROAD STATION	142	82	60	72.20%
ROYAL OAKS STATION	275	209	66	31.66%
ST ROSE OF LIMA PARK STATION	408	280	129	45.96%
SWANSTON STATION	121	91	31	33.75%
Watt/I-80 Station	744	524	220	41.92%
WATT/I-80 WEST STATION	30	18	13	71.99%
GOLD LINE - Rt#507	7,723	5,900	1,823	30.90%
13TH STREET STATION	217	173	45	25.85%
16TH STREET STATION	608	565	43	7.59%
23RD STREET STATION	213	142	71	50.45%
29TH STREET STATION	521	430	91	21.23%
39TH STREET STATION	122	93	29	31.10%
48TH STREET STATION	103	79	24	30.23%
59TH STREET STATION	139	87	52	59.52%
7TH & CAPITOL STATION	270	282	(11)	-4.02%
7TH & I/COUNTY CENTER STATION	95	89	6	6.77%
8TH & CAPITOL STATION	47	24	23	97.67%
8TH & H STATION	31	24	8	32.47%
8TH & K STATION	98	47	51	108.34%
8TH & O STATION	98	95	3	3.05%
ARCHIVES PLAZA STATION	108	76	32	42.21%
BUTTERFIELD STATION	148	119	30	25.00%
COLLEGE GREENS STATION	504	345	159	46.29%
CORDOVA TOWN CENTER STATION	217	172	45	25.97%
GLENN STATION	79	48	31	65.16%

HAZEL STATION	90	57	33	56.70%
HISTORIC FOLSOM STATION	329	206	123	59.92%
IRON POINT STATION	228	162	66	41.02%
MATHER FIELD/MILLS STATION	725	517	208	40.13%
POWER INN STATION	190	158	32	20.14%
SACRAMENTO VALLEY STATION	252	242	10	4.04%
ST ROSE OF LIMA PARK STATION	3	4	(1)	-21.76%
STARFIRE STATION	173	138	35	25.21%
SUNRISE STATION	431	278	152	54.79%
TIBER STATION	159	110	49	44.02%
UNIVERSITY/65TH STREET STATION	538	421	118	28.00%
WATT/MANLOVE STATION	417	299	118	39.57%
ZINFANDEL STATION	568	419	149	35.51%
Final Total - Boardings	15,905	11,900	4,005	33.66%

Average Saturday Alightings by Station by Line

Station Name	Jun19	Jun18	Difference	% Change
BLUE LINE - Rt#533	8,708	5,972	2,736	45.81%
12TH & I STATION	168	116	52	44.71%
13TH STREET STATION	216	156	60	38.73%
16TH STREET STATION	906	588	318	54.06%
47TH AVENUE STATION	210	150	60	39.80%
4TH AVE/WAYNE HULTGREN STATION	161	105	56	52.97%
7TH & CAPITOL STATION	282	191	92	48.16%
8TH & CAPITOL STATION	158	98	60	61.99%
8TH & O STATION	118	80	38	47.47%
ALKALI FLAT/LA VALENTINA STATION	435	293	142	48.34%
ARCHIVES PLAZA STATION	62	48	14	29.53%
ARDEN/DEL PASO STATION	577	364	214	58.82%
BROADWAY STATION	474	300	174	57.95%
CATHEDRAL SQUARE STATION	446	288	158	54.69%
CENTER PARKWAY STATION	142	92	50	54.23%
CITY COLLEGE STATION	167	152	15	9.95%
CRC STATION	616	425	191	45.00%
FLORIN STATION	488	341	147	42.95%
FRANKLIN STATION	174	125	49	39.56%
FRUITRIDGE STATION	194	156	38	24.05%
GLOBE AVENUE STATION	134	98	35	35.91%
MARCONI/ARCADE STATION	358	272	86	31.45%
MEADOWVIEW STATION	415	306	109	35.41%
ROSEVILLE ROAD STATION	152	91	61	67.74%
ROYAL OAKS STATION	346	231	115	50.02%
ST ROSE OF LIMA PARK STATION	310	217	93	42.64%
SWANSTON STATION	126	80	46	57.24%
Watt/I-80 Station	806	560	246	43.96%
WATT/I-80 WEST STATION	25	14	11	80.12%
GOLD LINE - Rt#507	7,197	5,928	1,269	21.41%
13TH STREET STATION	267	156	111	71.33%
16TH STREET STATION	695	606	88	14.60%

23RD STREET STATION	174	144	30	20.93%
29TH STREET STATION	439	390	50	12.70%
39TH STREET STATION	106	79	26	33.11%
48TH STREET STATION	86	83	3	3.82%
59TH STREET STATION	91	74	17	22.91%
7TH & CAPITOL STATION	21	23	(2)	-8.76%
7TH & I/COUNTY CENTER STATION	12	15	(4)	-24.75%
8TH & CAPITOL STATION	237	140	97	68.92%
8TH & H STATION	55	66	(11)	-16.48%
8TH & K STATION	567	313	253	80.94%
8TH & O STATION	91	78	13	16.59%
ARCHIVES PLAZA STATION	70	78	(8)	-10.63%
BUTTERFIELD STATION	114	117	(3)	-2.77%
COLLEGE GREENS STATION	408	335	73	21.90%
CORDOVA TOWN CENTER STATION	218	176	42	23.74%
GLENN STATION	58	40	18	46.27%
HAZEL STATION	74	54	19	36.07%
HISTORIC FOLSOM STATION	287	223	64	28.68%
IRON POINT STATION	202	166	36	21.65%
MATHER FIELD/MILLS STATION	575	532	42	7.97%
POWER INN STATION	166	137	29	21.02%
SACRAMENTO VALLEY STATIO	248	244	5	1.87%
SACRAMENTO VALLEY STATION	13	3	10	300.48%
ST ROSE OF LIMA PARK STATION	-	0	(0)	-100.00%
STARFIRE STATION	159	136	23	16.56%
SUNRISE STATION	376	289	86	29.83%
TIBER STATION	104	101	3	2.98%
UNIVERSITY/65TH STREET STATION	463	418	45	10.83%
WATT/MANLOVE STATION	324	280	44	15.54%
ZINFANDEL STATION	499	429	70	16.31%
Final Total - Alightings	15,905	11,900	4,005	33.66%

Average Sunday Boardings by Station by Line

Station Name	Jun19	Jun18	Difference	% Change
BLUE LINE - Rt#533	6,380	4,700	1,680	35.74%
12TH & I STATION	127	102	26	25.09%
13TH STREET STATION	190	119	71	59.56%
16TH STREET STATION	591	430	162	37.68%
47TH AVENUE STATION	141	126	16	12.37%
4TH AVE/WAYNE HULTGREN STATION	117	81	36	44.60%
7TH & CAPITOL STATION	266	201	65	32.50%
8TH & CAPITOL STATION	86	52	34	66.23%
8TH & O STATION	74	71	3	4.03%
ALKALI FLAT/LA VALENTINA STATION	340	237	103	43.54%
ARCHIVES PLAZA STATION	69	42	27	65.68%
ARDEN/DEL PASO STATION	365	277	88	31.77%
BROADWAY STATION	284	220	64	29.24%
CATHEDRAL SQUARE STATION	335	221	115	51.86%
CENTER PARKWAY STATION	104	80	23	29.22%
CITY COLLEGE STATION	151	111	40	35.87%
CRC STATION	371	299	73	24.26%
FLORIN STATION	386	276	110	39.77%
FRANKLIN STATION	179	136	44	32.21%
FRUITRIDGE STATION	155	134	21	15.79%
GLOBE AVENUE STATION	111	84	26	31.39%
MARCONI/ARCADE STATION	263	177	86	48.30%
MEADOWVIEW STATION	317	241	76	31.67%
ROSEVILLE ROAD STATION	123	75	48	64.36%
ROYAL OAKS STATION	275	180	95	53.05%
ST ROSE OF LIMA PARK STATION	293	222	70	31.66%
SWANSTON STATION	90	64	26	40.89%
Watt/I-80 Station	521	398	123	31.02%
WATT/I-80 WEST STATION	15	14	1	10.41%
GOLD LINE - Rt#507	6,204	5,100	1,104	21.65%
13TH STREET STATION	187	161	25	15.77%
16TH STREET STATION	565	477	88	18.46%
23RD STREET STATION	149	115	34	29.11%
29TH STREET STATION	420	357	63	17.73%
39TH STREET STATION	122	80	42	52.87%
48TH STREET STATION	89	63	26	41.43%
59TH STREET STATION	78	68	11	15.55%
7TH & CAPITOL STATION	301	242	60	24.74%
7TH & I/COUNTY CENTER STATION	90	82	8	9.61%
8TH & CAPITOL STATION	34	21	13	64.26%
8TH & H STATION	19	24	(5)	-21.37%
8TH & K STATION	66	38	28	73.73%
8TH & O STATION	105	86	19	22.29%
ARCHIVES PLAZA STATION	79	61	18	29.49%
BUTTERFIELD STATION	138	106	32	29.63%
COLLEGE GREENS STATION	365	299	66	21.97%
CORDOVA TOWN CENTER STATION	160	155	5	3.46%
GLENN STATION	36	35	1	2.47%

HAZEL STATION	60	49	11	22.05%
HISTORIC FOLSOM STATION	146	169	(23)	-13.63%
IRON POINT STATION	121	133	(12)	-9.04%
MATHER FIELD/MILLS STATION	592	453	139	30.56%
POWER INN STATION	186	126	60	47.41%
SACRAMENTO VALLEY STATION	272	229	43	18.93%
STARFIRE STATION	162	126	36	28.72%
SUNRISE STATION	302	253	49	19.20%
TIBER STATION	104	92	12	13.39%
UNIVERSITY/65TH STREET STATION	462	379	83	21.85%
WATT/MANLOVE STATION	325	249	75	30.27%
ZINFANDEL STATION	467	370	97	26.20%
Final Total - Boardings	12,584	9,800	2,784	28.41%

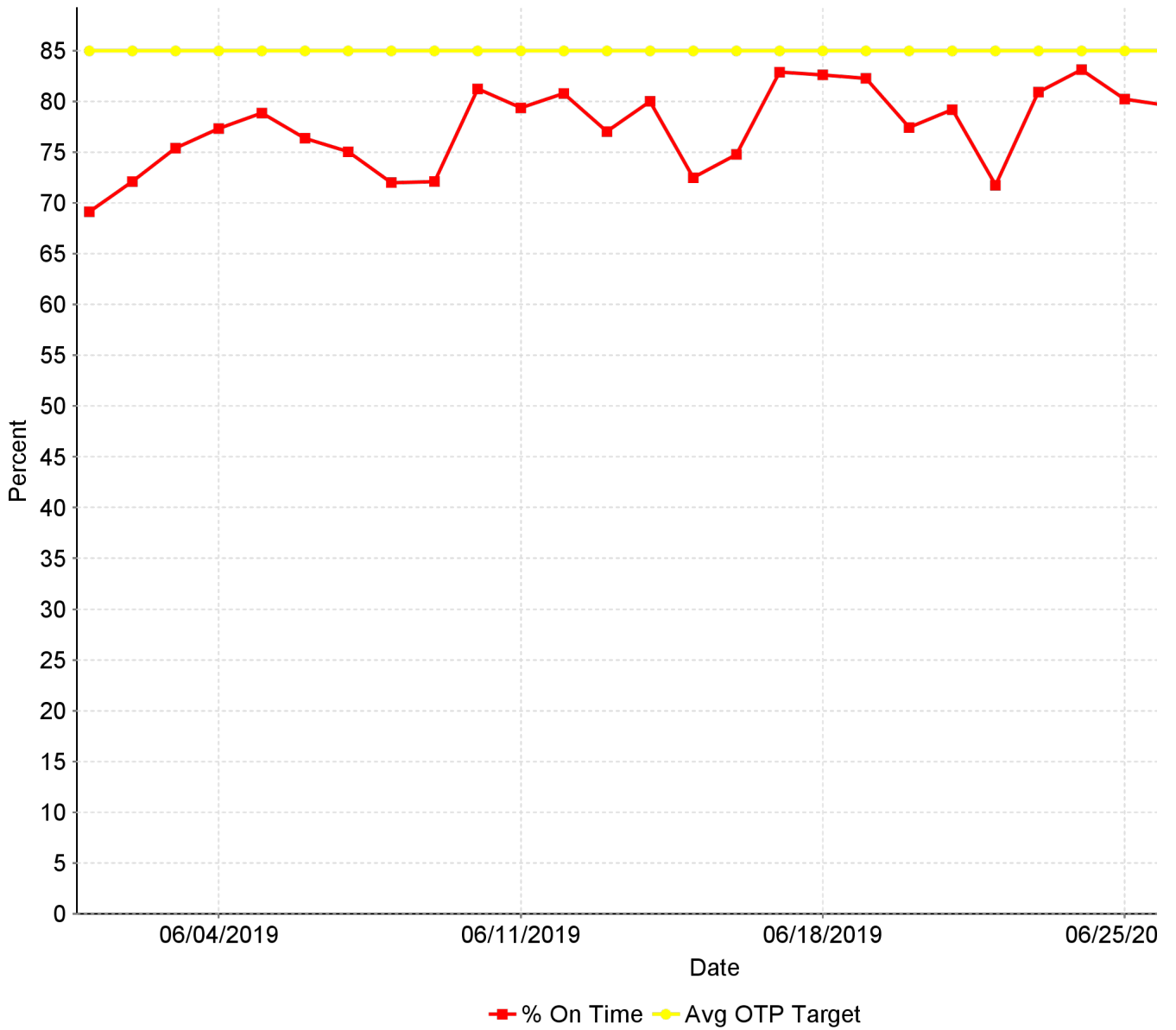
Average Sunday Alightings by Station by Line

Station Name	Jun19	Jun18	Difference	% Change
BLUE LINE - Rt#533	6,227	4,910	1,317	26.82%
12TH & I STATION	129	95	34	35.35%
13TH STREET STATION	176	133	43	32.50%
16TH STREET STATION	627	494	133	26.83%
47TH AVENUE STATION	193	131	62	47.18%
4TH AVE/WAYNE HULTGREN STATION	124	81	43	53.53%
7TH & CAPITOL STATION	174	162	12	7.24%
8TH & CAPITOL STATION	115	84	32	38.22%
8TH & O STATION	64	66	(1)	-2.12%
ALKALI FLAT/LA VALENTINA STATION	305	260	45	17.24%
ARCHIVES PLAZA STATION	50	40	10	25.11%
ARDEN/DEL PASO STATION	372	285	87	30.53%
BROADWAY STATION	309	247	62	24.90%
CATHEDRAL SQUARE STATION	300	229	70	30.62%
CENTER PARKWAY STATION	82	74	8	10.25%
CITY COLLEGE STATION	130	117	13	11.16%
CRC STATION	420	326	94	28.84%
EMPLOYEE PLATFORM STATION	27	29	(3)	-8.95%
FLORIN STATION	400	299	100	33.60%
FRANKLIN STATION	129	118	11	8.90%
FRUITRIDGE STATION	157	138	19	13.73%
GLOBE AVENUE STATION	87	78	9	11.54%
MARCONI/ARCADE STATION	243	186	57	30.53%
MEADOWVIEW STATION	332	249	83	33.34%
ROSEVILLE ROAD STATION	112	75	37	49.10%
ROYAL OAKS STATION	307	204	104	50.92%
ST ROSE OF LIMA PARK STATION	185	173	12	7.06%
SWANSTON STATION	102	70	32	45.22%
Watt/I-80 Station	563	456	107	23.34%
WATT/I-80 WEST STATION	14	9	4	47.94%
GOLD LINE - Rt#507	6,357	4,890	1,467	30.00%
13TH STREET STATION	219	129	90	69.72%
16TH STREET STATION	596	481	116	24.02%

23RD STREET STATION	145	118	27	22.94%
29TH STREET STATION	384	323	61	18.90%
39TH STREET STATION	108	82	26	31.91%
48TH STREET STATION	95	65	30	45.68%
59TH STREET STATION	91	63	28	44.17%
7TH & CAPITOL STATION	25	23	2	10.71%
7TH & I/COUNTY CENTER STATION	21	12	9	71.47%
8TH & CAPITOL STATION	213	116	97	83.47%
8TH & H STATION	65	51	13	26.09%
8TH & K STATION	399	263	136	51.62%
8TH & O STATION	117	71	46	64.91%
ARCHIVES PLAZA STATION	122	65	57	86.88%
BUTTERFIELD STATION	133	99	34	34.70%
COLLEGE GREENS STATION	360	282	78	27.59%
CORDOVA TOWN CENTER STATION	164	138	27	19.44%
GLENN STATION	42	27	15	53.84%
HAZEL STATION	58	46	12	26.70%
HISTORIC FOLSOM STATION	163	165	(3)	-1.63%
IRON POINT STATION	135	126	9	7.14%
MATHER FIELD/MILLS STATION	514	416	98	23.59%
POWER INN STATION	187	122	65	53.26%
SACRAMENTO VALLEY STATIO	252	203	49	24.05%
SACRAMENTO VALLEY STATION	-	1	(1)	-100.00%
ST ROSE OF LIMA PARK STATION	2	1	1	107.52%
STARFIRE STATION	141	108	32	29.69%
SUNRISE STATION	315	271	44	16.33%
TIBER STATION	100	76	24	30.96%
UNIVERSITY/65TH STREET STATION	436	345	91	26.37%
WATT/MANLOVE STATION	267	235	32	13.79%
ZINFANDEL STATION	487	365	123	33.63%
Final Total - Alightings	12,584	9,800	2,784	28.41%

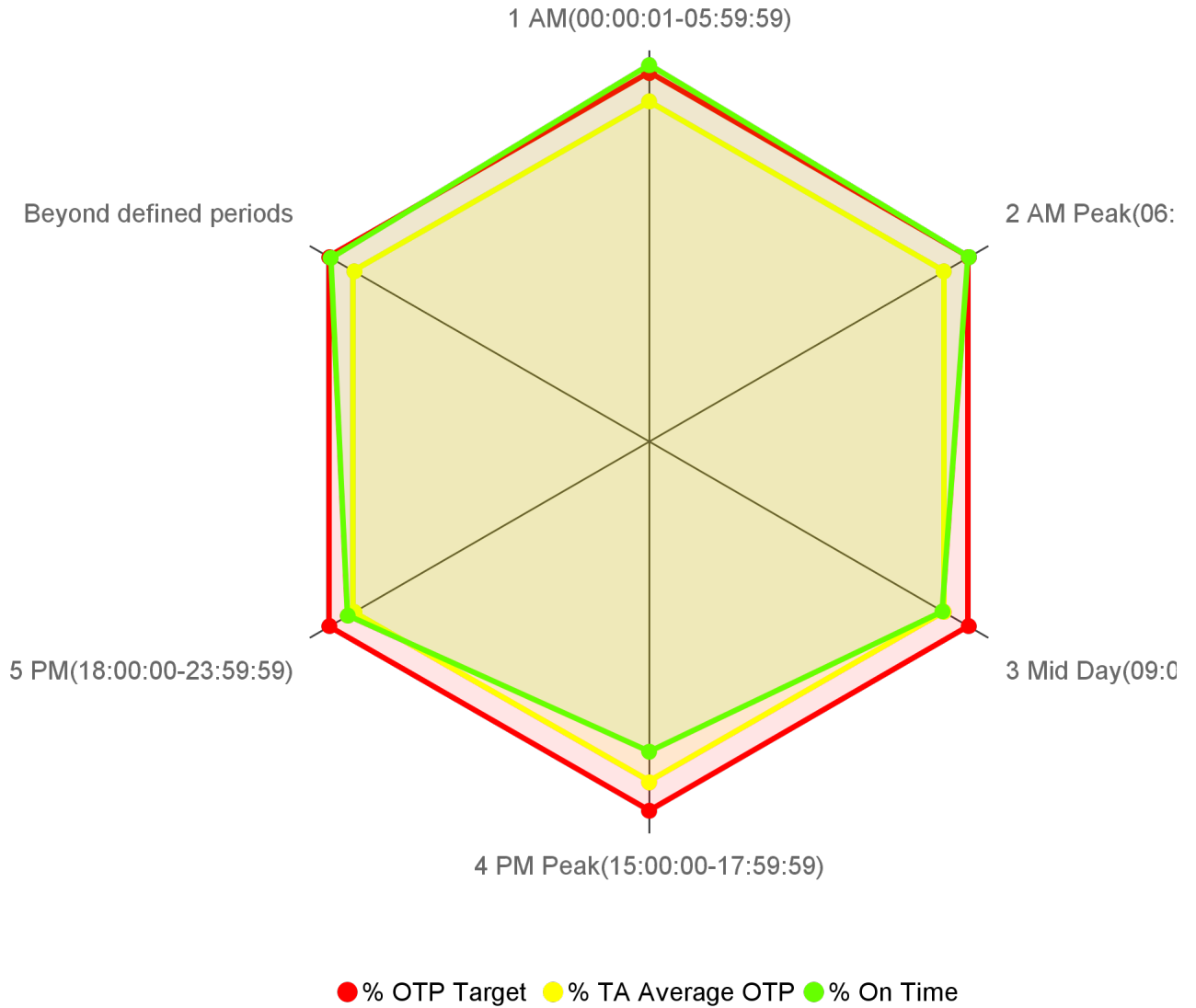
CR-0105 On Time Performance KPI Trend

On Time Performance



CR-0104 On Time Performance by Operational Period

On Time Performance by Operational Period

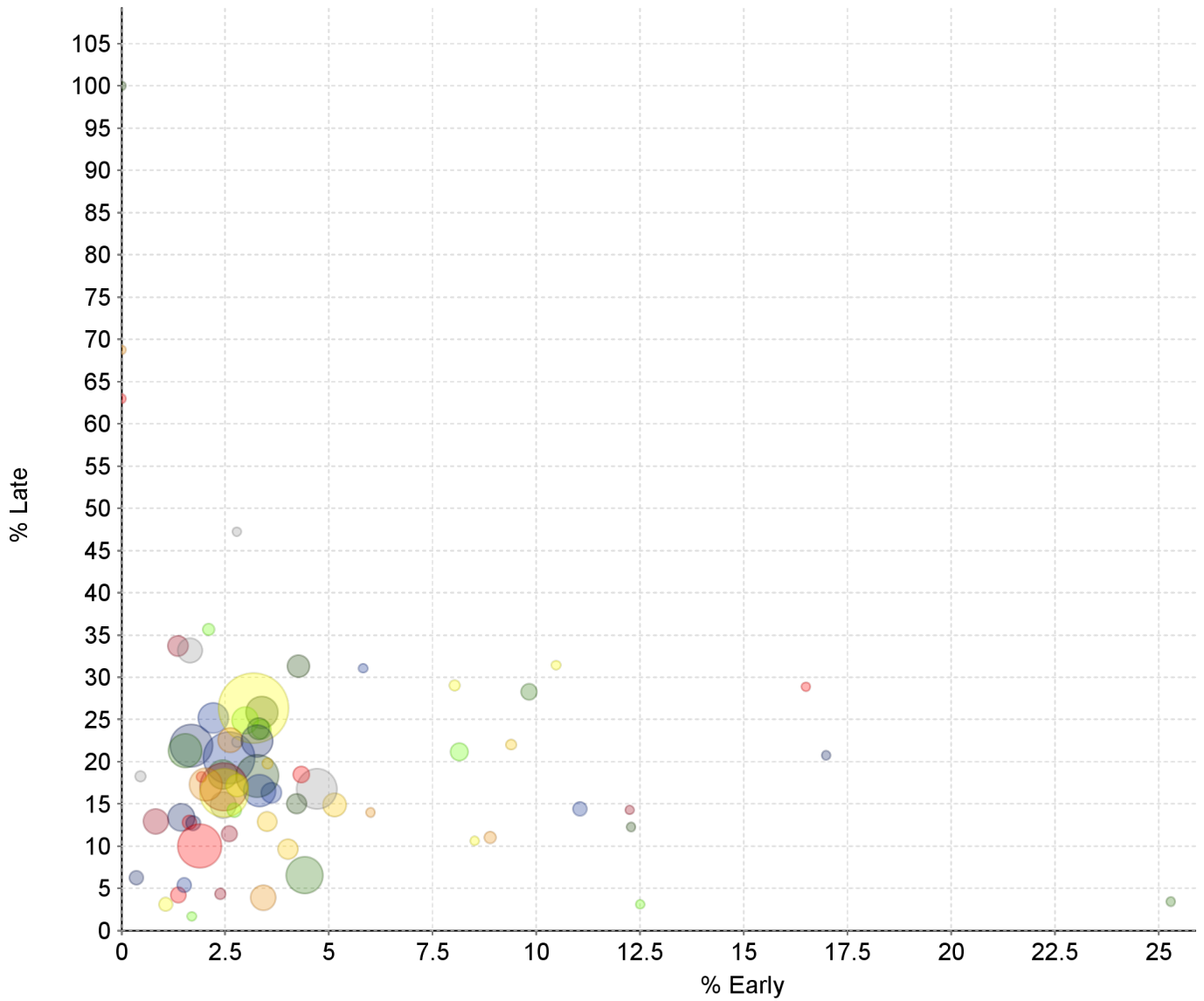


Transit Domain: Bus

Operational Period	% On Time	% TA Average OTP	% OTP Target	# On Time	# Processed
1 AM(00:00:01-05:59:59)	86.76	78.43	85.00	3,067	3,535
2 AM Peak(06:00:00-08:59:59)	85.07	78.43	85.00	47,692	56,064
3 Mid Day(09:00:00-14:59:59)	78.09	78.43	85.00	85,247	109,167
4 PM Peak(15:00:00-17:59:59)	71.35	78.43	85.00	45,388	63,612
5 PM(18:00:00-23:59:59)	80.13	78.43	85.00	38,415	47,942
Beyond defined periods	84.64	78.43	85.00	496	586

CR-0106 On Time Performance Graph

Shows all Routes together on one chart for easy visual indication of outliers.



Route	% Early	% Late	Timepoints Processed
001 - Greenback	1.88	10.03	11,738
002 - Riverside	2.78	17.18	4,528
003 - Riverside Express	2.10	35.64	954
005 - Meadowview - Valley Hi via Massi	1.51	5.40	1,851
006 - Land Park	3.31	23.91	4,296
007 - Pocket Express	3.52	19.79	682
011 - Truxel Road	1.66	33.15	5,255
013 - Northgate	2.60	11.48	2,309
015 - Rio Linda Blvd - O St	3.27	22.45	7,706
019 - Rio Linda	4.26	31.30	4,502
021 - Sunrise - Citrus Heights	2.04	17.31	8,009
022 - Arden	4.33	18.50	2,541
023 - El Camino	2.47	16.29	13,217
024 - Madison - Greenback	2.71	14.25	1,769
025 - Marconi	3.32	16.56	7,822
026 - Fulton	1.53	21.29	8,355

Route	% Early	% Late	Timepoints Processed
028 - Fair Oaks - Folsom Blvd	3.51	12.90	3,536
029 - Arden - California Ave	2.79	22.35	680
030 - J Street (DASH)	2.47	17.01	13,140
033 - Dos Rios	1.73	12.74	1,853
034 - McKinley	4.22	15.02	3,675
038 - P/Q Streets	2.62	22.56	5,305
047 - Phoenix Park	1.64	12.83	1,831
051 - Broadway - Stockton	3.18	26.34	20,546
054 - Center Parkway	3.38	23.81	3,524
055 - Scottsdale	2.21	25.19	7,200
056 - Pocket - C.R.C.	2.44	18.46	6,805
061 - Fruitridge	4.02	9.67	3,735
062 - Freeport	4.71	16.78	10,515
065 - Delta Shores - Franklin - 65th S	1.36	33.70	3,890
067 - Franklin	1.68	21.91	11,358
068 - 44th Street	3.27	18.32	11,319
072 - Rosemont - Lincoln Village	3.42	3.91	5,446
074 - International	1.37	4.23	2,268
075 - Mather Field	1.06	3.13	1,503
080 - Watt - Elkhorn	2.98	24.88	5,973
081 - Florin - 65th Street	2.59	20.46	14,401
082 - Howe - 65th Street	4.41	6.57	9,383
084 - Watt - North Highlands	5.14	14.87	4,868
086 - San Juan - Silver Eagle	2.45	14.87	5,744
087 - Howe	0.83	12.93	5,314
088 - West El Camino	1.44	13.41	6,168
093 - Hillsdale	3.38	25.84	7,779
095 - Citrus Heights-Antelope Rd	8.88	11.05	923
103 - Auburn Blvd	1.93	18.20	467
109 - Hazel Express	8.03	29.02	610
170 - JIBE EASTSIDE	8.14	21.17	2,985
171 - JIBE WESTSIDE	11.05	14.44	1,711
172 - JIBE CENTRAL	9.82	28.27	2,423
174 - JIBE MIDWEST	9.39	22.03	522
175 - RANCHO CORDOVAN - SUNRIDGE PARK	0.46	18.26	657
176 - RANCHO CORDOVAN - ANATOLIA	2.38	4.37	756
177 - RANCHO CORDOVAN - VILLAGES	0.35	6.26	1,693
195 - Citrus Heights Dial A Ride	0.00	100.00	9
205 - Fruitridge Road - Freeport	6.00	14.00	100
206 - 12th Ave - Sutterville Road	16.49	28.87	97
210 - La Riveria Drive	8.51	10.64	47

Route	% Early	% Late	Timepoints Processed
211 - College Greens	12.50	3.13	64
212 - 14th Ave - 21st Ave	5.83	31.07	103
213 - Fruitridge Road - Stockton Blvd	25.29	3.45	87
214 - Broadway - Stockton Blvd	27.66	12.77	94
226 - Pocket Riverside Blvd	2.78	47.22	36
227 - South Land Park - Greenhaven Dri	12.24	14.29	49
228 - Gloria Drive - Rush River Drive	16.98	20.75	53
246 - Meadowview - Greenhaven	12.28	12.28	57
247 - 21st Street - Florin Road	0.00	68.75	32
248 - Meadowview - Rush River	0.00	62.96	81
252 - Freeport - Fruitridge - ML King	10.48	31.43	105
255 - La Riveria - College Greens	1.69	1.69	59
051X - W/X	3.61	16.32	3,793

CR-0103 Overall On Time

Overall On Time Timepoints

On Time	Early	Late	Timepoints Processed
78.43%	3.03%	18.55%	280,906