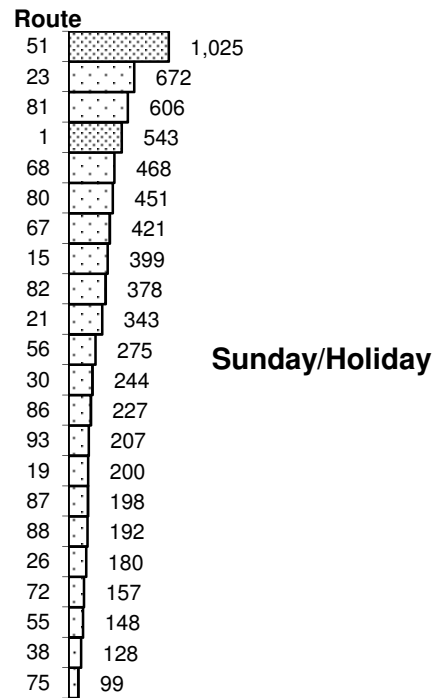
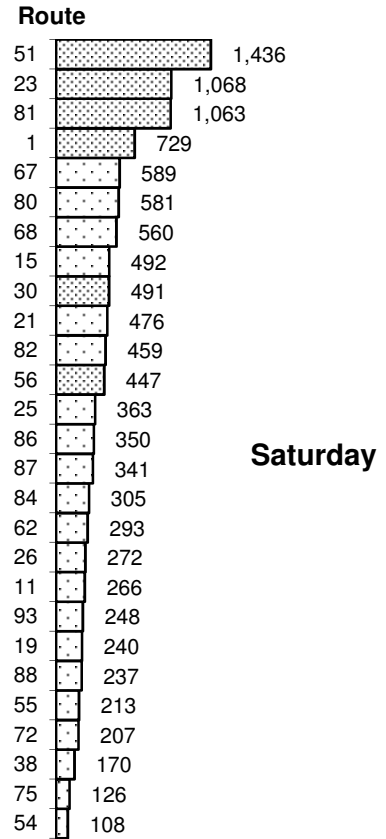
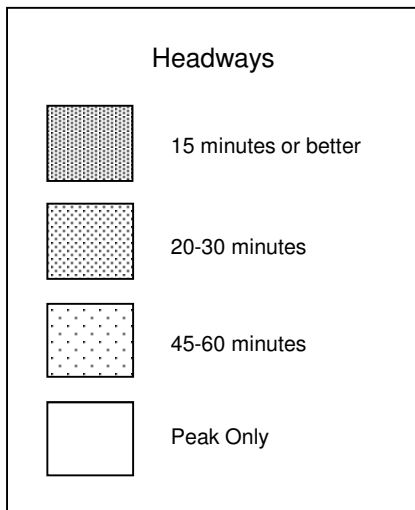
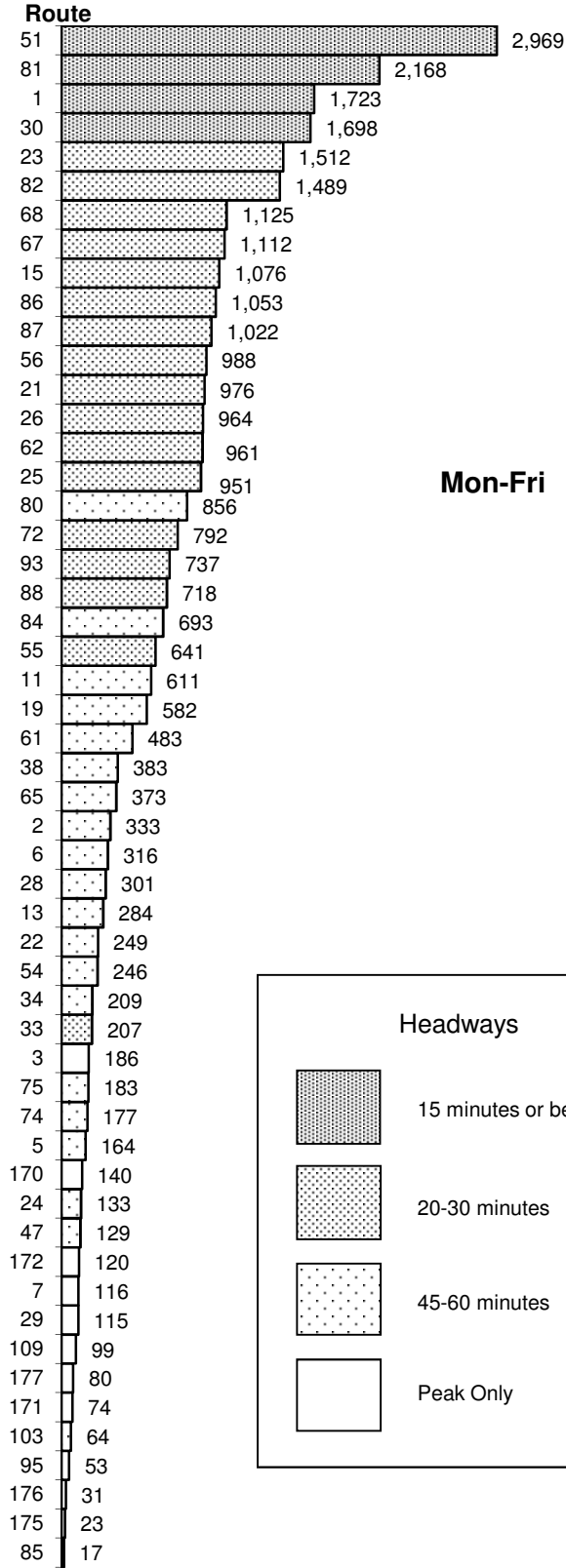

 **Regional Transit**
Quarterly Ridership Report
Period Ending September 30, 2018

Average Daily Boardings

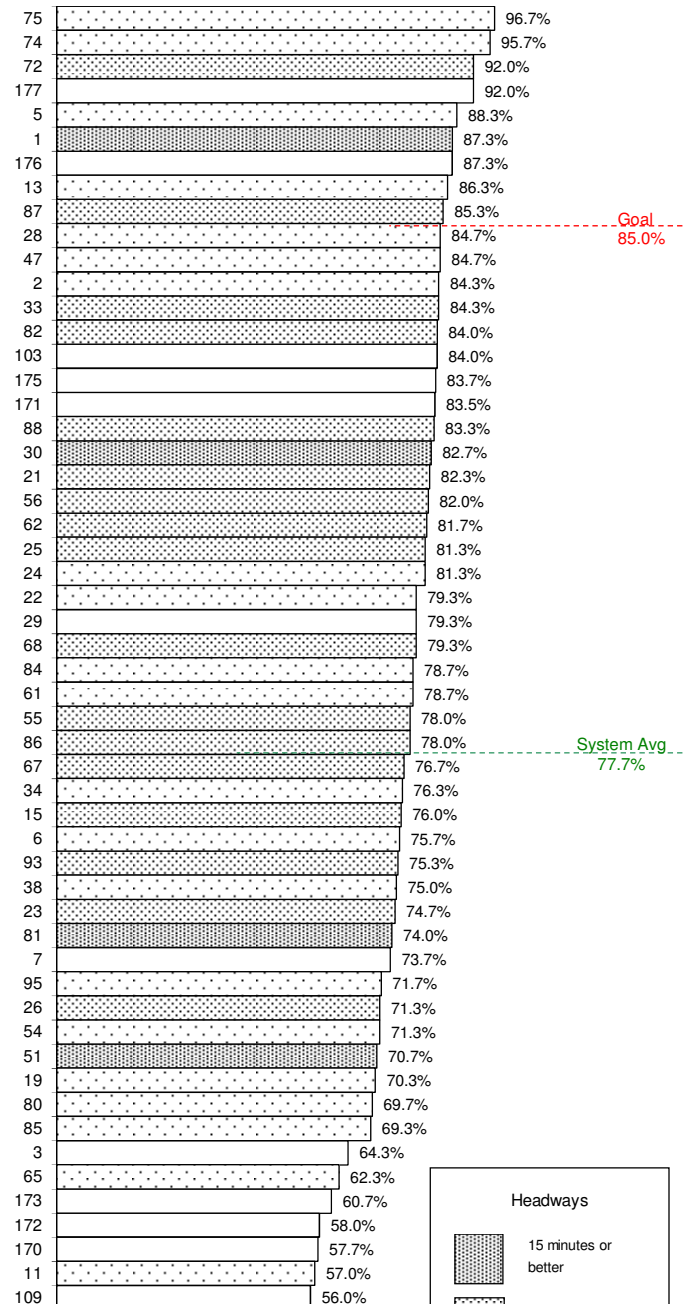


Weekday Bus and CBS Routes

On-time performance is measured at time points, which are major stops shown on the public schedule (usually 4-6 per route).

A bus is considered on-time if it leaves its time point within 0 to 4:59 minutes of its scheduled time. On-time performance indicates the percent of time points where the bus was on-time according to this definition.

SacRT's on-time performance goal for fixed-route buses is 85 percent, or better. The third quarter average for weekday on-time performance is 77.7 percent, a decrease from the second quarter results, which was 78.5 percent.

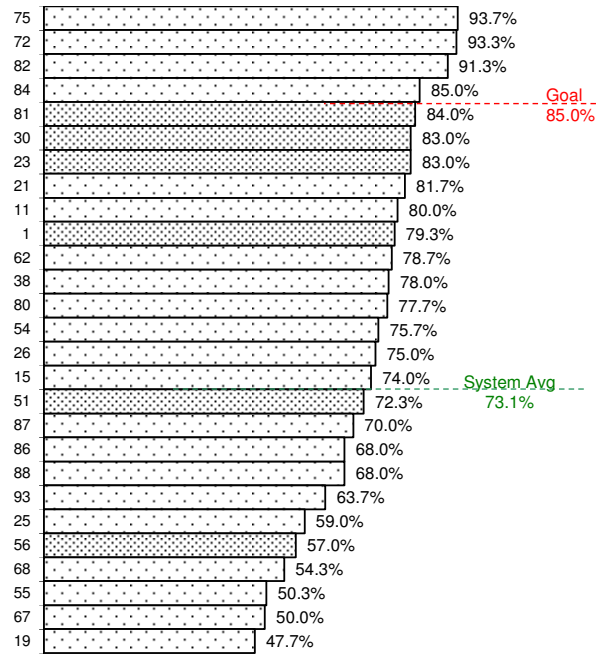
On-Time Performance


Saturday Bus Routes

On-time performance is measured at time points, which are major stops shown on the public schedule (usually 4-6 per route).

A bus is considered on-time if it leaves its time point within 0 to 4:59 minutes of its scheduled time. On-time performance indicates the percent of time points where the bus was on-time according to this definition.

SacRT's on-time performance goal for fixed-route buses is 85 percent, or better. The third quarter average for Saturday on-time performance is 73.1 percent, which is a slight increase from the second quarter average of 72.2 percent.

On-Time Performance


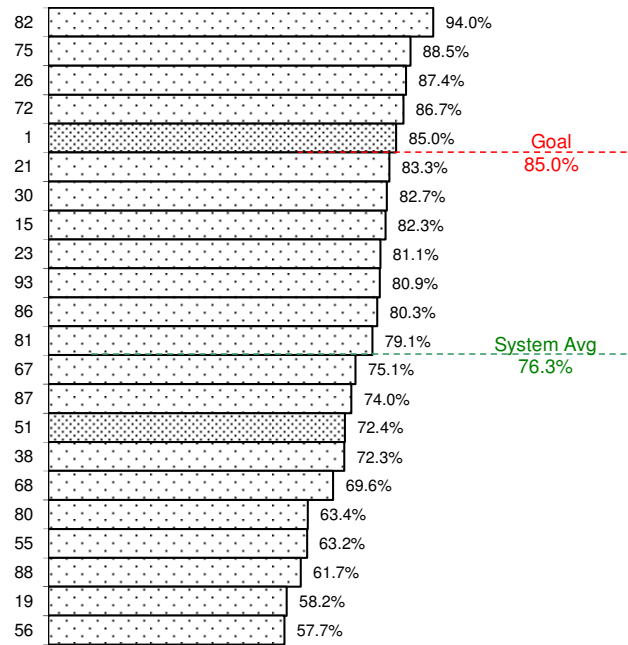
7/1/18 – 9/30/18

Sunday/Holiday Bus Routes

On-time performance is measured at time points, which are major stops along the route and shown on the public schedule (usually 4-6 per route).

A bus is considered on-time if it leaves its time point within 0 to 4:59 minutes of its scheduled time. On-time performance indicates the percent of time points where the bus was on-time according to this definition.

SacRT's on-time performance goal for fixed-route buses is 85 percent, or better. The third quarter average for Sunday on-time performance is 76.3 percent, which is a decrease from the second quarter average of 77.1 percent.

On-Time Performance


7/1/18 – 9/30/18

Light Rail On-Time Departures

Light rail on-time performance is measured at the starting point of a trip. A one-way trip is considered on-time if it departs within 0 to 4:59 minutes of its scheduled starting time.

SacRT's on-time performance goal for light rail trains is 97 percent on-time departures. The third quarter averages for the Gold line and Green line decreased from the previous quarter, and the Blue line average stayed the same.

Calendar Year/Qtr	Blue	Gold	Green
2017-Q1	96.8%	97.8%	90.7%
2017-Q2	98.0%	98.4%	93.5%
2017-Q3	97.9%	98.3%	94.4%
2017-Q4	98.3%	97.9%	90.9%
2018-Q1	98.3%	98.7%	92.5%
2018-Q2	97.7%	98.6%	95.8%
2018-Q3	97.7%	97.8%	91.8%

Quarterly Ridership Report
 Period Ending September 30, 2018

Average Daily Ridership by Time Period

7/1/18 - 9/30/18



BLUE LINE - TOTAL	AM Peak (6:00 - 9:00a)		Midday (9:01a - 3:29p)		PM Peak (3:30 - 6:00p)		Other Weekday (<6:00a or >6:00p)		Total Weekday	
	On	Off	On	Off	On	Off	On	Off	On	Off
WATT / I-80	433	209	395	456	215	292	291	229	1,334	1,185
WATT I-80 WEST	116	1	9	25	5	99	30	2	160	127
ROSEVILLE RD	391	14	52	168	20	416	63	34	526	632
MARCONI / ARCADE	270	63	247	247	133	272	130	112	779	694
SWANSTON	113	29	73	91	12	96	35	51	233	266
ROYAL OAKS	53	60	152	165	81	92	83	95	369	412
ARDEN / DEL PASO	189	110	295	370	137	196	158	163	779	839
GLOBE AVENUE	107	28	85	101	40	84	41	41	273	254
ALKALI FLAT / LA VALENT	114	141	350	275	86	93	82	105	632	614
12TH & I STREETS	39	300	138	129	250	40	51	51	478	520
CATHEDRAL SQUARE	72	385	280	259	333	65	125	85	810	793
7TH / 9TH & K	91	197	252	161	163	68	103	53	608	479
7TH / 8TH & CAPITOL	101	512	355	271	517	105	185	164	1,158	1,052
8TH & O STREETS	54	500	213	112	448	27	55	47	769	687
ARCHIVES PLAZA	23	307	159	78	368	25	43	32	593	442
13TH STREET	63	149	188	246	167	95	108	67	527	557
16TH STREET	242	585	575	628	545	244	344	282	1,705	1,738
BROADWAY	145	141	258	255	157	159	131	105	690	661
4TH/WAYNE HULTGREN	71	164	236	101	78	81	52	41	438	387
CITY COLLEGE	111	318	453	354	198	140	196	94	958	906
FRUITRIDGE	112	55	119	139	77	97	88	92	395	383
47TH AVE	274	64	132	184	73	256	80	95	558	599
FLORIN	253	137	314	372	137	272	142	224	846	1,005
MEADOWVIEW	382	67	297	316	120	333	130	240	928	956
FRANKLIN	322	29	114	168	47	436	67	128	550	761
CENTER PKWY	70	36	75	62	57	60	37	72	240	231
CRC	559	158	333	417	195	518	141	283	1,228	1,375
	4,768	4,761	6,151	6,151	4,658	4,658	2,988	2,988	18,564	18,557

Average Daily Ridership by Time Period

7/1/18 - 9/30/18



GOLD LINE - TOTAL	AM Peak (6:00 - 9:00a)		Midday (9:01a - 3:29p)		PM Peak (3:30 - 6:00p)		Other Weekday (<6:00a or >6:00p)		Total Weekday	
	On	Off	On	Off	On	Off	On	Off	On	Off
SAC VALLEY	93	79	124	148	124	100	96	54	437	381
7TH & I	43	10	115	6	221	2	42	1	420	18
8TH & H	1	161	14	102	18	20	2	32	35	315
7TH & K	0	0	0	0	0	0	0	0	0	0
8TH & K	8	155	22	288	10	116	2	83	42	640
7TH / 8TH & CAPITOL	107	378	299	185	468	80	131	81	1,005	724
8TH & O STREETS	77	363	176	146	430	52	68	75	751	635
ARCHIVES PLAZA	48	355	178	124	323	49	69	43	617	572
13TH STREET	79	147	277	200	157	96	106	31	619	475
16TH STREET	331	468	644	628	437	288	306	261	1,719	1,644
23RD STREET	169	114	134	168	80	142	85	64	467	487
29TH STREET	244	350	585	580	259	204	183	169	1,271	1,303
39TH STREET	65	75	109	86	51	45	30	44	255	250
48TH STREET	49	73	65	71	54	45	35	33	203	222
59TH STREET	54	64	73	82	41	62	24	36	192	244
65TH STREET	296	313	535	540	204	323	222	191	1,257	1,366
POWER INN ROAD	101	107	178	165	80	152	76	75	435	499
COLLEGE GREENS	137	121	340	298	114	114	101	95	691	628
WATT / MANLOVE	399	118	260	285	104	408	147	147	909	958
STARFIRE	118	17	102	78	34	68	50	69	304	232
TIBER	95	53	114	90	34	107	33	55	276	305
BUTTERFIELD	152	142	160	109	104	124	40	93	456	469
MATHER FIELD / MILLS	416	164	472	460	179	360	204	271	1,272	1,254
ZINFANDEL	160	122	284	335	152	179	172	185	768	820
CORDOVA TOWN CTR	165	60	166	159	91	160	72	70	494	449
SUNRISE	271	105	169	174	137	326	86	117	663	722
HAZEL	78	31	31	36	39	67	31	32	179	165
IRON POINT	227	70	82	135	73	177	54	60	435	441
GLENN	120	56	37	41	46	104	48	42	250	243
HIST FOLSOM	208	40	94	121	74	169	61	65	437	394
	4,311	4,311	5,839	5,839	4,136	4,136	2,573	2,573	16,858	16,858

Quarterly Ridership Report
 Period Ending September 30, 2018

Average Daily Ridership by Time Period

7/1/18 - 9/30/18

GREEN LINE - TOTAL	AM Peak (6:00 - 9:00a)		Midday (9:01a - 3:29p)		PM Peak (3:30 - 6:00p)		Other Weekday (<6:00a or >6:00p)		Total Weekday	
	On	Off	On	Off	On	Off	On	Off	On	Off
RICHARDS BLVD	49	20	83	60	25	46	10	18	168	145
7TH & I	1	13	12	26	7	9	2	2	22	50
7TH & K	0	0	0	0	0	0	0	0	0	0
7TH / 8TH & CAPITOL	7	15	20	23	20	12	8	4	55	54
8TH & O STREETS	5	5	13	12	10	4	2	1	30	21
ARCHIVES PLAZA	2	12	10	9	10	3	2	0	23	25
13TH STREET	12	13	28	57	11	23	7	13	57	105
8TH & K	6	2	24	7	9	2	7	1	46	13
8TH & H	6	7	13	8	9	3	3	1	31	19
	87	87	202	202	101	101	41	41	432	432

**Quarterly Ridership Report
Period Ending September 30, 2018**

Average Weekday Ridership

Historical Trends by Station



BLUE LINE - TOTAL	Year Ended 6/30/12		Year Ended 6/30/13		Year Ended 6/30/2014		Year Ended 6/30/2015		Year Ended 6/30/2016		Year Ended 6/30/2017		Q3 (7/1/18-9/30/18)		Percent Change FY17 to Q3	
	On	Off	On	Off	On	Off	On	Off	On	Off	On	Off	On	Off	On	Off
WATT / I-80	2,164	2,108	2,157	2,088	2,020	2,130	1,871	1,859	1,884	1,748	1,682	1,324	1,334	1,185	-21%	-10%
WATT I-80 WEST	116	116	131	127	118	165	91	97	130	131	184	100	160	127	-13%	27%
ROSEVILLE RD	633	736	633	635	576	596	527	558	564	683	629	699	526	632	-16%	-10%
MARCONI / ARCADE	916	870	1,057	959	1,062	988	825	866	1,045	914	835	690	779	694	-7%	1%
SWANSTON	269	299	313	304	341	393	346	353	308	381	210	317	233	266	11%	-16%
ROYAL OAKS	515	417	588	539	602	535	633	612	599	592	563	449	369	412	-35%	-8%
ARDEN / DEL PASO	1,361	1,606	1,297	1,457	1,316	1,394	1,203	1,319	1,194	1,270	919	985	779	839	-15%	-15%
GLOBE AVENUE	296	301	297	288	304	304	356	357	316	298	330	282	273	254	-17%	-10%
ALKALI FLAT / LA VALENTINA	949	978	1,086	1,020	1,076	1,058	951	979	1,025	1,001	869	860	632	614	-27%	-29%
12TH & I STREETS	612	662	504	591	576	577	522	598	629	668	553	594	478	520	-13%	-12%
CATHEDRAL SQUARE	846	939	743	927	809	871	715	1,035	913	988	820	969	810	793	-1%	-18%
7TH / 9TH & K	2,022	1,887	1,921	1,890	1,943	1,825	1,381	1,042	1,466	1,128	716	558	608	479	-15%	-14%
7TH / 8TH & CAPITOL	673	629	611	637	588	593	809	705	766	830	1,292	1,356	1,158	1,052	-10%	-22%
8TH & O STREETS	763	679	675	693	693	707	737	651	843	769	774	737	769	687	-1%	-7%
ARCHIVES PLAZA	519	487	489	491	520	477	522	483	550	498	604	606	593	442	-2%	-27%
13TH STREET	429	416	508	472	494	478	664	518	641	619	558	641	527	557	-6%	-13%
16TH STREET	2,213	2,396	2,008	2,225	1,984	2,148	1,731	1,774	2,104	2,177	1,865	1,835	1,705	1,738	-9%	-5%
BROADWAY	1,030	930	1,034	1,012	1,014	929	800	927	1,042	997	810	894	690	661	-15%	-26%
4TH/WAYNE HULTGREN	760	577	684	594	723	532	562	422	704	611	534	514	438	387	-18%	-25%
CITY COLLEGE	1,757	1,682	1,689	1,789	1,772	1,626	1,257	945	1,506	1,434	984	1,118	958	906	-3%	-19%
FRUITRIDGE	675	682	642	618	612	577	462	613	636	568	569	574	395	383	-31%	-33%
47TH AVE	717	728	763	682	720	733	623	729	615	773	655	709	558	599	-15%	-16%
FLORIN	1,508	1,723	1,606	1,631	1,590	1,783	1,340	1,602	1,322	1,493	1,112	1,263	846	1,005	-24%	-20%
MEADOWVIEW	2,813	2,706	2,774	2,542	2,460	2,493	2,057	1,940	1,267	1,367	1,113	1,149	928	956	-17%	-17%
FRANKLIN	-	-	-	-	-	-	-	-	550	627	642	612	550	761	-14%	24%
CENTER PKWY	-	-	-	-	-	-	-	-	337	327	346	308	240	231	-31%	-25%
CRC	-	-	-	-	-	-	-	-	1,234	1,292	1,365	1,389	1,228	1,375	-10%	-1%
TOTAL	24,555	24,555	24,209	24,210	23,912	23,912	20,984	20,984	24,185	24,185	21,533	21,533	18,564	18,557	-14%	-14%

Average Weekday Ridership

Historical Trends by Station



GOLD LINE - TOTAL	Year Ended 6/30/12		Year Ended 6/30/13		Year Ended 6/30/2014		Year Ended 6/30/2015		Year Ended 6/30/2016		Year Ended 6/30/2017		Q3 (7/1/18-9/30/18)		Percent Change FY17 to Q3	
	On	Off	On	Off	On	Off	On	Off	On	Off	On	Off	On	Off	On	Off
SAC VALLEY	504	482	387	363	439	299	483	301	400	350	378	407	437	381	16%	-6%
7TH & I	375	22	359	9	399	14	549	28	401	19	400	8	420	18	5%	140%
8TH & H	55	304	23	279	21	317	36	398	32	366	50	341	35	315	-30%	-8%
7TH & K	1,047	47	1,002	46	1,016	58	757	40	690	40	-	-	0	0	-	-
8TH & K	71	1,567	39	1,351	48	1,173	35	876	43	816	43	832	42	640	-1%	-23%
7TH / 8TH & CAPITOL	610	572	483	511	498	511	568	686	462	661	946	634	1,005	724	6%	14%
8TH & O STREETS	871	832	732	714	746	687	934	643	802	653	735	593	751	635	2%	7%
ARCHIVES PLAZA	691	699	628	660	620	663	681	616	694	641	682	609	617	572	-9%	-6%
13TH STREET	524	484	627	538	515	487	569	542	650	503	599	446	619	475	3%	6%
16TH STREET	2,437	2,367	2,146	2,317	1,982	2,148	1,997	1,918	2,061	2,048	1,720	1,869	1,719	1,644	0%	-12%
23RD STREET	661	580	573	571	549	500	585	627	544	555	468	432	467	487	0%	13%
29TH STREET	1,817	1,684	1,767	1,571	1,659	1,599	1,544	1,690	1,593	1,578	1,528	1,356	1,271	1,303	-17%	-4%
39TH STREET	353	307	396	321	350	295	276	281	301	298	255	233	255	250	0%	7%
48TH STREET	204	227	206	231	216	211	250	215	208	238	179	235	203	222	13%	-6%
59TH STREET	303	245	308	287	254	259	279	305	245	262	229	308	192	244	-16%	-21%
65TH STREET	1,670	1,762	1,678	1,708	1,634	1,728	1,612	1,814	1,645	1,658	1,365	1,332	1,257	1,366	-8%	3%
POWER INN ROAD	846	806	796	770	758	723	727	677	585	576	507	482	435	499	-14%	3%
COLLEGE GREENS	823	779	795	736	808	773	892	854	825	796	628	652	691	628	10%	-4%
WATT / MANLOVE	1,214	1,330	1,256	1,333	1,179	1,265	1,097	1,314	1,120	1,203	1,018	917	909	958	-11%	5%
STARFIRE	511	388	480	416	443	375	545	290	353	382	267	308	304	232	14%	-25%
TIBER	372	383	358	390	371	390	392	357	347	367	288	248	276	305	-4%	23%
BUTTERFIELD	737	705	690	719	714	677	706	683	652	700	576	532	456	469	-21%	-12%
MATHER FIELD / MILLS	1,762	1,914	1,814	1,844	1,758	1,754	1,591	2,013	1,661	1,610	1,334	1,448	1,272	1,254	-5%	-13%
ZINFANDEL	942	921	1,040	1,010	1,064	1,119	1,155	1,211	1,021	1,053	767	765	768	820	0%	7%
CORDOVA TOWN CTR	684	698	661	602	638	618	702	588	614	553	545	466	494	449	-9%	-4%
SUNRISE	840	909	883	862	823	803	687	748	762	684	660	647	663	722	1%	12%
HAZEL	215	239	209	192	186	179	169	204	172	206	158	177	179	165	13%	-7%
IRON POINT	481	537	473	497	480	488	541	450	422	481	422	439	435	441	3%	0%
GLENN	289	294	284	247	241	261	183	219	248	228	204	223	250	243	23%	9%
HIST FOLSOM	533	510	508	511	486	513	465	420	421	449	410	423	437	394	7%	-7%
TOTAL	22,443	22,591	21,602	21,608	20,895	20,888	21,008	21,008	19,974	19,974	17,360	17,360	18,103	18,103	4%	4%

Quarterly Ridership Report
 Period Ending September 30, 2018

Average Weekday Ridership

Historical Trends by Station

GREEN LINE - TOTAL	Year Ended 6/30/13		Year Ended 6/30/14		Year Ended 6/30/2015		Year Ended 6/30/2016		Year Ended 6/30/2017		Q3 (7/1/18-9/30/18)		Percent Change FY17 to Q3	
	On	Off	On	Off	On	Off	On	Off	On	Off	On	Off	On	Off
RICHARDS BLVD	79	82	103	105	150	143	158	150	139	126	168	145	20%	15%
7TH & I	13	16	13	25	24	38	20	40	15	51	22	50	45%	-1%
7TH & K	25	34	26	41	22	48	21	51	-	-	0	0	-	-
7TH / 8TH & CAPITOL	16	13	22	14	35	25	34	18	41	44	55	54	34%	24%
8TH & O STREETS	21	17	28	23	28	27	29	25	23	18	30	21	29%	19%
ARCHIVES PLAZA	33	17	32	21	37	28	30	27	27	19	23	25	-14%	31%
13TH STREET	51	68	58	74	76	104	59	96	44	82	57	105	30%	29%
8TH & K	38	35	48	38	55	36	61	20	45	14	46	13	2%	-5%
8TH & H	19	15	22	12	38	16	33	18	39	20	31	19	-19%	-8%
	297	297	352	352	464	464	444	444	373	373	404	403	8%	8%